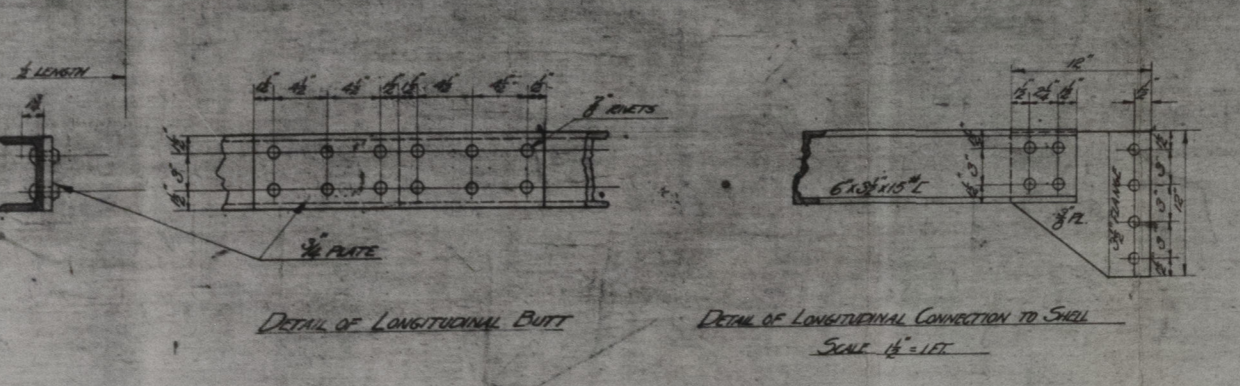
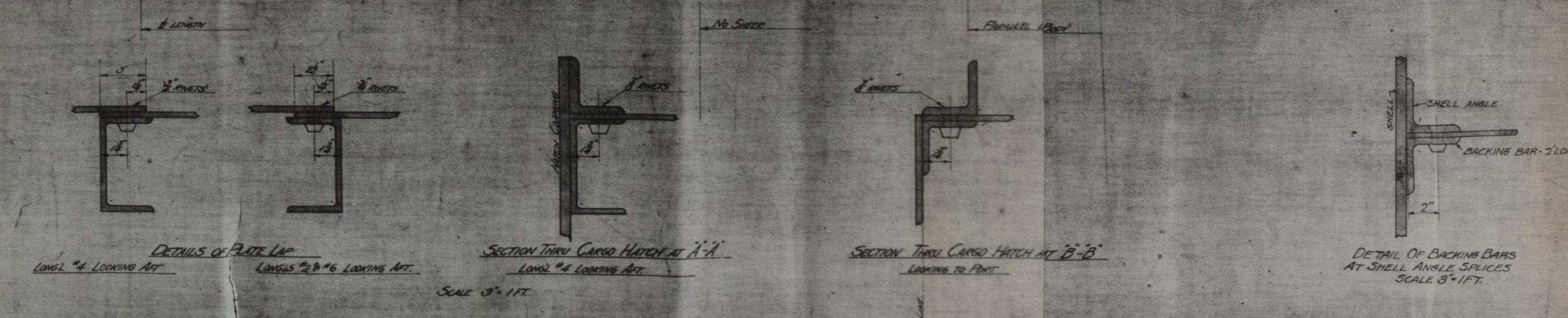
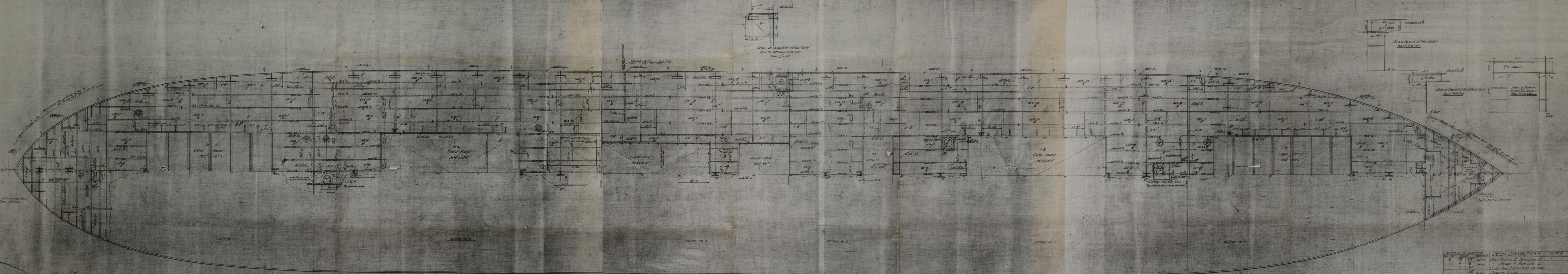


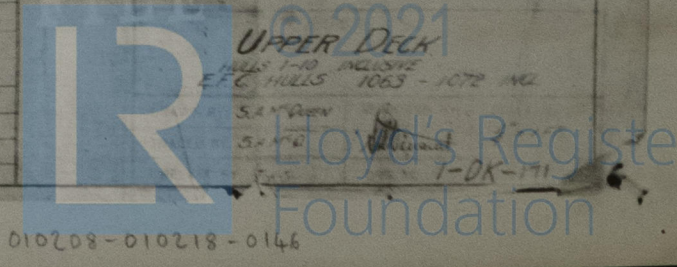
REVISIONS	
1	Revise and Amend Plans
2	Revise and Amend Plans
3	Revise and Amend Plans
4	Revise and Amend Plans
5	Revise and Amend Plans
6	Revise and Amend Plans
7	Revise and Amend Plans
8	Revise and Amend Plans
9	Revise and Amend Plans
10	Revise and Amend Plans
11	Revise and Amend Plans
12	Revise and Amend Plans
13	Revise and Amend Plans
14	Revise and Amend Plans
15	Revise and Amend Plans

3 MAR 1941



SPECIFICATIONS		DECK CONNECTIONS		SIZES	
1	1/2"	Deck Plating & Steel Laid	1/2"	1/2"	1/2"
2	1/4"	Deck Plating & Steel Laid	1/4"	1/4"	1/4"
3	1/8"	Deck Plating & Steel Laid	1/8"	1/8"	1/8"
4	3/16"	Deck Plating & Steel Laid	3/16"	3/16"	3/16"
5	1/4"	Deck Plating & Steel Laid	1/4"	1/4"	1/4"
6	1/2"	Deck Plating & Steel Laid	1/2"	1/2"	1/2"
7	3/4"	Deck Plating & Steel Laid	3/4"	3/4"	3/4"
8	1"	Deck Plating & Steel Laid	1"	1"	1"
9	1 1/4"	Deck Plating & Steel Laid	1 1/4"	1 1/4"	1 1/4"
10	1 1/2"	Deck Plating & Steel Laid	1 1/2"	1 1/2"	1 1/2"
11	1 3/4"	Deck Plating & Steel Laid	1 3/4"	1 3/4"	1 3/4"
12	2"	Deck Plating & Steel Laid	2"	2"	2"
13	2 1/4"	Deck Plating & Steel Laid	2 1/4"	2 1/4"	2 1/4"
14	2 1/2"	Deck Plating & Steel Laid	2 1/2"	2 1/2"	2 1/2"
15	2 3/4"	Deck Plating & Steel Laid	2 3/4"	2 3/4"	2 3/4"
16	3"	Deck Plating & Steel Laid	3"	3"	3"
17	3 1/4"	Deck Plating & Steel Laid	3 1/4"	3 1/4"	3 1/4"
18	3 1/2"	Deck Plating & Steel Laid	3 1/2"	3 1/2"	3 1/2"
19	3 3/4"	Deck Plating & Steel Laid	3 3/4"	3 3/4"	3 3/4"
20	4"	Deck Plating & Steel Laid	4"	4"	4"
21	4 1/4"	Deck Plating & Steel Laid	4 1/4"	4 1/4"	4 1/4"
22	4 1/2"	Deck Plating & Steel Laid	4 1/2"	4 1/2"	4 1/2"
23	4 3/4"	Deck Plating & Steel Laid	4 3/4"	4 3/4"	4 3/4"
24	5"	Deck Plating & Steel Laid	5"	5"	5"
25	5 1/4"	Deck Plating & Steel Laid	5 1/4"	5 1/4"	5 1/4"
26	5 1/2"	Deck Plating & Steel Laid	5 1/2"	5 1/2"	5 1/2"
27	5 3/4"	Deck Plating & Steel Laid	5 3/4"	5 3/4"	5 3/4"
28	6"	Deck Plating & Steel Laid	6"	6"	6"
29	6 1/4"	Deck Plating & Steel Laid	6 1/4"	6 1/4"	6 1/4"
30	6 1/2"	Deck Plating & Steel Laid	6 1/2"	6 1/2"	6 1/2"
31	6 3/4"	Deck Plating & Steel Laid	6 3/4"	6 3/4"	6 3/4"
32	7"	Deck Plating & Steel Laid	7"	7"	7"
33	7 1/4"	Deck Plating & Steel Laid	7 1/4"	7 1/4"	7 1/4"
34	7 1/2"	Deck Plating & Steel Laid	7 1/2"	7 1/2"	7 1/2"
35	7 3/4"	Deck Plating & Steel Laid	7 3/4"	7 3/4"	7 3/4"
36	8"	Deck Plating & Steel Laid	8"	8"	8"
37	8 1/4"	Deck Plating & Steel Laid	8 1/4"	8 1/4"	8 1/4"
38	8 1/2"	Deck Plating & Steel Laid	8 1/2"	8 1/2"	8 1/2"
39	8 3/4"	Deck Plating & Steel Laid	8 3/4"	8 3/4"	8 3/4"
40	9"	Deck Plating & Steel Laid	9"	9"	9"
41	9 1/4"	Deck Plating & Steel Laid	9 1/4"	9 1/4"	9 1/4"
42	9 1/2"	Deck Plating & Steel Laid	9 1/2"	9 1/2"	9 1/2"
43	9 3/4"	Deck Plating & Steel Laid	9 3/4"	9 3/4"	9 3/4"
44	10"	Deck Plating & Steel Laid	10"	10"	10"
45	10 1/4"	Deck Plating & Steel Laid	10 1/4"	10 1/4"	10 1/4"
46	10 1/2"	Deck Plating & Steel Laid	10 1/2"	10 1/2"	10 1/2"
47	10 3/4"	Deck Plating & Steel Laid	10 3/4"	10 3/4"	10 3/4"
48	11"	Deck Plating & Steel Laid	11"	11"	11"
49	11 1/4"	Deck Plating & Steel Laid	11 1/4"	11 1/4"	11 1/4"
50	11 1/2"	Deck Plating & Steel Laid	11 1/2"	11 1/2"	11 1/2"
51	11 3/4"	Deck Plating & Steel Laid	11 3/4"	11 3/4"	11 3/4"
52	12"	Deck Plating & Steel Laid	12"	12"	12"
53	12 1/4"	Deck Plating & Steel Laid	12 1/4"	12 1/4"	12 1/4"
54	12 1/2"	Deck Plating & Steel Laid	12 1/2"	12 1/2"	12 1/2"
55	12 3/4"	Deck Plating & Steel Laid	12 3/4"	12 3/4"	12 3/4"
56	13"	Deck Plating & Steel Laid	13"	13"	13"
57	13 1/4"	Deck Plating & Steel Laid	13 1/4"	13 1/4"	13 1/4"
58	13 1/2"	Deck Plating & Steel Laid	13 1/2"	13 1/2"	13 1/2"
59	13 3/4"	Deck Plating & Steel Laid	13 3/4"	13 3/4"	13 3/4"
60	14"	Deck Plating & Steel Laid	14"	14"	14"
61	14 1/4"	Deck Plating & Steel Laid	14 1/4"	14 1/4"	14 1/4"
62	14 1/2"	Deck Plating & Steel Laid	14 1/2"	14 1/2"	14 1/2"
63	14 3/4"	Deck Plating & Steel Laid	14 3/4"	14 3/4"	14 3/4"
64	15"	Deck Plating & Steel Laid	15"	15"	15"
65	15 1/4"	Deck Plating & Steel Laid	15 1/4"	15 1/4"	15 1/4"
66	15 1/2"	Deck Plating & Steel Laid	15 1/2"	15 1/2"	15 1/2"
67	15 3/4"	Deck Plating & Steel Laid	15 3/4"	15 3/4"	15 3/4"
68	16"	Deck Plating & Steel Laid	16"	16"	16"
69	16 1/4"	Deck Plating & Steel Laid	16 1/4"	16 1/4"	16 1/4"
70	16 1/2"	Deck Plating & Steel Laid	16 1/2"	16 1/2"	16 1/2"
71	16 3/4"	Deck Plating & Steel Laid	16 3/4"	16 3/4"	16 3/4"
72	17"	Deck Plating & Steel Laid	17"	17"	17"
73	17 1/4"	Deck Plating & Steel Laid	17 1/4"	17 1/4"	17 1/4"
74	17 1/2"	Deck Plating & Steel Laid	17 1/2"	17 1/2"	17 1/2"
75	17 3/4"	Deck Plating & Steel Laid	17 3/4"	17 3/4"	17 3/4"
76	18"	Deck Plating & Steel Laid	18"	18"	18"
77	18 1/4"	Deck Plating & Steel Laid	18 1/4"	18 1/4"	18 1/4"
78	18 1/2"	Deck Plating & Steel Laid	18 1/2"	18 1/2"	18 1/2"
79	18 3/4"	Deck Plating & Steel Laid	18 3/4"	18 3/4"	18 3/4"
80	19"	Deck Plating & Steel Laid	19"	19"	19"
81	19 1/4"	Deck Plating & Steel Laid	19 1/4"	19 1/4"	19 1/4"
82	19 1/2"	Deck Plating & Steel Laid	19 1/2"	19 1/2"	19 1/2"
83	19 3/4"	Deck Plating & Steel Laid	19 3/4"	19 3/4"	19 3/4"
84	20"	Deck Plating & Steel Laid	20"	20"	20"
85	20 1/4"	Deck Plating & Steel Laid	20 1/4"	20 1/4"	20 1/4"
86	20 1/2"	Deck Plating & Steel Laid	20 1/2"	20 1/2"	20 1/2"
87	20 3/4"	Deck Plating & Steel Laid	20 3/4"	20 3/4"	20 3/4"
88	21"	Deck Plating & Steel Laid	21"	21"	21"
89	21 1/4"	Deck Plating & Steel Laid	21 1/4"	21 1/4"	21 1/4"
90	21 1/2"	Deck Plating & Steel Laid	21 1/2"	21 1/2"	21 1/2"
91	21 3/4"	Deck Plating & Steel Laid	21 3/4"	21 3/4"	21 3/4"
92	22"	Deck Plating & Steel Laid	22"	22"	22"
93	22 1/4"	Deck Plating & Steel Laid	22 1/4"	22 1/4"	22 1/4"
94	22 1/2"	Deck Plating & Steel Laid	22 1/2"	22 1/2"	22 1/2"
95	22 3/4"	Deck Plating & Steel Laid	22 3/4"	22 3/4"	22 3/4"
96	23"	Deck Plating & Steel Laid	23"	23"	23"
97	23 1/4"	Deck Plating & Steel Laid	23 1/4"	23 1/4"	23 1/4"
98	23 1/2"	Deck Plating & Steel Laid	23 1/2"	23 1/2"	23 1/2"
99	23 3/4"	Deck Plating & Steel Laid	23 3/4"	23 3/4"	23 3/4"
100	24"	Deck Plating & Steel Laid	24"	24"	24"

G.M. Standifer  
#2-Coaxet  
#8-Abercos



3/

TRANSFERRED TO  
L. R. SYSTEM

Upper Deck.

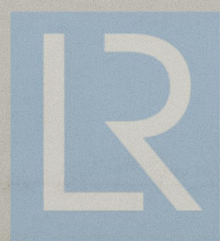
Morelg

$\frac{1}{2}$  EMPIRE PTARMIGAN ex ABERCOS.  
*now New Asia*

$\frac{1}{2}$  " " KINGFISHER ex COAXET

3.2.41

TRANSFERRED TO:  
L. R. SYSTEM



© 2021

Lloyd's Register  
Foundation

010208-010218-0146