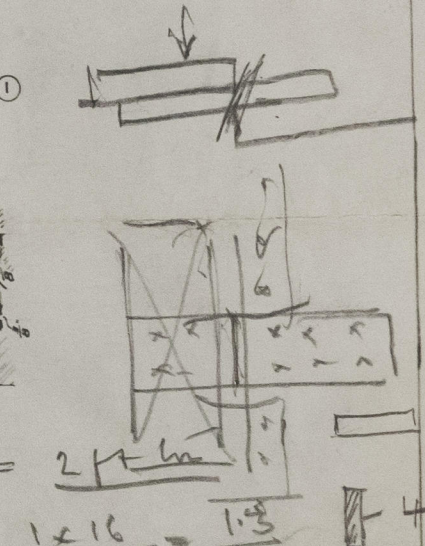
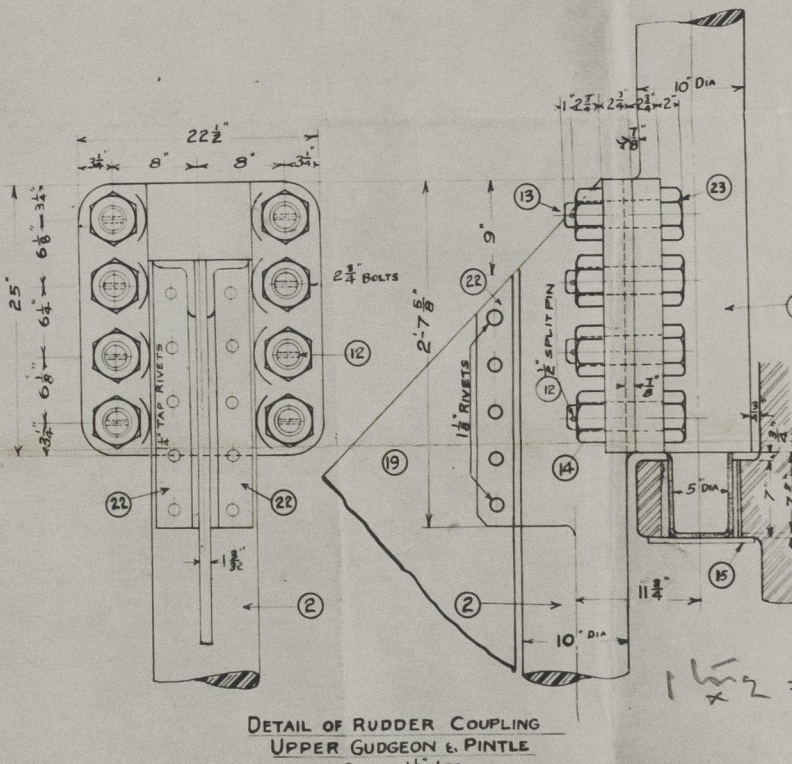
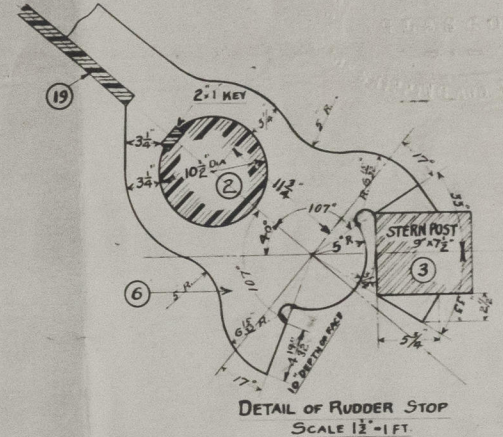
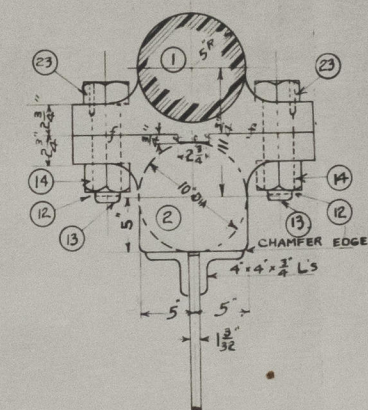
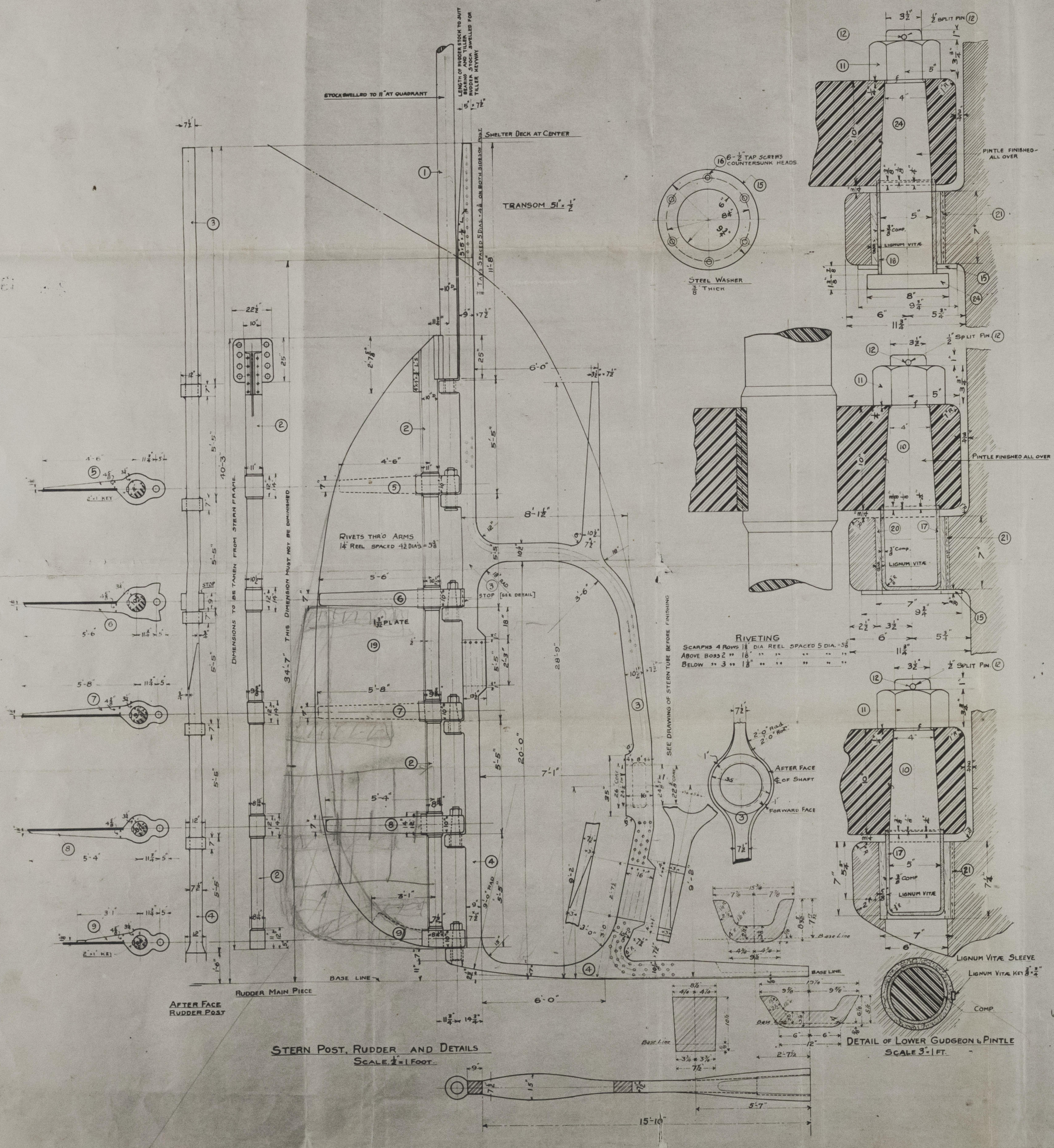


MARK	NAME OF PART	MAT	PAT NO	NOTES
1	RUDDER STOCK	Forged Steel		About 10' Long
2	" MAIN PIECE	Cast Steel		About 2' Long
3	STERN POST	Cast Steel		Top Section
4	" "	"		Lower "
5	RUDDER ARM	Cast Steel		Has Rubber Stop
6	" "	"		"
7	" "	"		"
8	" "	"		"
9	" "	"		"
10	" PINTLE	Forged Steel		5' x 4' x 1/2"
11	" PINTLE NUTS	"		Hex 2nd Thread
12	" SPLIT PINS	"		2" Round Heads
13	" COUPLING BOLTS	"		Hex 3rd Thread
14	" COUPLING NUTS	"		Hex 3rd Thread
15	" WASHERS	"		"
16	" TAP SCREWS	Steel		1" x 1/2" x 1/2"
17	" PINTLE CAPS	Comp		1" x 1/2" x 1/2"
18	" PINTLE CAP	"		1" x 1/2" x 1/2"
19	" RUDDER PLATE	Steel		1" x 1/2" x 1/2"
20	" PINTLE BUSHINGS	Lignum Vite		1" x 1/2" x 1/2"
21	" PINTLE BUSHING KEYS	"		1" x 1/2" x 1/2"
22	" ANGLES	Steel		"
23	" KEY 1/2" DIA	"		"
24	" RUDDER PINTLE WITH HEAD	Forged Steel		2' x 1/2" Long

3 MAR 1941



SPEED UNDER 12 KNOTS	
A. TOTAL RUDDER AREA ABFT. OF PINTLES	151.965"
D. DISTANCE OF ITS C.O.G. ABFT. OF PINTLES	3.167'
A x D	481.273

$$9.0 \times 100 \frac{900}{1000} = .9$$

FORGINGS TO BE THOROUGHLY ANNEALED AND TESTED IN ACCORDANCE WITH REQUIREMENTS OF AMERICAN BUREAU OF SHIPPING.

Agencies Coaxet.

G. M. STANDIFER CONSTRUCTION CORP.
ENGINEERS Vancouver, Wn. SHIPBUILDERS
STERN FRAME ETC. HULLS
HULLS-10-INC. AND RUDDER 1003-1072 INC.

DRAWN CHECKED
THROU APPROVED
REFER

Additional area agreed to by O.S. 13.10.41 and sketch given to Mr. Sanderson - Officers Superintendent.

9

TRANSFERRED TO:
L. R. SYSTEM

Rudder & Sternframe

now

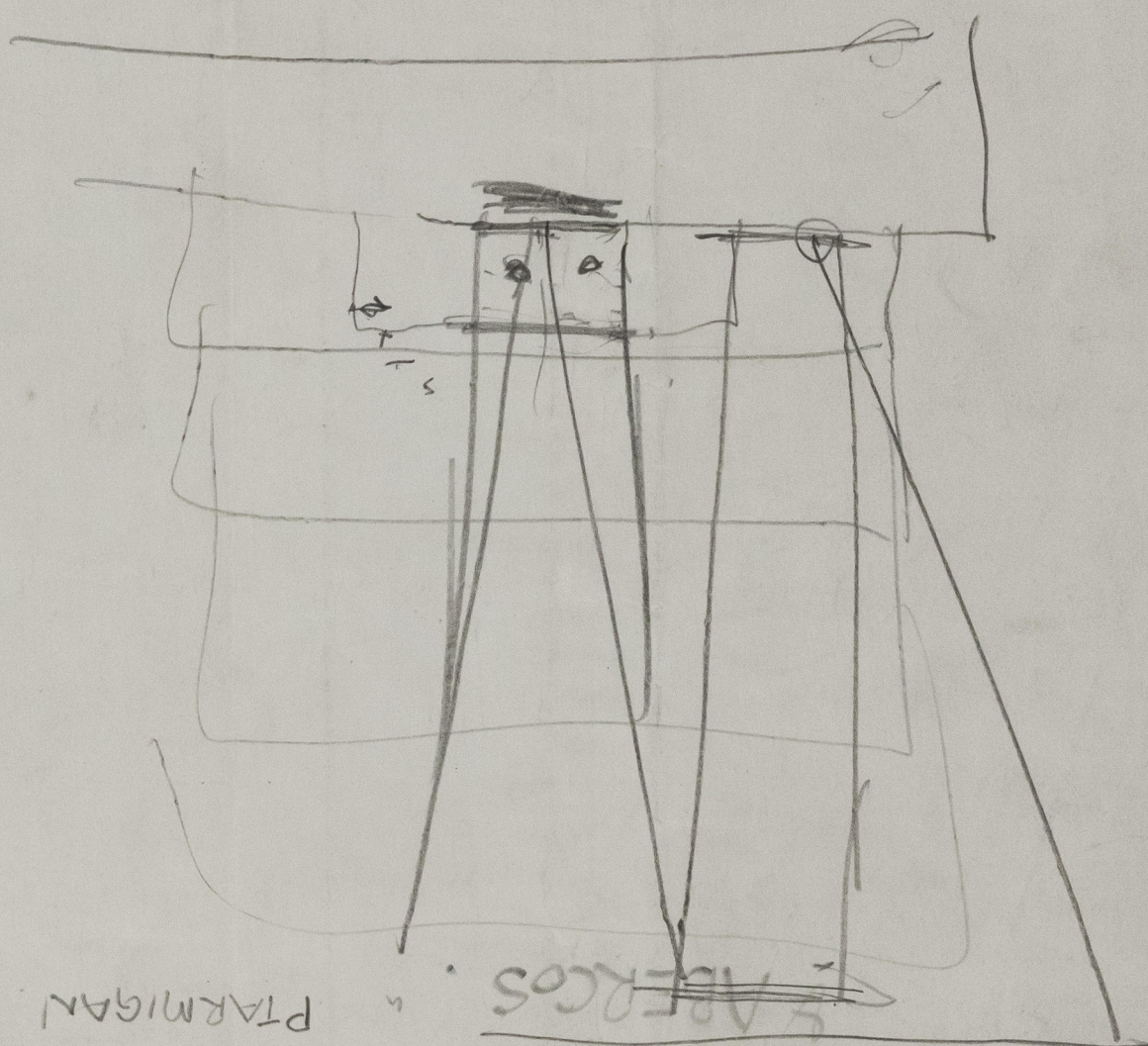
$\frac{1}{2}$ EMPIRE PTARMIGAN ex ABERCOS.
now New Asia

$\frac{1}{2}$ " " KINGFISHER. ex COAXET.

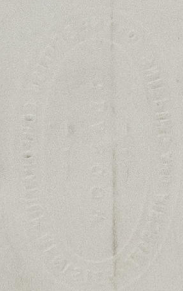
TRANSFERRED TO:
L. R. SYSTEM

Raft.

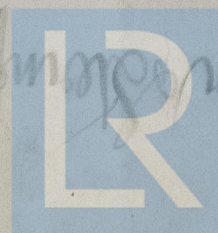
010208-010218-0143



PTARMIGAN
ex ABERCOS.
now EMPIRE KINGFISHER
ex COAXET



Rudder & Sternframe



© 2021
Lloyd's Register
Foundation