

REVISIONS			
DATE	MADE BY	APPROVED	ALTERATION TO:

3 MAR 1941

**DIMENSIONS**  
 LENGTH B.P. = 402'-6" *LOA 412' 6"*  
 BREADTH MLD = 53'-0" *412' 6"*  
 DEPTH TO UPPER DECK = 26'-6"  
 " " SHELTER = 34'-6"

**EQUIPMENT**  
 2 BOWER ANCHORS 765 LBS. EACH  
 1 SPARE BOWER ANCHOR 6310 - -  
 1 STREAM ANCHOR 765 - -  
 1 KEDGE ANCHOR 1135 - -  
 (ALL ANCHORS STOCKLESS)  
 2 1/2" STUD CHAIN CABLE 210 FATHOMS  
 4 1/2" STEEL WIRE (STREAM) 30 - -  
 3" STEEL WIRE (TOWWIRE) 120 - -  
 2-8" & 2-7" HAWSERS 30 - - EACH

**STEM & STEER FRAME**  
 STEM 10 1/2" x 2 1/2"  
 RUDDER POST 9" x 7 1/2"  
 PROPELLER POST 10 1/2" x 7 1/2"  
 RUDDER AS PER RULE TO BE SUBMITTED

**BULKHEADS**  
 SEE PROFILE FOR SCANTLING

**PILLARS & BIRDERS**  
 SEE PROFILE FOR SCANTLING

**SHAFT TUNNEL**  
 TOP PLATING 5/8"  
 TOP PLATING UNDER HITCHES 7/8"  
 SIDE PLATING 1/2"  
 STIFFENERS - SPACED 3' 6" x 3 1/2" x 3/4" L

**FOOT**  
 STRINGER PLATE 5/8"  
 DECK PLATING 3/4"  
 SIDE PLATING 1/2"

**FORECASTLE**  
 STRINGER PLATE 5/8"  
 DECK PLATING 3/4"  
 SIDE PLATING 1/2"  
 STRINGER ANGLE 3 1/2" x 3 1/2" x 1/2"

**FRAMING**  
 PEAK FRAMES 4" x 3" x 1/2" SPACED 24"  
 REVERSE PEAK FRAMES 4" x 3" x 1/2"  
 REVERSE FRAMES EXTEND ALTERNATELY TO SHELTER DECK  
 POOF OR FOCSLE DECKS  
 SEE PROFILE FOR FURTHER DETAILS

**RIVETING SCHEDULE**  
 KEEL BUTTS:- QUADRUPLE BUTTS TO TREBLE AT ENDS.  
 SHELL PLATING BUTTS:- TREBLE RIVETED OVERLAPS FORE & AFT.  
 SHEER STRAKE & STRAKE BELOW BUTTS:- QUADRUPLE OVERLAPS FOR 1/2 L TO TREBLE AT ENDS.  
 SHELTER DECK STRINGER BUTTS:- TREBLE RIVETED OVERLAPS FOR 1/2 L TO DOUBLE AT ENDS.  
 SHELTER DECK PLATING BUTTS:- DOUBLE OVERLAPS FOR 1/2 L TO SINGLE AT ENDS.  
 UPPER DECK STRINGER BUTTS:- DOUBLE OVERLAPS FORE & AFT.  
 UPPER DECK PLATING BUTTS:- DOUBLE OVERLAPS FOR 1/2 L TO SINGLE AT ENDS.  
 TANK TOP CENTER STRAKE BUTTS:- TREBLE OVERLAPS FOR 1/2 L TO DOUBLE AT ENDS.  
 TANK TOP REMAINDER BUTTS:- DOUBLE OVERLAPS FOR 1/2 L TO SINGLE AT ENDS.  
 TANK SIDE BUTTS:- TREBLE RIVETED OVERLAPS FORE & AFT.  
 CENTER GIRDER BUTTS:- TREBLE RIVETED OVERLAPS FORE & AFT.

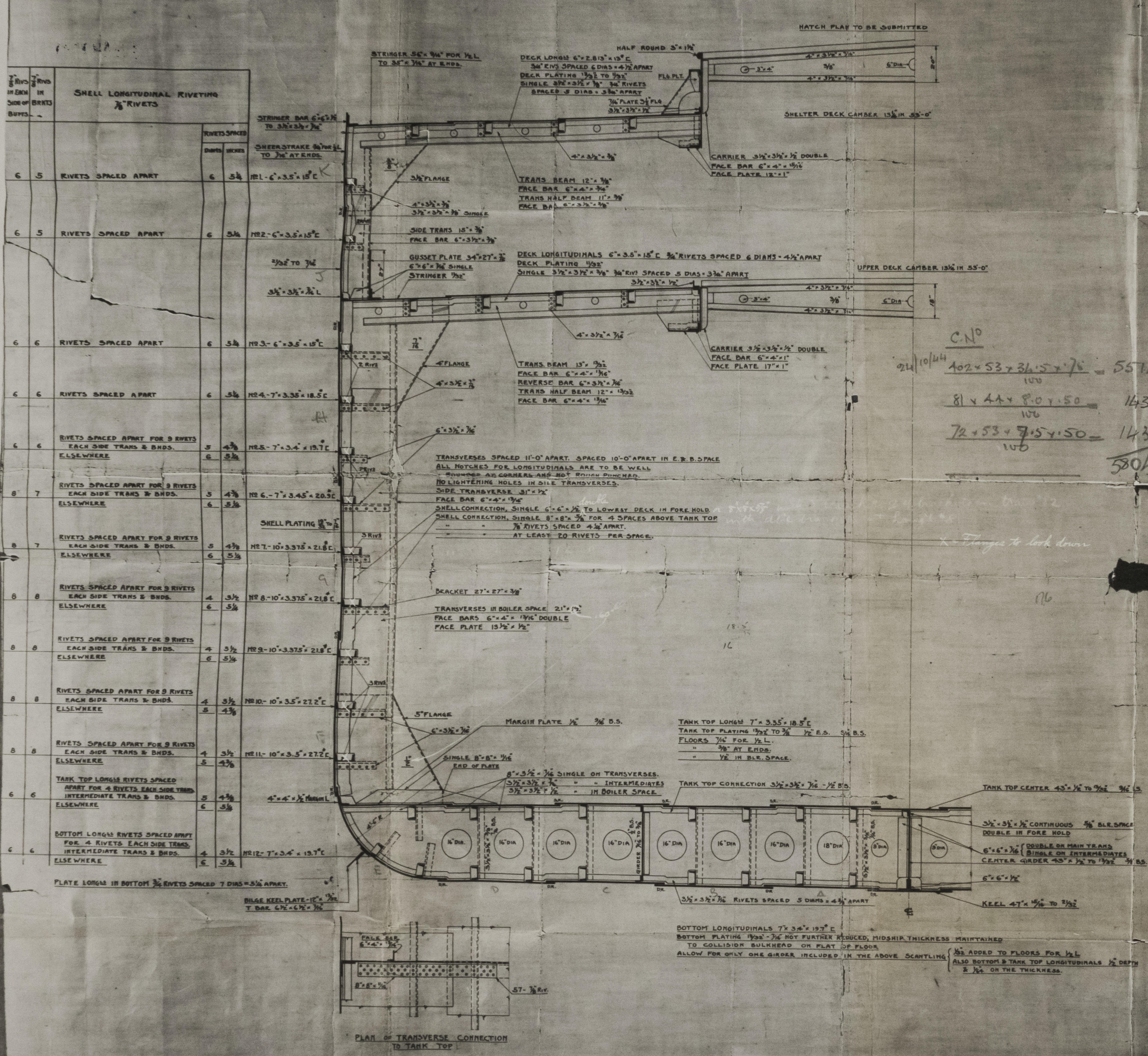
Abercos Coquet.

NO.	DATE	REMARKS
10		
9		
8		
7		
6		
5		
4		
3		
2		
1		

G.M. STANDIFER CONSTRUCTION CORP.  
 VANCOUVER, WASH.  
 HULL DEPT.

MIDSHIP SECTION  
 HULLS 1-10 INCL.  
 HULLS 1063-1072 INCL.

DRAWN BY: J.F.K. APPROVED BY: J.F.K. SCALE: 1/2" = 1'-0"  
 CHECKED BY: J.F.K. DATE: 1-15-57



C.N.  
 24/10/44 102 x 53 x 36.5 x 7.6 = 5574  
 81 x 44 x 8.0 x 5.0 = 143  
 72 x 53 x 7.5 x 5.0 = 143  
 5804

Flanges to look down

16



1  
TRANSFERRED TO:  
L. R. SYSTEM

Midship Section

Novelty

1/2 EMPIRE PTARMIGAN ex ABERCOS

now New Asia

2/5 " " KINGFISHER ex COAXET.

TRANSFERRED TO:  
L. R. SYSTEM

2.2.81

Section

010208-010213-0142

Midship Section

2/5 COAXET

ABERCOS

Empire Ptarmigan

Ptarmigan



© 2021

Lloyd's Register  
Foundation