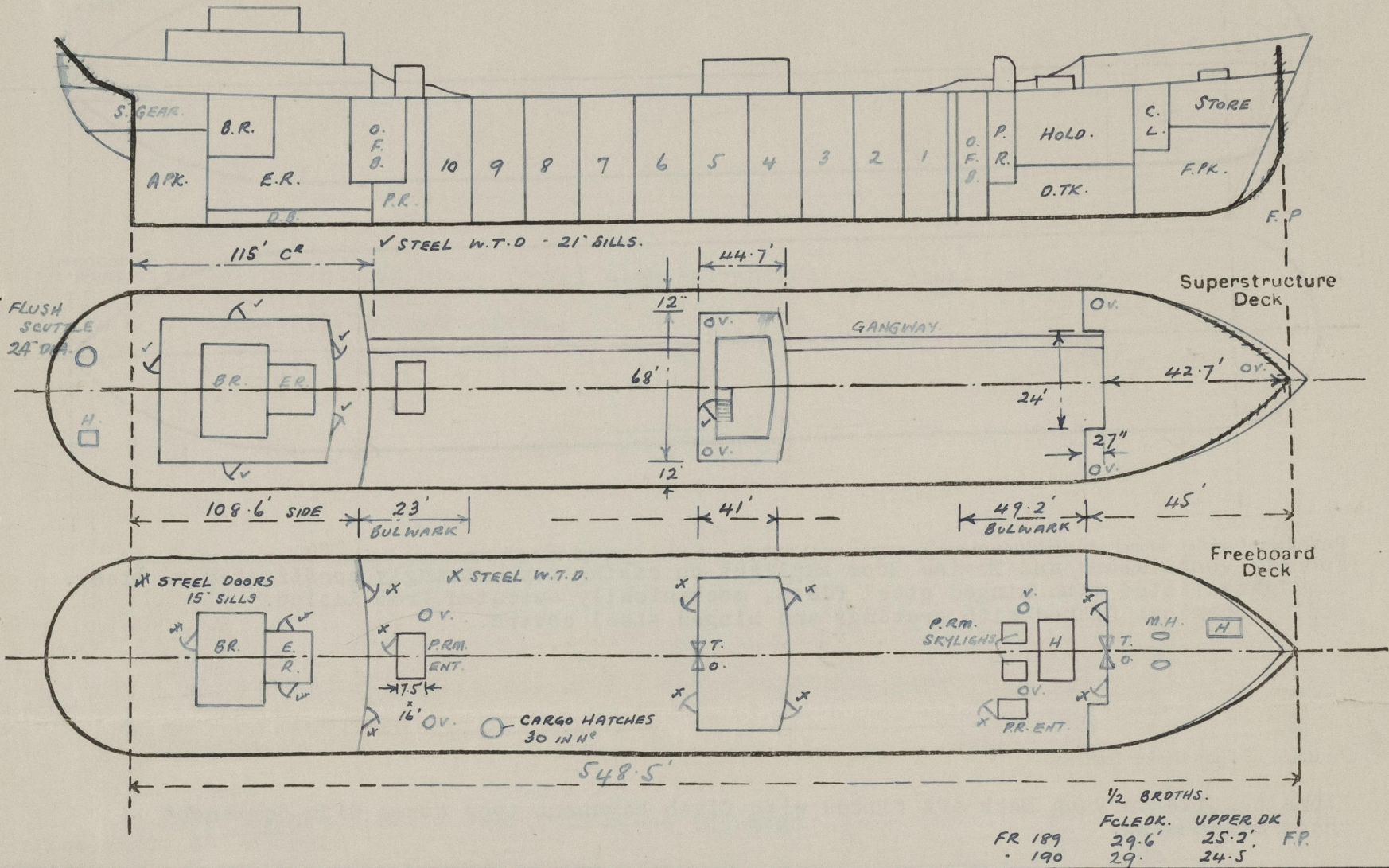


Lloyd's Register of Shipping.
SURVEYS FOR FREEBOARD.
(CONDITIONS OF ASSIGNMENT.)

31 MAR 1955

Ship's Name "OCEAN TRADER" Port of Survey NEW YORK
Official Number 319 Surveyor's Signature J. D. David Dick
Nationality and Port of Registry LIBERIAN, MONROVIA Date of Survey December 17, 1954

Disposition and dimensions of superstructures, trunks, deckhouses and machinery casings to be inserted in the diagrams and tabular statement:—

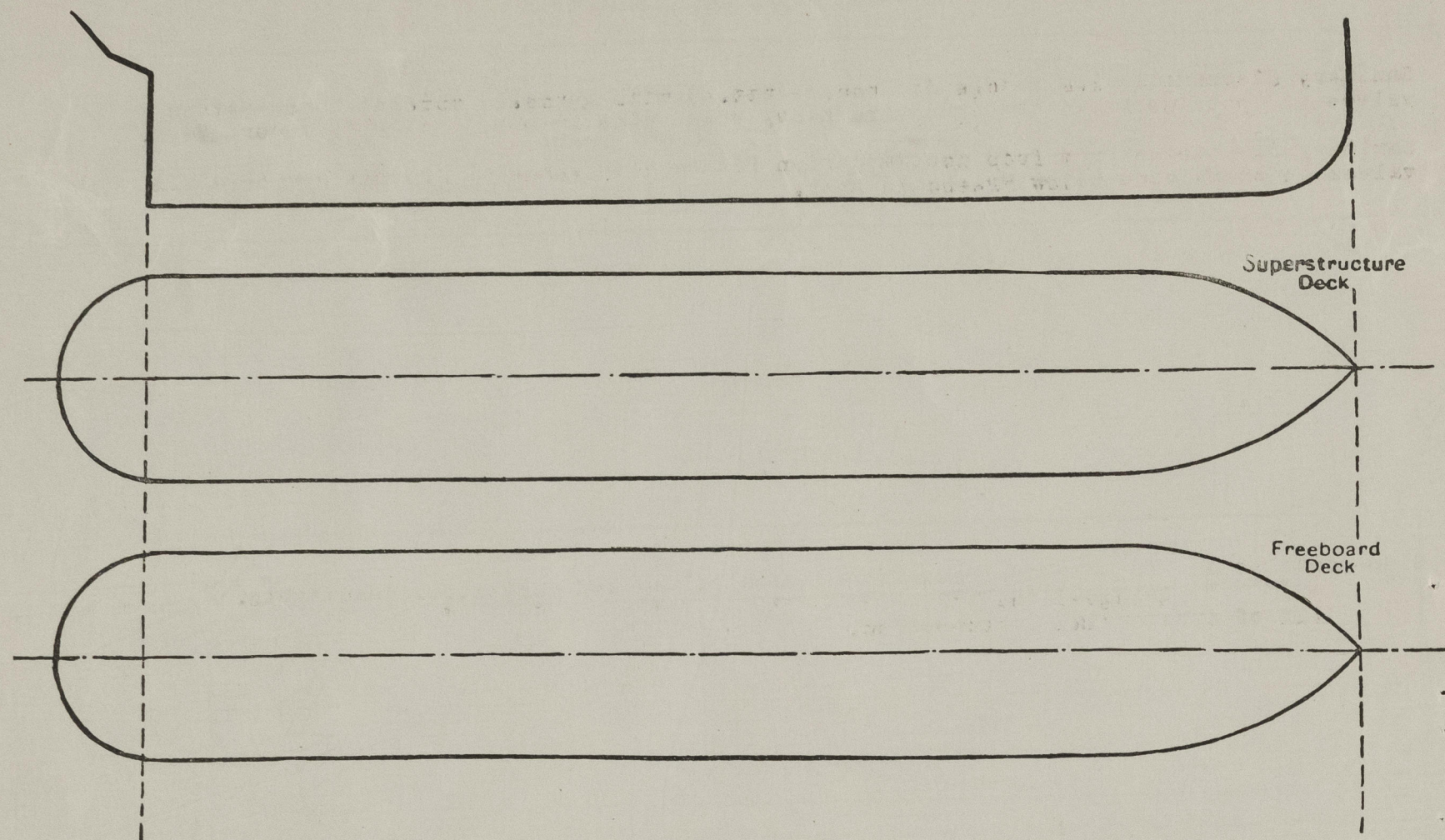


Particulars of Superstructures, Trunks, Casings, Deckhouses.								
	Coaming	Plating	Stiffeners	Spacing	End Attachments of Stiffeners	Size of Openings	Height of Sills	Height of Casings
Poop Bulkhead ... ..	6"x.47"	.43"	11"x3½"x .43" B.A.	30"	Brkts. At Top E.W. To Deck	2@ 55"x26½"	27"	9.6'
Raised Quarter Deck Bulkhead ...	-							
Bridge, After Bulkhead ... ..	6"x.40"	.32"	4½"x3"x .32"	27"	E.W. To Deck Top & Bottom	55"x48" T.O. 60"x27"	21"	9.6'
Bridge, Forward Bulkhead ... ..	6"x.50"	.43"	11"x3½"x .43" B.A.	30"	Brkts. At Top E.W. To Deck	2@ 60"x27"	21"	9.6'
Forecastle Bulkhead ... ..	6"x.40"	.32"	3"x3"x.32" O.A.R.	36"	Brkts. At Top E.W. To Deck	55"x48" T.O. 55"x26½"	24" 27"	(10' Aft. 12' F.P.)
Trunk, Aft ... ..								
Trunk, Forward ... ..								
Exposed Machinery Casings on Free-board or Raised Quarter Decks ...								
Exposed Machinery Casings on <del>xxxx</del> Boat Dk. ...	15"x.35"	.35"	3"x2½"x.32" O.A.R.	30"	Top Brkts. Bottom E.W.	58"x27½"	22"	10.2'
Machinery Casings within Superstructures not fitted with Class I Closing Appliances ... ..			Class 1 Doors Fitted to Poop Front.					
Poop & Bridge Deckhouses on <del>xxxx</del> Decks <del>xxxx</del> ...			Steel of Efficient Construction.					
Particulars of Closing Appliances (state if capable of being manipulated from both sides).								
Poop Bulkhead ... ..	Steel W.T. hinged doors				Manipulated from both sides.			
Pump Room Entrances <del>xxxxxx</del> ...	"	"	"	"	"	"	"	"
Bridge, After Bulkhead ... ..	Tonnage opening doors .32" steel plate				1" dia. hook bolts spaced 12" apart with 3"x3"x40" O.A. stiffeners.			
Bridge, Forward Bulkhead ... ..	Steel W.T. hinged doors				Manipulated from both sides.			
Forecastle Bulkhead ... ..	Tonnage opening doors .32" steel plate				1" dia. hook bolts spaced 12" apart with 3"x3"x.40 O.A. stiffeners.			
Exposed Machinery Casings on Free-board or Raised Quarter Decks ...	None							
Exposed Machinery Casings on <del>xxxx</del> Boat Deck ...	Steel W.T. hinged door				Manipulated from both sides.			
Machinery Casings within Superstructures not fitted with Class I Closing Appliances ... ..	None							
Poop & Bridge Decks <del>xxxx</del> ...	Steel W.T. hinged doors 21" sills				Manipulated from both sides.			



# PARTICULARS OF PROTECTION TO OPENINGS, ETC.

The following diagrams should be used to indicate the positions of cargo and coaling hatchways, gangway, cargo and coaling ports, ventilators, companionways, etc., which would affect the seaworthiness of the ship:—



Particulars of fiddle, funnel and ventilator coamings, engine room skylight and other openings in machinery casing tops and their means of closing:—  
 Funnel, ventilators and Engine Room skylight on casing top, strongly constructed of steel.  
 Skylights fitted with hinged steel flaps, mechanically operated from inside.  
 Fiddle openings fitted with gratings and hinged steel covers.

## Particulars of Flush Bunker Scuttles:—

Stone scuttle on Poop Deck aft fitted with flush bayonet type cover with permanent chain attachment.

## Particulars of Companionways:—

Pump Room entrances in fore and after wells on Freeboard Deck efficiently constructed of steel and fitted with hinged steel W.T. doors manipulated from both sides, sills 25".

## Particulars of Ventilators in exposed positions on freeboard and superstructure destructure decks:—

Forecastle Deck: 2 @ 25" dia. Coamings 36"x.40"  
 1 @ 12" " " 36"x.33"  
 Upper Deck Ford: 2 @ 18" " " 12'-9"x.40" suitably stayed.  
 " " Aft: 2 @ 25" " " 18'-6"x.40" "  
 Bridge Deck: 2 @ 12" " " 30"x.33"

Vents closed by steel galvanized portable plates and canvas covers.

## Particulars of Air Pipes in exposed positions on freeboard, raised quarter, or superstructure:—

F'cle. Dk: 2" @ 4" dia. x 18" to opening - to F.P. Tk.  
 2" @ 4" " x 18" " - F.O. Tk. Fowd. ✓ suitably stayed.  
 Upper Dk: 2" @ 6" " x 36" " - Deep Tk. all air pipes closed by hinged W.T. covers.  
 1" @ 1" " x " " - Sea box in cofferdam fowd.  
 2" @ 4" " x " " - Cofferdam fowd.  
 ✓ 2" @ 6" " x 9'-3" " - F.O. Tk. (P.&S. Aft) mouths of air pipes to oil fuel tanks fitted with wire gauze.  
 ✓ 1" @ 6" " x 9'-3" " - F.O. Settling Tk. (CR)  
 Poop Dk: 2" @ 2" " x 18" " - E. Rm. Fowd. Coff. D.B.  
 4" @ 3" " x " " - Feed water Tk. Fowd. D.B.  
 1" @ 2" " x " " - E. Rm. Coff. D.B.  
 2" @ 3" " x " " - Feed water Tk. Aft. D.B.  
 2" @ 4" " x " " - F.N. Tks. in Twn. Dks.  
 2" @ 4" " x " " - Aft. Pk. Tank  
 1" @ 1" " x " " - Rudder Box.

## Skylights.

Particulars of ~~Skylights~~

Skylights P. & S. above Forward Pump Room.  
 Steel bolted covers with hinged W.T. flaps secured by toggles.  
 Fixed bullseye glasses with steel deadlights strongly constructed.

## Particulars of Scuppers and Sanitary Discharge Pipes:—

Sanitary discharges from Bridge deckhouses fitted with gunmetal automatic non-return valves on upper deck led through extra heavy steel pipe to shell below Freeboard Deck.

Sanitary discharges from Poop accommodation fitted with gunmetal automatic non-return valves on ship's side below Freeboard Deck.

## Particulars of Side Scuttles:—

Side-scuttles in Poop-hinged brass frames with galvanized cast steel deadlights.  
 " " " Bridge-fixed " " " " " "  
 All of substantial construction.

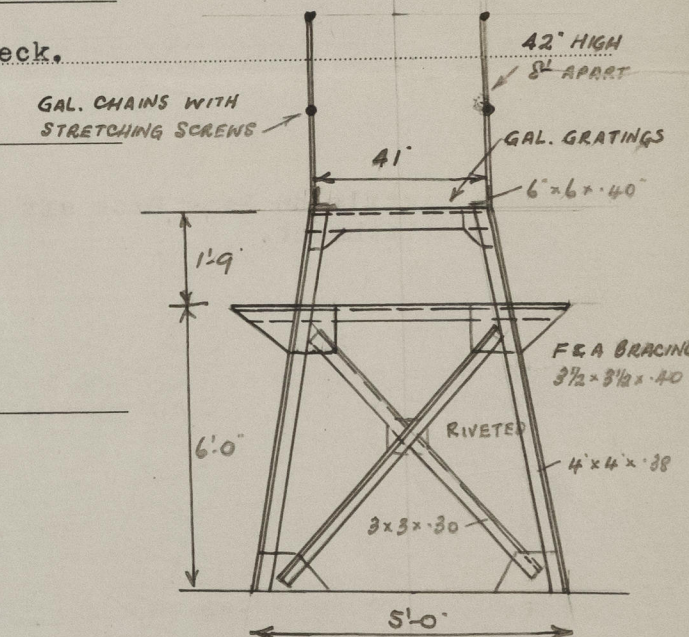
Vertical distance of Sill of lowest Side Scuttle above top of keel - all above Freeboard Deck.

## Particulars of Guard Rails:—

F'cle. and Poop Decks - 3 rails with stanchions 42" high spaced about 48" apart.  
 Upper Deck - 2 equally spaced galv. chains with stretching screws - stanchions 42" high spaced about 52" apart.

## Particulars of Gangways, Lifelines, etc:—

F. & A. gangway fitted in wells with transvers<sup>2</sup> supports as shown in sketch spaced about 8'-0" apart with suitable diagonal bracing fitted fore and aft.



## Particulars of Freeing Arrangements.

	Length of Bulwark	Height of Bulwark	Size of Freeing Ports	Number each side	Area each side	Rule area each side
After Well ... ..	23'	3'-6"	None	-	-	-
Forward Well ... ..	49'	3'-6"	None	-	-	-
State position of each freeing port ... .. { After Well:— - open rails. 9 1/4" /						
(F. and A. position and height above deck edge) { Forward Well:— -						
State whether the freeing ports are fitted with shutters, bars, or rails, and give particulars of such:—						
Additional area where sheer is less than standard.						



PARTICULARS OF PROTECTION TO OPENINGS, ETC.

HATCHWAYS ON FREEBOARD AND SUPERSTRUCTURE DECKS.												
FREEBOARD DECK										POOP DECK		
Description of Hatchway	...	...	Cargo Tanks	Cofferdams	Fuel Oil Tanks	11 Deep Trunk	Hatch In F'ocle.	Fore Hold	Chain Lr. Manholes	Store Hatch		
Dimensions of Hatchway	...	...	48"Dia.	24"Dia.	30"Dia.	27"Dia.	36"x36"	9'x16'	18"x14"	4'x4'		
COAMINGS	{	Height above Deck	...	33"	24"	33"	33"	9"	35"	3"	27"	
		Thickness	...	.63"	.63"	.63"	.63"	.35"	.43"	.31"	.40"	
		Sides	...									
		Ends	...									
		Stiffeners	...	-	-	-	-	7"B.B.	-			
		Brackets, Stays	...	-	-	-	-	1B.B. Stay -	-			
HATCH BEAMS	{	Number	...									
		Spacing	...									
		Scantling and Sketch	...									
		Bearing Surface	...					Hatch Cover Stiffened By 5"x3"x .32" O.A. 10e E.W. Spaced 32"				
FORE AND AFTERS	{	Number	...									
		Spacing	...									
		Unsupported Lengths	...									
		Scantling and Sketch	...									
		Bearing Surface	...									
HATCH COVERS W.T. or O.T.	{	Material	...	Steel	Steel	Steel	Steel	Steel	Steel		Steel	
		Thickness	...	.50"	.50"	.50"	.50"	.32"	.50"	.35"		.40"
		How fitted	...	Hinged	Hinged	Hinged	Hinged	Hinged	Hinged	-		Hinged
		Bearing Surface	...									
Spacing of Cleats	...	...	Screw	5	5	5	Screw	Screw	4		Screw	
Number of Tarpaulins	...	...	Down Bridge	Screw Toggles	Screw Toggles	Screw Toggles	Toggles 25" apart	Toggles 24" apart	Screw Toggles		Toggles 21" apart	
*Are wood fore and afters steel shod at all bearing surfaces? -												
Are battens and wedges efficient and in good condition? -												
Are tarpaulins in good condition and in accordance with rule requirements? -												
Are lashings provided in accordance with rule requirements? -												

Particulars of any special features:— -

Endorsement at first survey and at surveys for renewal of Certificate:—

The fittings and appliances are in accordance with the particulars shown on this form (or as now modified) and are in good condition.

