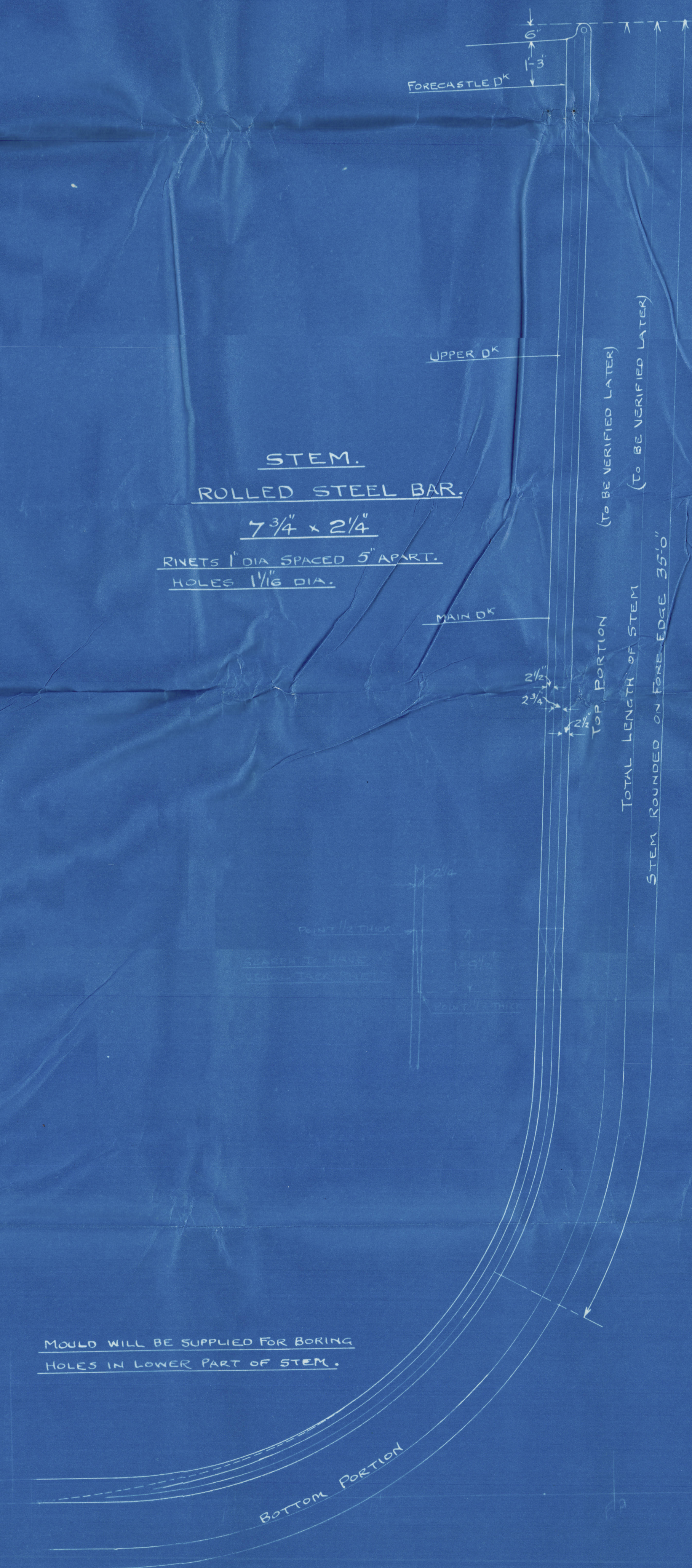
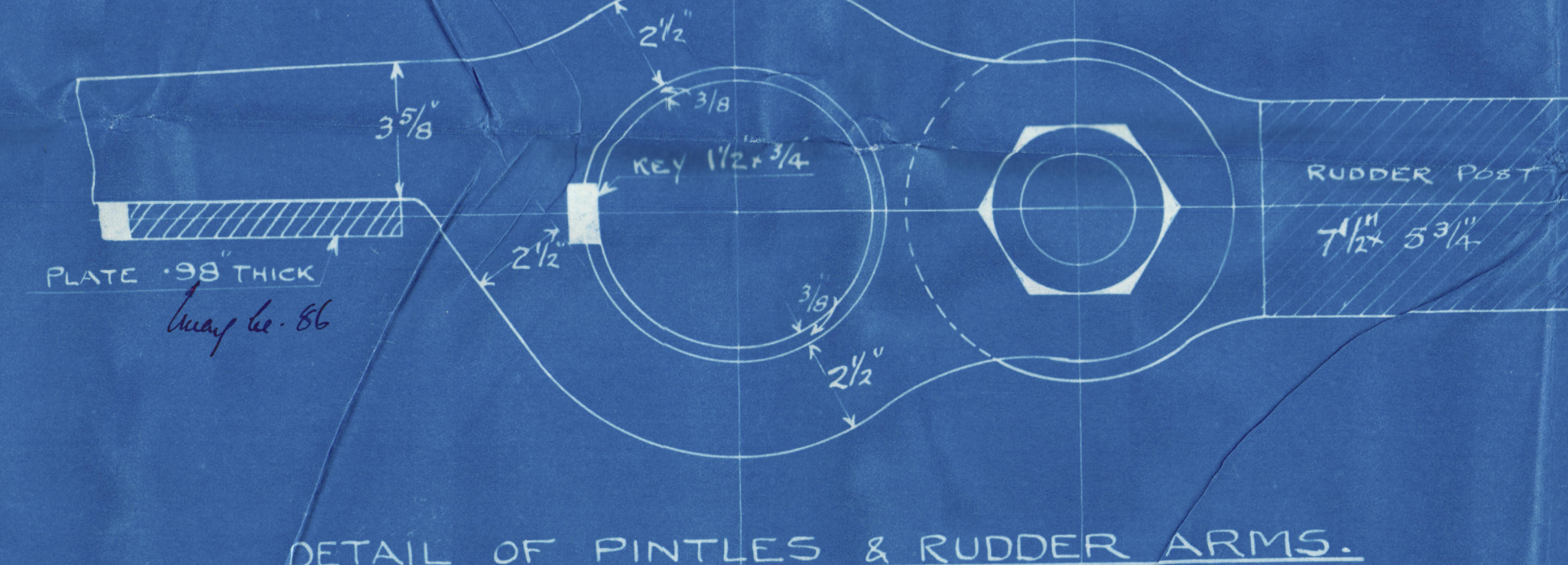
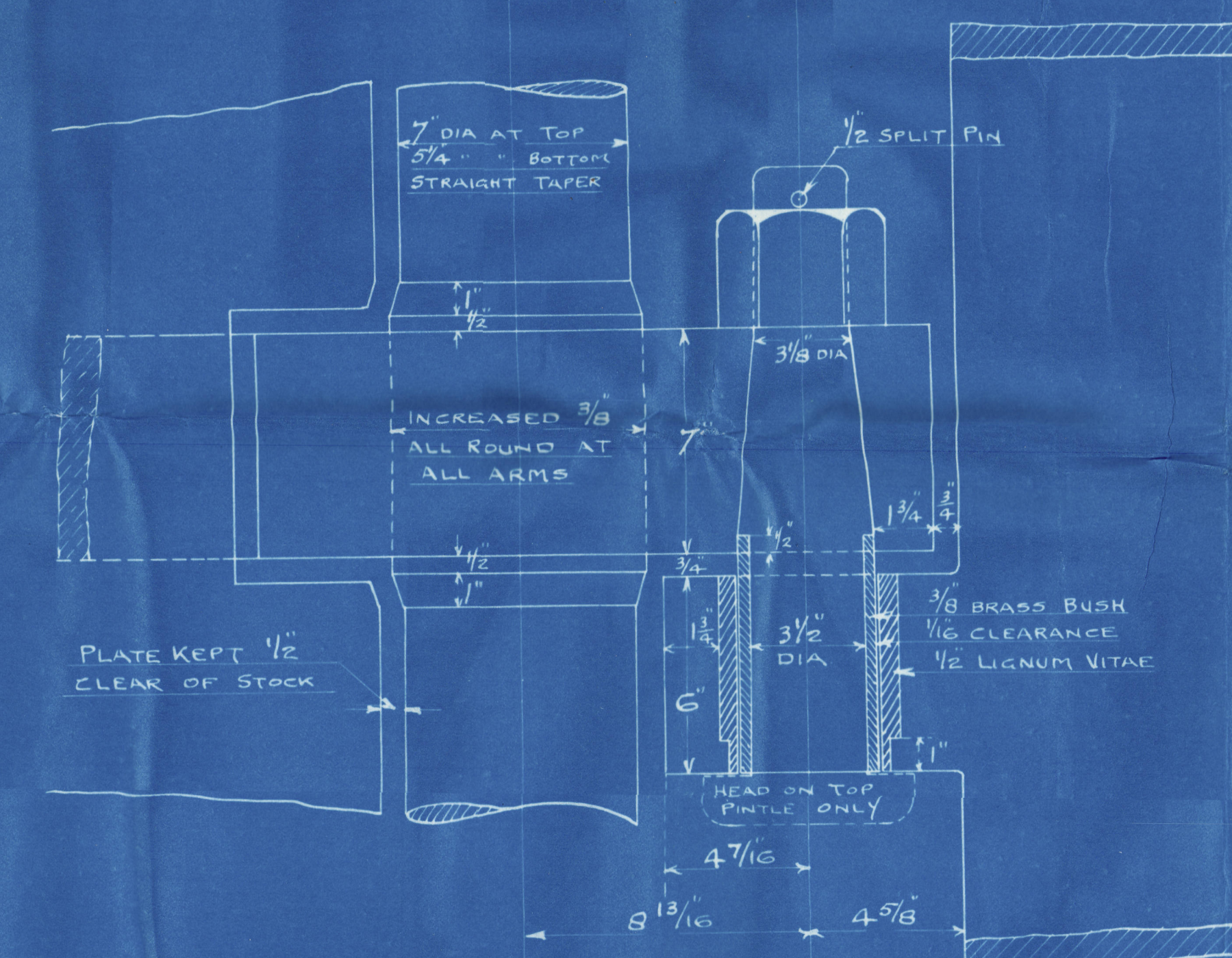
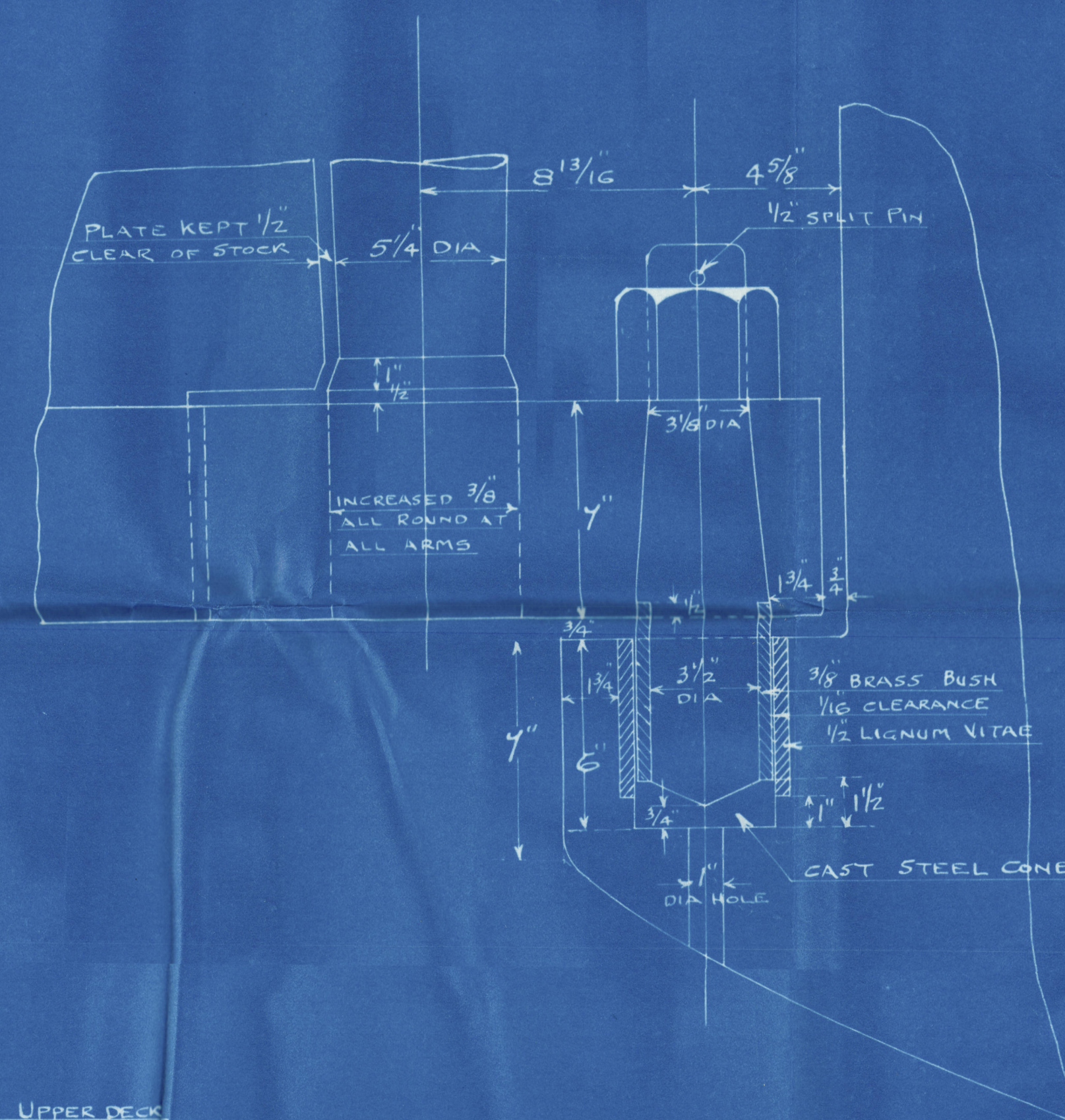


# S.S. N<sup>o</sup>s 392-3-4. STEM. STERNPOST & RUDDER.

SCALE  $\frac{1}{2}$ " = 1 FOOT.  
DETAILS 3" = 1 FOOT

STEM ROLLED STEEL BAR  
STERNPOST CAST STEEL  
RUDDER FORGING

AREA OF RUDDER = 74.812.  
C.G. FROM C<sup>n</sup> OF PINTLES = 2.672.  
A x D = 199.89.  
SPEED 11 KNOTS = 7" DIA STOCK.  
ALL TO LLOYDS APPROVAL.





Wm Hamilton & Co Ld

No 392-3-4.

Stem, Sternpost & Ruddet.

392. S.S. "Kosviken"



Gek. Rep. No 18482.

393. S.S. "Daviken"

Gek. Rep. No. 18498.

S.S. "Sandviken"

Gek. Report No 18503.

PLANS TRANSFERRED  
TO SISTER VESSEL

Nego San  
Sl. Sa 670

Lloyd's Register  
Foundation