

Vapor Ramón Alonso-R

Cuaderna maestra, perfil longitudinal, cubiertas

Escala 1:50 y 1:200

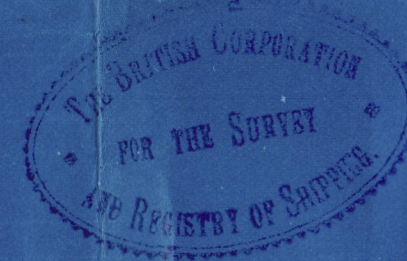
Características
 eslora=112,7 mts. = 370 PIES
 manga=14,02 mts. = 46 "
 puntal = 7,82 mts. 25'-8"

Calderas 2-3-4-7

$$\frac{370 \times 46 \times 25 \times 75}{100} = 3640$$

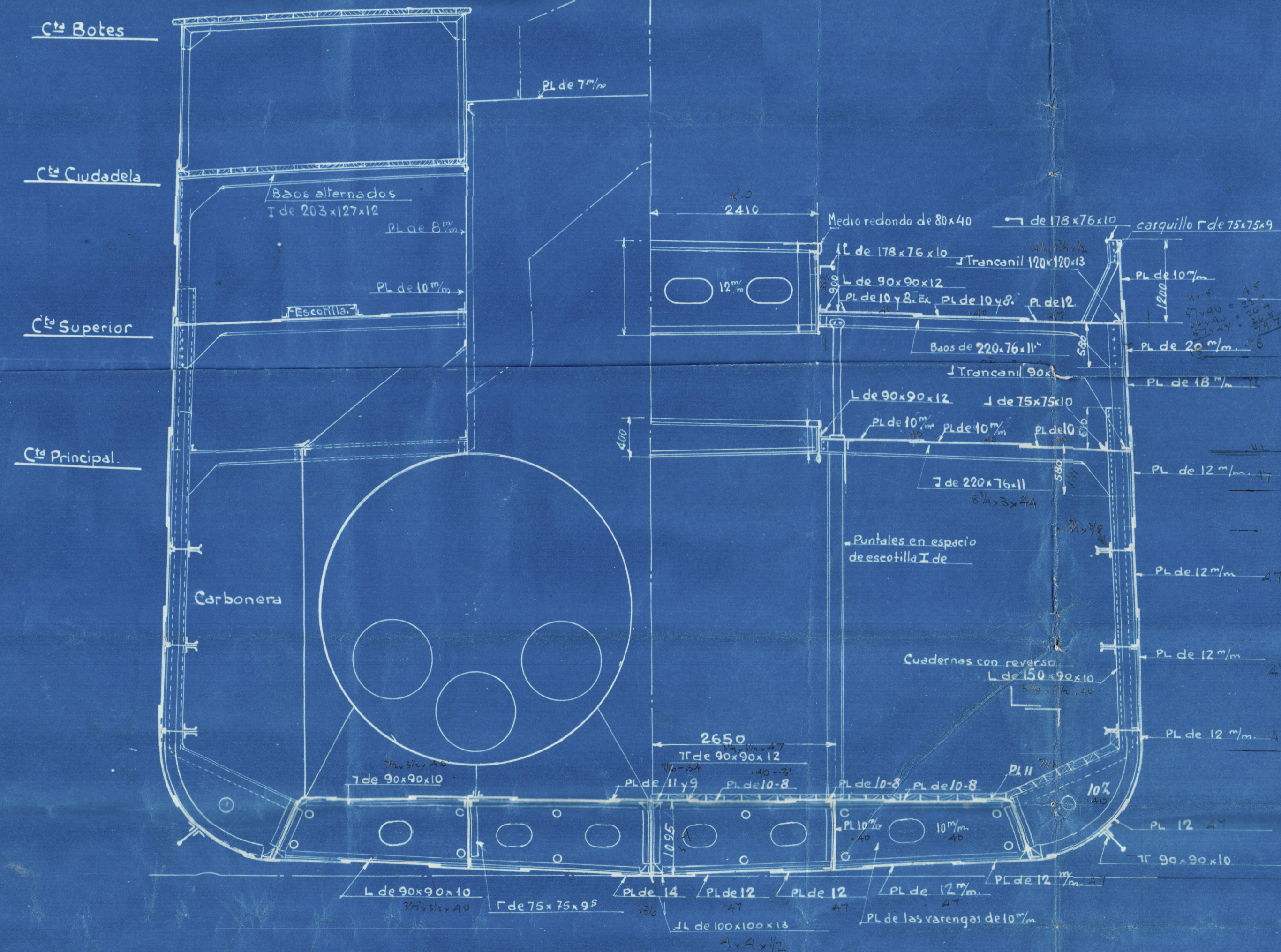
 P.B.R.
$$\frac{174 \times 46 \times 75 \times 50}{100} = 260$$

$$\frac{3900}{3900}$$

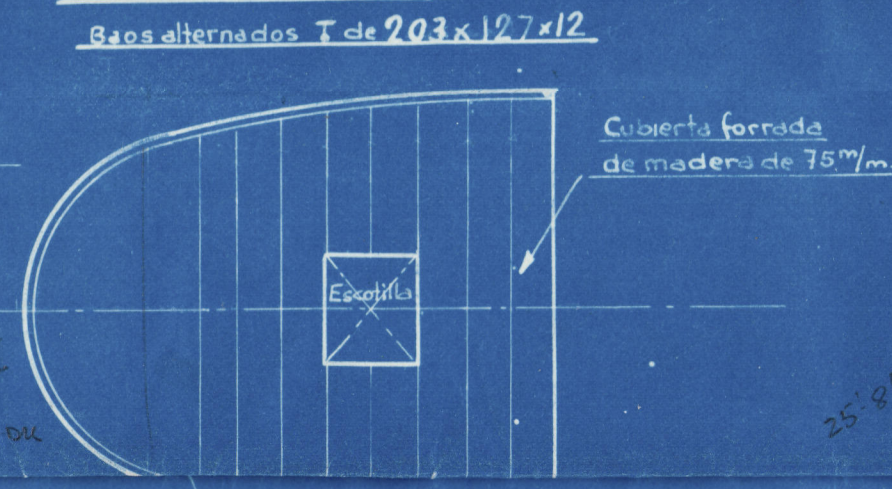


SECCION POR CALDERAS

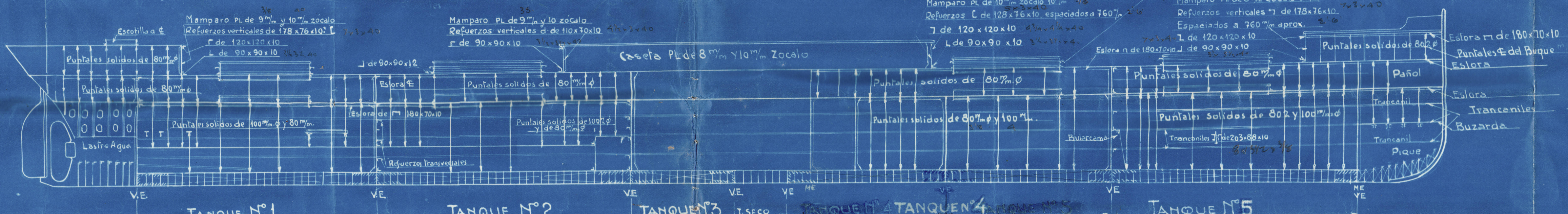
SECCION POR UNA BODEGA



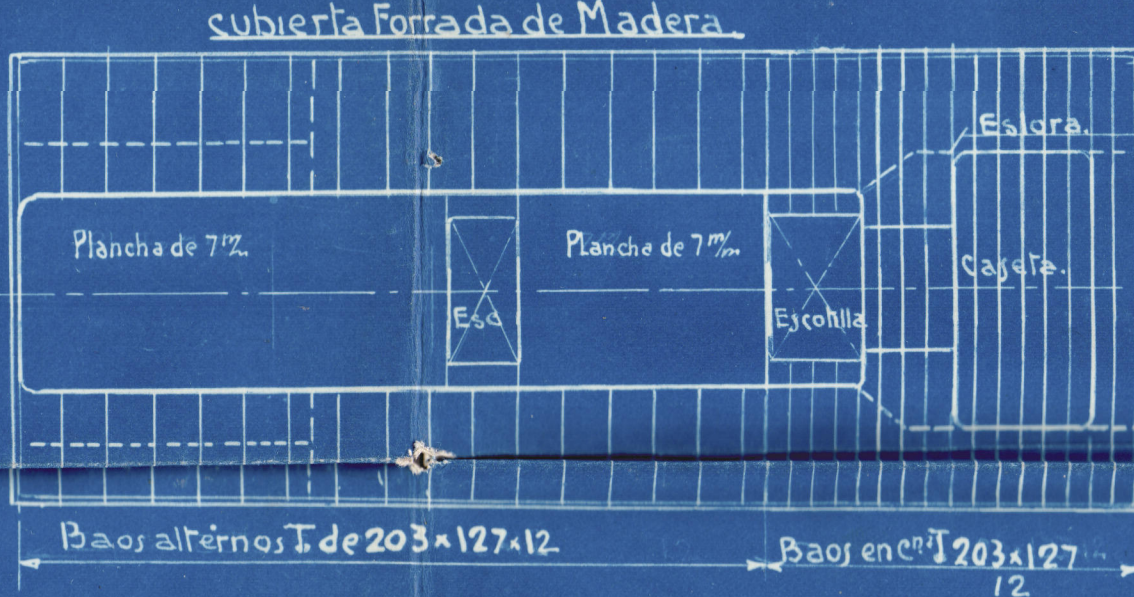
C^{ta} TOLDILLA



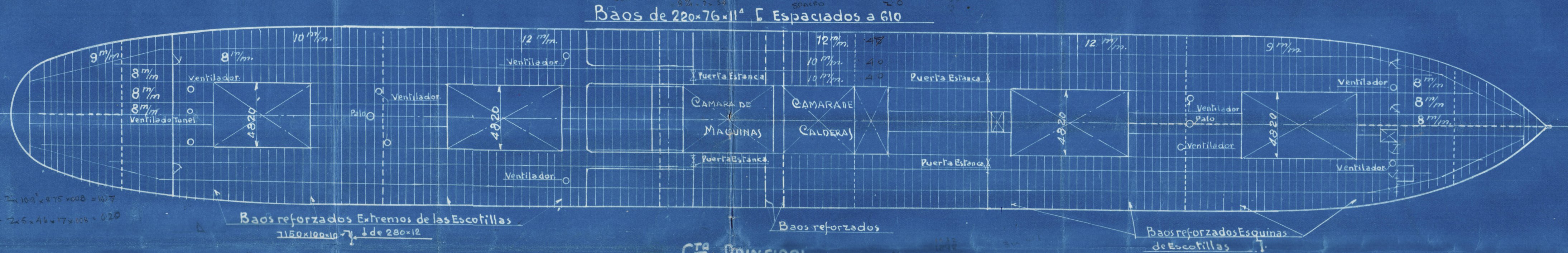
PERFIL DE PUNTALES Y ESLORA



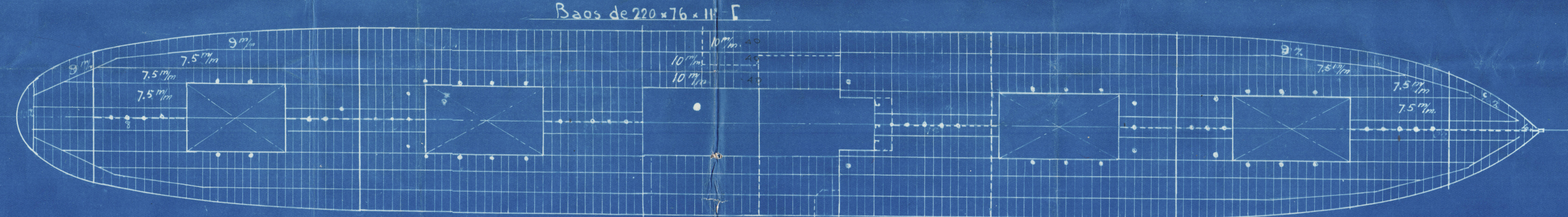
C^{ta} CIUDADELA



C^{ta} SUPERIOR



C^{ta} PRINCIPAL



DOBLE FONDO



Ernesto Beltrán S. Soler 1943
 Inspector
 The British Corporation
 Registrar of Ships

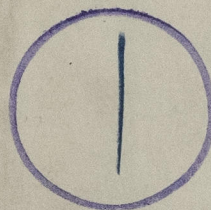
Construction

J/s RAMON ALONSO.

13 OCT 1943

01079-010188-0224

Barcelona



RECORDS DEPT.,
LONDON

31/12/48

William. 13.10.43.

J/s Ramon Alonso R. ★

Construction



© 2021

Lloyd's Register
Foundation