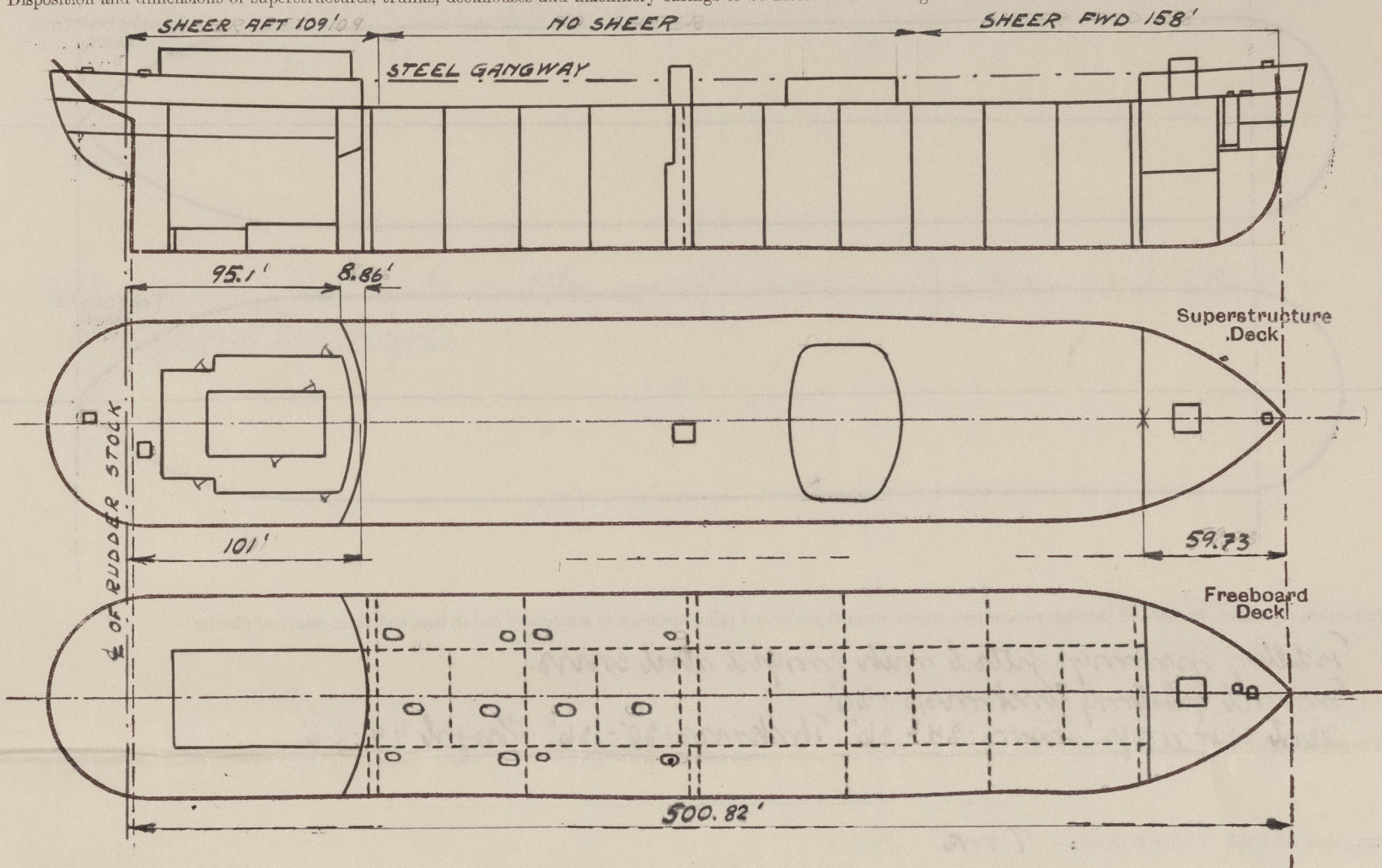


Lloyd's Register of Shipping.  
SURVEYS FOR FREEBOARD.  
(CONDITIONS OF ASSIGNMENT.)

Ship's Name *M/T "KATHRINE STENERSEN"*  
*now "SYSLA" (Kokkumms yard No. 220)* Port of Survey *Malmö.*  
Official Number \_\_\_\_\_ Surveyor's Signature *Adundén A. Barring*  
Nationality and Port of Registry *Norwegian, Oslo.* Date of Survey *Whilst building.*

Disposition and dimensions of superstructures, trunks, deckhouses and machinery casings to be inserted in the diagrams and tabular statement:—



Particulars of Superstructures, Trunks, Casings, Deckhouses.

	Coaming	Plating inches	Stiffeners inches	Spacing inches	End Attachments of Stiffeners	Size of Openings inches	Height of Sills inches	Height of Casings feet.
Poop Bulkhead ... <i>Centre boards</i>	<i>to W. to dk.</i>	<i>.50</i>	<i>9 7/8 x 3 1/2 x 56 I</i>	<i>31-32</i>	<i>skts. top &amp; bot.</i>	<i>None</i>	<i>✓</i>	<i>7.75</i>
Raised Quarter Deck Bulkhead ...	<i>" "</i>	<i>.46</i>	<i>9 7/8 x 3 1/2 x 44 I</i>	<i>32</i>	<i>to W. to dk. bot.</i>	<i>None</i>	<i>✓</i>	<i>7.75</i>
Bridge, After Bulkhead ...								
Bridge, Forward Bulkhead ...								
Forecastle Bulkhead ...	<i>to W. to dk.</i>	<i>.32</i>	<i>3 1/2 x 3 x 34 I</i>	<i>29 1/2 - 28</i>		<i>60.5 x 49 50 x 29</i>	<i>16 25</i>	<i>7.5</i>
<i>Main pump room</i>	<i>to W. to dk.</i>	<i>.32</i>	<i>3 1/2 x 2 1/2 x 32 I</i>	<i>23 1/2</i>	<i>to W. top</i>	<i>54 x 33</i>	<i>48</i>	<i>9.75</i>
Trunk, Forward ...								
Exposed Machinery Casings on Freeboard or Raised Quarter Decks ...	<i>In centre part of poop bulkhead!</i>							
Exposed Machinery Casings on Superstructure Decks ...		<i>.28-.30</i>	<i>3 x 2 x 28-40 I</i>	<i>32</i>	<i>skts. top cont. side.</i>	<i>None</i>	<i>✓</i>	<i>4.</i>
Machinery Casings within Superstructures not fitted with Class I Closing Appliances ...								
Deckhouses on <i>Pump</i> Deck Ships ...	<i>6 x 3 x 32</i>	<i>F. .32 S. .28</i>	<i>4 x 40 3 x 32</i>	<i>25-32 24</i>	<i>✓</i>	<i>61 x 25</i>	<i>18</i>	<i>7.5</i>

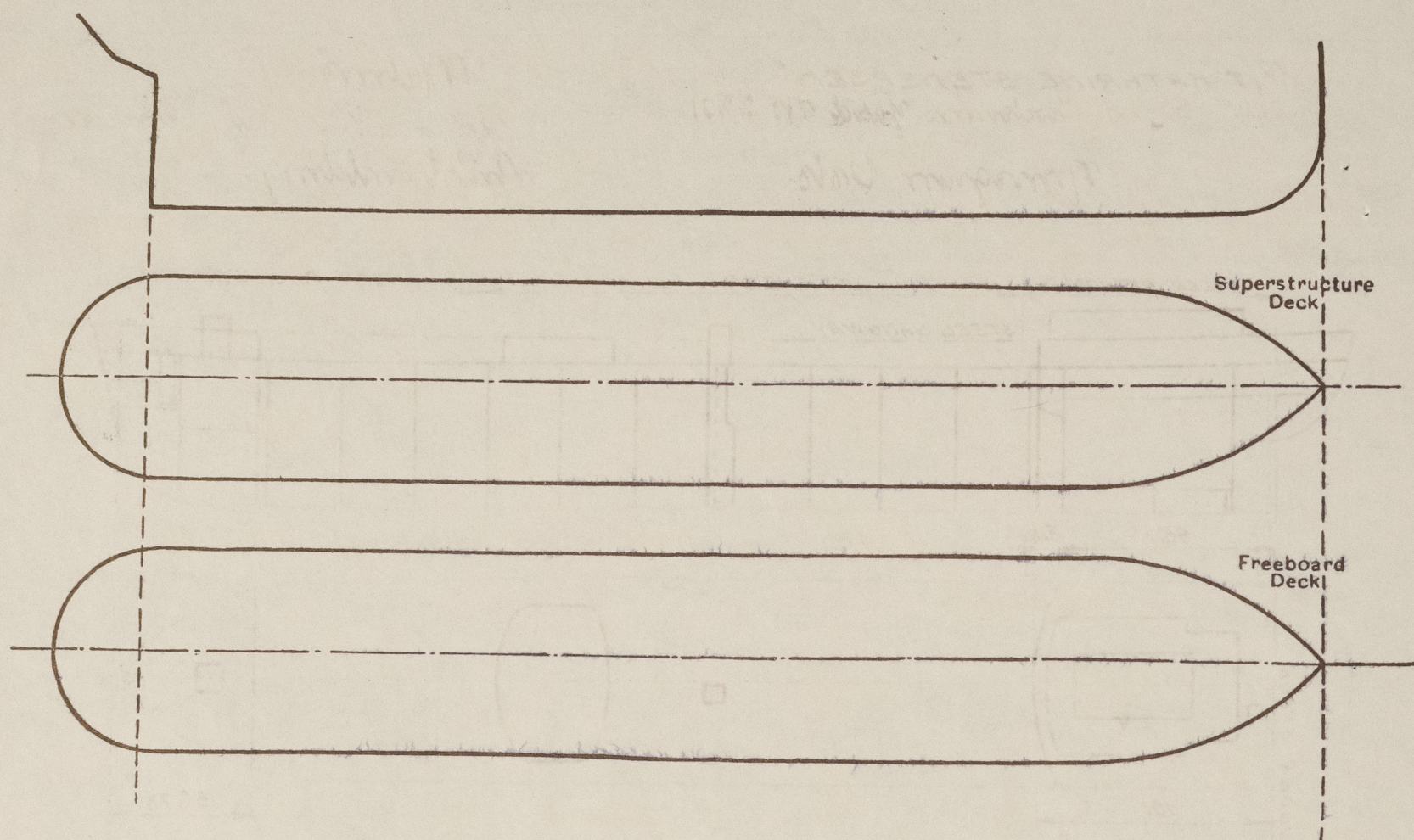
Particulars of Closing Appliances (state if capable of being manipulated from both sides).

Poop Bulkhead ...	<i>✓</i>
Raised Quarter Deck Bulkhead ...	<i>✓</i>
Bridge, After Bulkhead ...	<i>✓</i>
Bridge, Forward Bulkhead ...	<i>✓</i>
Forecastle Bulkhead ...	<i>✓</i>
Exposed Machinery Casings on Freeboard or Raised Quarter Decks ...	<i>Hinged W. I. steel door, manipulated from both sides. (Pump room). 3 1/2" stiffening boards in welded channels, full height. (In. space).</i>
Exposed Machinery Casings on Superstructure Decks ...	<i>Hinged W. I. steel door, manipulated from both sides. (Main pump room).</i>
Machinery Casings within Superstructures not fitted with Class I Closing Appliances ...	<i>✓</i>
Deckhouses on <i>Pump</i> Deck Ships ...	<i>2" thick, solid teak doors, manipulated from both sides.</i>



# PARTICULARS OF PROTECTION TO OPENINGS, ETC.

The following diagrams should be used to indicate the positions of cargo and coaling hatchways, gangway, cargo and coaling ports, ventilators, companionways, etc., which would affect the seaworthiness of the ship:—



Particulars of fiddle, funnel and ventilator coamings, engine room skylight and other openings in machinery casing tops and their means of closing:—

Fiddle openings fitted with hinged steel covers.  
 Funnel plating thickness .20"  
 Vent. coamings Diam. .24"-.36" Thickness .20"-.26" Height 4.4'-8.6'

Particulars of Flush Bunker Scuttles:— None.

Particulars of Companionways:— At sides of poop deck house:— Door openings 61" x 25". Height of sill above steel deck 18". 2" solid brake doors, manov. from both sides.

Particulars of Ventilators in exposed positions on freeboard and superstructure decks:—

Poop deck:— Diam. 6"-9" x 12". Thickness .34"-.38". Height 31"  
 Inbr. deck:— Diam. 12". Thickness .40" Height 36"  
 Inbr. deck:— Inbr. ports of strong construction.

All vent. coamings are connected to deck plating by means of electric welding and all are provided with means for closing.

Particulars of Air Pipes in exposed positions on freeboard, raised quarter, or superstructure decks:—

Poop deck:— 400mm x 30"-32" in height.  
 Inbr. deck:— " 30"-32" "  
 Inbr. deck:— " 7'-9" high (flanged).  
 All are provided with means for closing.

Particulars of Gangway Cargo and Coaling Ports:—

None.

Particulars of Scuppers and Sanitary Discharge Pipes:— No scuppers below freeboard deck.  
 Sanitary discharge pipes from poop deck house and from poop space are led overboard about 12" above 2<sup>nd</sup> deck (always accessible) and those from the bridge deck house led overboard above freeboard deck. All discharge pipes are fitted with storm valves and drain pipes from the poop space, also provided with non-detachable screw plugs at their inner ends.

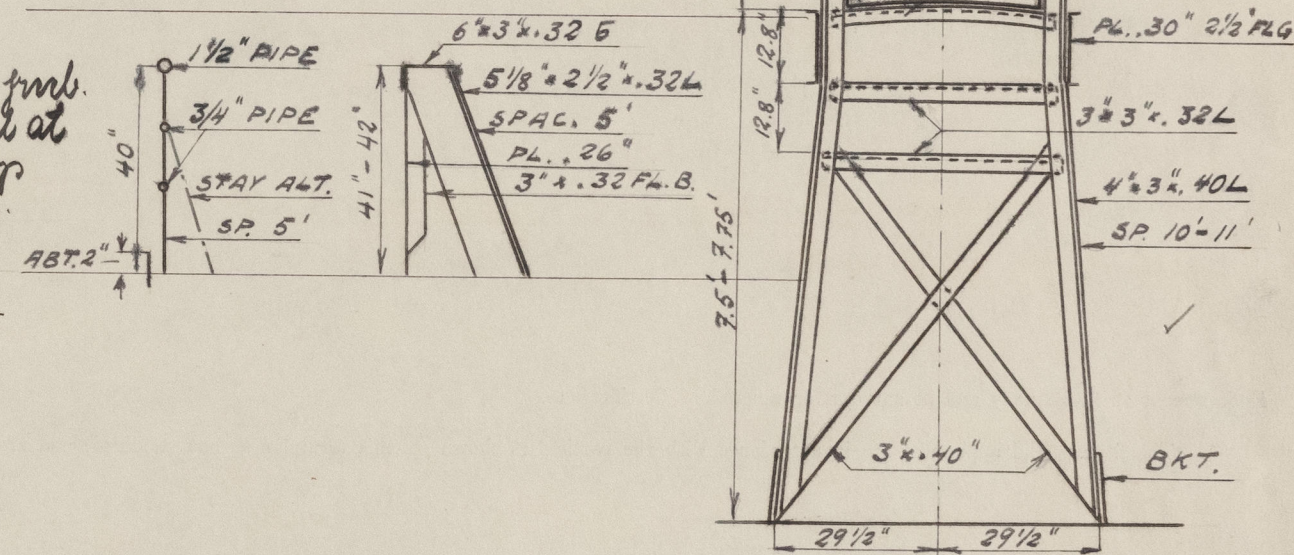
Particulars of Side Scuttles:— All side scuttles are of strong construction and fitted with hinged deadlights.

Vertical distance of Sill of lowest Side Scuttle above top of keel

About 43'.

Particulars of Guard Rails:—

Bulwark at fore part of freeboard and poop decks. Open rail at after part of freeboard and poop decks and on fore deck.



Particulars of Gangways, Lifelines, etc.:—

## Particulars of Freeing Arrangements.

	Length of Bulwark	Height of Bulwark	Size of Freeing Ports	Number each side	Area each side	Rule area each side
After Well ...	...	...	...	...	...	open rails for half length of bulwark
Forward Well and from fore 162'	...	41"-42"	3 1/2" x 19 3/4" 3 1/2" x 19 3/4" 3 1/2" x 19 3/4"	3 x 3 = 9	170'	portion of freeboard deck

State position of each freeing port ...

(F. and A. position and height above deck edge) After Well:— Forward Well:— From fore:— 45'-88'-132'. Hgt above deck edge 2'.

State whether the freeing ports are fitted with shutters, bars, or rails, and give particulars of such:—

Additional area where sheer is less than standard.



PARTICULARS OF PROTECTION TO OPENINGS, ETC.

HATCHWAYS ON FREEBOARD AND SUPERSTRUCTURE DECKS.									
		← Freeboard deck. →		← Intra. deck. →		← Poop deck. →			
Description of Hatchway ...		Cargo tanks	O.F.B. and side tanks	Coffered	Chain lock and F.P.	Cargo	Intra. space	Stowage	
Dimensions of Hatchway ...		5' x 3'-6"	2' φ	16' x 18"	3' x 2'-8"	11'-3" x 11'-2"	2'-6" x 3'-4"	4' x 2'-6"	4' x 4'
COAMINGS	Height above Deck ...	32 1/2"	9"	4' 1/2"	9"	32 1/2"	15"	6"	9"
	Thickness { Sides ...	40"	46"	44"	26"	44"	28"	38"	38"
	Stiffeners { Ends ...	40"			26"	44"	28"	38"	38"
	Brackets, Stays ...	3" x 2" x 40"				6" x 3" x 44"			
HATCH BEAMS	Number ...								
	Spacing ...								
FORE AND AFTERS	Number ...								
	Spacing ...								
HATCH COVERS	Material ...				Steel				
	Thickness ...	46"	54"	40"	26"	36"	32"	32"	32"
HATCH COVERS	How fitted	Flange I	Hinged		Hinged	7" x 3" x 40"	Hinged & stowed		
	Bearing Surface ...	3" x 2" x 40"							
Spacing of Cleats		14"-16"	17"	4"		12"-17"		17"-20"	
Number of Tarpaulins ...									
<p>*Are wood fore and afters steel shod at all bearing surfaces? <i>None.</i></p> <p>Are battens and wedges efficient and in good condition? <i>Yes.</i></p> <p>Are tarpaulins in good condition and in accordance with rule requirements? <i>Yes.</i></p> <p>Are lashings provided in accordance with rule requirements? <i>Yes.</i></p>									

Particulars of any special features:— *The vessel is longitudinally framed and all-welded.*

Endorsement at first survey and at surveys for renewal of Certificate:—

The fittings and appliances are in accordance with the particulars shown on this form (or as now modified) and are in good condition.



© 2021

Lloyd's Register Foundation