

No 708 - (Swazi)

Unreduced Section
As Built

M.N.
20/8/01

Steel Single Screw Cargo Steamer.

Midship Section

Principal Dimensions.

| | |
|-----------------------|-------|
| Length overall | 380-0 |
| Length between Perjes | 380-0 |
| Breadth, extreme | 50-0 |
| Depth moulded | 32-0 |
| Depth of hold | 29-2 |
| Depth of plater | 25-0 |

Scale 1/2 Inch = one foot

Class 100 A-1-Lloyds. 3 Deck

Equipment Numerals.

111. 374 378 379 = 421 37
Erection 5 = 2200
Numeral = 443 37

Equipment

3 hoppers 600 cwt each each steamless

1 Steamship crane - ex stock
1 Kedge crane ex stock
270 fms 2 1/2" steel cable
270 fms 2 1/2" steel cable
120 fms 4 1/2" steel cable
2 cranes each 2 1/2" steel cable
2 cranes each 2 1/2" steel cable

Lloyds Numerals.

1/2 breadth 24-6 1/2
depth 35-0 0
1/2 girth 35-0 0
111. 374
1/2 number = 104-37
Length = 378-37
2nd number = 374 90

Details to Length.

Upper deck 11-4 1/2
Main deck 16-8 1/2

Riveting

All bolts & seams to be lapped.
Upper deck stringer plate to have quadruple riveted lap joints
for 1/2" C. remainder lapped & double riveted. Upper deck plating lapped &
double riveted for 1/2" C. to single struts. Upper deck seams single
riveted throughout.
Main deck stringer plate bolts double riveted all fore & aft. Main deck plating
bolts double riveted for 1/2" C. single at ends. Main deck seams single riveted throughout.
Fore & aft stringer plate stringer & fore plate bolts double riveted fore & aft.
Forecastle deck plating seams single & bolts double riveted for 1/2" C.
Shell bolts from 1/2" to 3/4" inclusive to be double riveted all fore & aft.
Shell bolts above water line to be quadruple riveted. Upper deck sheer strake
to have quadruple riveted lap joints for 1/2" C. with treble riveted cap bolts at
ends. Steel plate to have quadruple riveted cap bolts all fore and aft.
Fore & aft stringer plate, side plating bolts lapped & double riveted, double
riveted for 1/2" C. single at ends.
Shell seams from fore to stern edge of upper deck sheer strake inclusive
double riveted all fore and aft remainder of shell seams single riveted
except fore edges of 1/2" M. strakes which are double riveted at ends of bridge.
Transverse bulkhead seams and bolts single riveted.
Double bottom plating bolts double riveted all fore and aft. Double bottom
seams, fore seams on each side nearest centre line of ship double riveted
all fore & aft, remainder double for 1/2" C. single at ends.
Margin plate bolts double riveted all fore and aft.
Centre girder bolts lapped & treble riveted all fore and aft.

Transverse Bulkheads

Plating - Upper half 1/2", lower half 3/4"
Horizontal stiffening as per profile. Vertical stiffeners
from Main to upper deck 1/2" dia. angles spaced
30" apart. Vertical stiffeners below main deck 1/2"
dia. angles spaced 30" apart. Vertical stiff
1/2" dia. angles spaced 30" apart. Vertical stiff
plates as per profile angles to double for Main
deck 1/2" x 1/2" double. Frame angles 6" x 3 1/2"
double. Vertical stiffeners have been increased in
size to compensate for wide spacing of horizontal
stiffeners.

Tank Top Plating

Single line strake 1/2" x 1/2" for 1/2" C. to 1/2"
In engine space 1/2" x 1/2" space 30". Beyond engine
and boiler space 1/2" x 1/2" space 30".
Under boiler 1/2" x 1/2" (all plating in boiler space)

The following portions of double bottom to be 1/2" thicker
in the boiler space 1/2" x 1/2" floors, reverse frames, all
vertical angles in side double bottom, intercostal plates
and fore angles, centre girder plate and fore angles
and margin plate.

Web Frames below Main Deck

Web frames continuous plate 1/2" for 1/2" C. to 1/2"
Frame plate 1/2" x 1/2" for 1/2" C. to 1/2" angle. Single face angle
6" x 3 1/2" for 1/2" C. to 1/2". Half diamond plate 1/2" x 1/2" for
1/2" C. to 1/2". Web frames spaced as per profile

Side Stringer

Stringers intercostal. Plate 1/2" x 1/2" for 1/2" C. to 1/2". Side
angle 6" x 3 1/2" for 1/2" C. to 1/2".
Shell and frame angles 1/2" x 1/2" for 1/2" C. to 1/2".
Brackets under stringer 1/2" for 1/2" C. to 1/2" (for spacing see profile).
Connecting angles 1/2" x 1/2" for 1/2" C. to 1/2"

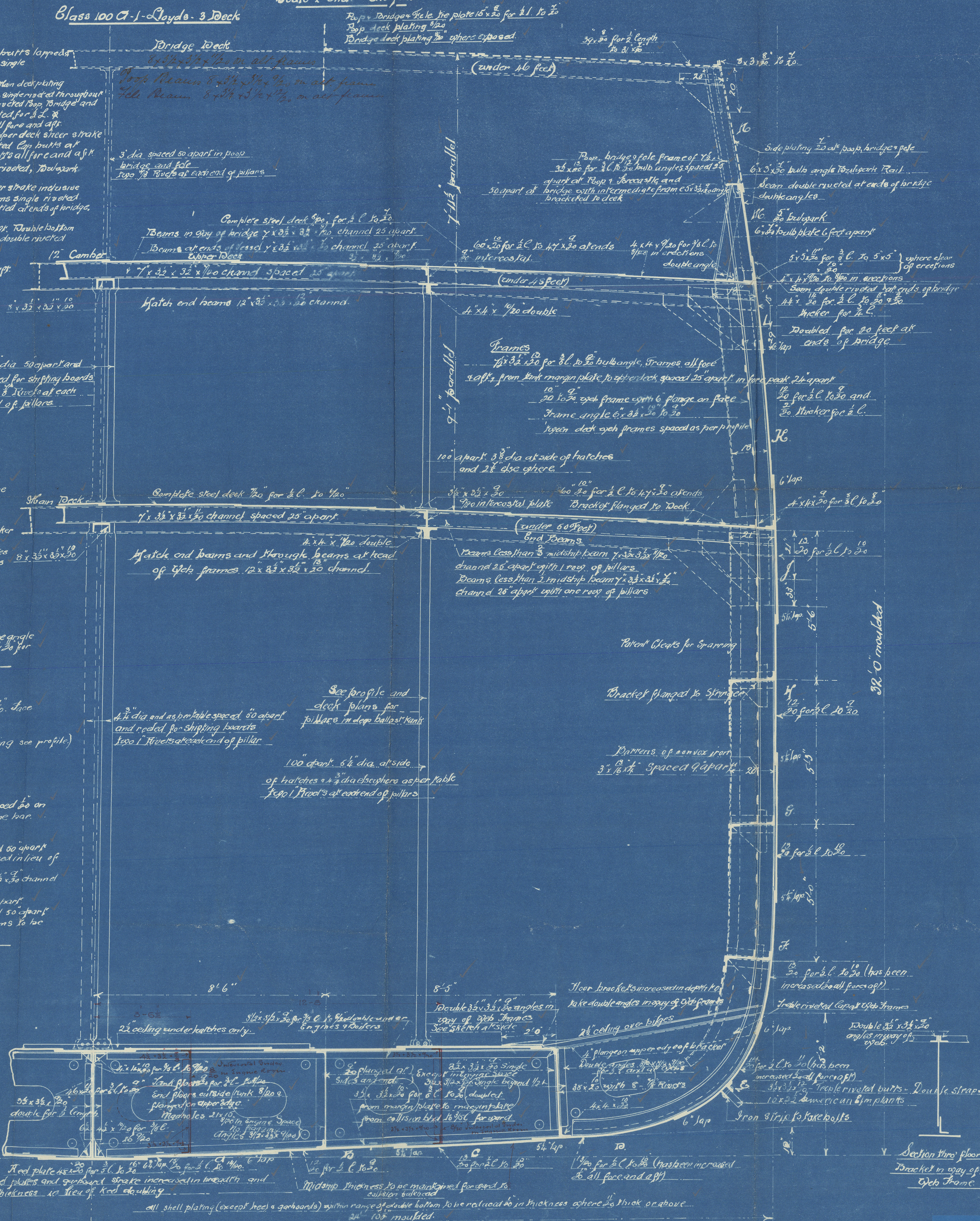
Tank side Brackets

Brackets 1/2" for 1/2" C. to 1/2". Brackets have been reduced 1/2" on
account of being lapped on 1/2" bulb angle frame bar.

Bridge deck through beams 1/2" x 1/2" channel 50" apart
Kofe Bridge deck through beams have been increased in lieu of
quarter pillars
Bridge deck beams in way of casings 1/2" x 1/2" channel
50" apart
Forecastle deck beams 1/2" x 1/2" channel 50" apart
Forecastle deck beams 1/2" x 1/2" channel 50" apart
The rivets in deck plating in the above beams to be
spaced 5 diameters apart.

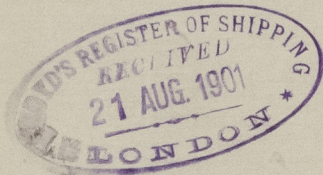
Casings etc.

Stem bar 1/2" x 1/2"
Stem post 11 x 1 1/2"
Rudder head 10 diam
Rudder pintles 5 diam



Messrs W. G. Armstrong
Whitworth & Co. Lim.
5/5 No. 408.

Midship Section
P. S. Swazi
Newcastle Report
N^o 1



010163-010170-0197



© 2021

Lloyd's Register
Foundation