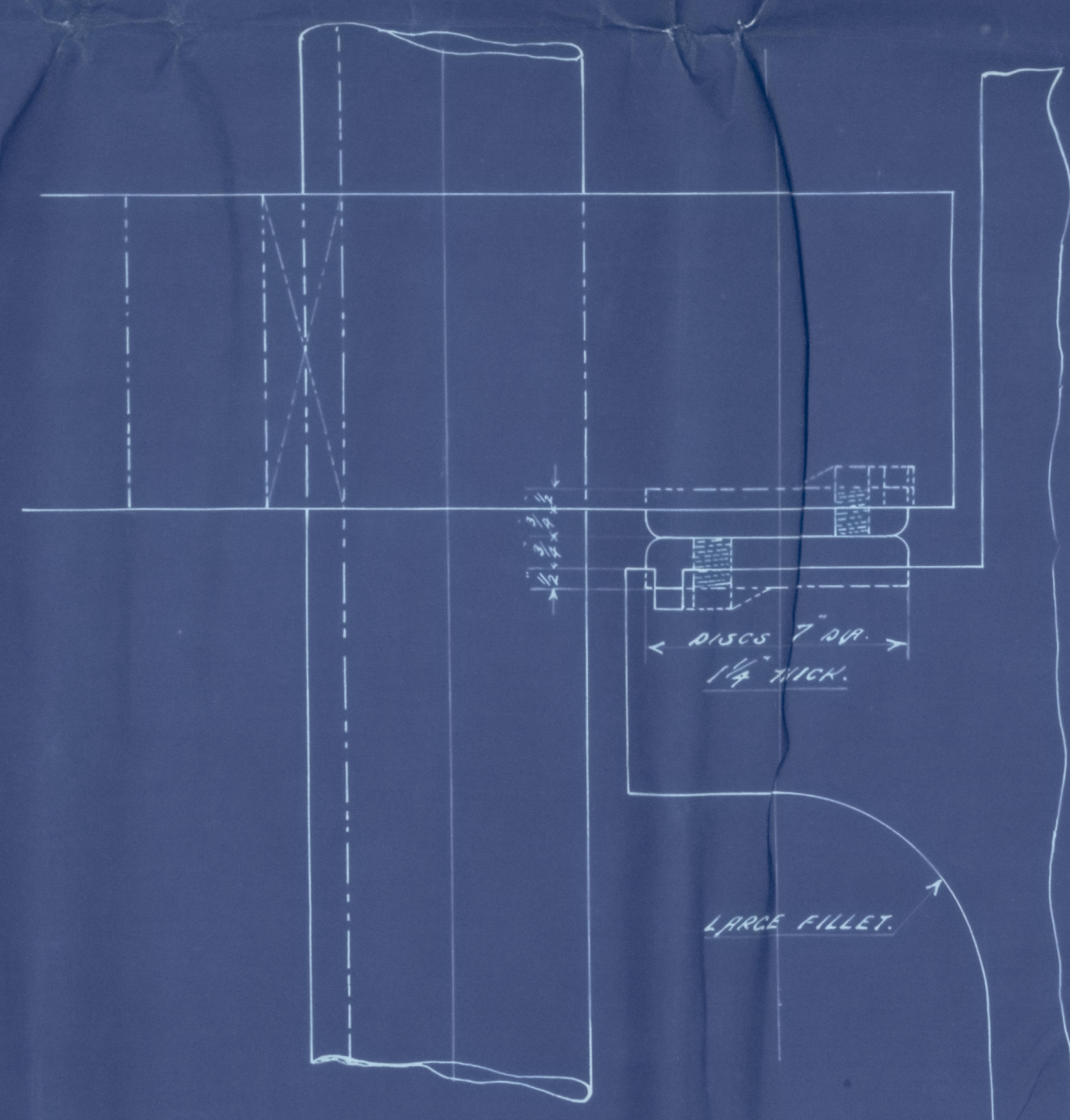
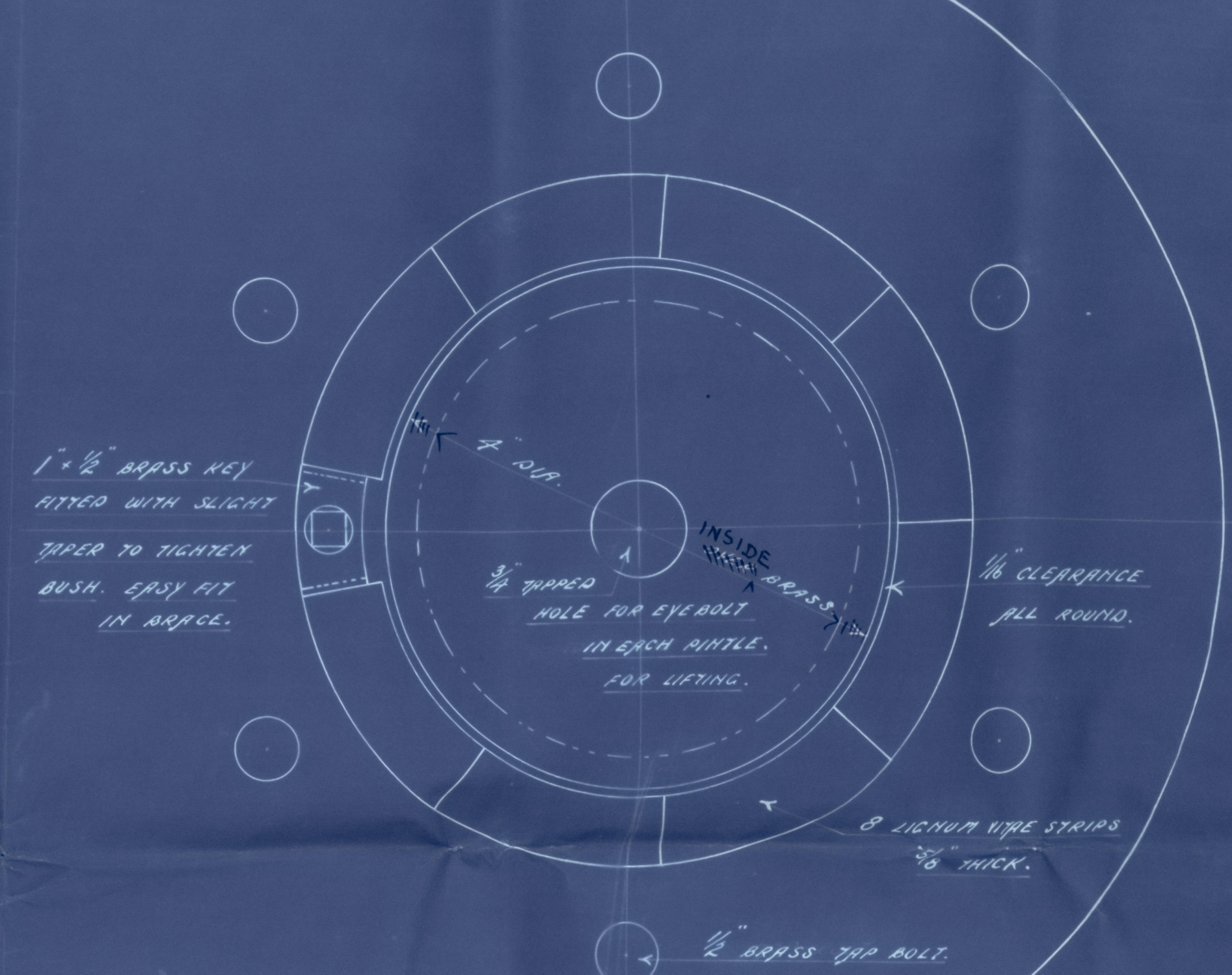
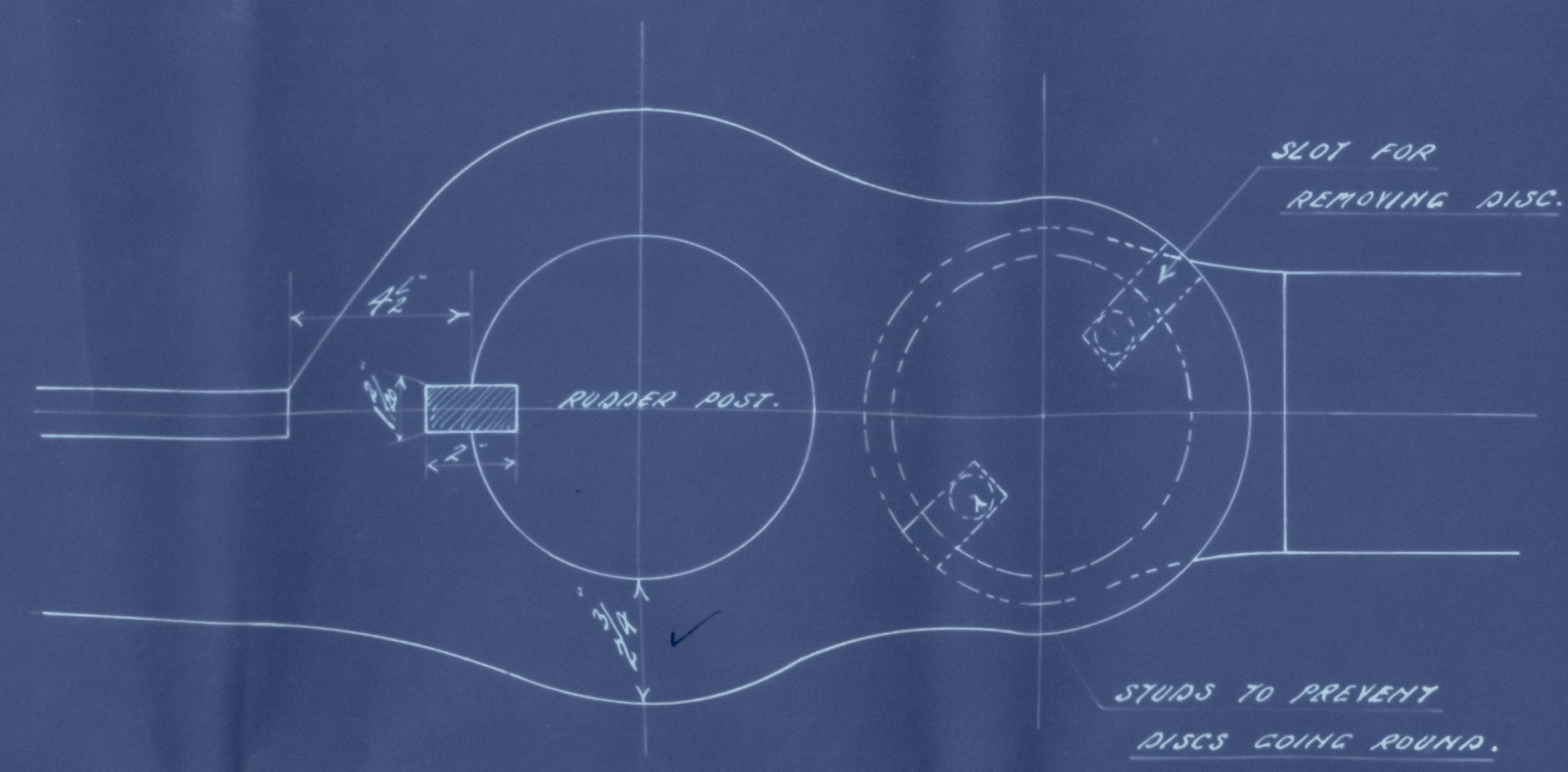


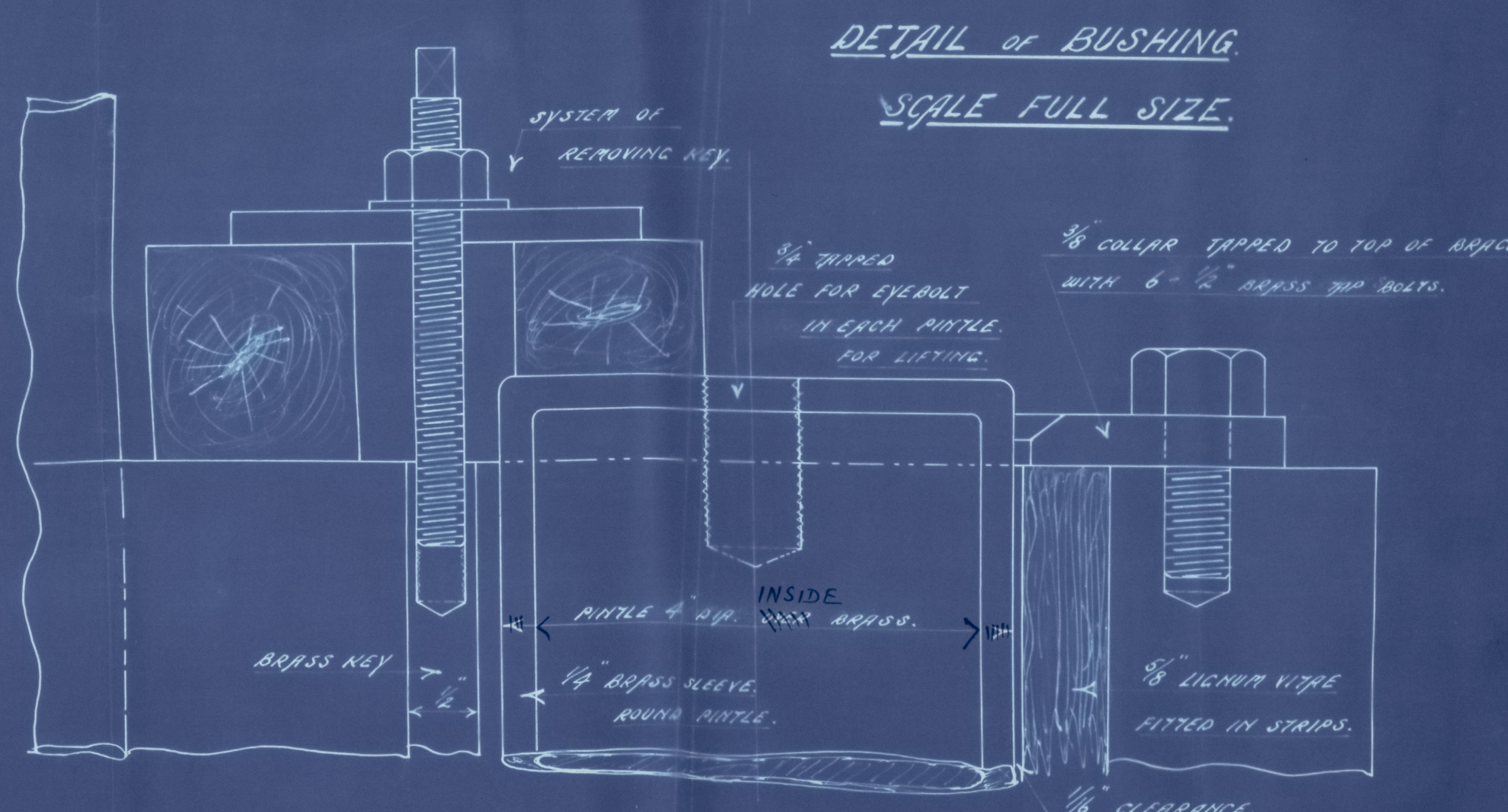
RUDDER, S.S.N. 276

SCALE 1/2" = 1 FOOT.

RUDDER TO BE FORGED OF BEST STEEL FROM STOCK TO BE TURNED WHOLE LENGTH. COUPLING TO BE TURNED & KEY FITTED. RIVIN PLATE TO BE SCOTCHED FOR RIVETS. RIVETS SHOWN ON DRAWING TO RIVIN PLATE. RIVET HOLES TO BE DRILLED IN PLATE 1/2" DIA. SPACED 5" C. TO C. FOR HYDRAULIC RIVETING. RIVETS NOT TO BE CONTRASTED. ALL TO PASS POST-TESTING SURVEYORS INSPECTION.

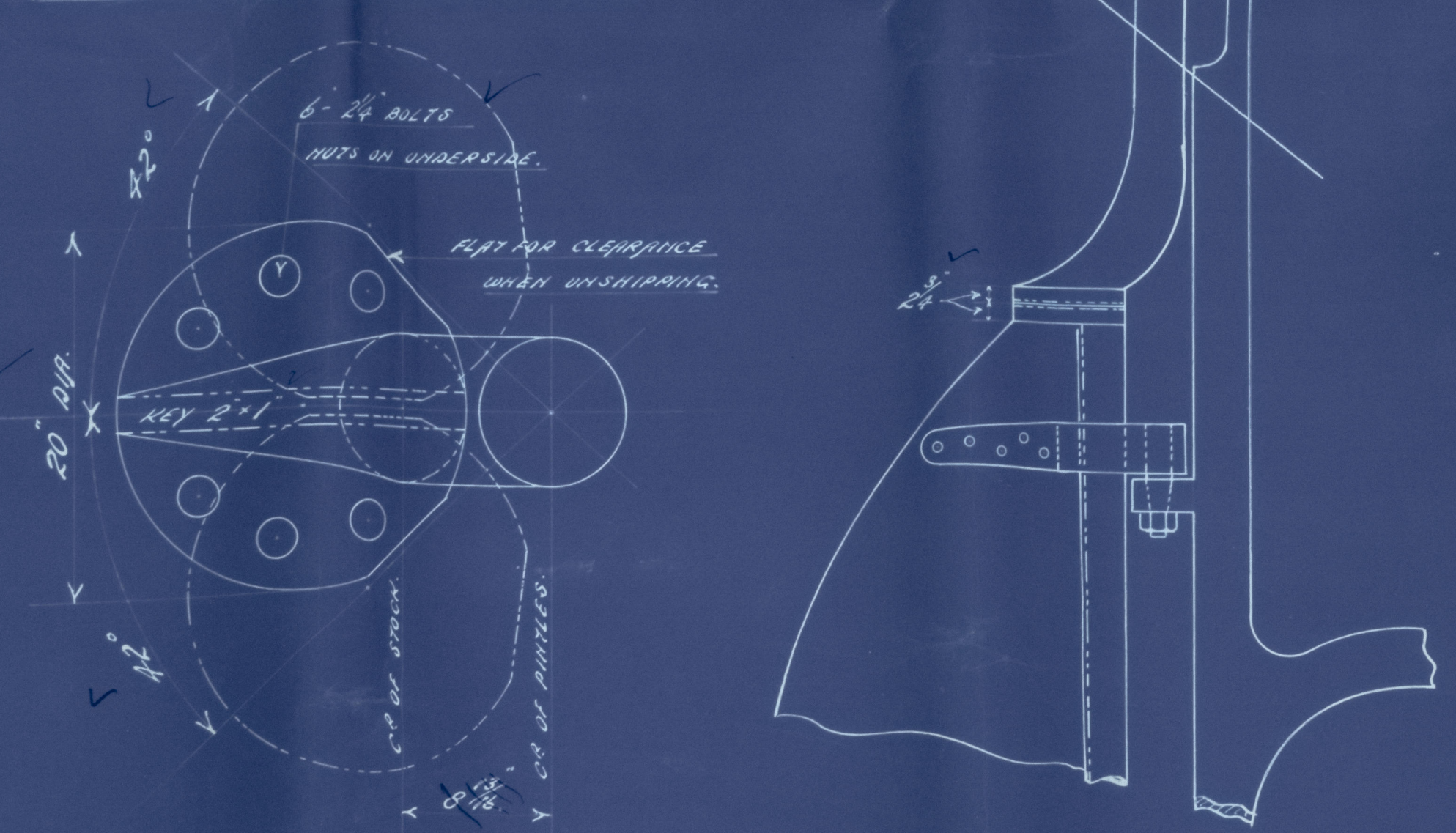


DETAIL OF STEEL BEARING DISCS
 SCALE 3/4" = 1 FOOT.
 ON GUDGEON MARKED 'A'

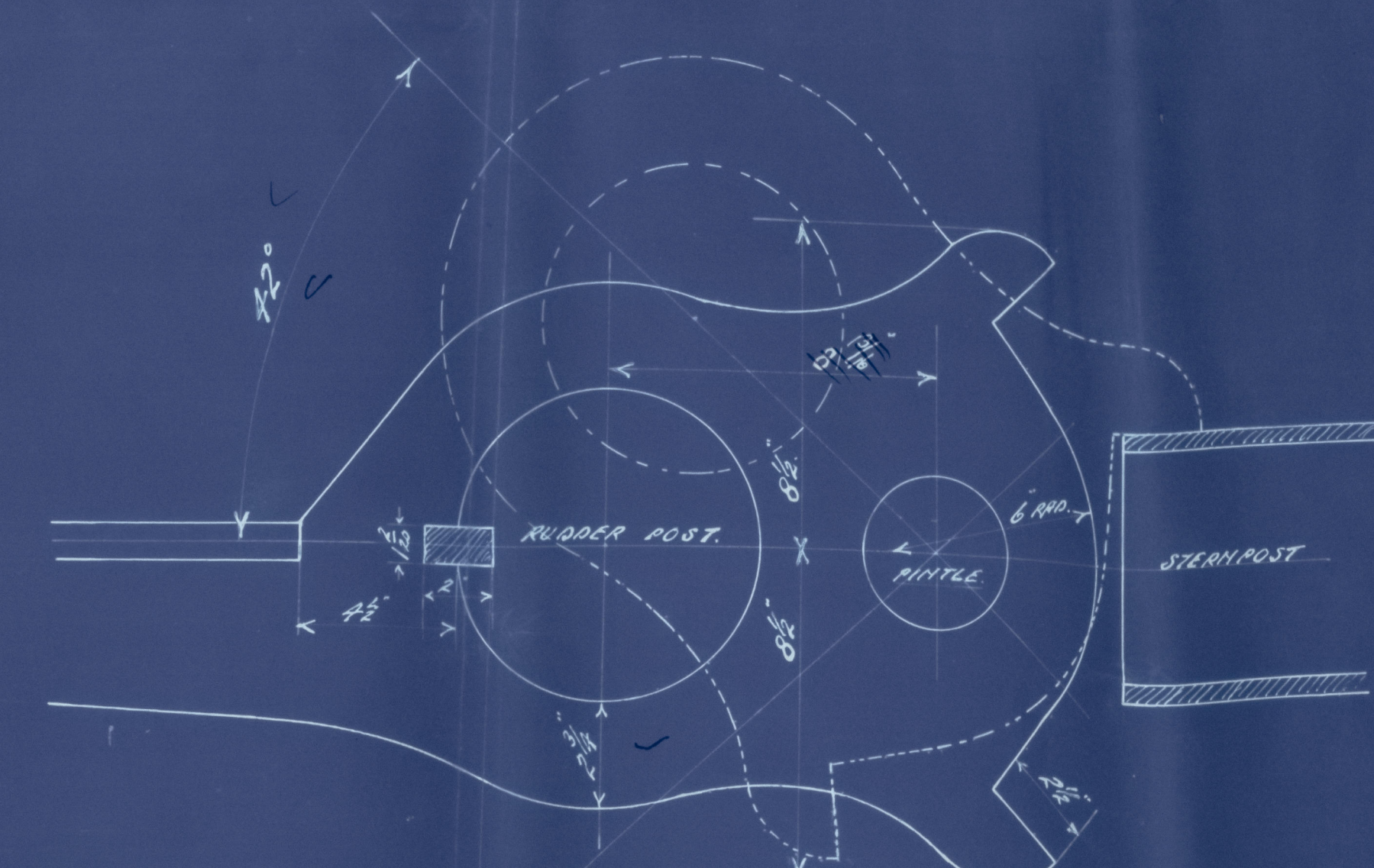


DETAIL OF BUSHING
 SCALE FULL SIZE.

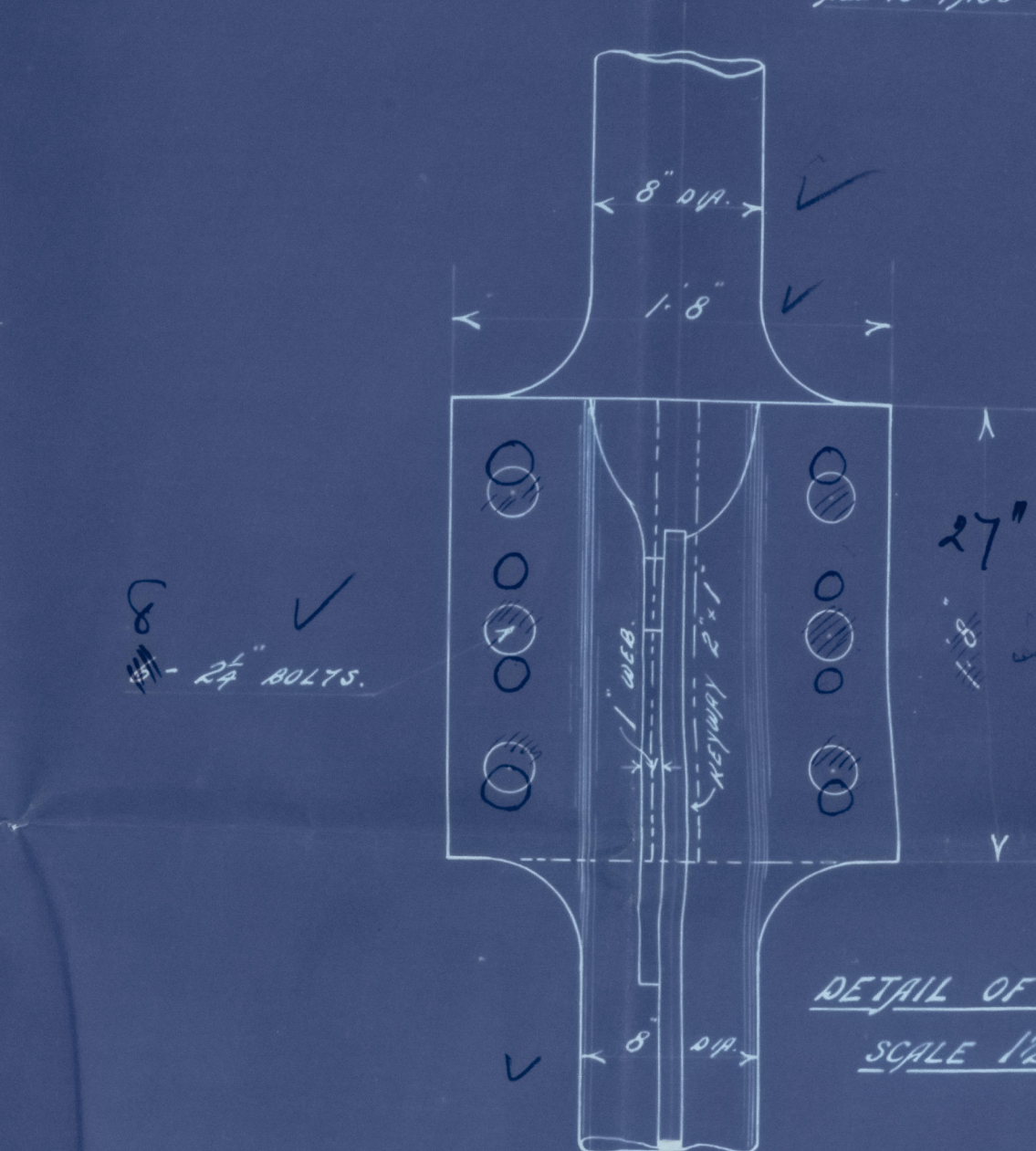
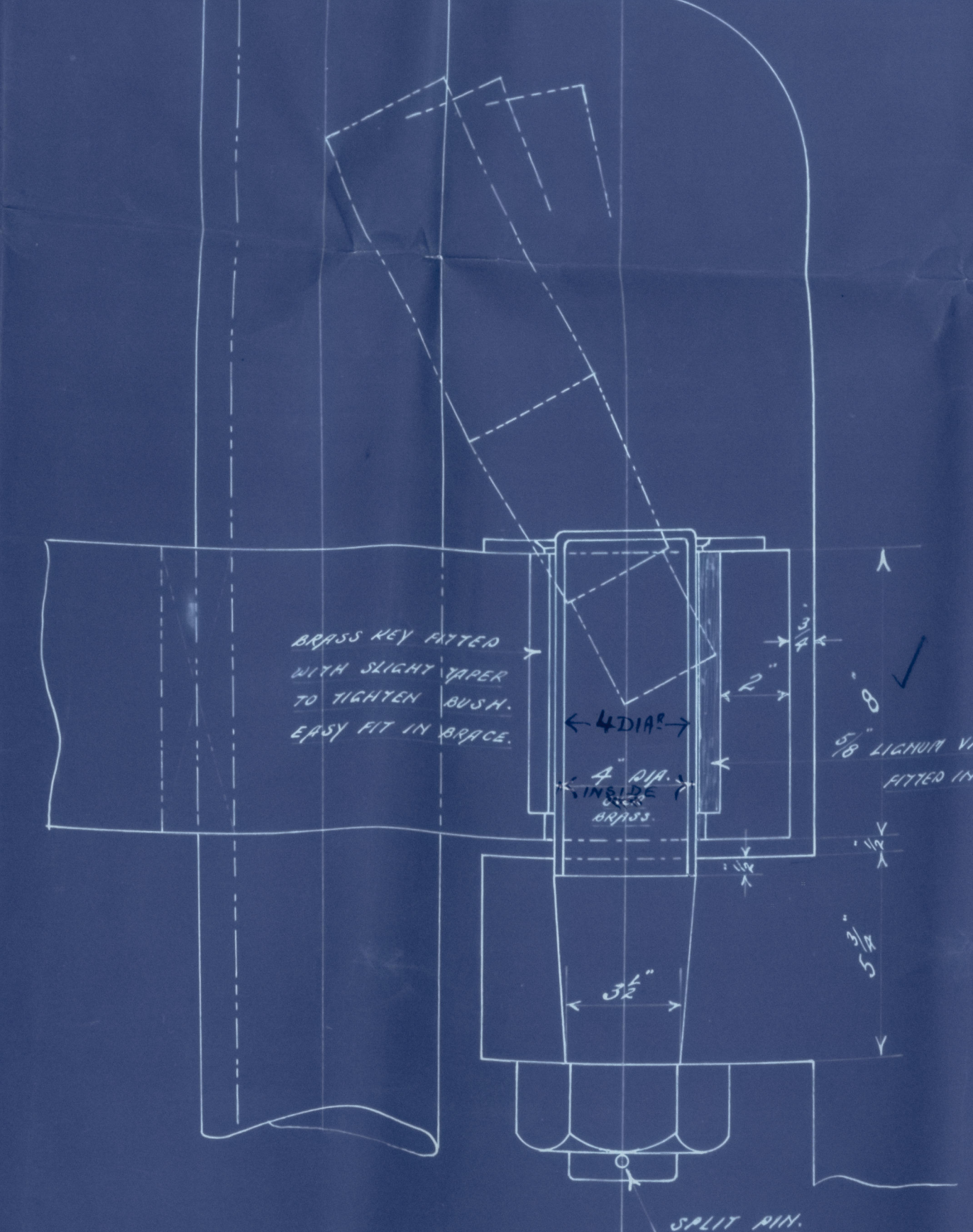
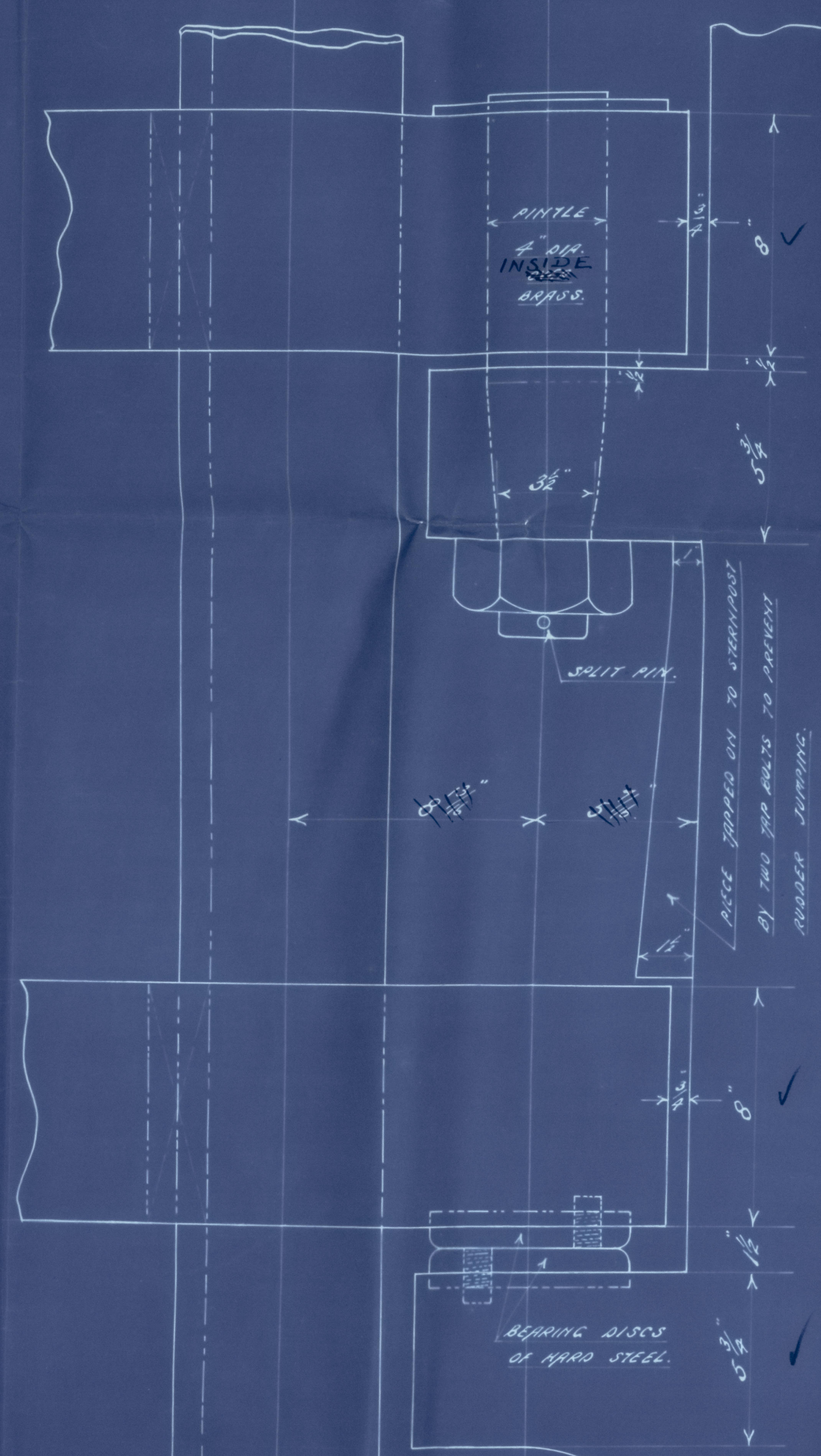
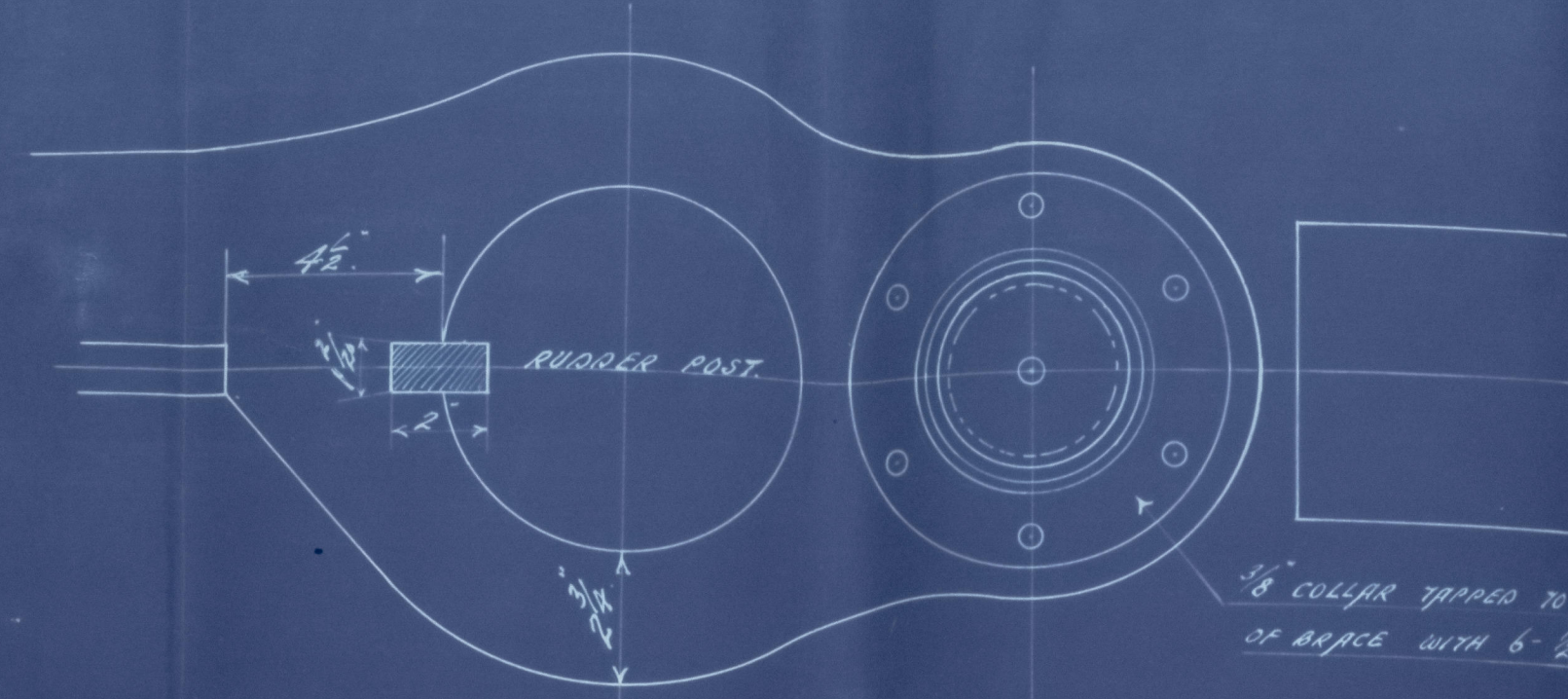
PLAN OF COUPLING.
 SCALE 1/2" = 1 FOOT.
 RUDDER TO UNIFORM WITH COUPLING. RIVIN PLATE USED FOR RIVIN IN A HORIZONTAL PLACEMENT LINE.



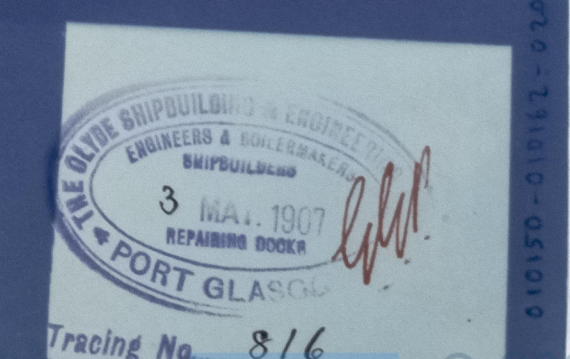
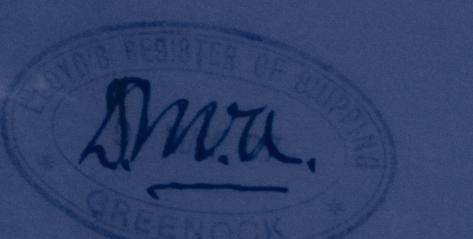
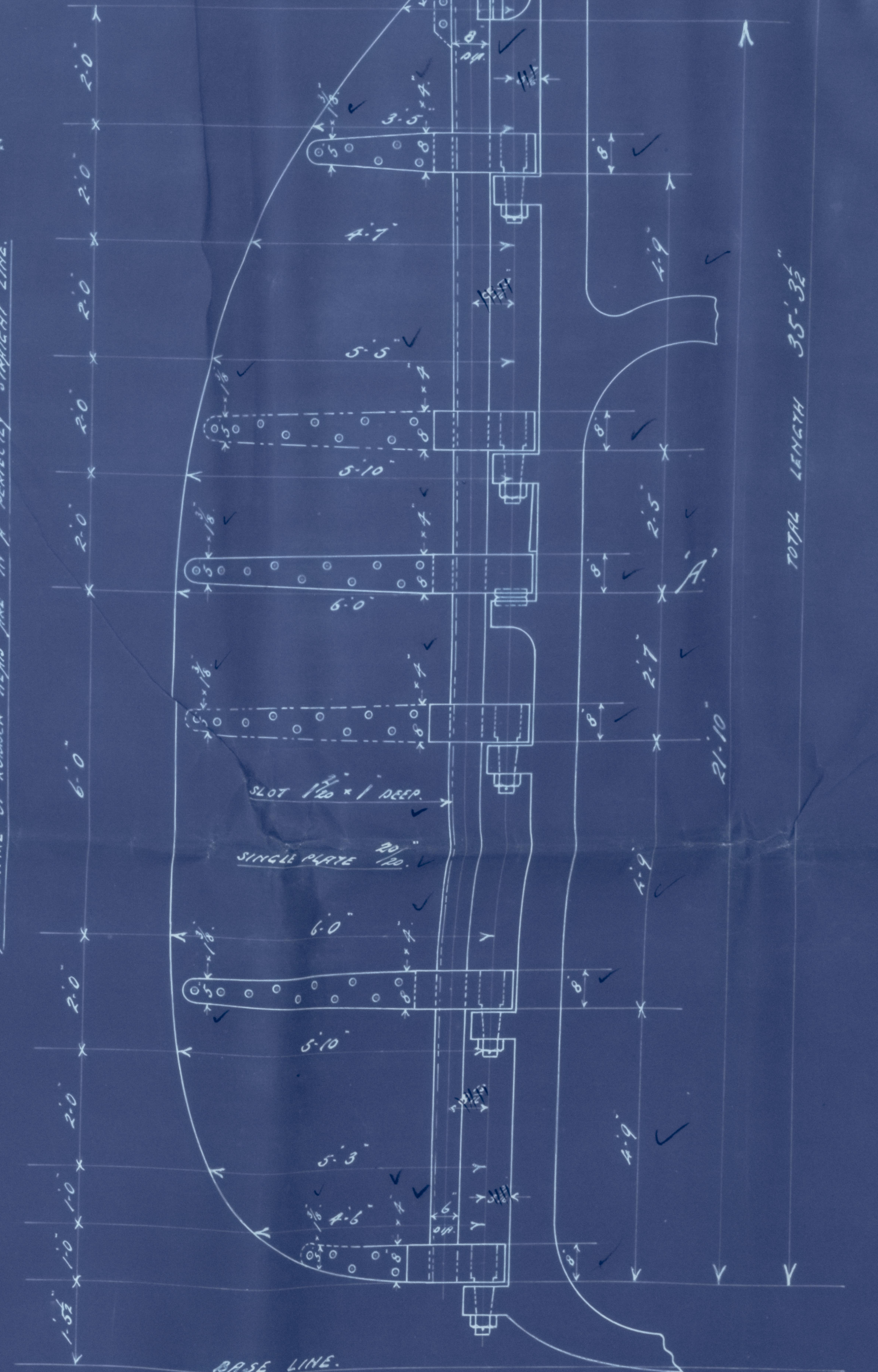
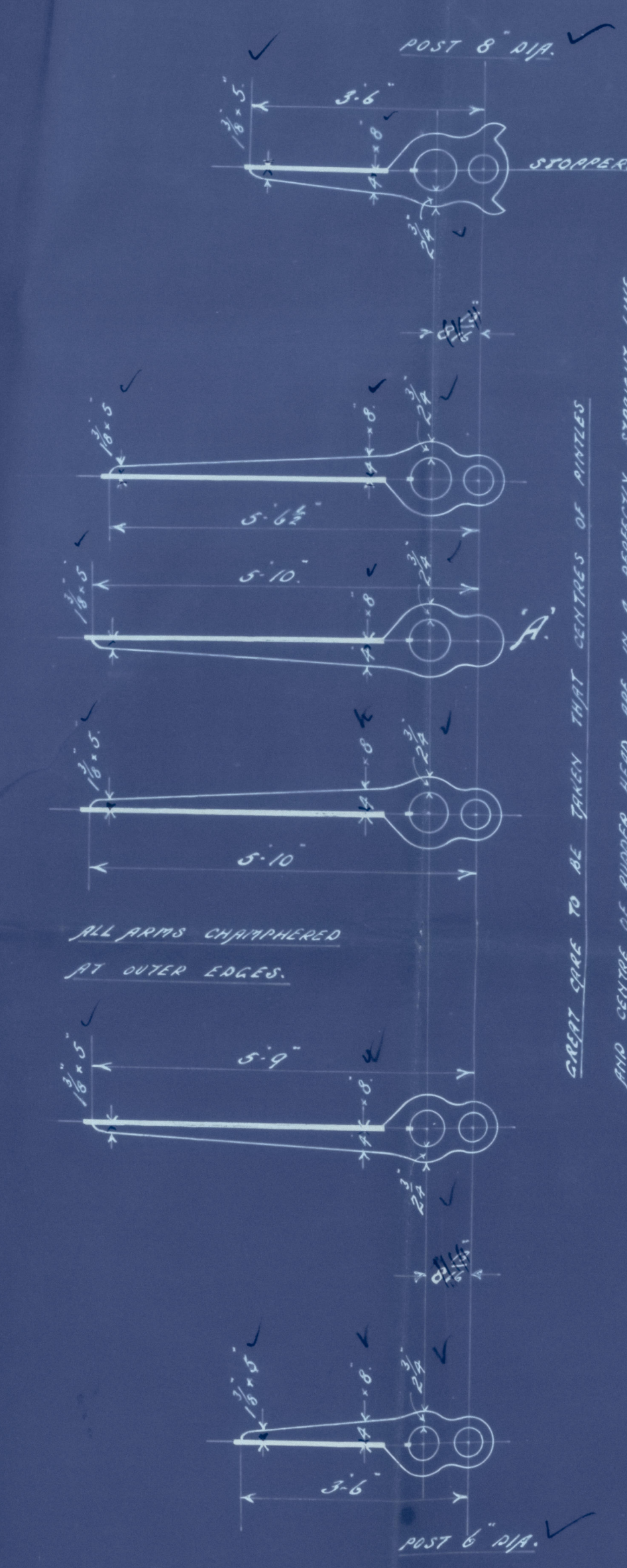
ALTERNATIVE ARRANGEMENT OF COUPLING.



DETAIL OF STOPPER ON TOP ARM.
 SCALE 3/4" = 1 FOOT.



DETAIL OF COUPLING
 SCALE 1/2" = 1 FOOT.

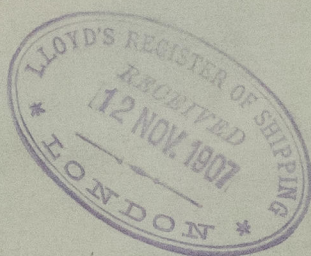


Tracing No. 816

Rudder Plan
Clyde SB Eng Co.
No 246

S. H. Hooyong
Greenock rpt No 15251

for "Patt Dar"



010150-010162-0205



Lloyd's Register
Foundation