

Lloyd's Register of Shipping.

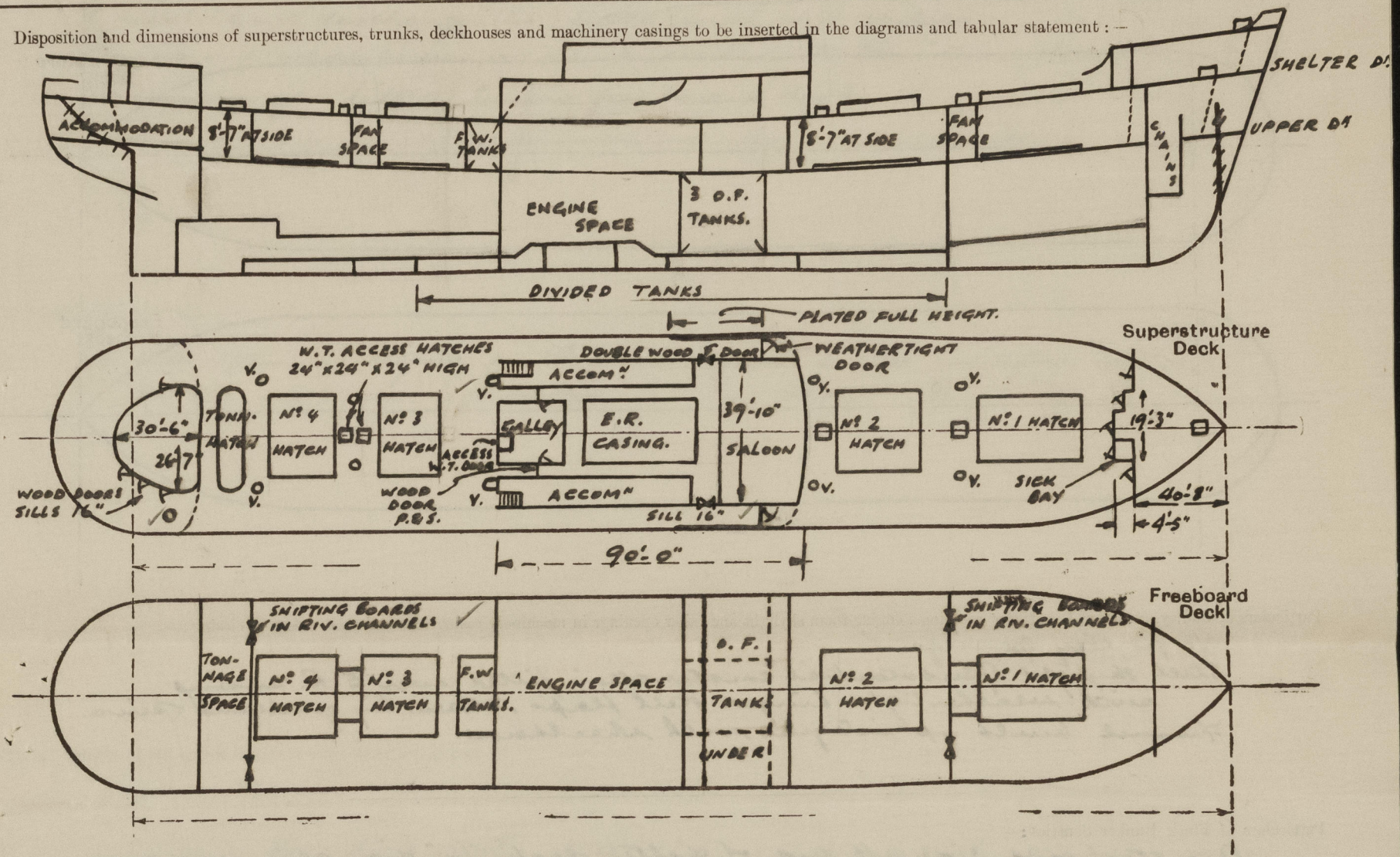
SURVEYS FOR FREEBOARD.

(CONDITIONS OF ASSIGNMENT.)

20 SEP 1945

Ship's Name "EMPIRE FORTH" (ex German MARS) Port of Survey Hull.
Official Number 180662 Surveyor's Signature J. Beachy
Nationality and Port of Registry British - London Date of Survey 18.9.45

Disposition and dimensions of superstructures, trunks, deckhouses and machinery casings to be inserted in the diagrams and tabular statement:—



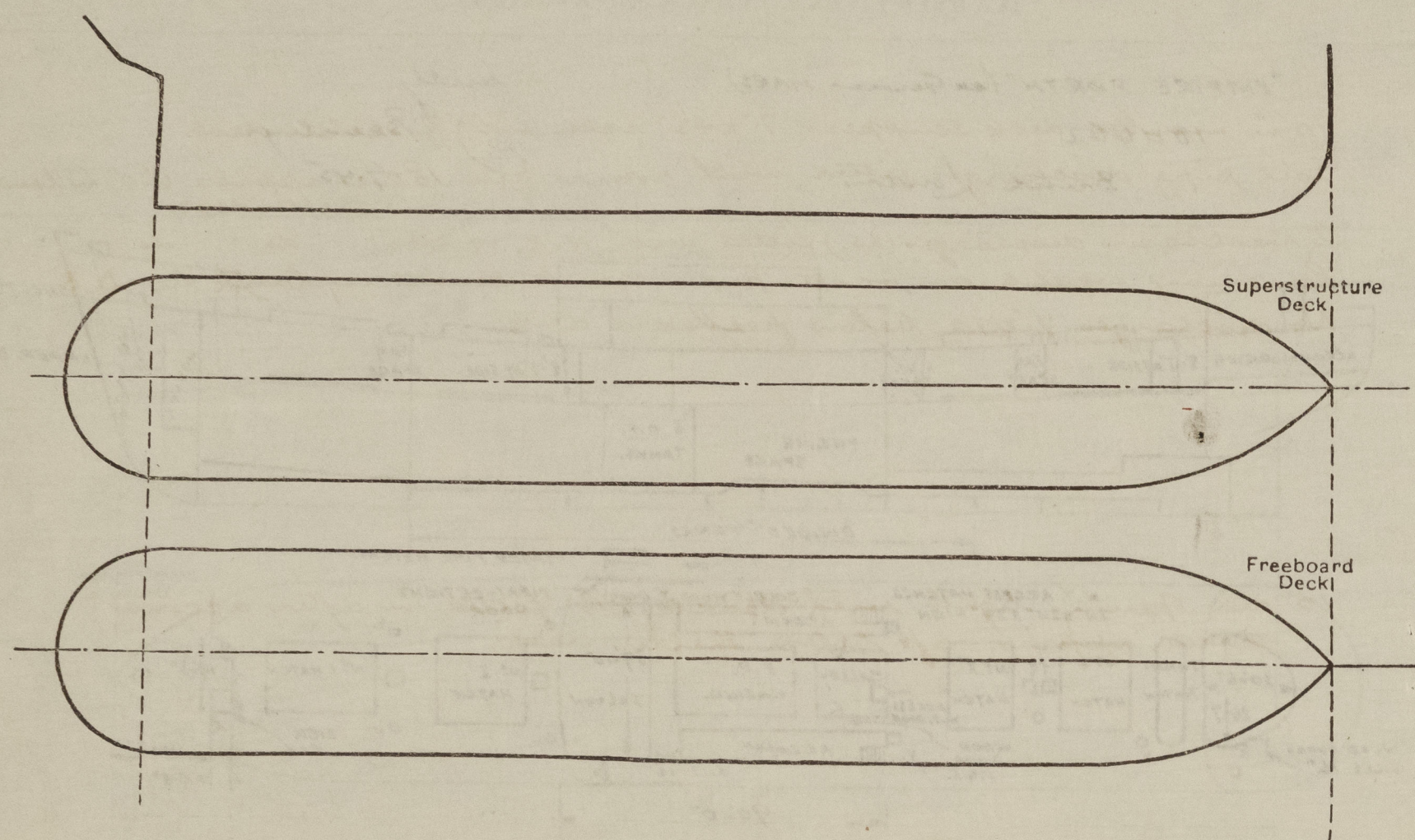
Particulars of Superstructures, Trunks, Casings, Deckhouses.

	Coaming	Plating	Stiffeners	Spacing	End Attachments of Stiffeners	Size of Openings	Height of Sills	Height of Casings
Poop Bulkhead	✓	3/8"	3 1/2" x 2 1/2" x 5/16"	33"	None.	4 @ 5'-0" x 23 1/2" 1 @ 5'-0" x 28"	18"	7'-8 1/2"
Raised Quarter Deck Bulkhead								
Bridge, After Bulkhead								
Bridge, Forward Bulkhead								
Forecastle Bulkhead	✓	3/8"	3 1/2" x 2 1/2" x 5/16"	33"	None.	4 @ 5'-0" x 23 1/2" 1 @ 5'-0" x 28"	18"	7'-8 1/2"
Trunk, Aft	✓	3/16"	4" x 2 1/2" x 5/16"	30"	None.	5'-0" x 23 1/2"	16"	7'-8 1/2"
Trunk, Forward								
Exposed Machinery Casings on Freeboard or Raised Quarter Decks								
Exposed Machinery Casings on Superstructure Decks								
Machinery Casings within Superstructures not fitted with Class I Closing Appliances	✓	3/16"	4" x 2 1/2" x 5/16"	30"	None.	5'-0" x 23 1/2"	16"	7'-8 1/2"
Deckhouses on Flush Deck Ships	✓	3/16"	4" x 2 1/2" x 5/16"	30"	None.	5'-0" x 23 1/2"	16"	7'-8 1/2"

Particulars of Closing Appliances (state if capable of being manipulated from both sides).

Poop Bulkhead	✓	4 - weatherlight steel doors, operated from both sides 1 - wood door to sick bay,
Raised Quarter Deck Bulkhead		
Bridge, After Bulkhead		
Bridge, Forward Bulkhead		
Forecastle Bulkhead	✓	Substantial wood doors, operated from both sides.
Exposed Machinery Casings on Freeboard or Raised Quarter Decks		
Exposed Machinery Casings on Superstructure Decks		
Machinery Casings within Superstructures not fitted with Class I Closing Appliances		
Deckhouses on Flush Deck Ships	✓	Substantial wood doors, operated from both sides.

The following diagrams should be used to indicate the positions of cargo and coaling hatchways, gangway, cargo and coaling ports, ventilators, companionways, etc., which would affect the seaworthiness of the ship:—



Particulars of fiddley, funnel and ventilator coamings, engine room skylight and other openings in machinery casing tops and their means of closing:—

No fiddle openings.

Steel skylight of substantial construction fitted over E. R. casing
with weather tight hinged steel flaps, closed by quadrant pins.
Funnel built up integral with wheelhouse.

Particulars of Flush Bunker Scuttles :—

One starboard side aft end of shelter deck, 16" dia, clamped cover fitted with keep chain.

Particulars of Companionways :—

One to accommodation below shelter deck aft, enclosed by after deckhouse.

Particulars of Ventilators in exposed positions on freeboard and superstructure decks :—

On Forecasts - Cowl vent 9" dia x 29" casing to store, &
 " " 26" " x 6'-2" " to hold, p.v.s.
 French " 9" " x 30" " to store, p.v.s.

On Shelter dk. 9-32" dia vents & holds forming sampson posts
+ supported by mast table + bridge front.
2-32" dia cowl vents x 36" coaming to hold aft.

Efficient means of doing provided

Particulars of Air Pipes in exposed positions on freeboard, raised quarter, or superstructure decks:—

*Forecastle - one to fore peak tank - 19" high to opening.
Shelter deck - 24 to O.B. tanks - 36" high to opening; protected by steel bulwark
- one to after peak tank - 36" " " " "
All air pipes fitted with wood plugs. ✓*

Particulars of Gangway Cargo and Coaling Ports:—

None.

Particulars of Scuppers and Sanitary Discharge Pipes :—

10 in number deck scuppers 7" x 4½" each side of shelter deck.
 Soil pipe discharges fitted with non-return valves approx 6'-0" below
 shelter deck. ✓
 2 washbasin discharges (S.S.) fitted with N.R. valves. do. X do.
 Remaining washbasin waste pipes led to sanitary tank in D.B.
 No discharges fitted below freeboard deck. ✓

Particulars of Side Scuttles :—

10" dia opening lights with deadlights fitted in after accom.
spaces, approx. 3 ft below shelter deck.

Vertical distance of Sill of lowest Side Scuttle above top of keel

Particulars of Guard Rails:— On prescastle 3'-9" high, having $\frac{1}{2}$ " dia tubular rail at top and 2- $\frac{3}{4}$ " dia lower rails.

Particulars of Gangways, Lifelines, etc. :—

None

Particulars of Freeing Arrangements.						
	Length of Bulwark	Height of Bulwark	Size of Freeing Ports	Number each side	Area each side	Rule area each side
After Well ...	} <i>All free + aft abaft forecastle.</i>	4'-2"	23" x 18"	13	37.45	22.97
Forward Well						

State position of each freeing port { After Well :— } *11" above deck*
(F. and A. position and height above deck edge) { Forward Well :— } *See sketch for f.w. position*

State whether the freeing ports are fitted with shutters, bars, or rails, and give particulars of such:— *Shutter hinged at $\frac{2}{3}$ height.*

Additional area where sheer is less than standard.

PARTICULARS OF PROTECTION TO OPENINGS, ETC.

HATCHWAYS ON FREEBOARD AND SUPERSTRUCTURE DECKS.										
SHELTER DECK					UPPER DECK					FO'CSLE DECK
Description of Hatchway	N° 1	N° 2	N° 3	N° 4	TONNAGE HATCH.	N° 1	N° 2	N° 3	N° 4	BOSUN'S STORE.
Dimensions of Hatchway	20'-0" x 13'-1"	34'-4" x 16'-5"	20'-0" x 16'-10"	33'-3" x 16'-10"	4'-0" x 16'-10"	20'-0" x 13'-1"	36'-6" x 16'-5"	20'-0" x 16'-10"	36'-8" x 16'-10"	2'-6" x 3'-2"
COAMINGS	<div> <div> Height above Deck ... 36"</div> <div> Thickness { Sides ... 7/16"</div> <div> Ends ... 7/16"</div> </div> <div> Stiffeners ... 9" x 3 1/2" B.A.</div> <div> Brackets, Stays ... 9" FL. PLATE</div>									

Particulars of any special features:—

N° 2, 3, 4 & 5 O.B. Tanks sub-divided at middle line.
 Oil fuel bunkers amidships divided into three abreast.
 Deck sockets and clamps for uprights fitted, 10 ft apart.
 Eyeplate for lashings fitted on deck, 10 ft apart.
 Strong steel bulwarks provided, adequately supported.
 Emergency steering gear - handwheel at rudder head.

Endorsement at first survey and at surveys for renewal of Certificate:—

The fittings and appliances are in accordance with the particulars shown on this form (or as now modified) and are in good condition.



© 2021

Lloyd's Register Foundation