

5 FEB 1951

42698

Index No. \_\_\_\_\_  
(For London Office only.)

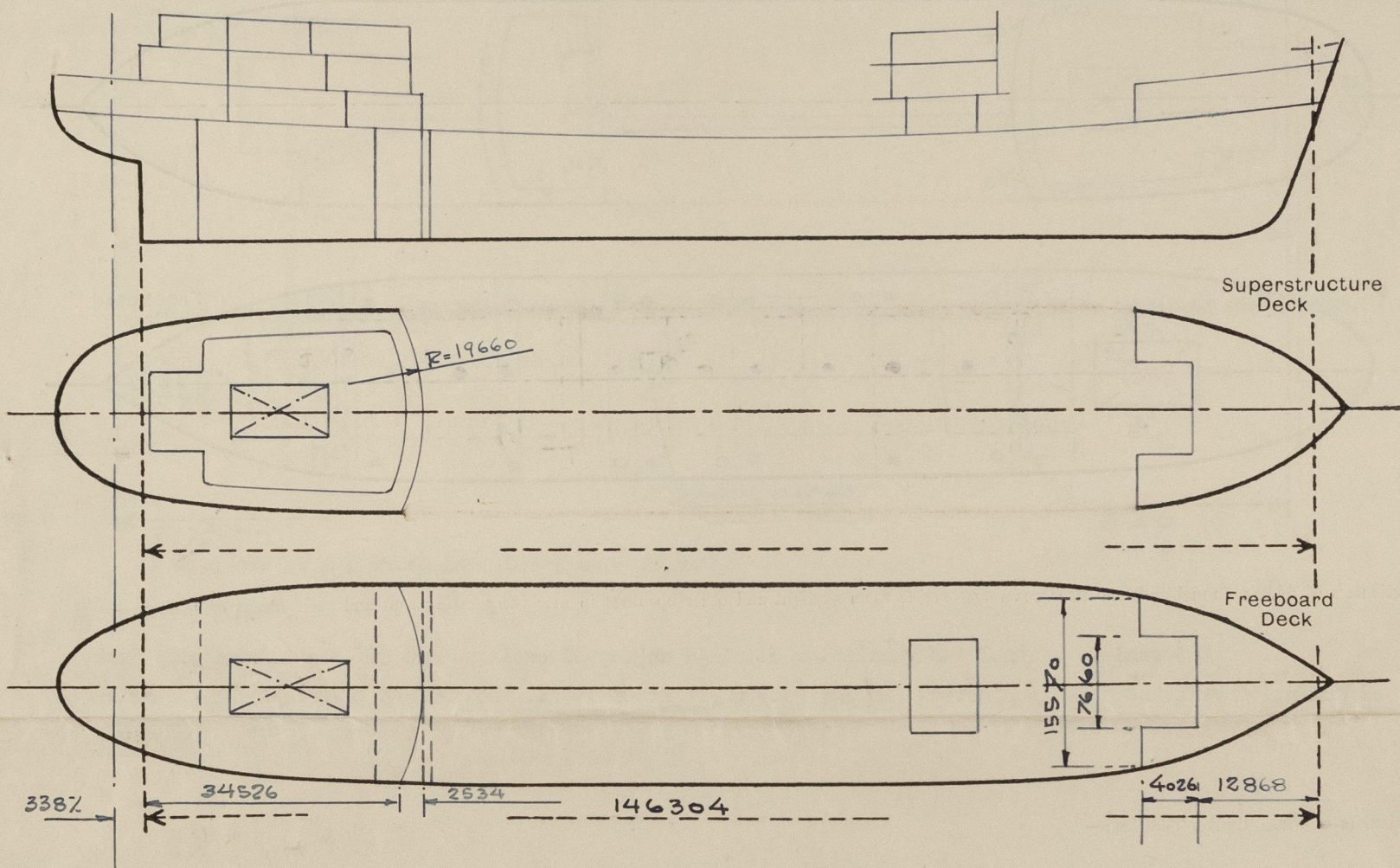
# Lloyd's Register of Shipping.

## SURVEYS FOR FREEBOARD.

### (CONDITIONS OF ASSIGNMENT.)

Ship's Name ISLAS ORCADAS Port of Survey Uddevalla  
 Official Number ----- Surveyor's Signature Hannuclun  
 Nationality and Port of Registry Argentine, Buenos Aires. Date of Survey During construction

Disposition and dimensions of superstructures, trunks, deckhouses and machinery casings to be inserted in the diagrams and tabular statement :—



Particulars of Superstructures, Trunks, Casings, Deckhouses.

	Coaming	Plating MM.	Stiffeners MM. 229 x 102 x 13	Spacing MM. 736/766	End Attachments of Stiffeners Welded top and bottom	Size of Openings MM. 1430 x 630	Height of Sills MM. 610	Height of Casings MM. 2440
Poop Bulkhead ... ..	---	11.0	229 x 102 x 13	736/766	Welded top and bottom	1430 x 630	610	2440
Raised Quarter Deck Bulkhead ...								
Bridge, After Bulkhead ... ..								
Bridge, Forward Bulkhead ... ..								
Forecastle Bulkhead ... ..	---	7.5	100 x 76 x 8	736/840	Welded top and bottom	2 á 1430x610 2 á 1525x920	600	2440
Trunk, Aft ... ..								
Trunk, Forward ... ..								
Exposed Machinery Casings on Free- board or Raised Quarter Decks ...	None							
Exposed Machinery Casings on Super- structure Decks ... ..	None							
Machinery Casings within Superstruc- tures not fitted with Class I Closing Appliances ... ..								
Pump Room Entrance House Deckhouse on Flash Deck ...	---	11.0	127 x 89 x 9.5	575/675	None	1420 x 620	610	3500

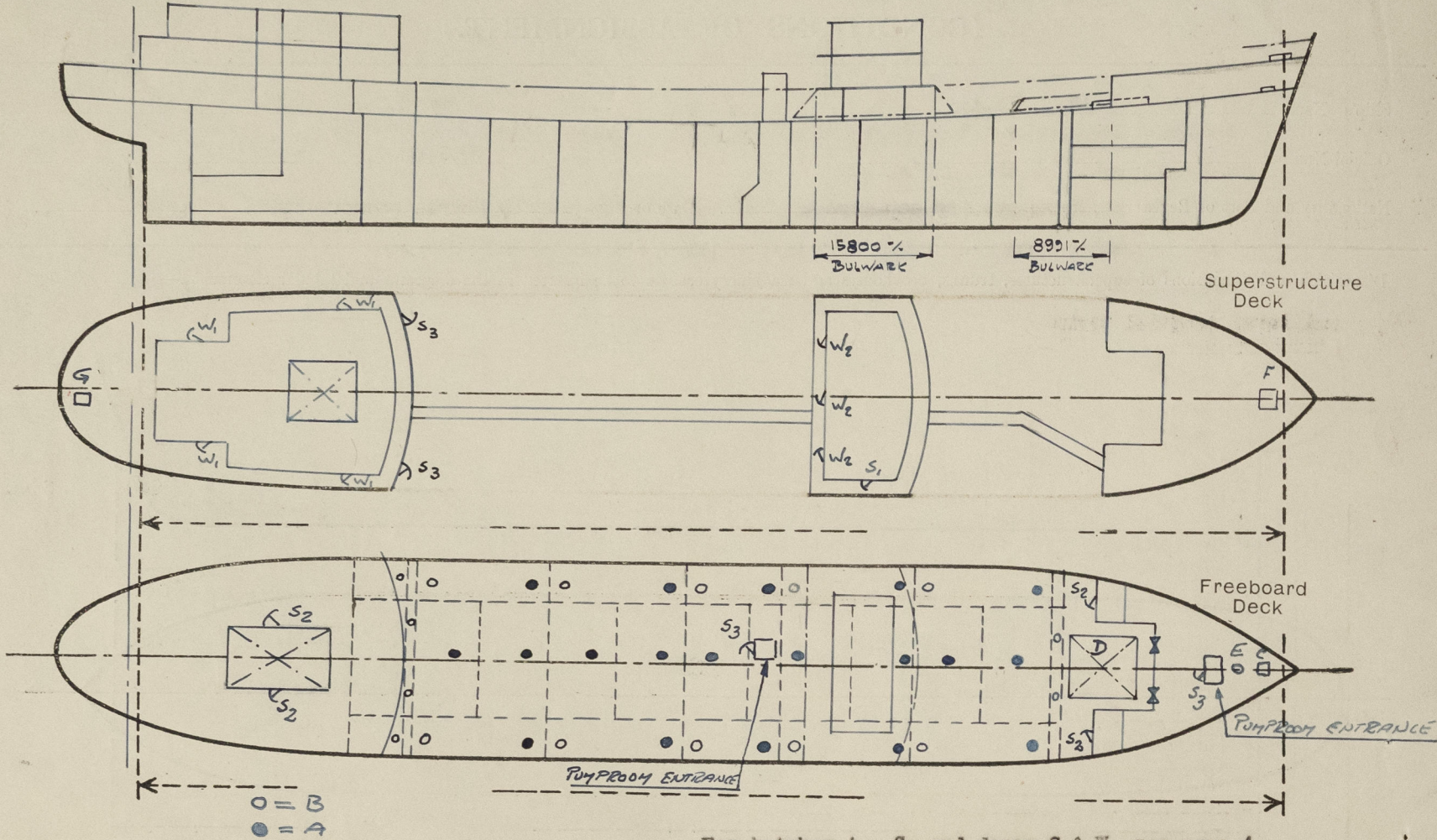
Particulars of Closing Appliances (state if capable of being manipulated from both sides).

Poop Bulkhead ... ..	Hinged watertight steel doors, operable from both sides.
Raised Quarter Deck Bulkhead ...	---
Bridge, After Bulkhead ... ..	---
Bridge, Forward Bulkhead ... ..	---
Forecastle Bulkhead ... ..	Hinged steel doors and portable steel plates, secured by hook bolts not passing through bulkhead
Exposed Machinery Casings on Free- board or Raised Quarter Decks ...	---
Exposed Machinery Casings on Super- structure Decks ... ..	---
Machinery Casings within Superstruc- tures not fitted with Class I Closing Appliances ... ..	---
Pump Room Entrance House Deckhouse on Flash Deck ...	Hinged watertight steel door, operable from both sides.



## PARTICULARS OF PROTECTION TO OPENINGS, ETC.

The following diagrams should be used to indicate the positions of cargo and coaling hatchways, gangway, cargo and coaling ports, ventilators, companionways, etc., which would affect the seaworthiness of the ship :—



For hatches A - G, and doors S & W, see page 4.

Particulars of fiddley, funnel and ventilator coamings, engine room skylight and other openings in machinery casing tops and their means of closing :—

Motorship.- Funnel and ventilator coamings on top of casing about 5200 mm. above poop deck efficiently constructed and supported. Engine room skylight of steel. No fiddle openings. ✓

Particulars of Flush Bunker Scuttles :—

None.

Particulars of Companionways :—

Forward pump room entrance house in forecandle with opening 1410 x 610 mm. and 610 mm. and hinged watertight steel door.

Particulars of Ventilators in exposed positions on freeboard and superstructure decks :—

All ventilators on freeboard and superstructure decks are efficiently constructed and supported with coamings 915 mm. in height or above. All provided with means of closing. ✓

Particulars of Air Pipes in exposed positions on freeboard, raised quarter, or superstructure decks :—

All air pipes on freeboard and forecastle decks are 915 mm. in height or above, and on poop deck 465 mm. in height or above. All of steel of gooseneck type and provided with means of closing.

Particulars of Gangway Cargo and Coaling Ports :—

None.

Particulars of Scuppers and Sanitary Discharge Pipes :—

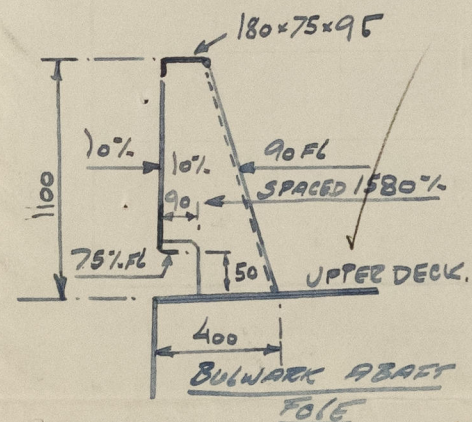
Sanitary discharges and scuppers from bridge house accommodation led overboard above upper deck and fitted with non-return valve at the ship's side.

Sanitary discharges and scuppers from accommodation in poop and on poop deck led over board about 1000 mm. above LWL in engine room and fitted with non-return valve at the ship's side. ✓

Scupperns from accommodation, in poop and on poop deck led to engine room bilges and fitted with water trap and lever weighted cocks.

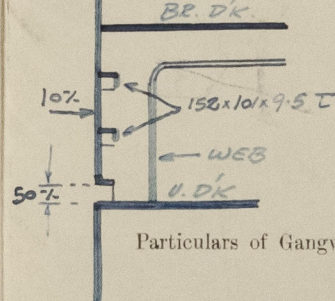
Particulars of Side Scuttles :—

Side scuttles strongly constructed of brass with hinged deadlights fitted in poop and forecastle.



Vertical distance of Sill of lowest Side Scuttle above top of keel..... 3800 mm.

Particulars of Guard Rails :—

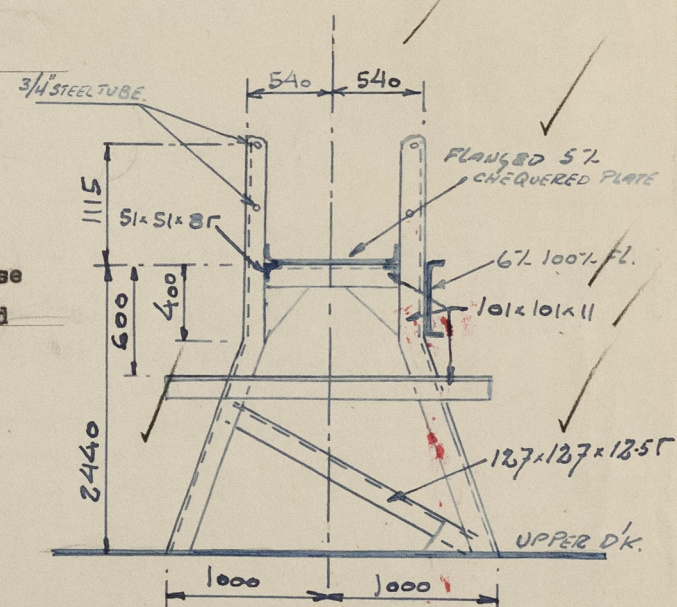


Open rails on upper deck, poop deck and fore-castle deck 1070 mm. in height with 3 rods and stanchions about 1500 mm. apart, supported at every 3rd to 4th stanchions. Bulwark fitted on upper deck in way of bridge house and from fore-castle bulkhead to 8991 mm. abaft the same bulkhead (See sketch above)

Particulars of Gangways, Lifelines, etc. :—

Gangway fitted from poop to bridge house and from bridge house to forecassle with supports as per sketch about 3160 mm. apart and welded to deck.

Guard rails with 2 rods and stanchions spaced about 1600



Particulars of Freeing Arrangements.						
	Length of Bulwark	Height of Bulwark	Size of Freeing Ports	Number each side	Area each side	Rule area each side
After Well ... ..	Open					
Forward Well ... ..						

State position of each freeing port	...	...	{ After Well :— { Forward Well :—
(F. and A. position and height above deck edge)			

State whether the freeing ports are fitted with shutters, bars, or rails, and give particulars of such :—

Additional area where sheer is less than standard.



# PARTICULARS OF PROTECTION TO OPENINGS, ETC.

HATCHWAYS ON FREEBOARD AND SUPERSTRUCTURE DECKS.										
			A	B	C	D	E	Fcile dk	Poop dk	
Description of Hatchway ... ..			Main cargo tank hatch	Vent.hatches Coff. F.O.T.	F.P. store	Dry cargo hold	F.P. store	Forecastle F	Poop store G	
Dimensions of Hatchway ... ..			1770x670	650 x 510	200x1200	5368x4596	450 x 350	580x580	600 x 400	
COAMINGS	{	Height above Deck ... ..	800 ✓	200	230	800 ✓		630	100	
		Thickness { Sides ... ..	10 ✓	10 ✓	10 ✓	11 ✓		10 ✓	10	
			Ends ... ..							
		Stiffeners ... ..	2 á 75x101	---	---	---		150x90x10 r	---	---
		Brackets, Stays ... ..	---	---	---	---		1	---	---
HATCH BEAMS	{	Number ... ..								
		Spacing ... ..								
		Scantling and Sketch ... ..								
		Bearing Surface ... ..								
FORE AND AFTERS	{	Number ... ..				Tr.stiff				
		Spacing ... ..				200x100x11 r				
		Unsupported Lengths ... ..				á 637/660				
		Scantling* and Sketch ... ..				2 long stiff.				
		Bearing Surface ... ..				150 x 101 ✓				
HATCH COVERS	{	Material ... ..	Steel	Steel	Steel	Steel	Steel	Steel	Steel	
		Thickness ... ..	15	15	8 stiff.	7.5	10	8	15	
		How fitted ... ..	Hinged WT	Hinged WT	Hinged WT	von Tell	Manhole cover	Hinged WT	Hinged WT	
		Bearing Surface ... ..	---	---	---	---	---	---	---	
		Spacing of Cleats or Toggles.. ... ..	14 toggles	6 toggles	2 hinges	< 580 mm.	14 bolts	2 hinges	6 toggles	
Number of Tarpaulins... ..			---	---	4 toggles	---	á 3/4 ✓	4 toggles	---	
*Are wood fore and afters steel shod at all bearing surfaces? -----										
Are battens and wedges efficient and in good condition? -----										
Are tarpaulins in good condition and in accordance with rule requirements? -----										
Are lashings provided in accordance with rule requirements? -----										

\*Are wood fore and afters steel shod at all bearing surfaces ?  
 Are battens and wedges efficient and in good condition ?  
 Are tarpaulins in good condition and in accordance with rule requirements ?  
 Are lashings provided in accordance with rule requirements ?

Particulars of any special features :—

Hatches A - G, and doors S & W (See sketch page 2).

- S<sub>1</sub> = Steel hinged door, sill 460 mm., ✓
- S<sub>2</sub> = Steel hinged door, ✓
- S<sub>3</sub> = Steel hinged watertight door, sill 610 mm., ✓
- W<sub>1</sub> = Wood hinged door, sill 460 mm., ✓
- W<sub>2</sub> = Wood hinged door. ✓



© 2020

Lloyd's Register  
Foundation



CREW ACCOMMODATION. (S = Satisfactory).													
CABINS ETC. FOR:-	WHERE	DEPTH M.	NET VOLUME m <sup>3</sup>	TOTAL AREA m <sup>2</sup>	DAY- LIGHT	WIND- ROCK.	BATH Nos.	CHAINS	EL.- LIGHT	WASH BASIN	W.C.	VENT- ILATION	HEAT. REMARKS.
<b>CAPTAIN:-</b>													
Bedroom	Upper bridge	2.34	26.0	12.6	S.	2	1	1	S.	-	-	S.	S.
Dayroom	"	2.33	42.5	19.1	S.	-	-	3 + Settee	S.	-	-	S.	S.
Bathroom	"	2.50	10.0	4.0	S.	-	-	-	S.	1	1	S.	S.
Private Bin. Room	"	2.31	36.0	15.8	S.	-	-	8	S.	-	-	S.	S.
<b>1st OFFICER:-</b>													
Cabin	"	2.33	32.9	15.6	S.	1	1	3 + Settee	S.	-	-	S.	S.
Bathroom	"	2.50	10.0	4.0	S.	-	-	-	S.	1	1	S.	S.
<b>2nd OFFICER:-</b>													
Cabin	"	2.17	18.7	9.0	S.	1	1	1 + Settee	S.	1	-	S.	S.
<b>3rd OFFICER:-</b>													
Cabin	"	2.31	21.9	11.1	S.	1	1	1 + Settee	S.	1	-	S.	S.
<b>2nd ENGINEER:-</b>													
Cabin	"	2.15	19.7	10.9	S.	2	1	1 + Settee	S.	1	-	S.	S.
<b>BOATMAN:-</b>													
Cabin	"	2.32	24.9	10.9	S.	2	1	2 + Settee	S.	1	-	S.	S.
Bathroom	"	2.50	9.5	3.8	S.	-	-	-	S.	1	-	S.	S.
Bathroom	"	2.50	9.5	3.8	-	-	-	-	S.	1	-	S.	S.
W.C. for 2 men.	"	2.50	4.0	1.6	-	-	-	-	S.	-	1	S.	S.
do.	"	2.50	4.0	1.6	-	-	-	-	S.	-	1	S.	S.
Officers' Mess & Dayroom.	"	2.37	82.7	39.8	S.	-	-	27 + Settee	S.	-	-	S.	S.
Pantry.	"	2.34	13.2	6.9	S.	-	-	-	S.	-	-	S.	S.
Purser's Office	"	2.13	24.7	13.2	S.	-	-	4	S.	-	-	S.	S.
<b>3rd OFFICER Sr.</b>													
Cabin	Navigation bridge.	2.10	14.2	8.3	S.	2	1	1 + Settee	S.	1	-	S.	S.
<b>3rd OFFICER Jr.</b>													
Cabin	"	2.10	12.5	7.5	S.	2	1	1 + Settee	S.	1	-	S.	S.
<b>1st W. OFFICER:-</b>													
Cabin	"	2.10	13.7	7.8	S.	2	1	1 + Settee	S.	1	-	S.	S.
<b>2nd W. OFFICER:-</b>													
Cabin	"	2.10	14.6	8.1	S.	2	1	1 + Settee	S.	1	-	S.	S.
Office	"	2.10	14.3	7.8	S.	-	-	2	S.	-	-	S.	S.
<b>2 ENGINEER</b>													
Cabin	"	2.10	14.6	8.1	S.	2	2	2 + Settee	S.	2	-	S.	S.
Bathroom.	"	2.25	5.8	2.6	-	-	-	-	S.	1	-	S.	S.
W.C. for 6 men.	"	2.50	2.8	1.1	-	-	-	-	S.	-	1	S.	S.
W/T Room.	"	2.10	15.3	7.3	S.	-	-	1	S.	-	-	S.	S.
Sick-bath Stow.	lower bridge	2.34	16.5	7.7	S.	1	1	1 + Settee	S.	1	-	S.	S.
REPAIRING.	"	2.34	15.5	6.5	S.	-	-	-	S.	-	-	S.	S.
<b>HOSPITAL:-</b>													
Cabin	"	2.33	35.6	16.6	S.	4	6	1	S.	-	-	S.	S.
Bathroom	"	2.50	8.5	3.7	-	-	-	-	S.	1	-	S.	S.
W.C.	"	2.50	2.8	1.1	-	-	-	-	S.	-	1	S.	S.
<b>1st ENGINEER:-</b>													
Dayroom	Upper Poop- house.	2.24	35.2	15.9	S.	2	-	3 + Settee	S.	-	-	S.	S.
Bedroom	"	2.23	17.6	9.1	S.	2	1	1 + Settee	S.	-	-	S.	S.
Bathroom	"	2.37	12.6	5.3	S.	-	-	-	S.	1	1	S.	S.



CREW ACCOMMODATION. (S = Satisfactory)														
CABINS NO. FOR:-	WHERE	HEIGHT ft.	WIDE VOLUME cu. ft.	AREA sq. ft.	INT- LIGHT	WALL- POSS	HEAD Nos.	Chairs	ILL- LIGHT	WASH BASIN	W.C.	HEATER.	HEAT.	REMARKS.
<b>2nd ENGINEER.</b>														
Cabin	Upper Peep-house.	2.24	32.4	16.3	S.	1	1	2 + settee	S.	-	-	S.	S.	+ Shower & Bath.
Bathroom	"	2.35	8.7	5.7	-	-	-	-	S.	1	1	S.	S.	
OFFICE:-	"	2.24	21.8	12.0	S.	-	-	2 + Settee	S.	-	-	S.	S.	
<b>3rd ENGINEER Sr.</b>														
Cabin	"	2.25	13.3	10.0	S.	2	1	1 + Settee	S.	1	-	S.	S.	
<b>3rd ENGINEER Jr.</b>														
Cabin	"	2.25	17.5	8.7	S.	1	1	1 + Settee	S.	1	-	S.	S.	
<b>1-4th ENGINEER.</b>														
Cabin	"	2.22	19.3	7.3	S.	1	1	1 + Settee	S.	1	-	S.	S.	
1 - do.	"	2.22	15.8	8.1	S.	1	1	1 + Settee	S.	1	-	S.	S.	
2 - do.	"	2.24	19.4	10.0	S.	2	2	1 + Settee	S.	1	-	S.	S.	
<b>1 ASSISTANT ENGINEER:-</b>														
Cabin	"	2.24	15.5	9.5	S.	1	1	1 + Settee	S.	1	-	S.	S.	
<b>2 APPARICES:</b>														
Cabin	"	2.23	19.0	9.9	S.	2	2	1 + Settee	S.	1	-	S.	S.	
WC for 3 men.	"	2.35	3.8	1.6	-	-	-	-	S.	-	1	S.	S.	
-do-	"	2.35	3.8	1.6	-	-	-	-	S.	-	1	S.	S.	
-do-	"	2.35	3.8	1.6	-	-	-	-	S.	-	1	S.	S.	
Bathroom	"	2.35	7.2	3.0	-	-	-	-	S.	1	-	S.	S.	+ Shower & Bath
Bathroom	"	2.35	7.2	3.0	-	-	-	-	S.	1	-	S.	S.	- do -
<b>2 ASS. FOR GALLEY:</b>														
Cabin	"	2.40	14.2	6.8	S.	2	2	1 + Settee	S.	-	-	S.	S.	
do. do.	"	2.38	21.0	9.0	S.	2	2	1 + Settee	S.	-	-	S.	S.	
<b>3 - WAITERS:</b>														
Cabin	"	2.37	15.2	7.9	S.	3	3	1 + Settee	S.	-	-	S.	S.	
do. do.	"	2.37	14.6	7.5	S.	3	3	1 + Settee	S.	-	-	S.	S.	
do. do.	"	2.39	20.7	8.5	S.	3	3	1 + Settee	S.	-	-	S.	S.	
do. do.	"	2.40	18.6	8.8	S.	3	3	1 + Settee	S.	-	-	S.	S.	
<b>COOK:-</b>														
Cabin	"	2.20	10.6	5.2	S.	1	1	1 + Settee	S.	1	-	S.	S.	
<b>2 ASS. FOR GALLEY:-</b>														
Cabin	"	2.30	13.5	5.8	S.	2	2	1 + Settee	S.	-	-	S.	S.	
WC for 9 men.	"	2.37	2.4	1.0	S.	-	-	-	S.	-	1	S.	S.	
WC for 10 men.	"	2.37	2.4	1.0	S.	-	-	-	S.	-	1	S.	S.	
WASHROOM for 18 men.	"	2.40	12.5	5.2	S.	-	-	-	S.	3	-	S.	S.	+ 2 Showers & Trough.
PEETTY OFFICER'S MESS:-	Lower Peep-house.	2.23	53.3	24.5	S.	-	-	21 + Settee	S.	-	-	S.	S.	
PARTY :-	"	2.30	70.1	35.6	S.	-	-	-	S.	-	-	S.	S.	
<b>BOATWAIN Sr.</b>														
Cabin	Peep P.	2.20	15.7	8.6	S.	1	1	1 + Settee	S.	1	-	S.	S.	
<b>3 BOATWAIN:-</b>														
Cabin	"	2.32	19.2	9.5	S.	3	3	1 + Settee	S.	-	-	S.	S.	
<b>1 BOATWAIN:-</b>														
Cabin	"	2.32	18.3	8.9	S.	3	3	1 + Settee	S.	-	-	S.	S.	
<b>BOATWAIN Jr. CARPENTER:-</b>														
Cabin	"	1.90	15.7	8.7	S.	2	2	1 + Settee	S.	1	-	S.	S.	



## CREW ACCOMMODATION.

CABINS ETC. FOR:-	DECK	BRIGHT H.	NET VOLUME cu ft	TOTAL AREA sq ft	FAT- LIGHT	WASH- BORE	BEDS Nos.	CHAIRS.	EL.- LIGHT	BATH BASIN	WC	VENTI- LATION	HEAT.	REMARKS.
<u>2 SEAMEN:-</u>														
Cabin	Deck P.	2.36	19.3	8.9	S.	2	2	1 + Settee	S.	-	-	S.	S.	
<u>2 SEAMEN:-</u>														
Cabin	"	2.38	18.3	8.4	S.	2	2	1 + Settee	S.	-	-	S.	S.	
<u>2 SEAMEN:-</u>														
Cabin	"	2.38	17.3	7.8	S.	2	2	1 + Settee	S.	-	-	S.	S.	
<u>2 SEAMEN:-</u>														
Cabin	"	2.38	16.9	8.2	S.	2	2	1 + Settee	S.	-	-	S.	S.	
<u>2 COOKS:-</u>														
Cabin	"	2.25	15.5	7.4	S.	2	2	1 + Settee	S.	1	-	S.	S.	
STEWARDS (Cabin)	"	2.26	12.6	6.9	S.	2	1	1 + Settee	S.	1	-	S.	S.	
WASHROOM FOR 14/3 MEN	"	2.43	20.0	8.2	S.	-	-	-	S.	3	-	S.	S.	+ 2 Showers & Troughs.
W.C. for 7 Men	"	2.43	5.9	2.4	-	-	-	-	S.	-	1	S.	S.	
W.C. for 7 "	"	2.43	4.4	1.8	-	-	-	-	S.	-	1	S.	S.	
MENS FOR ENG.	"	2.20	23.1	10.9	S.	-	-	8 + settee = 12.	S.	-	-	S.	S.	
WASHROOM FOR PARTY OFF.	Deck Centr.	2.42	25.0	5.0	-	-	-	-	S.	1	-	S.	S.	+ 2 Showers & Troughs.
W.C. FOR 14/4 PARTY OFFICER.	"	2.42	3.2	1.3	-	-	-	-	S.	-	1	S.	S.	
-do-	"	2.42	3.2	1.3	-	-	-	-	S.	-	1	S.	S.	
-do-	"	2.42	3.2	1.3	-	-	-	-	S.	-	1	S.	S.	
-do-	"	2.42	3.2	1.3	-	-	-	-	S.	-	1	S.	S.	
MENS FOR DECK.	Deck S.	2.20	46.3	21.5	S.	-	-	16 + settee = 24.	S.	-	-	S.	S.	
PARTY	"	2.38	18.6	7.8	S.	-	-	-	S.	-	-	S.	S.	
<u>3 CREASERS.</u>														
Cabin	"	2.36	19.3	10.3	S.	3	3	1 + settee	S.	-	-	S.	S.	
do. do.	"	2.32	22.8	11.0	S.	3	3	do.	S.	-	-	S.	S.	
do. do.	"	2.38	20.5	10.9	S.	3	3	do.	S.	-	-	S.	S.	
<u>2 FIREMEN, 1 CREASER:-</u>														
Cabin	"	2.20	21.0	10.3	S.	3	3	do.	S.	1	-	S.	S.	
<u>2 ELECTR.</u>														
Cabin	"	2.22	19.6	9.4	S.	2	2	do.	S.	1	-	S.	S.	
<u>1 MOTORMAN, 1 MOTOR STOCK CHIEF:-</u>														
Cabin	"	2.22	18.8	9.4	S.	2	2	do.	S.	1	-	S.	S.	
<u>2 MOTORMAN.</u>														
Cabin	"	2.22	17.4	8.7	S.	2	2	do.	S.	1	-	S.	S.	
<u>2 ASSISTANTS to FIREMEN:</u>														
Cabin	"	2.22	15.2	7.3	S.	2	2	do.	S.	1	-	S.	S.	
WASHROOM FOR 12/3 MEN:	"	2.46	22.0	9.0	S.	-	-	-	S.	3	-	S.	S.	+ 2 Showers & Troughs.
W.C. for 6 Men:	"	2.46	3.2	1.3	-	-	-	-	S.	-	1	S.	S.	
W.C. for 6 Men:	"	2.46	3.5	1.4	-	-	-	-	S.	-	1	S.	S.	



© 2020

Lloyd's Register  
Foundation



IV.  
Motor Tanker "ISLAS ORCADAS".

Continuation of Report No. 10.

dated 13th March, 1951, on the

## PASSENGER ACCOMMODATION.

CABINS ETC. FOR:-	WHERE	HEIGHT M.	NET VOLUME M <sup>3</sup>	TOTAL AREA M <sup>2</sup>	DAY- LIGHT	WARD- ROBE	BEDS Nos.	CHAIRS	EL.- LIGHT	BATH BASIN	W.C.	VENTI- LATION.	HEAT.	REMARKS.
4 Passengers	Lower Bridge Port.	2.31	35.7	15.4	S.	4	4	3 + setee	S.	1	-	S.	S.	
Pantry:-	"	2.20	17.8	10.2	S.	-	-	-	S.	-	-	S.	S.	
2 Passengers	"	2.32	21.7	9.35	S.	2	2	2 + setee	S.	1	-	S.	S.	
4 Passengers	"	2.32	34.4	14.8	S.	4	4	3 + setee	S.	1	-	S.	S.	
W.C.	"	2.50	4.2	1.70	-	-	-	-	S.	-	1	S.	S.	
W.C.	"	2.50	4.2	1.70	-	-	-	-	S.	-	1	S.	S.	
W.C.	"	2.50	4.2	1.70	-	-	-	-	S.	-	1	S.	S.	
W.C.	"	2.50	4.2	1.70	-	-	-	-	S.	-	1	S.	S.	
Bathroom	"	2.50	7.3	2.9	-	-	-	-	S.	1	-	S.	S.	+ Shower & Bath.
Bathroom	"	2.50	7.3	2.9	-	-	-	-	S.	1	-	S.	S.	+ Shower & Bath.
Smoking Room	"	2.32	35.8	15.5	S.	-	-	8 + setee	S.	-	-	S.	S.	
Dining Room	Lower Bridge S.	2.31	68.2	29.5	S.	-	-	24	S.	-	-	S.	S.	
4 Passengers	"	2.33	39.6	17.0	S.	4	4	3 + setee	S.	1	-	S.	S.	
2 Passengers	"	2.32	32.5	14.0	S.	2	2	2 + setee	S.	1	-	S.	S.	
2 Passengers	"	2.32	22.0	9.5	S.	2	2	2 + setee	S.	1	-	S.	S.	
2 Passengers	"	2.32	22.4	10.4	S.	2	2	2 + setee	S.	1	-	S.	S.	
Bathroom	"	2.50	7.3	2.9	-	-	-	-	S.	1	-	S.	S.	+ Shower & Bath.
Bathroom	"	2.50	7.3	2.9	-	-	-	-	S.	1	-	S.	S.	+ Shower & Bath.
Toilette	"	2.50	6.4	2.5	-	-	-	-	S.	1	1	S.	S.	+ Bidette
Toilette	"	2.50	6.4	2.5	-	-	-	-	S.	1	1	S.	S.	+ Bidette
W.C.	"	2.50	4.3	1.7	-	-	-	-	S.	-	1	S.	S.	
4 Passengers	Lower Poop Deck P.	2.28	32.8	14.4	S.	4	4	1 + setee	S.	1	-	S.	S.	
Bathroom	"	2.46	7.0	2.85	S.	-	-	-	S.	1	-	S.	S.	+ Shower & Bath.
Bathroom	"	2.46	6.25	2.54	-	-	-	-	S.	1	-	S.	S.	+ Shower & Bath.
W.C.	"	2.46	3.1	1.25	-	-	-	-	S.	-	1	S.	S.	
W.C.	"	2.46	3.1	1.25	-	-	-	-	S.	-	1	S.	S.	
4 Passengers	"	2.26	33.4	14.8	S.	4	4	1 + setee	S.	1	-	S.	S.	
4 Passengers	"	2.26	32.3	14.3	S.	4	4	1 + setee	S.	1	-	S.	S.	
4 Passengers	"	2.24	30.0	13.4	S.	4	4	1 + setee	S.	1	-	S.	S.	
4 Passengers	"	2.26	30.2	13.4	S.	4	4	1 + setee	S.	1	-	S.	S.	
Dining Room	Lower Poop D. Centre.	2.24	83.7	37.4	S.	-	-	40	S.	-	-	S.	S.	
4 Passengers	Lower Poop D. S.	2.28	32.8	14.4	S.	4	4	1 + setee	S.	1	-	S.	S.	
Bathroom	"	2.46	7.0	2.85	S.	-	-	-	S.	1	-	S.	S.	+ Shower & Bath.
Bathroom	"	2.46	6.25	2.54	-	-	-	-	S.	1	-	S.	S.	+ Shower & Bath.
W.C.	"	2.46	3.1	1.25	-	-	-	-	S.	-	1	S.	S.	
W.C.	"	2.46	3.1	1.25	-	-	-	-	S.	-	1	S.	S.	
4 Passengers	"	2.26	33.4	14.8	S.	4	4	1 + setee	S.	1	-	S.	S.	
4 Passengers	"	2.26	32.3	14.3	S.	4	4	1 + setee	S.	1	-	S.	S.	
4 Passengers	"	2.24	30.0	13.4	S.	4	4	1 + setee	S.	1	-	S.	S.	
4 Passengers	"	2.26	30.2	13.4	S.	4	4	1 + setee	S.	1	-	S.	S.	

The dimensions, areas and capacities given above have been personally measured by  
the undersigned and are believed to be correct but they are not guaranteed.

*Harold Lloyd*  
Harold Lloyd's Register  
Foundation