

# T.S.S. HAKONE MARU.

## RUDDER.

SCALE  $\frac{1}{2}$  INCH TO ONE FOOT.

DETAILS  $\frac{1}{2}$  INCH TO ONE FOOT.

DETAILS

SCALE  $\frac{1}{2}$  TO ONE FOOT

COUPLING

RUDDER STOCK PINTLES: FORGED STEEL.  
RUDDER ARMS: CAST

SCANTLING NUMBER.

FOR SEA SPEED NOT EXCEEDING 14 KNOTS.

A (TOTAL AREA) 207.94 SQ. FT.

D 4.59 FT.

A x D 954.44

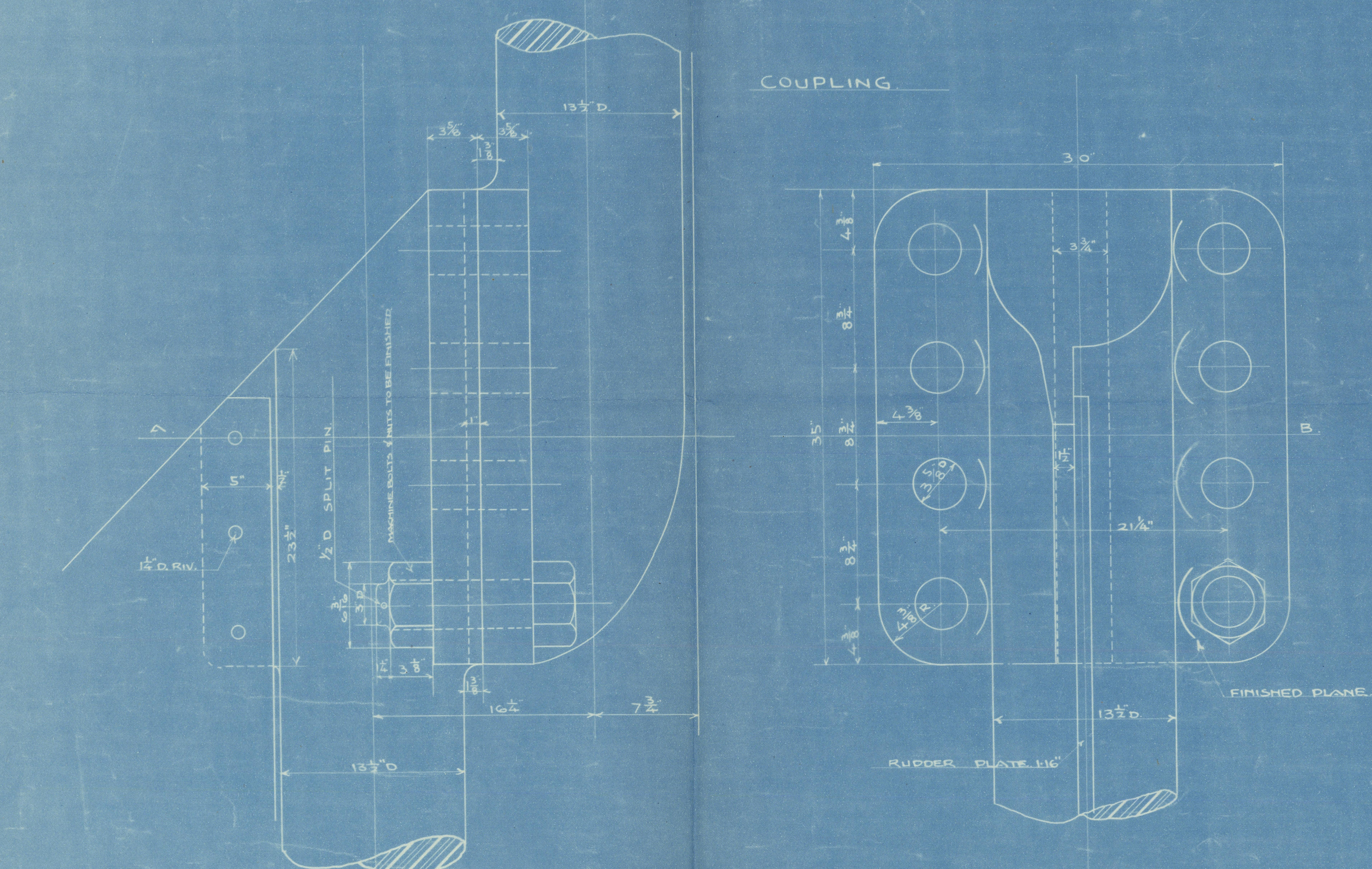
WEIGHTS:-

RUDDER STOCK 6.37 TONS (ABOUT)

MAIN PIECE 5.81 " "

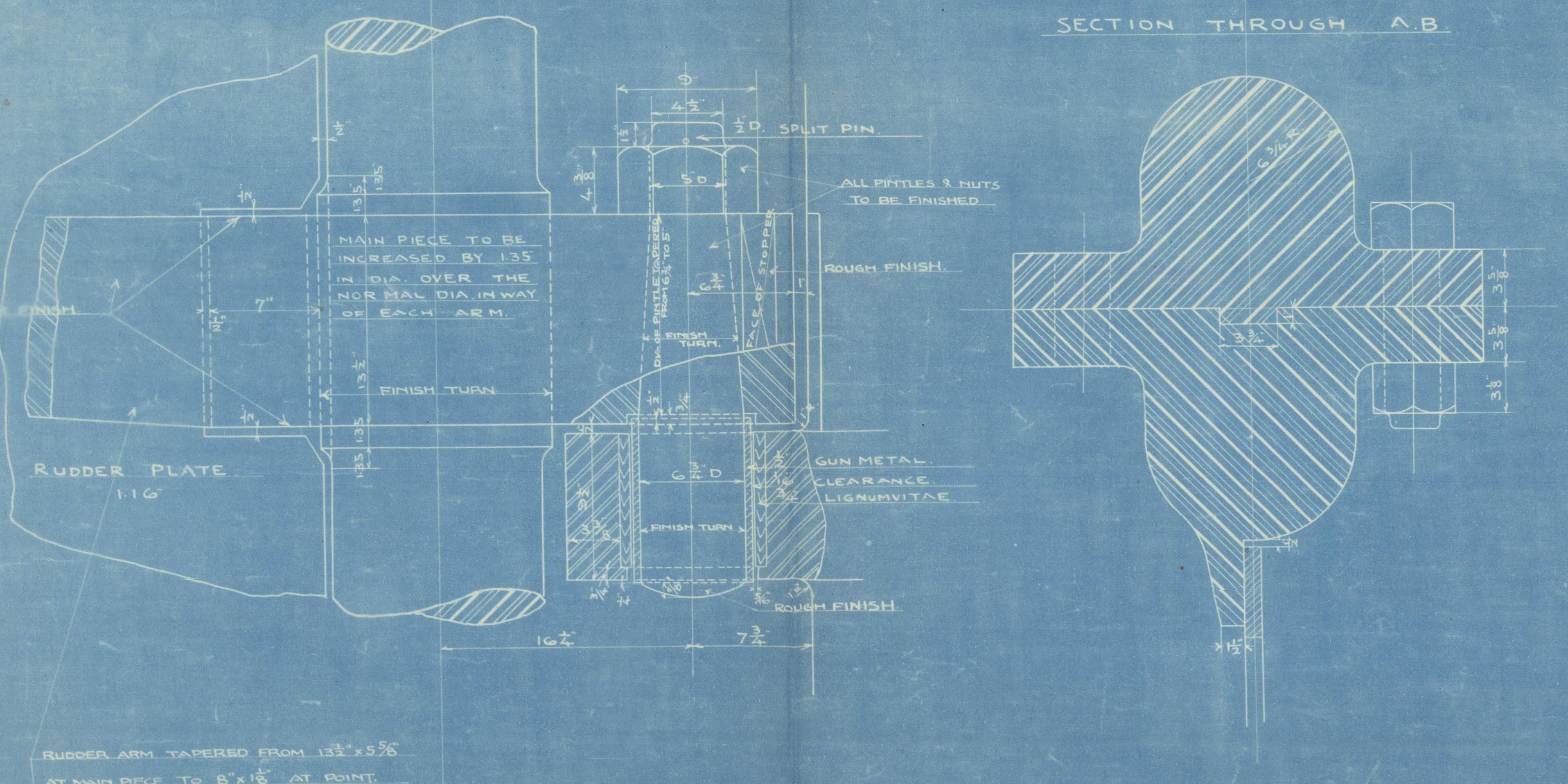
S-ARMS 5.59 " "

17.77 TONS.



STOPPER ARM

SECTION THROUGH A.B.

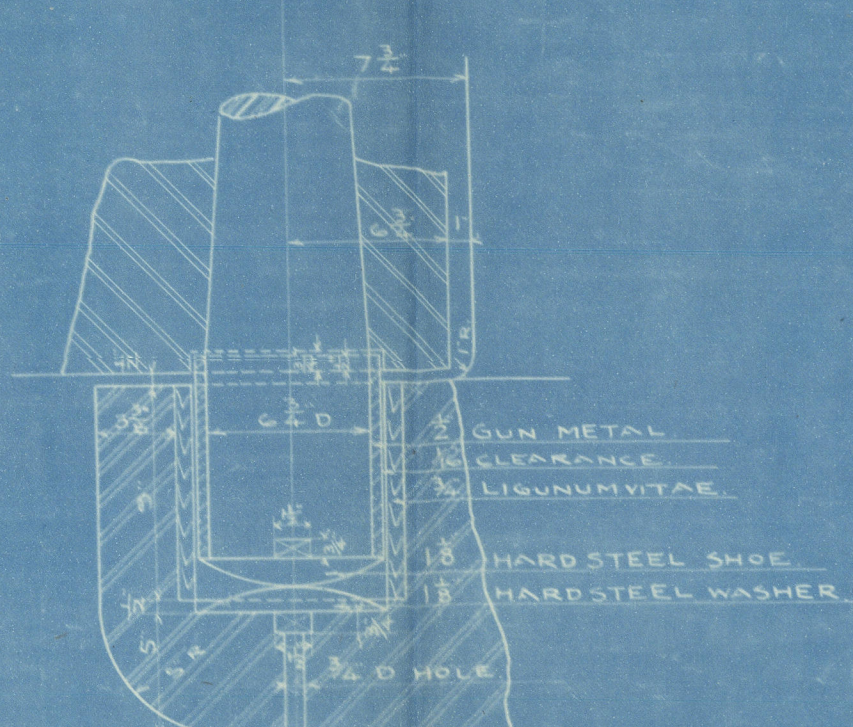


RUDDER ARM YARDED FROM 13 1/2 x 13 1/2  
AT MAIN PIECE TO 8 x 16 AT POINT.

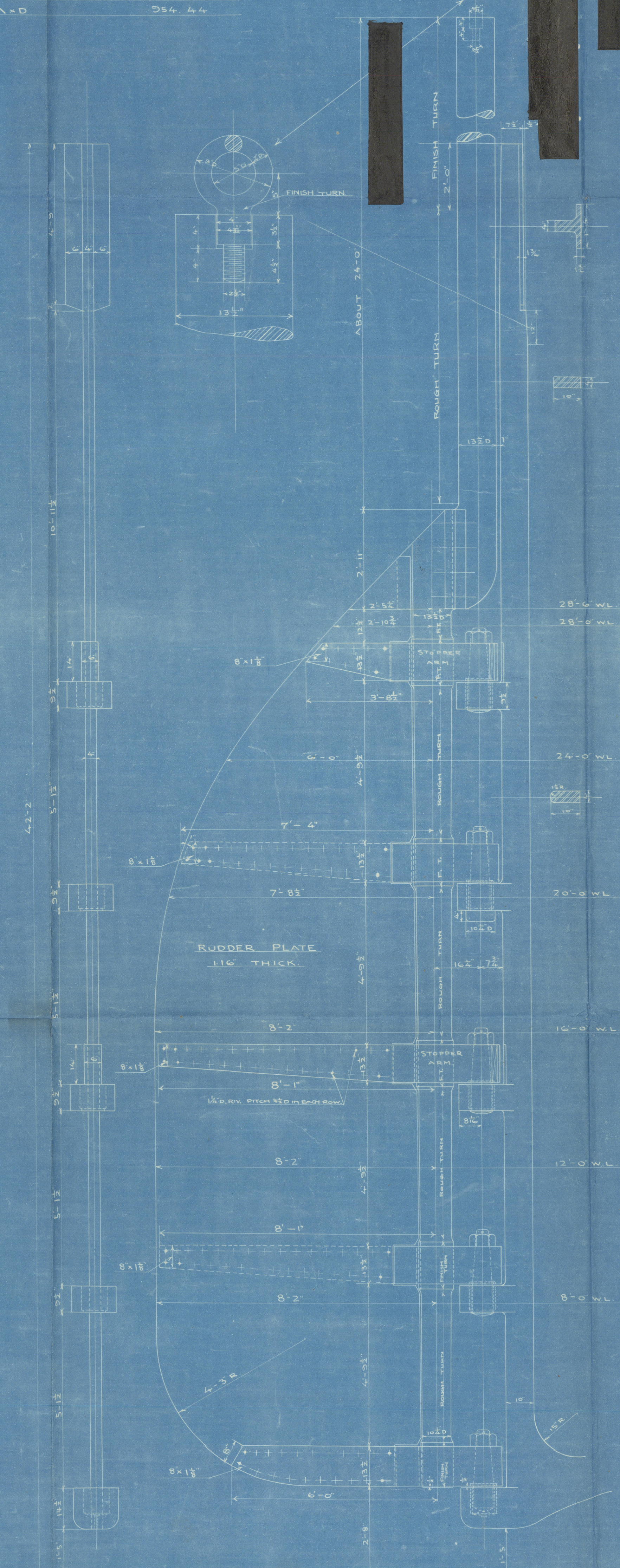
VERTICAL SURFACE NOT TO BE FINISHED

STOPPER ARM  
ORDINARY ARM

HEEL BRACE



HEEL BRACE



REGISTERED  
ZENEN KAITIA L.B.  
NAGASAKI WORKS  
SHIPDESIGNERS OFFICE A.

DRAWN BY  
CHECKED BY  
APPROVED BY  
DESIGNERS OFFICE NO. 15345  
DATE NOV 19. 1921

N. Tani  
8. 7. 20



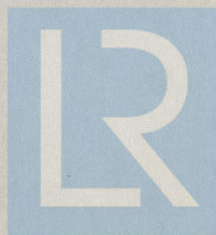
Rudder.

S. S. No. 346.

Mitsubishi Zosen Kaisha.

Nagasaki. Report No. 1341.

"Hakone Maru"



© 2021

Lloyd's Register  
Foundation

010129-010136-0166