

R.A.S.C. V. "OXNA". OIL FUEL BUNKERS. SCALE: - 1/2" = ONE FOOT.

HEIGHT OF OVERFLOW TAKEN AS INLET OF
EXPANSION TANK 5'-3" ABOVE UPPER DECK.

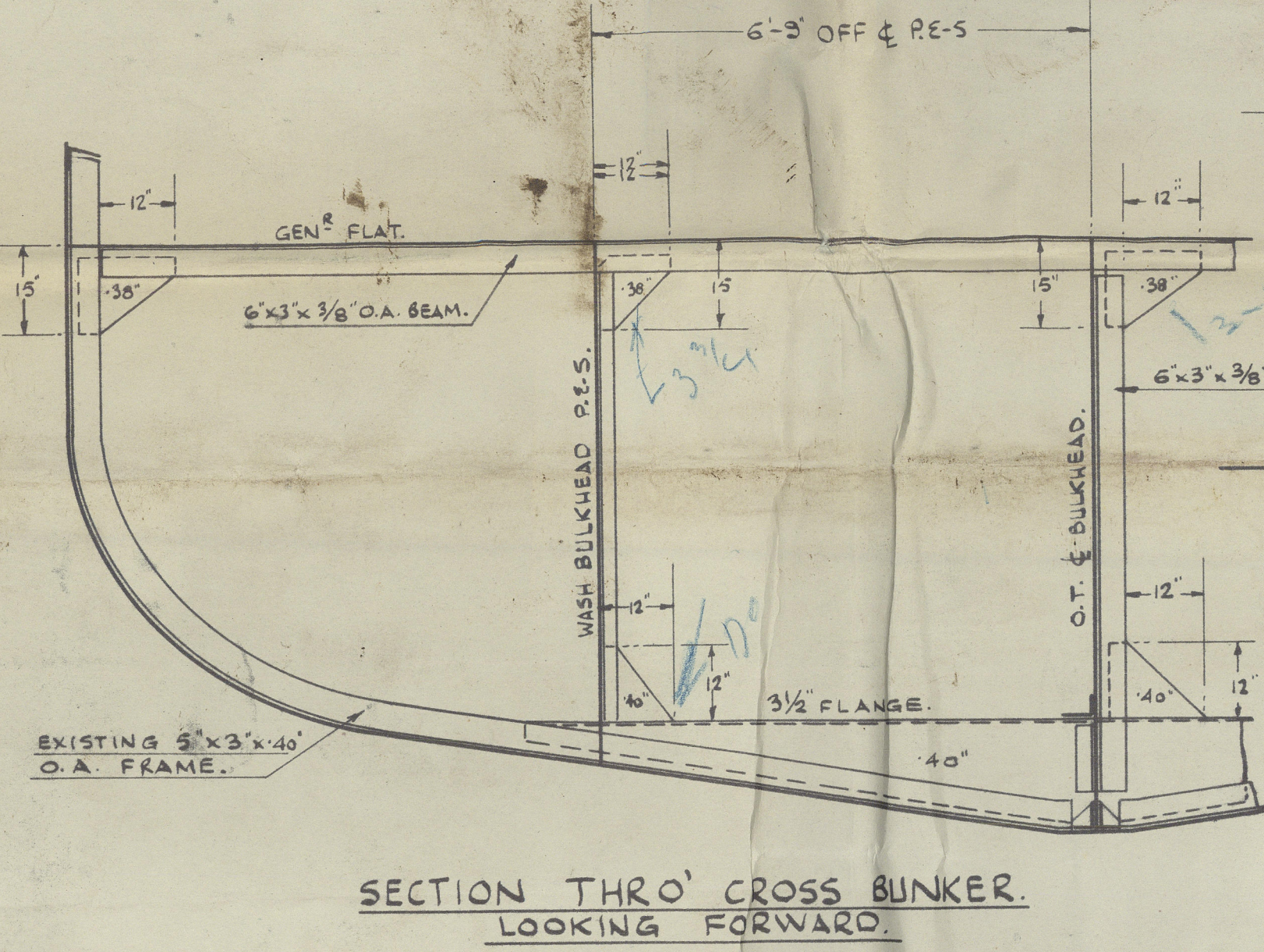
THE REQUIREMENTS OF LLOYD'S RULE TO BE
COMPLIED WITH. F.P. OF OIL FUEL TO BE ABOVE
150°F.

Boundary angles of O.T. Bunkers to be
all right to Surveyor's satisfaction.

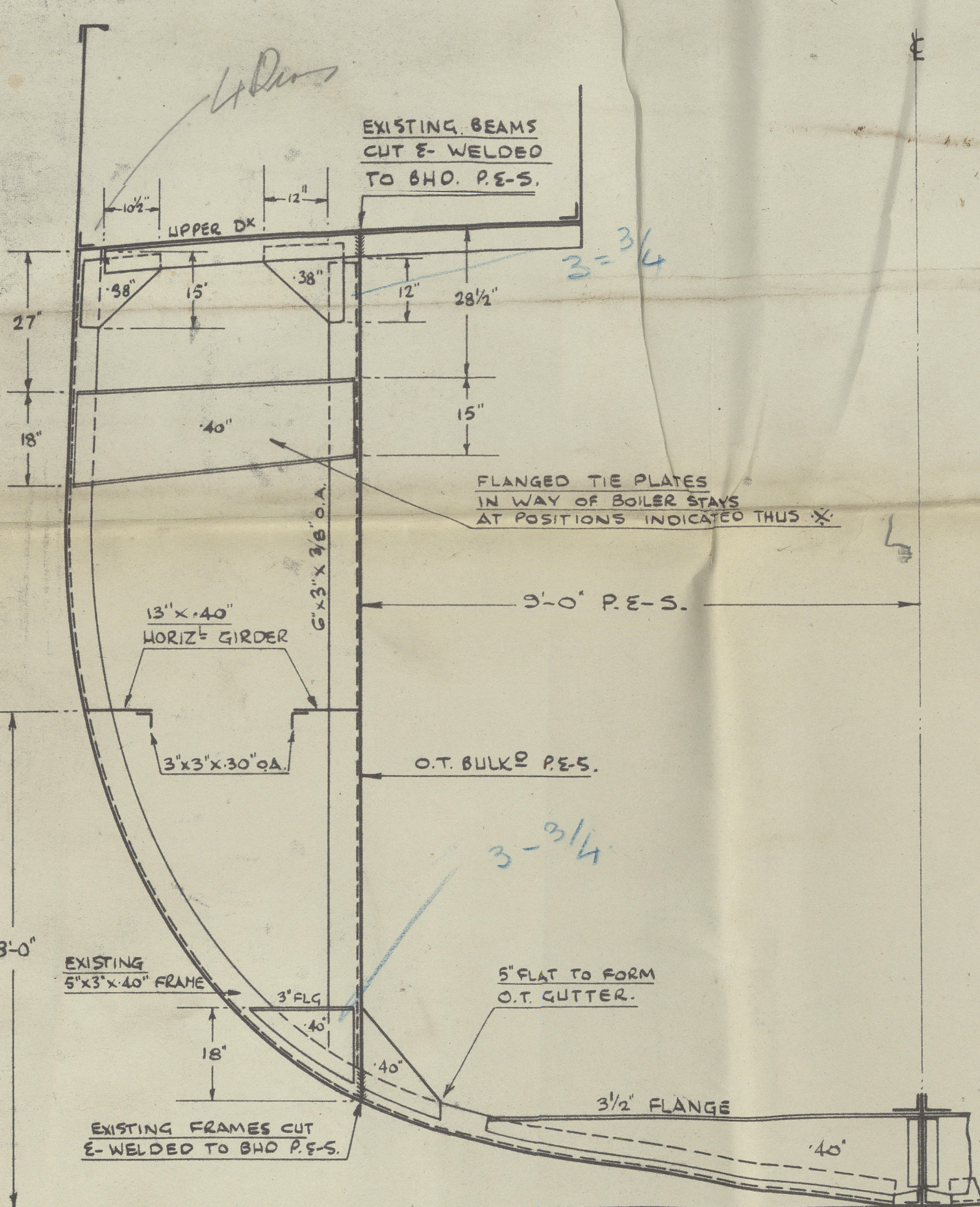
The requirements of Sect. 20 of the
Rules to be complied with.
F.P. of oil fuel to be above 150°F.



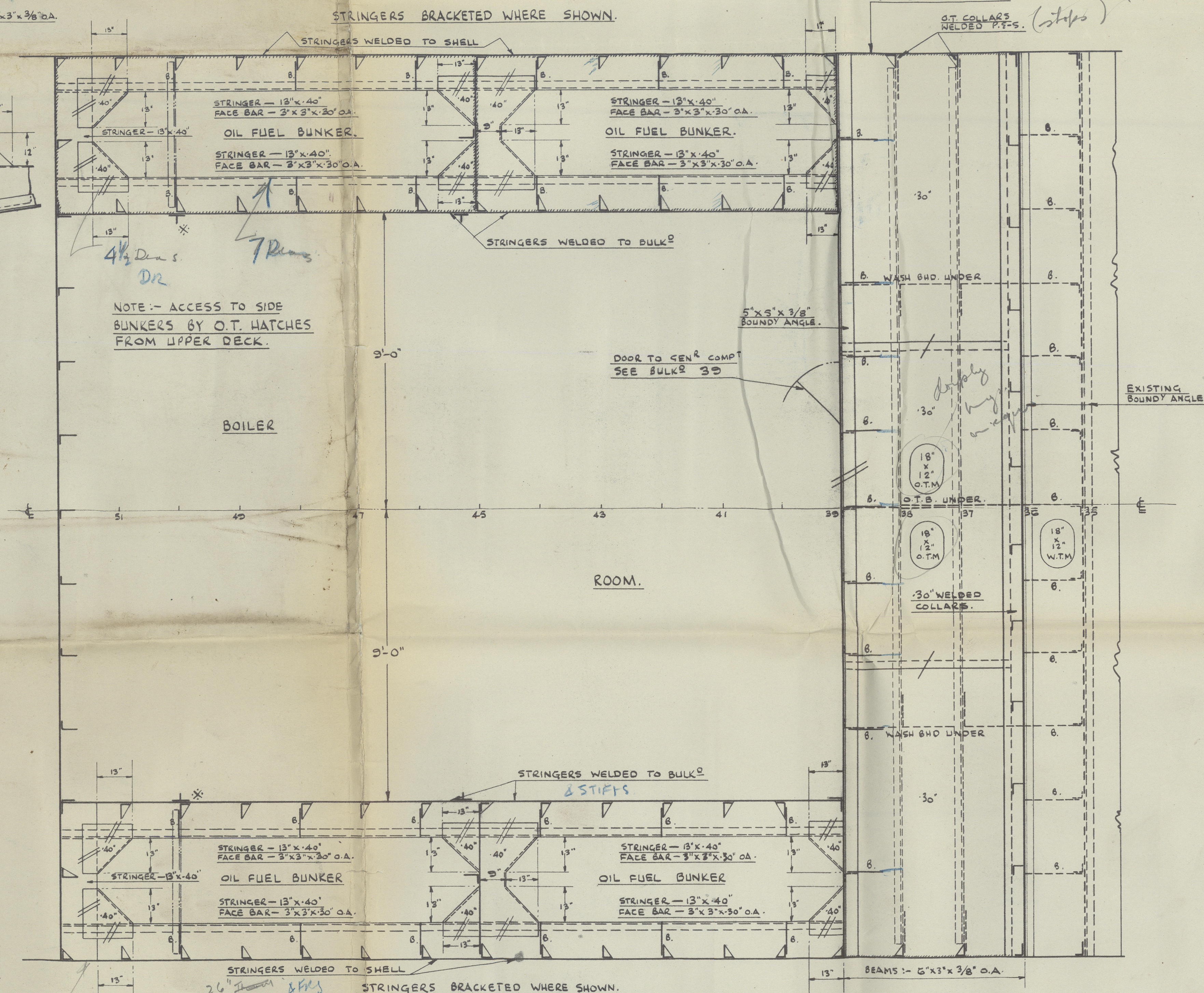
ELEVATION OF O.T. BULKHEAD 52.
3'-0" OFF & PORT & STARBOARD.
DRAWN FOR PORT SIDE LOOKING TO PORT.
STARBOARD SIDE SIMILAR.
STIFFENERS - 6" x 3" x 3/8" O.A. (RIVETED).



SECTION THRO' CROSS BUNKER
LOOKING FORWARD.

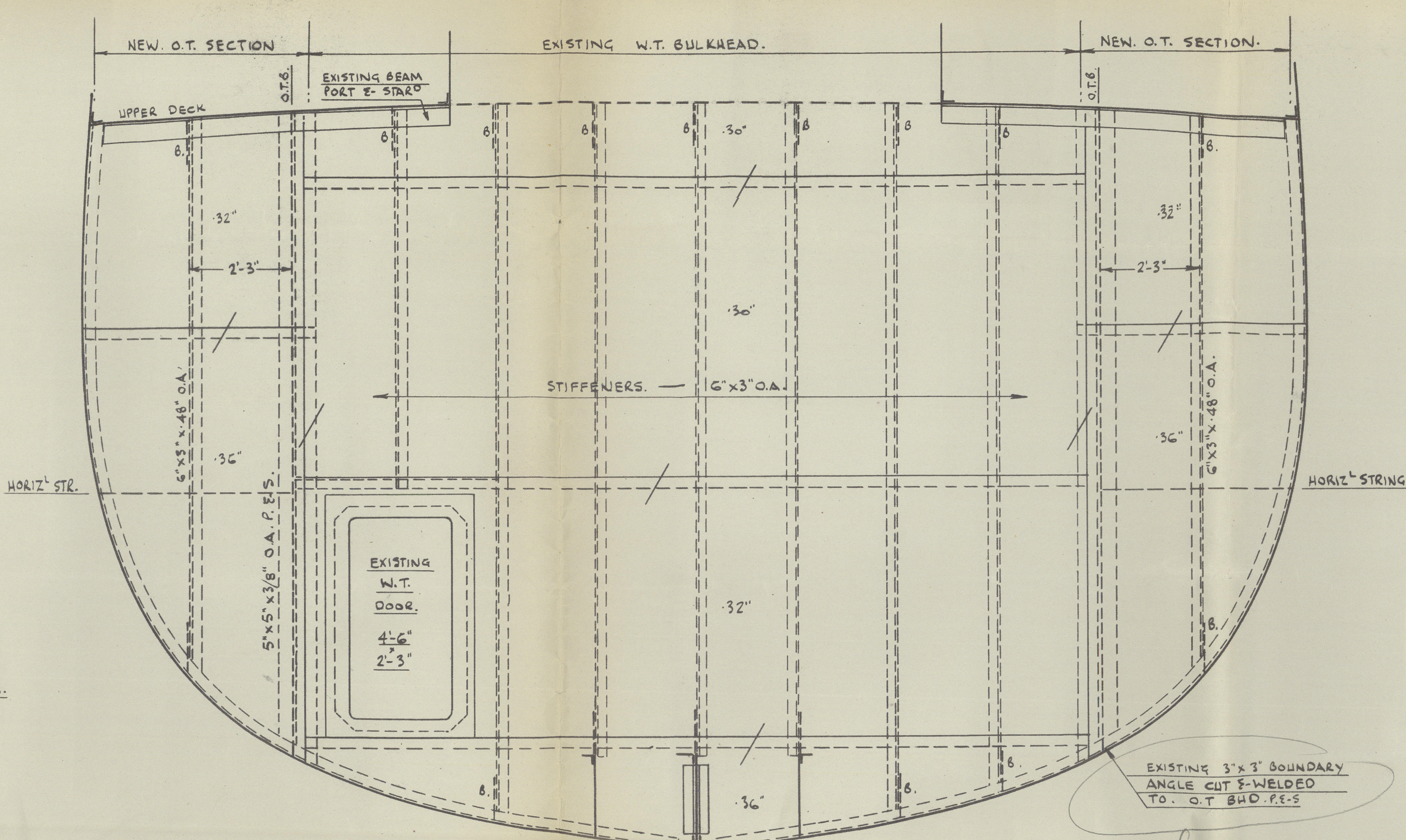


SECTION THRO' SIDE BUNKERS.
DRAWN FOR PORT SIDE, LOOKING FORWARD.
STARBOARD SIDE SIMILAR.

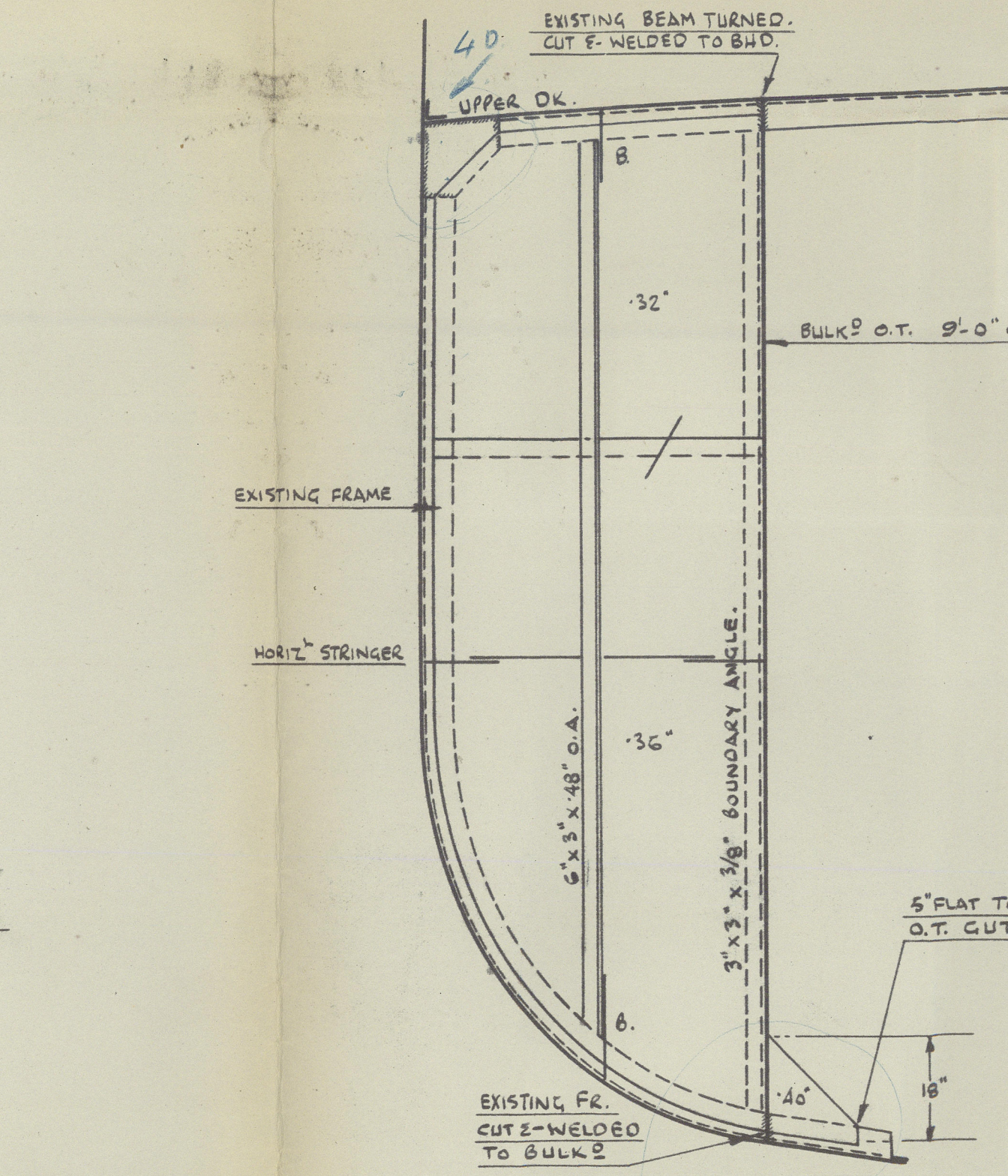


PLAN VIEW OF HORIZ. SIDE GIRDERS & GENERATOR FLAT.

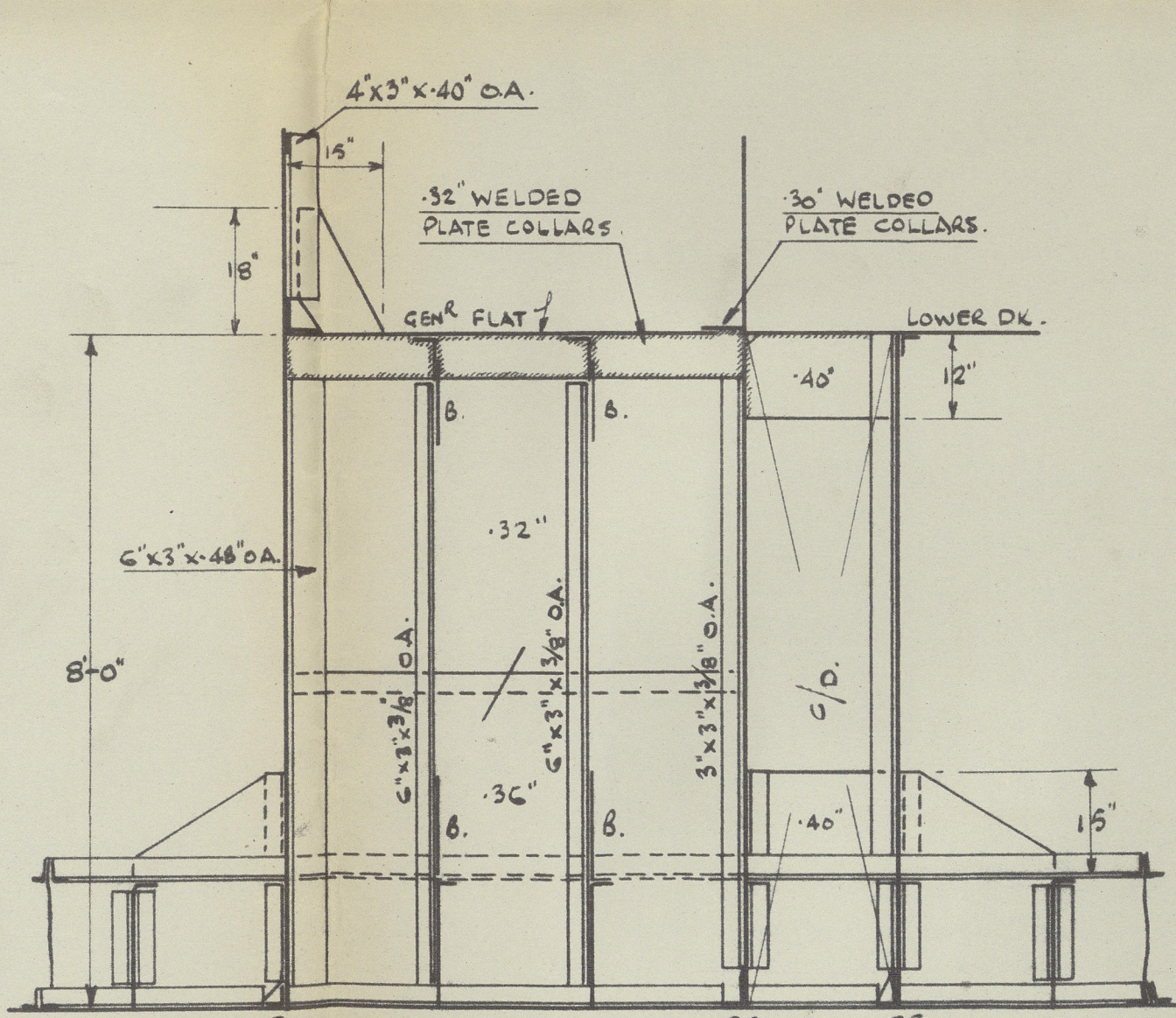
FRAME SPACING: - 22"



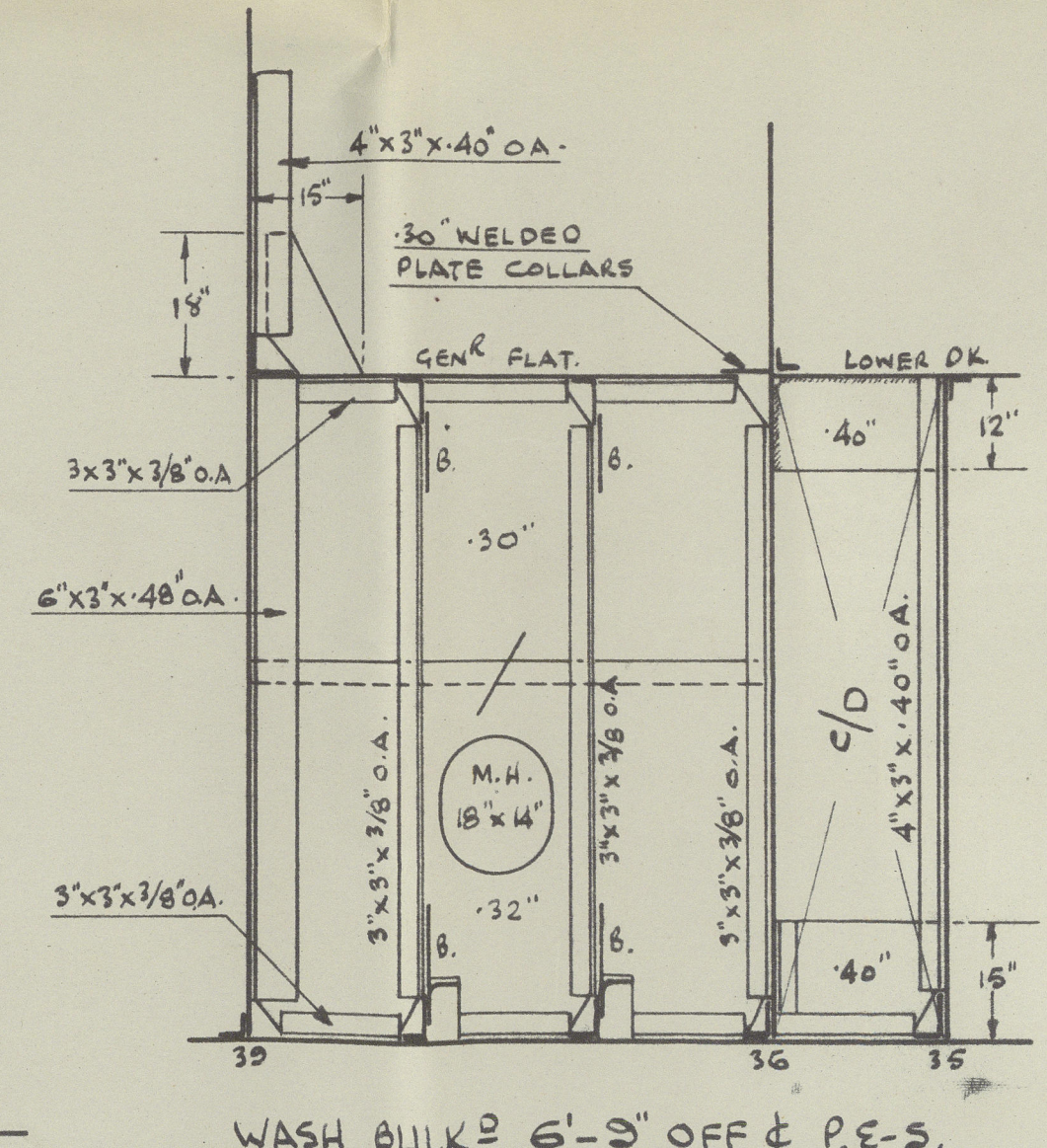
O.T. & W.T. BULKHEAD 52.
O.T. IN WAY OF BUNKERS.
LOOKING FORWARD.



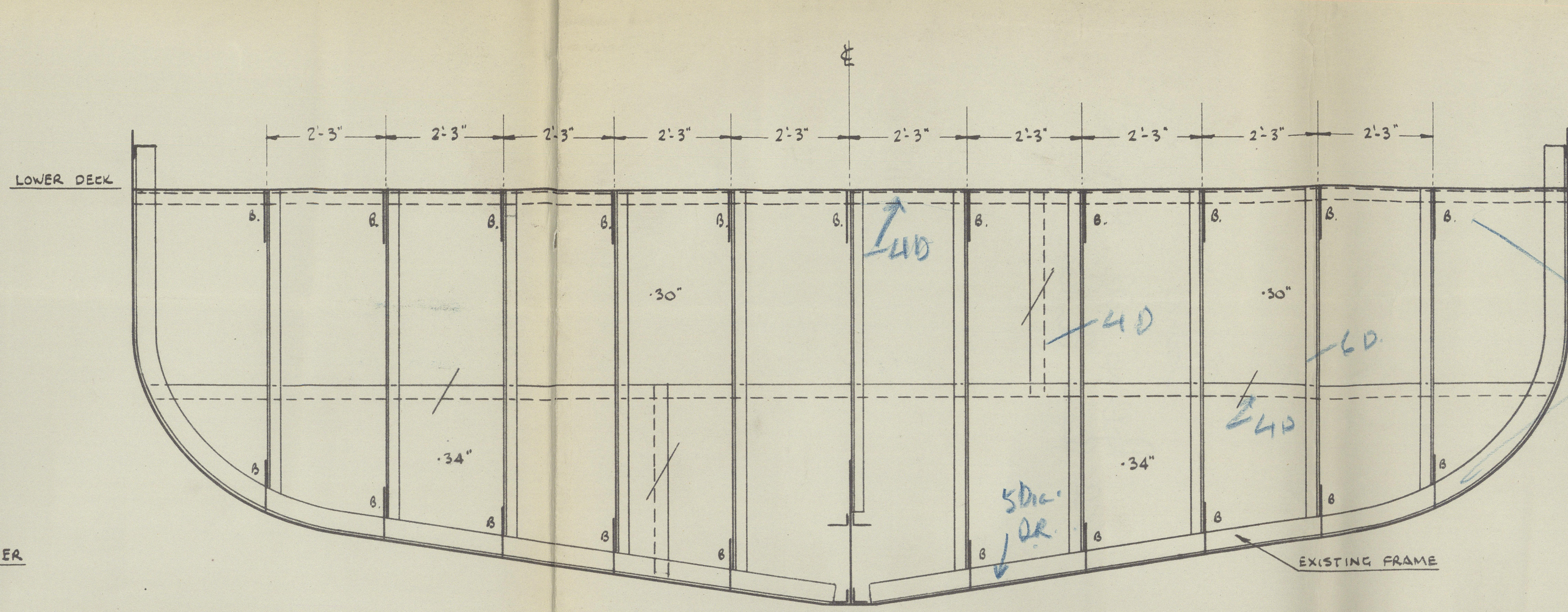
O.T. DIVISIONAL BULKHEAD
(ON FRAME 45).
DRAWN FOR PORT SIDE, LOOKING FWD.
STARBOARD SIDE SIMILAR.



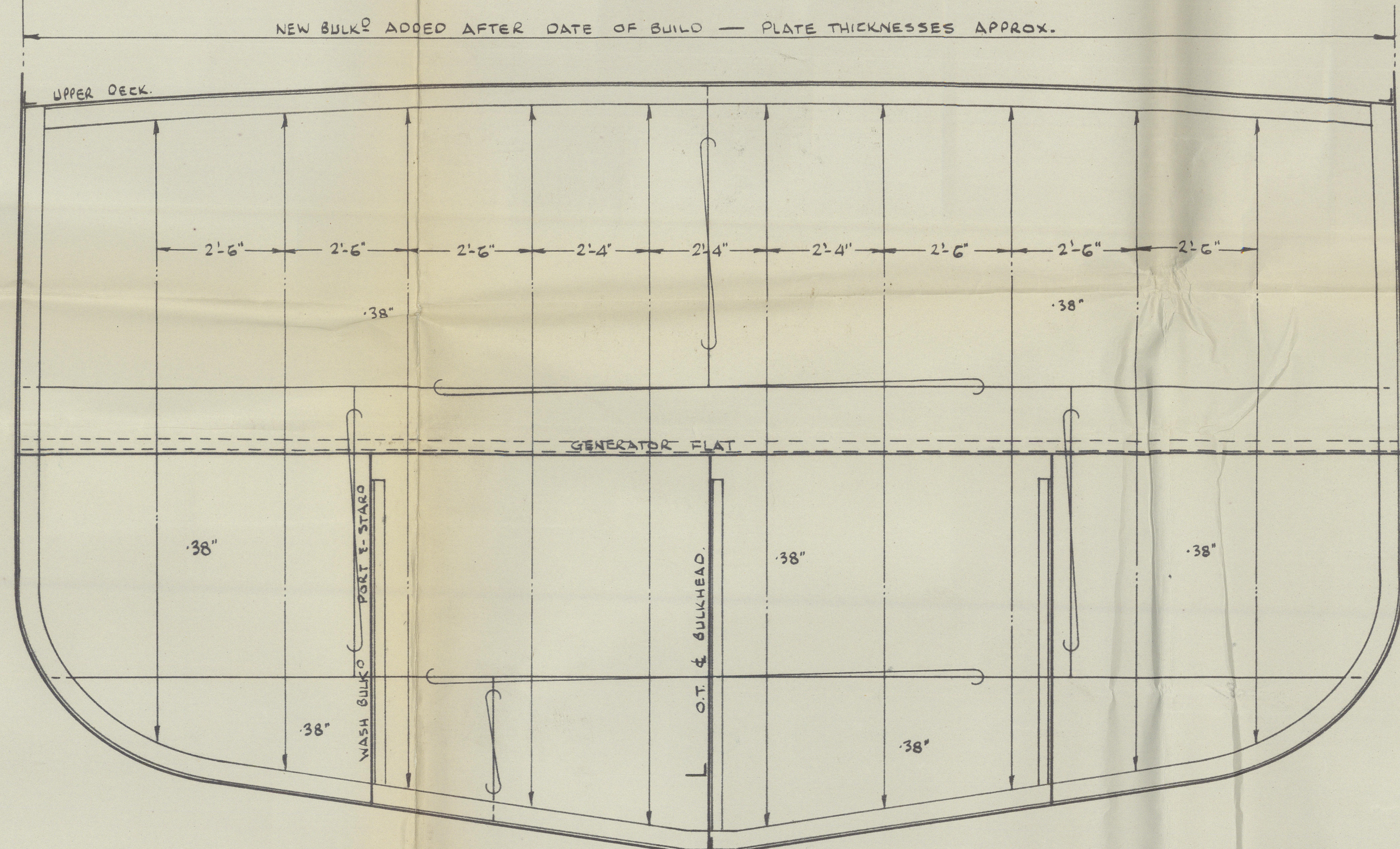
O.T. DIVISIONAL BULKHEAD
LOOKING TO PORT.



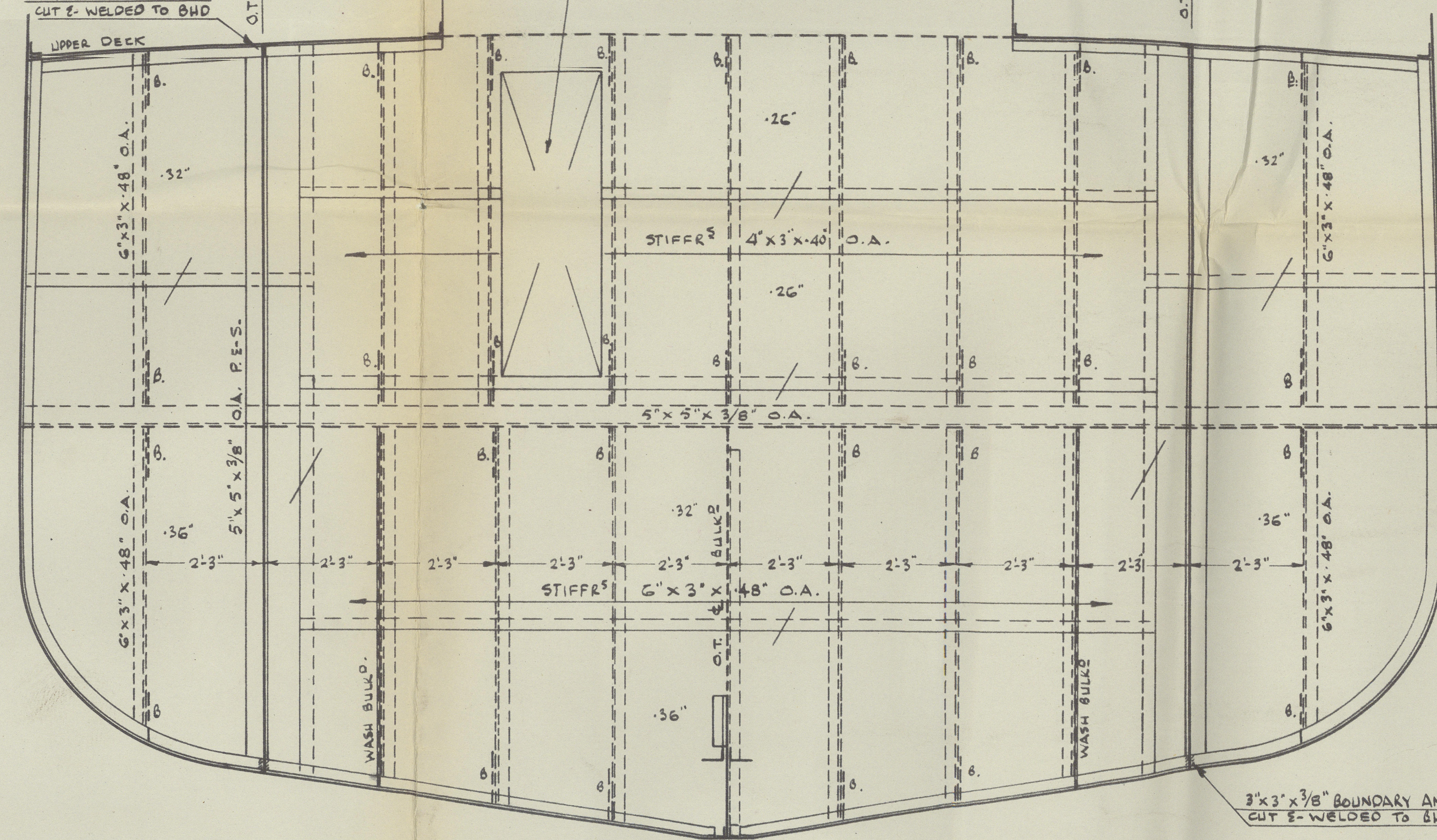
WASH BULKHEAD 6'-3" OFF & P.E.S.
DRAWN FOR PORT SIDE LOOKING TO PORT.
STARBOARD SIDE SIMILAR.



W.T. COFFERDAM BHD 35.
LOOKING FORWARD.
STIFFENERS - 4" x 3" x 40" O.A.



BULKHEAD 36.
O.T. BELOW GENERATOR FLAT.
LOOKING FORWARD.
STIFFERS - 3 1/2" x 3 1/2" O.A. WELDED TOE ON.
with 4 1/2" x 3 1/2" flat to athwartship flange
from bottom to generator flat.
STEEL DOOR OPENING AFT TO BE ARRANGED
AT SHIP FOR ACCESS TO GEN. FLAT.
CLEAR OPENING TO BE APPROX. - 6'-0" x 1'-10"



BULKHEAD 39.
O.T. IN WAY OF BUNKERS.
LOOKING FORWARD.

APPROVED
LLOYD'S REGISTER OF SHIPPING
UNITED KINGDOM
THE LLOYD'S CO-OPERATION REGISTER
Date 24/11/52

OXNA

O.F.C

BUNKERS

010096-010102-0206



© 2021

Lloyd's Register
Foundation

"
Graha
"

Rpt. NO. GB. 80402
Oil Fuel bunkers



© 2021

010096-010102-0206

Lloyd's Register
Foundation