

SS "TAIKOO WAN YI" — MIDSHIP SECTION.

DIMENSIONS 331'-0" S.P. x 46'-6" MLO x 25'-6" MLD.

SCALE $\frac{1}{2}$ " = 1' 00".

CLASS B.S. * BRITISH CORPORATION.

RULE EQUIPMENT

NUMERAL	DESCRIPTION	QUANTITY
1	POOP 30' 0"	1
2	BRIDGE 100' 0"	1
3	FORECASTLE 30' 0"	1
4	FORECASTLE 30' 0"	1
5	FORECASTLE 30' 0"	1
6	FORECASTLE 30' 0"	1
7	FORECASTLE 30' 0"	1
8	FORECASTLE 30' 0"	1
9	FORECASTLE 30' 0"	1
10	FORECASTLE 30' 0"	1
11	FORECASTLE 30' 0"	1
12	FORECASTLE 30' 0"	1
13	FORECASTLE 30' 0"	1
14	FORECASTLE 30' 0"	1
15	FORECASTLE 30' 0"	1
16	FORECASTLE 30' 0"	1
17	FORECASTLE 30' 0"	1
18	FORECASTLE 30' 0"	1
19	FORECASTLE 30' 0"	1
20	FORECASTLE 30' 0"	1
21	FORECASTLE 30' 0"	1
22	FORECASTLE 30' 0"	1
23	FORECASTLE 30' 0"	1
24	FORECASTLE 30' 0"	1
25	FORECASTLE 30' 0"	1
26	FORECASTLE 30' 0"	1
27	FORECASTLE 30' 0"	1
28	FORECASTLE 30' 0"	1
29	FORECASTLE 30' 0"	1
30	FORECASTLE 30' 0"	1
31	FORECASTLE 30' 0"	1
32	FORECASTLE 30' 0"	1
33	FORECASTLE 30' 0"	1
34	FORECASTLE 30' 0"	1
35	FORECASTLE 30' 0"	1
36	FORECASTLE 30' 0"	1
37	FORECASTLE 30' 0"	1
38	FORECASTLE 30' 0"	1
39	FORECASTLE 30' 0"	1
40	FORECASTLE 30' 0"	1
41	FORECASTLE 30' 0"	1
42	FORECASTLE 30' 0"	1
43	FORECASTLE 30' 0"	1
44	FORECASTLE 30' 0"	1
45	FORECASTLE 30' 0"	1
46	FORECASTLE 30' 0"	1
47	FORECASTLE 30' 0"	1
48	FORECASTLE 30' 0"	1
49	FORECASTLE 30' 0"	1
50	FORECASTLE 30' 0"	1
51	FORECASTLE 30' 0"	1
52	FORECASTLE 30' 0"	1
53	FORECASTLE 30' 0"	1
54	FORECASTLE 30' 0"	1
55	FORECASTLE 30' 0"	1
56	FORECASTLE 30' 0"	1
57	FORECASTLE 30' 0"	1
58	FORECASTLE 30' 0"	1
59	FORECASTLE 30' 0"	1
60	FORECASTLE 30' 0"	1
61	FORECASTLE 30' 0"	1
62	FORECASTLE 30' 0"	1
63	FORECASTLE 30' 0"	1
64	FORECASTLE 30' 0"	1
65	FORECASTLE 30' 0"	1
66	FORECASTLE 30' 0"	1
67	FORECASTLE 30' 0"	1
68	FORECASTLE 30' 0"	1
69	FORECASTLE 30' 0"	1
70	FORECASTLE 30' 0"	1
71	FORECASTLE 30' 0"	1
72	FORECASTLE 30' 0"	1
73	FORECASTLE 30' 0"	1
74	FORECASTLE 30' 0"	1
75	FORECASTLE 30' 0"	1
76	FORECASTLE 30' 0"	1
77	FORECASTLE 30' 0"	1
78	FORECASTLE 30' 0"	1
79	FORECASTLE 30' 0"	1
80	FORECASTLE 30' 0"	1
81	FORECASTLE 30' 0"	1
82	FORECASTLE 30' 0"	1
83	FORECASTLE 30' 0"	1
84	FORECASTLE 30' 0"	1
85	FORECASTLE 30' 0"	1
86	FORECASTLE 30' 0"	1
87	FORECASTLE 30' 0"	1
88	FORECASTLE 30' 0"	1
89	FORECASTLE 30' 0"	1
90	FORECASTLE 30' 0"	1
91	FORECASTLE 30' 0"	1
92	FORECASTLE 30' 0"	1
93	FORECASTLE 30' 0"	1
94	FORECASTLE 30' 0"	1
95	FORECASTLE 30' 0"	1
96	FORECASTLE 30' 0"	1
97	FORECASTLE 30' 0"	1
98	FORECASTLE 30' 0"	1
99	FORECASTLE 30' 0"	1
100	FORECASTLE 30' 0"	1

2 BOWERS	ANCHORS	45 CHRS	END	STOCKLESS
1	38	38		
1	STEAM	12		5" STOCK
1	KEGGE	35		
20	FATHOMS	1 1/2	STUD CHAIN CABLE	
20		4 1/2	STEEL WIRE	
100		4		
2 @ 30	FATHOMS	7	HANDERS	WIRE
2 @ 30		0		

NUMERALS

BREADTH MLD	46'-6" FT
DEPTH	25'-6"
LENGTH	331'-0"
LOVE NO	23872 0
TO UPPER DECK	12 98
TO BRIDGE DECK	10 03

K BULWARK

25' TACK
24' 0" 3' 40' 8A
STAYS 75' 32' 85

J OUT 66' WIDE

80' TO 42' TACK
80' IN WAY OF BRIDGE
DOUBLE AT BRIDGE ENDS
BUTTS TEESLE RIVETED
WHERE OVER 60' TACK
BUTTS TEESLE RIVETED ALL FORTH
AND IN WAY OF BRIDGE

H IN 72' WIDE

80' TO 42' TACK
80' IN WAY OF BRIDGE
BUTTS TEESLE RIVETED ALL FORTH
AND AFT

G OUT 72' WIDE

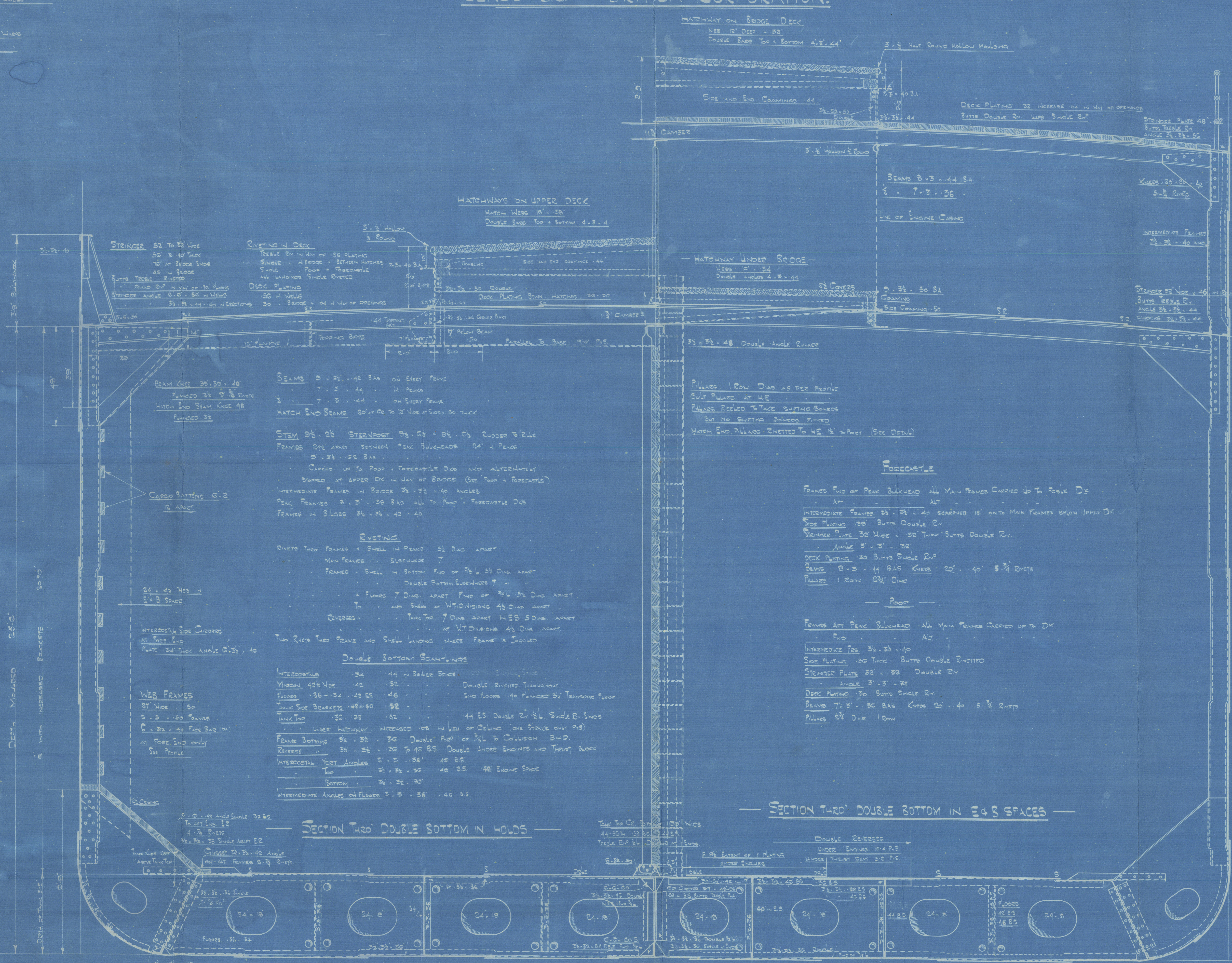
80' TO 42' TACK
BUTTS TEESLE RIVETED ALL FORTH
AND AFT

F IN 72' WIDE

80' TO 42' TACK
BUTTS TEESLE RIVETED ALL FORTH
AND AFT

E OUT

80' TO 42' TACK
BUTTS TEESLE RIVETED

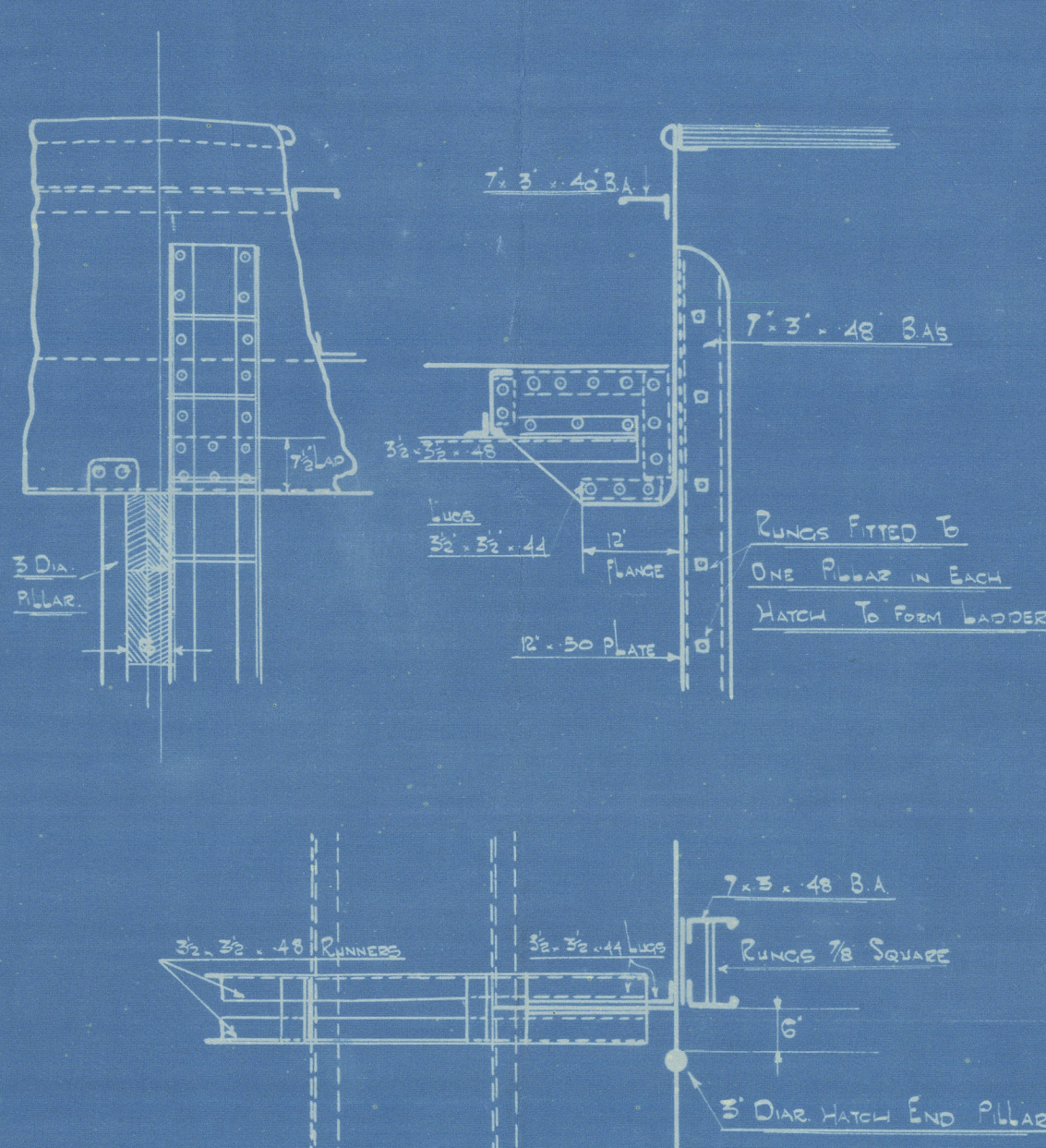


SECTION TWO' DOUBLE BOTTOM IN HOLDS

SECTION THREE' DOUBLE BOTTOM IN 24' SPACES

DETAIL OF HATCH END PLATES

SCALE $\frac{1}{2}$ " = 1' 00"



Blue Keel
3' 0" 45' ANGLE
10' 50' BOW PLATE

D IN 66' WIDE
80' TO 42' TACK
BUTTS TEESLE RIVETED

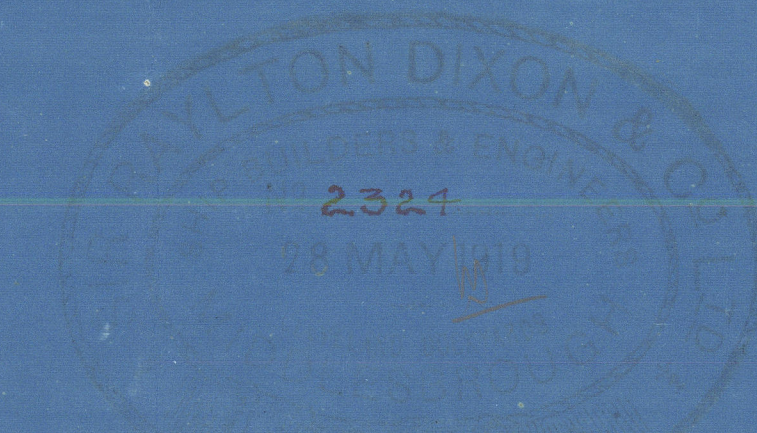
C OUT 66' WIDE
80' TO 42' TACK
BUTTS TEESLE RIVETED

B IN 66' WIDE
80' TO 42' TACK
BUTTS TEESLE RIVETED

A OUT 66' WIDE
80' TO 42' TACK
BUTTS TEESLE RIVETED

KEEL IN 45' WIDE
80' TO 42' TACK
BUTTS TEESLE RIVETED

A, B, & C STRAKES TO MAINWATER MOUTH THROUGHHOLES TOP TO COLLISION BULK
ADDITIONAL CIRCLES UNDER ENGINES & END OF 35' LENGTH



Drawn by Rayen Dun 602

N° 617

MIDSHIP SECTION

(as built)

S.S. TAIKOO WAN Y.

Draw. Rpt. N° 10410.

