

Lloyd's Register of Shipping.

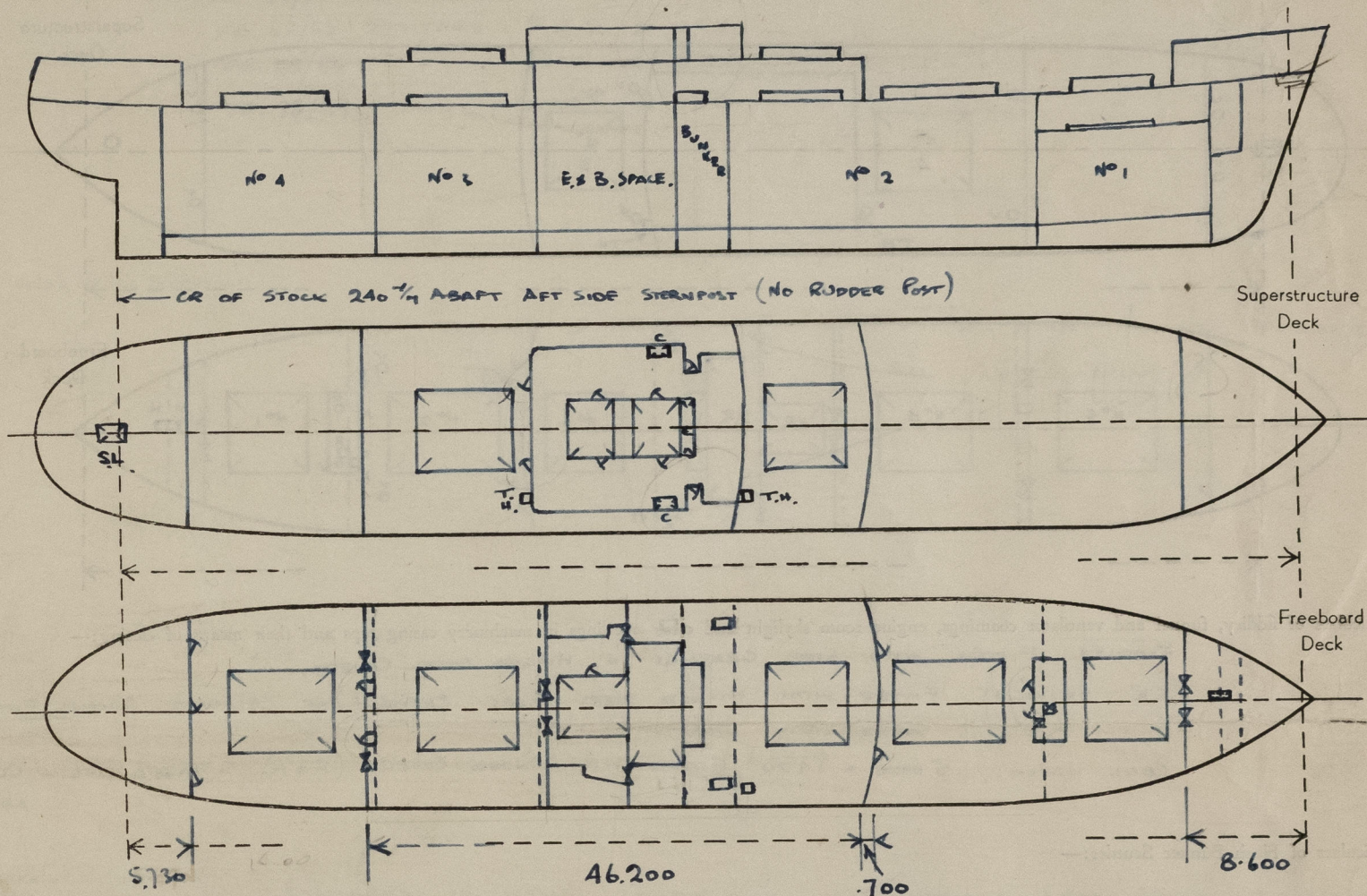
SURVEYS FOR FREEBOARD.

(CONDITIONS OF ASSIGNMENT.)

 Index No.
 (For London Office only.)

Ship's Name FUJI MARU Port of Survey YOKOHAMA
 Official Number 63992 Surveyor's Signature [Signature]
 Nationality and Port of Registry JAPAN TOKYO Date of Survey 4th MAY 1950

Disposition and dimensions of superstructures, trunks, deckhouses and machinery casings to be inserted in the diagrams and tabular statement:—



Particulars of Superstructures, Trunks, Casings, Deckhouses.

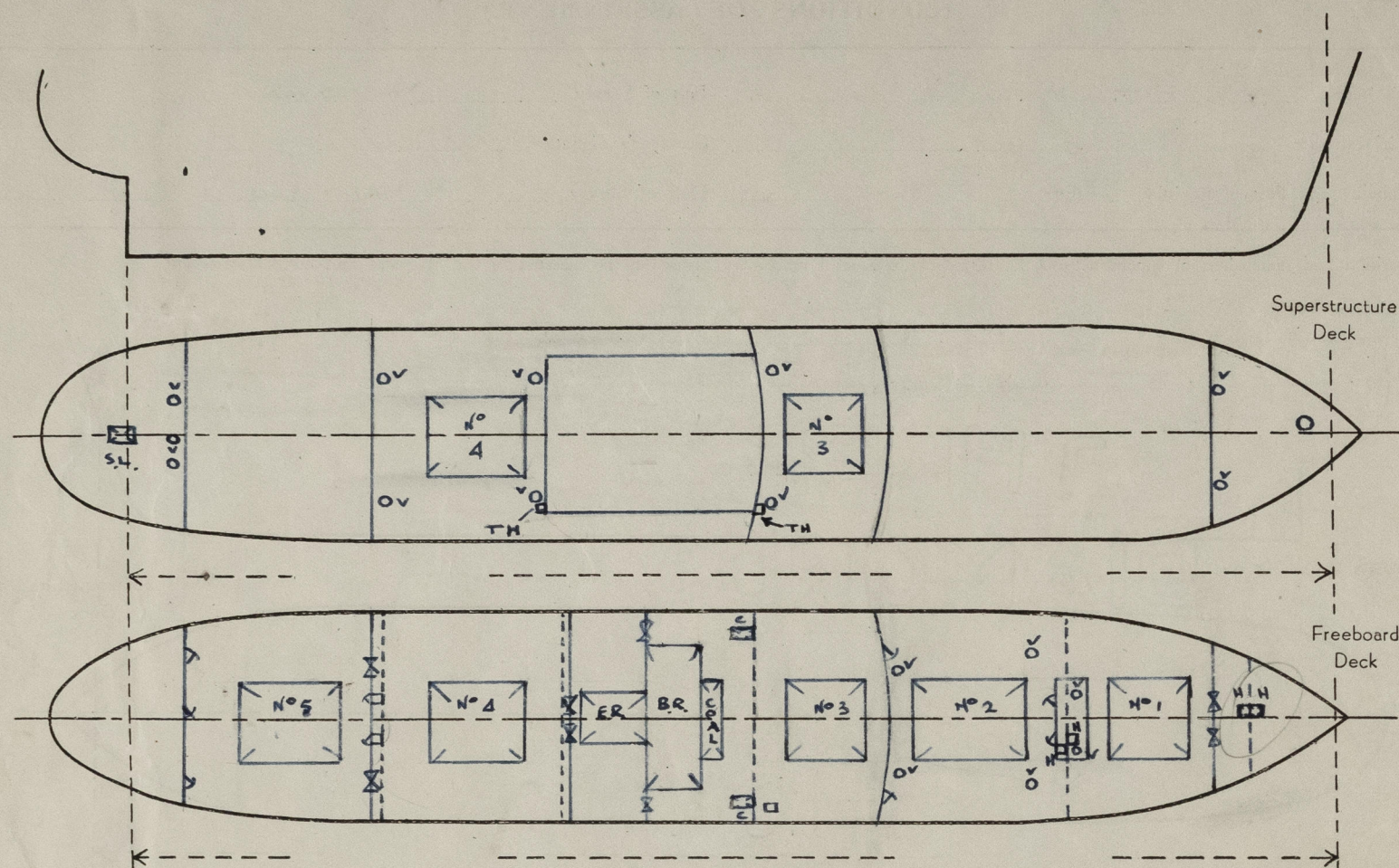
	Coaming	Plating	Stiffeners	Spacing	End Attachments of Stiffeners	Size of Openings	Height of Sills	Height of Casings
Poop Bulkhead ...	✓	9 ✓	125 x 75 x 10.1	725 ✓	BKT. T & B. ✓	3 @ 1620 x 820 ✓	340 ✓	2150
Raised Quarter Deck Bulkhead ...	✓							
Bridge, After Bulkhead ...	✓	7 ✓	75 x 75 x 9.2 ✓	575 MAX ✓	NONE ✓	2 @ 1320 x 570 2 @ 1500 x 910 ✓	340 ✓	2400
Bridge, Forward Bulkhead ...	✓	12 ✓	230 x 90 x 11 BA ✓	700 MAX. ✓	LOG TOP BKT BOTTOM ✓	2 @ 1500 x 900 ✓	380 ✓	"
Forecastle Bulkhead ...	✓	7 ✓	75 x 75 x 9.1 ✓	750 MAX ✓	NONE ✓	2 @ 1500 x 910 ✓	380 ✓	2100
Trunk, Aft ...	✓							
Trunk, Forward ...	✓							
Exposed Machinery Casings on Freeboard or Raised Quarter Decks ...	✓							
Exposed Machinery Casings on Superstructure Decks ...	✓							
Machinery Casings within Superstructures not fitted with Class I Closing Appliances ...	10 ✓	7 ✓	90 x 9 F.B. ✓	700 ✓	CONTINUOUS ✓	1 @ 1500 x 820 P.SIDE ✓	340 ✓	2400
Deckhouses on Flush Deck Ships ...	✓							

Particulars of Closing Appliances (state if capable of being manipulated from both sides).

Poop Bulkhead ...	HINGED STEEL W.T. DOORS MANIPULATED FROM BOTH SIDES ✓
Raised Quarter Deck Bulkhead ...	2 STEEL HINGED W.T. DOORS MANIPULATED FROM BOTH SIDES (TO EXPANSION TRUNK) ✓
Bridge, After Bulkhead ...	2 STORM BOARDS IN CHANNELS RIVETED TO BULKHEAD ✓
Bridge, Forward Bulkhead ...	HINGED STEEL W.T. DOORS MANIPULATED FROM BOTH SIDES ✓
Forecastle Bulkhead ...	STORM BOARDS IN CHANNELS RIVETED TO BULKHEAD ✓
Exposed Machinery Casings on Freeboard or Raised Quarter Decks ...	✓
Exposed Machinery Casings on Superstructure Decks ...	✓
Machinery Casings within Superstructures not fitted with Class I Closing Appliances ...	✓
Deckhouses on Flush Deck Ships ...	MAST HOUSES FITTED WITH HINGED STEEL W.T. DOORS, MANIPULATED FROM BOTH SIDES ✓

PARTICULARS OF PROTECTION TO OPENINGS, ETC.

The following diagrams should be used to indicate the positions of cargo and coaling hatchways, gangway, cargo and coaling ports, ventilators, companionways, etc., which would affect the seaworthiness of the ship:—



Particulars of fiddle, funnel and ventilator coamings, engine room skylight and other openings in machinery casing tops and their means of closing:—

FIDDLEY FITTED WITH STEEL GRATINGS & HINGED STEEL COVERS. ✓

E.R. SKYLIGHT FITTED WITH HINGED STEEL FLAPS CAPABLE OF SECURING. LIGHTS FITTED. ✓

VENT. COAMINGS ADEQUATELY STAYED. ✓

COAL HATCH. 5000 x 1400 FITTED WITH WOOD COVERS (F&A) 2 TARPULINS - CLEATS 24" APART (MAX) ✓

Particulars of Flush Bunker Scuttles:—

Particulars of Companionways:—

MAST HOUSES FORE WELL - ACCESS TO NO. 1 & 2 HOLDS ✓
FITTED WITH STEEL W.T. DOORS CAPABLE OF
MANIPULATION FROM BOTH SIDES. COAMINGS 6/0 28 1/4 ✓

Particulars of Ventilators in exposed positions on freeboard and superstructure decks:—

VENT. COAMINGS ON FREEBOARD DECK 36" HIGH - FITTED WITH WOOD PLUGS & CANVAS COVERS. ✓ (MIN")

VENT. COAMINGS ON SUPERSTRUCTURE DK 18" HIGH - FITTED WITH WOOD PLUGS & CANVAS COVERS. ✓ (MIN")

Particulars of Air Pipes in exposed positions on freeboard, raised quarter, or superstructure decks:—

AIR PIPES ON FREEBOARD DK - 36" MIN - CLOSED WITH WOOD PLUGS & CANVAS COVERS ✓

AIR PIPES ON SUPERSTRUCTURE DK - 18" MIN - CLOSED WITH WOOD PLUGS & CANVAS COVERS ✓

Particulars of Gangway Cargo and Coaling Ports:—

Particulars of Scuppers and Sanitary Discharge Pipes:—

BRIDGE SPACE FITTED WITH 6-2" SCUPPERS P.S. LEADING TO BILGE AND CONTROLLED BY GEARING TO BRIDGE DECK. and fitted with open/shut indicators ✓
POOP SPACE FITTED WITH 2" SCUPPER LEADING OVERBOARD P.S. N.R.V. FITTED ✓

FR. 48/49. GALLEY P.S. - 3" N.R.V. - OPENING BELOW FREEBOARD DK. ✓
FR. 52/53 REFRIG. STAGE 2" N.R.V. - " " " " ✓
FR. 62/63 SANITARY P.S. 3" N.R.V. - " " " " ✓
FR. 65/66 " PORT. 6" N.R.V. - " " " " ✓
FR. 78/79 " STARBOARD 2" N.R.V. - " " " " ✓

Particulars of Side Scuttles:—

IN. POOP, BRIDGE & FREECASTLE - FITTED WITH HINGED DEADLIGHTS. ✓
(4) (5) (6) ALL 250 1/4 DIA. ✓

Vertical distance of Sill of lowest Side Scuttle above top of keel. 8.600 M.

Particulars of Guard Rails:—

BULWARKS IN WELLS. 1.000 M HIGH. STANCHIONS 1.400 M APART PLATING 7 1/4. ✓
RAILS ON BRIDGE DK " ✓

Particulars of Gangways, Lifelines, etc.:—

FITTED IN WELLS - OF MANILLA 28 1/4 DIA. ✓

Particulars of Freeing Arrangements.

	Length of Bulwark	Height of Bulwark	Size of Freeing Ports	Number each side	Area each side	Rule area each side
After Well	14.000	1.000	820 x 230	6	1.040 ✓	1.031 ✓
Forward Well	30.100	1.000	860 x 230	10	1.915 ✓	1.829 ✓ 1.825

State position of each freeing port { After Well :- 3.500 . 6.300 . 9.100
(F. and A. position and height above deck edge) { Forward Well :- 4.900 . 7.700 . 13.300 . 17.500 . 23.100 (300)

State whether the freeing ports are fitted with shutters, bars, or rails, and give particulars of such:— OPEN ✓

Additional area where sheer is less than standard.

PARTICULARS OF PROTECTION TO OPENINGS, ETC.

HATCHWAYS ON FREEBOARD AND SUPERSTRUCTURE DECKS.												
FREEBOARD DECK												
Description of Hatchway	N° 1.	N° 2	N° 3 (IN BRIDGE)	N° 4	N° 5	N° 3	N° 4	FILE.	BRIDGE	COAL HATCHES		
Dimensions of Hatchway	8400 x 6000	11900 x 6500	6300 x 6500	8400 x 6500	9100 x 6000	6300 x 6500	8400 x 6500	500 1/4 DIA.	TRIM HATCH (STARBOARD SIDE) 15' 2 1/4 x 5' 4 1/2	2025 x 6500	2025 x 1290	1 PERS.
COAMINGS	Height above Deck	1000 ✓	1000 ✓	300 ✓	300 ✓	1000 ✓	600 ✓	426 1/4 ✓	456 1/4 ✓	300 ✓	300 ✓	
	Thickness	12 1/4 ✓	18 1/4 x 75 x 9.5 BA ✓	14 1/2 ✓	14 1/2 ✓	As No 12 ✓	14 1/2 ✓	10 1/4 ✓	10 1/4 ✓	12 ✓	12 ✓	
	Stiffeners	12 1/4 ✓	12 1/4 Bx 75 90 1/4 FL ✓	14 1/2 ✓	14 1/2 ✓	As No 12 ✓	14 1/2 ✓	10 1/4 ✓	10 1/4 ✓	12 ✓	12 ✓	
	Brackets, Stays	Ends 2 ✓ SIDES 3 ✓	4 ✓ 3 ✓	✓	✓	3 ✓ 3 ✓	4 ✓ 3 ✓	✓	✓	✓	✓	
HATCH BEAMS	Number	5 ✓	7 ✓	3 ✓	5 ✓	5 ✓	3 ✓					
	Spacing	1400 ✓	1488 ✓	1575 ✓	1400 ✓	1517 ✓	1575 ✓					
	Scantling and Sketch	16 x 250 500 x 9 1/4 ✓ 16 x 250	As No 12 ✓	As No 12 ✓	As No 12 ✓	As No 12 ✓	14 x 200 400 x 9 1/4 ✓ 14 x 200 ✓					
	Bearing Surface	SLIDES ✓	.do. ✓	.do. ✓	.do. ✓	SLIDES ✓	.do. ✓					
FORE AND AFTERS	Number											
	Spacing											
	Unsupported Lengths											
	Scantling* and Sketch											
	Bearing Surface											
HATCH COVERS	Material	WOOD	.do.	.do.	.do.	.do.	.do.	STEEL	STEEL	WOOD	WOOD	
	Thickness	65	65	65	65	65	65	HINGED	HINGED	90	90	
	How fitted	F & A	.do.	.do.	.do.	.do.	.do.	FITTED WITH	FITTED WITH	F & A	ATTACHED	
	Bearing Surface	90.	.do.	.do.	.do.	.do.	.do.	TOGGLES.	WITH TOGGLES.	90	90	
Spacing of Cleats	MAX 24" APART.			.do.	.do.	.do.	.do.			.do.	.do.	
Number of Tarpaulins	2	.do. ✓	.do. ✓	.do. ✓	.do. ✓	.do. ✓	.do. ✓			1	1	
*Are wood fore and afters steel shod at all bearing surfaces? ✓ Are battens and wedges efficient and in good condition? YES ✓ Are tarpaulins in good condition and in accordance with rule requirements? YES ✓ Are lashings provided in accordance with rule requirements? YES ✓												

Particulars of any special features:— THIS VESSEL WAS BUILT IN JULY 1949 TO N.K. CLASS AND THE FOLLOWING FREEBOARDS HAVE BEEN ASSIGNED BY THE J.G. (JAP. GOVERNMENT) L.R. FREEBOARD HAS NOW BEEN REQUESTED.

SUMMER FREE⁸² CR. OF DISK TO TOP OF STEEL DECK — 1213 1/4
 TROPICAL F.W. — 289 1/4 ABOVE
 F.W. — 147 1/4
 TROPICAL — 142 1/4
 WINTER — 142 1/4 BELOW.

A PROVISIONAL L.L. CERT. HAS BEEN ISSUED IN ACCORDANCE WITH THE DIMENSIONS INDICATED ABOVE. COPY OF PROVISIONAL CERT. & FREEBOARD VERIFICATION FORM ARE ATTACHED

CLASS 100 A1 IS CONTEMPLATED.

Trimming hatch within Bridge. 530 x 500 m/m x 240 m/m long. - hinged steel W.T. covers.
 Hatch within File. 3 off. 530 x 500 m/m x 240 m/m long " " " "
 Coal-hatch on Boat Deck. 5000 m/m x 1400 m/m. 400 m/m long. 65 m/m wood covers and foundations.
 2 off. Hinge. 1400 m/m x 1000 m/m " " " " " " " "



© 2021

Lloyd's Register Foundation