

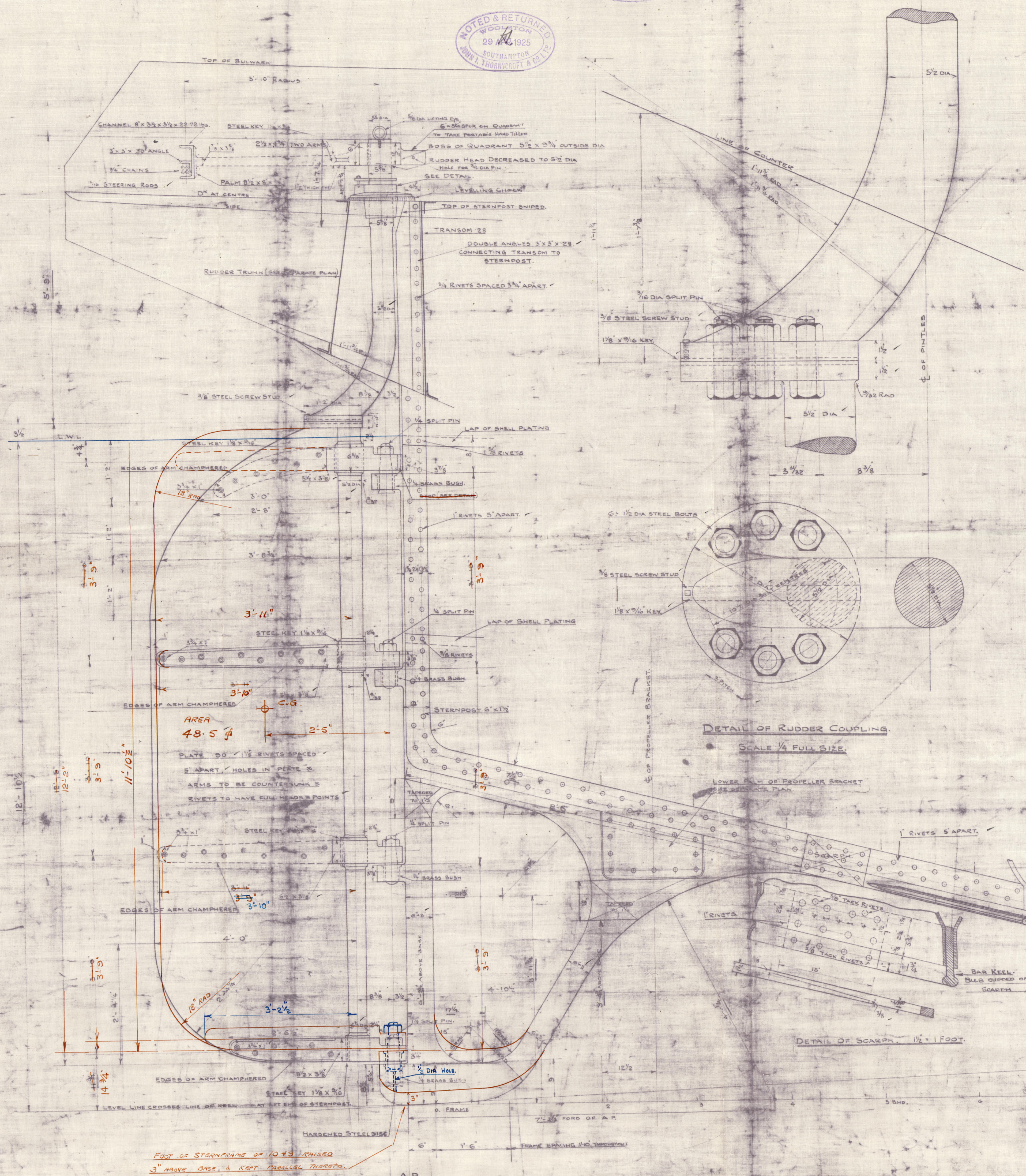
# STERNFRAME & RUDDER

1 OFF COMPLETE FORGED STEEL (TO LLOYDS TESTS)

SCALE 1" = 1 FOOT & AS MARKED.

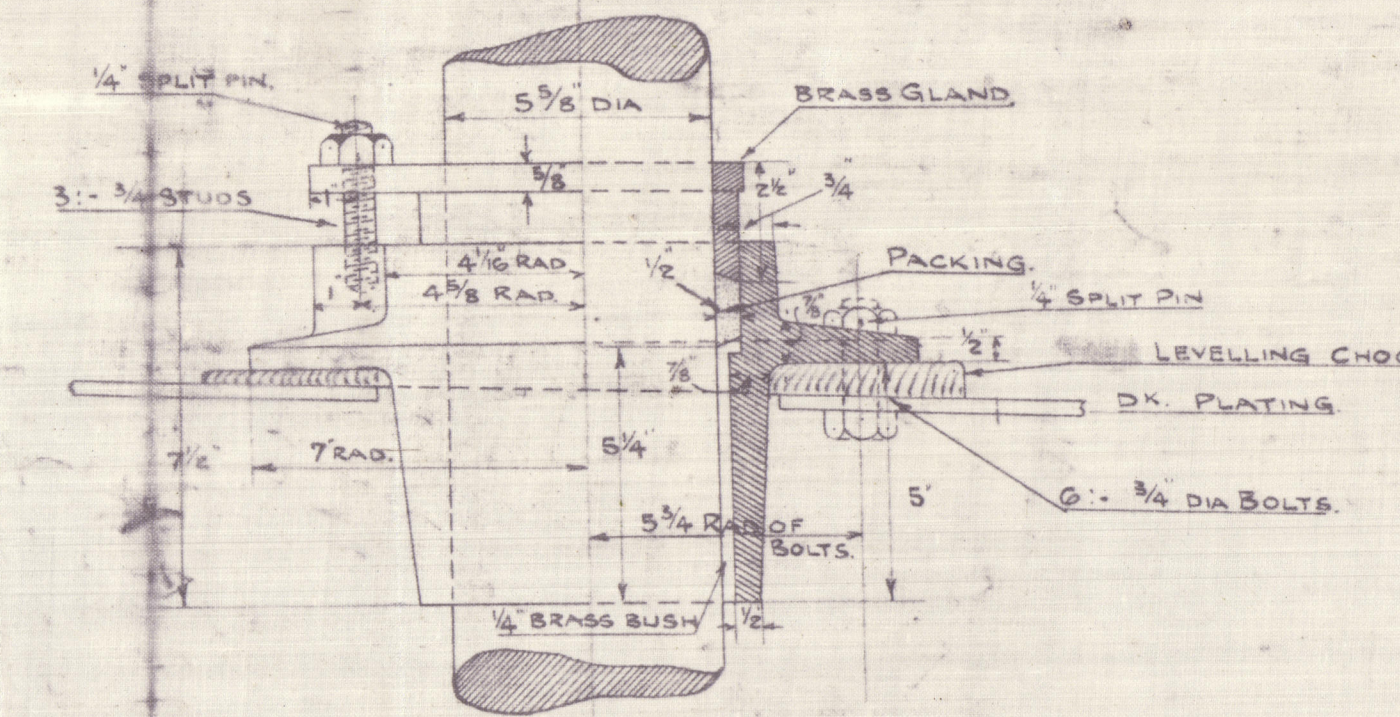
MODIFIED IN BROWN FOR N°1049.

SPEED OF SHIP: 11 1/2 KNOTS.  
AREA OF RUDDER 48.5 SQ. FEET.  
CENTRE OF GRAVITY OF RUDDER AREA MEASURED ABAFT C  
OF PINTLES 2.41 FEET.  
A X D 117  
NOTE: RUDDER ARMS TO BE SHRUNK ON AND KEVED TO MAIN PIECE.

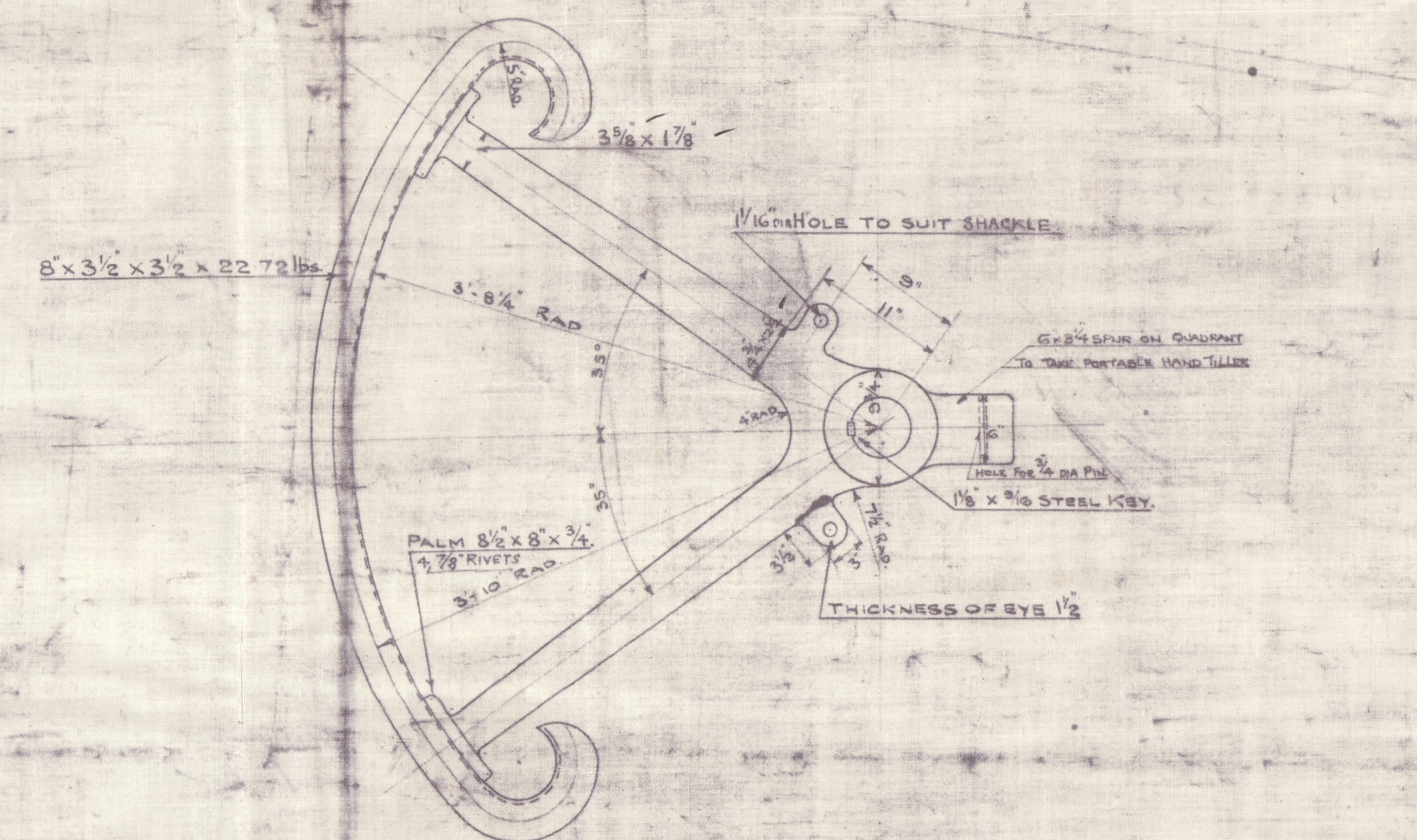


DETAIL OF RUDDER COUPLING.  
SCALE 1/4 FULL SIZE.

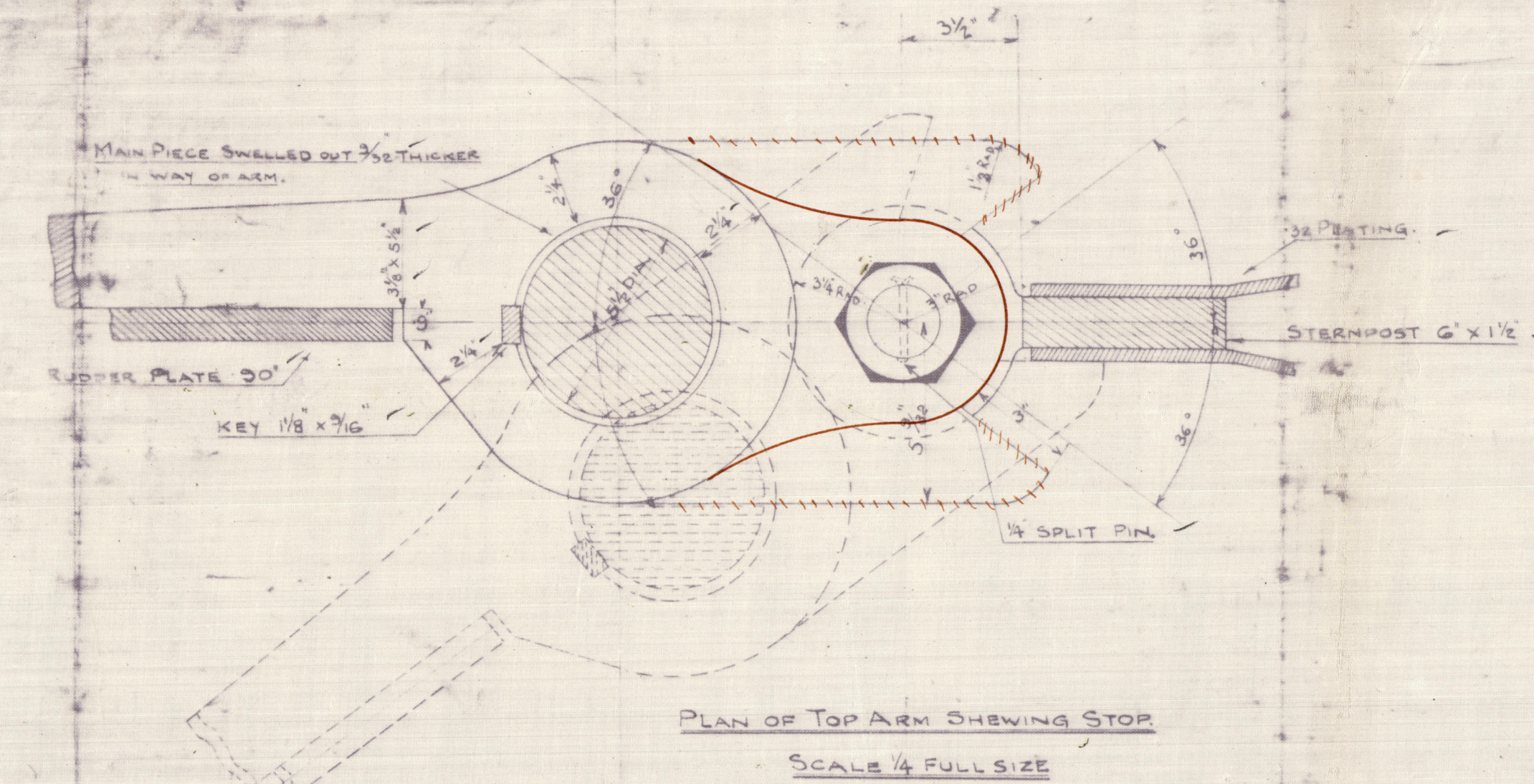
DETAIL OF SCARF JOINT. 1/2" = 1 FOOT.



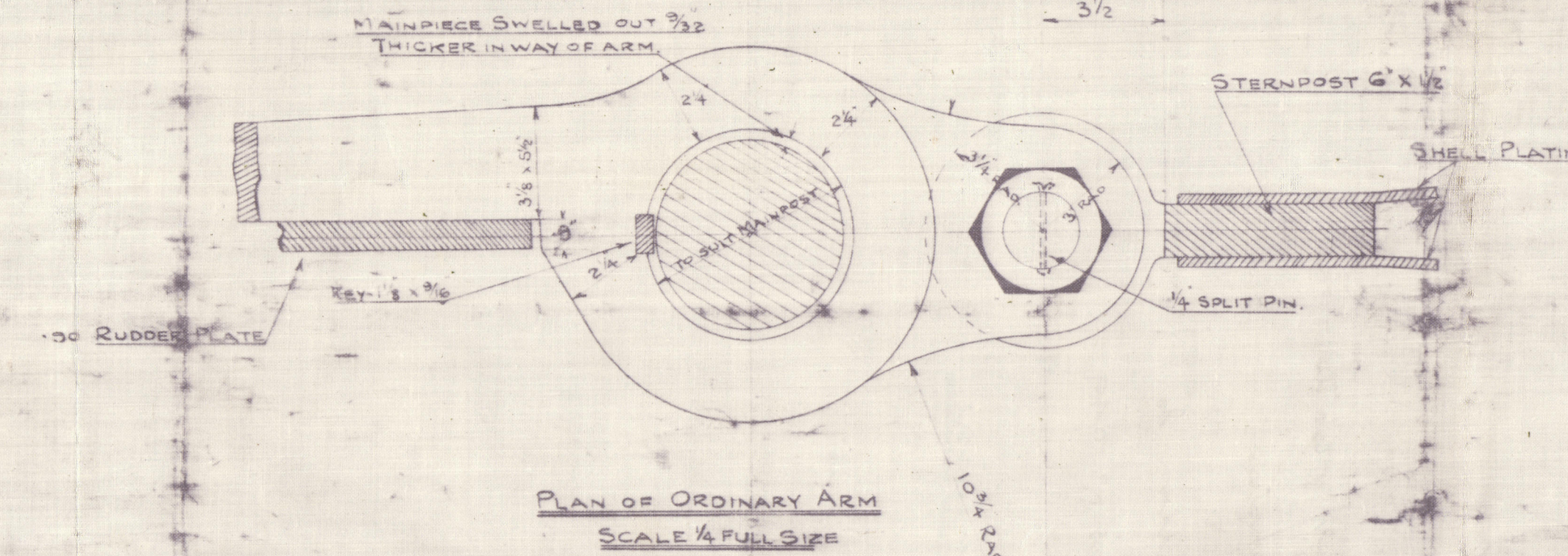
DETAIL OF CAST IRON STUFFING BOX & BRASS GLAND 1 OFF  
SCALE 1/4 FULL SIZE.



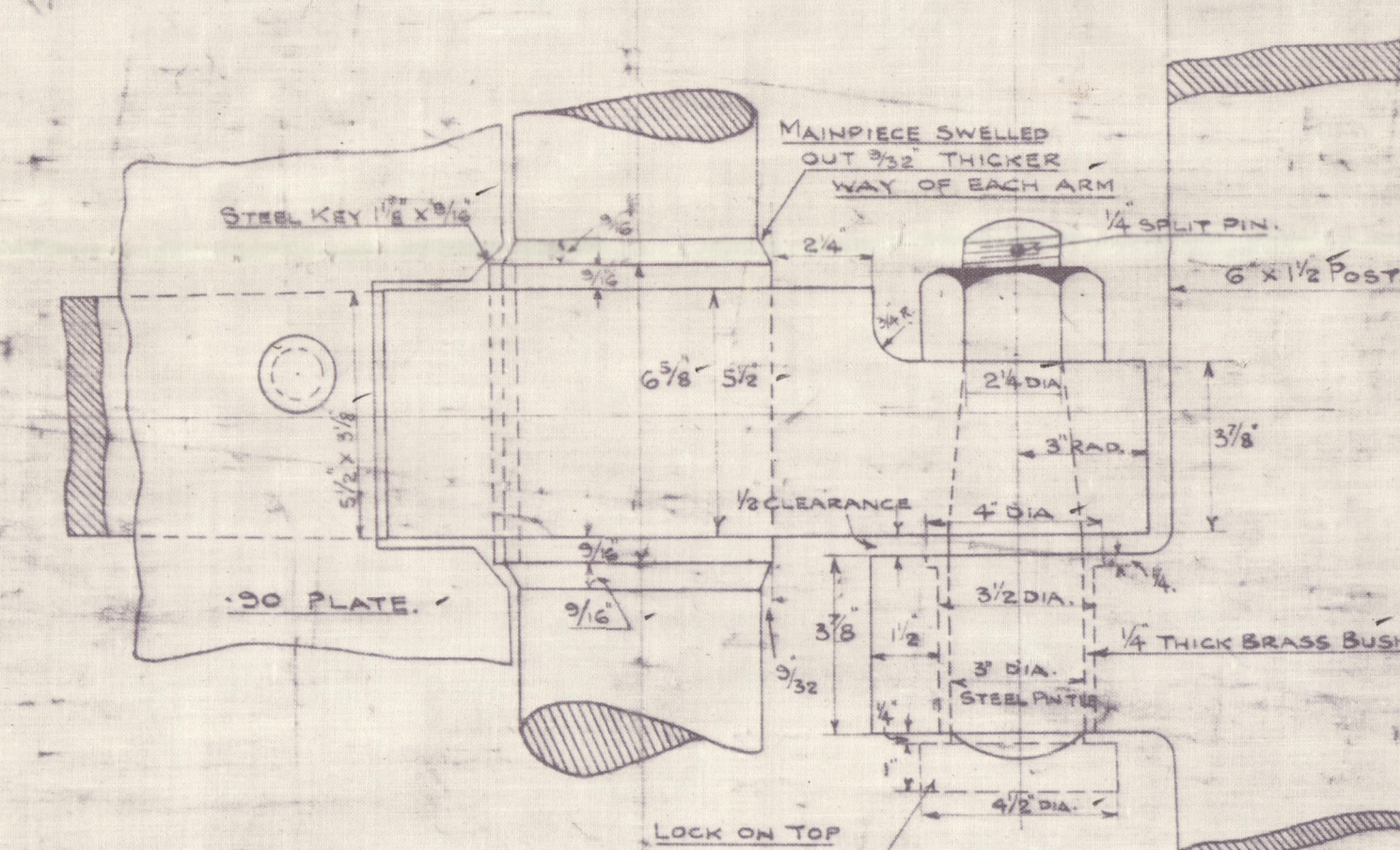
DETAIL OF WROUGHT IRON QUADRANT (SEE ALSO QUADRANT IN POSITION)  
1 OFF  
SCALE 1" = 1 FOOT.



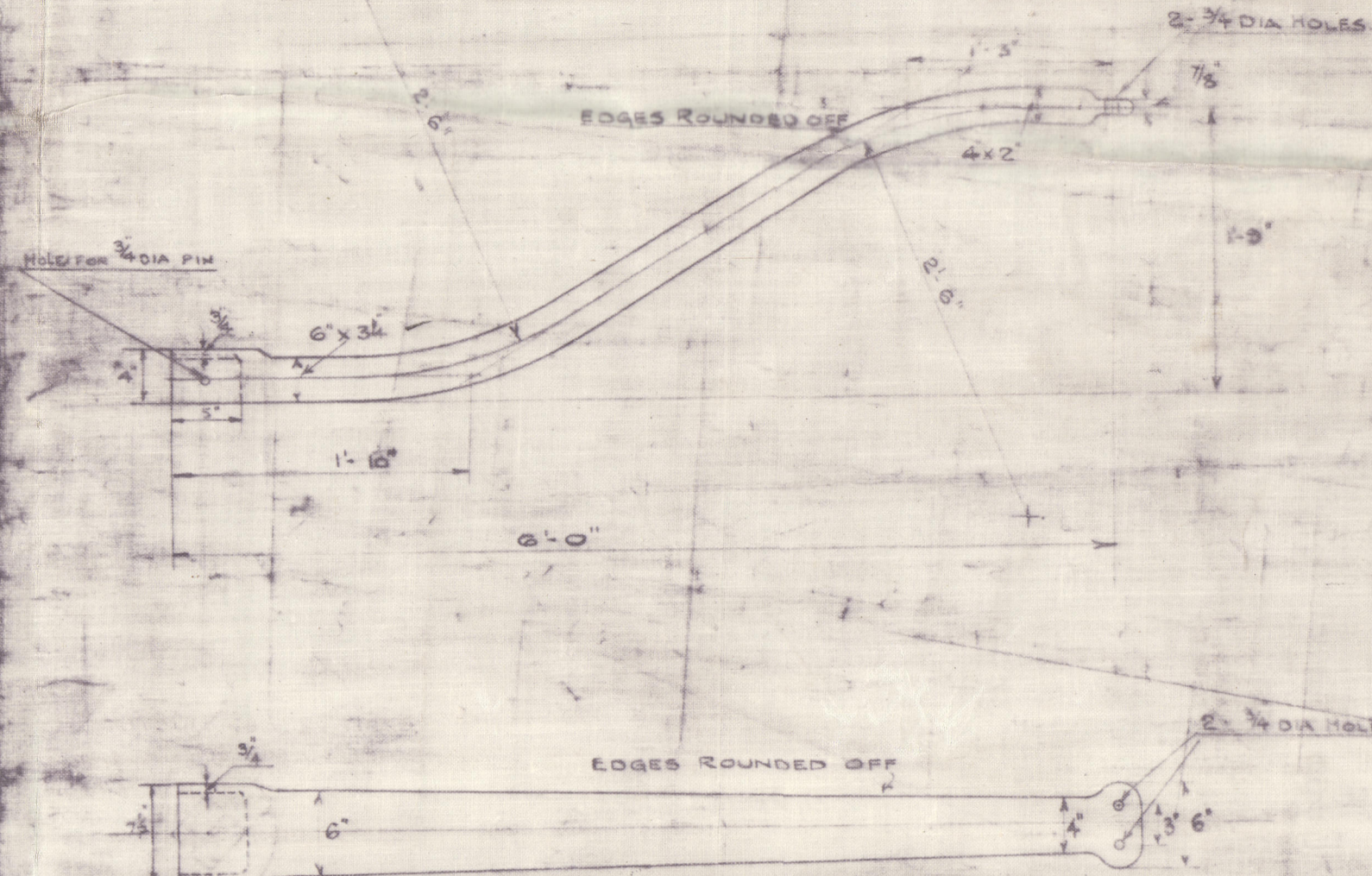
PLAN OF TOP ARM SHOWING STOP  
SCALE 1/4 FULL SIZE.



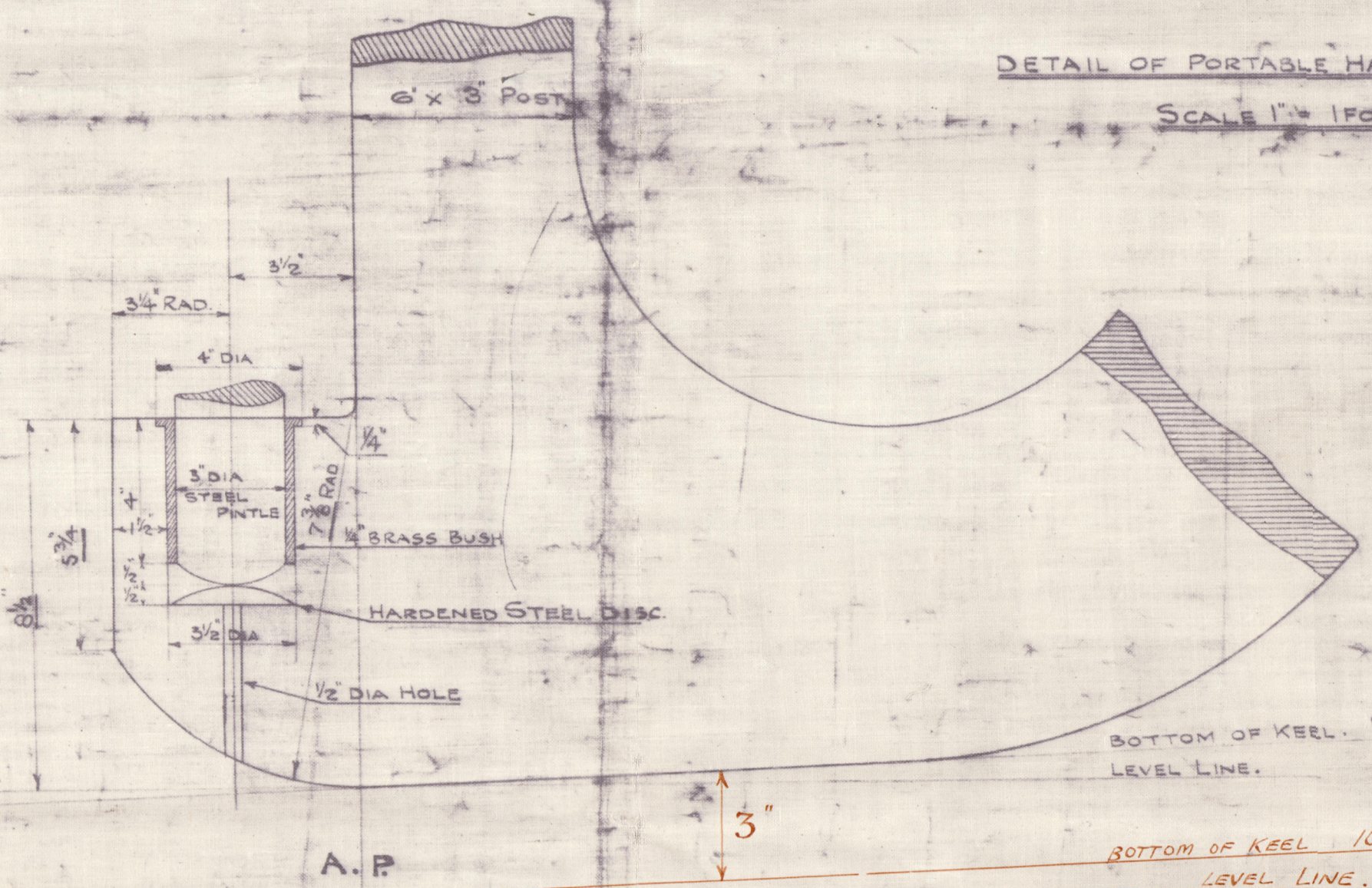
PLAN OF ORDINARY ARM  
SCALE 1/4 FULL SIZE.



ELEVATION OF ARMS & GUDGEONS  
SCALE 1/4 FULL SIZE.



DETAIL OF PORTABLE HAND TILER 1 OFF W/IRON  
SCALE 1" = 1 FOOT.



DETAIL OF BOTTOM GUDGEON  
SCALE 1/4 FULL SIZE.

Foot of sternpost of 1049 raised 3" above base, a keel channel therefore.

NOTE: DIMENSIONS UNDERLINED ARE NOT TO SCALE

1049  
1014

22-S-43

010012- 010023- 01049



Messrs Thornycroft & Co. Ltd  
Southampton

Stemframe & Rudder for

T. S. Tug. Yaw N<sup>o</sup>. 1049.

"

"

J. Clausen

010012-010023-0149



© 2021

Lloyd's Register  
Foundation