

28/4/25

MIDSHIP SECTION

OF

TWIN SCREW TUG.

TO CLASS 100. A.I. LLOYDS (FOR TOWING PURPOSES)

SCANTLING NUMBERS

LONGITUDINAL NUMBER = 4794.5
TRANSVERSE NUMBER = 43
d = 11.9

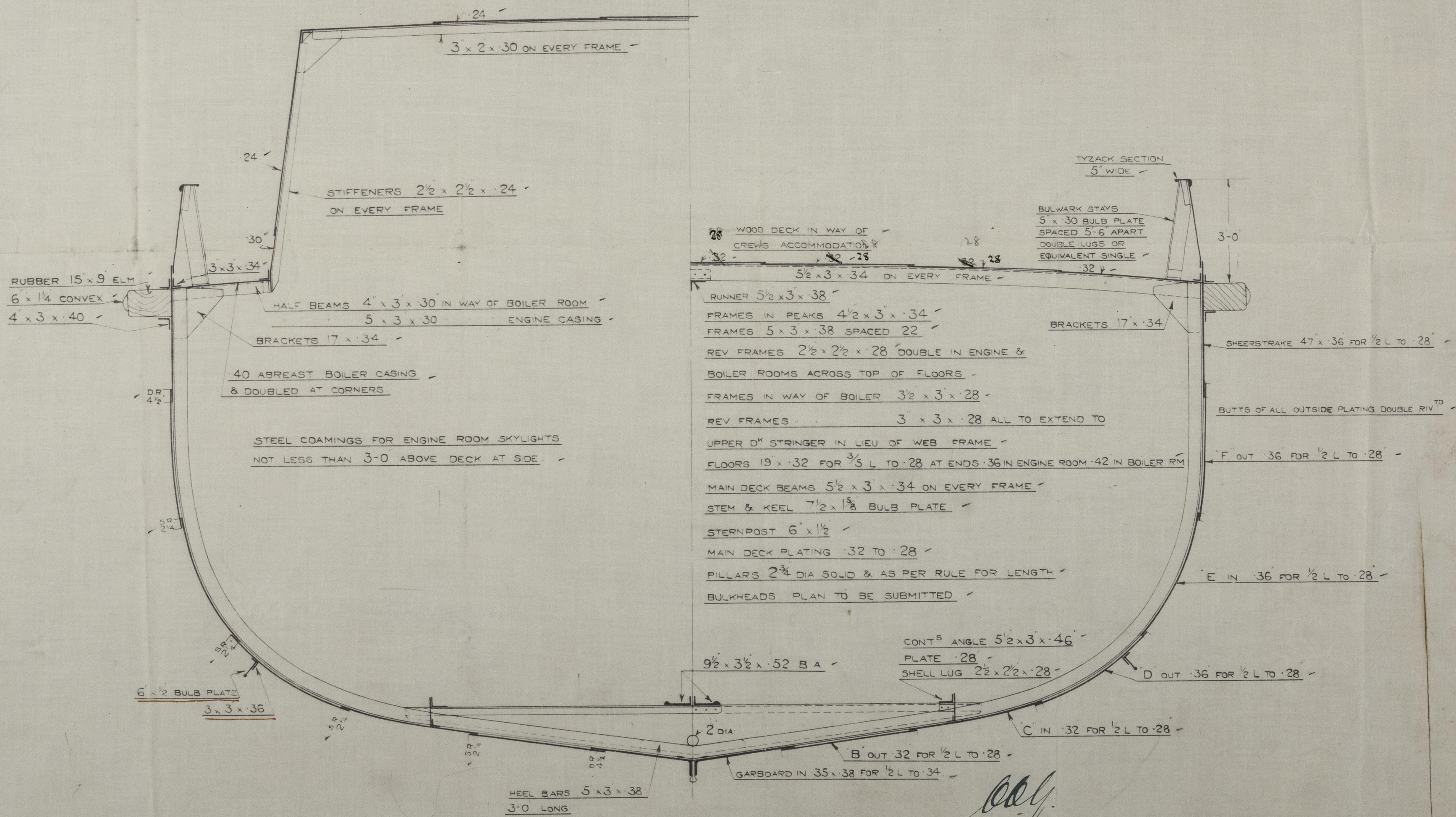
DIMENSIONS

LENGTH B.P. ~~110~~ 111'-6"
BREADTH M^LD 29-6"
DEPTH 13-6"

SCALE 1/2" = 1 FOOT

EQUIPMENT

1 BOWER ANCHOR 7 1/2 CWT STOCKLESS
1 " " 7 " " "
1 KEDGE 3 " " "
120 FMS 1 1/8" STUD LINK CHAIN
60 " 6" HAWSER
60 " 5" WARP



1049

28.4.25

251/25 2021

010012-010023-0148

Messrs Thornycroft & Co. Ltd
Southampton

Mid Section for T.S. Tug.

Yard No. 1049.

8/5 Clausen turn

~~GEN. BOX NO~~

~~876~~



© 2021

Lloyd's Register
Foundation

010012-010023-0148