

PRINCIPAL DIMENSIONS:

LENGTH B.P.	416'-0"
BREADTH EXTRA.	57'-1"
BREADTH MLD.	56'-10 1/2"
DEPTH MLD. UPPER DECK	37'-4"
DEPTH MLD. SECOND DK.	28'-7"
DEPTHS TO LENGTH-UPPER DECK	11.14

DETAIL AT A.A.

DETAIL OF TANK GUSSETS

ARRANGEMENT OF BILGE BRACKETS IN NO 1 HOLD

EQUIPMENT:

2	POWER ANCHORS	68 CWT
1	STUD CABLE CHAIN	225 FATHOMS 2 1/2"
1	STEAM ANCHOR (STOCKLESS)	23 1/2 CWT
1	STEAM WIRE	90 FATHOMS 5" - 6 1/2 FSW
1	TOWLINE	120 " 4 3/4 - 6 1/2 SPECIAL F.S.W.
2	HAWKERS	90 " 2 3/4 - 6 1/2 FSW
2	WARRPS	90 " 2 1/2 - 6 1/2

DETAIL OF DRAIN HOLES

EQUIPMENT NUMERAL:

L(8+D)	39789
MIDSHIP DECKHOUSE	3025 x 75 x 50
CASINGS	20.5 x 75 x 50
"	3975 x 10.0 x 50
AFTER DECKHOUSE	28 x 7.5 x 50
	39798

CLASS:

100 A1 LLOYDS, WITH FREEBOARD CORRESPONDING TO A DRAFT 18" MORE THAN THAT OF A COMPLETE SUPERSTRUCTURE VESSEL.

WELDED CONSTRUCTION:

GENERAL:

THE CONSTRUCTION CALLS FOR RIVETED LONGITUDINAL SEAMS AND WELDED BUTTS THROUGHOUT

SHELL PLATING:

BOTTOM SHELL: BUTTS ALL WELDED FROM INSIDE
SIDE SHELL: INSIDE STRAKES WELDED FROM INSIDE
OUTSIDE STRAKES WELDED FROM OUTSIDE

TANK TOP, 2ND. DECK AND UPPER DECK:

ALL BUTTS WELDED FROM UPPER SIDE

WATER TIGHT BULKHEADS,

CENTRE LINE BULKHEADS, AND

TWEEN DECK BULKHEADS:

COMPLETELY RIVETED THROUGHOUT BUT WELDED CONNECTION AT BOTTOM TO TANK TOP (OR TO 2ND. DECK IN CASE OF TWEEN DECK BULKHEADS)

CENTRE LINE BULKHEAD:

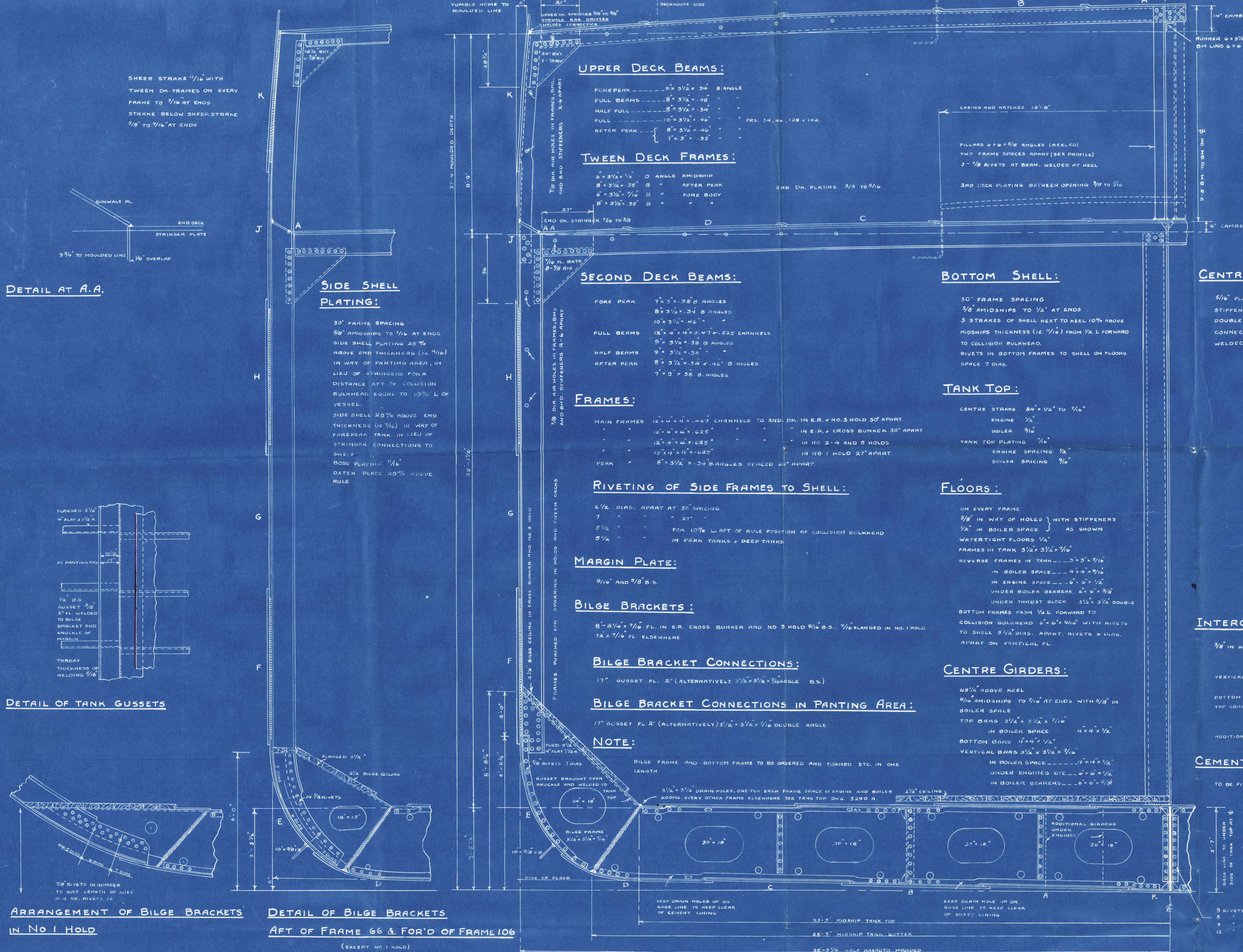
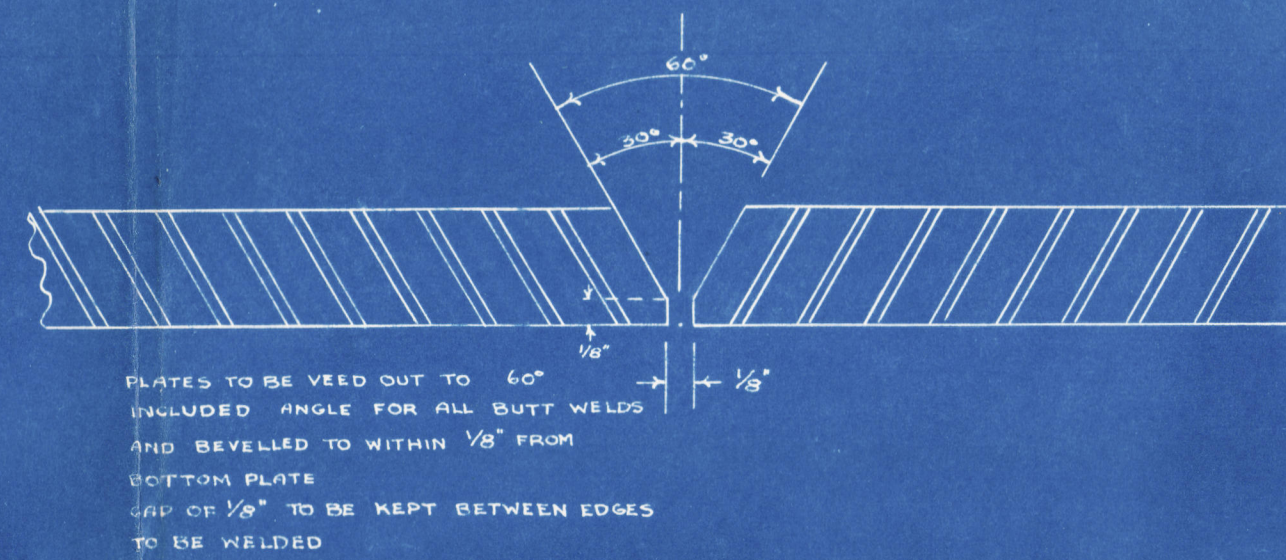
5/16" PLATING
STIFFENERS TWO FRAME SPACES APART
DOUBLE STIFFENERS AT HATCH ENDS WITH BRACKETS AT TOP AND BOTTOM CONNECTION TO SECOND DECK 3" x 3" x 3/8"
WELDED CONNECTION TO TANK TOP

INTERCOSTAL PLATE GIRDERS:

(AS SHOWN ON TANK TOP PLANS)
3/8" IN HOLD
1/16" IN ENGINE SPACE
1/2" IN BOILER SPACE
VERTICAL STIFFENERS 3" x 3" x 3/8"
IN BOILER SPACE 3 1/2" x 3 1/2" x 1/16"
BOTTOM CONNECTIONS 3 1/2" x 3 1/2" x 1/16"
TOP CONNECTIONS 3 1/2" x 3 1/2" x 3/8"
UNDER ENGINE 4" x 4" x 1/2"
IN BOILER SPACE 4" x 4" x 1/2"
ADDITIONAL GIRDERS UNDER ENGINES AND FORWARD OF 1/2 L AS PER SECTION II

CEMENT CHOCKS

TO BE FITTED AT UPPER EDGE OF BILGE CEILING IN ALL HOLDS EXCEPT NO 1



MIDSHIP SECTION NORTH SANDS CARGO STEAMER

HULL NO. 114 S.S. PORT STAGER

WEST COAST SHIPBUILDERS LTD.

FALSE CREEK 1943 VANCOUVER, B.C.

VANCOUVER 127' 2 1/2" 127' 2 1/2"