

# **- No 718 -** **- MIDSHIP SECTION -**



**DIMENSIONS**  
 LENGTH BETWEEN PERPS. 117'-0" 1st LONGITUDINAL No (L x D) = 1345.5  
 BREADTH MOULDED 24'-0" 2nd " " " L x (D + D) = 4133.5  
 DEPTH 11'-6" 40 to Upper D<sup>o</sup> 10-17 d in Hold 9.2  
 40 to Bulkhead = 6.32 d in Boiler Room 9.34 10-62

**- SCALE 1/2" = 1'-0" -**

**TO CLASS 100A1** *breaches 61.5%*

## **SCANTLINGS**

**FRAMES SPACED 21 1/2" THROUGHOUT**  
 " IN HOLD 4' x 3' x 38 1/2"  
 " BOILER ROOM + BUNKER 4' x 3' x 38 1/2"  
 " ENGINE ROOM 4' x 3' x 38 1/2"  
 " TRIMMING TANKS AFT 4' x 3' x 40"  
 " PEAKS 4' x 3' x 38 1/2"

**ALL FRAMES STOP AT UPPER D<sup>o</sup> IN WAY OF BRIDGE**  
 IN BRIDGE TWEEN D<sup>o</sup> FRAMES 4' x 3' x 38 1/2" ON ALTERNATE FRAMES  
 EXCEPT AT FOUR FRAMES AT EACH END OF BRIDGE WHERE THEY ARE ON EVERY FRAME  
**ALL FRAMES IN WAY OF FILE EXTEND TO FILE D<sup>o</sup>**  
 DOUBLE FRAMES FOR 9/16" L TO FORE PEAK BULKHEAD (DOUBLING FR TO LOWER TURN OF BILGE 3' x 3' x 28")  
 KEY FRAMES IN ER 4' x 3' x 38 1/2" SINGLE IN BR 2 1/2' x 2 1/2' x 38 SINGLE UNDER BOILER BEARERS 3' x 3' x 38"  
 " FR. FOR 9/16" L 2 1/2' x 2 1/2' x 38" IN WAY OF TRIMMING TANK AFT.  
 FLOORS 28" 32" IN ER 36" IN BR (FOR DEPTHS SEE PROFILE)  
 FLOORS WHERE MARKED FLANGED 3" ALL FLANGED FLOORS 1-32 IN  
 IN ER 32" IN BR 36" IN BR (FOR DEPTHS SEE PROFILE)  
**STEM 5 1/2' x 17"** *See detail plan*  
**STERN POST 3 1/2' x 24"** *See detail plan*  
**CENTRE KEELSON**  
 CENTRE TIE PLATE 3 1/2' x 24" FOR 3/4" L - 28" AT ENDS 42" IN BR  
 FOUNDATION BAR DOUB. 12' x 3 1/2' MINIMUM THICKNESS 3/4" DOUB.  
 BOTTOM BAR DOUB. 5 1/2' x 3 1/2' x 34" - 34" AT ENDS 34" IN BR (ROOMS CEMENTED)  
 VERTICAL " 3' x 3' x 32" - 32" " 42" IN BR ROOM  
**SIDE KEELSON**  
 INTERCOSTAL PLATE 28" x 28" AT ENDS 38" BR  
 TOP BARS SINGLE 6' x 3' x 40" - 40" ENDS 52" BR  
 BOTTOM " 3' x 3' x 28" - 28" " 28" BR 1/2"  
 (COVERED BY CEILING?)

## **DOUBLE BOTTOM (UNDER PERP. HOLD)**

C<sup>o</sup> GIRDER 2 1/2' x 34" - 28"  
 SIDE " 26"  
 FLOORS 26" + 08 FOR WT. FLOOR  
 MARGIN PLATE 18' x 28"  
 C<sup>o</sup> LINE STRAKE 39' x 30"  
 TANK TOP PLATING 28"  
 WING BXTS 28"  
 TANK FRAMES + REV. " 3' x 3' x 26" SINGLE  
 all single angles

**SECTION IN WAY OF BOILER ROOM**  
 Rule Height 13" INCREASED TO 30" IN DEPTH IN LIEU OF FITTING WING BRACKET.  
 Rule Height 13" INCREASED TO 30" IN DEPTH IN LIEU OF FITTING WING BRACKET.

**ALTERNATE FRAMES ON PORT SIDE ONLY**  
 10-32 4' x 3' x 40"  
 THIS TO MEET OWNERS REQUIREMENTS  
 FILE SIDE PLATING 24"  
 STRINGER ANGLE 2 1/2' x 2 1/2' x 24"  
 " PLATE 13' x 24"  
 " TIE PLATES 6' x 24"  
 FILE D<sup>o</sup> BEAMS 5' x 3' x 38 1/2" ON ALT. FRAMES (See detail plan)

**EQUIPMENT No**  
 RND LONG No L (B + D) = 4153.5  
 BRIDGE 37.58 x 70 x 75 = 197.2  
 FORECASTLE 30.75 x 70 x 75 = 161.43  
 D<sup>o</sup> HOUSE ON UPPER D<sup>o</sup> 24' x 7' x 5 = 84.0  
 WHEEL HOUSE 14.5 x 7 x 5 = 50.75  
 4646.88 = d  
 4868.18

**EQUIPMENT d**  
 2 BOWER ANCHORS 7 1/4" x 7" CWTs (STOCKLESS)  
 1 STREAM ANCHOR 2 1/4" CWT EX-STOCK  
 165 FATHOMS 1 1/2" STUD CHAIN CABLE  
 15 " 2 1/4" STEEL WIRE ROPE STREAM WIRE  
 75 " 2 1/4" " " TOWLINE  
 90 " 4" MANILLA

## **RIVETING SCHEME**

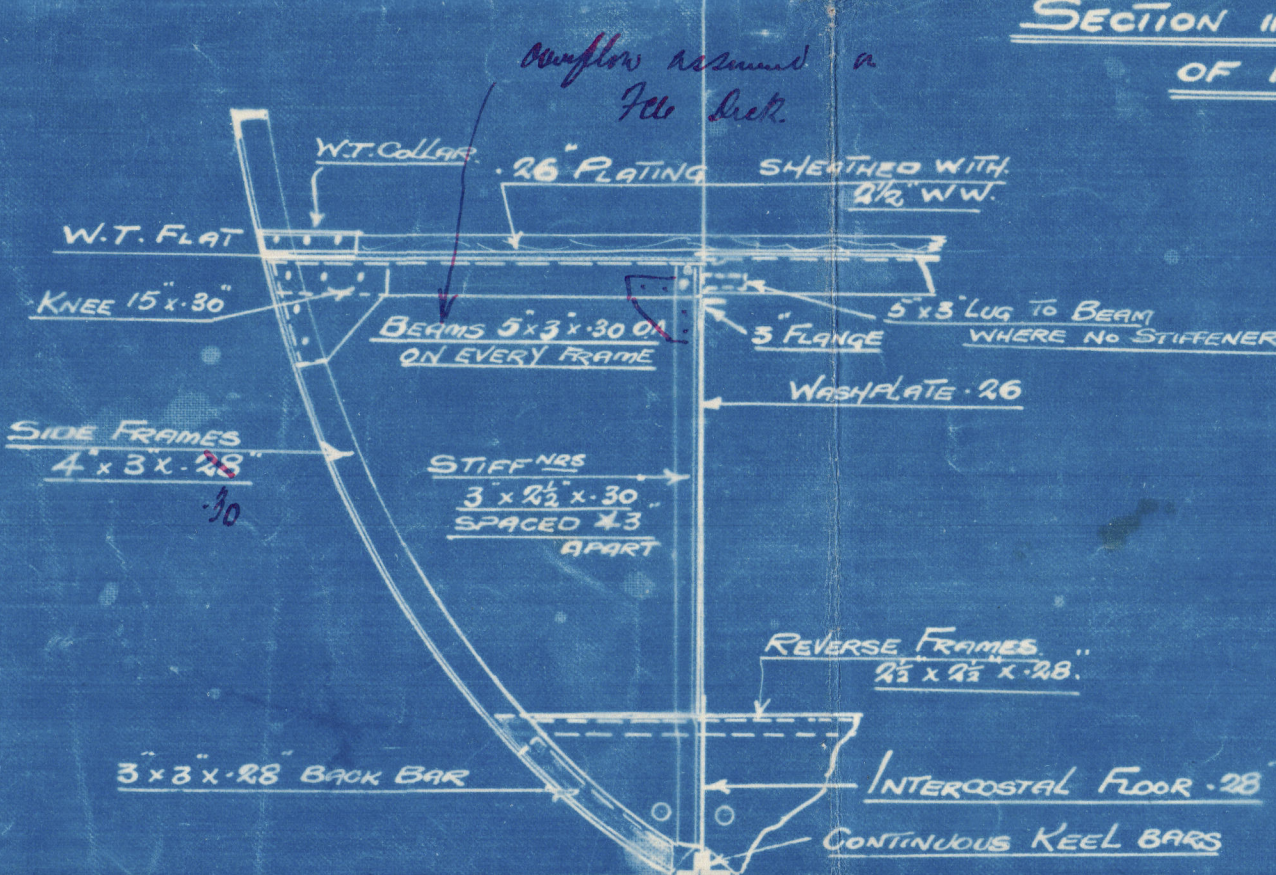
ITEM	SEAM	SPEED	LAPS	SPACE
SHELL KEEL	3/4" OR	4 DIAS	3/4" TR - 3/4" OR	3 1/2" DIAS
" A STRAKE	" S.R.	"	" 3/4" OR	" "
" B "	" S.R.	"	" 3/4" OR	" "
" C "	" S.R.	"	" 3/4" OR	" "
" D "	" S.R.	"	" 3/4" OR	" "
" E "	" S.R.	"	" 3/4" OR	" "
BRIDGE FILE SIDES	" S.R.	"	" 3/4" OR - 3/4" SR	" "
SPRINGER UNDER D <sup>o</sup>	" S.R.	"	" 3/4" OR	" "
DECK PLATING	5/8" SR	4 1/2 DIAS	3/8" OR - 3/8" SR	4 DIAS
TIE PLATES	"	"	3/8" OR	" "
STRINGER PLATE BRIDGE	"	"	3/8" OR - 3/8" SR	3 1/2" "
TANK TOP	5/8" S.R.	4 DIAS	3/8" OR	4 " "
FRAMES FLOOR + KEY FRAMES	"	"	5/8" SPACED 7 DIAS	" "
FRAMES + SHELL	"	"	3/4" " 7 " "	" "
KEY FRAMES + T. TOP PLATING	"	"	" " 7 " "	" "
BEAMS + D <sup>o</sup> PLATING (EVERY + ALTERNATE)	"	"	3/8" " 7 1/2 " "	" "
D <sup>o</sup> STRINGER ANGLE (EXPOSED + OTHERWISE)	"	"	3/8" " 7 1/2 " "	" "
CENTRE KEELSON TOP ANGLES	"	"	3/8" " 7 " "	" "
" " BOT. ANGLES	"	"	3/4" " 7 " "	" "
C <sup>o</sup> GIRDER TOP ANGLES	"	"	3/8" " 5 " "	" "
" " BOT. "	"	"	3/4" " 5 " "	" "
BEAMS + W.T. FLAT PLATING	"	"	3/8" " 7 " "	" "
FRAMES + SHELL IN TRIMMING TANKS	"	"	3/4" " 5 1/2 " "	" "
G - 3/4" RV. IN BEAMS BETWEEN FRAMES	"	"	" " 5 1/2 " "	" "

(EXCLUDING FRAME RIVET) 1 RIVET THRO FRAME + SEAM

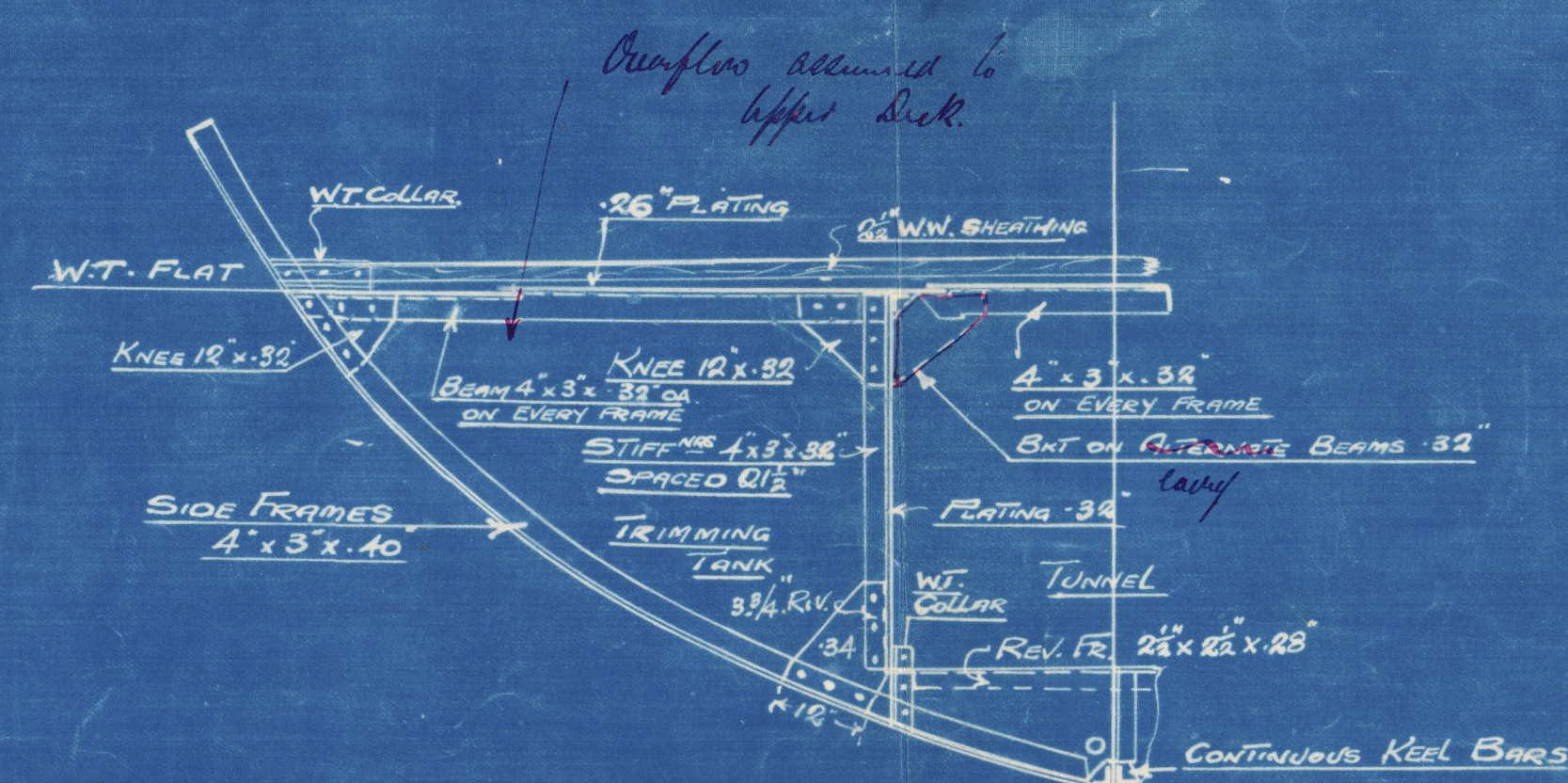
THIS INCLUDES PART OF BOTTOM FOR 9/16"

*See 2R in way of stern*

## **SECTION IN WAY OF FORD HOLD**



## **SECTION IN WAY OF TRIMMING TANK AFT**



## **SECTION IN WAY OF TRIMMING TANK AFT**

**APPROVED**  
**LLOYDS REGISTER OF SHIPPING**  
*W. Ward*  
 DATE 17.6.30





Hall, Russell & Co.Ltd.

No. 718.

Midship section.

=====

S.S. "EARL SIGURD".

abu. Report. 16451.



© 2021

Lloyd's Register  
Foundation