

181242
979

SHIP NOS 468 & 472

RUDDER PLAN

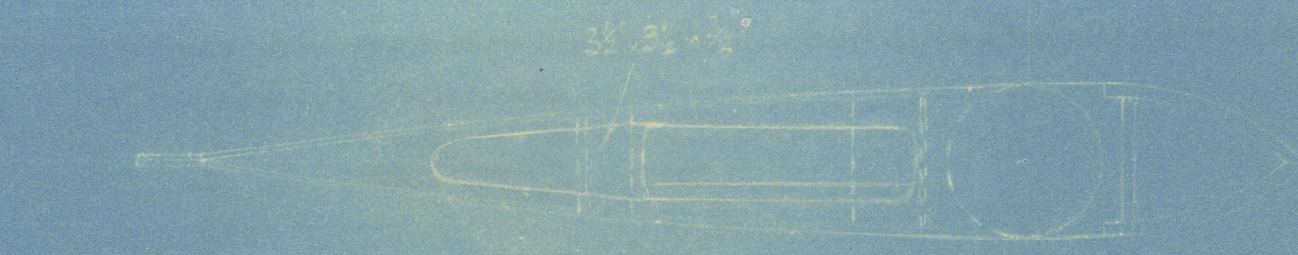
SCALE 3/4" = 1 FOOT

TO LLOYD'S TESTS & REQUIREMENTS
 AREA OF RUDDER TO E. OF PINTLES = $13.0 \times 6.0 = 78 \text{ sq ft}$
 CENTRE OF GRAVITY AHEAD E. OF PINTLES = 3'
 $A \times D = 78 \times 3 = 234$
 LOAD TRIAL SPEED 12 KNOTS ON DRAFT 19.5 HEAT
 DIAM. TO RULE 7.8" + 1/2" ON SECTION ~~8.4"~~ **8 1/2"**
 TOP & BOTTOM RUDDER ARMS - CAST STEEL
 RUDDER STOCK - FORGED STEEL
 PINTLES - STEEL (BRASS BUSHED)
 HEIGHT OF RUDDER TAKEN BY CHARKIE AT UPPER DECK

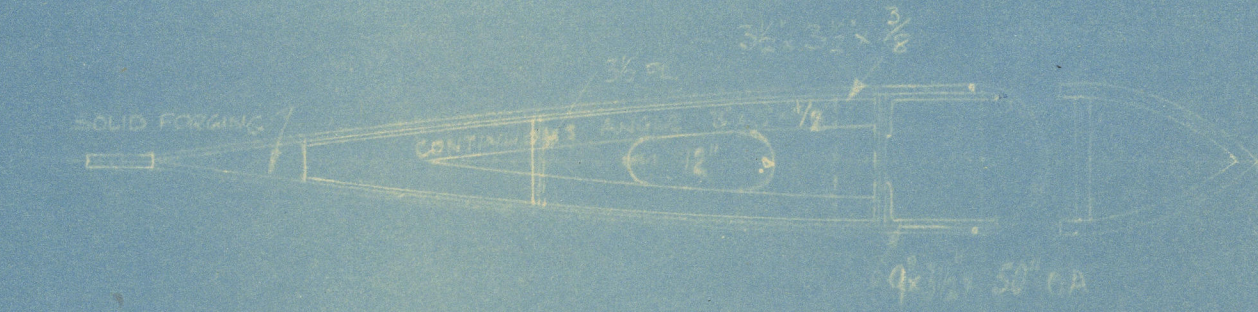
SEE PLAN FINISHED LENGTH
 OF RUDDER STOCK FOR
 KEYWAYS IN STOCK ETC.

increased to 8 1/2" diam
 (over rest) x

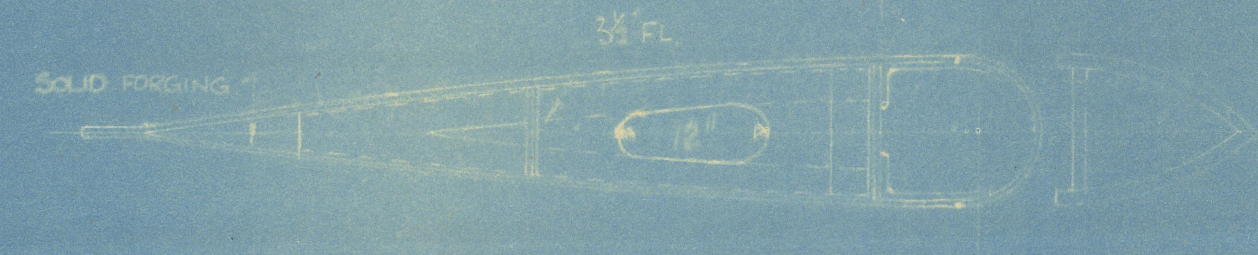
2 1/2" (over rest) x
 6" DIA. COUPLING BOLTS WITH
 DOUBLE HEX NUTS OR HALF STAINLESS
 DEPTH 1" LOCKING DISK



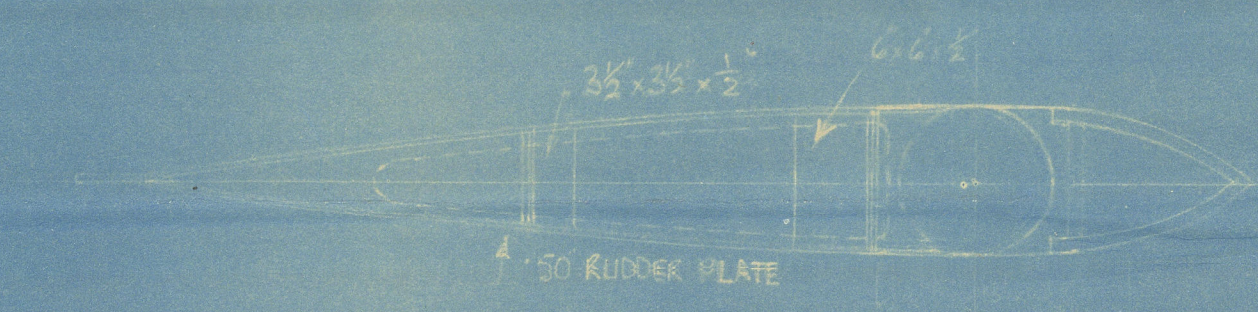
RUDDER TOP



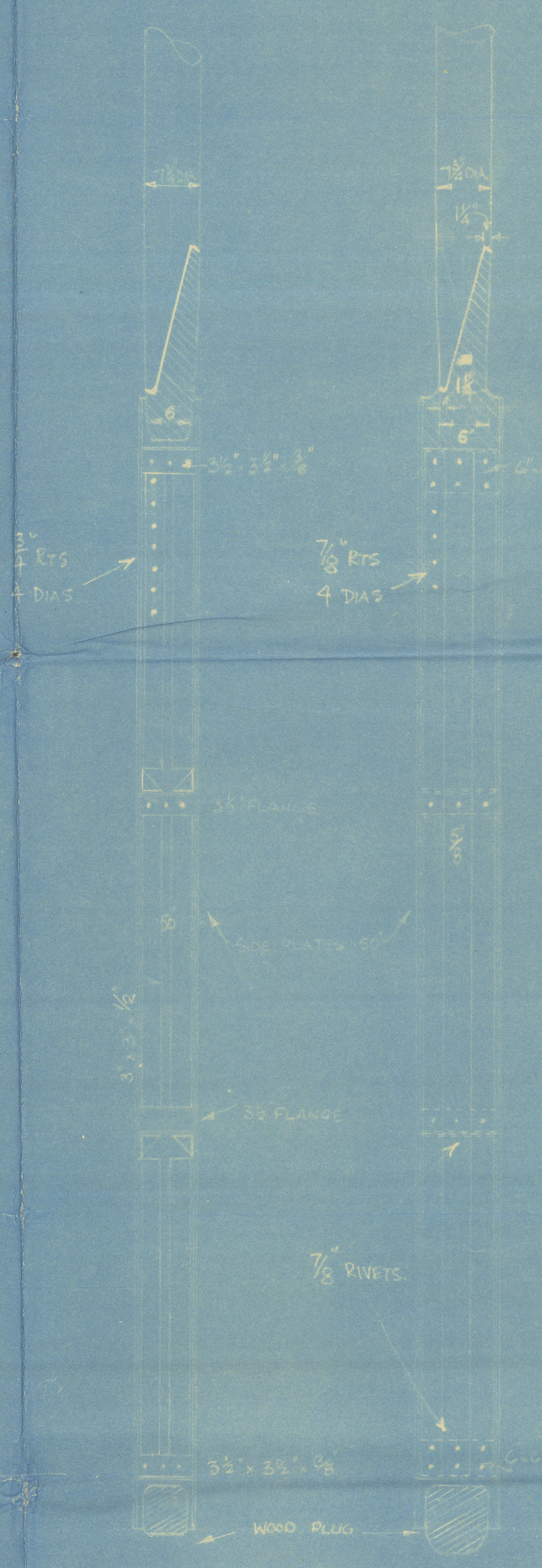
UPPER DIAPHRAGM



LOWER DIAPHRAGM

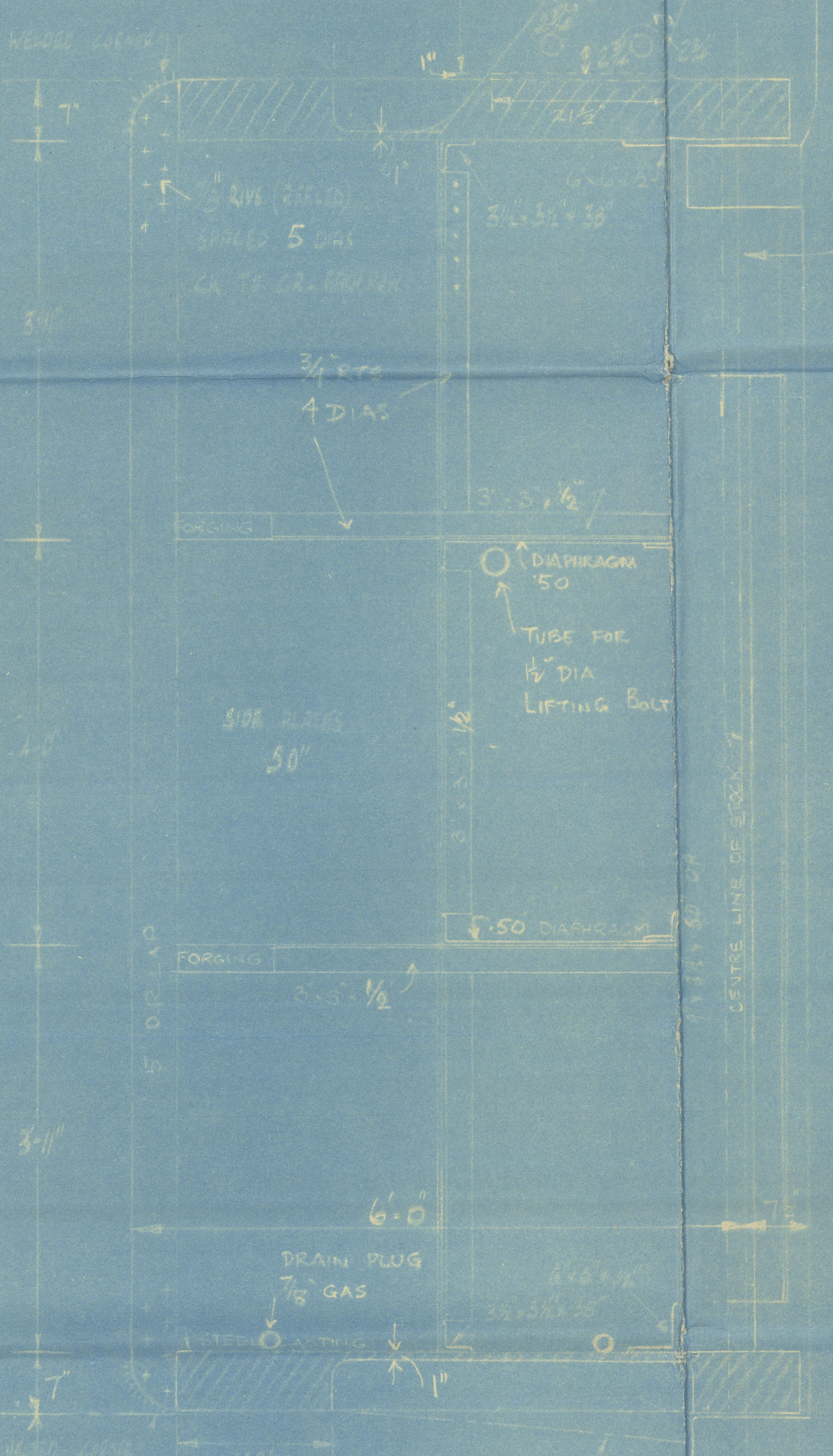


RUDDER BOTTOM

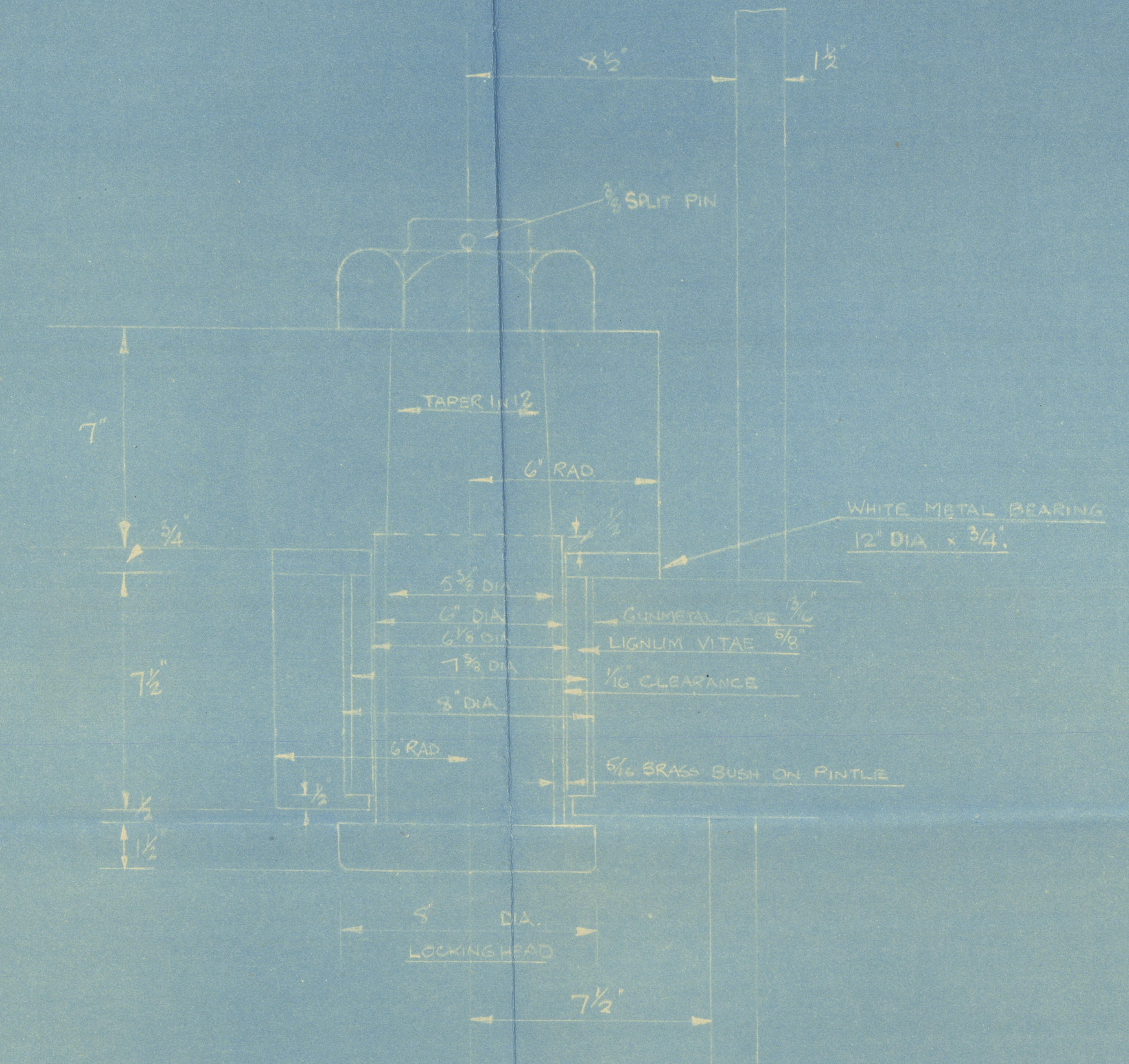


ELEVATION OF INNER WEB
 LOOKING AFT

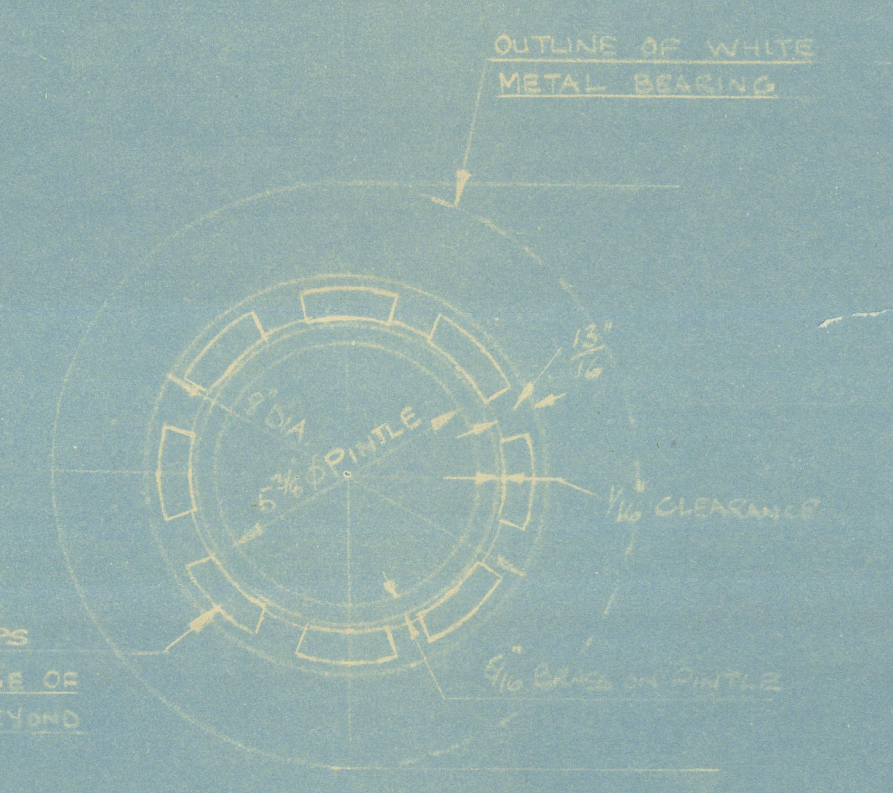
ELEVATION OF OUTER WEB
 LOOKING AFT



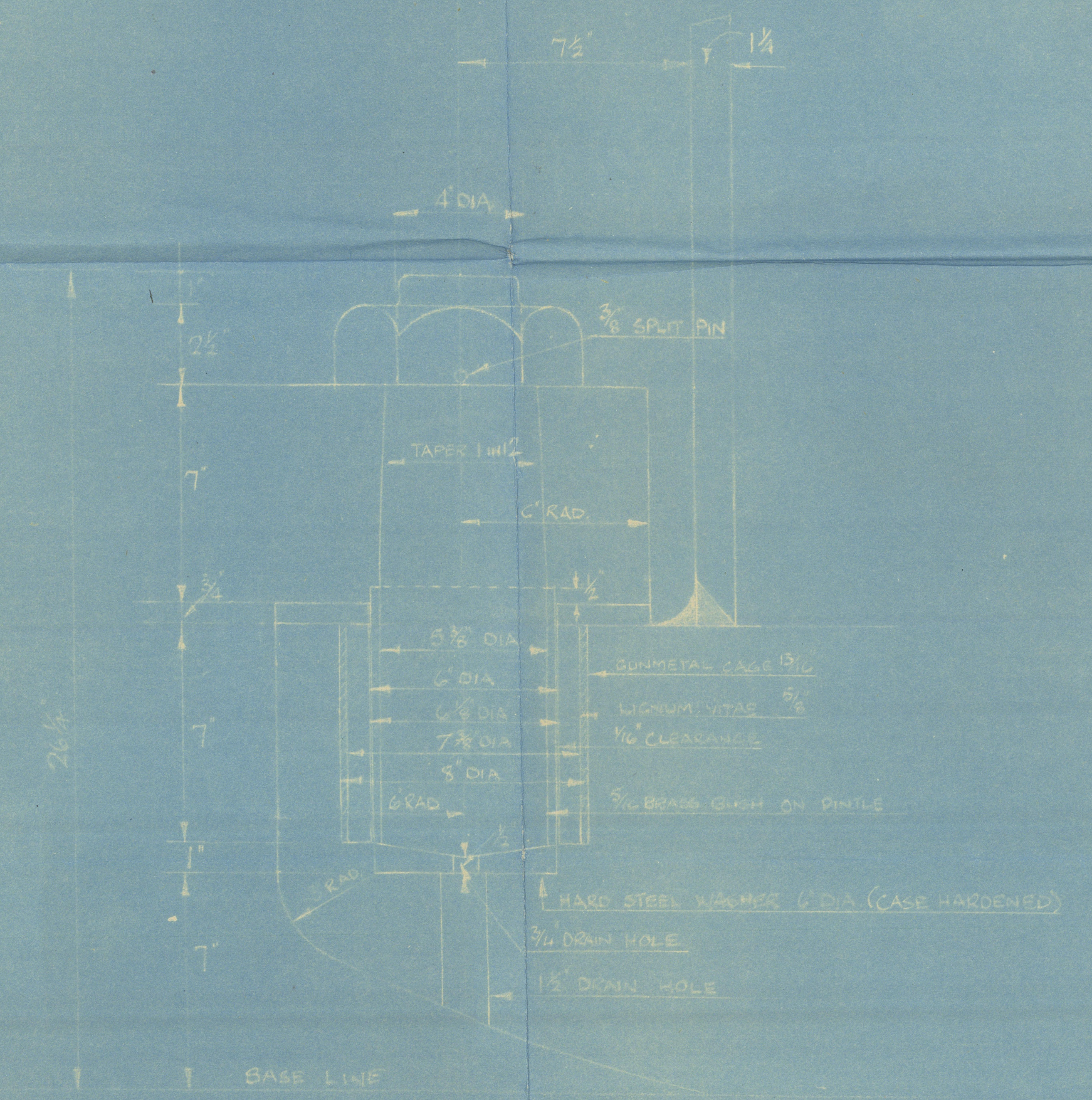
STABE SIDE IS CLOSER PLATE,
 SECURED BY TAP RIVETS TO
 WESS AND DIAPHRAGM.



ELEVATION OF TOP GUDGEON

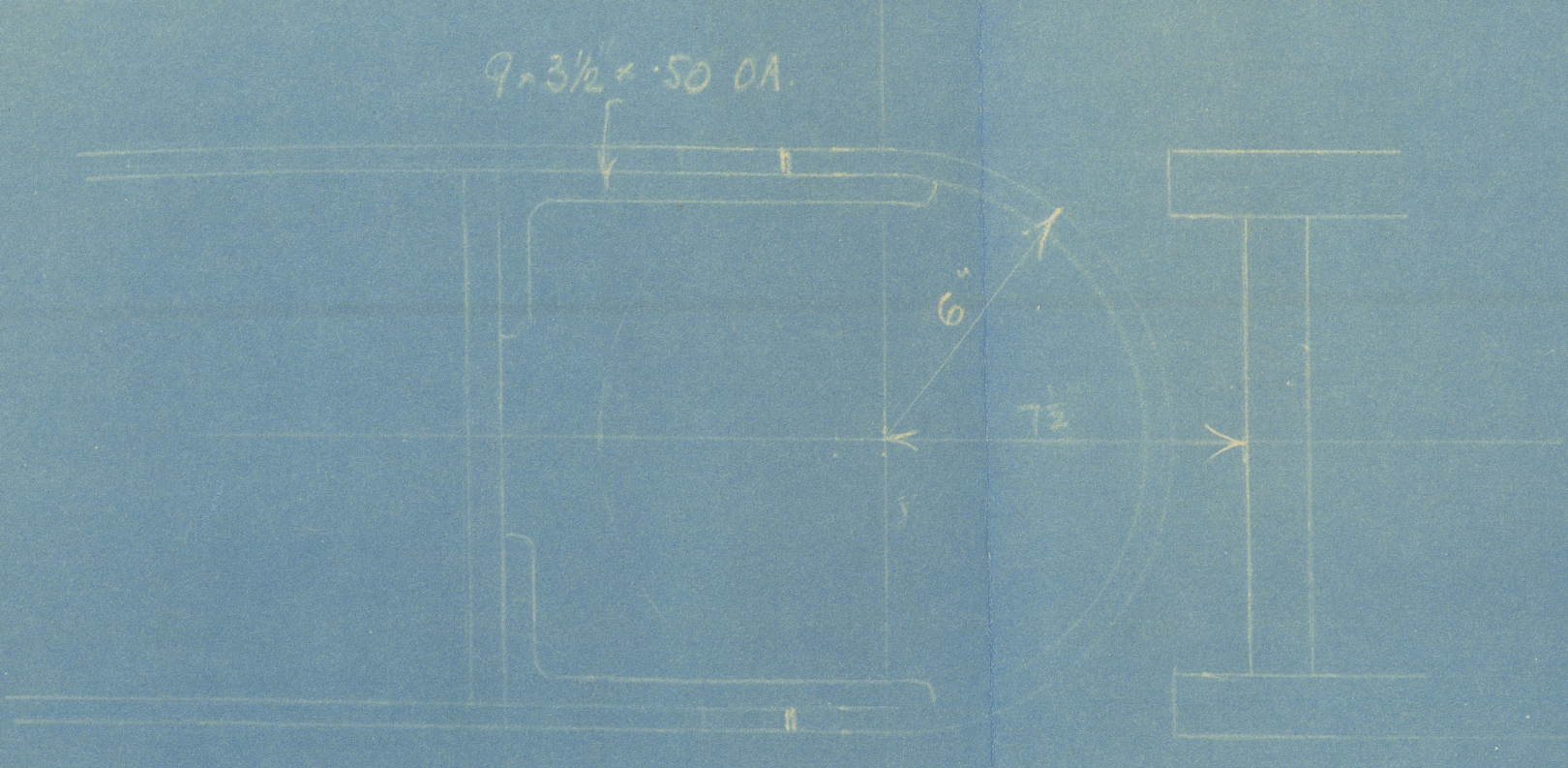


DETAIL OF GUDGEON BUSHING



ELEVATION OF BOTTOM GUDGEON

SCALE 3/4" = 1 FOOT



0160 2/2

114

© 2021

FOR ENCLOSURE.

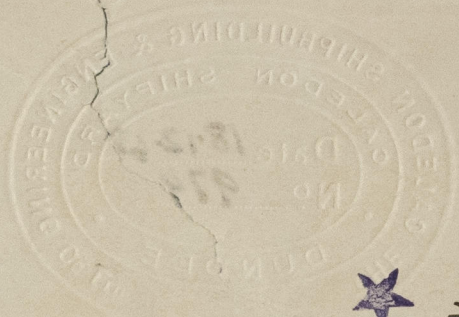
LR

To

Lloyd's

Register
Foundation

From THE CALEDON SHIPBUILDING & ENGINEERING CO. LTD.
CALEDON SHIPYARD, DUNDEE.



Budder

S.S. "WOODLAND" - CALEDON
YARD No. 468



S.S. "PINELAND" CALEDON
YARD No. 472.

RECORDS DEPT.,
LONDON



© 2021

Lloyd's Register
Foundation

009976-009985-0160 1/2