

## Lloyd's Register of Shipping.

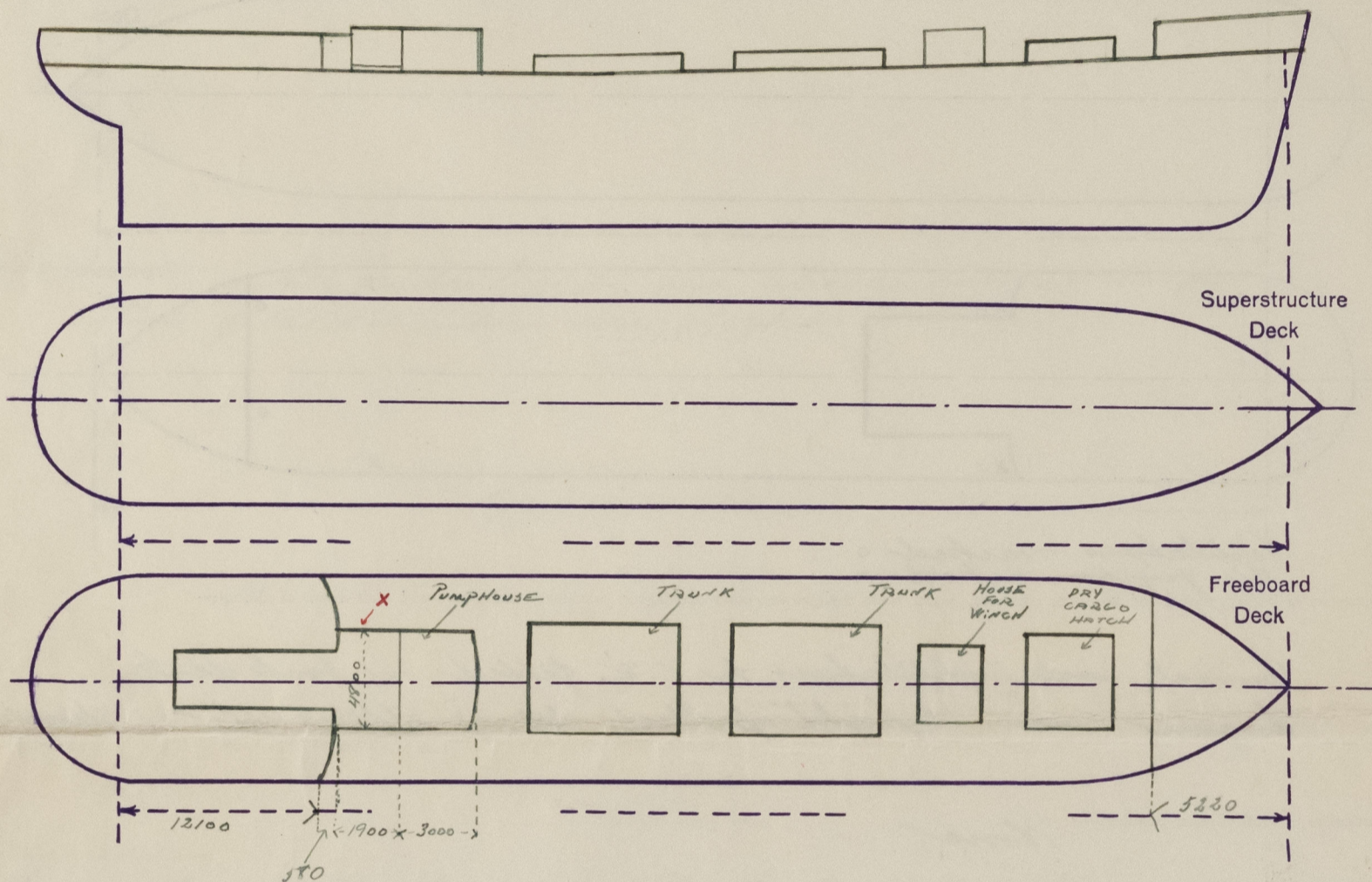
Index No. ....  
(For London Office only).

## SURVEYS FOR FREEBOARD.

(CONDITIONS OF ASSIGNMENT.)

Ship's Name M<sup>y</sup> "DIVINA" Port of Survey Stockholm  
 Official Number 8542 Surveyor's Signature R. F. Johnson  
 Nationality and Port of Registry Swedish, Stockholm Date of Survey 30, 13, 30, 8, 15, 28, 1, 1942

Disposition and dimensions of superstructures, trunks, deckhouses and machinery casings to be inserted in the diagrams and tabular statement:—



Particulars of Superstructures, Trunks, Casings, Deckhouses.

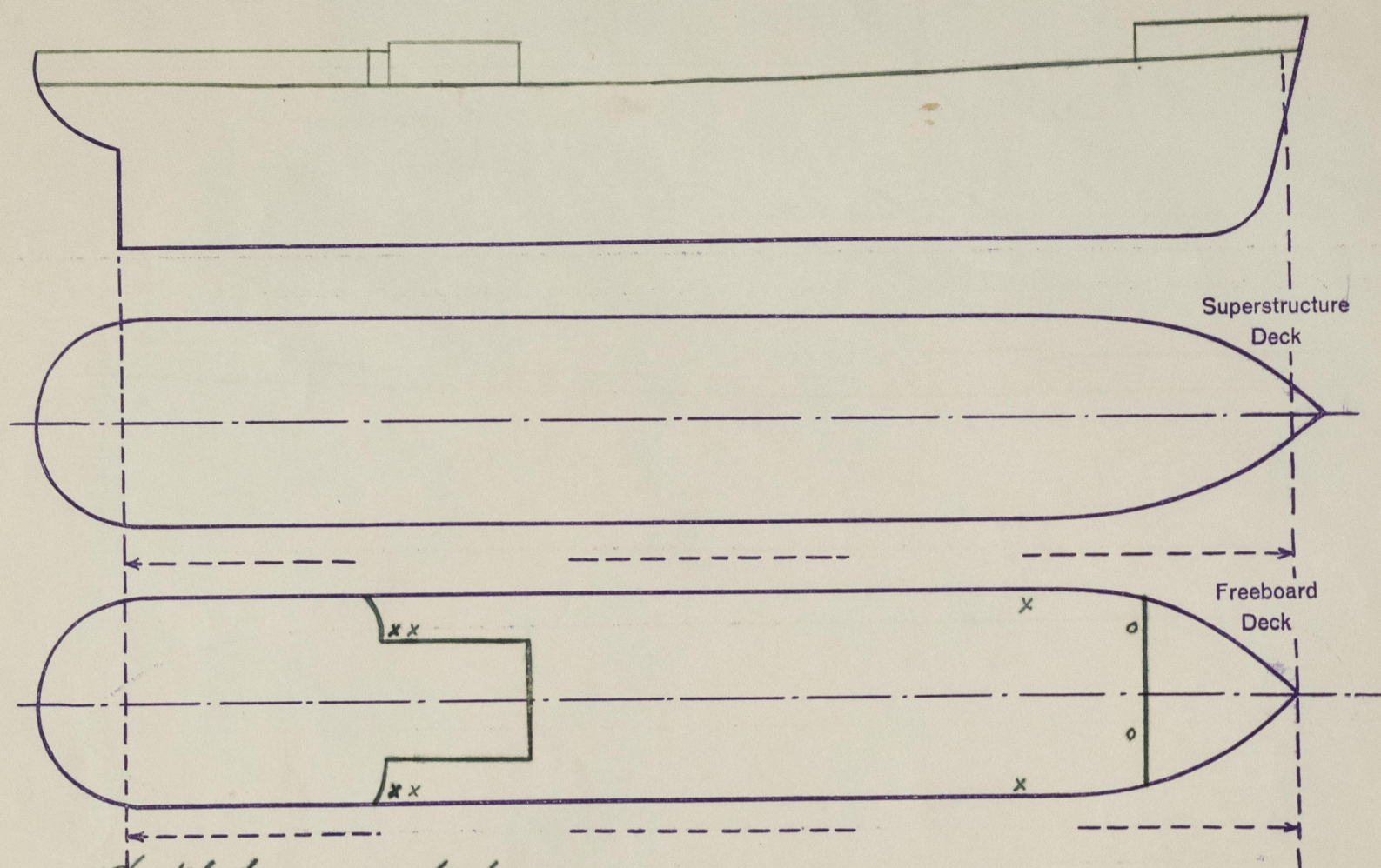
	Coaming	Plating	Stiffeners <i>Rule = 150 + 75 + 8.7</i>	Spacing	End Attachments of Stiffeners <i>Also brackets at top externally.</i>	Size of Openings	Height of Sills	Height of Casings
Poop Bulkhead	150 x 12 E.W.	7.5	140 x 65 x 9 BA	740	<i>EW at top and bottom</i>	No opening	✓	2100
Raised Quarter Deck Bulkhead	✓	✓	✓	✓	✓	✓	✓	✓
Bridge, After Bulkhead	✓	✓	✓	✓	✓	✓	✓	✓
Bridge, Forward Bulkhead	✓	✓	✓	✓	✓	✓	✓	✓
Forecastle Bulkhead	7.0	6.0	<i>Rule = 75 + 65 + 65.</i> 65 x 65 x 6	660	<i>Brackets at top.</i>	1600 x 600	320	2150
Trunk, Aft	✓	✓	✓	✓	✓	✓	✓	✓
Trunk, Forward	✓	✓	✓	✓	✓	✓	✓	✓
Exposed Machinery Casings on Freeboard or Raised Quarter Decks	✓	7.0	140 x 65 x 9.5	690	<i>Knees top and bottom</i>	None	✓	2220
Exposed Machinery Casings on Superstructure Decks ( <i>P.O.P. DECK</i> )	380 x 7	6.0	65 x 65 x 7.0	580	None	1440 x 610	390	2100
Machinery Casings within Superstructures not fitted with Class I Closing Appliances	400 x 7	6.0	65 x 55 x 7.0	580	None	1540 x 600	220	2100
<i>PUMP HOUSE</i> Deckhouses on Flush Deck Ships	400 x 8	7.5	140 x 65 x 9 L	660	<i>Knees top. E.W. bottom</i>	1350 x 600	500	2200

Particulars of Closing Appliances (state if capable of being manipulated from both sides).

Poop Bulkhead	<i>No opening.</i>
Raised Quarter Deck Bulkhead	✓
Bridge, After Bulkhead	✓
Bridge, Forward Bulkhead	✓
Forecastle Bulkhead	<i>Steel door with handle openings both sides.</i>
Exposed Machinery Casings on Freeboard or Raised Quarter Decks	<i>No opening.</i>
Exposed Machinery Casings on Superstructure Decks ( <i>P.O.P. DECK</i> )	<i>Steel doors with handles openings both sides.</i>
Machinery Casings within Superstructures not fitted with Class I Closing Appliances	<i>Steel door with handle openings both sides.</i>
<i>PUMP HOUSE</i> Deckhouses on Flush Deck Ships	<i>Steel door with handle openings both sides.</i>

# PARTICULARS OF PROTECTION TO OPENINGS, ETC.

The following diagrams should be used to indicate the positions of cargo and coaling hatchways gangway, cargo and coaling ports, ventilators, companionways, etc., which would affect the seaworthiness of the ship:—



Ventilators marked o  
Air pipes marked x

Particulars of fiddle, funnel and ventilator coamings, engine room skylight and other openings in machinery casing tops and their means of closing:—

Tunnel and ventilators to E.R. fitted on boat deck.  
Engine room skylight of Steel. All are efficiently constructed.

Particulars of Flush Bunker Scuttles:—

None.

Particulars of Companionways:—

None.

Particulars of Ventilators in exposed positions on freeboard and superstructure decks:—

Two off 230 mm diam. 3300 x 9 mm coaming.  
Ventilator coamings specially supported to the  
forecastle bulkhead.  
Wood covers and tarpaulins for closing fitted.

Particulars of Air Pipes in exposed positions on freeboard, raised quarter, or superstructure decks:

Two - 2" air pipes, to crossbunkers, with 2360 mm high goose necks.  
One - 3" air pipes, to cofferdams, with 860 mm high goose necks.

All air pipes of steel and fitted with means of closing.

Particulars of Gangway Cargo and Coaling Ports:—

None.

Divina.

Particulars of Scuppers and Sanitary Discharge Pipes:—

One discharge pipe is led through the ship's side  
below main deck, and the other ones are led through  
the ship's side above main deck.

All pipes are fitted with storm valves.

Particulars of Side Scuttles:—

All side lights are above main deck  
and fitted with deadlights.

Vertical distance of Sill of lowest Scuttle above top of keel

Particulars of Guard Rails:—

Open rails on main deck 1000 mm high with 3 horizontal rods.  
Planchions spaced 1180 mm apart.  
Open rails on poop deck 1050 mm high with 3 horizontal rods.  
Planchions spaced 1180 mm apart.  
Open rails on forecastle deck 1090 mm high with 3 horizontal  
rods. Planchions spaced 1200 mm apart.

Particulars of Gangways, Lifelines, etc.:—

Life lines will be fitted as convenient.  
(Cargo freeboard assigned).

## Particulars of Freeing Arrangements.

met.	Length of Bulwark	Height of Bulwark	Size of Freeing Ports	Number each side	Area each side m <sup>2</sup>	Rule area each side
After Well						
Forward Well	11.800	1.000	1180 x 240	2	0.57	—

State position of each freeing port ..... After Well:—  
(F. and A. position and height above deck edge) Forward Well:— From forecastle bulkhead 3.600 and 2.900 mm (300 mm high) above deck.

State whether the freeing ports are fitted with shutters, bars, or rails, and give particulars of such:—

Additional area where sheer is less than standard.



© 2021

Lloyd's Register  
Foundation

Name of Ship

*RIVINA*

Freeboard Report Examined

(Date)

*Jan 1917*

Signed

*after*

0105 3/3

PARTICULARS OF PROTECTION TO OPENINGS, ETC.

my  
mt.

Hatchways on Freeboard and Superstructure Decks.

Description of Hatchway	DRY CARGO HOLD	HATCH ON TRUNK							
Dimensions of Hatchway	2300 x 2300	1140 x 840							
COAMINGS	Height above Deck	830	HEIGHT ABOVE TRUNK TOP THICKNESS	230					
	Thickness	10							
	Stiffeners	65x10		10					
	Brackets, Stays	(vertical)							
HATCH BEAMS	Number								
	Spacing								
	Scantling and Sketch								
	Bearing Surface								
FORE AND AFTERS	Number								
	Spacing								
	Unsupported Lengths								
	Scantling* and Sketch								
HATCH COVERS	Material	Steel cover		Steel cover					
	Thickness	10		10					
	How fitted								
	Bearing Surface								
Spacing of Cleats	Screws	390		380					
Number of Tarpaulins									

\*) Are wood fore and afters steel shod at all bearing surfaces?

Are tarpaulins in good condition and in accordance with rule requirements?

Are battens and wedges efficient and in good condition?

Are lashings provided in accordance with rule requirements?

\*) This cover has the same dimensions as the one on the MT "GLAN".

Particulars of any special features:—

DRAUGHT:—	DISPLACEMENT:— (EXTERNAL)	TONS PER INCH:—
75 % of depth	1000 tons	9.38
85 % -- --	1160 -- --	9.54
95 % -- --	1328 -- --	9.28

Sister ship:— The MT "GLAN", Class No. 1/3 Skensbæys Værk's  
yard No. 124.

Endorsement at first surveys and at surveys for renewal of Certificate:—

The fittings and appliances are in accordance with the particulars shown on this form (or as now modified) and are in good condition.

