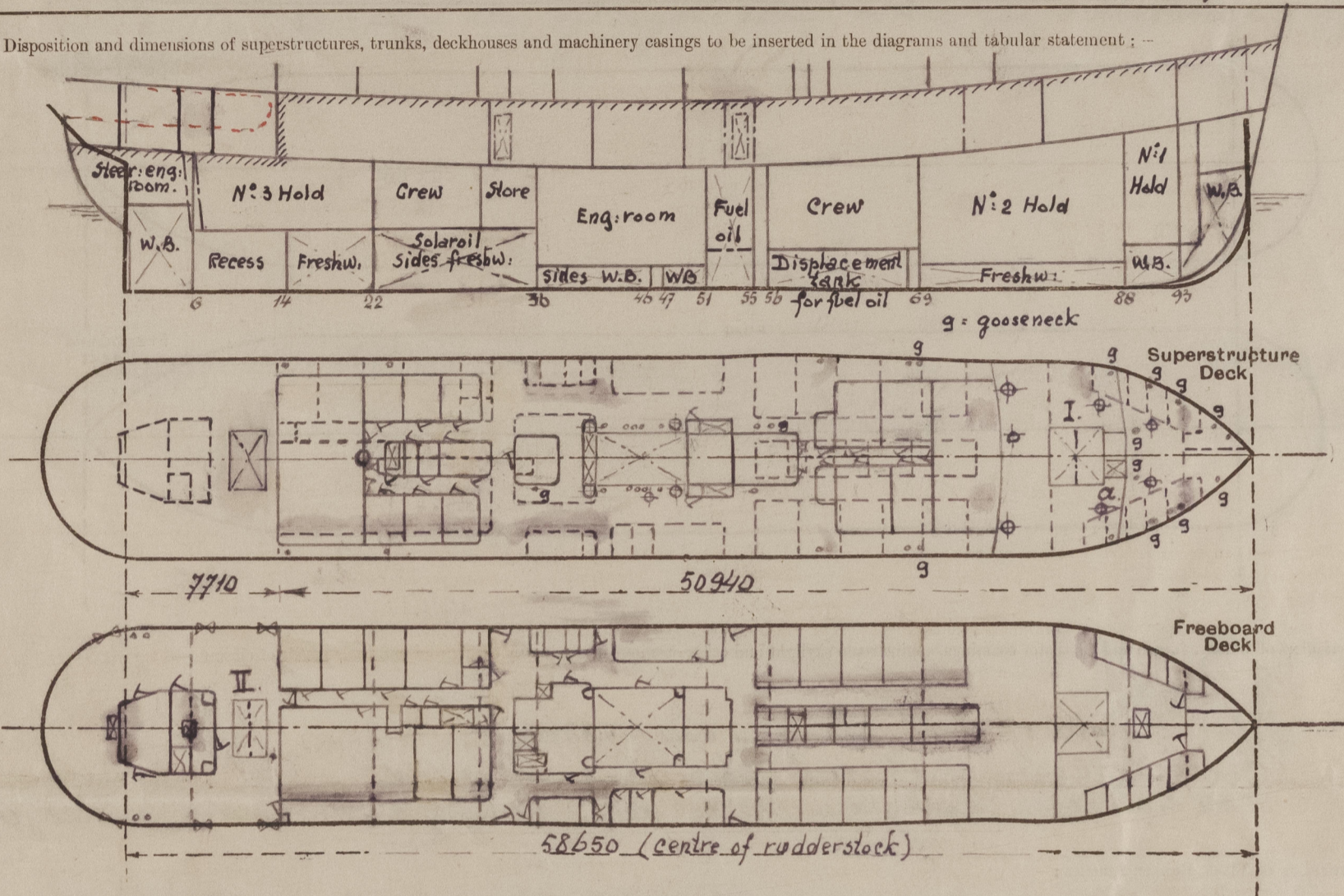


SURVEYS FOR FREEBOARD.
(CONDITIONS OF ASSIGNMENT.)

No 36367

Ship's Name *"BURDJAMHAL"* Port of Survey *Rotterdam*
Official Number *—* Surveyor's Signature *W J de Vries*
Nationality and Port of Registry *Indonesian; Djakarta* Date of Survey *while building*

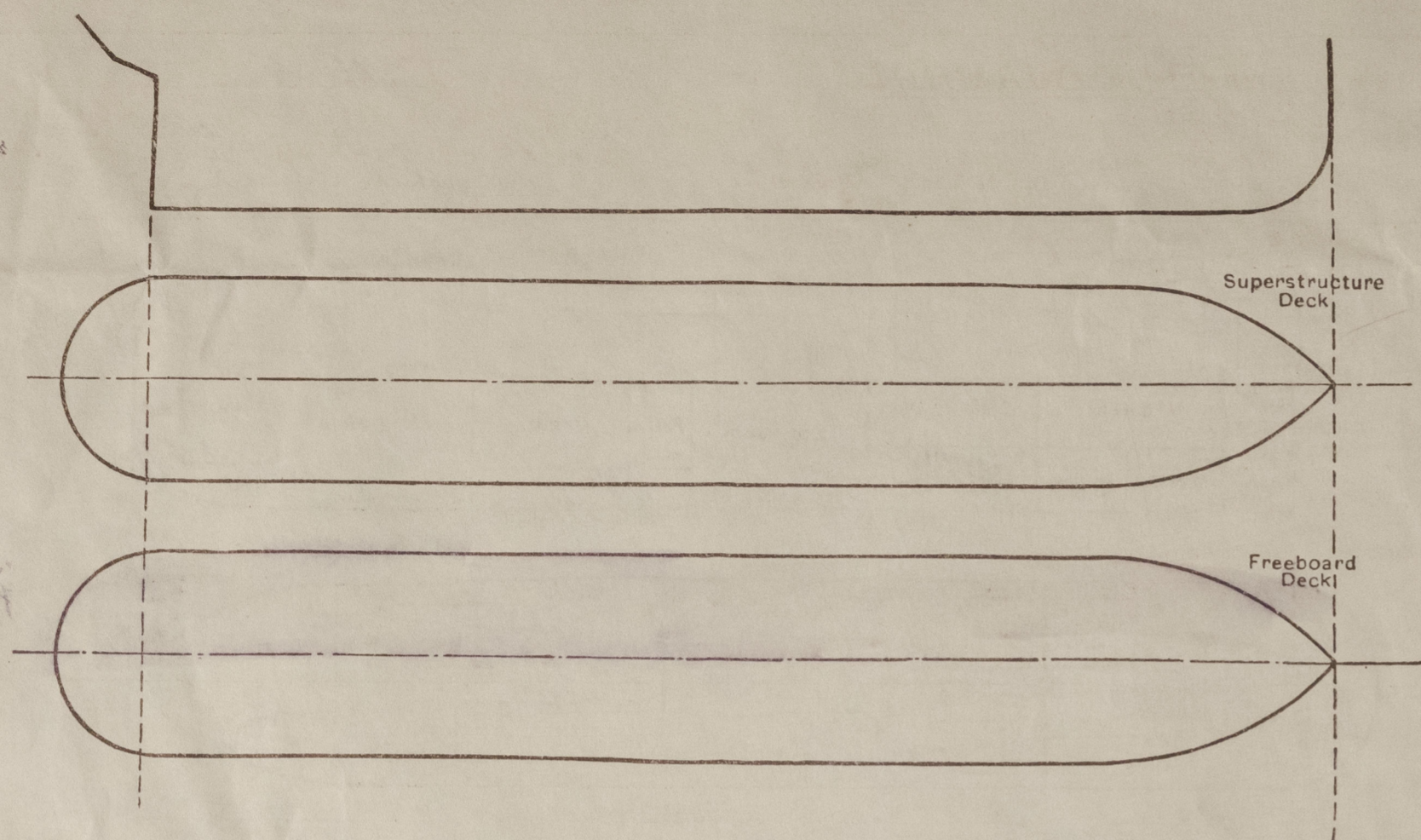
Disposition and dimensions of superstructures, trunks, deckhouses and machinery casings to be inserted in the diagrams and tabular statement: —



Particulars of Superstructures, Trunks, Casings, Deckhouses.								
	Coaming	Plating	Stiffeners	Spacing	End Attachments of Stiffeners	Size of Openings	Height of Sills	Height of Casings
Poop Bulkhead								
Raised Quarter Deck Bulkhead ...								
Bridge, After Bulkhead	8	6	4 100x65x7	630 - 850	EW	1630 ^{2x} x 790	230 - 270	2300
Bridge, Forward Bulkhead								
Forecastle Bulkhead								
Trunk, Aft								
Trunk, Forward								
NonExposed Machinery Casings on Freeboard or Raised Quarter Decks ...	8 ⁵	6	4 65x65x6	600	none	1420 ^{2x} x 680	440	2300
Exposed Machinery Casings on Superstructure Decks								
Machinery Casings within Superstructures not fitted with Class I Closing Appliances								
Deckhouses on Flush Deck Ships ...								

Particulars of Closing Appliances (state if capable of being manipulated from both sides).	
Poop Bulkhead	
Raised Quarter Deck Bulkhead ...	
Bridge, After Bulkhead	2 hinged steel w.t. doors, operable from both sides. ✓
Bridge, Forward Bulkhead	
Forecastle Bulkhead	
NonExposed Machinery Casings on Freeboard or Raised Quarter Decks ...	2 hinged steel doors, operable from both sides. ✓
Exposed Machinery Casings on Superstructure Decks	
Machinery Casings within Superstructures not fitted with Class I Closing Appliances	
Deckhouses on Flush Deck Ships ...	

The following diagrams should be used to indicate the positions of cargo and coaling hatchways, gangway, cargo and coaling ports, ventilators, companionways, etc., which would affect the seaworthiness of the ship :—



Particulars of fiddley, funnel and ventilator coamings, engine room skylight and other openings in machinery casing tops and their means of closing :—

no fiddley
Tunnel made of steel, strongly constructed.
Ventilator coamings of steel, strongly constructed.
Steel engine room skylight on bridge deck, strongly constructed: 6 steel flaps.

Particulars of Flush Bunker Scuttles :—

Rose fitted.

Particulars of Companionways :—

On bridge deck: 2 each side of deckhouse and ships 1 wood hinged door, operable from both sides; sill 490 mm. Aft in non exposed position still 1 wood door on stb side, sill 310 mm; operable from both sides. All gave access to bridge space.
On foreboard deck: 2 stb side of deckhouse aft 1 steel hinged w.t. door, operable from both sides; sill 275 mm.

Particulars of Ventilators in exposed positions on freeboard and superstructure decks :—

Forecastle deck: 2 x ϕ 8", height 915 mm ✓
 2 x ϕ 10", " 915 mm ✓
 1 x ϕ 15", " 915 mm ✓
 2 derrick posts ϕ 20", extending far above boat deck. ✓
 Bridge deck: 4 x ϕ 24", extending above boat deck.
 1 x ϕ 8", height 800 mm.

Deckhouses on superstructure deck torpedo vaults, sufficiently high placed:
Further have several goosenecks been placed: from forward $2 \times \phi 6"$, height 520 mm;
 $4 \times \phi 4"$, height 460 mm; $2 \times \phi 4"$, height 660 mm; $2 \times \phi 4"$, height 509 mm; $2 \times \phi 4"$, height
760 mm; $2 \times \phi 2"$, height 880 mm; $1 \times \phi 2"$, height 690 mm; $1 \times \phi 4"$, height 720 mm.

All ventilators and goosenecks provided with wood covers and canvas.
Freeboard deck: at stern steel skylight with 2 steel hinged w.t. flaps; sill 700 mm
above deck. Air Pipes in exposed positions on freeboard raised quarter of superstructure decks: —

Particulars of Air Pipes in exposed positions on freeboard, raised quarter, or superstructure decks:—

Air pipes on freeboard deck (aft), height 915 mm.
" " superstructure deck, height 760 mm.

Airpipes on ballast tanks with wood plugs.
" " oil fuel tanks with gas caps and canvas.

Particulars of Gangway Cargo and Coaling Ports:—

In each side of bridge 2 hinged w.t. steel doors, strongly constructed, 1800 x 700 mm; 8 dogs; sill 290 mm from steel deck.

Particulars of Scuppers and Sanitary Discharge Pipes :—

All scuppers and sanitary discharges from spaces on freeboard deck and superstructure decks leading overboard with brose screw down non return valves on ships side, operated from above freeboard deck with open-shut indication, except in way of engine room, where all valves are easily accessible.

Particulars of Side Scuttles :—

Side scuttles below foreboard deck of fixed type with hinged steel deadlights.
 " above " of normal type " " " "

Vertical distance of Sill of lowest Side Scuttle above top of keel

3900 mm

Particulars of Guard Rails :—

On forecastle bulwark, height 1000 - 700 mm; further rail, height 1150 mm of $\phi 1\frac{3}{4}$ " pipe + 4 - $\frac{3}{4}$ " rods. ✓
On bridge partly bulwark, height 1100 mm, partly rail of same height and construction as mentioned above.
On freeboard deck (aft) strong steel bulwark, efficiently supported. ✓

Particulars of Gangways, Lifelines, etc. :—

Particulars of Freeing Arrangements.						
	Length of Bulwark <i>m</i>	Height of Bulwark <i>mm</i>	Size of Freeing Ports <i>mm</i>	Number each side	Area each side	Rule area each side
After Well	<i>7.71 m</i>	<i>1100</i>	<i>700 x 480</i> <i>1100 x 230</i>	<i>2</i> <i>1</i>	<i>.925 m²</i>	<i>.839 m²</i>
Forward Well	—	—	—	—		

State position of each freeing port { After Well:— *480 type sill 180 mm, 230 type 260 mm;*
(F. and A. position and height above deck edge) { Forward Well:— *for position see sketch.*

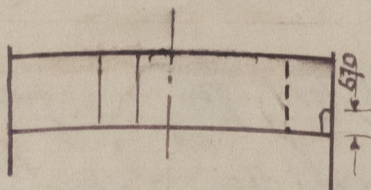
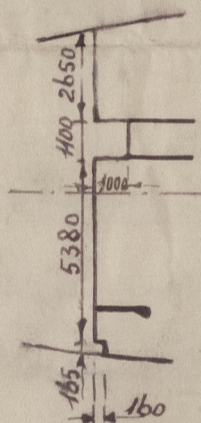
State whether the freeing ports are fitted with shutters, bars, or rails, and give particulars of such:— *480 type with shutters*
230 " no shutters nor bars. ✓

Additional area where sheer is less than standard. —

PARTICULARS OF PROTECTION TO OPENINGS, ETC.

HATCHWAYS ON FREEBOARD AND SUPERSTRUCTURE DECKS.									
Description of Hatchway		on deck	I on forecastle	II on freeboard deck					
Dimensions of Hatchway		880 x 825	2800 x 3000	1800 x 3000					
COAMINGS	Height above Deck	675 mm ✓	675 mm ✓	675 mm ✓					
	Thickness { Sides	8 mm	11 mm	11 mm					
	Stiffeners	—	150 x 75 x 8	150 x 75 x 8					
	Brackets, Stays	—	—	none					
HATCH BEAMS	Number	—	1	1					
	Spacing	—	1400 mm	900 mm					
	Scantling and Sketch	—	150 x 11 220 x 8 150 x 11	150 x 11 220 x 8 150 x 11					
	Bearing Surface	—	85 mm	85 mm					
FORE AND AFTERS	Number	—	—	—					
	Spacing	—	—	—					
	Unsupported Lengths	—	—	—					
	Scantling* and Sketch	—	—	—					
HATCH COVERS	Material	Steel	fir	fir					
	Thickness	65 mm	60 mm	60 mm					
	How fitted	hinged	longitudinal	longitudinal					
	Bearing Surface	—	65 mm	65 mm					
Spacing of Cleats		4 dogs	510 mm	510 mm					
Number of Tarpaulins		w.t.	2 w.o.	2 w.o.					
<p>Covers</p> <p>*Are wood fore and afters steel shod at all bearing surfaces? yes</p> <p>Are battens and wedges efficient and in good condition? yes</p> <p>Are tarpaulins in good condition and in accordance with rule requirements? yes</p> <p>Are lashings provided in accordance with rule requirements? yes</p>									

Particulars of any special features:—



In deck house on freeboard.
deck tunnel escape with
w.t. steel hinged cover.
Entrance to deck house on p.s.
with hinged steel door,
operable from both sides; sill
280 mm.

Endorsement at first survey and at surveys for renewal of Certificate:—

The fittings and appliances are in accordance with the particulars shown on this form (or as now modified) and are in good condition.

Note: The air pipes of the displacement tanks (2 air pipes on each side $\phi 3"$) have been provided on bridge deck with a gate valve.
The displacement tanks can be brought in connection with the sea by each a $6" \phi$ valve.



© 2021

Lloyd's Register
Foundation