

BALANCED STREAMLINE RUDDER. M. V. N° 1070.

SCALE 1" = ONE FOOT. DETAILS AS INDICATED.

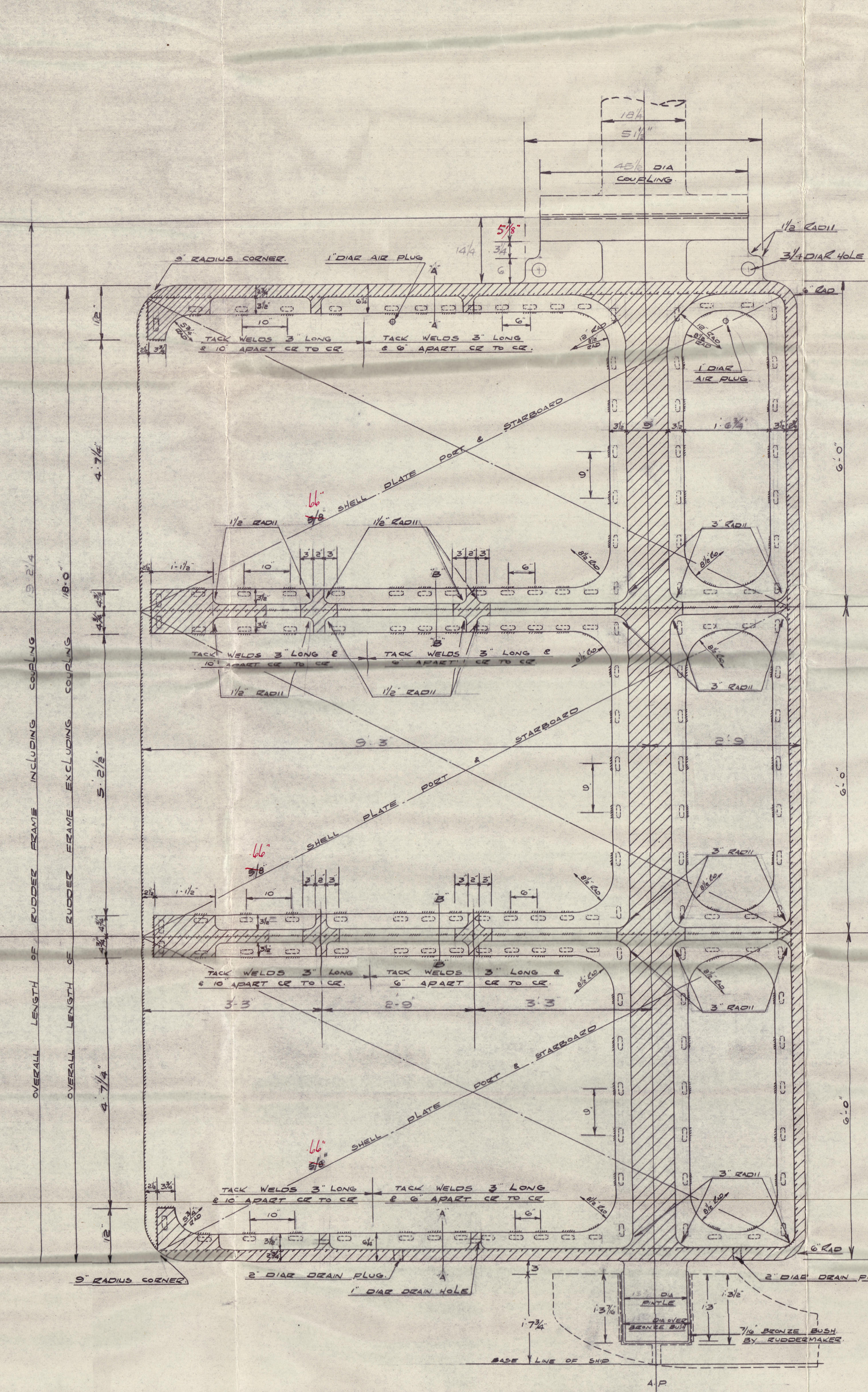
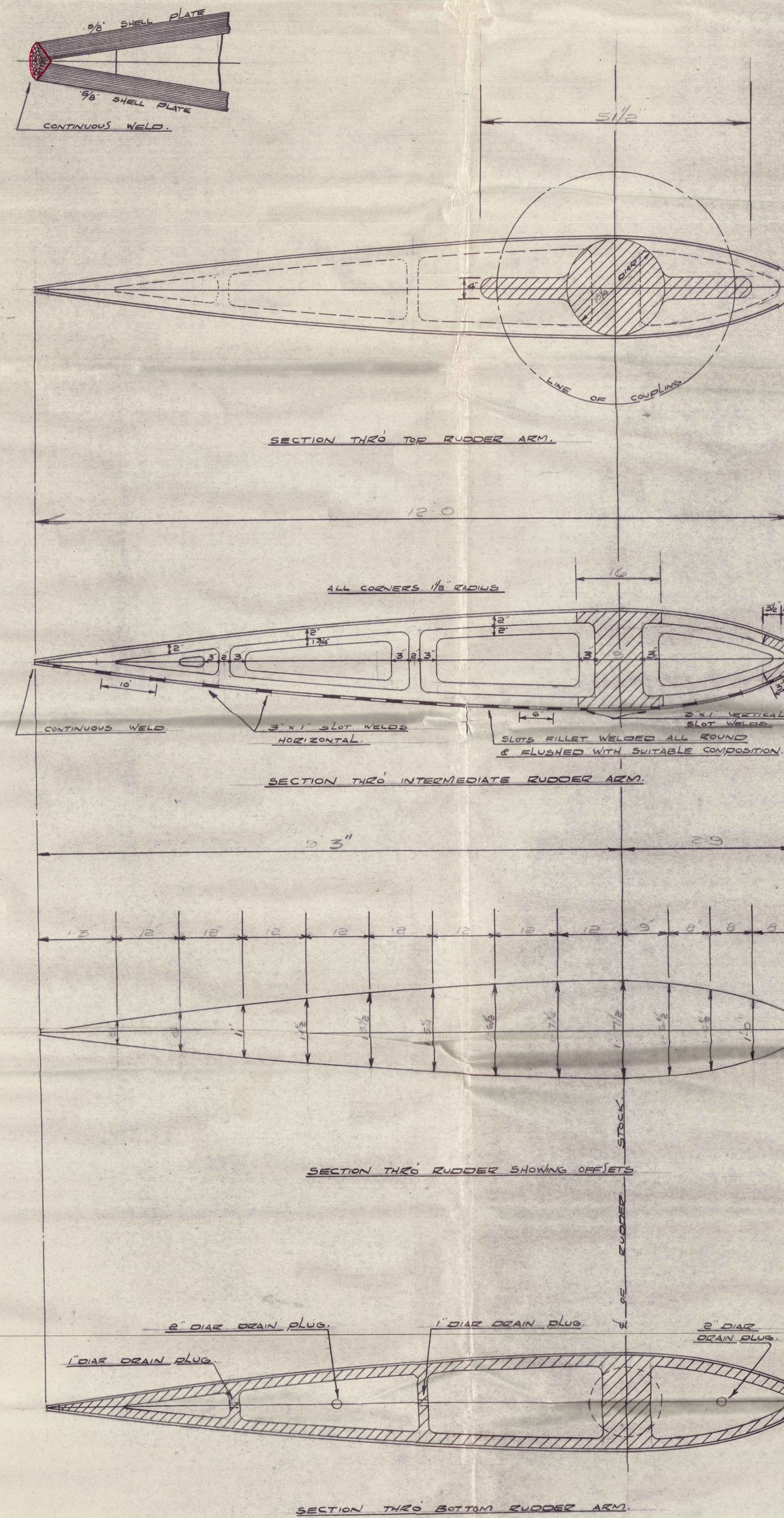
RUDDER FRAME :- BEST QUALITY STEEL CASTING.
RUDDER STOCK :- BEST QUALITY FORGED STEEL.

DIMENSIONS :- 587.0 S.P. x 72.9 MLD x 37.6" MLD TO UPPER DECK.
TO CLASS 100 A1 AT LLOYDS SPECIAL SURVEY FOR CARRYING PETROLEUM IN BULK.
TO LOAD ORIGIN 25.0". SPEED 15 KNOTS.
IMMERSED AREA OF RUDDER 216. RUDDER 18.0 x 18.0.
IMMERSED AREA OF RUDDER STOCK 18.0 x 9.25 = 166.5 x 4.838 = 79.7.
IMMERSED AREA FOR " OF RUDDER STOCK 18.0 x 7.5 = 135.0 x 1.972 = 266.2.
DIAMETER OF STOCK TO RULE = 12 5/8" + 10% FOR TANKER = 13 7/8".
DIAMETER OF STOCK IN WAY OF STUFFING BOX = 16 1/2".
STOCK INCREASED 1/4" IN WAY OF STEERING GEAR = 14 1/2".
RUDDER STOCK TO BE ACCURATELY TURNED TO PARTICULARS GIVEN.
RUDDER FRAME TO BE ACCURATELY CAST TO SHAPE AS PER DETAILS.
KEYWAYS ETC. TO BE CUT IN RUDDER STOCK & COUPLING TO PARTICULARS GIVEN.
RUDDER NOT TO EXCEED GIVEN SCANTLING. EXCESS DWT. ESTIMATED WEIGHT WILL NOT BE PAID.
PATTERN OF RUDDER FRAME TO BE APPROVED BY SURVEILLORS DESIGNED BEFORE CASTING.

CONSTRUCTION NOTE:-
RUDDER FRAME TO BE LAID ON TOP OF BOTTOM RUDDER
SHELL PLATE & TO BE WELDED TO FRAME AS INDICATED.
ALL INSIDE SURFACES OF RUDDER TO BE COATED WITH
BITUMINOUS SOLUTION. TOP PLATE TO BE LAID IN POSITION
& ENTIRE RUDDER WELDED COMPLETE AS INDICATED.

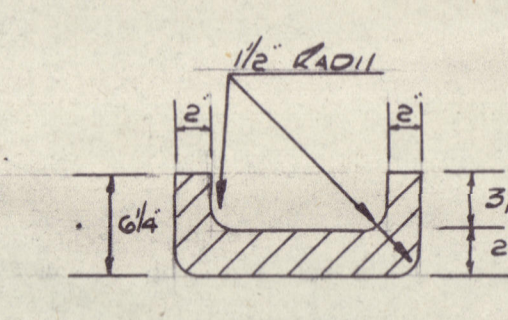
NOTE:- BUSHES TO BE TURNED IN ONE PIECE & PROPERLY
SHRUNK ON PINTLE & STOCK BY RUDDERMAKER.

NOTE:- WHEN FLOATING RUDDER CLEARANCE TO BE LEFT
BETWEEN BOTTOM OF STEELFRAME & BOTTOM OF PINTLE
TO ENSURE THAT RUDDER CARRIER IS BEARING.
ENTIRE WEIGHT OF THE RUDDER.

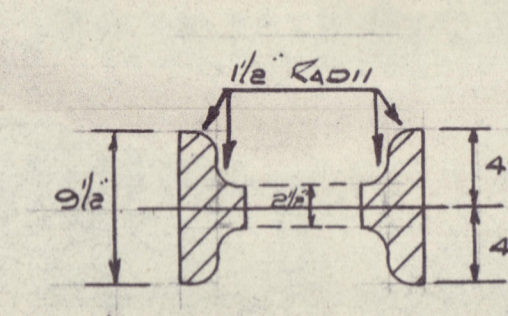


HEIGHT OF DECK ABOVE BASE LINE OF SHIP 34.0
LENGTH OF RUDDER STOCK ABOVE DECK MLD 5.6
TOTAL LENGTH OF RUDDER ABOVE BASE LINE 39.6
HEIGHT TO BOTTOM OF RUDDER STOCK 31.1
TOTAL LENGTH OF RUDDER STOCK 14.5

WELDING:-
TACK WELDS 3" LONG SPACED 6" APART
FORWARD & 10" APART AFT CES. HORIZONTALLY
& 6" APART VERTICALLY ON BOTTOM PLATE
SHELL WELDS 3" LONG SPACED 6" APART
FORWARD & 10" APART AFT CES. HORIZONTALLY
& 6" APART VERTICALLY ON TOP PLATE

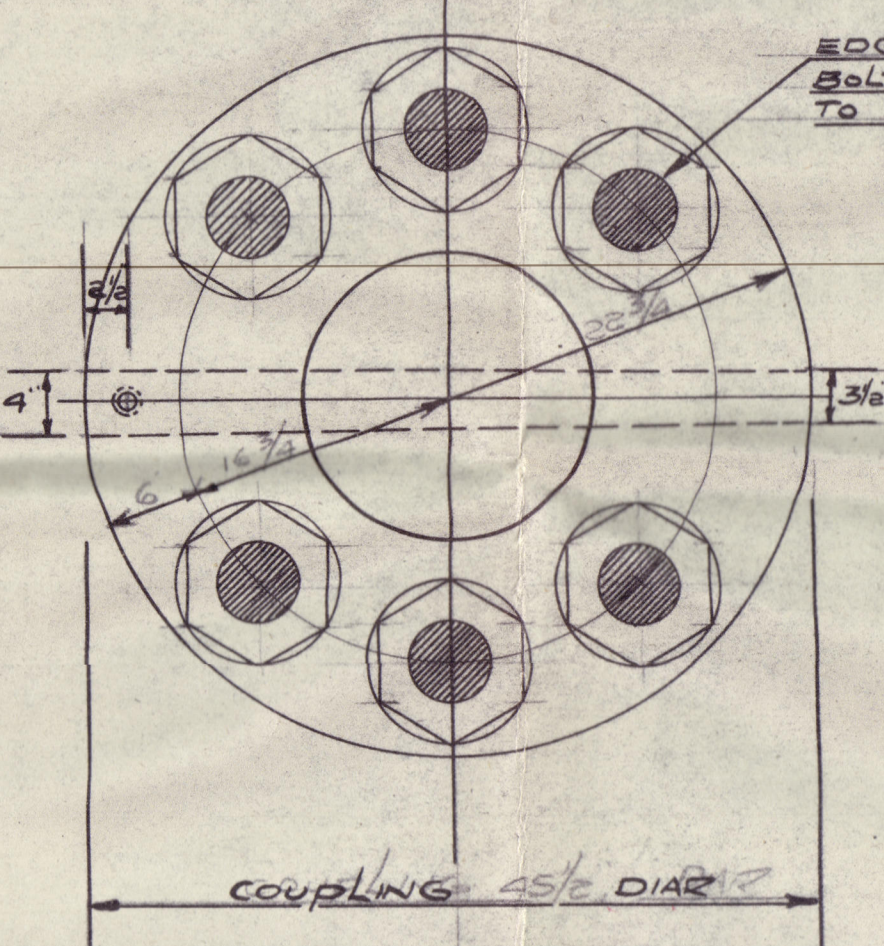


SECTION TWO A.A.
Coupling faces closed to surveyor's satisfaction.

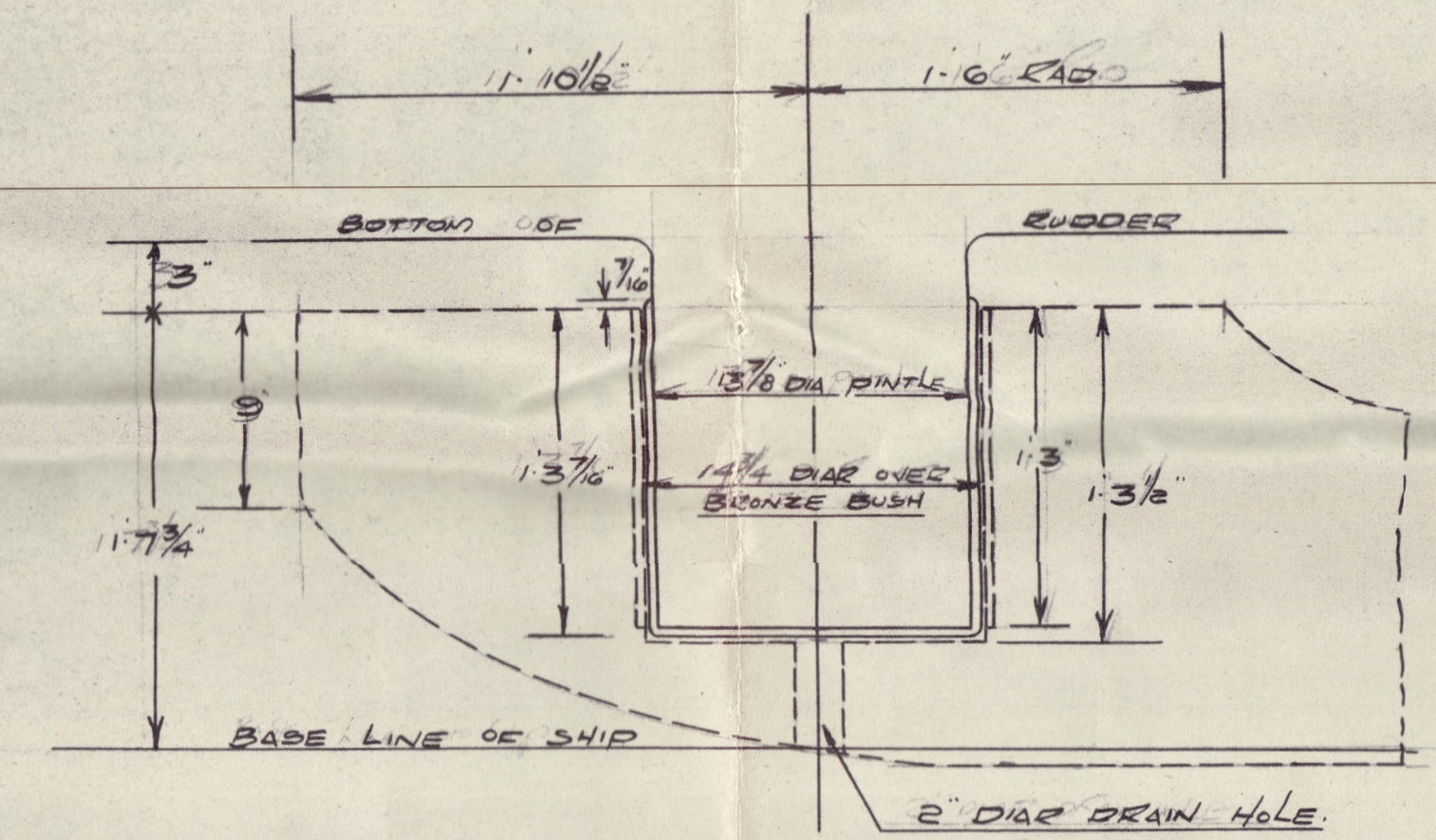
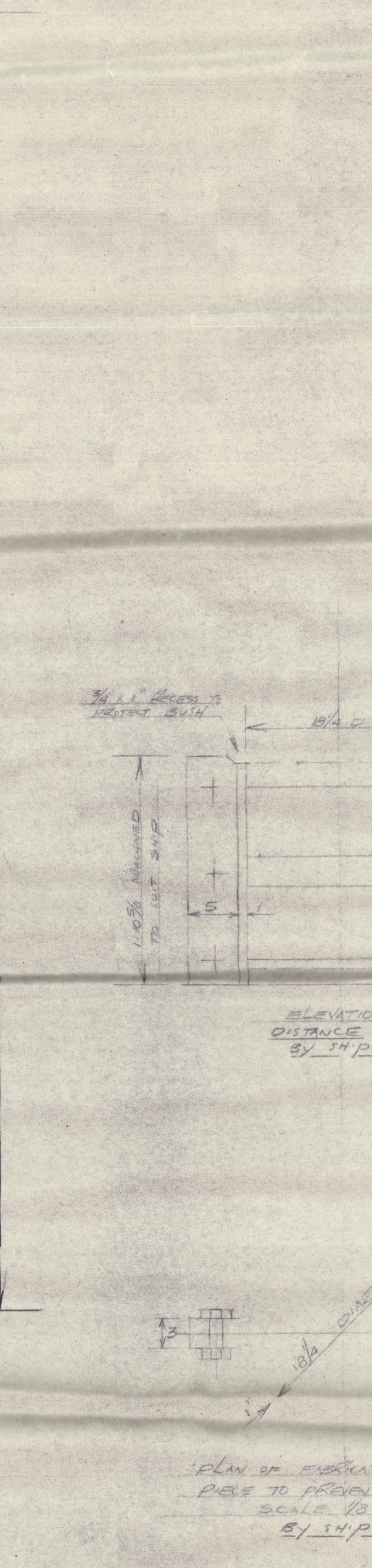
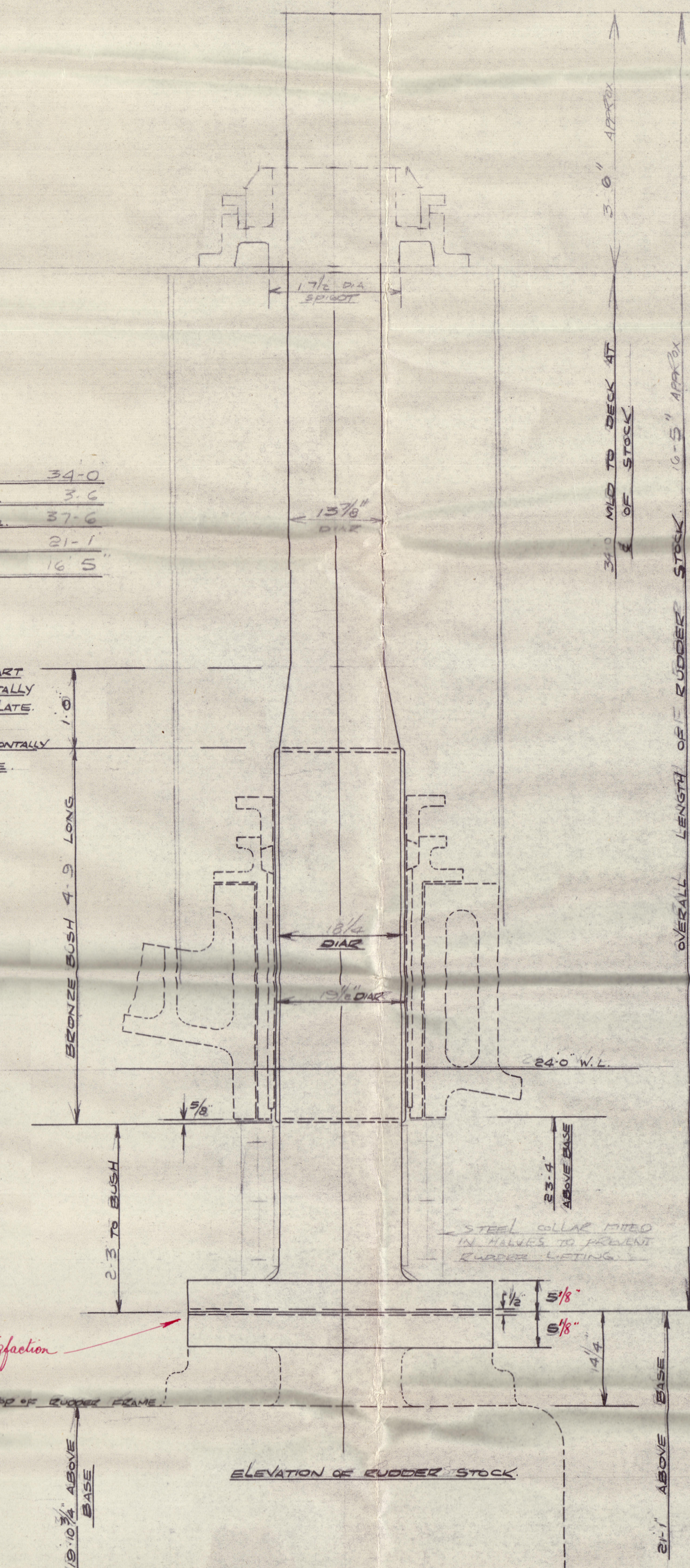


SECTION TWO B.B.

DETAIL OF RUDDER COUPLING.
RUDDER COUPLING TO BE SUPPLIED BY
RUDDERMAKER, SAVING SURFACES TO BE
MACHINED COUPLING 12 1/2" DIA. FLANGES 5 1/2"
THICK 9.000" 12.000" DIA. FITTED STEEL RAILS
EFFICIENTLY LOCKED WITH COTTER PIN.
BOLTS 1 1/2" PITCH SPACED. CARE TO BE
TAKEN BOLTS DO NOT FORM COUPLING KEY
KEY AT AFT END TAPERING TO 3/8" AT
FORWARD END KEY TO BE DRIVEN FROM
AFT END & SUPPLIED BY RUDDERMAKER
1 SET SCREW TO KEY (NOT REQUIRED BY RULE)




PLAN VIEW OF COUPLING.
FACES OF COUPLING TO BE CLOSED TO SURVEYOR'S SATISFACTION.



DETAIL OF BOTTOM PINTLE
SCALE 1/2" = ONE INCH.

APPROVED
LLOYDS REGISTER OF SHIPPING
REGISTERED WITH
THE BRITISH PATENT OFFICE
J. & W. LLOYD
9/12/50


M/M. 9967 

Lithgow No 1070

RECORDS DEPT
LONDON

7

Rudder

Mr "Beaford" 

Glasgow Visit Entry Ref 24954.

009962-009975-0106

© 2021



Lloyd's Register
Foundation