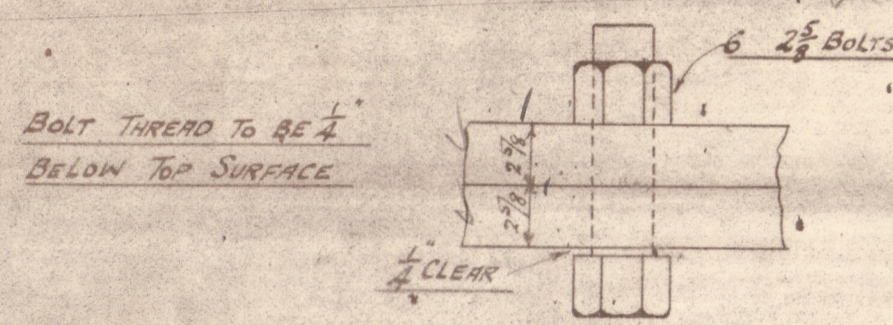


5.11.08

SS N° 162 FORGED RUDDER FRAME

SCALE 1/2" = 1 FOOT

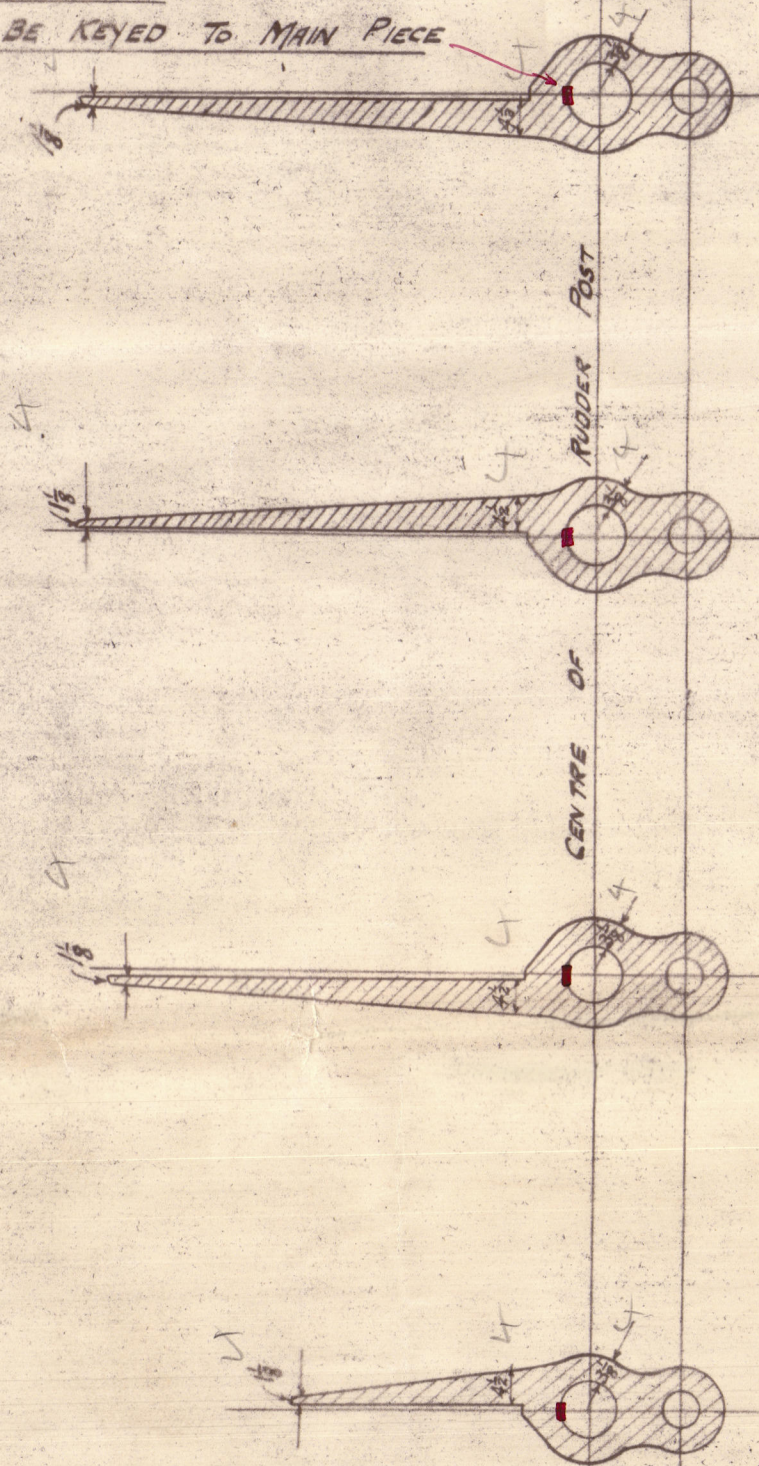
LENGTH OF RUDDER	
BASE TO TOP OF POOD UDD	40-10
RUDDER ABOVE DECK	3-2 1/4
DECK PLATING	1/2
LESS	1-9 3/8
TOTAL LENGTH OF RUDDER	42-3 3/8



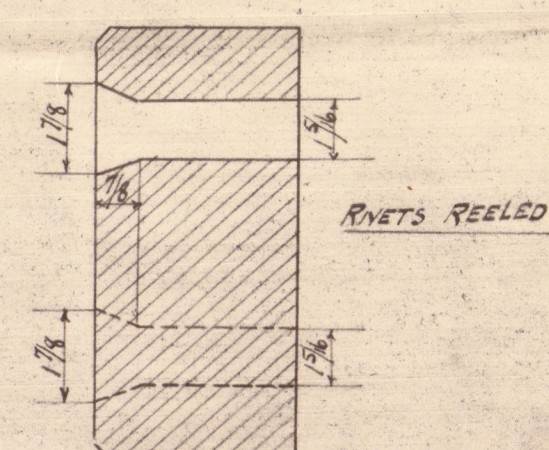
NOTE: THREAD OF COUPLING BOLTS
TO BE V SHAPE THUS
NUTS FITTED WITH TAPERED PINS

Speed under 12 knots.

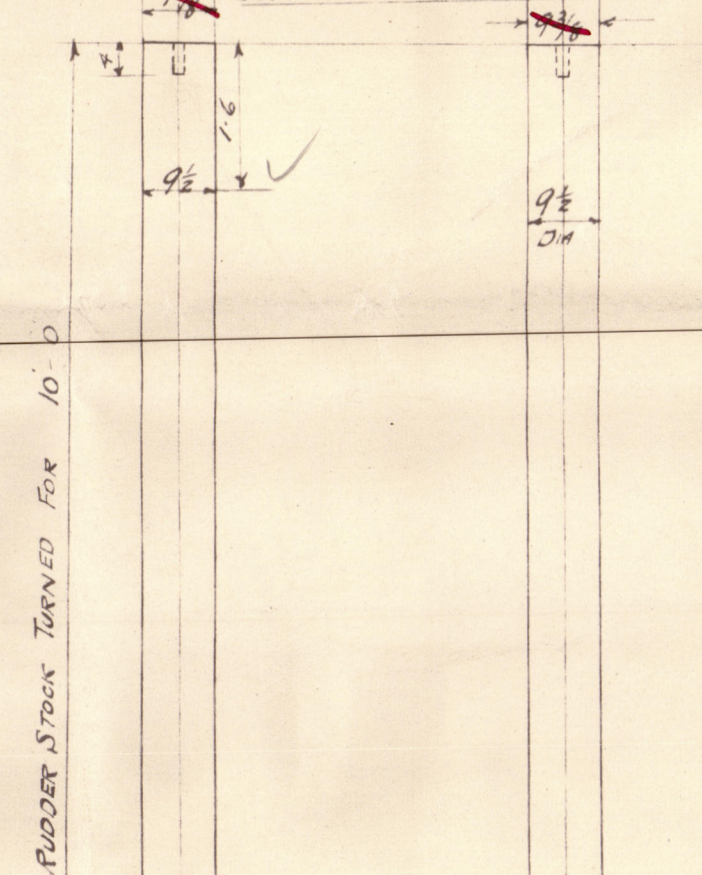
NOTE: ARMS FITTED ALTERNATELY
ON OPPOSITE SIDE OF PLATE TO BE
MADE SO AS TO ALLOW PLATE 1/8" THICK
TO REEVE EASILY
ARMS TO BE KEYS TO MAIN PIECE



SECTION THRU ARMS
SHOWING RIVET HOLES



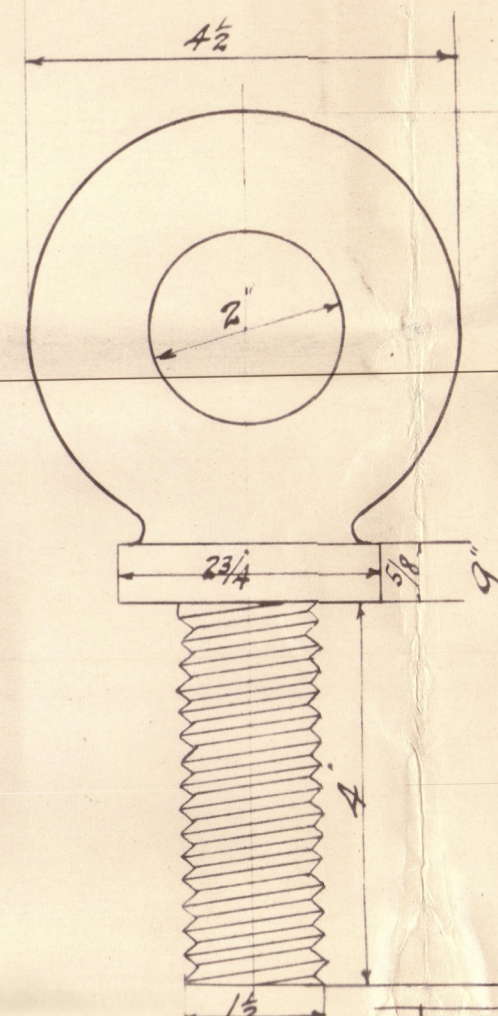
HOLE TAPPED IN TOP OF RUDDER STOCK
TO TAKE SCREEN BOLT
BOLT SUPPLIED BY SHIPBUILDERS



DETAIL OF SCREEN BOLT
IN TOP OF RUDDER POST
SCALE 1/2" SIZE

NOTE: 2" KEY IN COUPLING
TAPERED TO 2" x 1/8"
FROM RT END

TOTAL LENGTH OF RUDDER 42-3 3/8

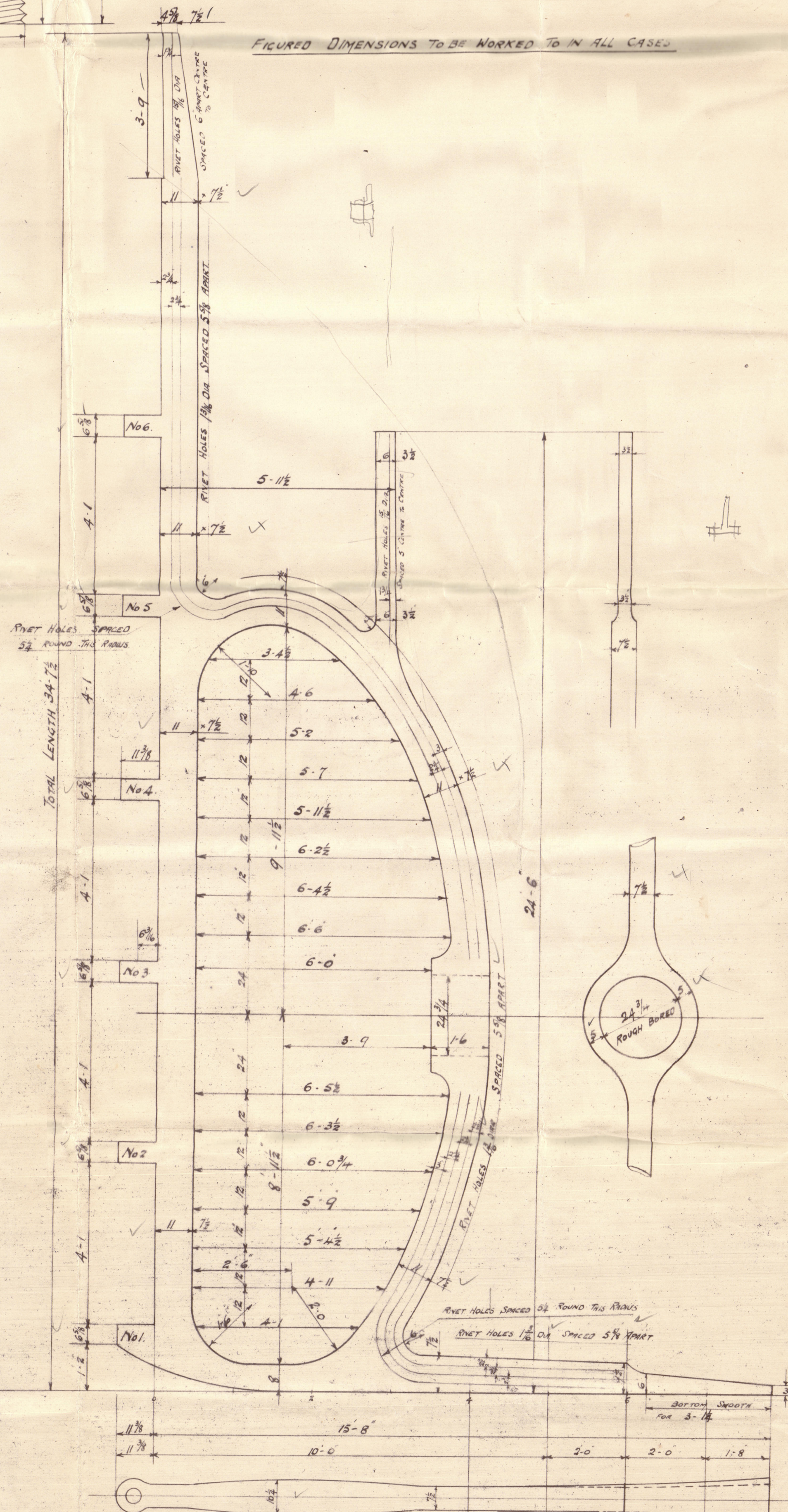


SS N° 162 FORGED STERN FRAME

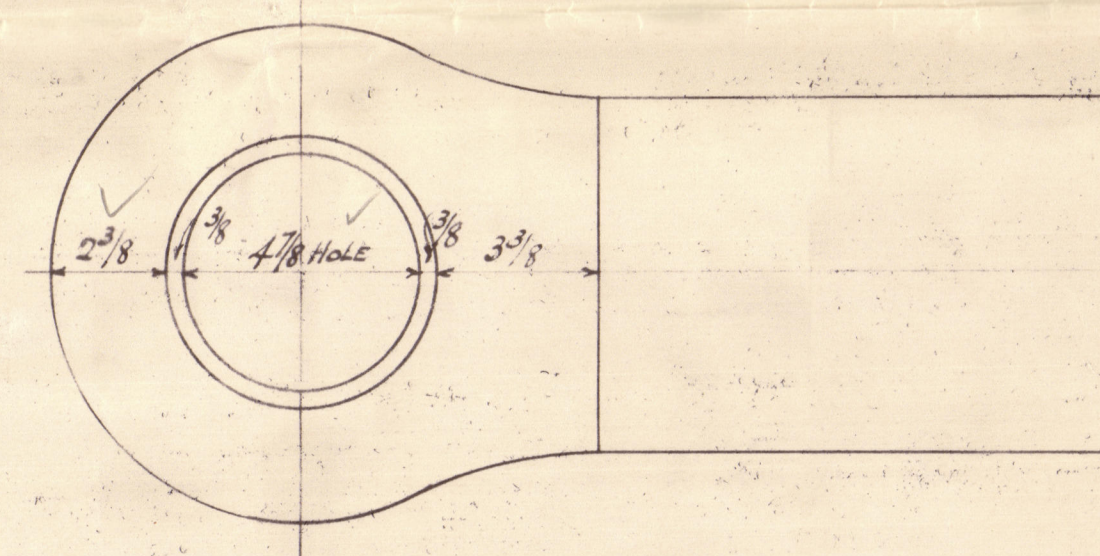
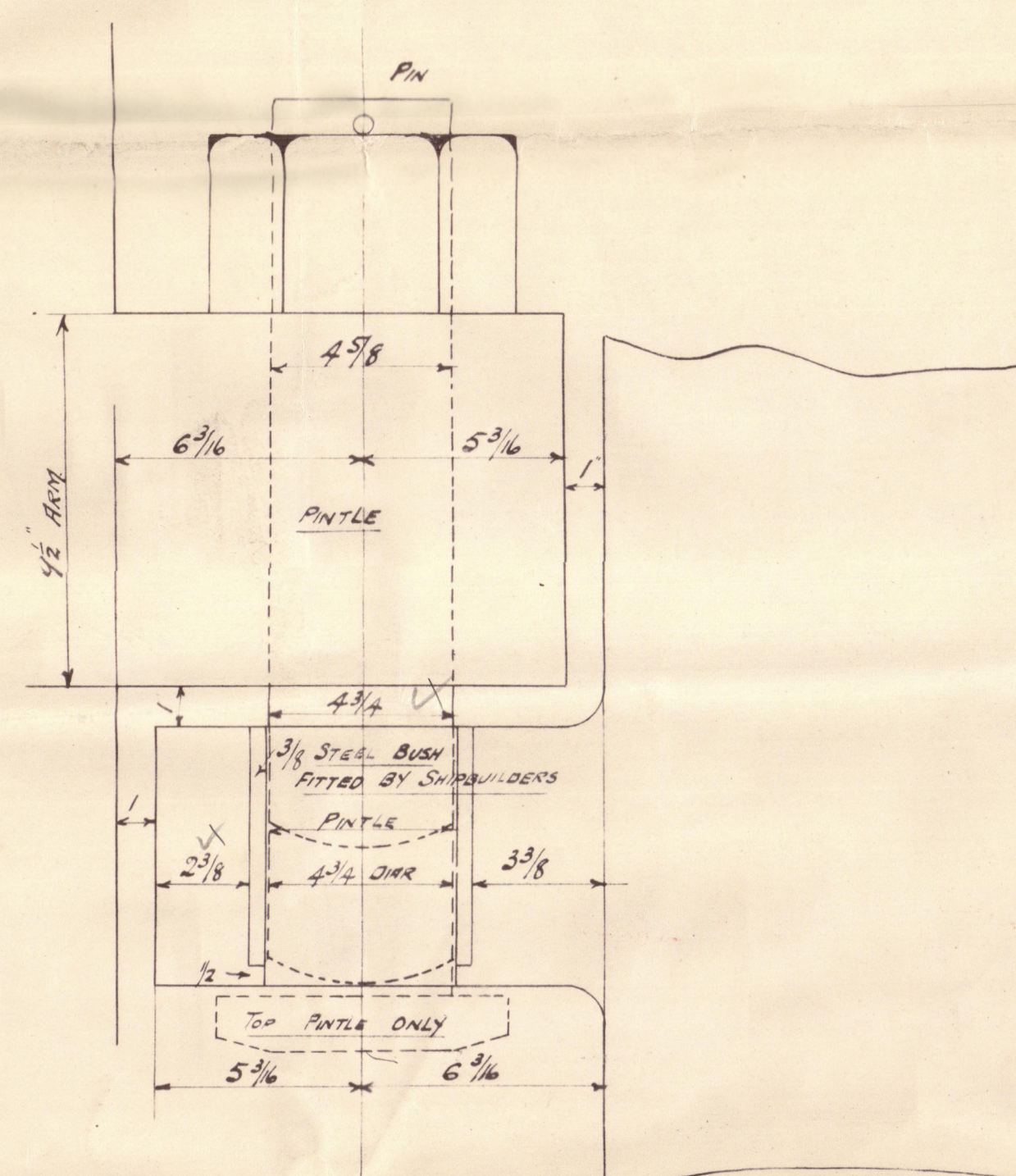
SCALE 1/2" = 1 FOOT

TO PASS LLOYDS TESTS

FIGURED DIMENSIONS TO BE WORKED TO IN ALL CASES



SKETCH OF TOP GUIGEON



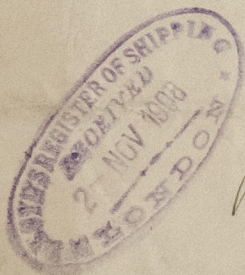
SKETCH OF GUIGEON
SCALE 3" = 1 FOOT

C.B.
5.11.08

11/11/08

DATE 20.12.08
No. 3141
LLOYD'S REGISTER FOUNDATION

Northumberland S.E.
S.P. No 162
Lafet Reader
Strepame.



Notes.

"DESLOCK" *CL*

Ex.
S.P. Ervingtoni Coast

Newcastle Report

No 57167



© 2021

Lloyd's Register
Foundation