

Nos 31 & 32.

RUDDER FRAME.

LOWER PORTION OF FRAME OF BEST FORGED SCRAP IRON.
TOP PORTION OF INGOT STEEL, ARMS TO BE SHRUNK ON.

ALL TO BE MADE TO LLOYD'S REQUIREMENTS & TO BE INSPECTED & PASSED BY THEIR SURVEYOR & OUR REPRESENTATIVE BEFORE LEAVING MAKERS WORKS.

AREA OF RUDDER 94.81 SQ. FT.
CENTRE LINE OF FINTLES 40° OF MAINPIECE: 7 1/16 INS.
CENTRE OF GRAVITY 4 1/2 OF FINTLES 4 1/2 FT.
 $A \times D = 94.81 \times 41 = 388.72$
SPEED 10-12 KNOTS.

RULER DIA OF RUDDER HEAD 9"
RUDDER STOCK 9 1/2 DIA (OWNERS REQUIREMENTS)

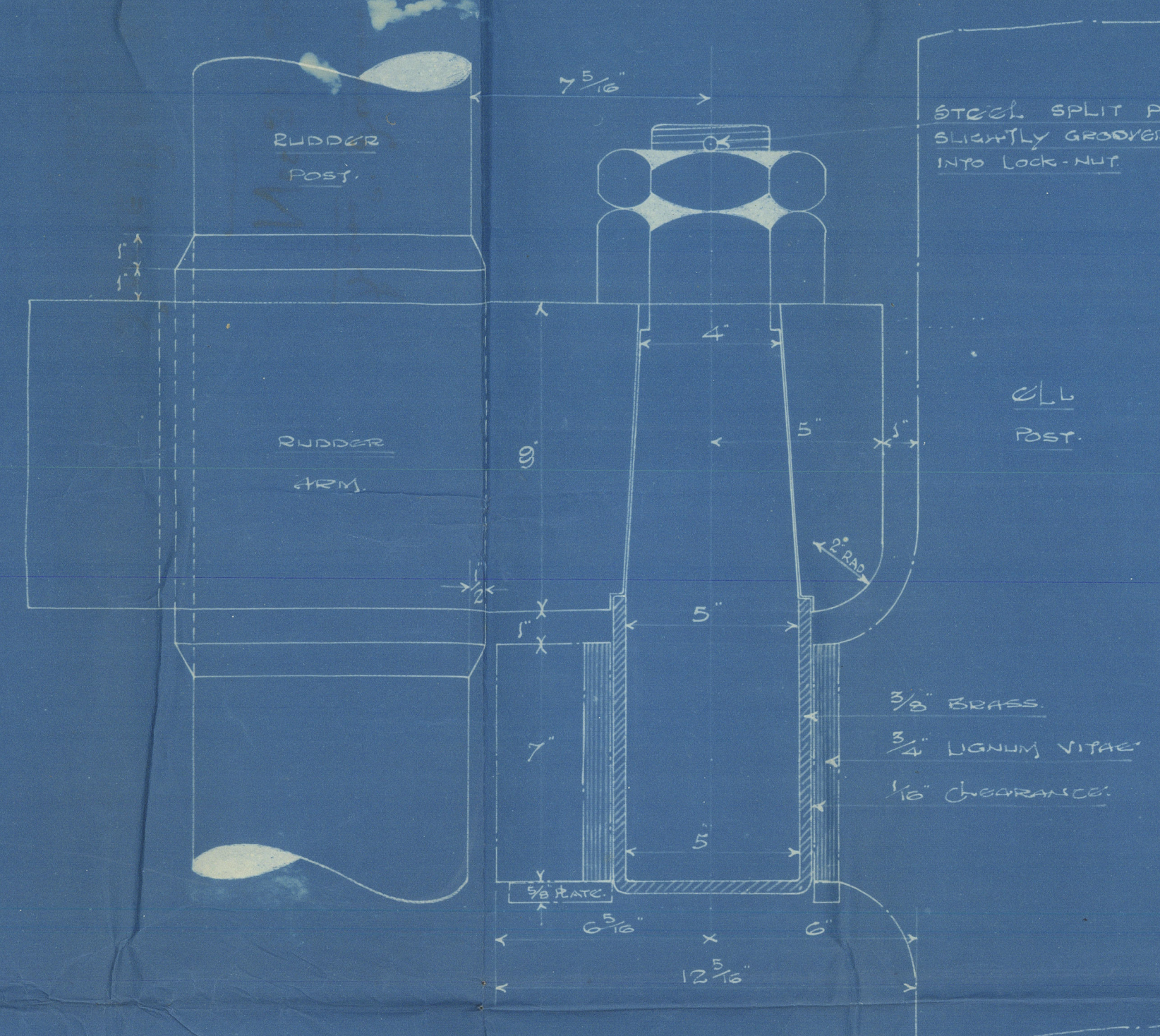
IF PRACTICABLE RUDDER PLATE IS TO BE HYDRAULICALLY RIVETED.

RUDDER STOCK & MAINPIECE TO BE OF FORGED STEEL IN TWO PARTS.
STOCK & MAINPIECE COUPLED TOGETHER WITH 6 BOLTS 2 1/2 DIA.
STOCK TO BE TURNED FOR DEBITAGE SHOWN & SWELLED 1/4 ALL ROUND IMMEDIATELY ABOVE COUPLED SHIPING FOR 3 CARRIES AS SHOWN.
RUDDER ARMS TO BE OF FORGED STEEL, SHRUNK ON & KEYED TO MAINPIECE.
RUDDER ARMS TO BE DRILLED FOR 1 1/2 RIVETS, COUNTERSUNK ON OUTSIDE OF ARMS.
PORTABLE FINTLES OF TURNED STEEL, TAPERED IN RUDDER GUDGEONS & SCREWED UP TIGHT WITH NUTS, LOCK NUTS & SPLIT PINS AS SHOWN.
FINTLES TO HAVE 3/4" SPACES HERE AS SHOWN.
LOOKING HEAD ON TOP FINTLE ONLY.
GARS TO BE TAKEN THAT CENTRE OF FINTLES ARE IN LINE, SO THAT THE RUDDER WILL BE A GOOD WORKING FIT & ALSO TO BE SQUARE TO BASE LINE.
NO STOPS ON RUDDER FRAME.
RUDDER FRAME TO BE FITTED TO STERN FRAME OR MADE TO TEMPLATE TAKEN FROM STERNFRAME.
COUPLING TO BE MACHINED & TO BE A GOOD FIT.

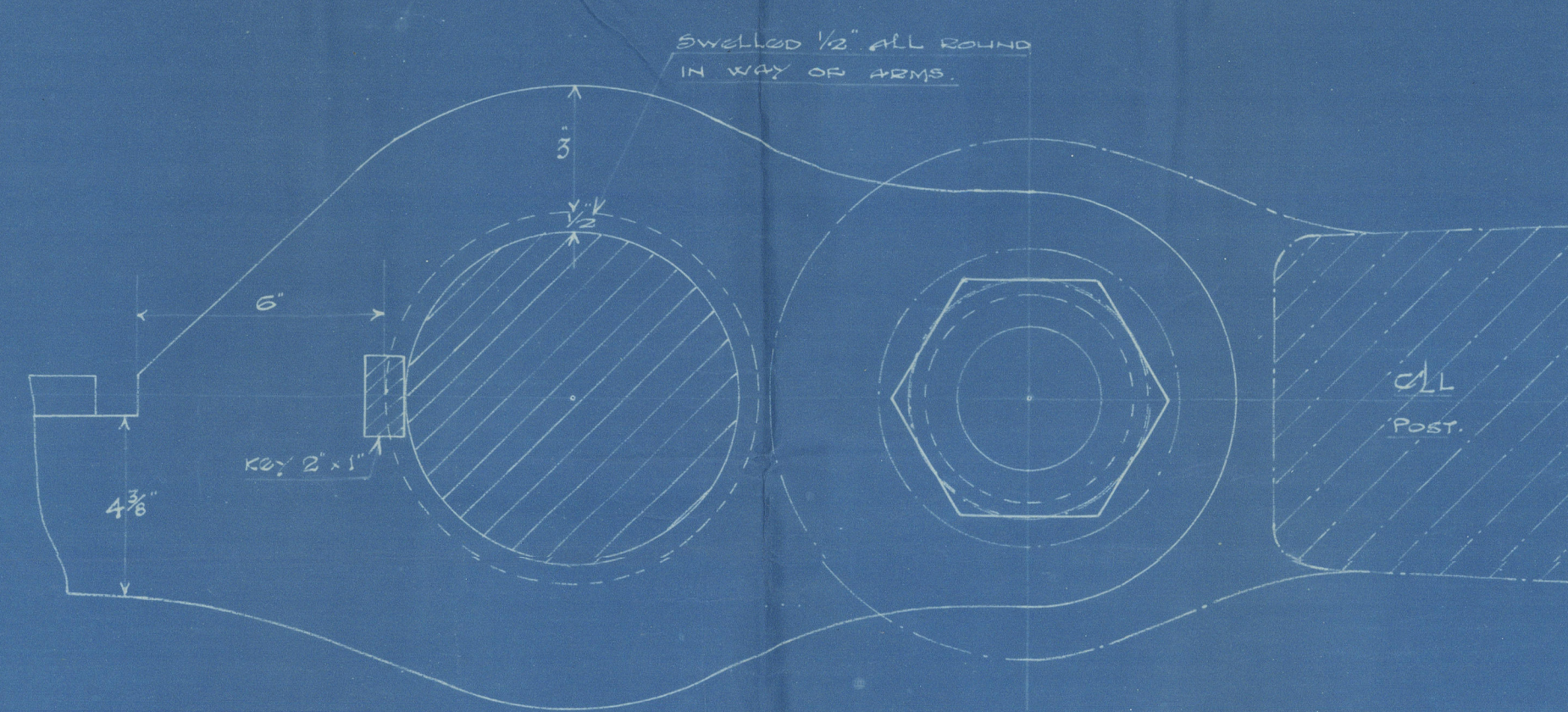
WRITTEN DIMENSIONS ONLY TO BE TAKEN.

ALL MACHINING & DRILLING TO BE DONE BY MAKERS.
ALL POST MARKERS TO SUPPLY RUDDER MARKERS WITH PARTICULARS OF SPACING OF GUDGEONS AS SET, ALSO GAUGE FOR FINTLES.
RUDDER MARKERS TO FIT ARMS & TURN FINTLES TO THESE PARTICULARS.
RUDDER FINTLES MUST BE IN A STRAIGHT LINE.

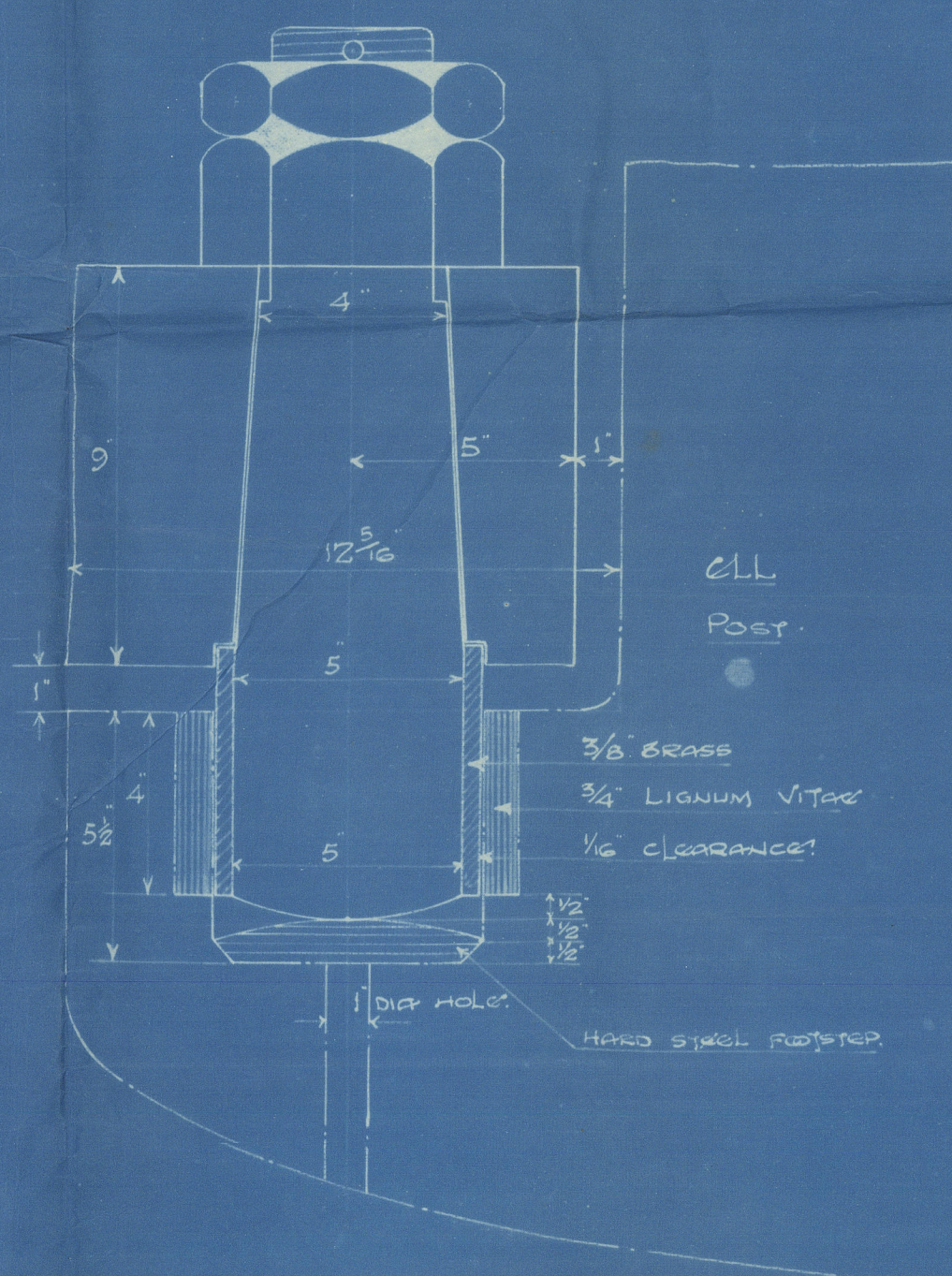
Any alteration to be notified to THE FURNACE ENGINEERING CO LTD
DIMENSIONS SHOULD BE CAREFULLY WRITTEN TO THE VESSEL ONLY BY ON WEIGHTS CALCULATED TO THESE DIMENSIONS.



ELEVATION OF MIDDLE GUDGEON & FINTLE

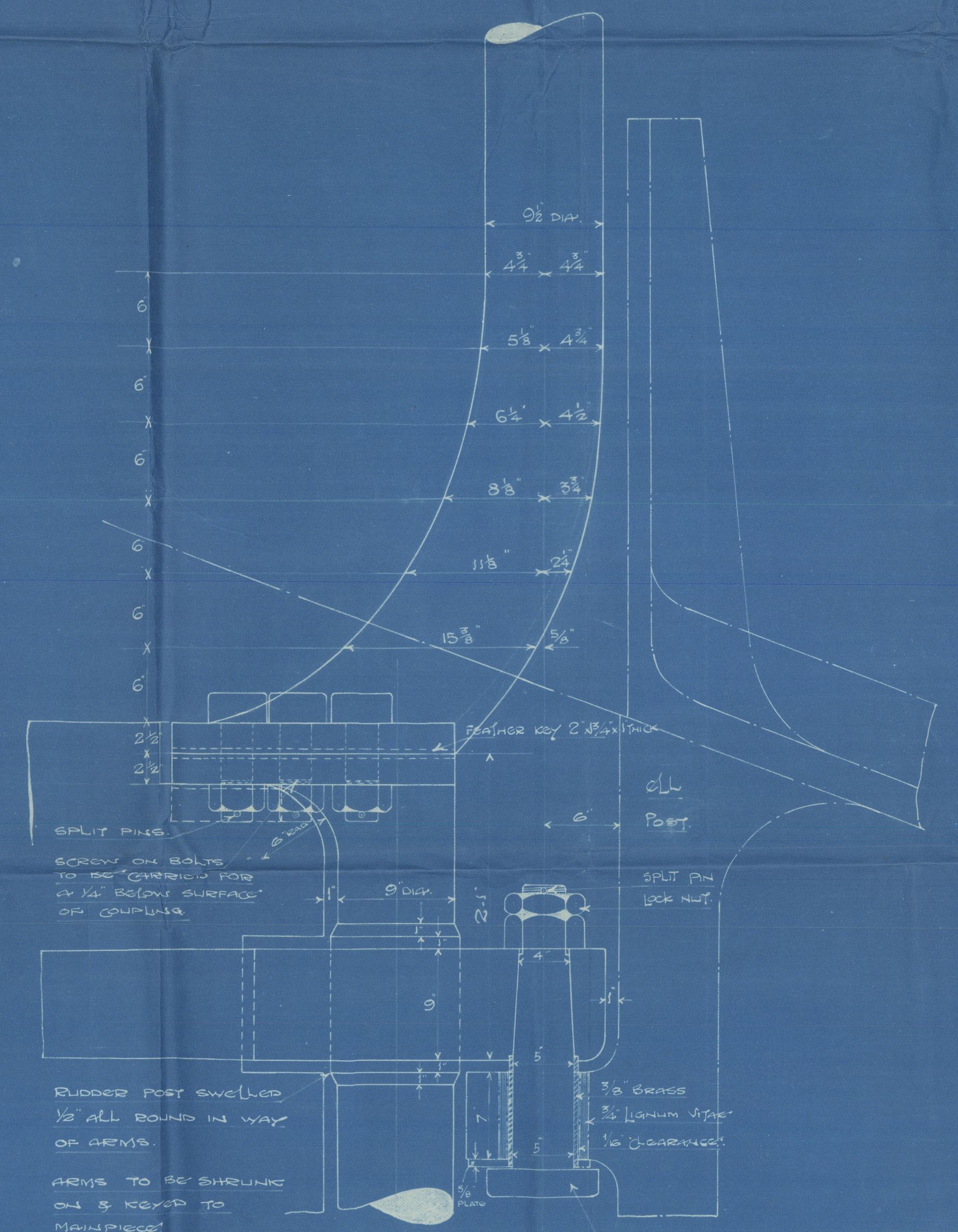


PLAN VIEW OF GUDGEONS & FINTLES

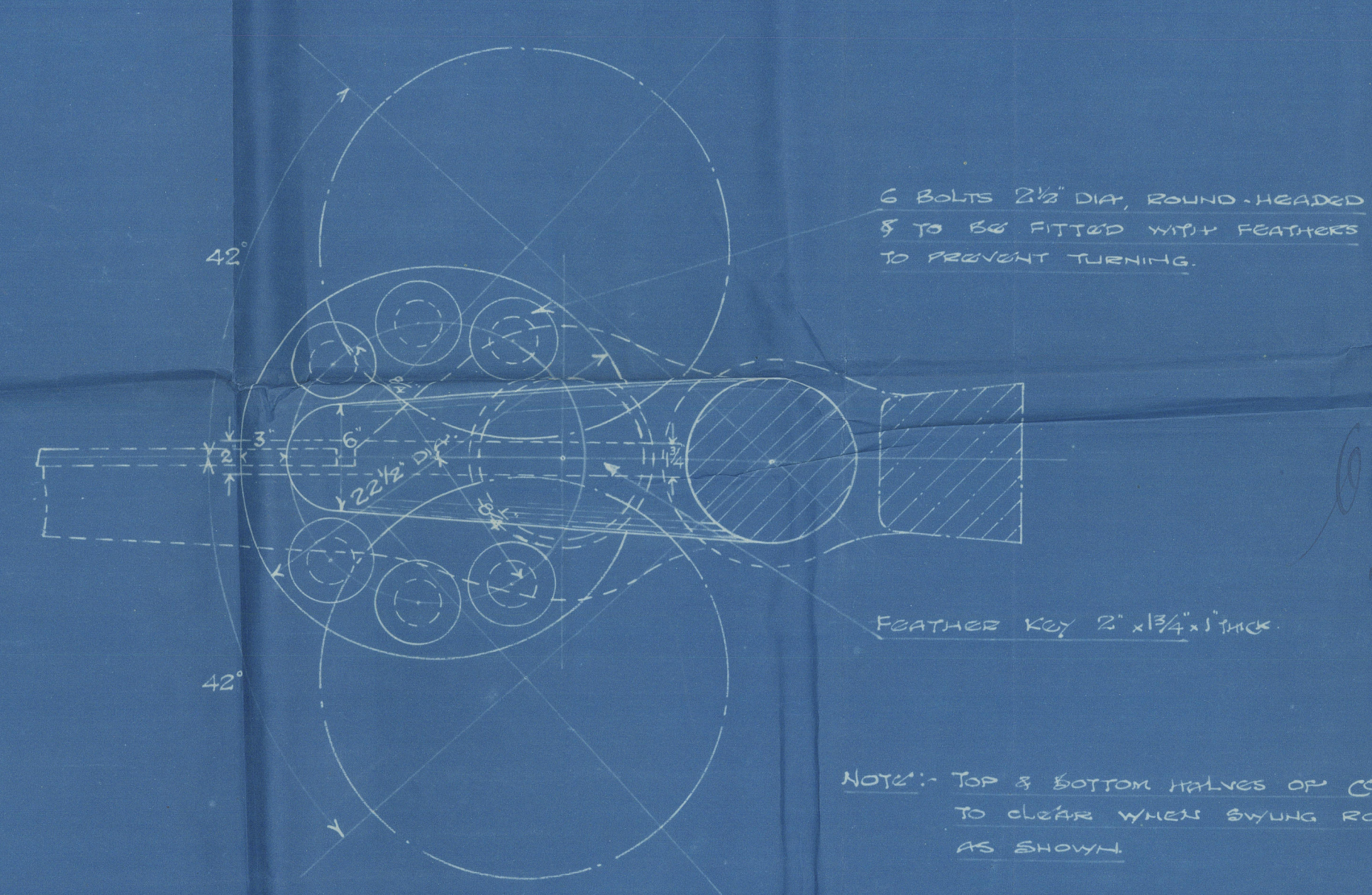


ELEVATION OF BOTTOM GUDGEON & FINTLE

SCALE 3" = 1 FOOT.

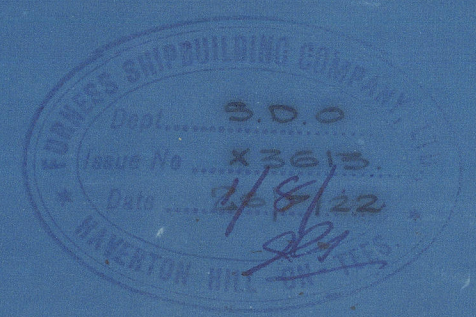
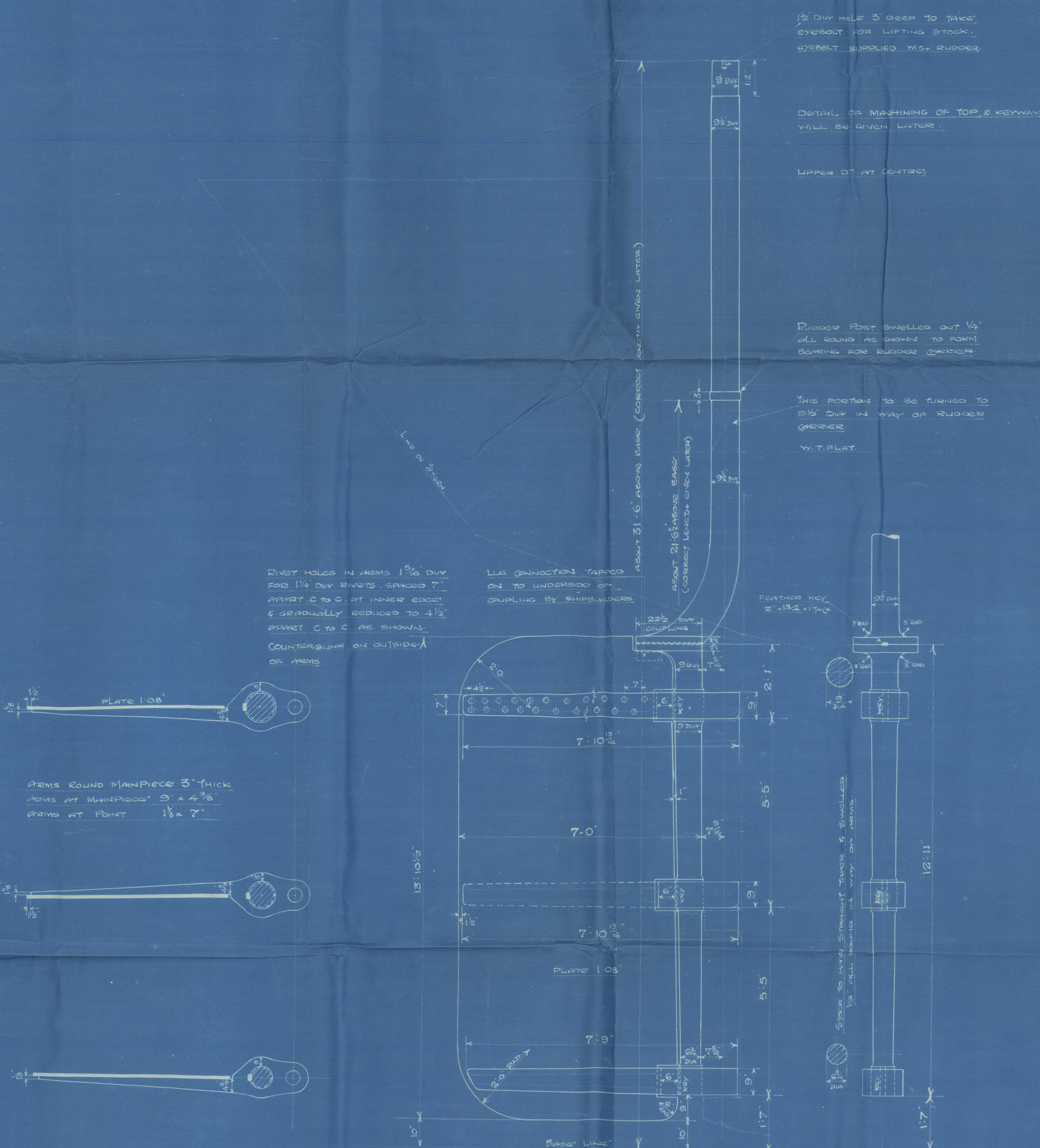


ELEVATION OF COUPLING, TOP GUDGEONS & FINTLE ETC



PLAN VIEW OF COUPLING ETC

SCALE 1 1/2" = 1 FOOT.



Messrs. J. & W. S. 1860

Nos 31 - 32

SINGLE PLATE RUDDER
(FORGED)

S.S. Sycamore (No. 31)
MDB. RPT. No. 11837

S.S. Dramore (No. 32)
MDB. RPT. No. 11967

009924 - 009933 - 0144



© 2021

Lloyd's Register
Foundation