

# Thomas B. Thrige

Odense, (Denmark)

Sk. / EA.

## TEST-SHEET.

No. 73464 1936, from A/B Gøtaverken, Gøteborg.

ANK. - 2 DEC. 1938

BESV.

Machine No. 228491.

Type CF 18 ~~XXXXX~~ 50 K.W. C 115 Volts 435 Amps. 1500 Rev.

ure No.: 8-8644 16 Brushes No.: K 19, Dimensions 20x30, Quality EG 3398.

as dynamo.

Date 10/2 - 1937.

	Terminal Volts	Line Amps.	Shunt		Rev.	Air- temp. °C	Remarks
			Volts	Amps.			
0	115	435	64,6	2,74	1500	16,0	
0	"	"	65,6	2,73	"	"	
5	"	"	66,0	2,68	"		
0	"	"	66,5	"	"	19,5	
0	"	"	"	"	"	19,0	
0	"	"	66,5	"	"	"	
0	"	"	"	"	"	"	

Temperature rise:

Armature: 29 °C, Shunt: 15 °C.

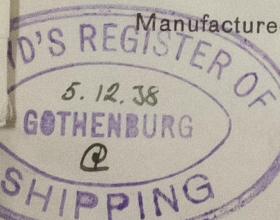
Series-winding: 14 °C, Interpoles: 17 °C, Commutator: 30 °C

5	115,9	545	70,3	2.80	1500	19,0	
5	115,5	"	70,5	2.86	"	"	
5	115,6	"	"	2,80	"	"	
	115	0	66,8	2,68	1580		
	"	435	"	"	1500		
	108	"	60	2,40	"		
	121	"	75	2.99	"		
	115	660			1500		for 1 min.

Insulation:

Test voltage: 2000 volts for 1 min.

Resistance: 40 megohms.



Manufactured and tested in accordance with British Lloyds rules.

Odense, 29/11 - 1938  
pr. Thomas B. Thrige

Chr. J. Roth