



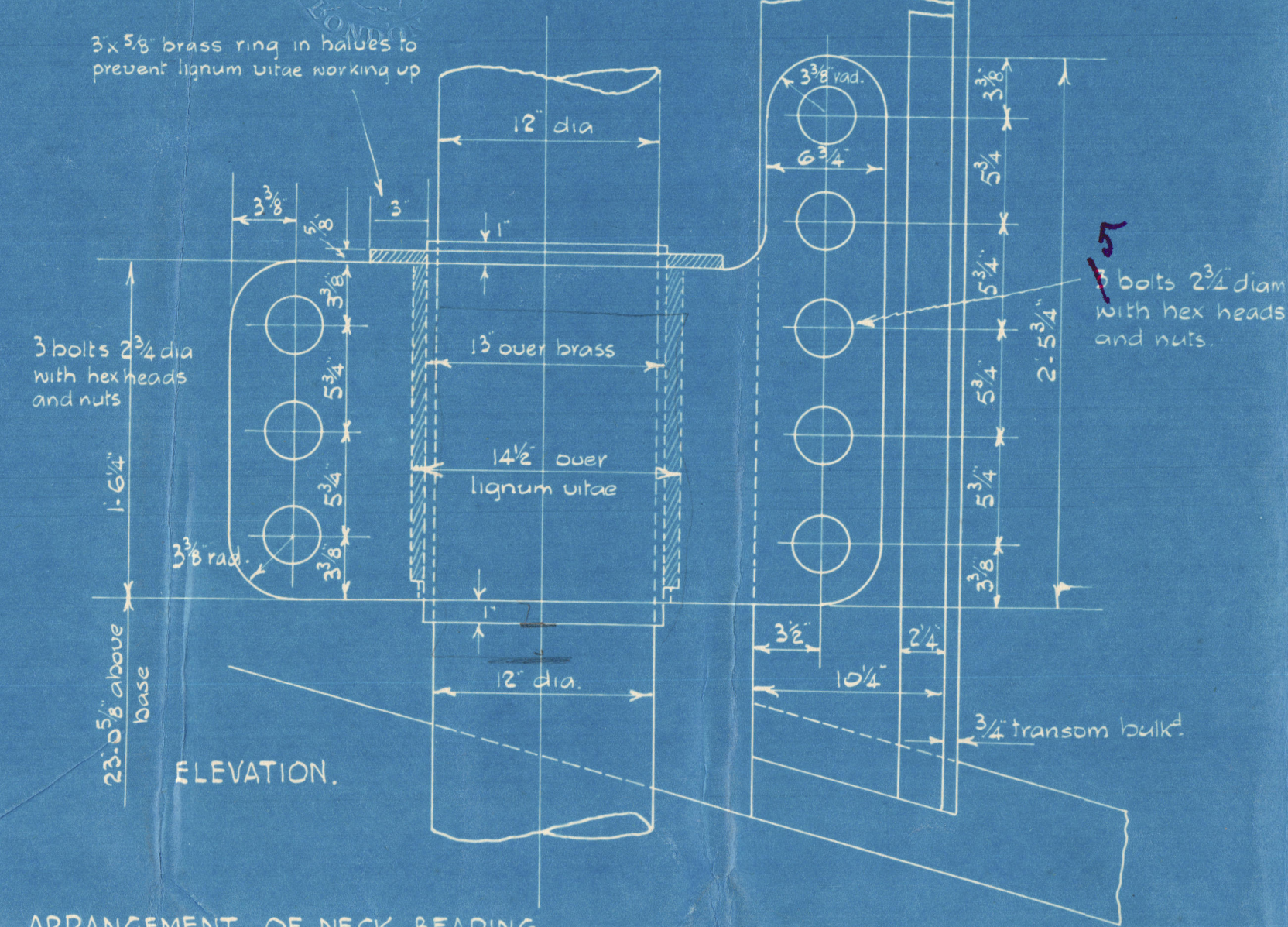
SOUTHWICK NOS 1-2-3-4. J.L.T. NOS 628-630. FABRICATED STERN FRAME.

Scales 1/2 & 1 1/2 = 1 foot.

PRINCIPAL DIMENSIONS.

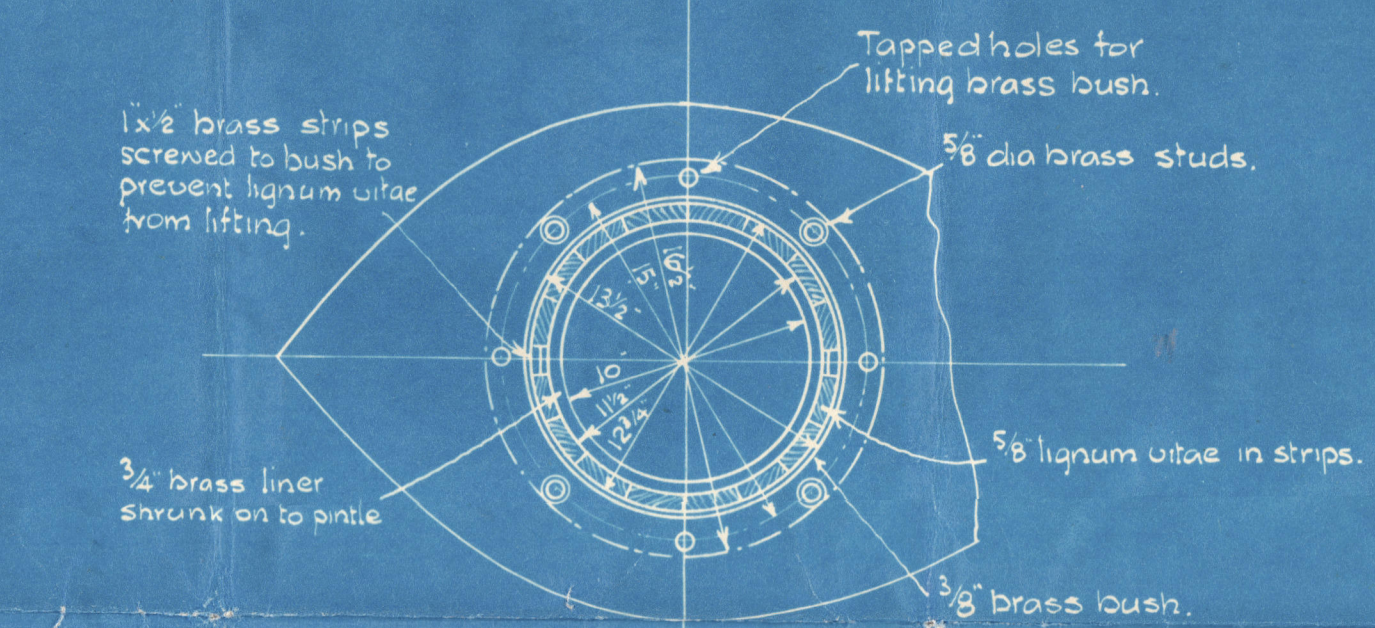
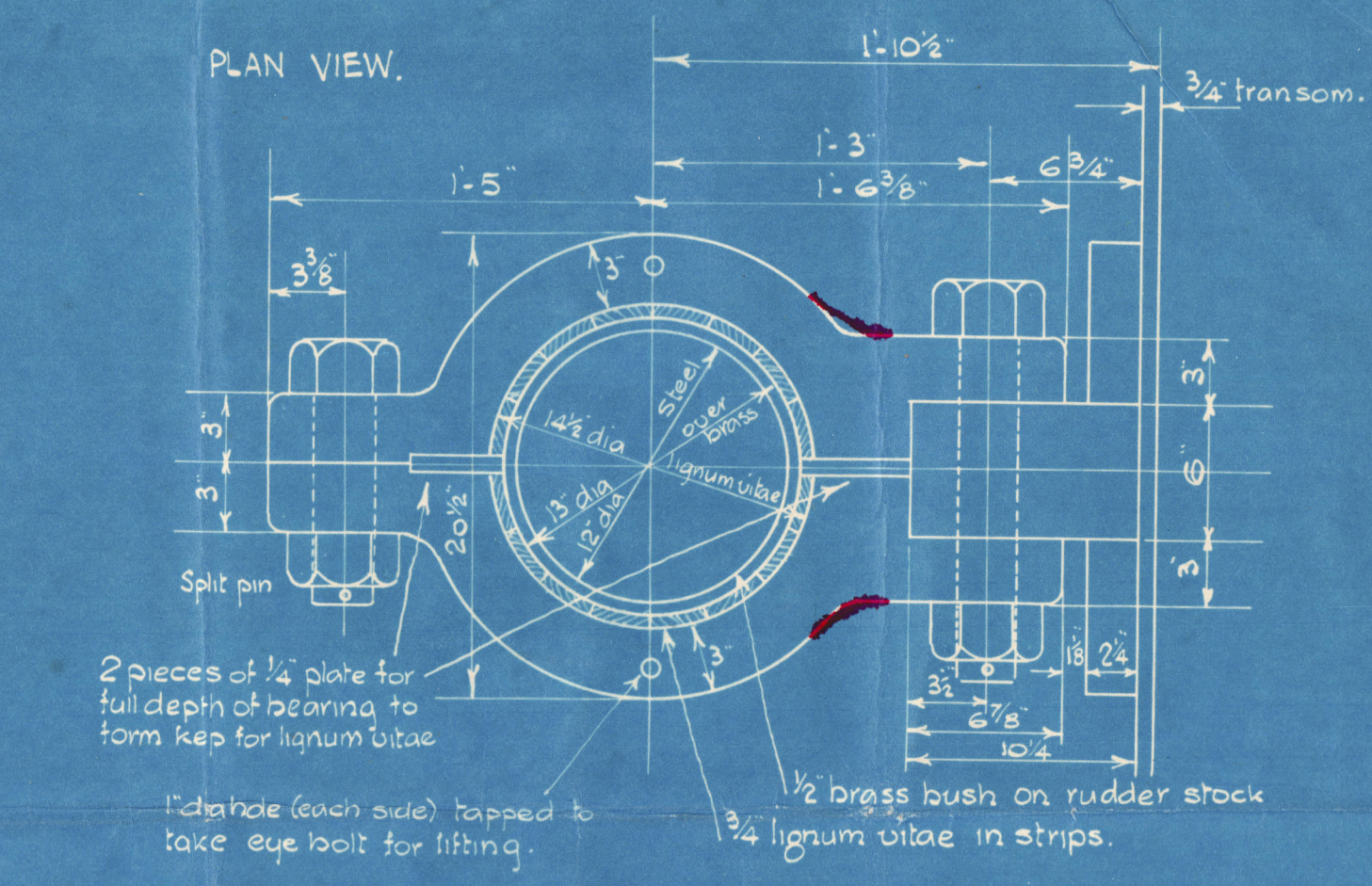
Length B.P.	423.102
Breadth Moulded.	56.0
Depth Moulded.	37.9
Complete Superstructure Vessel	
L x D x H	423.175 (27.75 + 8.0) : 151.53

Arrangement to be made to prevent rudder lifting
all frames relating to the rudder to be reached
when detailed plan of rudder is submitted

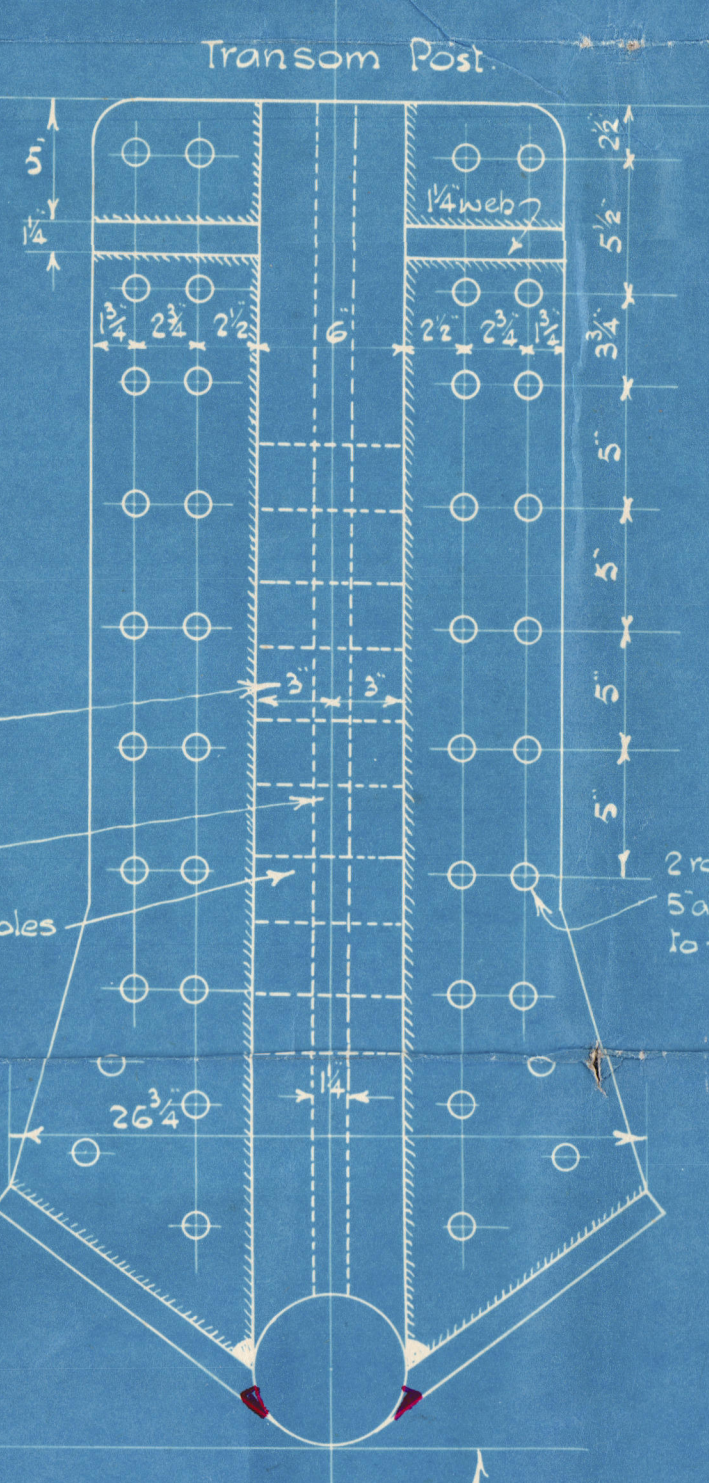
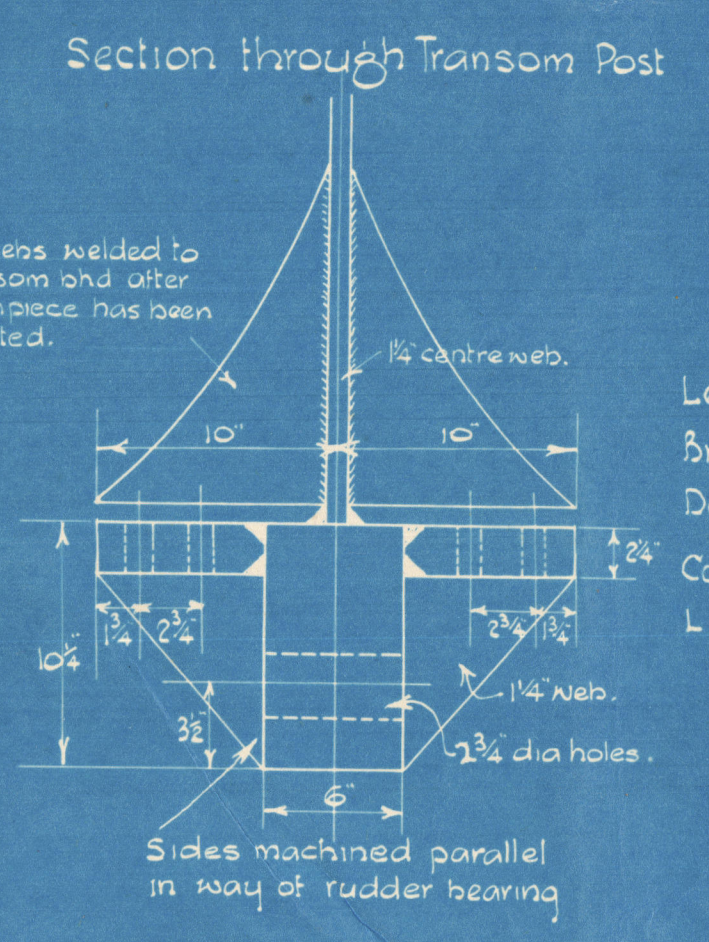
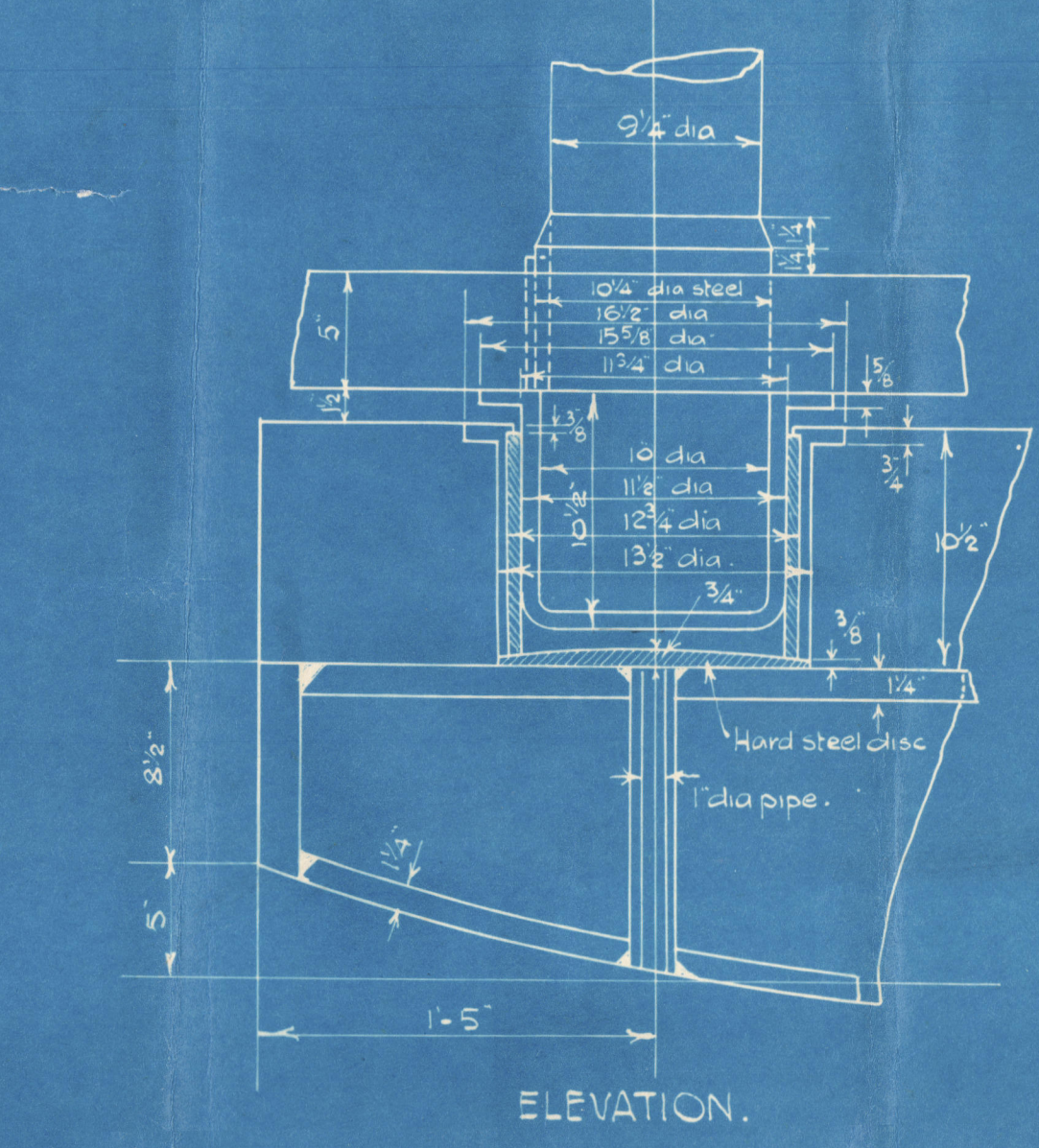


ARRANGEMENT OF NECK BEARING

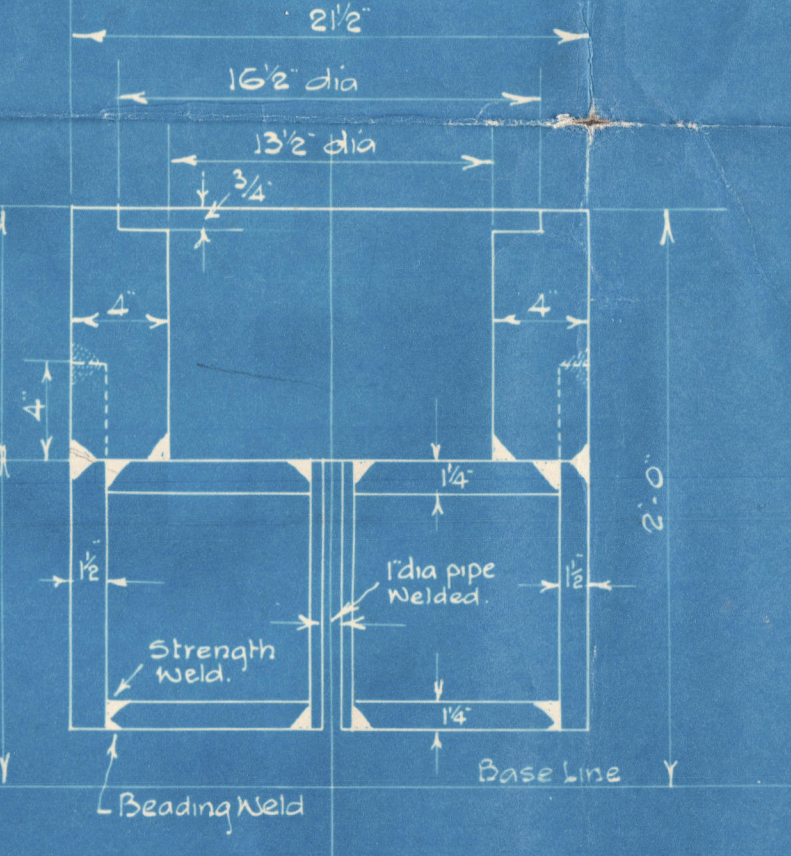
Material - Cast Steel
A special spinner to be provided for bearing bolt heads and nuts.



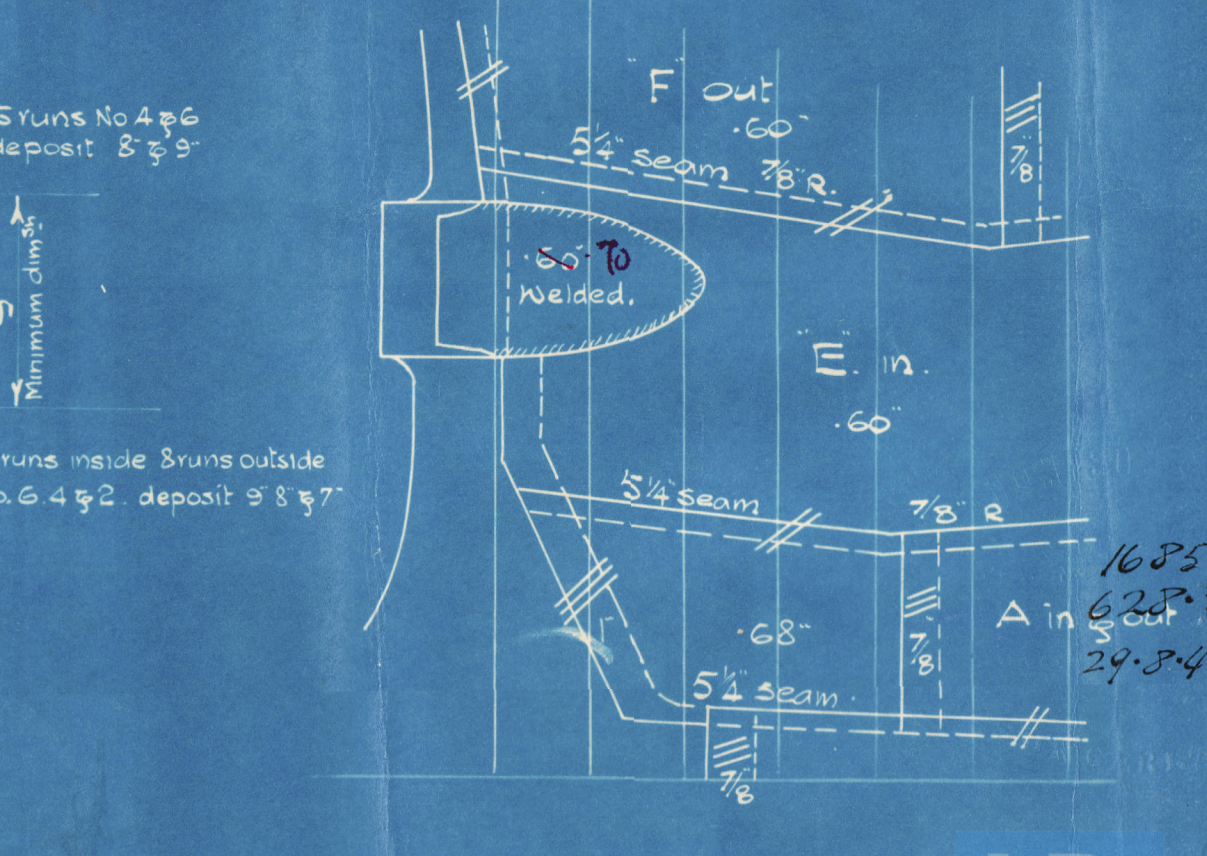
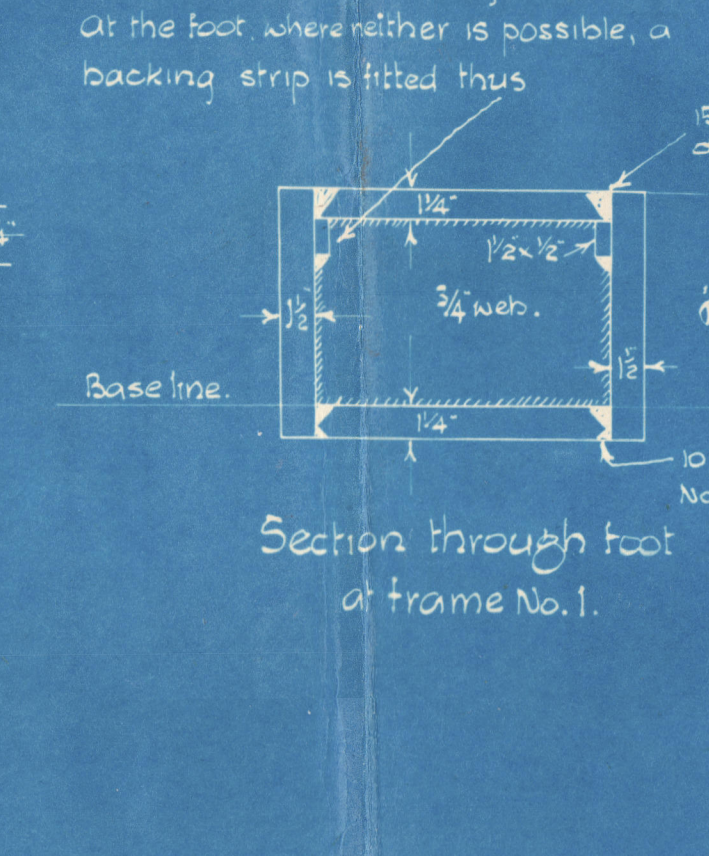
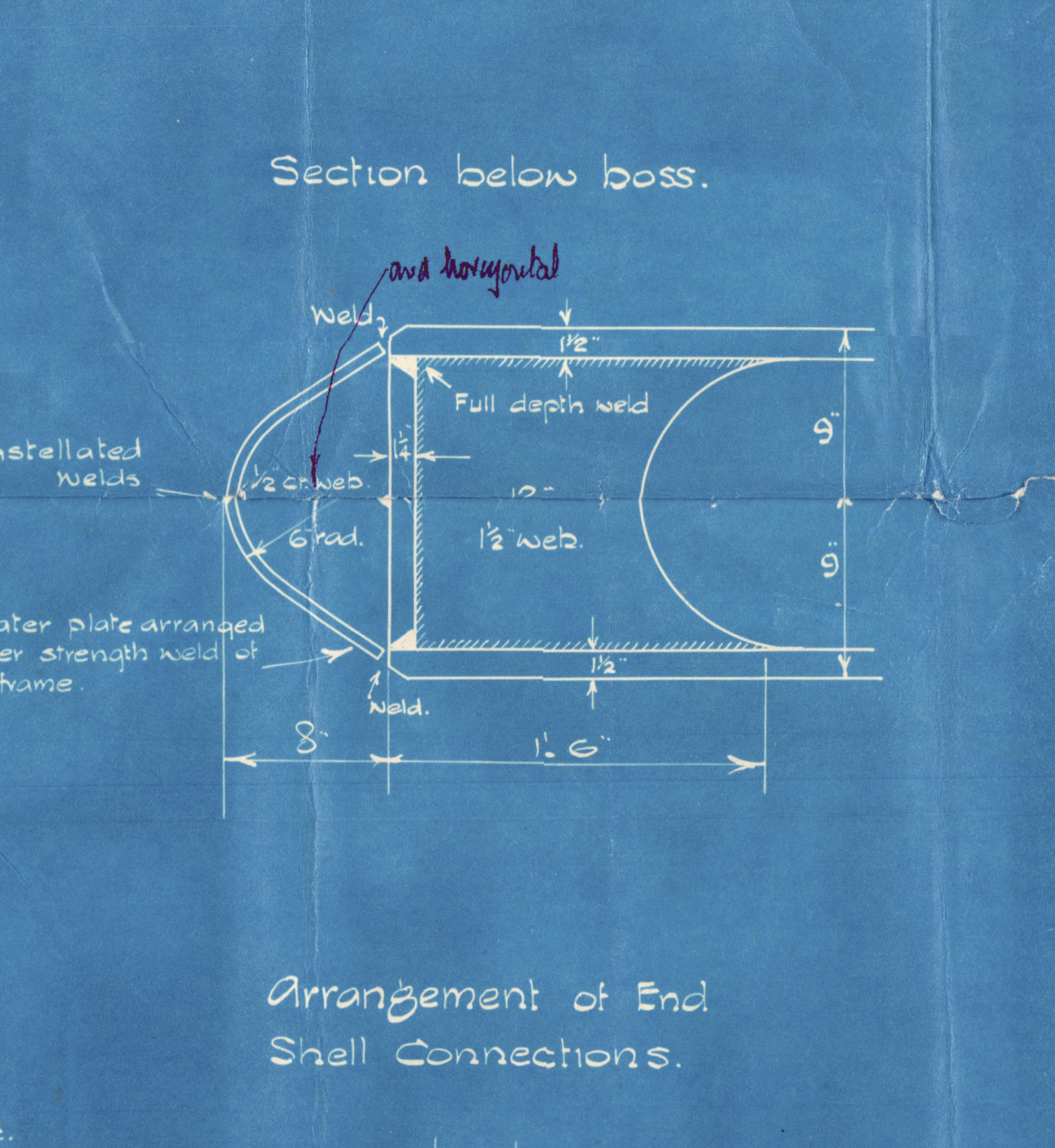
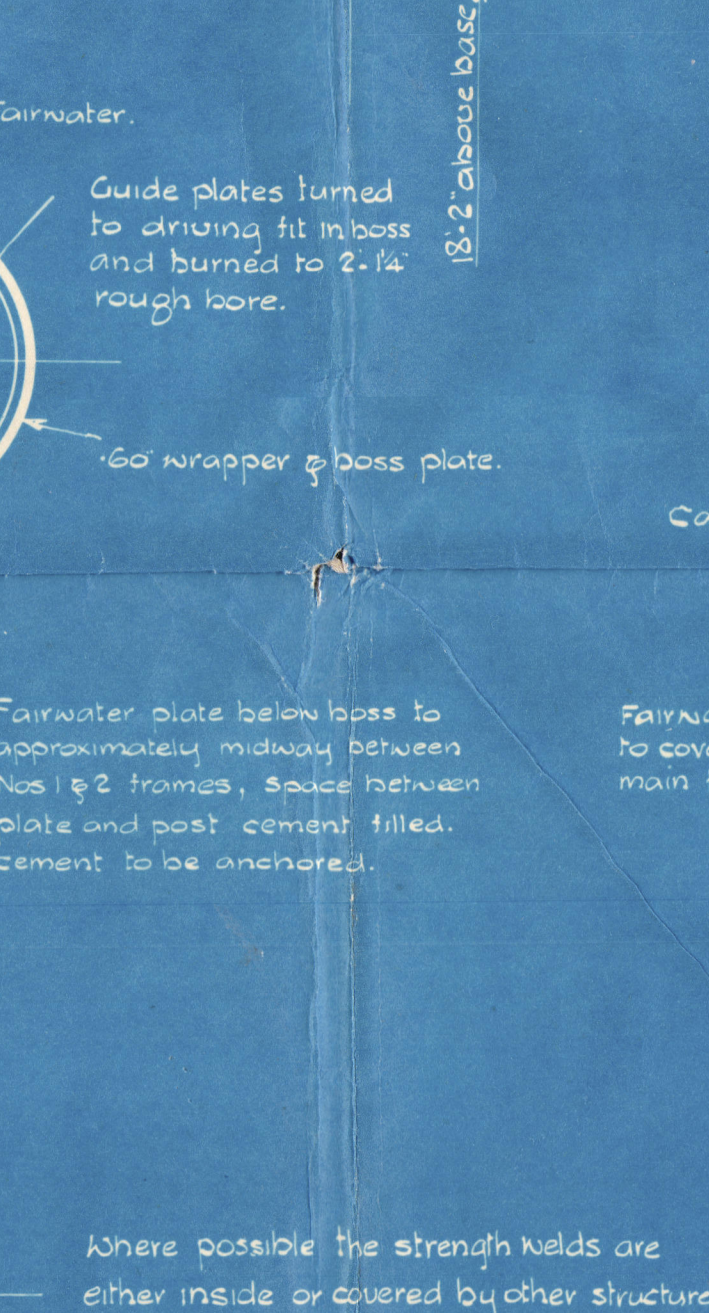
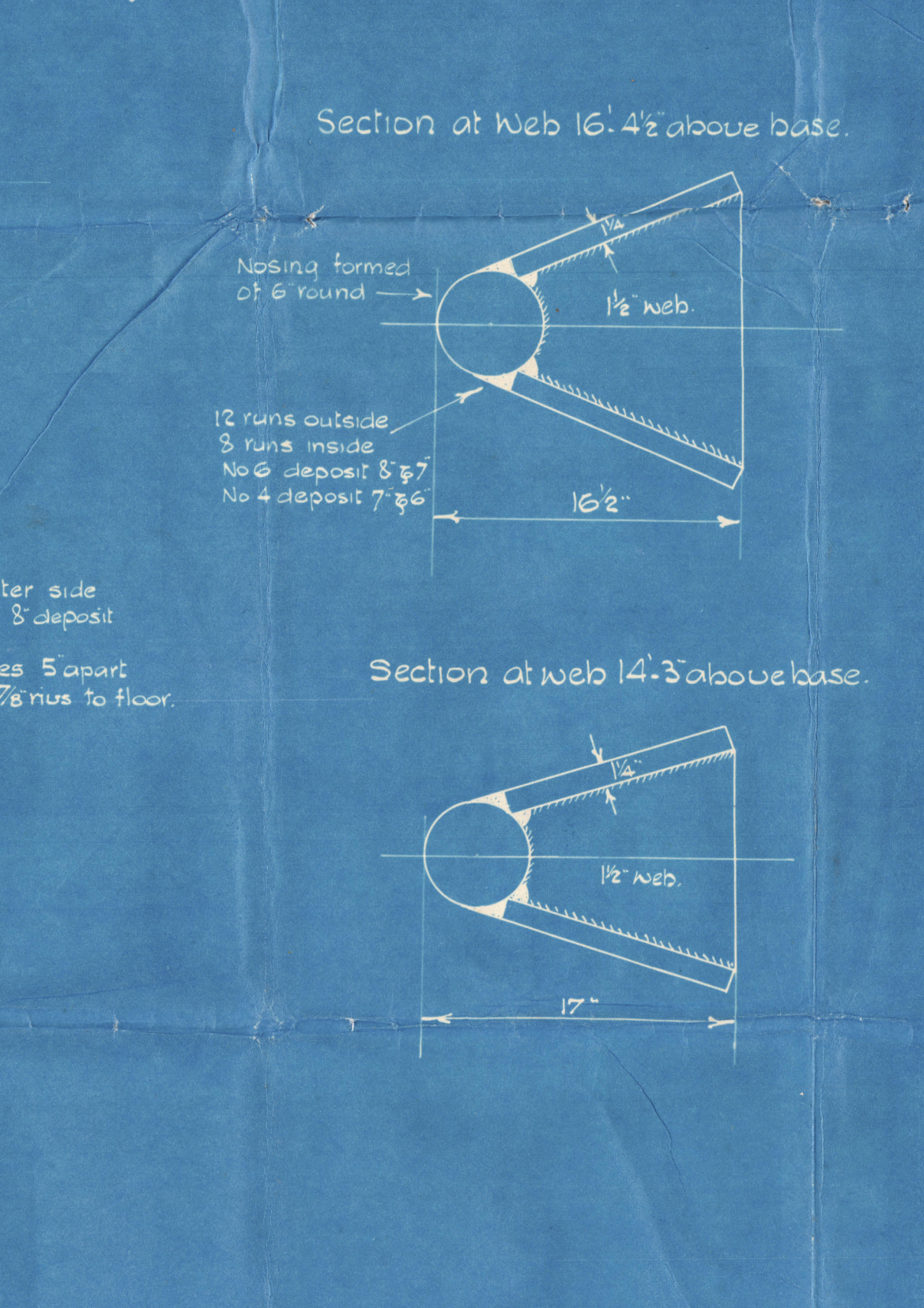
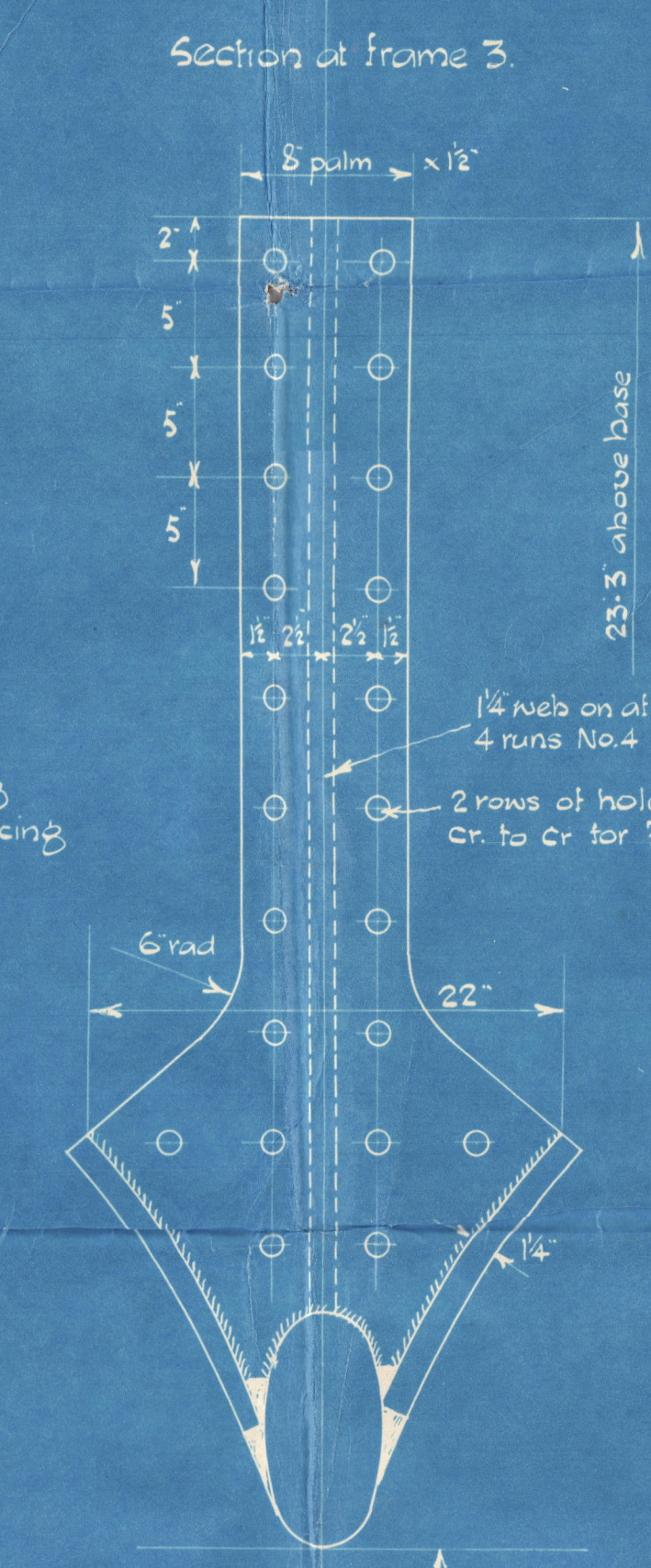
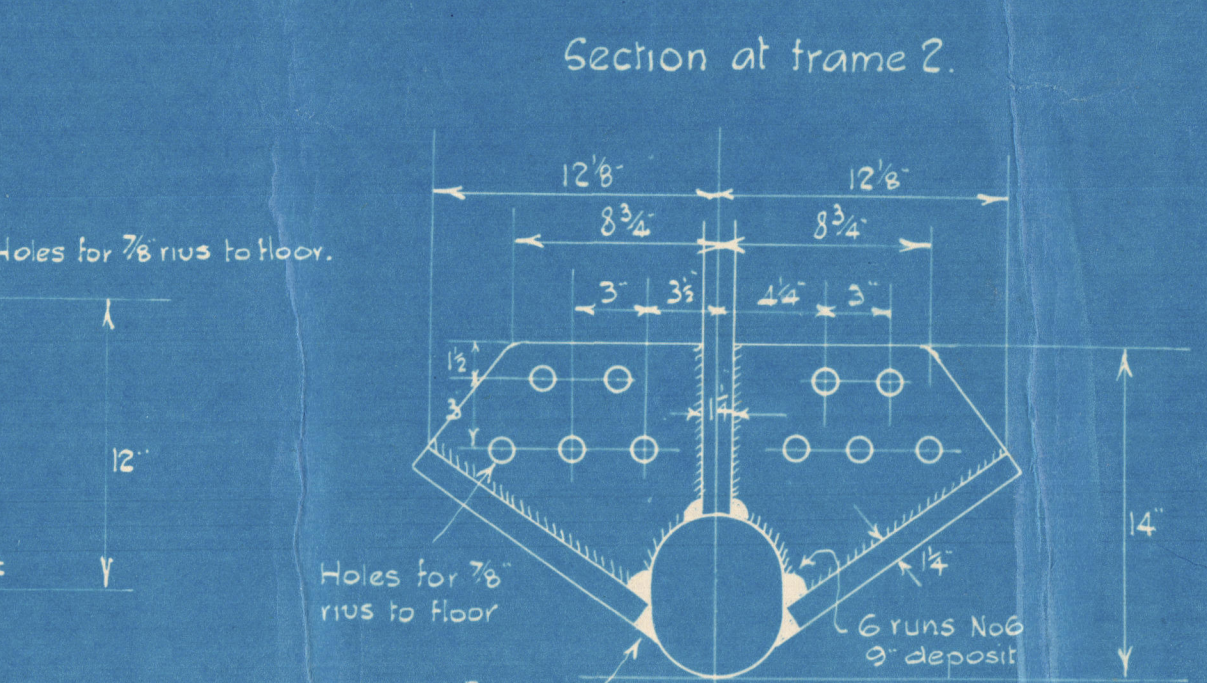
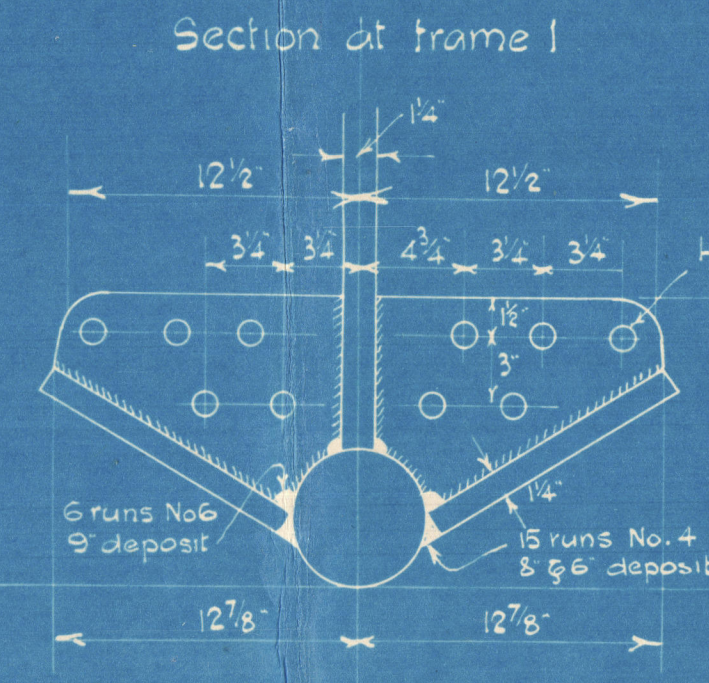
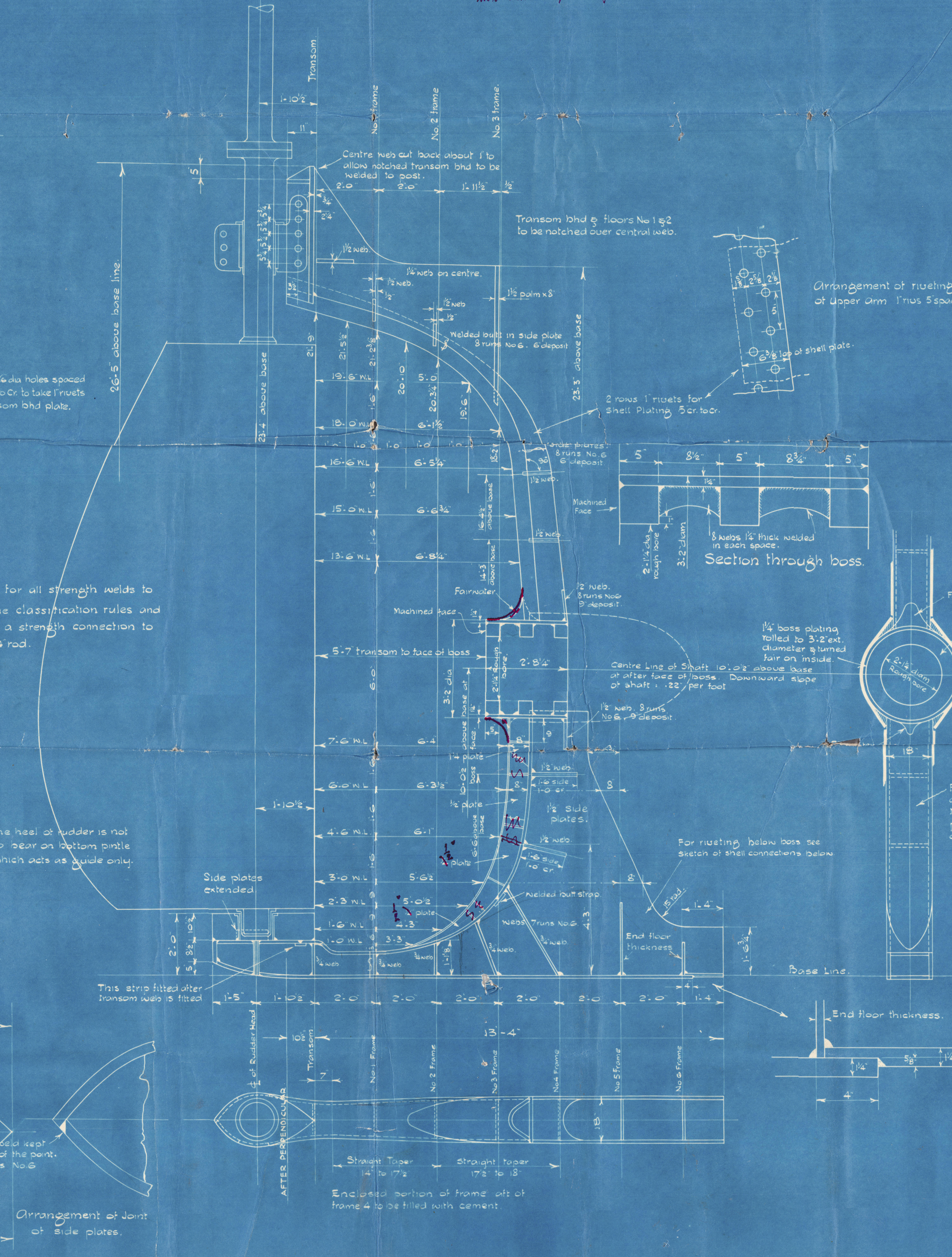
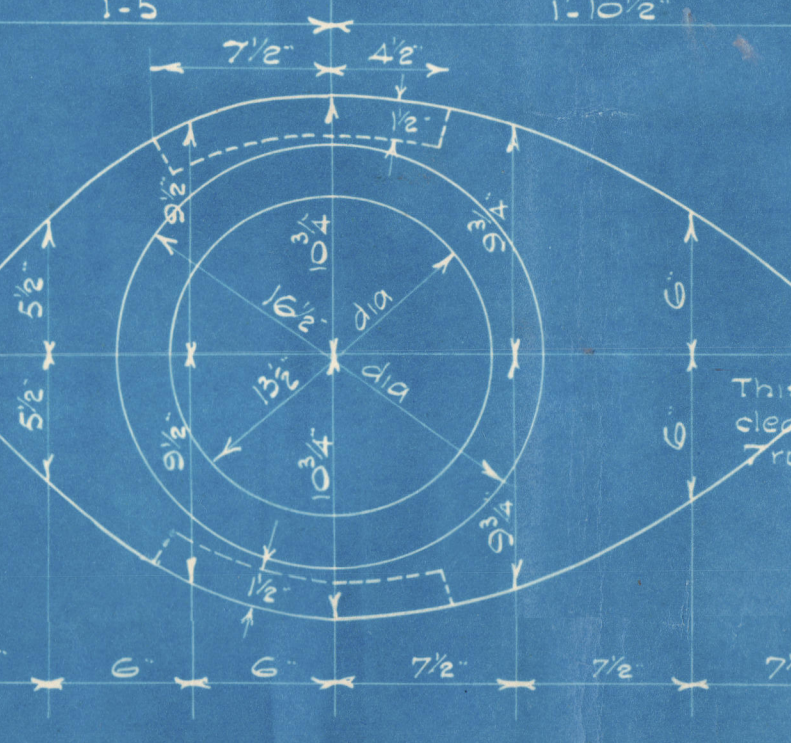
ARRANGEMENT OF LINERS AND BUSHES ON BOTTOM PINTLE



Transom Section of Bottom Gudgeon



Plan View of Bottom Gudgeon



16.853
A in 6.26.50
29.342

J. L. THOMPSON & SONS LTD

Yards Nos 625 630

Nos + 2. -- + SOUTHVIEW

FABRICATED STERNEROME

YARD NO 2, 5

EMPIRE TUDOR

Cast steel frame used on
nos 1 & 3 see separate plan

1/5 EMPIRE TUDOR

BUNDERLAND. No 33997

Bowmanck

(2)

009896-009903-0311



© 2021

Lloyd's Register
Foundation