

187 JAN 1944

Index No. 37492
(For London Office only).

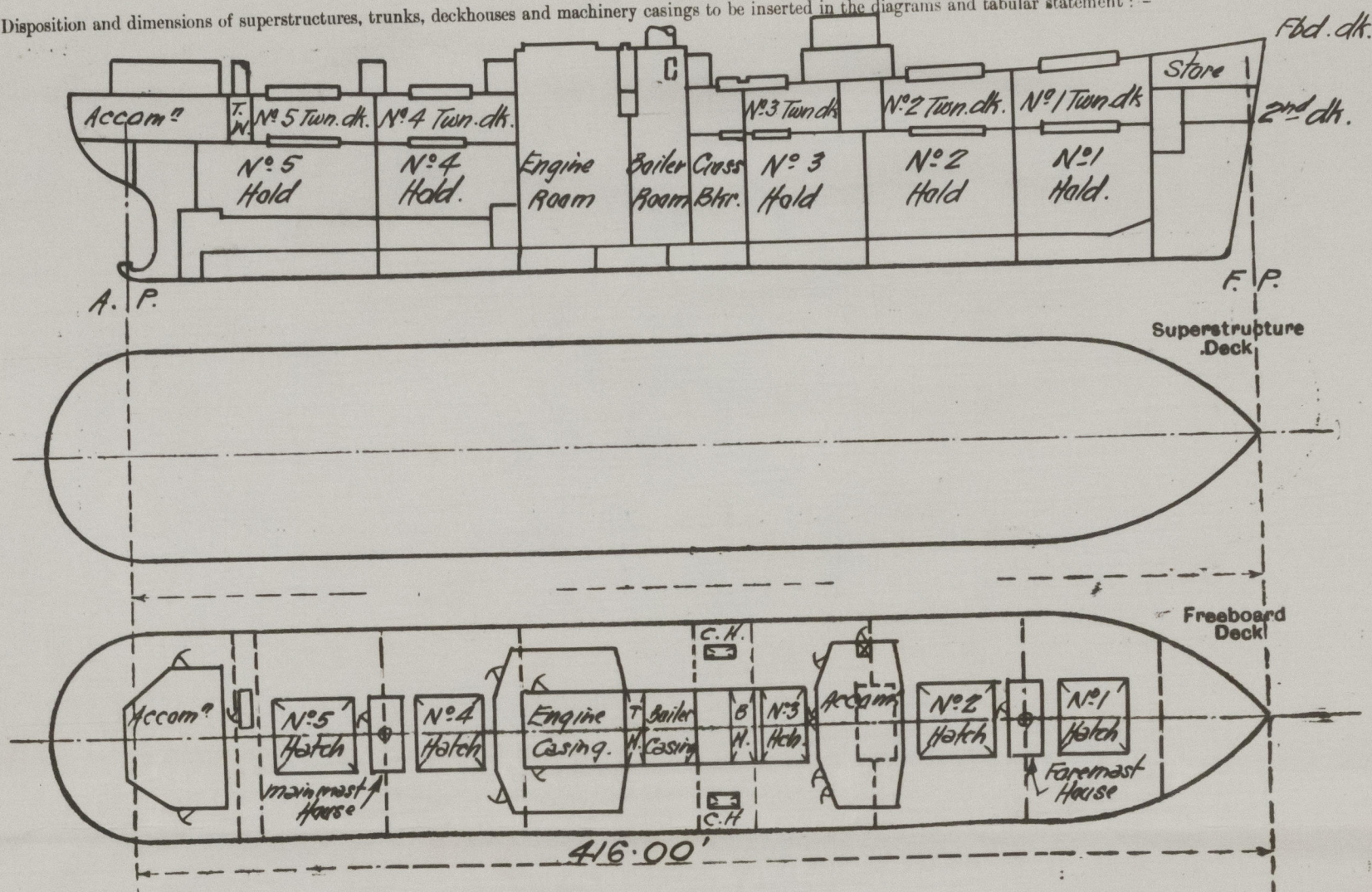
Lloyd's Register of Shipping.

SURVEYS FOR FREEBOARD.

(CONDITIONS OF ASSIGNMENT.)

Ship's Name **S.S. "FORT CATARAQUI"**Port of Survey **QUEBEC, P. Q.**Official Number **168356.**Surveyor's Signature **W. Hislop.**Nationality and Port of Registry **British.**Date of Survey **13th, October, 1942.**

Disposition and dimensions of superstructures, trunks, deckhouses and machinery casings to be inserted in the diagrams and tabular statement :-



Particulars of Superstructures, Trunks, Casings, Deckhouses.

	Coaming	Plating	Stiffeners	Spacing	End Attachments of Stiffeners	Size of Openings	Height of Sills	Height of Casings
Poop Bulkhead	-							
Raised Quarter Deck Bulkhead ...	-							
Bridge, After Bulkhead	-							
Bridge, Forward Bulkhead	-							
Forecastle Bulkhead	-							
Trunk, Aft	-							
Trunk, Forward	-							
Exposed Machinery Casings on Freeboard or Raised Quarter Decks ...	22½ x .34"	.30"	3" x 3" x .31"	30"-39"	Head-Bkt. Bottom Con.	2-5'0" x 2'0"	24"	10'-6"
Exposed Machinery Casings on Superstructure Decks - Mast House	Vert. Plg.	.40"	5" x 3" x .38" & Div. Bhds.	33"	Bkts. top & bottom	Ford-5'x2' Aft-5'x2'	18"	7'-6"
Machinery Casings within Superstructures not fitted with Glass Closing Appliances - Poop House	"	.30"	3" x 3" x .31"	Max. 40"	" " " "	See Comp' ways	24"	7'-6"
Midship Houses	"	"	Sides .30" 3" x 3" x .31" Front .35" 5" x 3" x .44"	Max. 37½"	All bktd. at top. Altn heels bktd.	See Comp' ways	18"	7'-6"
Deckhouses on Flush Deck Ships ...	"	"	"	"	"	"	"	"

Particulars of Closing Appliances (state if capable of being manipulated from both sides).

Poop Bulkhead	-
Raised Quarter Deck Bulkhead ...	-
Bridge, After Bulkhead	-2
Bridge, Forward Bulkhead	-
Forecastle Bulkhead	-
Exposed Machinery Casings on Freeboard or Raised Quarter Decks ...	Hinged steel doors, manipulated from both sides.
Exposed Machinery Casings on Superstructure Decks - Mast House	" " " " " " " "
Machinery Casings within Superstructures not fitted with Glass Closing Appliances - Poop House	Hinged hardwood doors, manipulated from both sides.
Midship Houses	" " " " " " " "
Deckhouses on Flush Deck Ships ...	" " " " " " " "

Particulars of Gangway Cargo and Coaling Ports :—

None.

Particulars of Scuppers and Sanitary Discharge Pipes :—

All scuppers from spaces below freeboard deck discharge to bilges.
Sanitary discharges from spaces above freeboard deck are fitted with brass storm valves at ships side.
" " " "tonnage well" space below freeboard deck aft are fitted with brass N.R. valves at ship's side with extended spindles to freeboard deck.
2" scuppers p&s. from stores, fitted with brass N.R. valves below second deck with extended spindles to freeboard deck.
Strongly constructed ash shoot, midships, starb'd side, casing watertight from ship's side to hopper, 39" above freeboard deck. Hopper fitted with hinged steel weathertight cover. Ship's side opening above second deck.

Particulars of Side Scuttles :—

To accommodation and steering gear spaces below freeboard deck aft, 10" diameter side scuttles, strongly constructed with brass frames and hinged bronze deadlights.
To Deckhouses on Freeboard deck, 15", 12" and 10" diameter side scuttles, strongly constructed with brass frames and hinged malleable cast iron deadlights.

Vertical distance of Sill of lowest Side Scuttle above top of keel Side scuttles fitted below freeboard deck, aft only.
Vertical distance of will of lowest side scuttle, 61'-1½" forward of A.P., 36'-3" above top of keel.

Particulars of Guard Rails :—

Strongly constructed steel bulwarks, efficiently stayed, fitted on freeboard deck for about 36' at fore end and also abreast midship houses.
Elsewhere on freeboard deck, steel stanchions, 3" x 1" flat, 3'-6" in height, spaced about 5'-0" apart, with 1½" diam. pipe top rail and two 7/8" diam. solid rod rails.

Particulars of Gangways, Lifelines, etc. :—

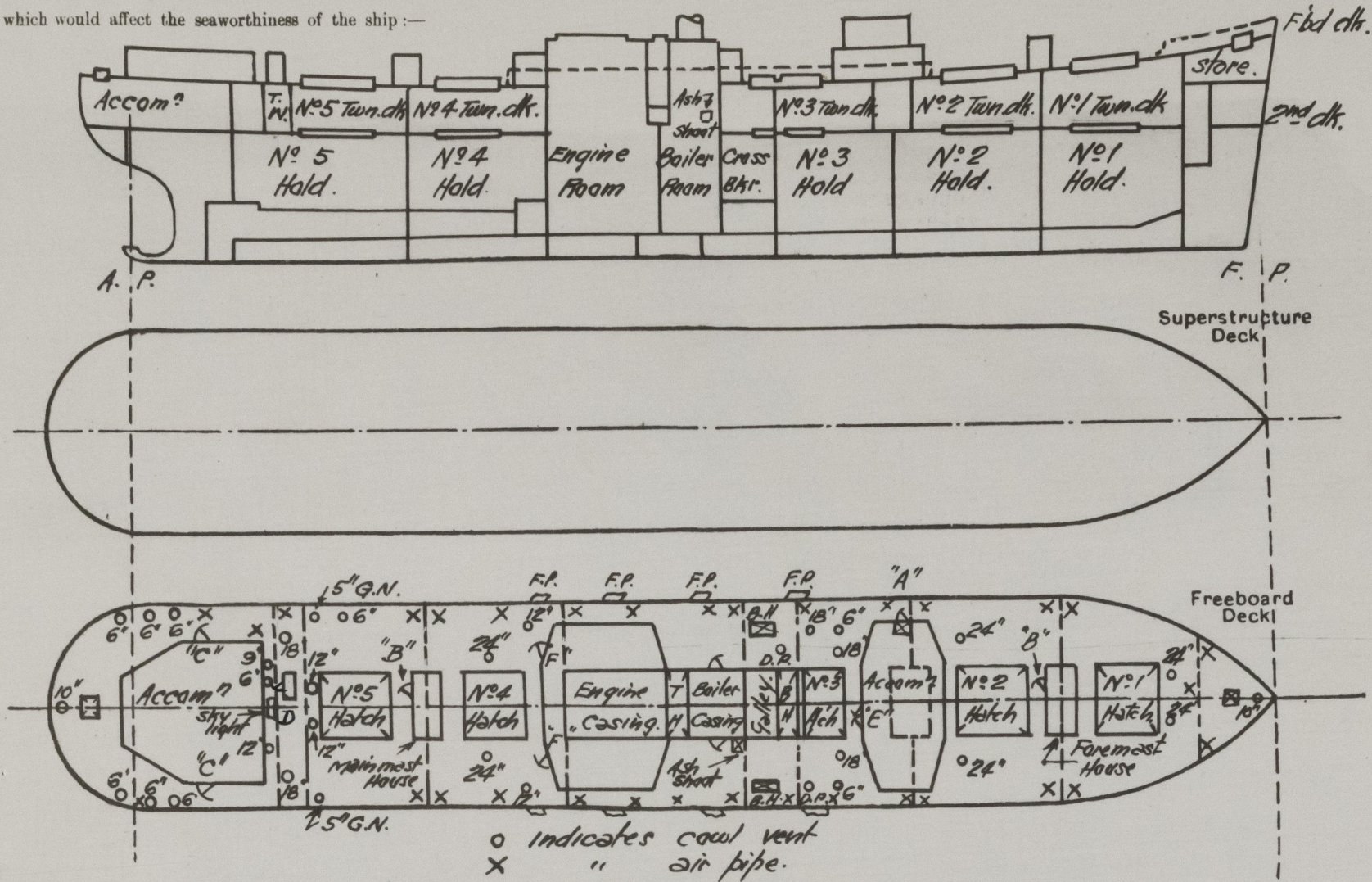
Provision made for rigging life lines on each side of vessel, between midship deckhouses and from engineers deckhouse to after house.

Particulars of Freeing Arrangements.						
	Length of Bulwark	Height of Bulwark	Size of Freeing Ports	Number each side	Area each side	Rule area each side
After-Well Amidships...	127.75'	3'-6"	3'-0" x 9"	Four	9 sq.ft.	-
Forward Well						
State position of each freeing port (F. and A. position and height above deck edge) { After-Well:- Amidships:- 4" above deck. Forward-Well:-						
State whether the freeing ports are fitted with shutters, bars, or rails, and give particulars of such:—No shutters, bars or rails fitted.						
Additional area where sheer is less than standard.						



PARTICULARS OF PROTECTION TO OPENINGS, ETC.

The following diagrams should be used to indicate the positions of cargo and coaling hatchways, gangway, cargo and coaling ports, ventilators, companionways, etc., which would affect the seaworthiness of the ship:—



Particulars of fiddley, funnel and ventilator coamings, engine room skylight and other openings in machinery casing tops and their means of closing :—

Engine Room skylight of steel, strongly constructed.
Funnel and ventilator coamings, strongly constructed.
Fiddley openings fitted with hinged steel covers with locking arrangements

Particulars of Flush Bunker Scuttles :—

None.

Particulars of Companionways:—		All companionway doors operated from both sides.	
"A" - 5'-0"x2'-0" opening,	sill 18" with hinged steel watertight door in dkhse. side, port, to hold.		
"B" - 5'-0"x2'-0" "	" 18" " " " " masthses, encl. hold escape		
"C" - 4'-10 ¹ / ₂ "x2'-0" "	" 24" " " " solid h'wood door to poop hse., encl. comp'way to Accommodation.		
"D" - 5'-11 ¹ / ₂ "x2'-3" "	" 21" " " " " strong steel comp'way to tonnage well.		
"E" - 5'-0"x3'-4" "	" 18" " " " double solid h'wood doors to saloon hse., encl. access to cabin store		
"F" - 5'-0"x2'-0" "	" 18" " " " solid h'wood door to dkhse., encl. engine.		

One skylight to crew space aft 3'-6"x2'-0", coaming .30"x16" above wood deck with hinged steel covers.

One skylight to crew space aft 3'-6"x2'-0", coaming .30"x16" above wood deck with hinged steel covers.

Particulars of Ventilators in exposed positions on freeboard and superstructure decks :—

Particulars of Ventilators in exposed positions on deck.				Particulars of Ventilators in exposed positions on deck.			
6-24"	diam.	cowl vents,	coamings	36"x.42"	"	Holds	and Tween decks.
3-18"	"	"	"	36"x.40"	"	"	"
2-18"	"	"	"	10'-6"x.40"	"	"	"
2-12"	"	"	"	36"x.34"	"	"	"
2-12"	"	"	"	36"x.34"	"	No. 5 Tween decks.	
1-10"	"	"	"	36"x.32"	"	Stores.	
1-10"	"	"	"	36"x.32"	"	Steering gear compartment.	
1-9"	"	"	"	36"x.32"	"	Crews accommodation	
8-6"	"	"	"	36"x.30"	"	"	"
2-6"	"	"	"	36"x.30"	"	Cabin store, etc.	
1-12"	"	"	"	36"x.34"	"	Tunnel escape,	
2-5"	"	goosenecks,	"	18"x.62"	"	Crews wash & W.C.	

All ventilators fitted with wood plugs and canvas covers.

All ventilators fitted with wood plugs and canvas covers.

Particulars of Air Pipes in exposed positions on freeboard, ~~raised quarter, or superstructure~~ decks:—

Particulars of Air Pipes in exposed positions on freeboard, raised quarter, or superstructure decks.

2-3" diam. air pipes to fore peak.	2-3" and 2-2 $\frac{1}{2}$ " diam. air pipes to No. 7 D.B.
2-2" and 1-2 $\frac{1}{2}$ " diam. air pipes to No. 1 D.B.	2-2 $\frac{1}{2}$ " " 2-2 $\frac{1}{2}$ " " " " " 8 D.B.
4-3" diam. air pipes to No. 2 D.B.	2-3" diam. air pipes to aft peak
2-3" and 2-2 $\frac{1}{2}$ " diam. air pipes to No. 3 D.B.	2-6" " " " " " deep tanks.
2-3" " 2-2 $\frac{1}{2}$ " " " " " 4 D.B.	3-3" " " " " " built-in F.W. tank
2-3" diam. air pipes to No. 5 D.B.	with openings 18" above deck.
2-3" " " " " 6 D.B.	

All air pipe openings 30" above deck and fitted with wood plugs and canvas covers.

A new form should be prepared if any alterations that affect the freeboard have been made. If no such alterations have been made, the Surveyor should endorse the form on this side with his signature and the date.

Trade of ship General.

Names of sister ships Standard North Sands Type.

Builder's name and yard number Davie Shipbuilding & Repairing Co. Ltd., Glasgow, P.Q. Hull No. 538

Owners Ministry of War Transport

Fee ☒ \$ 100.00

P



© 2021

Lloyd's Register
Foundation

0246 4/4