

Nº 647.

MIDSHIP SECTION.

COMPLETE SUPERSTRUCTURE VESSEL

LENGTH B.P. (L.W.L) 420'-0" BREADTH M^LD 56'-8½" DEPTH M^LD 28'-1"

CLASS LLOYDS 100A.I. WITH FREEBOARD

SCALE ½" = 1 FOOT.

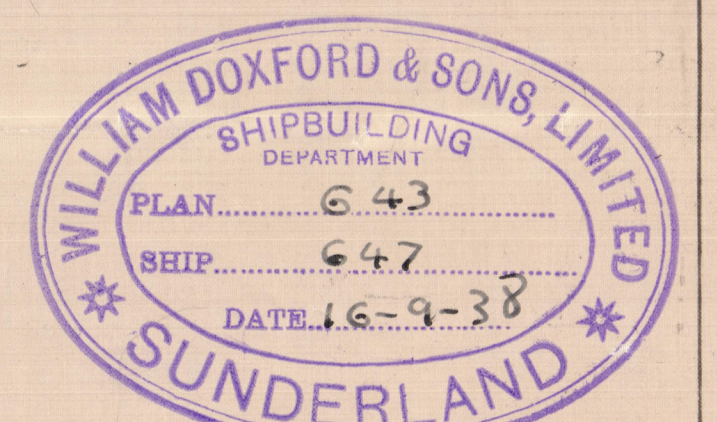
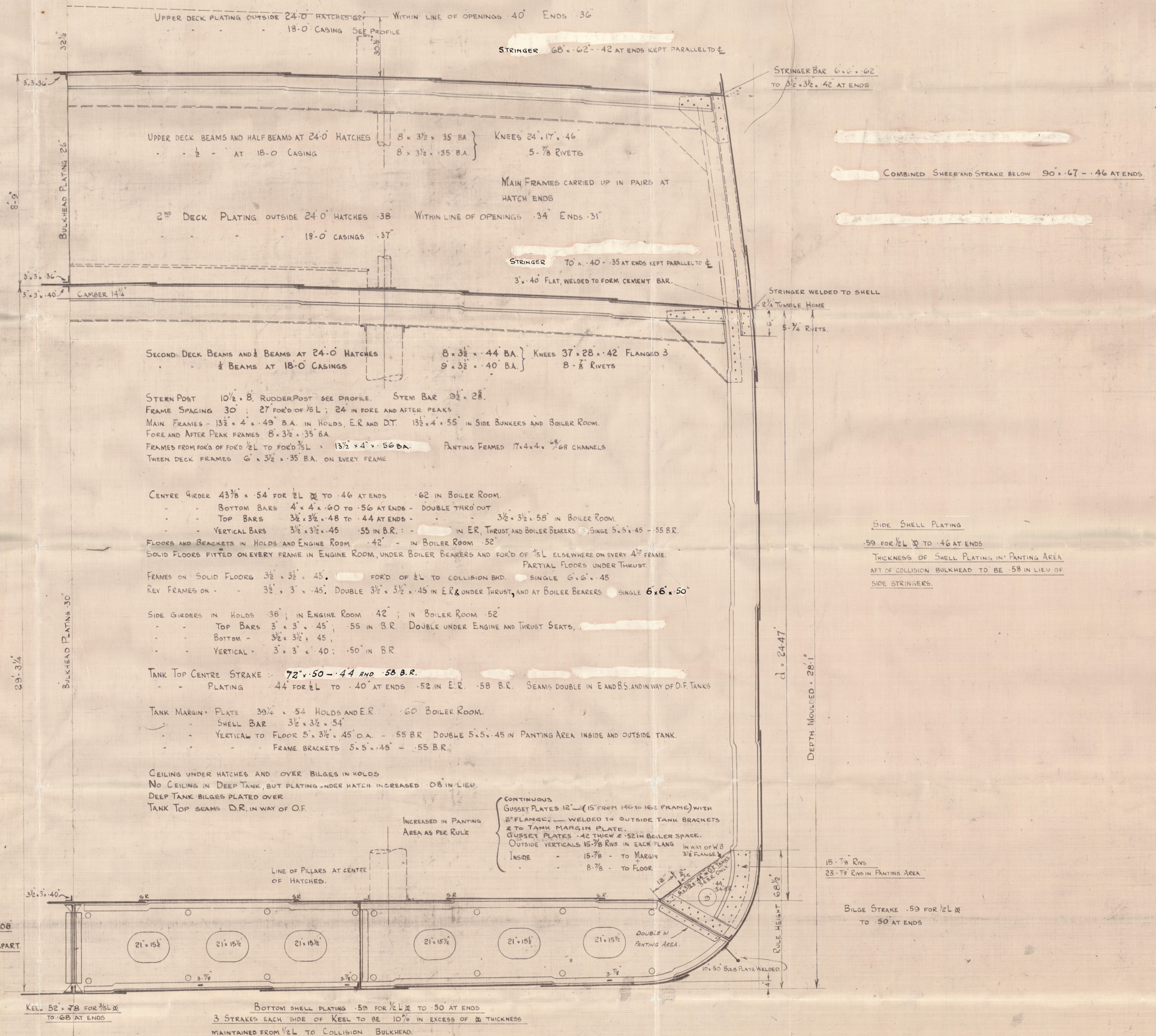
CORRESPONDING TO A DRAFT NOT EXCEEDING THAT CONTEMPLATED BY THE RULES FOR A COMPLETE SUPERSTRUCTURE VESSEL HAVING A TONNAGE OPENING.

NUMERALS		
DEPTH FOR SCANTLING	D	36-08
L x D		421.54 x 36-08 = 15210
L (B + D)		421.54 (56.71 + 36-08) = 39115
1/2 D (UPPER)		18-04
DEPTH d		24-47

EQUIPMENT NUMERAL		
L (B + D)		421.54 (56.71 + 36-08) = 39435
FORECASTLE	3/4 x 33-0 x 7-5	186
CASING - SIDE HOUSES	1/2 x 56-5 x 7-5	219
SALOON HOUSE	1/2 x 23.75 x 7-5	89
		39929

EQUIPMENT - LETTER & T		
3	BOWERS ANCHORS STOCKLESS	Collective weight 194½ cwt.
1	STEAM ANCHOR EX STOCK	13
270 FMS	2 1/2" STUD CHAIN CABLE	720%
90	5" S.W.R. STREAM LINE	
120	4 3/4" TOWLINE	
2 @ 90 FMS	2 3/4" S.W.R. HAWSEER	
2 @	2 1/2" S.W.R. WARPS	

NOTE. ALL CHANNELS AND BULB ANGLES TO NEW BRITISH STANDARD SECTIONS



Doxford's

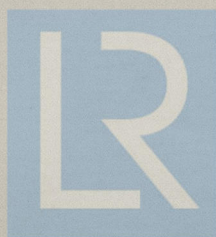
647

Middleup Section

As built.

"Ittersum"

SUNDERLAND RPT. NO. 32477.



© 2021

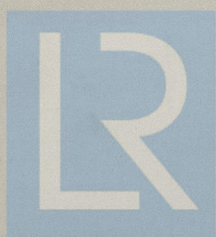
Lloyd's Register
Foundation

009996-009903-0123

Messrs Wm Foxford & Sons
Yard no 647.

sp "Itterum"

Sunderland Hist Entry Report
no 32477.



© 2021

Lloyd's Register
Foundation