

# LLOYD'S CLASS 100 A. 1" WITH FREEBOARD.

NB. ALL SECTIONS USED THROUGHOUT THE SHIP ARE  
REVISED BRITISH STANDARD SECTIONS.

PRINCIPAL DIMENSIONS			
LENGTH	(L)	445'0"	
BREADTH MOULDED	(B)	60'6"	
DEPTH TO UPPER DECK		10'3"	
LOADED DRAUGHT (FROM TOP OF KEEL)		26'03"	
DEPTH 'D' FOR SCANTLING NUMERALS	(D)	40'75"	

SCANTLING NUMERALS			
1 <sup>st</sup> LONGITUDINAL NUMERAL	(L1/D)	445'0/75 = 18.134	
2 <sup>nd</sup> LONGITUDINAL NUMERAL	(L2/D)	445'0/1025 = 45.056	
PROPORTION TO UPPER DECK		445'0/75 = 10.92	

EQUIPMENTS & EQUIPMENT NUMBER			
EQUIPMENT NUMBER	46196		
LETTER	d1		

EQUIPMENTS			
3-BOWER ANCHORS STOCKLESS COLLECTIVE	232		
STREAM ANCHOR ORDINARY EX. STOCK	233		
STUD CHAIN CABLE	300 FMS	2 1/2" DIA.	
STEEL WIRE FOR STREAM ANCHOR	120	4 1/2" CIR. (24 WIRES)	
TOW LINE STEEL WIRE	130	5 1/2" CIR. (DE)	
HAWSER MANILA	2-100	8" CIR.	
WARPS	2-100	8" CIR.	

FORGING & CASTING			
STEM (ROLLED MILD STEEL)		10 1/2" x 2 1/2"	
STERN FRAME AS PER PLAN			

KEEL & SHELL PLATING			
KEEL PLATE		55 x 85 ~ 75	
BOTTOM		67 ~ 52	
SIDE		65 ~ 49	
BOSS		75	
FILE SIDE PLATE		44	
SHEER STRAKE	65 x 78 (RULE SIZE 52 x 74) ~ 49		
BELOW SHEER STRAKE	65 (RULE SIZE 52 x 70) ~ 49		

ENGINE CASING			
COAMING PLATE		30, 34 WHERE EXPOSED	
CASING		25, 30	
COAMING ANGLE		3 x 3 x 30A 3 x 3 x 34A	
STIFFENERS		3 x 2 1/2 x 30A 3 x 3 x 34A SPACED APART	

DECK HOUSES			
	UPPER DECK	BRIDGE DECK	BOAT DECK
COAMING PLATE	30	28	25
HOUSE PLATE	25	25	25
COAMING ANGLE	6 x 3 x 32A	6 x 3 x 32A	6 x 3 x 32A
TOP	3 x 3 x 30A	3 x 3 x 28A	2 1/2 x 2 1/2 x 25A
STIFFENERS	3 1/2 x 2 1/2 x 32A	3 x 2 1/2 x 30A	3 x 2 1/2 x 25A
SPACING	SPACED ABOUT 33" APART		

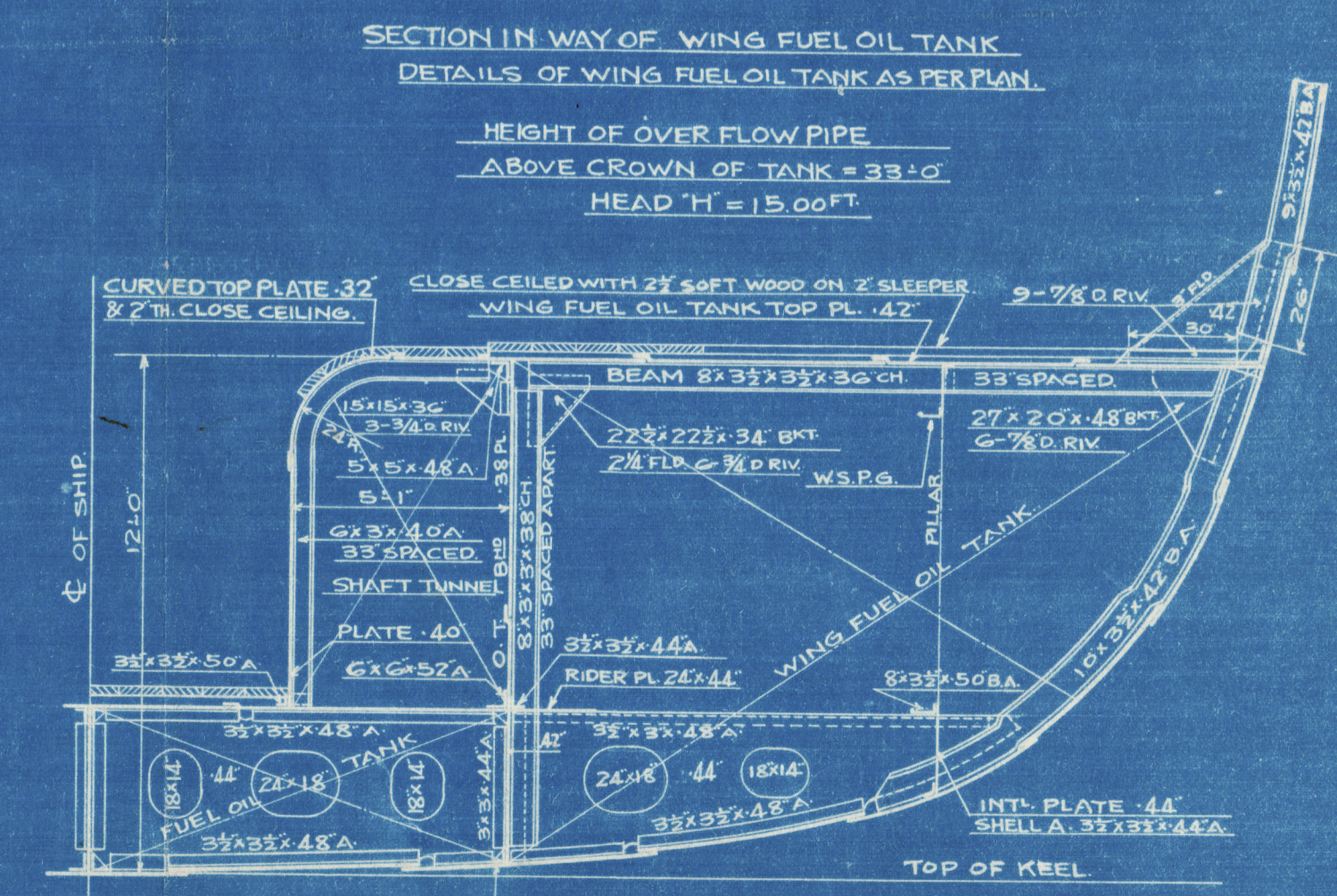
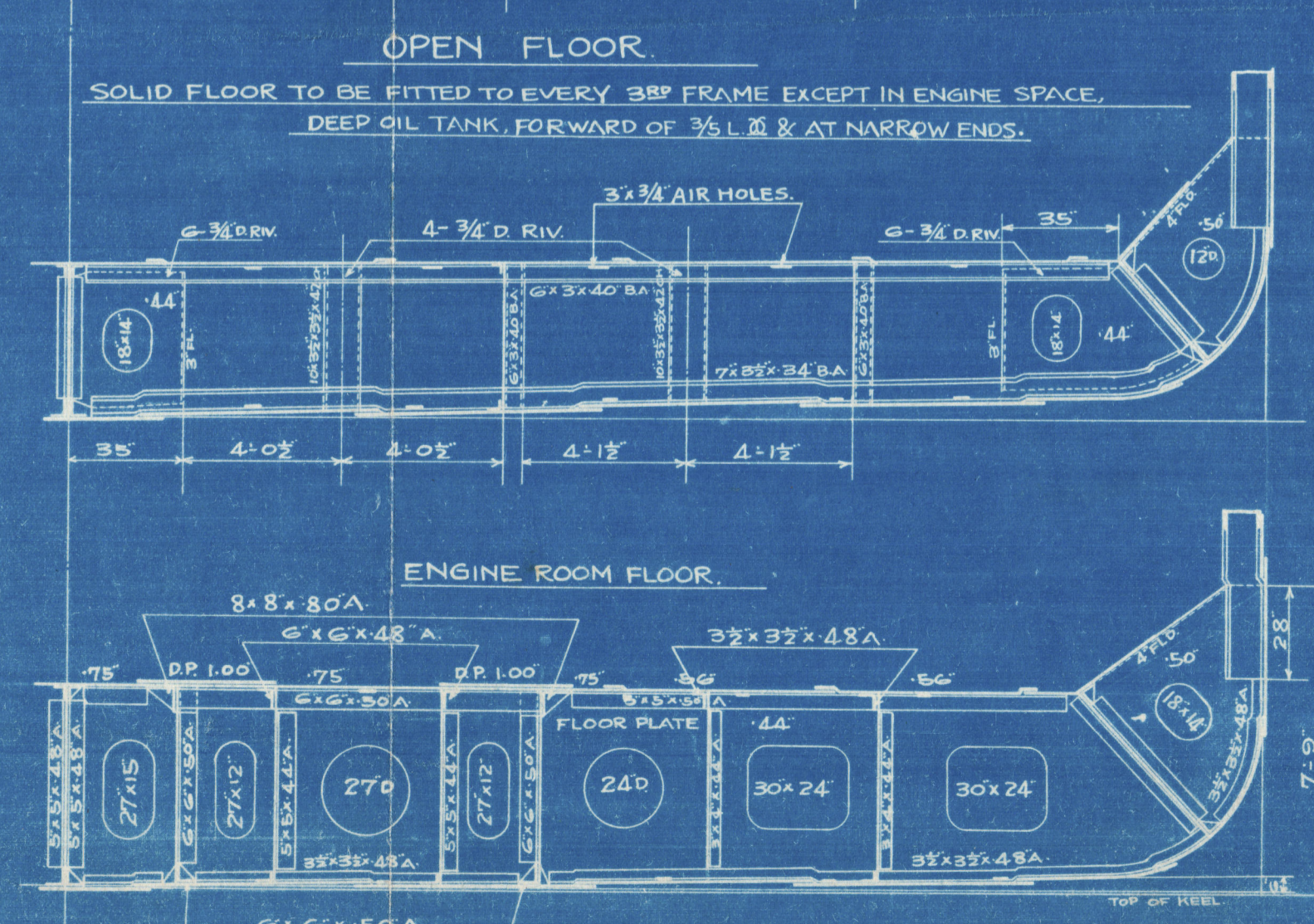
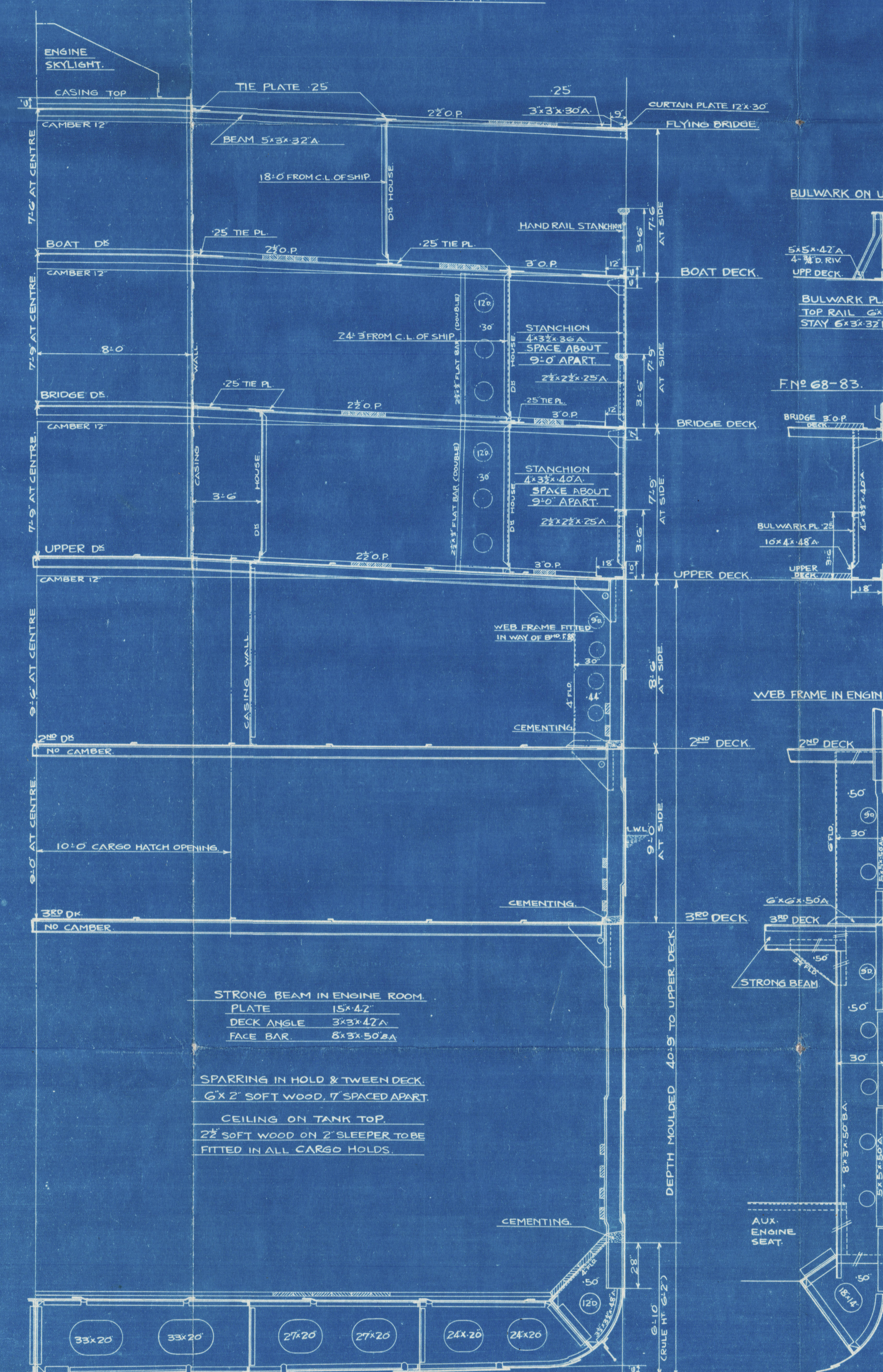
BILGE KEEL (115' G' AMIDSHIPS)			
BULB PLATE		10 1/2 x 50	
CONNECTING BAR		5 x 5 x 50A	
DEPTH OF GIRDER		13	

DOUBLE BOTTOM			
	1/2 L @ ENDS	ENGINE SPACE	REMARKS
CENTRE GIRDER	PLATE 46 x 62 ~ 48	60 x 62	
	KEEL ANGLE 5 x 5 x 60 ~ 60A	5 x 5 x 60A	
	TOP 3 1/2 x 3 1/2 x 52A	3 1/2 x 3 1/2 x 52A	UNDER
	VERT 3 1/2 x 3 1/2 x 48A	5 x 5 x 48A	5 x 5 x 48A THRUST SEATING
SIDE GIRDER	PLATE 44	44	UNDER
	TOP ANGLE 3 1/2 x 3 1/2 x 48A	3 1/2 x 3 1/2 x 48A	3 1/2 x 3 1/2 x 48A THRUST SEATING
	BOTTOM 3 1/2 x 3 1/2 x 48A	3 1/2 x 3 1/2 x 48A	
	VERT 3 1/2 x 3 1/2 x 42A	3 1/2 x 3 1/2 x 42A	
SOLID FLOOR	PLATE 44	44	
	FRAME 3 1/2 x 3 1/2 x 48A	3 1/2 x 3 1/2 x 48A	5 x 5 x 48A FOR 3/4 L @ ENDS
	REV. FRAME 3 1/2 x 3 1/2 x 50A	6 x 6 x 50A	6 x 6 x 50A THRUST SEATING
W.T. FLOOR	PLATE 52	52	
	BOUNDARY 3 1/2 x 3 1/2 x 52A	3 1/2 x 3 1/2 x 52A	
	STIFFENER 3 1/2 x 3 1/2 x 48A	3 1/2 x 3 1/2 x 48A	SPACED 30" APART
INNER BOTTOM	ML STRAKE 56 x 56 ~ 46	75	
	OTHER 48 ~ 42	56	
	MARGIN PL 40 x 56	56	
	TOP SHELL 55 x 56A	5 x 5 x 56A	

(DETAILS OF SCANTLING UNDER MAIN ENGINE SEATING AS PER SKETCHES)  
NB 7 TANK TOP PLATES FITTED TRANSVERSELY IN WAY OF BULKHEAD EXCEPT MARGIN PLATE & MIDDLE LINE STRAKE.

STRENGTHENING OF BOTTOM FORWARD  
FROM FORWARD OF 3/4 L @ COLLISION BULKHEAD  
PITCH OF RIVET IN FRAME TO BE 55" (TWO COMPLETE ROW ON BOTH FLANGES). FRAME ANGLE 5 x 5 x 48 FROM MARGIN PLATE TO MARGIN PLATE.  
INT'L ADDITIONAL SIDE GIRDER TO BE FITTED AT 4'0" APART & 2" HT. GIRDER EXTENDING AS FAR FORWARD AS PRACTICABLE.  
FLOOR PLATE OR INT'L SIDE GIRDERS ARE NOT TO BE FLANGED.  
SHELL PLATING, THREE STRAKES NEXT THE KEEL TO HAVE MIDSHIP THICKNESS .67" MAINTAINED (FORWARD TO COLLISION BULB)

RIVETING NOTE (EDGE CONNECTION)			
KEEL PLATE	2R		
BOTTOM PLATE	2R		
SIDE PLATE			
SHEER STRAKE			
BELOW STRAKE	2R	2R	
FILE SIDE PL		1R	
ML STRAKE	2R	2R	
OTHER			
MARGIN PLATE	2R	2R	
UP DECK STRINGER PL	1R	1R	
" " PLATE			
ALL OTHER DS PL	1R	1R	
	1/2 L @	AT ENDS	



DECKS			
	BOAT DECK	BRIDGE DECK	FILE DECK
STRINGER PLATE	27 x 30	30 x 32	34 x 34
ANGLE	3 x 3 x 30A	3 x 3 x 32A	3 x 3 x 34A
SHELL ANGLE			
G.WATERWAY ANGLE	FLAT BAR .46 WELDED		
DS PLATE	.25 TIE PLATE	.25 TIE PLATE	.36
CURTAIN PLATE	12 x 30	BULWARK PL. .25	
WOOD PLANK	2 1/2" x 30" INSIDE HOUSE	2 1/2" x 30" INSIDE HOUSE	

UPPER DECK			
	2 <sup>ND</sup> DECK	3 <sup>RD</sup> DECK	
STRINGER PLATE	64 x 66	50 x 44	34 x 42
ANGLE	3 x 3 x 44 IN WAY OF FILE	D <sup>5</sup> PLATE 3" TO FRAME	34 x 42
SHELL	6 x 6 x 66 ~ 34 x 35 x 44	34 x 34 x 44 A ~ 36A	34 x 34 x 44 A
G.WATERWAY ANG	3 x 2 1/2 x 36	48 WITH SHEATH AT SIDE	48 WITH SHEATH AT SIDE
D <sup>5</sup> PLATE	48 WITH SHEATH AT SIDE	40 ~ 32	32 ~ 42
WOOD PLANK	2 1/2" x 30" INSIDE HOUSE	34 ~ 32	30

TANK SIDE BRACKETS			
	NE 45 DEG HOLDS	ENGINE ROOM	15% FROM STEM
PLATE		.50	ELSE WHERE .50
GUSSET PLATE		CONTINUOUS	CONTINUOUS
TO FRAME		15-7/8 D.RIV.	15-7/8 D.RIV.
TO GUSSET		6-7/8 D.RIV.	8-7/8 D.RIV.
TO MARGIN PLATE		15-7/8 D.RIV.	15-7/8 D.RIV.
V-ANGLE ON MARGIN PL		5 x 5 x 48A	5 x 5 x 48A
" " ON FLOOR PL		5 x 5 x 48A	5 x 5 x 48A
GUSSET PLATE		.50	.48
NO OF RIV IN WAY TO FRAME		22-7/8 D.RIV.	22-7/8 D.RIV.
OF TANK TOP PLATE		20-7/8 D.RIV.	20-7/8 D.RIV.

FRAMINGS			
	FRAME SPACE		
BOTH PEAKS		24	
FORWARD OF 3/4 L @		27	
ELSE WHERE		33	

FRAMING DEPTH (d)			
	ACTUAL (d)	CORRECTED (d)	
IN WAY OF ENGINE ROOM	18'3"	18'0"	
" " HOLD	19'5"	19'1"	
" " WING F.O. TANK	8'2"	19'4"	
" " DEEP FRAME SYSTEM	23'0"	23'0"	

RIVETING NOTE (END CONNECTION)			
	1/2 L @	AT ENDS	
KEEL PLATE	LAPPED & 4R	LAPPED & 3R	
BOTTOM		4R	3R
SIDE		3R	3R
SHEER STRAKE		4R	3R
BELOW		4R	3R
FILE SIDE PLATE			1R
INNER BOTTOM			
ML STRAKE	LAPPED & 3R	LAPPED & 2R	
OTHER	1/2 L @	2R	
MARGIN PLATE		3R	
CENTRE GIRDER		4R	3R
UPPER DECK STRINGER PL	4R UP	4R	3R
" " PLATE	4R UP	4R	3R
2 <sup>ND</sup> DECK STRINGER PL		3R	2R
" " PLATE		2R	1R
3 <sup>RD</sup> DECK STRINGER PL		1R	1R
" " PLATE		1R	1R
FILE DECK STRINGER PL			1R
" " PLATE			1R
BRIDGE DECK STRINGER PL	LAPPED & 1R		
" " PLATE		1R	
BOAT DECK STRINGER PL		1R	
" " PLATE		1R	

M.V. "KINAI MARU".  
Nagasaki Report No. 1787.

MIDSHIP SECTION.  
SCALE 1/4 INCH TO 1 FOOT.  
(44.5' x 60' x 6' x 40' 9")  
(FINISHED PLAN)

