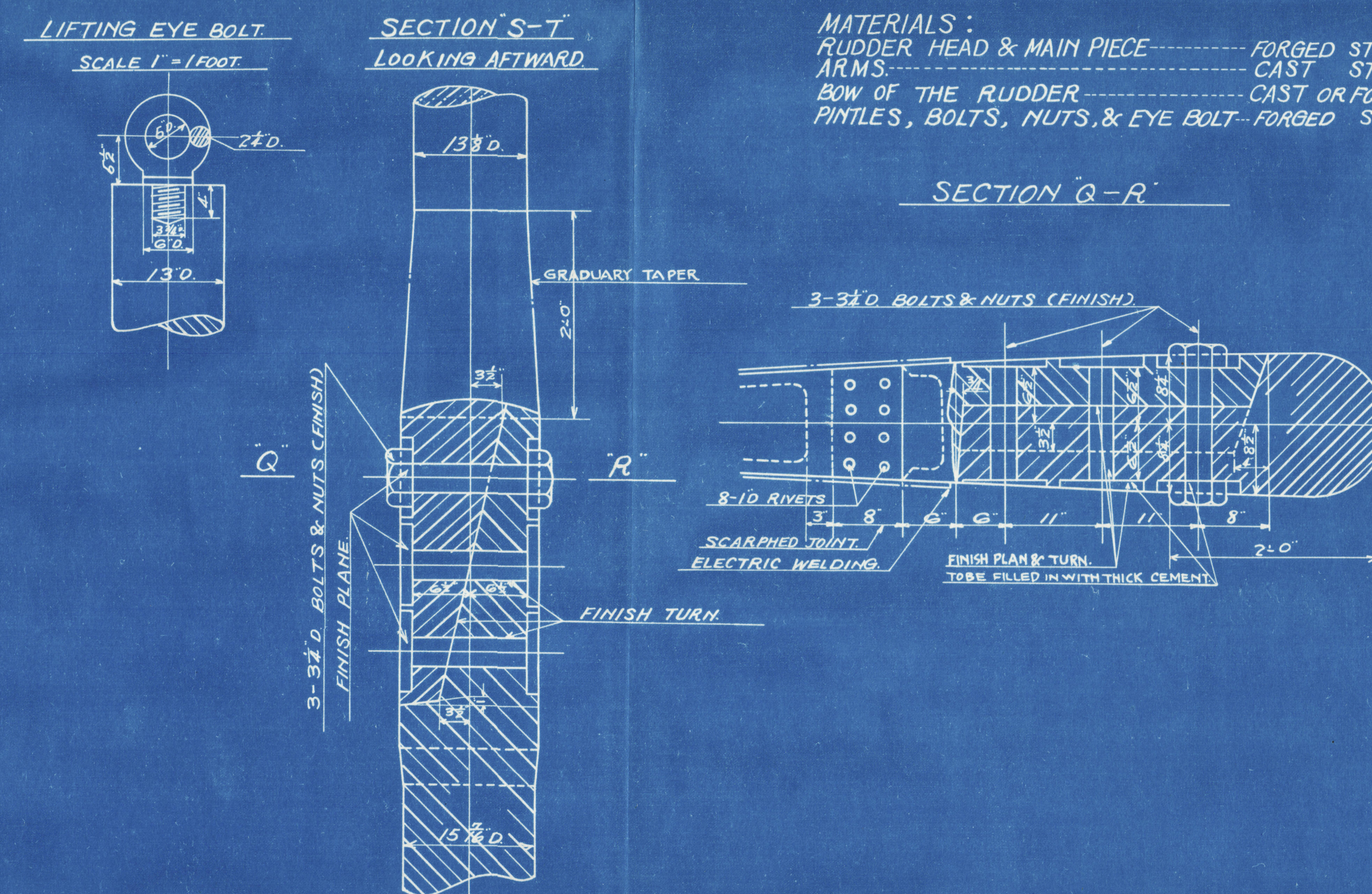


1. ALL RIVETS & TAP RIVETS TO BE $\frac{7}{8}$ INCH DIA. EXCEPT THOSE OTHERWISE SPECIFIED.
2. INSIDE RUDDER SPACE TO BE PACKED WITH GRANULATED CORK MIXED WITH BITUMEN EXCEPT PINTLE COVERING PART, WHERE NO PACKING.
3. ALL BOLTS & NUTS TO BE WHITWORTH STANDARD SIZE.

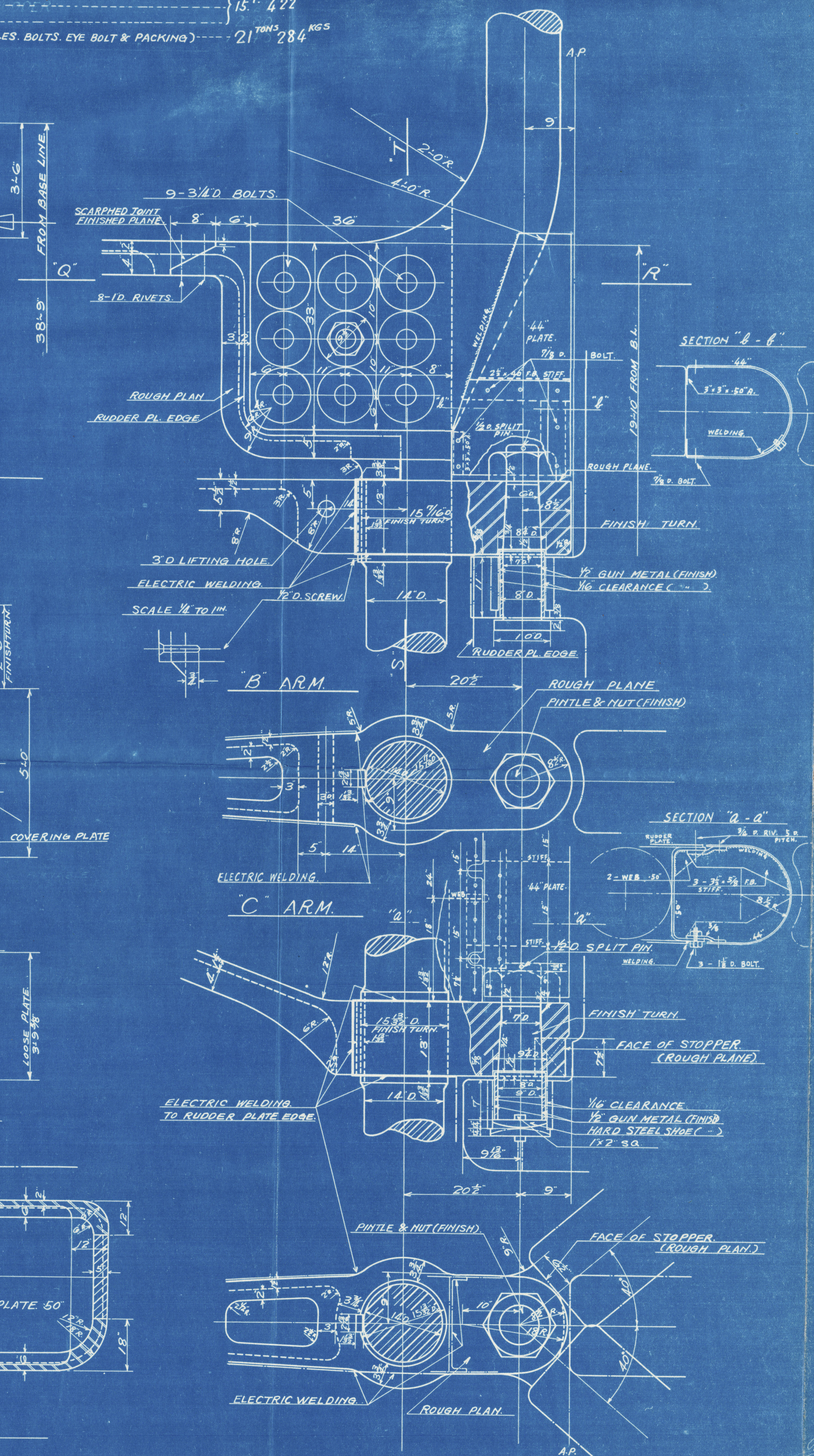
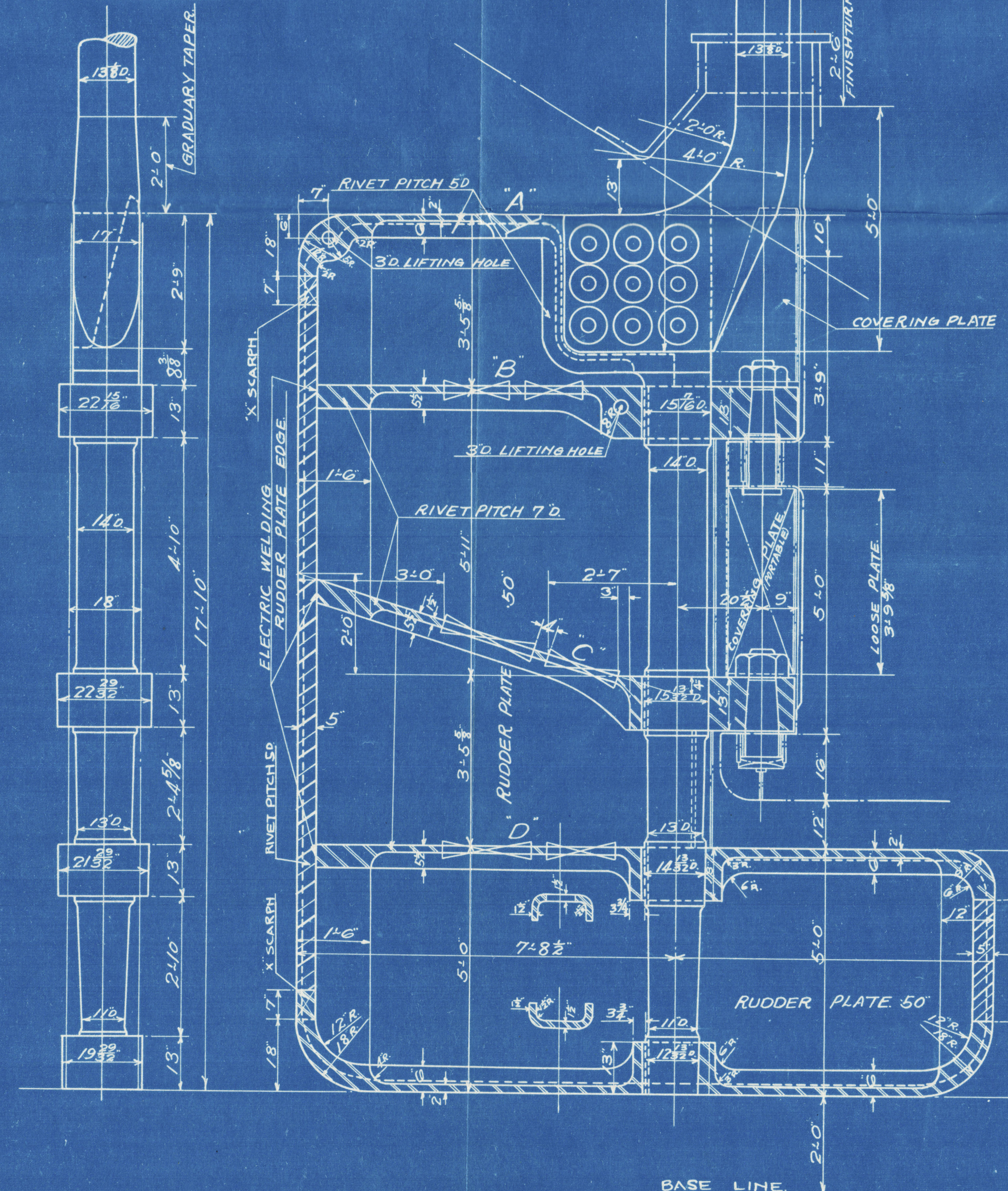
MATERIALS:
 RUDDER HEAD & MAIN PIECE-----FORGED STEEL.
 ARMS-----CAST STEEL.
 BOW OF THE RUDDER-----CAST OR FORGED S^t.
 PINTLES, BOLTS, NUTS, & EYE BOLT---FORGED STEEL.

WEIGHT :
 RUDDER HEAD ----- 5^T. 878 KGS.
 MAIN PIECE & ARMS (A,B,C,D,E.) -----
 PACKING ----- 15^T. 422 "
 PLATES -----
 TOTAL (INCL. PINTLES, BOLTS, EYE BOLT & PACKING) ----- 21^{TONS} 284 KGS

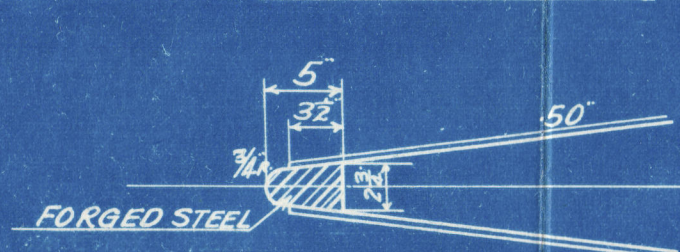
RUDDER PARTICULARS:—	
SEA SPEED	14 $\frac{3}{4}$ KNOTS.
TOTAL RUDDER AREA	185.3
RUDDER AREA EXCLUDING BALANCED PART & PINTLE COVERING LOOSE PART.	
(A)	147.18.
A x D	773.50
DIA. OF RUDDER HEAD	13 D.



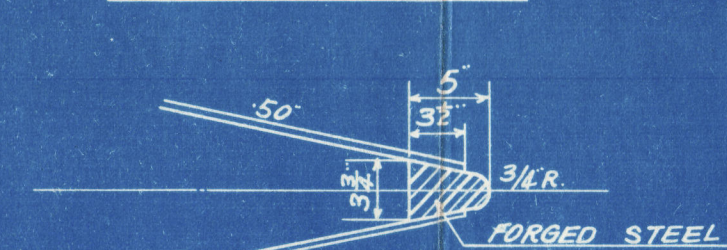
FORE END VIEW OF THE RUDDER.
LOOKING AFTWARD.



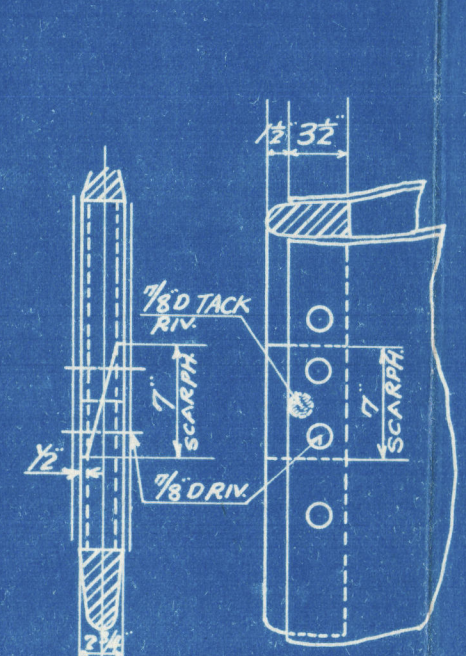
RUDDER AFT END
SCALE 1" TO 1 FOOT.



RUDDER FORE END
SCALE 1" TO 1 FOOT.



"X" SCAPH JOINT.
SCALE 1" TO 1 FOOT



M.V. "KINAI MARU".

Nagasaki Report No.1737.

RUDDER
SCALE 1/2 INCH TO 1 FOOT.
(DETAILS) 1 INCH TO 1 FOOT.
(445-0-60-6-40-5)
(FINISHED PLAN)

