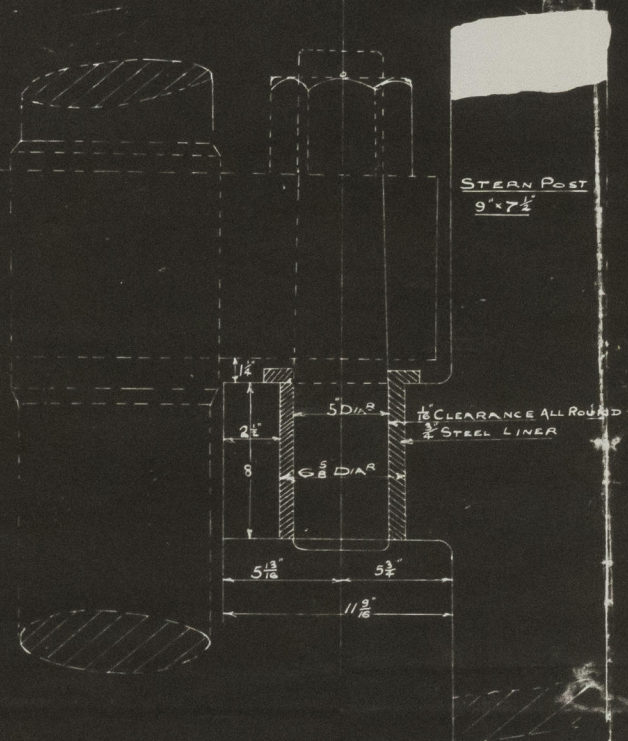
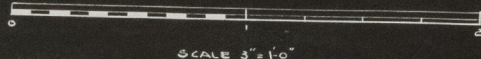
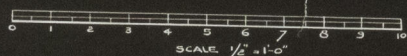
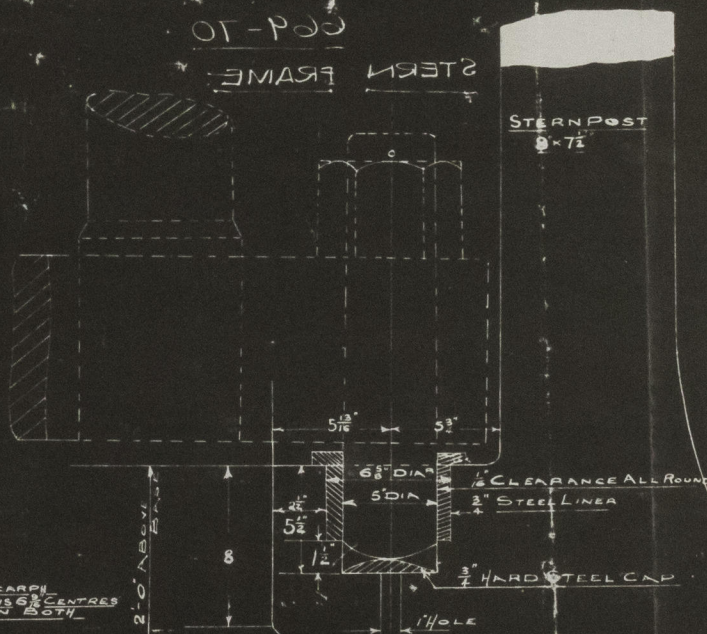


SCALE $\frac{1}{2}$ - 1 FOOT.

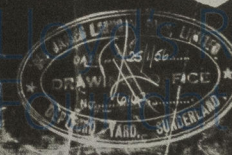
$L \cdot (B \cdot D) = 400 \cdot (52 \cdot 31) = 33200$
PROPELLOR POST 10 1/2" RUDDER POST 9 7/8"
 $A \cdot D = 148 \cdot 3 \cdot 10 = 4538$
RUDDER HEAD 10 DIA. PINTLES 5 DIA."
 STEEL CASTING



DETAIL OF GUDGEONS
SCALE 3" = 1' FOOT



DETAIL OF BOTTOM GUDGEON
SCALE 3" = 1 FOOT



Alexander's ex War Rappin
Stemframe Plan

Copy of Plan obtained from Builders
by Mr Carmack see letter dated 29.3.56
from Rotterdam.



© 2021

Lloyd's Register
Foundation