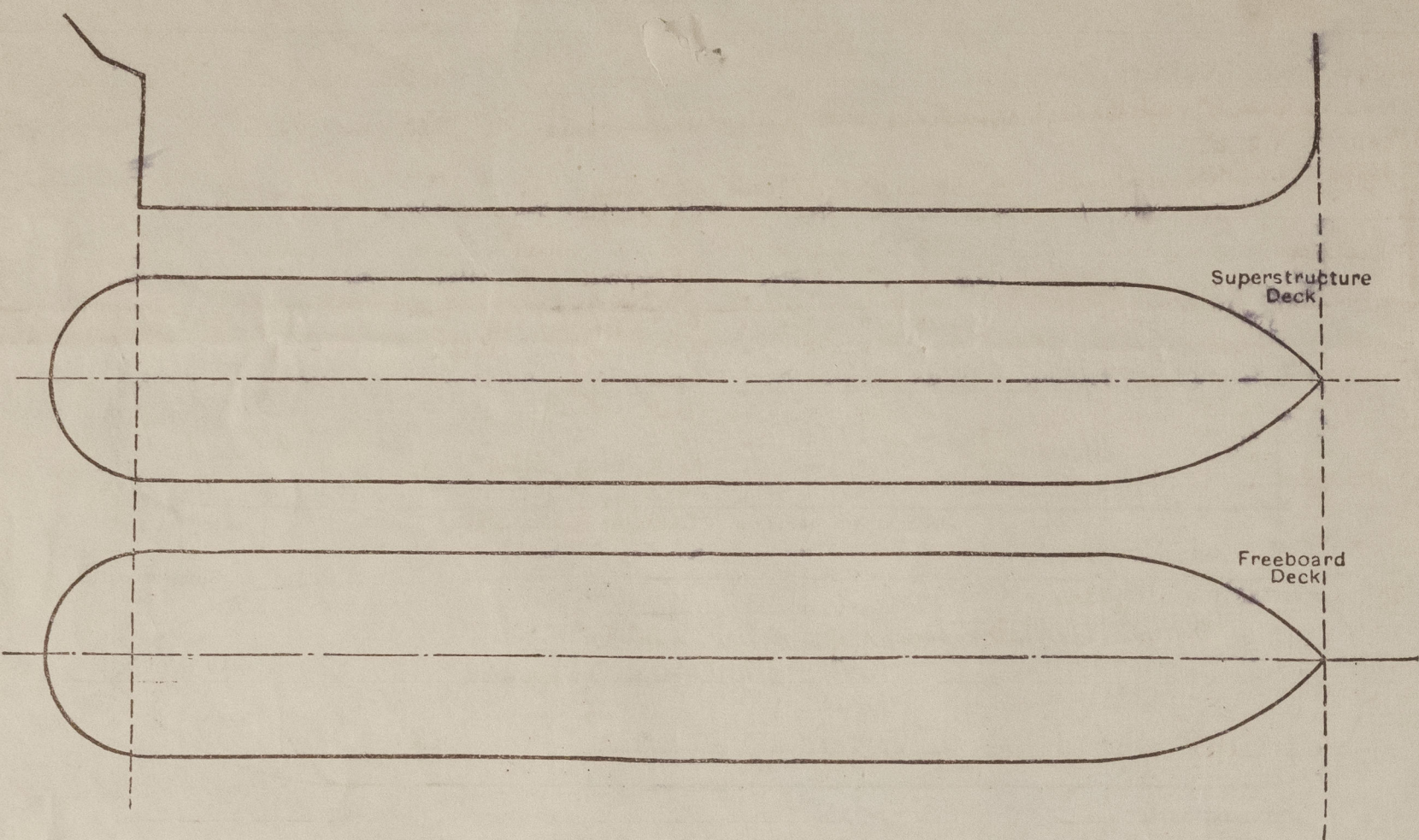


PARTICULARS OF PROTECTION TO OPENINGS, ETC.

The following diagrams should be used to indicate the positions of cargo and coaling hatchways, gangway, cargo and coaling ports, ventilators, companionways, etc., which would affect the seaworthiness of the ship :—



Particulars of fiddley, funnel and ventilator coamings, engine room skylight and other openings in machinery casing tops and their means of closing :—

Engine Room Skylight - 7'0" x 7'0", Plating .25". Coamings 7" at sides, 18" at centre
 4. Flaps through skylight - 3" @ 32" x 32" + 1 @ 23" x 23" fixed .25" thick with vent.
 Plating .19. Hinges + Quadrants, no glass fitted.

Fiddley. Funnel and Vents in efficient condition.

Particulars of Flush Bunker Scuttles :—

None.

Particulars of Companionways :—

Engineers House aft. Door post side 4.11" x 2.1" x 18" Steel. Wood, manipulated both sides, 2" Oregon Pine.
 " " " aft. end 4.11" x 2.1" x 18" " " " " " "
 Where House amidships " Door + starb. 1.12" x 2.0" x 2.1" 3/4" Steel " " " " " "

Particulars of Ventilators in exposed positions on freeboard and superstructure decks :—

1	21	14 $\frac{1}{2}$ "	dist.	C.V.	at fore end of No. 1 Hatch.	Port side.	15' fore Hold.	15' above Hatch cover.	2.3" to Cowe lip.	10" Coaming.
1	-	14 $\frac{1}{2}$ "	"	"	after " " 1.	Starb	" "	15" "	" "	" "
1	-	18"	"	"	fore " " 2.	Starb	" "	15" "	2.3 " "	10 " "
1	-	18"	"	"	after " " 3.	Port	" "	15" "	2.0 " "	10 " "
4	-	5 $\frac{1}{2}$ "	"	"	on top of Eng ⁿ . Dr. House aft.	6	House below.	12" "	House	2.5" Tube
10	-	5 $\frac{1}{2}$ "	"	"	Midship Accour.	Midship	House.	30" "	"	30 Coaming. 3.0" to Cowe lip.
2	-	8 $\frac{1}{2}$ "	"	"	Eng ⁿ . Dr. House aft.	Stairway	below.	12" "	House.	30" Tube.
1	-	6 $\frac{1}{2}$ "	"	"	" " "	Tween	Decks	12" "	"	30" "
1	-	6 $\frac{1}{2}$ "	"	"	" " " Galley.	"	Galley	12" "	"	30" "
1	P.I.S.	1"	"	S.N.	Raised Q ^r . Dr.	"	Coal Bunker	30" "	Deck.	3" Coaming.
8	at	6'	"	M.V.	" " " aft.	"	Crew Space aft	30" "	"	30" Tube.

Wood, plug and Canvas covers supplied to all vents.

1st dead S.N. on R.Q. D? at Stem. 30' above St. 1st Baggage Room.
after store

Particulars of Air Pipes in exposed positions on freeboard, raised quarter, or superstructure decks :— **CAST IRON AIR PIPES $\frac{3}{8}$ " THICK.**

6 diam ⁷ to Fore Peak, 18" above Deck F ⁴ .	1 P. 1. S.	S. N.	2 1/2" diam ⁷ to No. 1. Tank (E. R.) 30" above R. Q. D ⁴ .	1 P. 1. S.	S. N.
5" " " Deep Tank " " B. D ⁴ .	1. S.	"	3 " " Rudder Trunk " " " " 1. P.	"	"
3 1/2" " " after Peak 30" " " 1. P.	"	"	1 1/2" " " Deep Tank 18" " B. D ⁴ .	1. S.	"
4" " " No. 1. Tank, 36" " M. D ⁴ .	1. P. 1. S.	"			
3" " " " " 36" " " 1. P. 1. S.	"	"			
4 1/2" " " " 2. " 30" " R. Q. D ⁴ .	1. P. 1. S.	"			
5" " " " " 30" " " 1. P. 1. S.	"	"			
2 P. S. " " E. R. Deep Tank 30" " " "	"	"			

Wood plugs and canvas covers fitted to all air P.

Wood plugs and canvas covers fitted to all air pipes.

Particulars of Gangway Cargo and Coaling Ports:—

None.

Particulars of Scuppers and Sanitary Discharge Pipes :—

AFT 2. P. + S. on Main B ^N		cut through shearstake and deck stringer angle. Size 6"x3"	
" 8. P. + S. " R. Q. B ^N	" "	" "	" "
" 2" Scupper (S.V. JHD)	overboard. 4' 9"	below B ^N led from	A.R.P. Store. Port.
" 2" " " "	5' 4"	" " " "	S.G. Comp ^t
" 2" Discharge " " "	" " "	" " " "	Starb ^t
" 4" " " "	4' 9"	" " " "	Galley Sink
" 2" " " "	5' 2"	" " " "	Eng ⁿ W.C. Port.
" 2" " " "	" " "	" " " "	Boat ^s Scupper Port.
" 4" " " "	5' 1"	" " " "	Mess Room Sink. Starb ^t
U.D. 2" " " "	" " "	" " " "	Crews W.C. "
" 1" " " "	1' 6"	" " " "	Bath. Port.
" 2" " " "	2' 6"	" " " "	W.C.
" 2" " " "	1' 6"	" " " "	Painting Sink. Starb ^t
" 2" Scupper " " "	" " "	" " " "	Galley. Port.
" 1 1/2" Discharge " " "	9"	above " " "	Captains Basin. Starb.

Particulars of Side Scuttles:—

10" diamo to Crew Spaces aft. 8. Port. 7. Starb^d.
10" " " Officers Quarters amidships. 3. Port. 2. Starb^d.
16" " " " " 2. after end. 3 fore end.
10" " " " " 1. " " 3 " "
all fitted with Hinged Deadlights.

Vertical distance of Sill of lowest Side Scuttle above top of keel..... 21' 2"

Particulars of Guard Rails :—

Steel Bulwarks on M.D. (98. D⁴) in forward Well. 4' 0" high, efficiently constructed and supported.
 " " " R.Q. D⁴ 3' 0" " " " "
 " " " B.D⁴ 4' 0" " " " "
 Guard Rails on Ice. D⁴ 3' 0" high, with 2 chains and stanchions, linged to deck, 4' 0" apart.

Particulars of Gangways, Lifelines, etc.:—

Wood gangway from ladder at fore end of Bridge to No. 1 Hatch. Starb^d. side only.
2 1/2" Manila life line from deck front. to fore end of Bridge, in stanchions 3' 6" high.
One row of stanchions 7' 6" apart, to take life line, efficiently attached to Hatch sides.

Particulars of Freeing Arrangements.						
	Length of Bulwark	Height of Bulwark	Size of Freeing Ports	Number each side	Area each side	Rule area each side
After Well RAISED Q ^d D ^d	148'-7"	3'-0"	20'-3" x 8', 13'-6" x 8" 3'-0" x 18'-9" on frame 1.	3. 1.	31.22	29.7 s.f.
Forward Well MAIN D ^k ...	55'-9"	4'-0"	13'-6" x 8 1/2", 13'-1" x 8 1/2"	2.	13.6	11.14 s.f.
State position of each freeing port	<div style="display: flex; align-items: center;"> <div style="margin-right: 10px;"> <p>State position of each freeing port</p> <p>(F. and A. position and height above deck edge)</p> </div> <div> <p> After Well — 6' after end from Bridge 13'-3" 16'-9" + 71'-6" 9' above D^k. Forward Well — " " " " Bridge front. 1'-9" + 31'-6" 9 3/4 " " </p> </div> </div>					
State whether the freeing ports are fitted with shutters, bars, or rails, and give particulars of such:— no.						
Additional area where sheer is less than standard.						

PARTICULARS OF PROTECTION TO OPENINGS, ETC.

HATCHWAYS ON FREEBOARD AND SUPERSTRUCTURE DECKS.									
Description of Hatchway		No 1 MAIN D ^K		No 2 QUARTER D ^K		No 3 QUARTER D ^K			
Dimensions of Hatchway		45'3" x 25'9"		35'3" x 25'9"		35'3" x 25'9"			
COAMINGS	Height above Deck	3'8 1/2"		3'8 1/2"		3'8 1/2"			
	Thickness	.44"		.44"		.44"			
	Stiffeners	12 x 3 1/2 x .44 B.A.		12 x 3 1/2 x .44 B.A.		12 x 3 1/2 x .44 B.A.			
	Brackets, Stays	5 at .34. Ranged 3'		4 at .34. Ranged 3'		4 at .34. Ranged 3'			
HATCH BEAMS	Number								
	Spacing								
FORE AND AFTERS	Scantling and Sketch	as per Macgregor's approved Plan, 27.4.44.							
	Bearing Surface								
	Number	none		none.		none.			
	Spacing								
HATCH COVERS	Material	Steel.		Steel		Steel.			
	Thickness								
	How fitted	Macgregor covers as submitted and approved.							
	Bearing Surface								
Spacing of Cleats		none		none		none.			
Number of Tarpaulins									

*Are wood fore and afters steel shod at all bearing surfaces? none

Are battens and wedges efficient and in good condition? } Bunker Hatch only. Yes.

Are tarpaulins in good condition and in accordance with rule requirements? }

Are lashings provided in accordance with rule requirements? no.

Particulars of any special features:— This vessel is intended as a "Home Trade Cargo Vessel".

Timber Freeboard not required.

The vessel surveyed during construction. F.E. Report will follow on completion.

The particulars given herewith, are relating to items, not yet fitted, and are as proposed and completion of same, will be advised, with the Verification form.

Particulars of Displacement etc, as received from the Builders.

MEAN DRAUGHT.

18'0"

17'0"

16'0"

EXTERNAL DISPLACEMENT.

3740.

3503.

3270.

TONS PER INCH.

19.65.

19.41.

19.19.

Copies of Profile and Midship Section are enclosed for reference.

Endorsement at first survey and at surveys for renewal of Certificate:—

The fittings and appliances are in accordance with the particulars shown on this form (or as now modified) and are in good condition.

Ornit



© 2021

Lloyd's Register
Foundation