

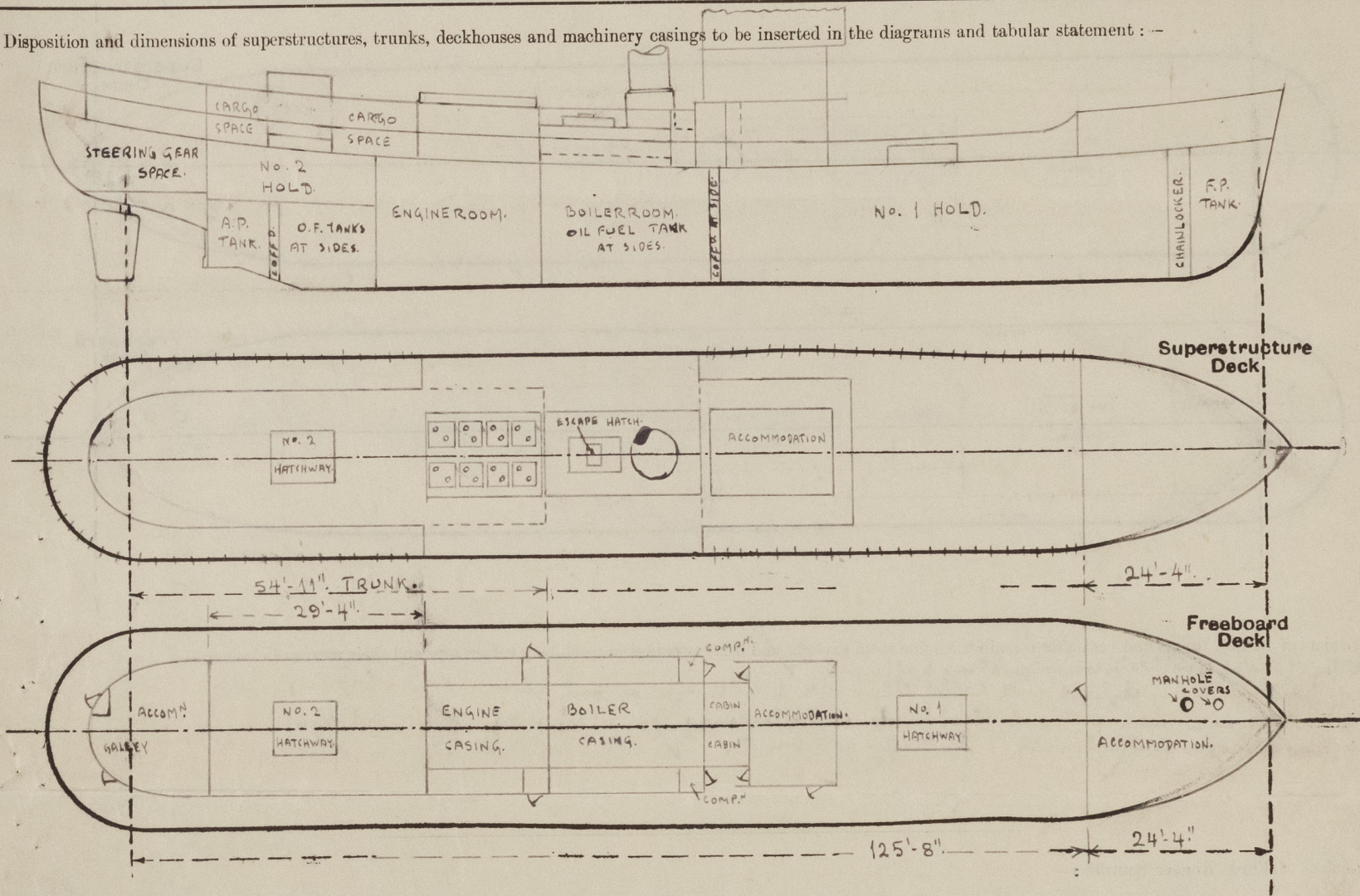
Lloyd's Register of Shipping.
SURVEYS FOR FREEBOARD.
(CONDITIONS OF ASSIGNMENT.)

12 JUN 1947

D'VORA

Ship's Name **"BONITA"** **EX "KITTERN"** Port of Survey **Bergen.**
Official Number **✓** Surveyor's Signature **J. A. Ride.**
Nationality and Port of Registry **NORWEGIAN - OSLO** Date of Survey **5th JUNE 1947.**

Disposition and dimensions of superstructures, trunks, deckhouses and machinery casings to be inserted in the diagrams and tabular statement : --



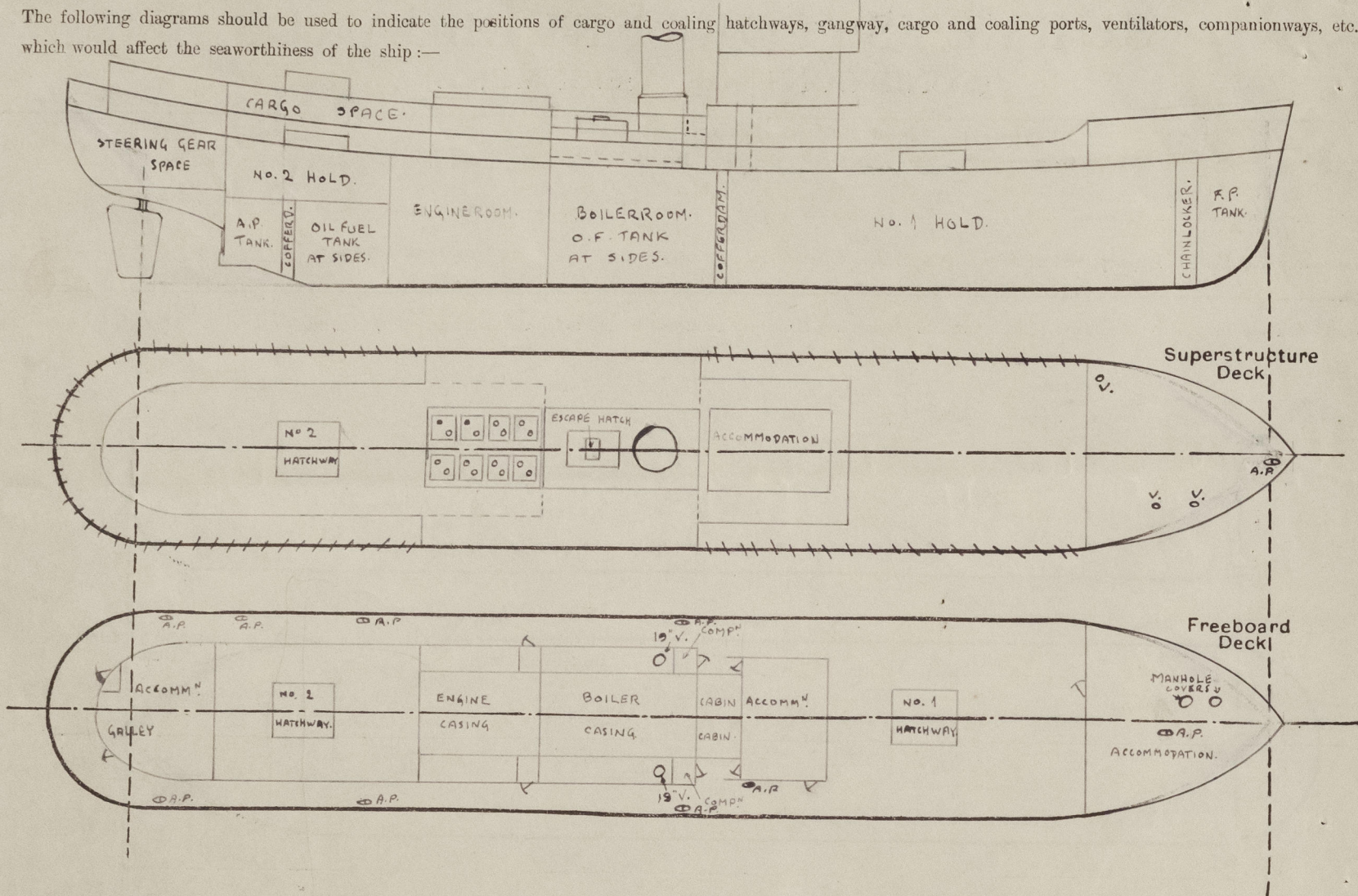
Particulars of Superstructures, Trunks, Casings, Deckhouses.								
	Coaming	Plating	Stiffeners	Spacing	End Attachments of Stiffeners	Size of Openings	Height of Sills	Height of Casings
Poop Bulkhead	✓							
Raised Quarter Deck Bulkhead ...	✓							
Bridge, After Bulkhead	✓							
Bridge, Forward Bulkhead	✓							
Forecastle Bulkhead	✓	.25"	3"x3"x.30" F & FLANGE OF BULKH PL. 2 5/8" x .25"	32"-36"	None.	27"x4'-5 1/2" ✓	19 1/2" ✓	6'-6" ✓
Trunk, Aft	✓	.28"	3"x3"x.32" F.	22"	Brackets at top.	26"x4'-5" TO ENGR. 22 1/2"x4'-0" 1ST GEAR 23 1/4"x4'-0" GALLEY	20" ✓ 24" ✓ 15" ✓	6'-10 1/2" ✓
Trunk, Forward	✓							
Exposed Machinery Casings on Freeboard or Raised Quarter Decks ...	✓	.30"	BUILT STIFF 2 1/4"x3"x.50" F 15" APART.	38"	BRACKETS TOP & BOTTOM	None.	✓	4'-5 1/2" ✓
Exposed Machinery Casings on Superstructure Decks	✓							
Machinery Casings within Superstructures not fitted with Class I Closing Appliances	✓							
Deckhouses on Flush Deck Ships ...	✓	.30"	4"x3"x.30" F	22"-30"	BRACKETS TOP & BOTTOM.	23 1/2"x4'-0"	19 1/2"	8'-2 1/2"

Particulars of Closing Appliances (state if capable of being manipulated from both sides).

Poop Bulkhead	✓
Raised Quarter Deck Bulkhead ...	✓
Bridge, After Bulkhead	✓
Bridge, Forward Bulkhead	✓
Forecastle Bulkhead	One ordinary steel door. Ordinary lock. Can be manipulated from both sides. ✓
Exposed Machinery Casings on Freeboard or Raised Quarter Decks ...	None. ✓
Exposed Machinery Casings on Superstructure Decks	
Machinery Casings within Superstructures not fitted with Class I Closing Appliances ... TRUNK AFT ...	Two watertight steel doors of Mechani's type to Eng. room. Can be manipulated from both sides. One ord. steel door to steering gear space below. One clip at side. One " " galley. Can be manipulated from both sides.
Deckhouses on Flush Deck Ships ...	Three wood doors to accommodation. Ordinary lock. Can be manipulated from both sides.

PARTICULARS OF PROTECTION TO OPENINGS. ETC.

The following diagrams should be used to indicate the positions of cargo and coaling hatchways, gangway, cargo and coaling ports, ventilators, companionways, etc., which would affect the seaworthiness of the ship :—



Particulars of fiddley, funnel and ventilator coamings, engine room skylight and other openings in machinery casing tops and their means of closing :—

1. Hatches or doors, funnel and ventilator coverings, engine room skylight and other openings in machinery casing tops and their means of access, funnel & ventilator coverings strong & efficient.
Strong steel machinery skylight with hinged flaps with 2 bulls eyes on each.
Strong steel escape hatch on top of steel trunk on boiler casing top 5'-11½" above foreward deck.
Hinged steel cover fastened with 2 butterfly screw nuts.

Particulars of Flush Bunker Scuttles:—

None fitted

Particulars of Companionways:— 1 steel companion way each side at forward end of boiler room casing giving access to stokehold. $41\frac{1}{2}'' \times 32''$ G. 8" Righ.
Machan Type W.T. steel door Opening $27\frac{1}{4}'' \times 4' 0\frac{3}{4}''$ Slight of sill 25" ✓
2 clips at outer side of door 38" apart and 1 at top and bottom.
Can be manipulated from both sides. ✓

Particulars of Ventilators in exposed positions on freeboard and superstructure decks :—

ON FORECASTLE DECK:-

~~3 @ 4" DIA. x 5" height above deck with screw-down cover to screwspace.~~

ON SLOPING BOILER ROOM CASING:-

2 @ 19" DIA. x .40" x 3'-3" well supported to stokehold ✓

Particulars of Air Pipes in exposed positions on freeboard, raised quarter, or superstructure decks :—

ON FORECASTLE DECK:

1 @ 3" DIAR. GOOSENECK type to fire peak tank 18" high above deck.

ON FREEBOARD DECK:-

1 @ 3" DIAT. GOOSENECK type to forehold inside forecaskle 18" above deck. ✓

amidships ^{31"}~~3"~~ above deck.

1 @ 3" " " " " O.F. tank port & starboard amidships 31" height above deck.

1 @ 3" n - - - - - 31" - - - - -

1 @ 2 1/2" " " " aft peak tank port side 31" " " " "

1 @ 3" "	"	"	"	F.W. tanks port and Starboard aft.	31" "	"	"	"
----------	---	---	---	------------------------------------	-------	---	---	---

AIRPIPES to O.F. tanks fitted with wire gauze. ✓

All other AIRPIPES provided with wood plugs.

Particulars of Gangway Cargo and Coaling Ports:—

None fitted

Particulars of Scuppers and Sanitary Discharge Pipes :—

of Scuppers and Sanitary Discharge Pipes :-

1 - 4" Dia. discharge from W.C. port side ^{on freeboard deck} 4'-4" below freeboard deck with storm valve.

1 - 4" Dia. " " " " Starboard ^{on freeboard deck} and ships 3'-8" " " " " " " " " " " " "

Scuppers on foreboard deck cut in sheer strake above deck.

Particulars of Side Scuttles :—

No sidelights below freeboard deck. ✓
4 sidelights Starboard & 4 on port side forecastle, each 10" dia.
and 1 port side forecastle 6½" Dia.
all above sidelights brass frames with hinged C.I. deadlights.

Vertical distance of Sill of lowest Side Scuttle above top of keel

None below freeboard deck.

Particulars of Guard Rails :—

On Forecastle Stanchions 6'-7" - 7'-0" apart, 37" high. 4 through rods. ✓
On Boatdeck Stanchions 6'-6" apart. Toprail 2 1/2" x 2 1/2" angle bar
3 through rods. Stanchions 40" high. ✓

Particulars of Gangways, Lifelines, etc. :— *Lifelines fitted from the forecabin to the amidship accommodation*

~~None fitted.~~

Particulars of Freeing Arrangements.						
	Length of Bulwark	Height of Bulwark	Size of Freeing Ports	Number each side	Area each side	Rule area each side
After Well	125' - 8"	39" - 40"	27 1/4" x 12 1/2"	6. 4	✓ 21.3 ft 14.2 sq ft	26 sq ft
Forward Well						21.3 ft sq ft

State position of each freeing port
(F. and A. position and height above deck edge) { ~~After~~ Well:— 14'-11", 31'-1", 40'-7", 68'-6", 83'-0" & 107'-7" abaft forecastle bulkhead
Forward Well:— 4 3/4' above deck edge. ✓

State whether the freeing ports are fitted with shutters, bars, or rails, and give particulars of such:— *Hinged shutters, pivoted at $\frac{3}{4}$ height.*

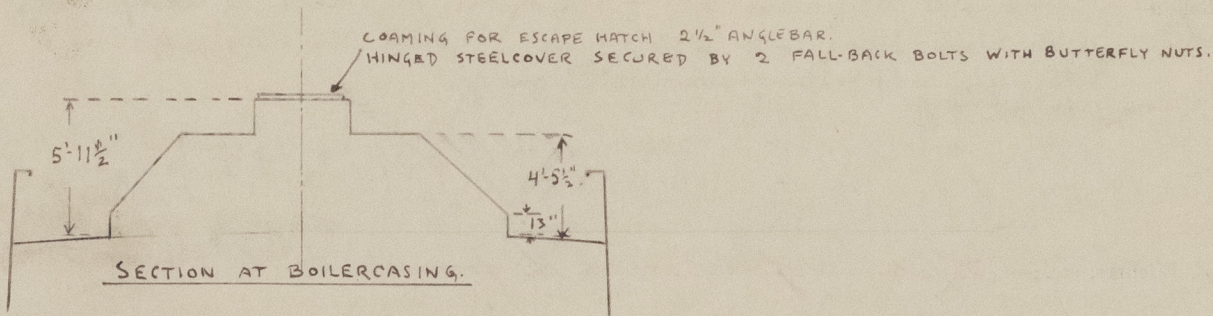
Additional area where sheer is less than standard.

PARTICULARS OF PROTECTION TO OPENINGS, ETC.

HATCHWAYS ON FREEBOARD AND SUPERSTRUCTURE DECKS.									
Description of Hatchway		NO. 1 ON FREEB. DECK.	NO. 2 ON TOP OF TRUNK.	NO. 2 INSIDE TRUNK.					
Dimensions of Hatchway		5'-1 1/4" x 6'-6 3/8"	8'-9 3/4" x 6'-6 1/4"	8'-7" x 6'-6 1/4"					
COAMINGS	Height above Deck	24" to top of ledge bar	24" to top of ledge bar	5 1/2" ABOVE TOP OF INSULN.					
	Thickness	.40"	.40"	.40"					
	Stiffeners	6" x .38" FLAT.	6" x .38" FLAT.	NONE					
	Brackets, Stays	NONE	NONE	NONE					
HATCH BEAMS	Number	1	1	1					
	Spacing	4'-7"	4'-3 1/4" - 4'-6 1/2"	4'-2" - 4'-5"					
	Scantling and Sketch	3" FLAT x .35" 	2 1/2" FLAT x .38" 	AS NO. 2.					
	Bearing Surface	3"	3"	3"					
FORE AND AFTERS	Number								
	Spacing								
	Unsupported Lengths								
	Scantling and Sketch	NONE	NONE	NONE					
HATCH COVERS	Material	PINE	PINE	PINE					
	Thickness	2 1/2"	2 1/2"	2 1/2"					
	How fitted	F. & A.	F. & A.	F. & A.					
	Bearing Surface	3"	2 1/2" - 3"	2 1/2" - 3"					
Spacing of Cleats		24"	24"	NONE					
Number of Tarpaulins		2	2	NONE					
<p>•Are wood fore and afters steel shod at all bearing surfaces? <i>Yes.</i></p> <p>Are battens and wedges efficient and in good condition? <i>Yes.</i></p> <p>Are tarpaulins in good condition and in accordance with rule requirements? <i>Yes.</i></p> <p>Are lashings provided in accordance with rule requirements? <i>Yes.</i></p>									

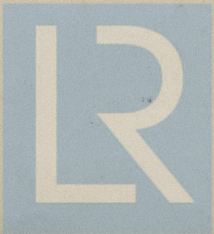
Particulars of any special features:—

This vessel was previously one of H.M.S. Swift vessels of Islay class and vessel has now been converted for carrying refrigerated cargoes.
TOP OF TRUNK STEEL PLATES UP TO FORE END ENGINE ROOM SKYLIGHT.
REMAINING PART OF BOATDECK PINE PLANKS.



Endorsement at first survey and at surveys for renewal of Certificate:—

The fittings and appliances are in accordance with the particulars shown on this form (or as now modified) and are in good condition.



© 2021

Lloyd's Register
Foundation