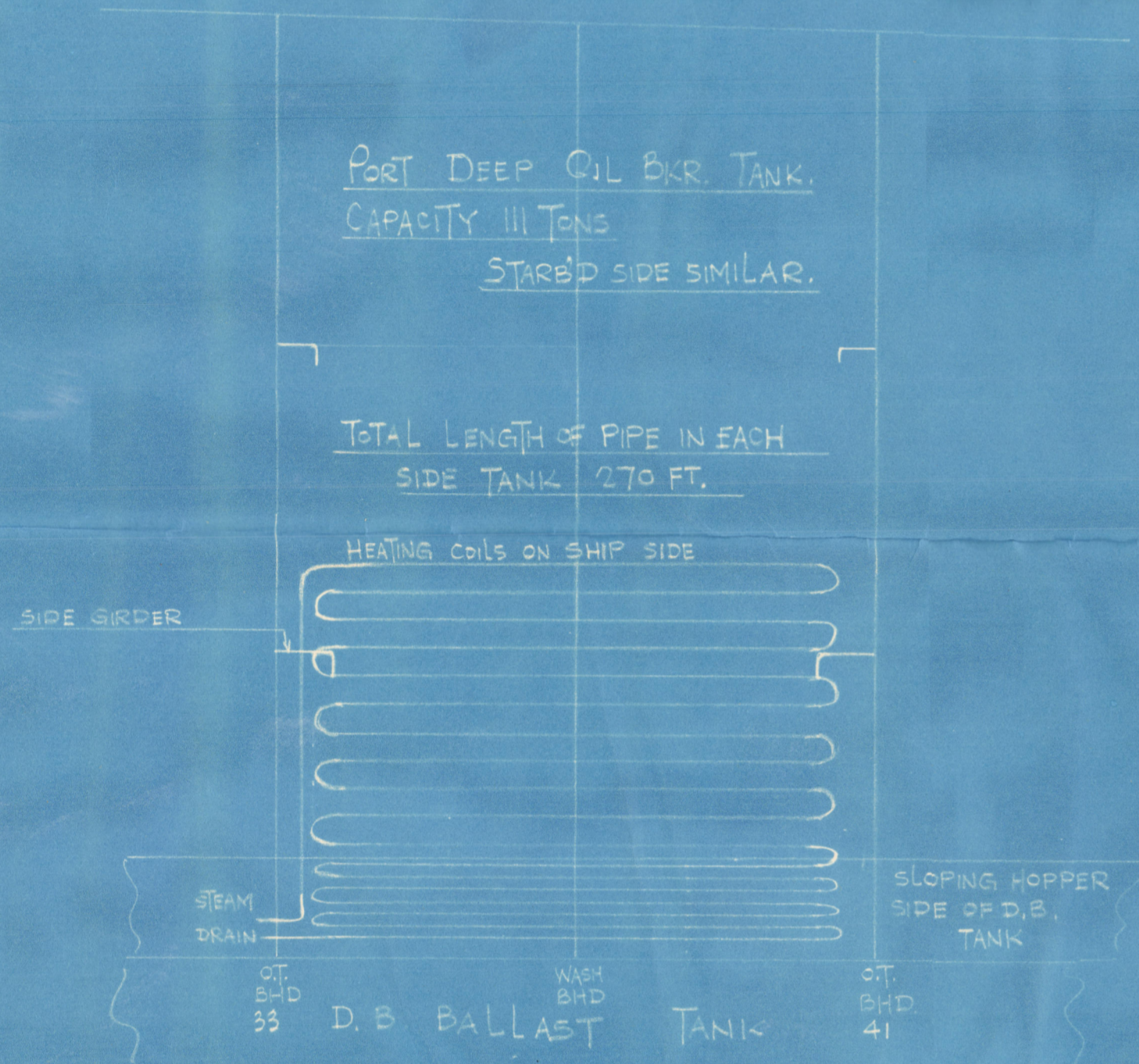


S/S "HOLMSIDE"

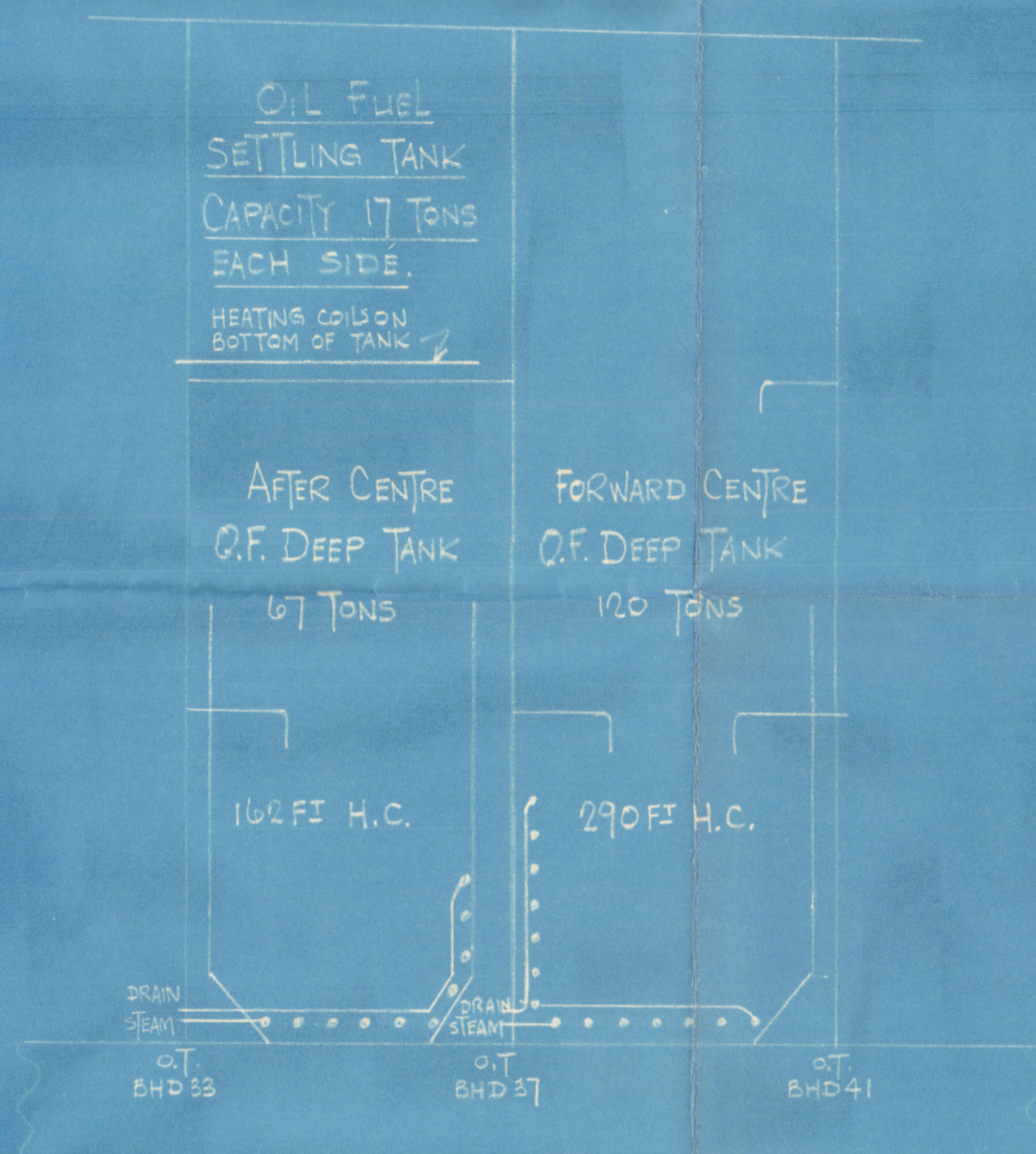
# DIAGRAMMATIC ARRANGEMENT OF STEAM HEATING COILS TO OIL FUEL BUNKER & SETTling TANKS.

SCALE 1/4" = 1 FOOT

HOLMSIDE 20705



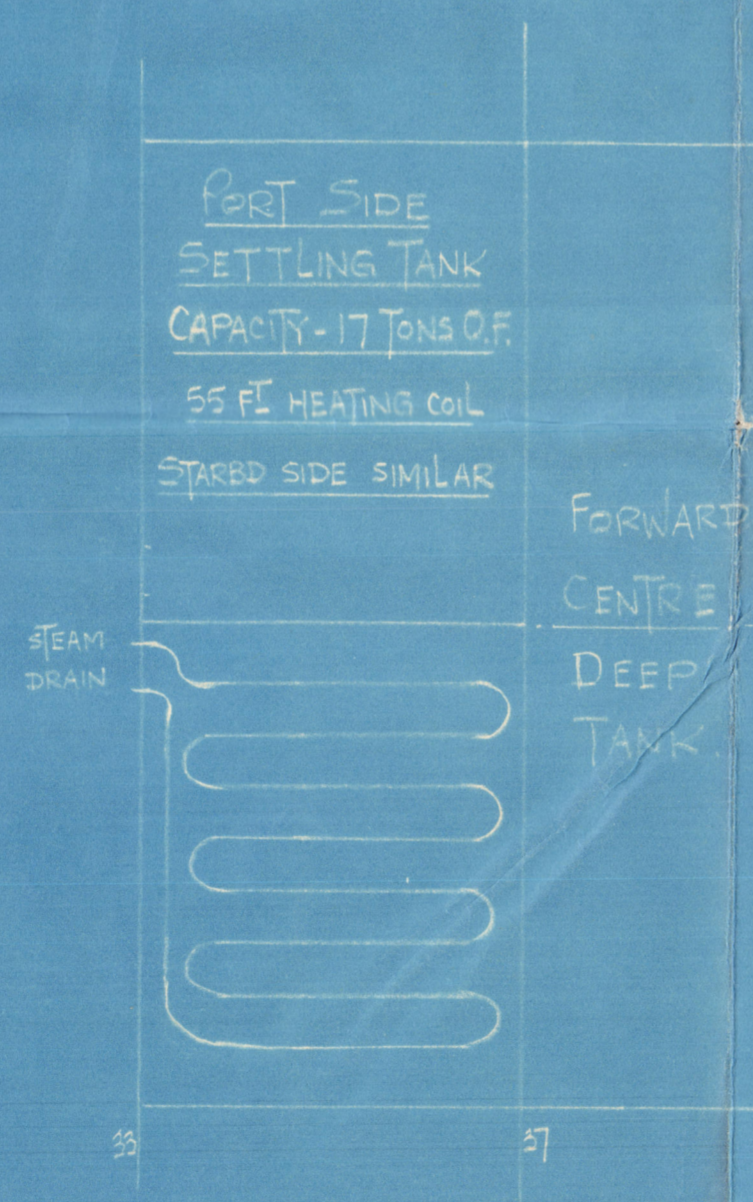
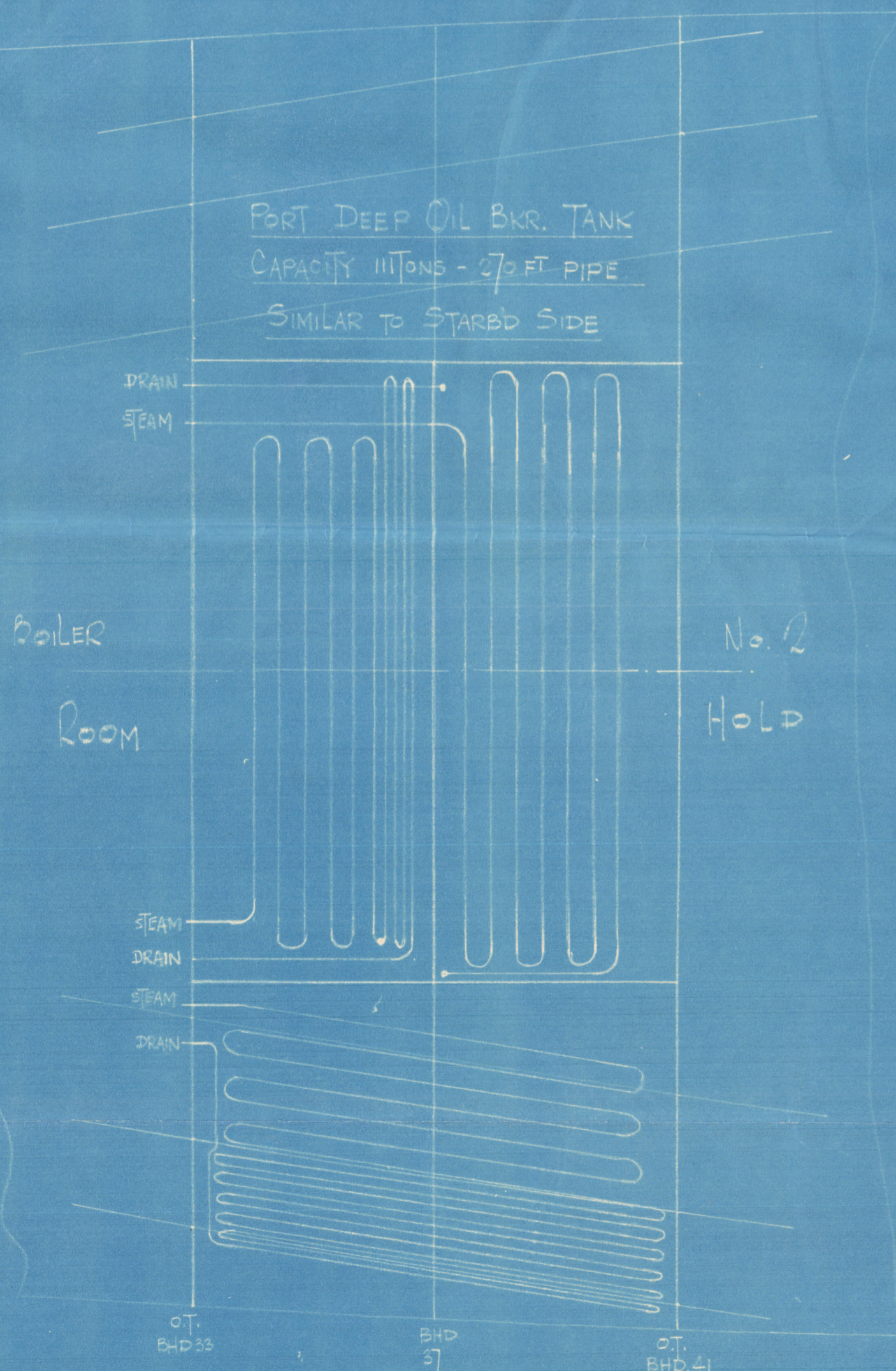
ELEVATION ON PORT SIDE DEEP TANK LOOKING TO PORT



ELEVATION ON CENTRE DEEP TANKS LOOKING TO PORT

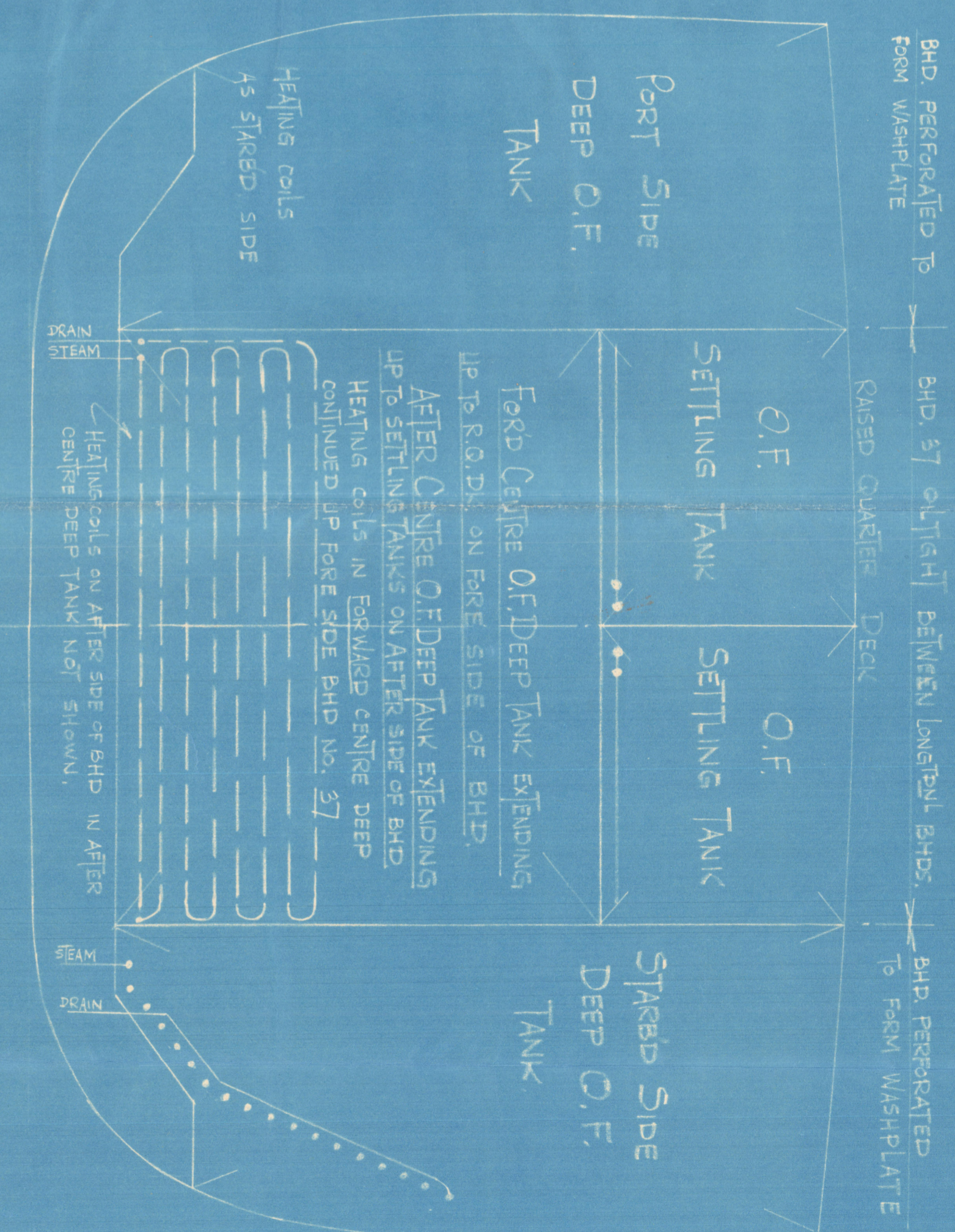
HEATING COIL SURFACE AREA IN SETTling TANKS 250 SQ. FT. PER TON CAPACITY.  
HEATING COIL SURFACE AREA IN BUNKER TANKS 1 1/2 SQ. FT. PER TON CAPACITY.  
HEATING COILS OF 2" BORE PIPING WITH FLANGE JOINTS (FLANGES WELDED TO PIPING), 806 CLASS "B" SOLID DRAWN STEEL PIPING X 6 GAUGE X 2 3/8" O.D., MINIMUM RADIUS OF BENDS 4 3/4", SPIGOT & FAUCET FLANGES WITH 2- 7/8" DIA. BOLTS. COIL TO BE FITTED ROUND EACH SUCTON.  
STEAM & DRAIN VALVES TO BE FITTED FOR EACH TANK.  
SEE "STEAM, EXHAUST & DRAIN ARRANGEMENT DRAWING."  
REDUCED STEAM WORKING PRESSURE IS 100 LBS/SQ. IN.

	TONS O.F.	HEATING COIL LENGTH IN FEET.
PORT O.F. SETTling TANK	17	55
STARBOARD O.F. SETTling TANK	17	55
PORT SIDE DEEP O.F. TANK	111	270
STARBOARD SIDE DEEP O.F. TANK	111	270
FORWARD CENTRE DEEP O.F. TANK	120	290
AFTER CENTRE DEEP O.F. TANK	67	162
TOTAL OIL FUEL CAPACITY - 443 APPROX. - TANKS 100% FULL.		



P. & S. OF SETTling TANKS - SITED OVER  
AFTER CENTRE DEEP TANK.

BHD No 37 Looking Forward.



SMITH'S Dock Co. LTD  
River Tees Dockyard.  
8 MARCH 56

© 2021

Lloyd's Register  
Foundation

FOR OIL FUEL CONVERSION OF VESSEL.