

13 APR 1950

Index No. 42232
(For London Office only).

No 32170

Lloyd's Register of Shipping.

SURVEYS FOR FREEBOARD.

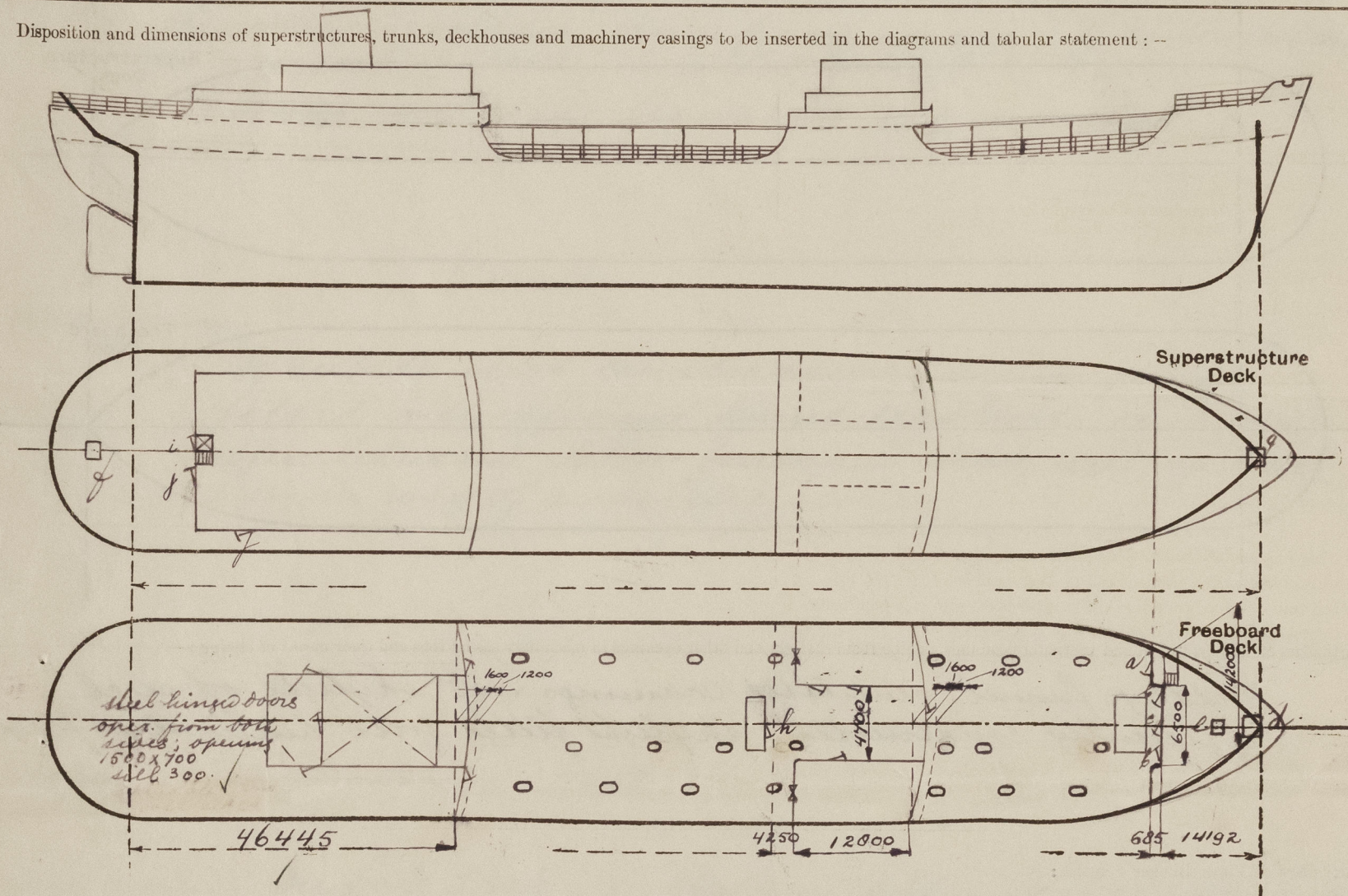
(CONDITIONS OF ASSIGNMENT.)

Ship's Name *DIRECTOR MADARIAGA*Port of Survey *Rotterdam*

Official Number

Surveyor's Signature *M. Wiskoot*Nationality and Port of Registry *Argentine Buenos Aires*Date of Survey *March 1950*

Disposition and dimensions of superstructures, trunks, deckhouses and machinery casings to be inserted in the diagrams and tabular statement: --



Particulars of Superstructures, Trunks, Casings, Deckhouses.

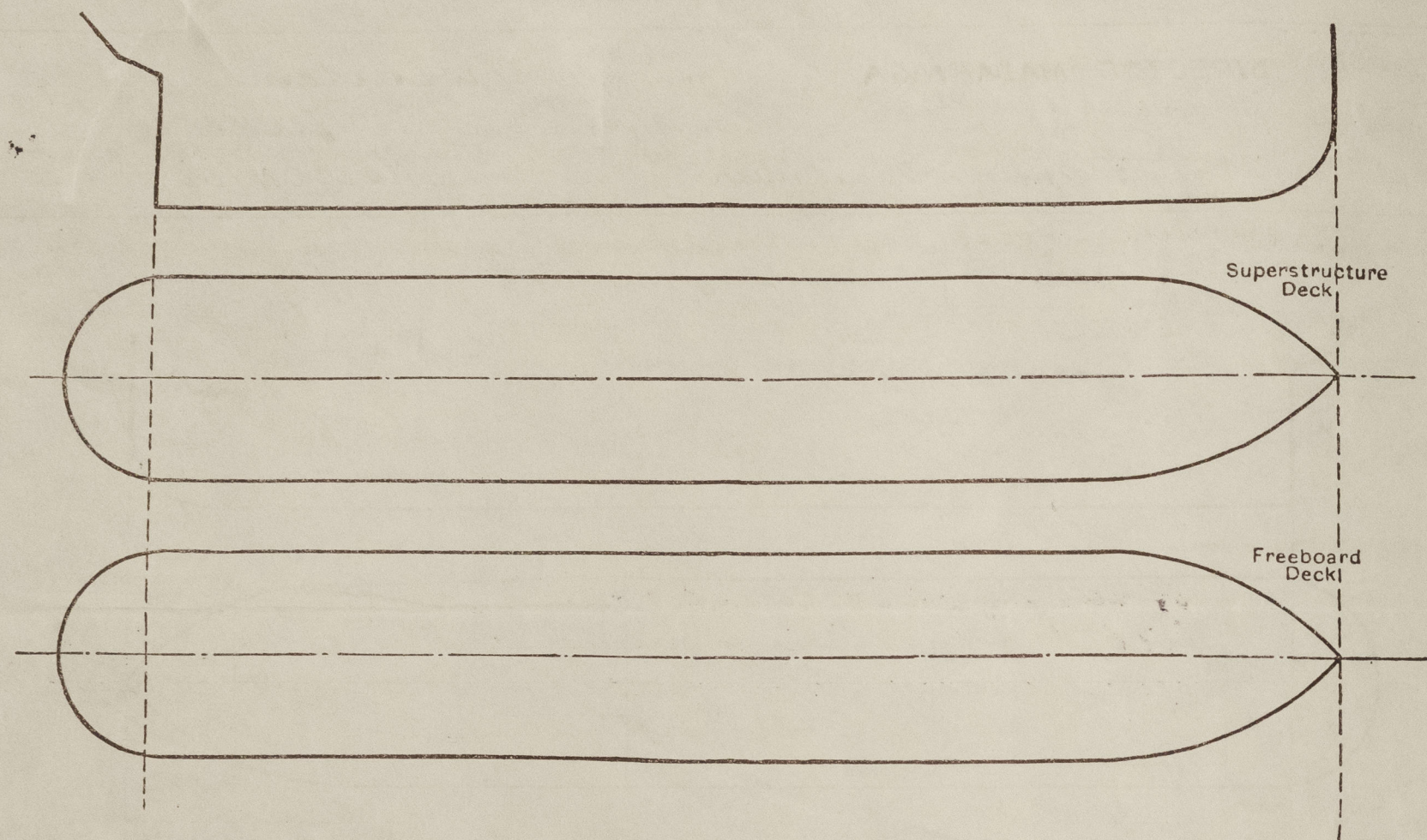
	Coaming	Plating	Stiffeners	Spacing	End Attachments of Stiffeners	Size of Openings	Height of Sills	Height of Casings
Poop Bulkhead ...	12'	11'	C 240.90.14	760	E.W.	1350x700	610	2438
Raised Quarter Deck Bulkhead ...								
Bridge, After Bulkhead ...	10'	7 1/2	L 100.65.8	800	none	5'x4"	610	2438
Bridge, Forward Bulkhead ...	11'	11'	C 250.90.14	760	E.W.	1600x700	350	
Forecastle Bulkhead ...	10'	7 1/2	L 100.75.8	760	none	2 1500x700	500	
Trunk, Aft ...		640				6 1750x630	230	
Trunk, Forward ...		291		10000.10		1600x630	370	
Exposed Machinery Casings on Freeboard or Raised Quarter Decks ...		640		965.8				
Exposed Machinery Casings on Superstructure Decks ...				992.10				
Machinery Casings within Superstructures not fitted with Class I Closing Appliances ...				10240.1500				
Deckhouses on Flush Deck Ships ...		140		315.7				

Particulars of Closing Appliances (state if capable of being manipulated from both sides).

Poop Bulkhead ...	Steel hinged, n.s. doors, capable of being manipulated from both sides
Raised Quarter Deck Bulkhead ...	
Bridge, After Bulkhead ...	Steel doors on hook bolts not passing through bulkhead
Bridge, Forward Bulkhead ...	Steel, hinged n.s. doors, capable of being manipulated from both sides
Forecastle Bulkhead ...	a, b, c Steel hinged doors
Exposed Machinery Casings on Freeboard or Raised Quarter Decks ...	" " " " " "
Exposed Machinery Casings on Superstructure Decks ...	" " " " " "
Machinery Casings within Superstructures not fitted with Class I Closing Appliances ...	" " " " " "
Deckhouses on Flush Deck Ships ...	

PARTICULARS OF PROTECTION TO OPENINGS, ETC.

The following diagrams should be used to indicate the positions of cargo and coaling hatchways, gangway, cargo and coaling ports, ventilators, companionways, etc., which would affect the seaworthiness of the ship:—



Particulars of fiddle, funnel and ventilator coamings, engine room skylight and other openings in machinery casing tops and their means of closing:—

Fiddle, funnel, ventilator coamings and skylight of steel; efficiently constructed; skylight fitted with hinged steel flaps.

Particulars of Flush Bunker Scuttles:—

none

Particulars of Companionways:—

	door opening	sill	door
a) forward pumproom	1500 x 700	500	hinged steel, m. & door
b) pumproom amidships	1350 x 700	610	
c) engine room (escape)	1600 x 650	460	
d) poop space	1450 x 780	550	hinged steel door

All doors operable from both sides.

Particulars of Ventilators in exposed positions on freeboard and superstructure decks:—

On fore	height	thickness
640	10000. 10 *	
297	965. 8 1/2 *	
640	992. 10 *	
On pumproom (bridge deck level) 484	10240. 12 1/2 *	
On poop deck 145	915. 7 *	
753	11240. 12 1/2 *	

* filled with wooden plugs and canvas covers; * filled with rain caps
Ventilator coamings over 910 in height efficiently stayed or braced etc

Particulars of Air Pipes in exposed positions on freeboard, raised quarter, or superstructure decks:—

Air pipes 460 high on poop and forecastle deck
" " 920 high on main deck.
Swan-neck type airpipes fitted with wooden plugs with chain attachment.
Airpipes over fuel tanks fitted with canvas covers.

Particulars of Gangway Cargo and Coaling Ports:—

none

Particulars of Scuppers and Sanitary Discharge Pipes:—

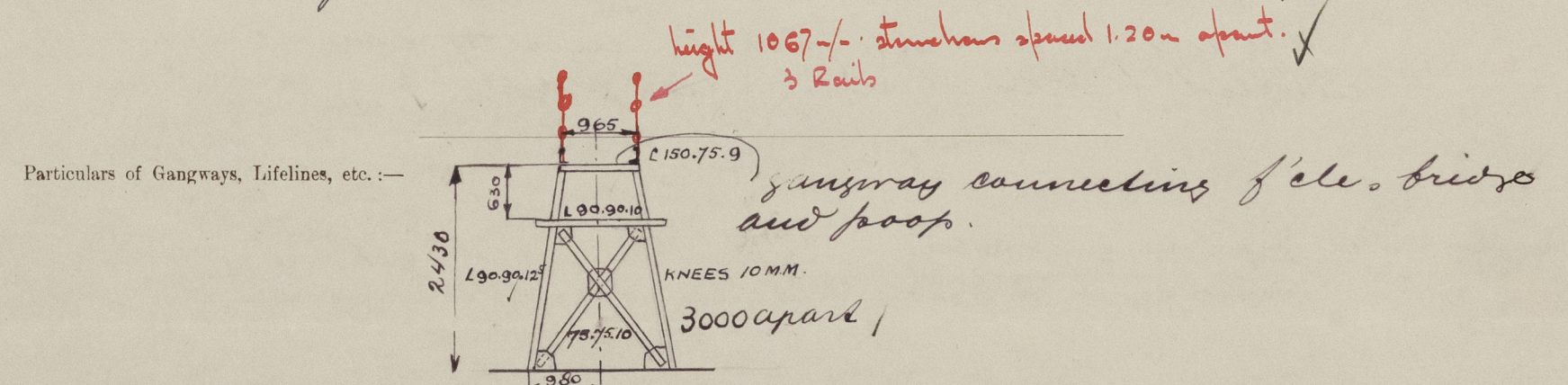
Scuppers in wells: strong steel bends through ships sides
Sanitary discharges from spaces on bridge deck and poop deck: automatic non return valves
Sanitary discharges from poop space: 2 automatic non return valves; one fitted to shell
Castings enclosing the valves of gunmetal

Particulars of Side Scuttles:—

of substantial construction; bronze frame; fitted with efficient hinged deadlights of bronze where situated below freeboard deck and of cast iron in way of superstructures.

Vertical distance of Sill of lowest Side Scuttle above top of keel 10150

Particulars of Guard Rails:— On fore deck, wells and after part of poop deck height 1100; 3 rails, stanchions 1300 apart



Particulars of Gangways, Lifelines, etc.:—

Particulars of Freeing Arrangements.

	Length of Bulwark	Height of Bulwark	Size of Freeing Ports	Number each side	Area each side	Rule area each side
After Well ...						
Forward Well ...						

State position of each freeing port ... After Well:—
(F. and A. position and height above deck edge) Forward Well:—

sheer stake edge above deck edge 300

State whether the freeing ports are fitted with shutters, bars, or rails, and give particulars of such:—

Additional area where sheer is less than standard.

PARTICULARS OF PROTECTION TO OPENINGS, ETC.

HATCHWAYS ON FREEBOARD AND SUPERSTRUCTURE DECKS.									
Description of Hatchway	over dry cargo hold		over cargo tanks			
Dimensions of Hatchway	6200 x 4180 ✓		915 0 x 675			
COAMINGS	{	Height above Deck	...	460 X		915			
		Thickness	Sides	"		10			
		Stiffeners	Ends	"		10			
		Brackets, Stays	...	2 180. 90. 11		-			
HATCH BEAMS	{	Number	...						
		Spacing	...						
		Scantling and Sketch	...	none		none			
		Bearing Surface	...						
FORE AND AFTERS	{	Number	...						
		Spacing	...						
		Unsupported Lengths	...	none		none			
		Scantling* and Sketch	...						
HATCH COVERS	{	Material	...	steel *		steel			
		Thickness	...	12 1/2		12 1/2			
		How fitted	...	hinged		hinged			
		Bearing Surface	...						
Spacing of Cleats	407 (lashed)		365 (lashed)			
Number of Tarpaulins						
<p>*Are wood fore and afters steel shod at all bearing surfaces? * Stiffened by 4 130.50.12</p> <p>Are battens and wedges efficient and in good condition? 3 bars longitudinal ✓</p> <p>Are tarpaulins in good condition and in accordance with rule requirements? 9 " transverse</p> <p>Are lashings provided in accordance with rule requirements?</p>									

Particulars of any special features:—

Small hatchways

marked	opening	coaming	cover
d	1000 x 1000	230 x 10	Steel hinged m. & l. ✓
e	470 x 600	230 x 10	
f	800 x 520	230 x 9	
g	1000 x 1000	610 x 10	

Closed with lashing.

skylight over pumproom efficiently constructed and fitted with hinged steel flaps. ✓

Endorsement at first survey and at surveys for renewal of Certificate:—

The fittings and appliances are in accordance with the particulars shown on this form (or as now modified) and are in good condition.



© 2021

Lloyd's Register
Foundation