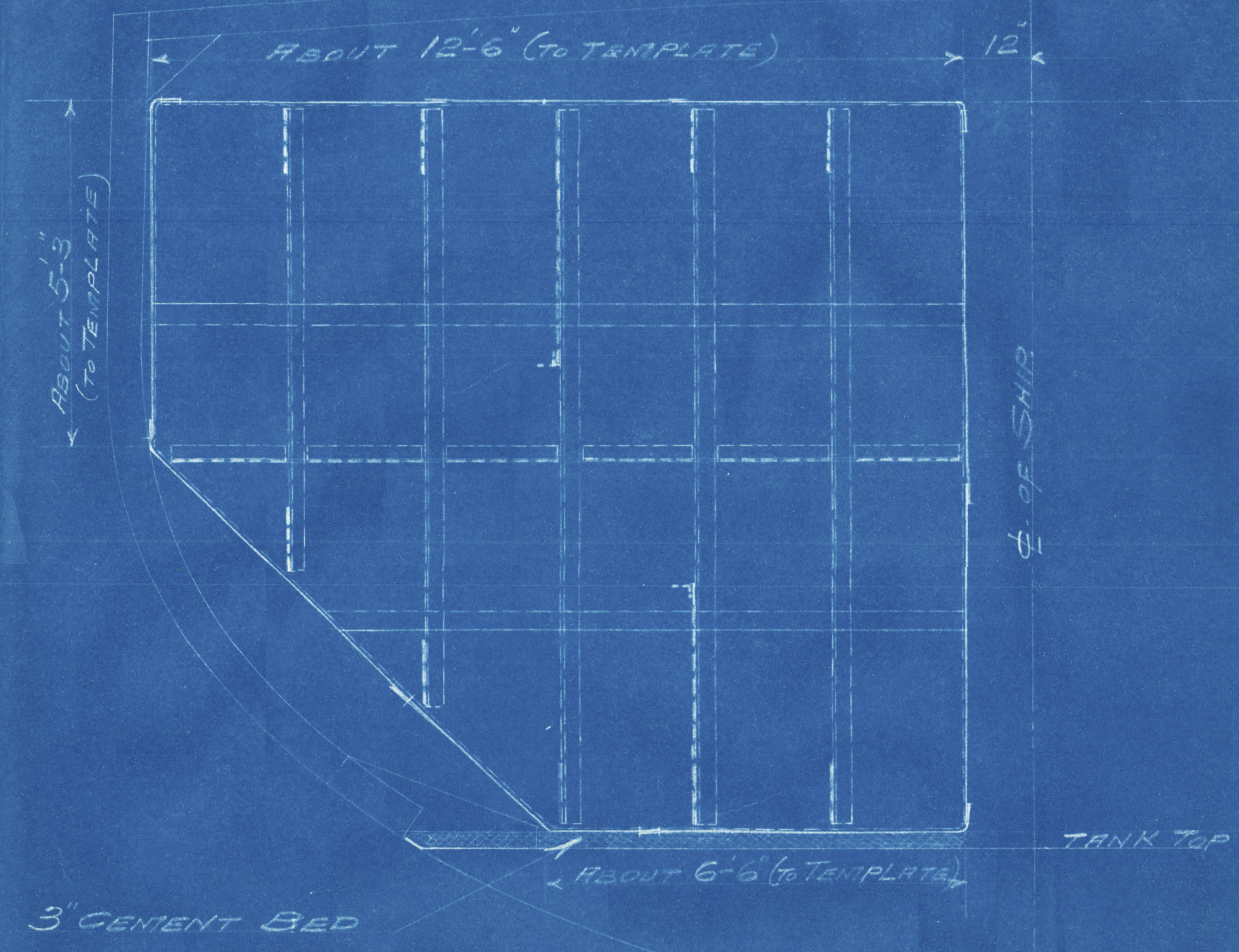


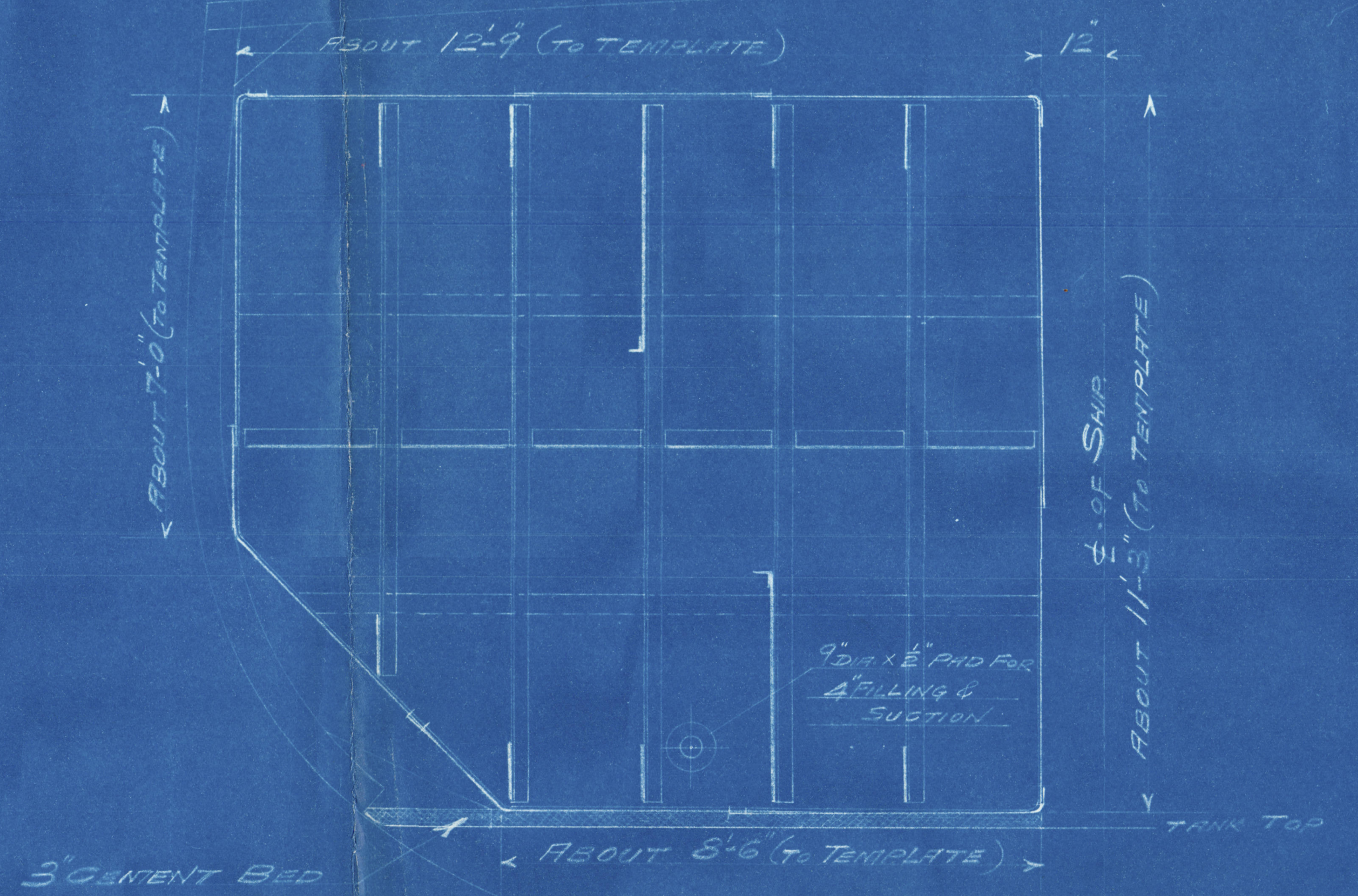
SECTION C.C.
Looking Forward



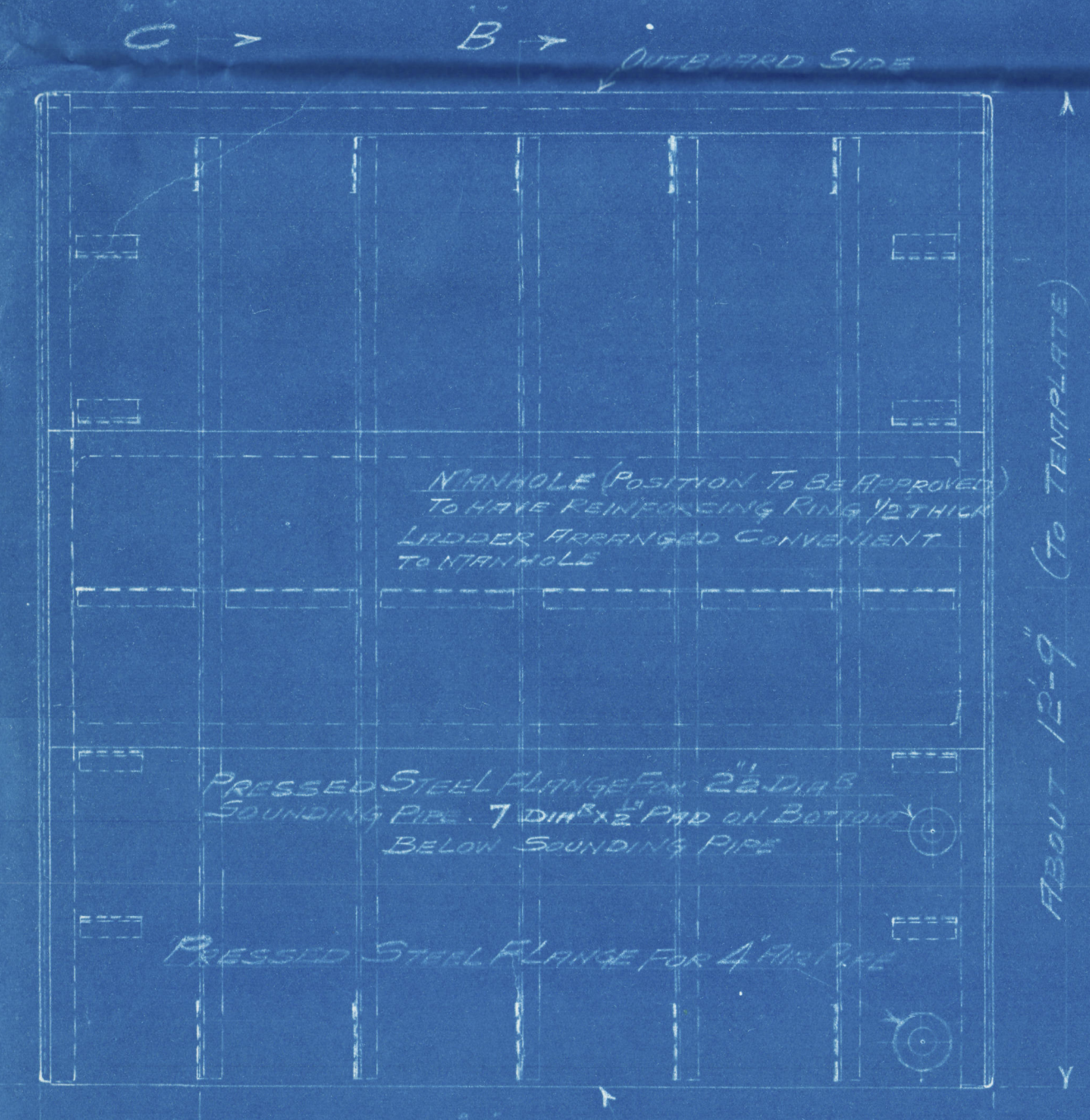
FR. 27
OUTSIDE VIEW OF AFTER END
Looking Forward



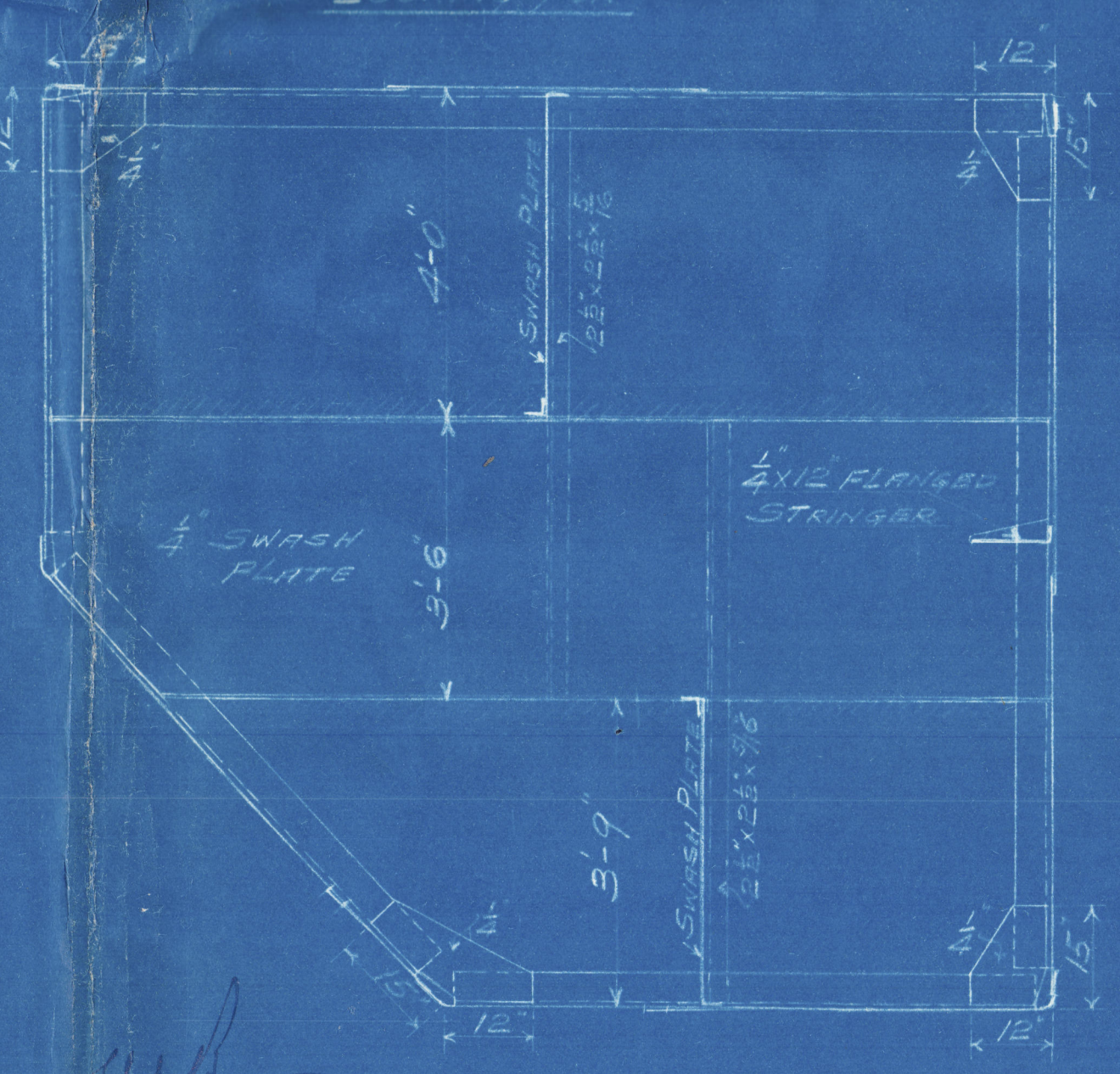
INBOARD SIDE
Looking Forward



FR. 34
INSIDE VIEW OF FORWARD END
Looking Forward



PLAN VIEW OF TOP



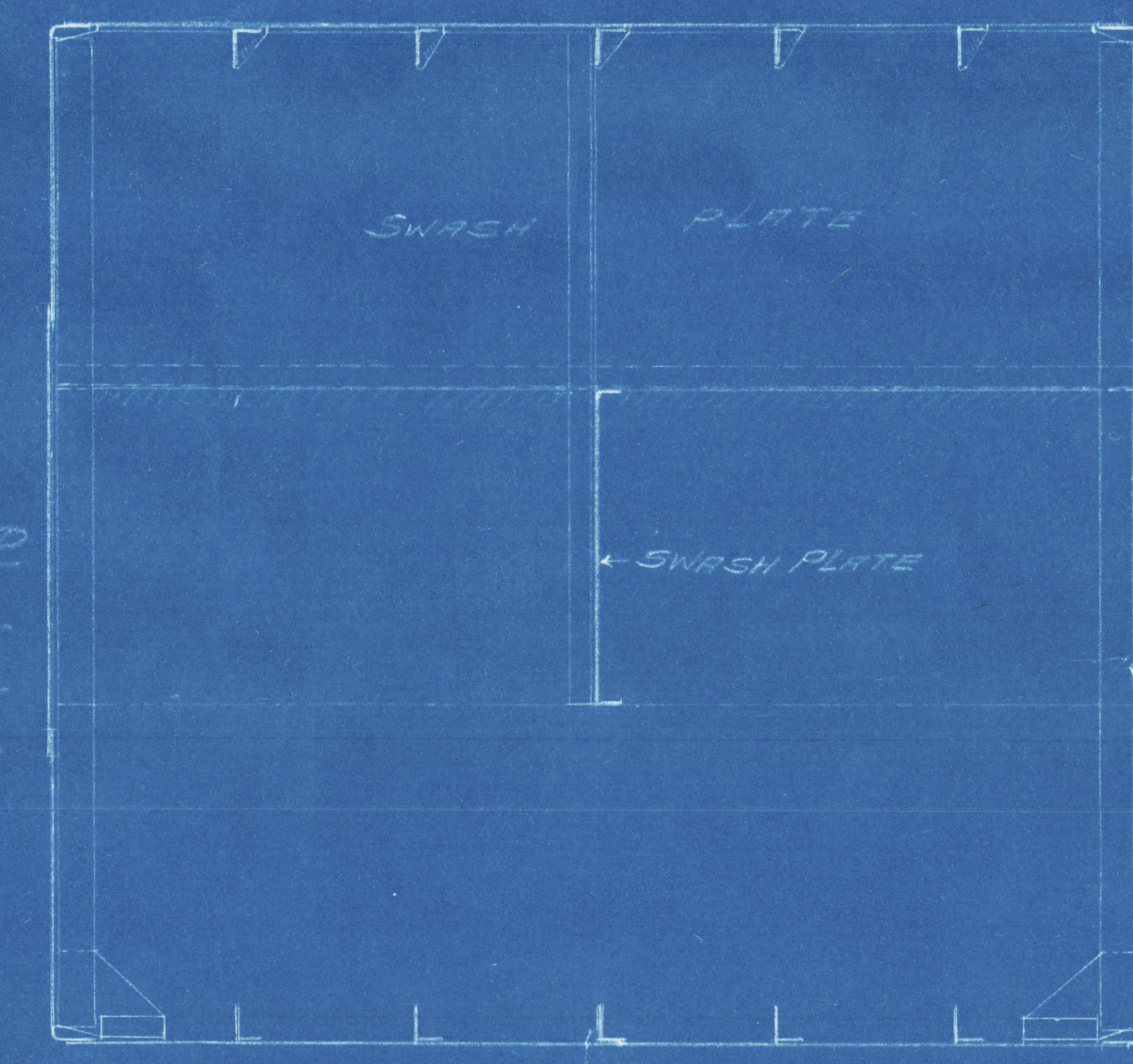
SECTION B.B.
Looking Forward

MATERIAL

BOTTOM PLATES ENDS & LOWER COURSES 3/4 x 3/4
TOP PLATES & UPPER COURSES 3/4 x 3/4
SWASH PLATES & BRACKETS 25
STIFFENERS TO SHELL 5 x 3 1/2 2-0 APART
INTERIOR STIFFENERS & BRACES 2 1/2 x 2 1/2

RIVETING

ALL SHELL LAPS & SEAMS 3/8 WIDE DOUBLE RIVETED
ALL RIVETS 5/8 DIAMETER
SHELL RIVETS COUNTERSUNK ON OUTSIDE
RIVETS IN LAPS & SEAMS 2 1/4 & TO &
RIVETS IN STIFFENERS 3 1/4 & TO &



SECTION A.A.
Looking Outboard

ONE TANK AS SHOWN FOR PORT SIDE
ONE TANK TO OPPOSITE HAND FOR STARBOARD SIDE

APPROVED
JUN 22 1926
LLOYD'S REGISTER OF SHIPPING
NEW YORK

The class of the Oil Fuel
to be carried should be not lower
than 150° F. and the requirements
of Section 35 of the Rules should
be complied with.

S.S. ST FAITH
CROSS BUNKER OIL FUEL TANKS
SCALE 1/2" = ONE FOOT
YARROWS LIMITED ENGINEERS
SHEATH 1436
4.6.26

GORE'S
ELECTRIC BLUE PRINT CO.
DRAWING MATERIALS, MEASURING TAPES,
SURVEYING INSTRUMENTS, ETC.
214 CENTRAL BLDG. 620 VIEW STREET
VICTORIA, B.C.

GORE'S
ELECTRIC BLUE PRINT CO.
DRAWING MATERIALS, MEASURING TAPES,
SURVEYING INSTRUMENTS, ETC.
214 CENTRAL BLDG. 620 VIEW STREET
VICTORIA, B.C.

Lloyd's Register
Foundation

009780-009788-0167

ABOUT 12-6 (TO TEMPLATE)

1436-7-2-7-40