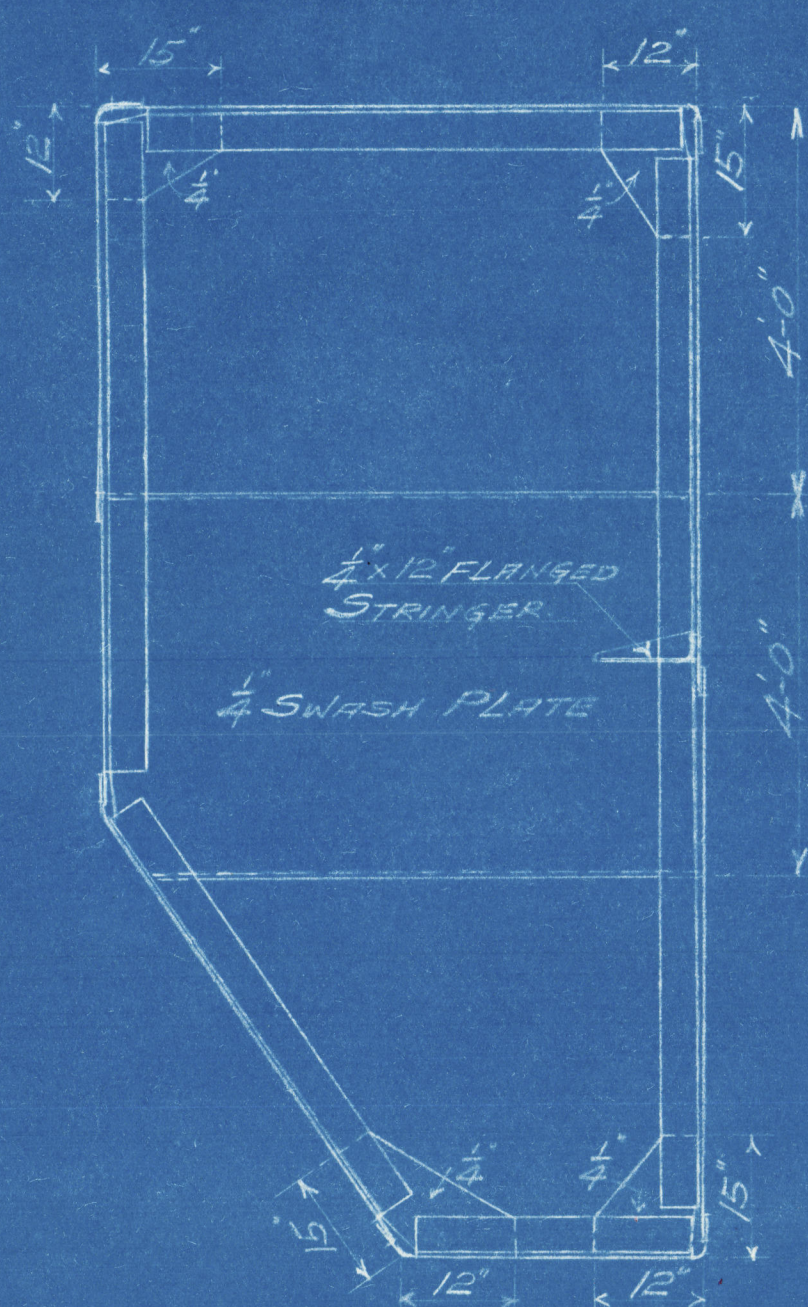
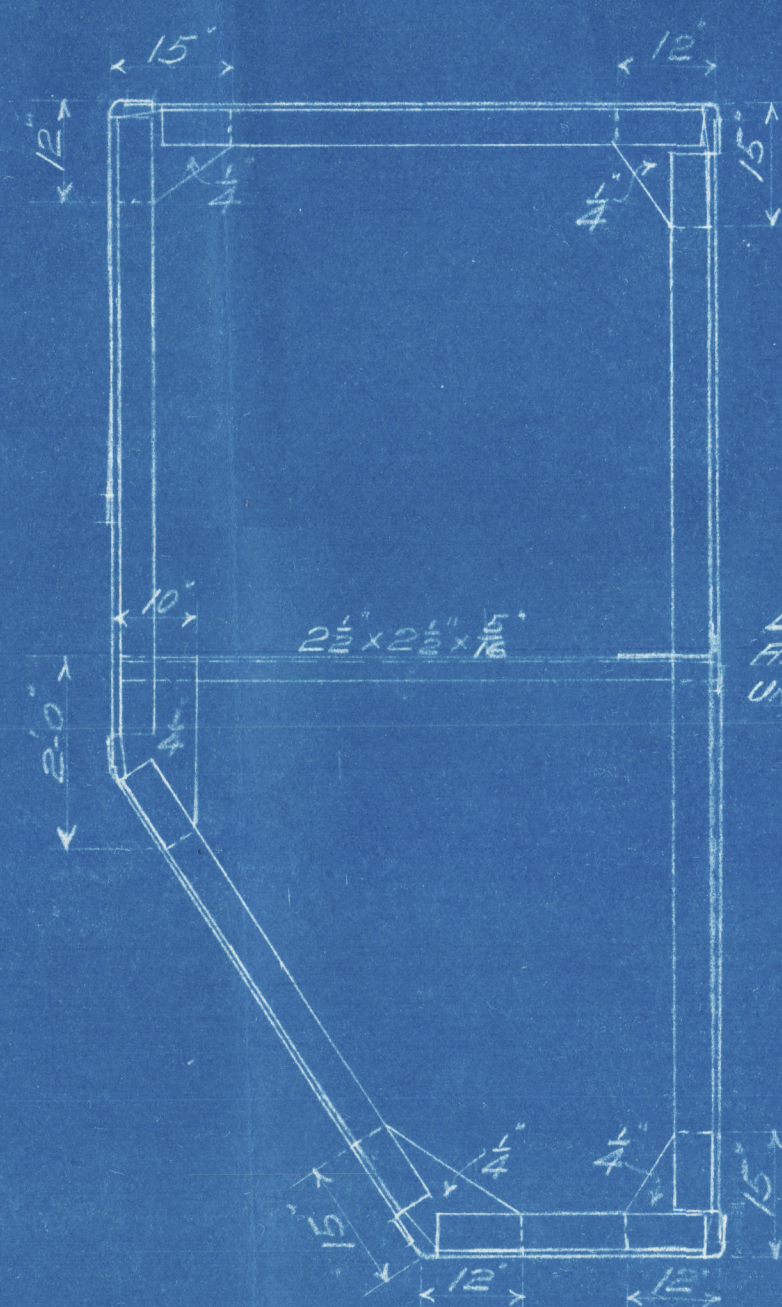


FR. 45 BASE LINE

OUTSIDE VIEW OF FORWARD END
LOOKING AFT

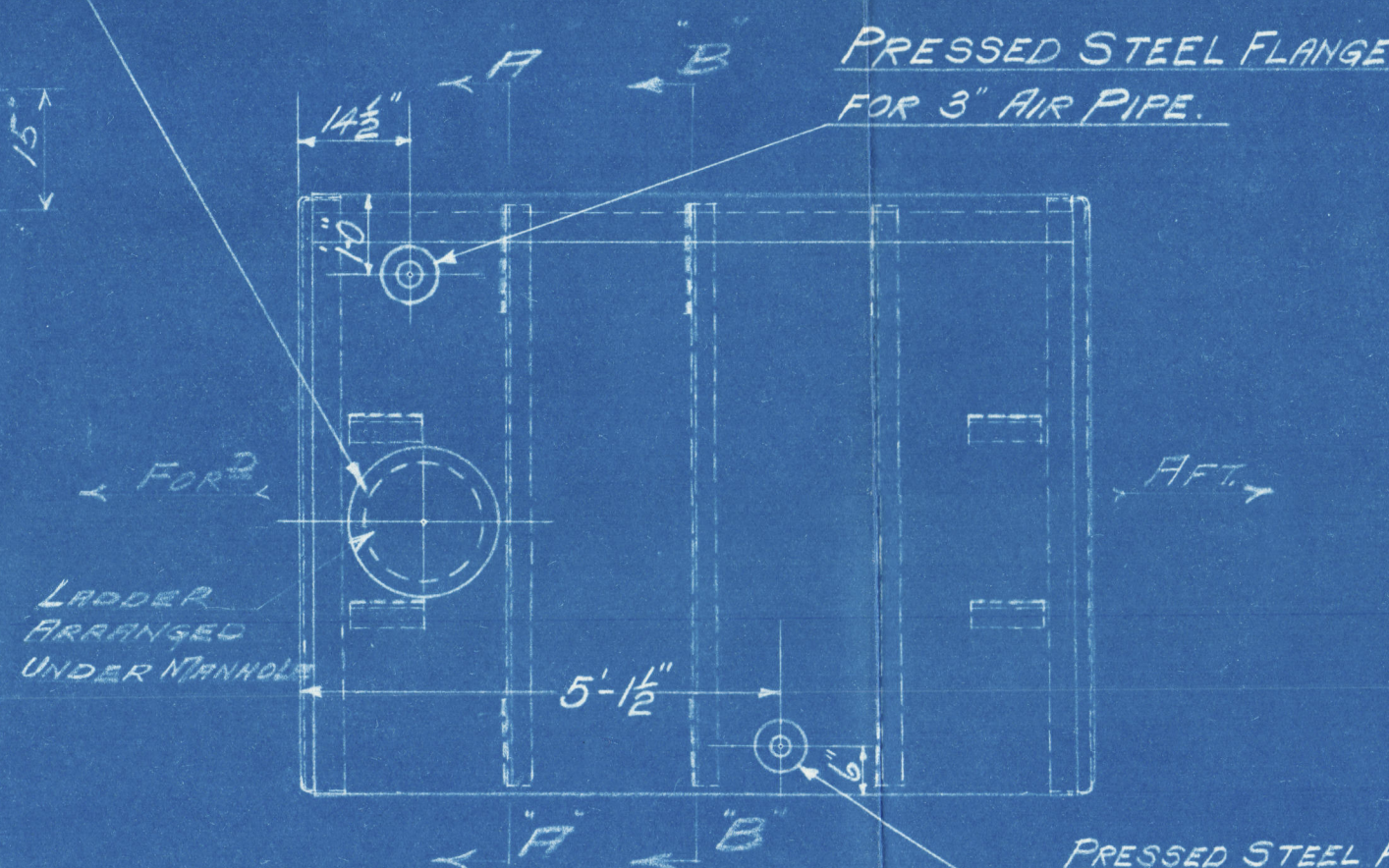


SECTION B.B



SECTION A.A

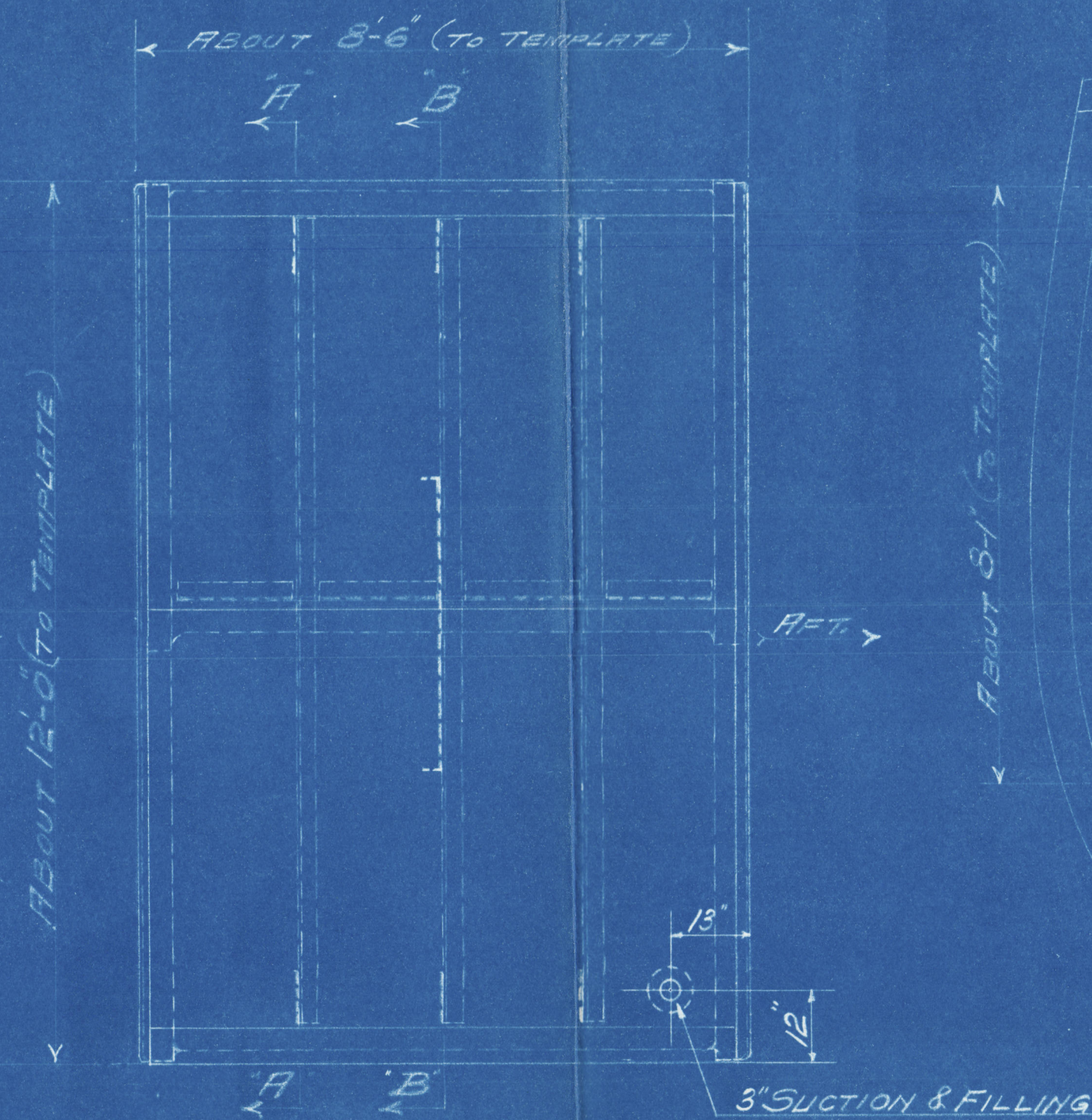
MANHOLE 15" DIA.
MANHOLE COVER 19" DIA.
- 5/8" x 1 1/4" CAP SCREWS
ON 17" DIA. PITCH CIRCLE.



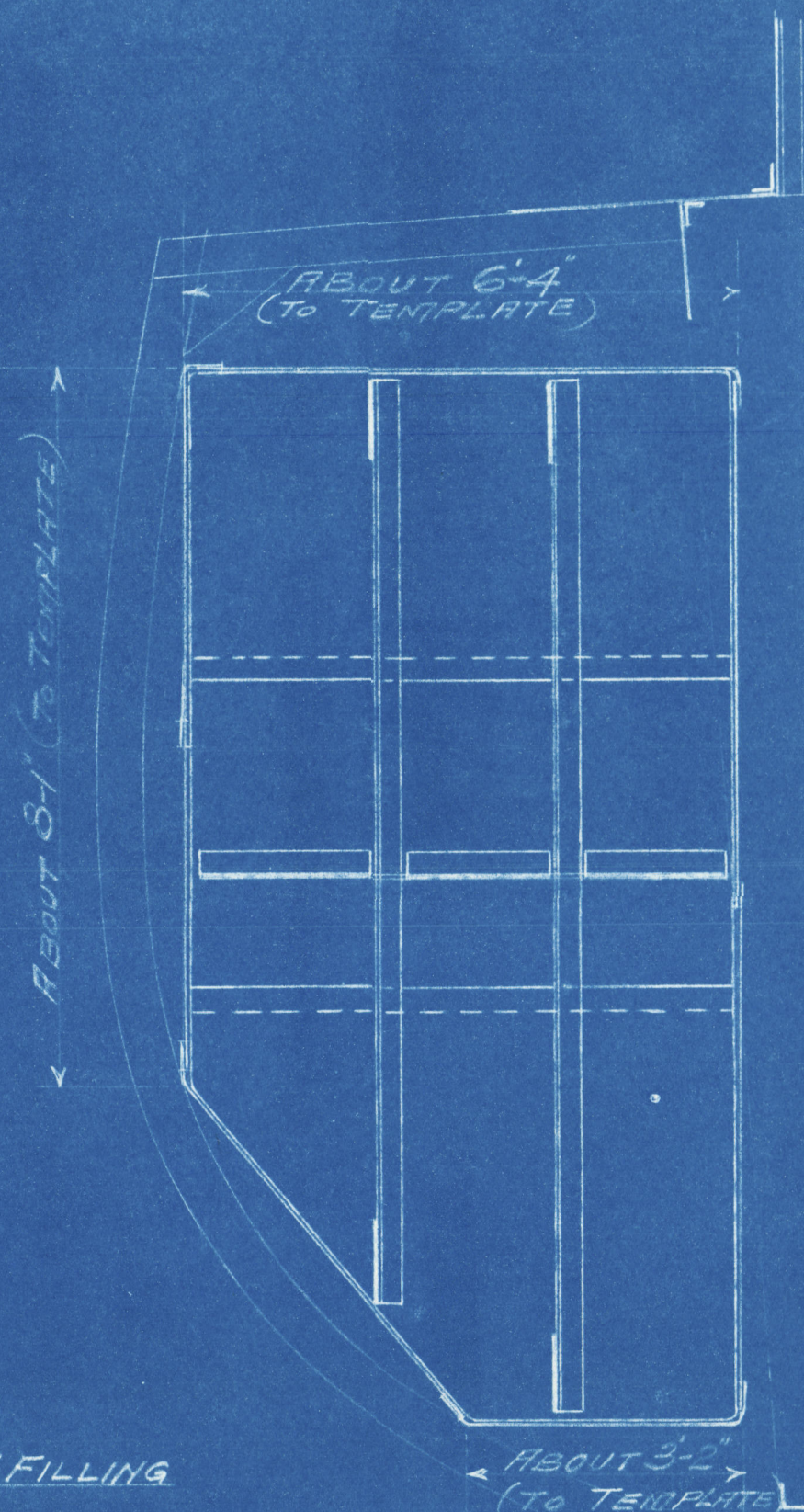
PLAN VIEW OF TOP

ONE TANK AS SHOWN FOR STAR^D SIDE

STAR^{ED} NO. 4 WING BUNKER OIL FUEL TANK IS SIMILAR
TO ABOVE TANK EXCEPT THAT DIMENSION
MARKED * IS 8'-1"



INBOARD SIDE
LOOKING FROM C. OF SHIP



FR. 40 BASE LINE

INSIDE VIEW OF AFTER END
LOOKING AFT

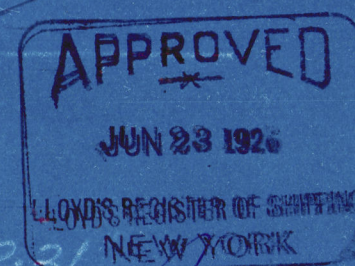
RIVETING 3 1/4"

ALL SHELL LAPS AND SEAMS 3 1/4" WIDE DOUBLE RIVETED
ALL RIVETS 5/8" DIA. SHELL RIVETS COUNTERSUNK ON OUTSIDE
RIVETS IN LAPS AND SEAMS 2 1/4" C. TO C.
RIVETS IN STIFFENERS 3 3/4" C. TO C. ✓

MATERIAL

BOTTOM PLATES ENDS & LOWER COURSES 3/4" & 3/4"
TOP PLATES & UPPER COURSES 3/4" & 28"
SWASH PLATES & BRACKETS .25"
STIFFENERS TO SHELL PLATES 5' x 3' x 3/8" 2'-0" APART
INTERIOR STIFFENERS & BRACES 2 1/2" x 2 1/2" x 5/16"

The Peak Point of the Oil Fuel
to be carried should be not lower
than 15' 6" T. and the requirements
of Section 15 of the Rules should
be complied with.

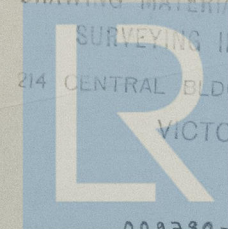


SS. S. FAITH
STAR^{ED} NO. 3 WING BUNKER OIL FUEL TANK

SCALE 1/2" = ONE FOOT
YARROWS LTD ESQUIMAULT B.C.
SKETCH #1440
7.6.26.

GORE'S
ELECTRIC BLUE PRINT CO.
DRAWING MATERIALS, MEASURING TAPES,
SURVEYING INSTRUMENTS, ETC.
214 CENTRAL BLDG. 620 VIEW STREET
VICTORIA, B. C.

GORE'S
ELECTRIC BLUE PRINT CO.
DRAWING MATERIALS, MEASURING TAPES,
SURVEYING INSTRUMENTS, ETC.
214 CENTRAL BLDG. 620 VIEW STREET
VICTORIA, B. C.



009780-009788-0166

Lloyd's Register
Foundation