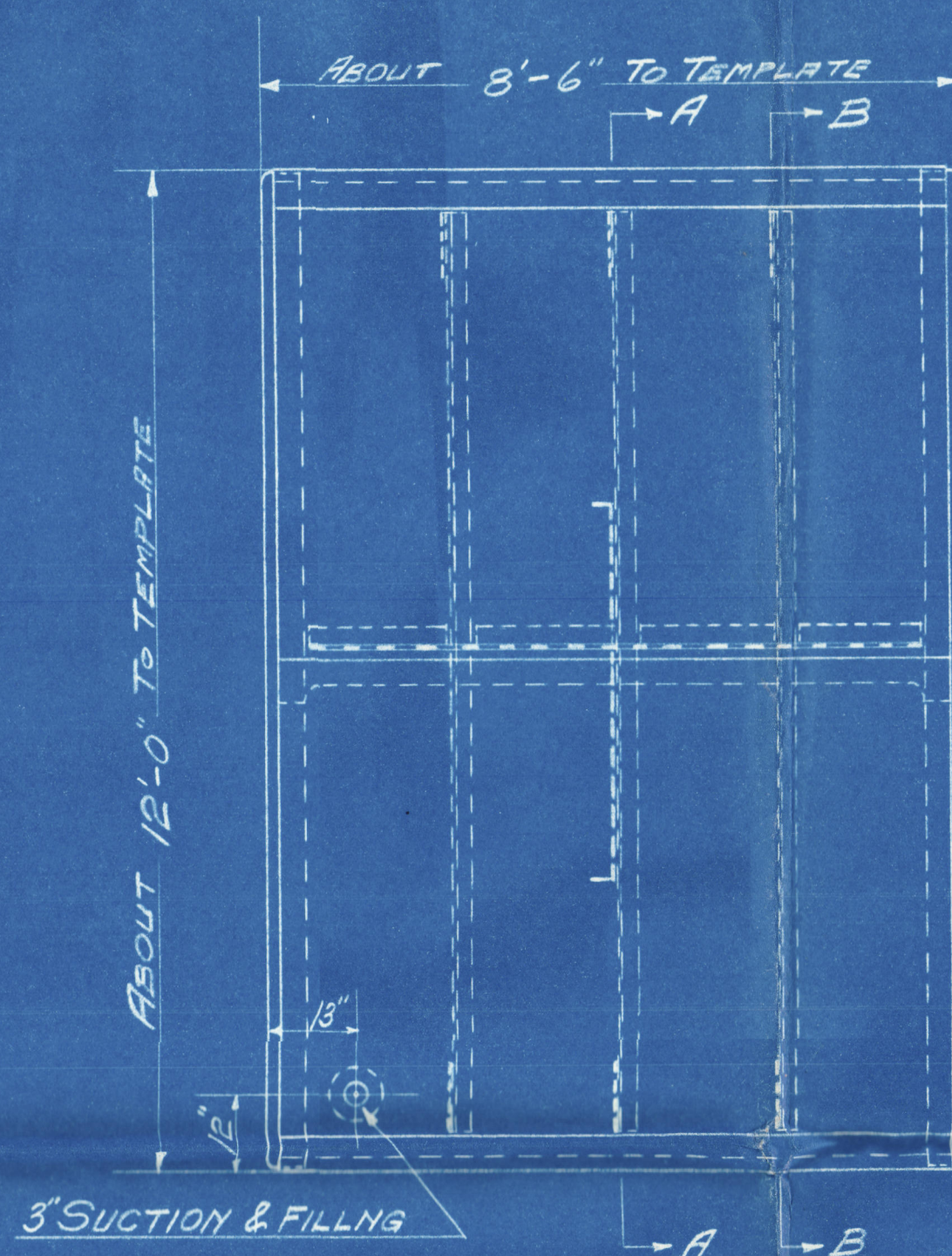


FR 40

BASE LINE

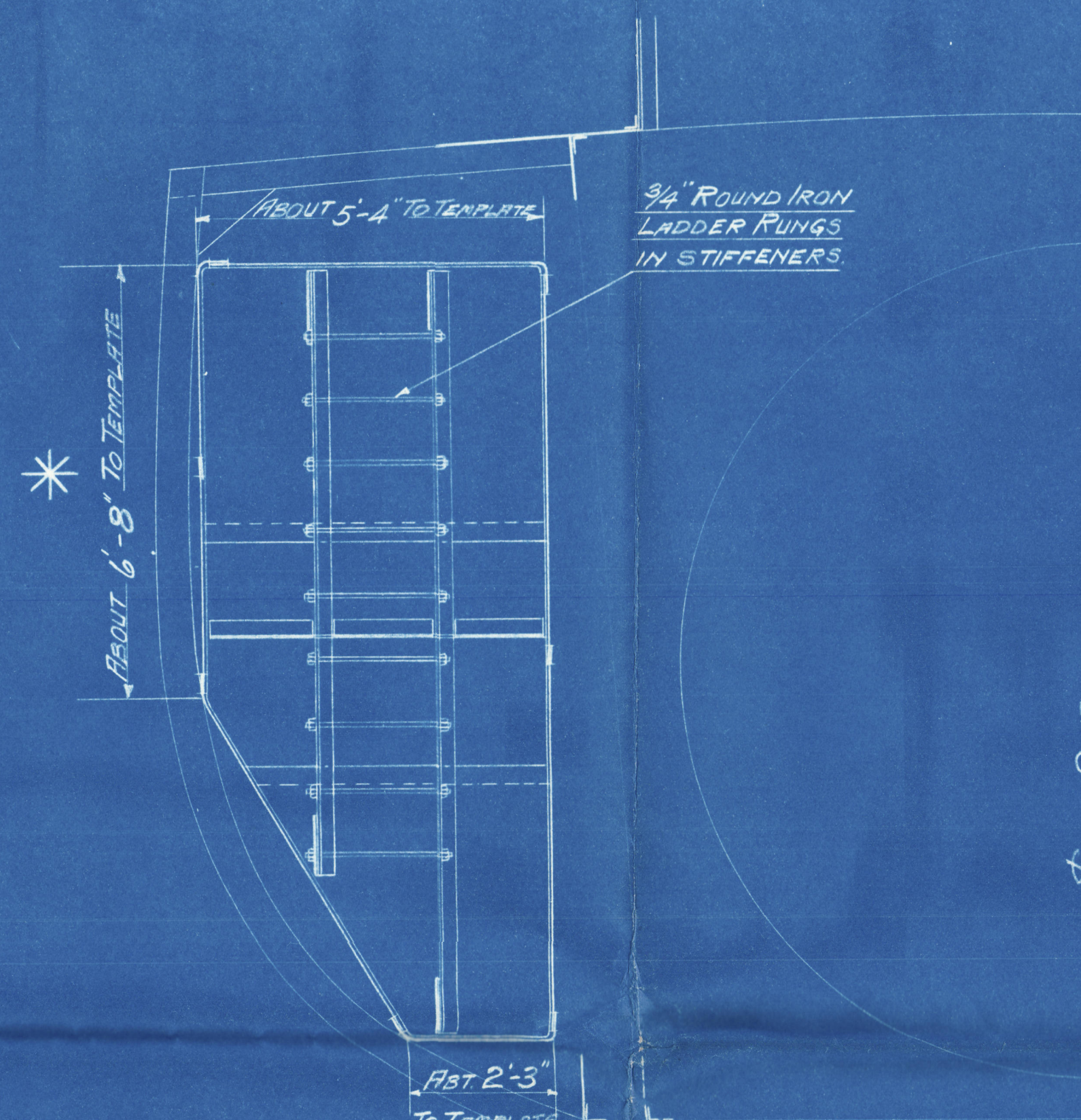
# OUTSIDE VIEW OF AFTER END

LOOKING FOR<sup>d</sup>



# INBOARD SIDE

LOOKING FROM CL OF SHIP

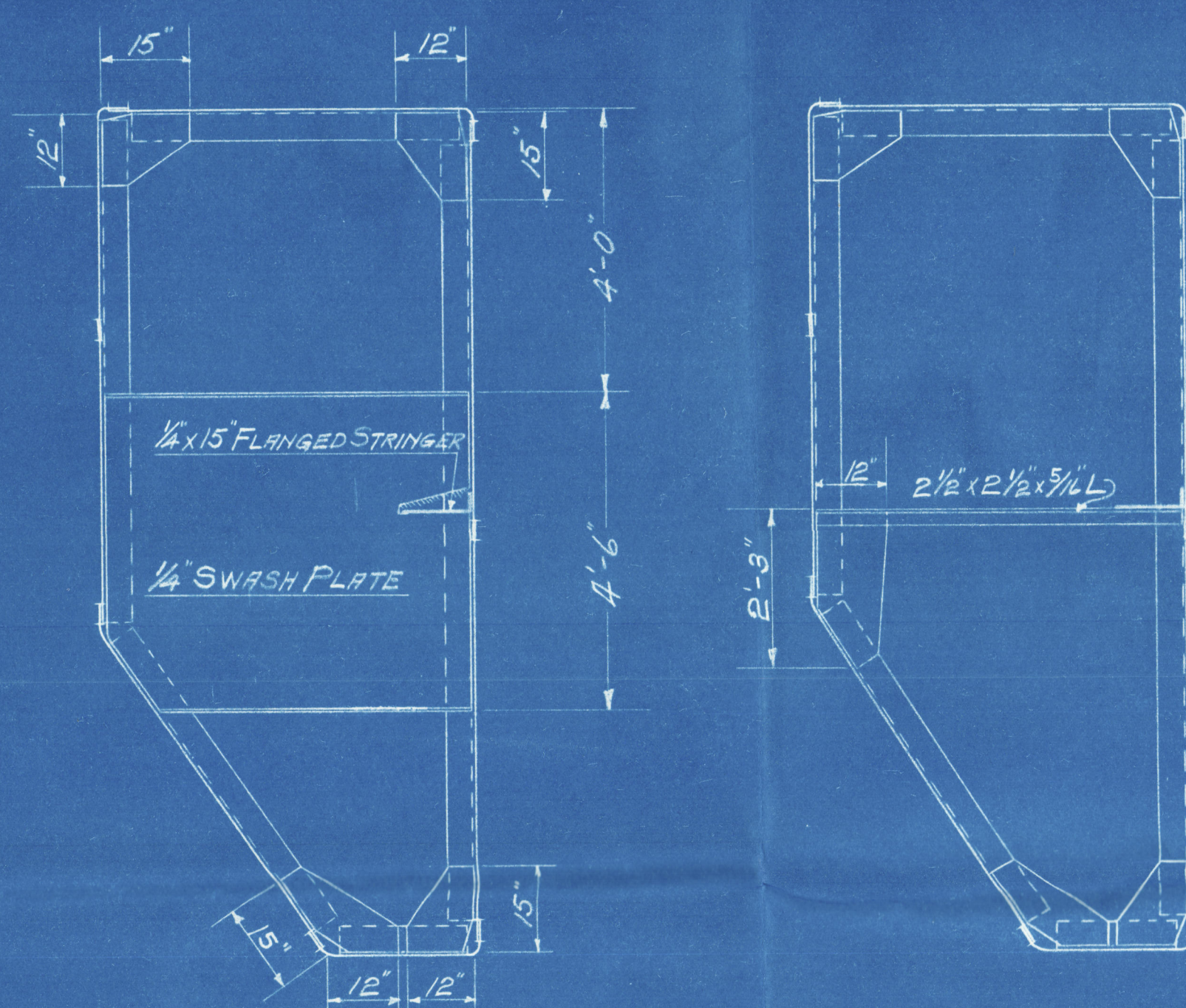


FR 45

BASE LINE

# INSIDE VIEW OF FOR<sup>d</sup> END

LOOKING FOR<sup>d</sup>

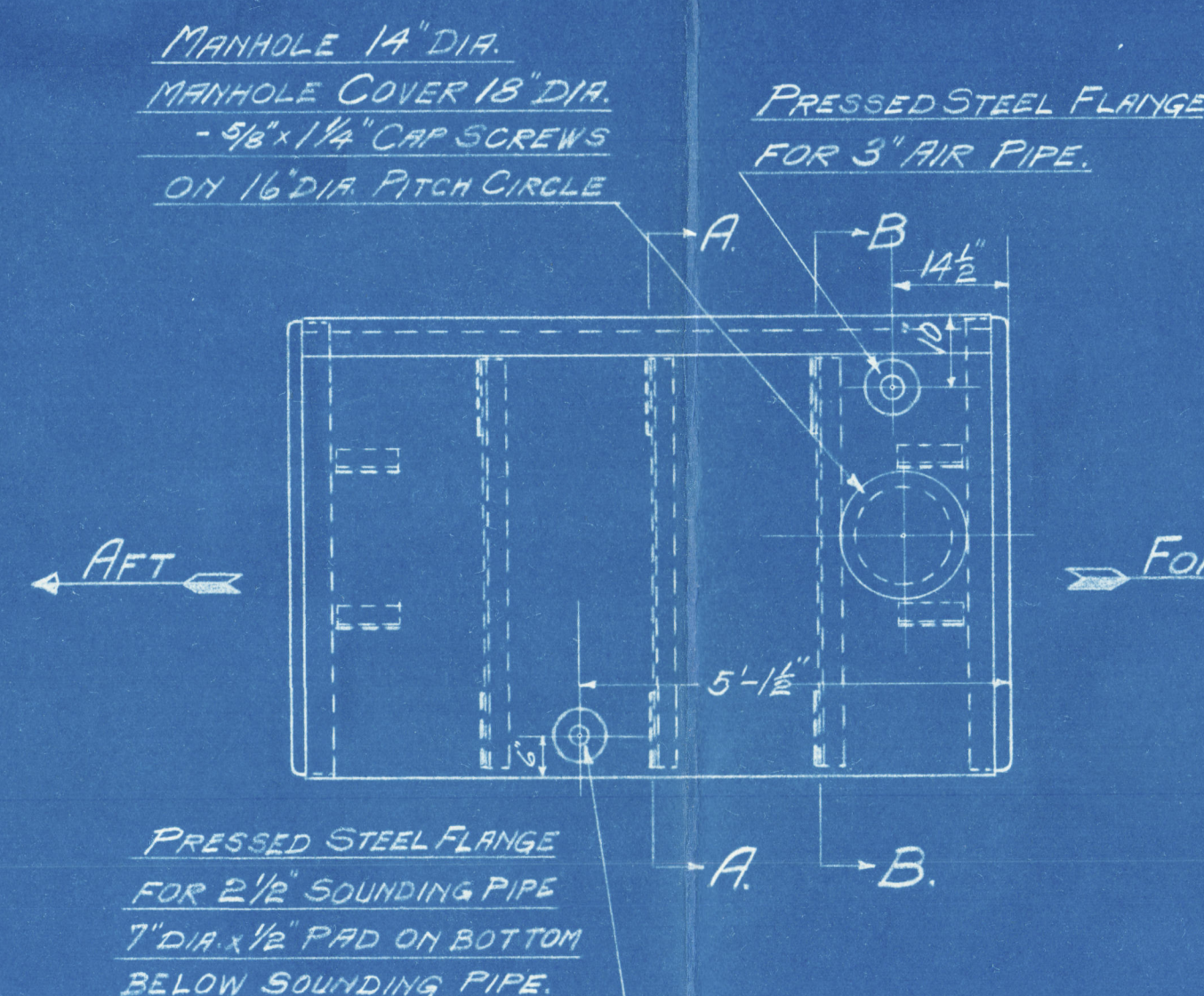


# SECTION A.A.

LOOKING FOR<sup>d</sup>

# SECTION B.B.

LOOKING FOR<sup>d</sup>



# PLAN VIEW OF TOP

# ONE TANK AS SHOWN FOR PORT SIDE

PORT NO 4 WING BUNKER OIL FUEL TANK IS SIMILAR TO ABOVE TANK EXCEPT DIMENSION MARKED \* IS 8'-1 1/2"

# RIVETING

ALL SHELL LAPS AND SEAMS 3 3/8" WIDE DOUBLE RIVETED  
ALL RIVETS 5/8" DIA. SHELL RIVETS COUNTERSUNK ON OUTSIDE  
RIVETS IN LAPS AND SEAMS 2 1/4" CL TO CL  
RIVETS IN STIFFENERS 3 3/4" CL TO CL

# MATERIAL

BOTTOM PLATES, ENDS & LOWER COURSES 3/4" & 3/4"  
TOP PLATES & UPPER COURSES 3/4" & 28"  
SWASH PLATES & BRACKETS 25"  
STIFFENERS TO SHELL PLATES 5" x 3" x 3/8". 2'-0" APART.  
INTERIOR STIFFENERS & BRACES 2 1/2" x 2 1/2" x 5/16"



The Peak Point of the Oil Fuel to be carried should be not lower than 150° F. and the requirements of Section 35 of the Rules should be complied with.

SS ST FAITH  
PORT NO 3 WING BUNKER OIL FUEL TANK

SCALE 1/2" = ONE FOOT  
YARROWS LTD ESQUIMAULT B.C.

SKETCH NO 439

10th JUNE 1926



GOE'S  
ELECTRIC BLUE PRINT CO.  
DRAWING MATERIALS, MEASURING TAPES,  
SURVEYING INSTRUMENTS, ETC.  
214 CENTRAL BLDG. 620 VIEW STREET  
VICTORIA, B. C.

GOE'S  
ELECTRIC BLUE PRINT CO.  
DRAWING MATERIALS, MEASURING TAPES,  
SURVEYING INSTRUMENTS, ETC.  
214 CENTRAL BLDG. 620 VIEW STREET  
VICTORIA, B. C.



© 2021

Lloyd's Register  
Foundation

009780-009785-0164