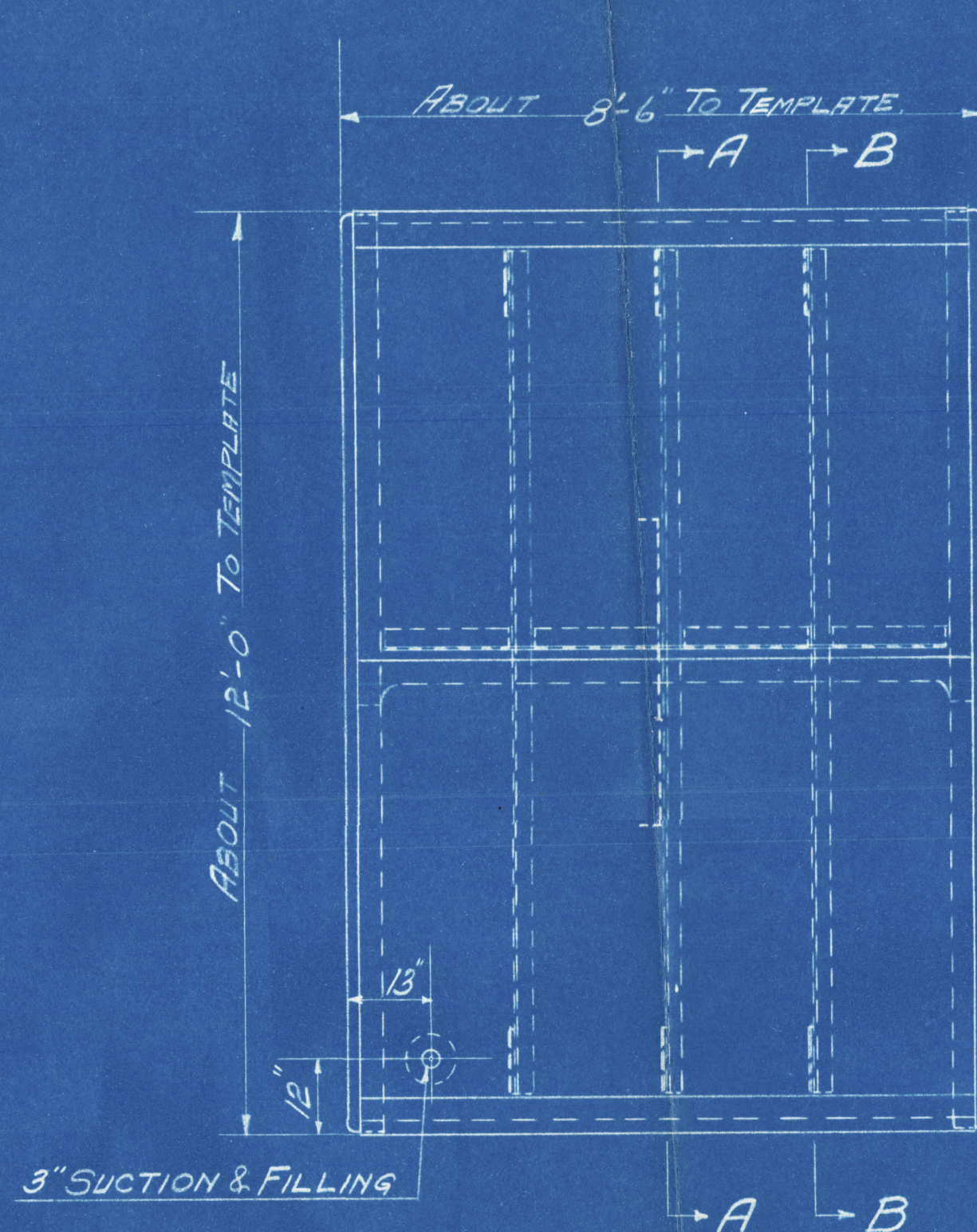
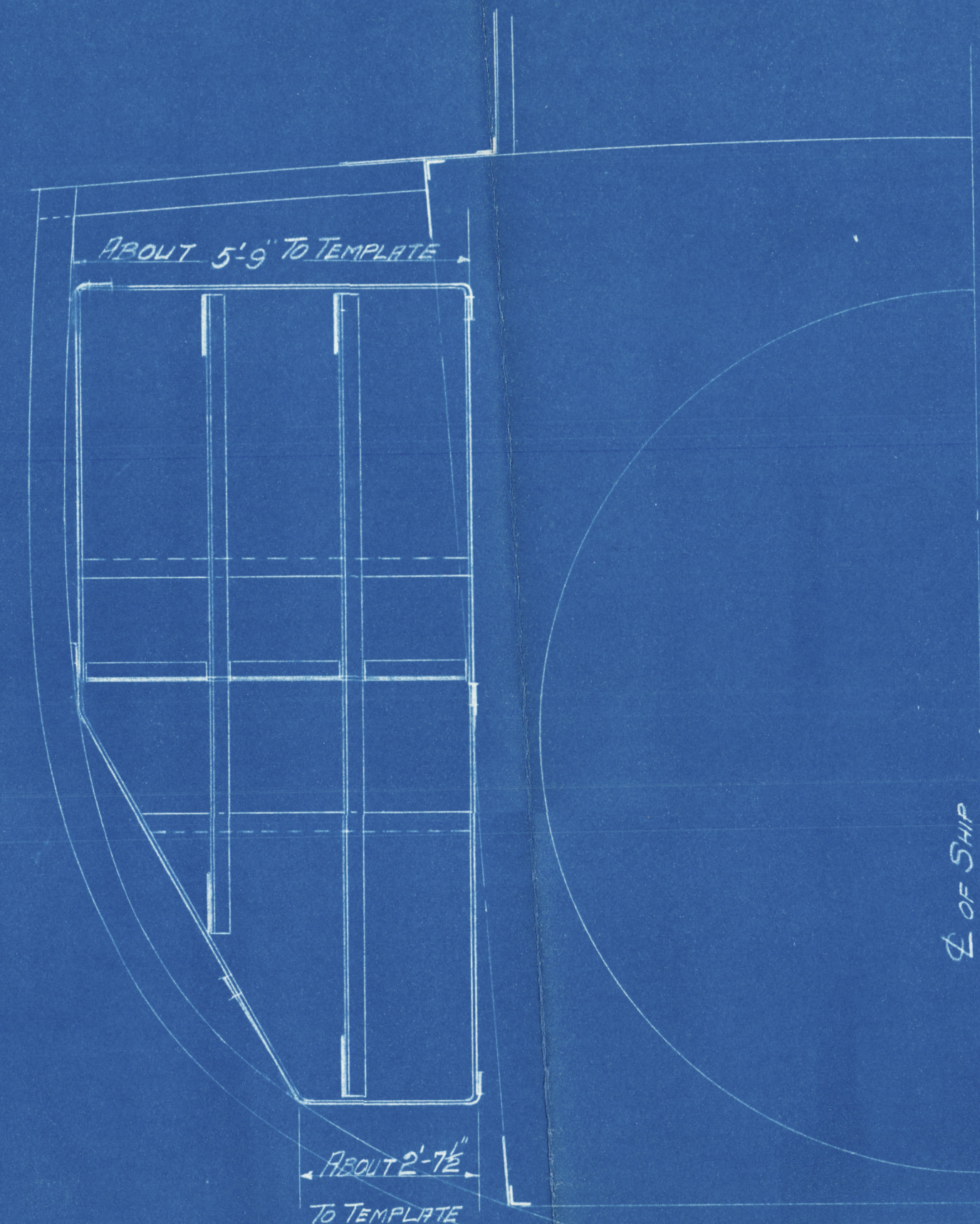


FR 45 BASE LINE

OUTSIDE VIEW OF AFTER END
LOOKING FOR^D

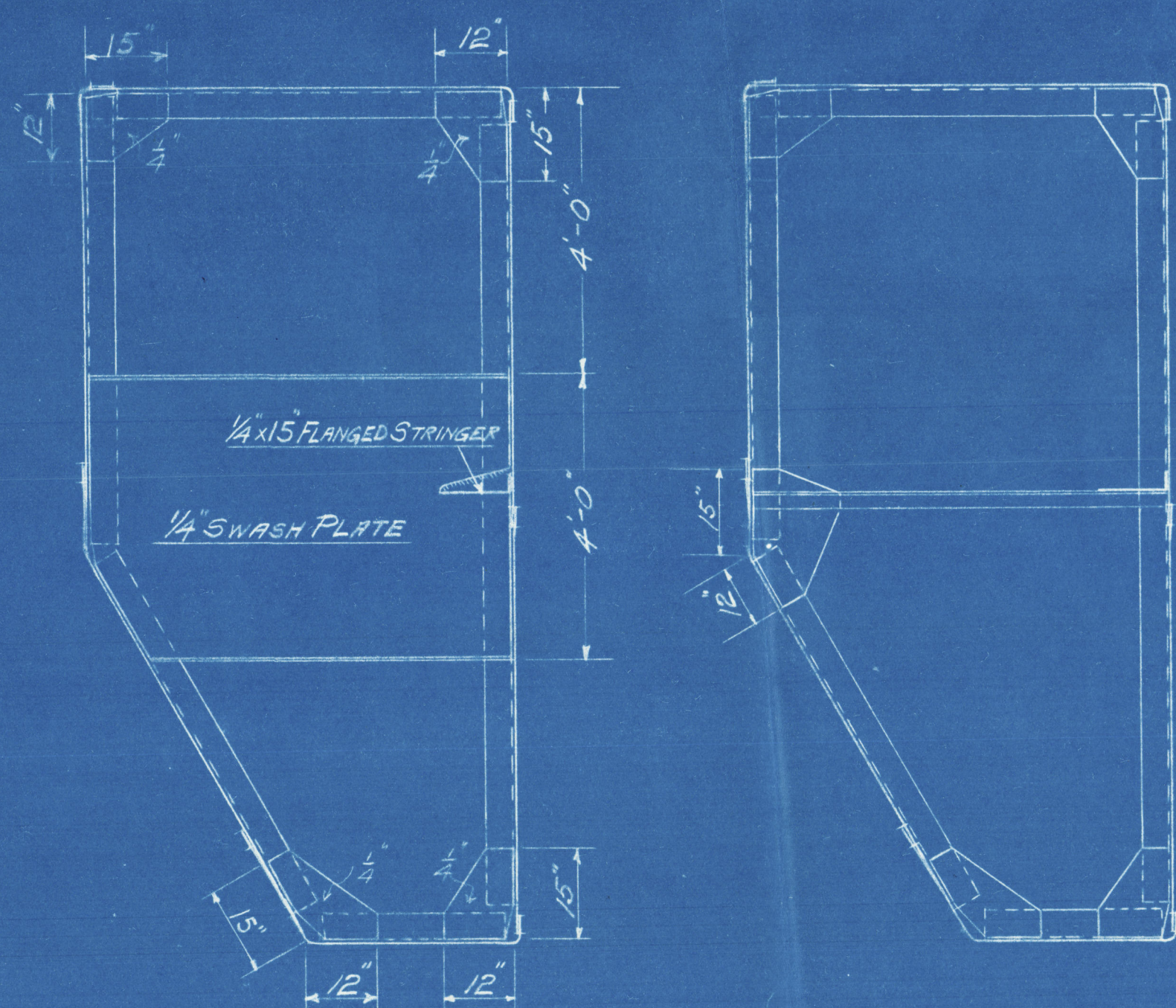


INBOARD SIDE
LOOKING FROM CL OF SHIP



FR 50 BASE LINE

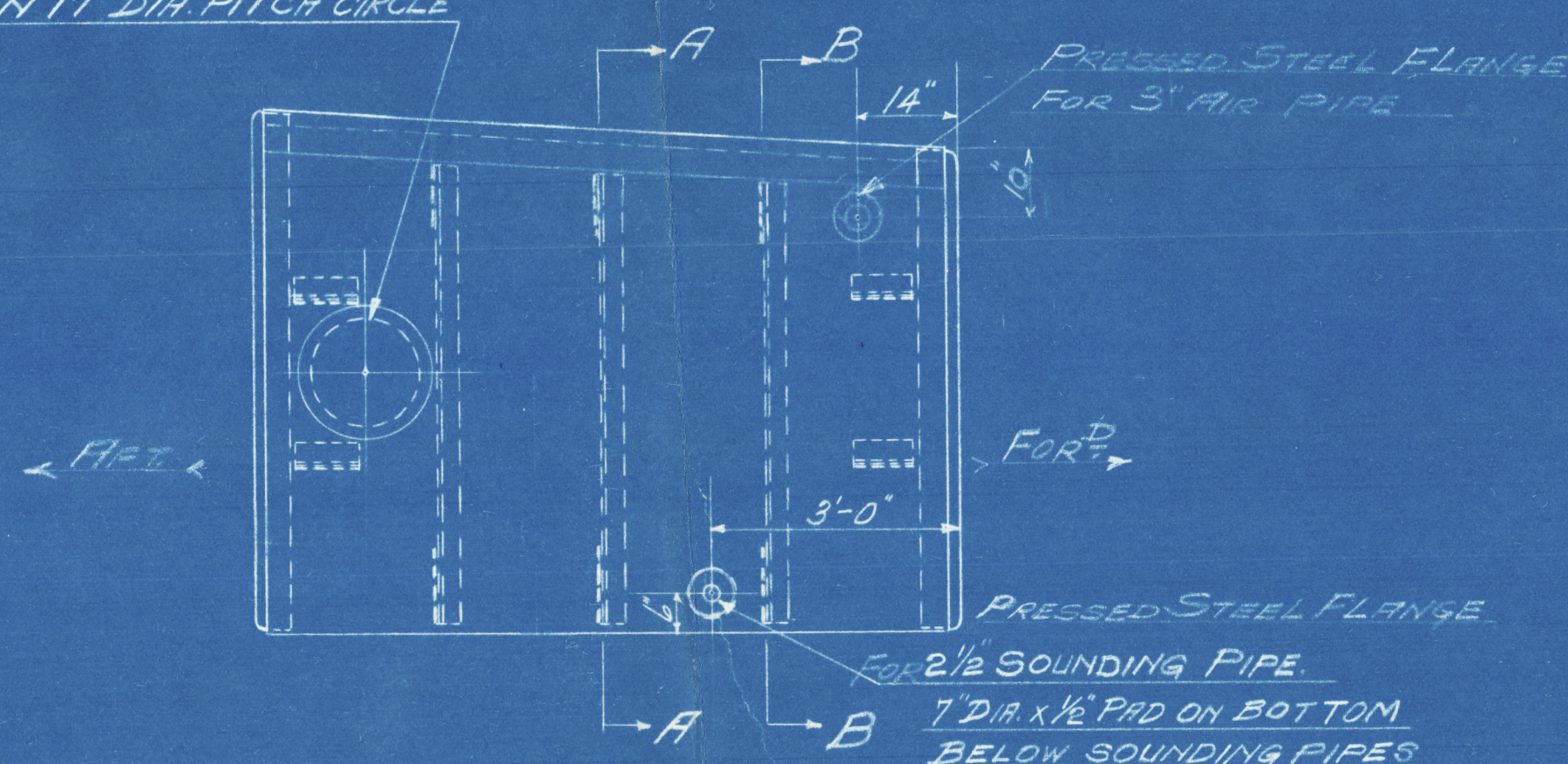
INSIDE VIEW OF FOR^D END
LOOKING FOR^D



SECTION A.A.

SECTION B.B.

MANHOLE 15" DIA.
MANHOLE COVER 19" DIA.
- 9/8" x 1 1/4" CAP SCREWS
ON 17" DIA PITCH CIRCLE



PLAN VIEW OF TOP

ONE TANK AS SHOWN FOR PORT SIDE.
ONE TANK TO OPPOSITE HAND FOR STARB^D SIDE.

RIVETING.

ALL SHELL LAPS AND SEAMS 3/8" WIDE DOUBLE RIVETED.
ALL RIVETS 5/8" DIA. SHELL RIVETS COUNTERSUNK ON OUTSIDE.
RIVETS IN LAPS AND SEAMS 2 1/4" CL TO CL.
RIVETS IN STIFFENERS 3 3/4" CL TO CL.

MATERIAL

BOTTOM PLATES, ENDS & LOWER COURSES '34" & '31"
TOP PLATES & UPPER COURSES '31" & '28"
SWASH PLATES & BRACKETS '25"
STIFFENERS TO SHELL PLATES 5" x 3" x 3/8" 2'-0" APART.
INTERIOR STIFFENERS & BRACES 2 1/2" x 1 1/2" x 5/16"

The High Point of the Oil Tank to be carried should be not lower than 15' F. and the requirements of Section 35 of the Rules should be complied with.

S.S. ST. FAITH
No 2 WING BUNKER OIL FUEL TANKS
SCALE 1/2" = ONE FOOT
YARROWS LTD ESQUIMALT B.C.

SKETCH No 438.
8th JUNE 1926.

CORE'S
ELECTRIC BLUE PRINT CO.
DRAWING MATERIALS, MEASURING TAPES,
SURVEYING INSTRUMENTS, ETC.
214 CENTRAL BLDG. 620 VIEW STREET
VICTORIA, B. C.

CORE'S
ELECTRIC BLUE PRINT CO.
DRAWING MATERIALS, MEASURING TAPES,
SURVEYING INSTRUMENTS, ETC.
214 CENTRAL BLDG. 620 VIEW STREET
VICTORIA, B. C.

009780-009788-0163

© 2021