

T.S. Passenger Steamer 220' x 28'-6" x 16'-3" U.O. mld.

Profile for Flooding Curves. B.O.T.

Scale 1/4" = 1 foot.



29/3/23

Subdivision Load Line draft is 8'-6" mld.

Length on Subdivision Load Line is 228.3 feet.

Depth mld. to Upper Deck is 16'-3"

Steel + Wood is +2.7

Less -3"

Depth mld to M.L. = 16'-2.7" = 16.2 feet.

Sheer forward = 3.8 feet

" aft = .6 feet.

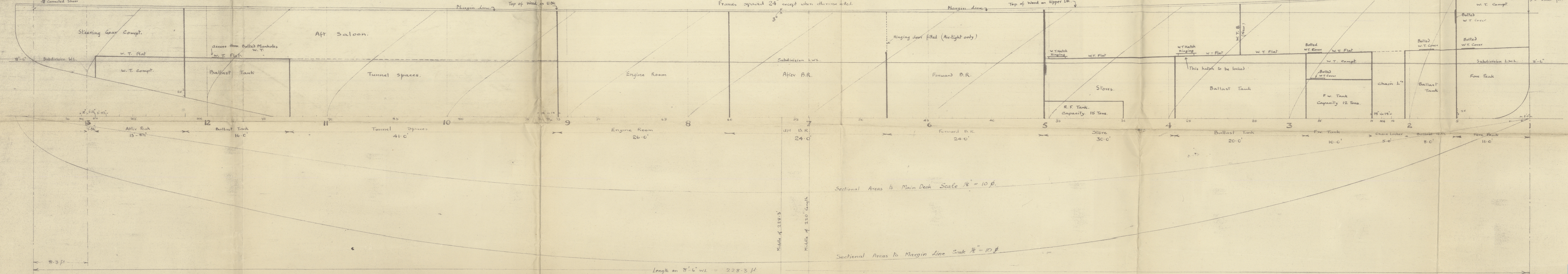
Subdivision L.W.L. = 8'-6" Depth = 930

$$C_B = \frac{930 \times 35}{228.3 \times 28.5 \times 8.5} = .588$$

Section interval = 320 ft.

Sectional Area Curves Scale 1/8" = 10 ft.

Frames spaced 24" except where otherwise noted.



Sectional Areas to Main Deck Scale 1/8" = 10 ft.

Sectional Areas to Margin Line Scale 1/8" = 10 ft.

Length on 8'-6" W.L. = 228.3 ft.