

No. 115.

EX. ADMIRALTY T.S.M.S. TOWN CLASS ("WEXFORD")

CONVERTED TO T.S. PASSENGER STEAMER.

ARRANGEMENT OF STEELWORK OF PROMENADE DECK.

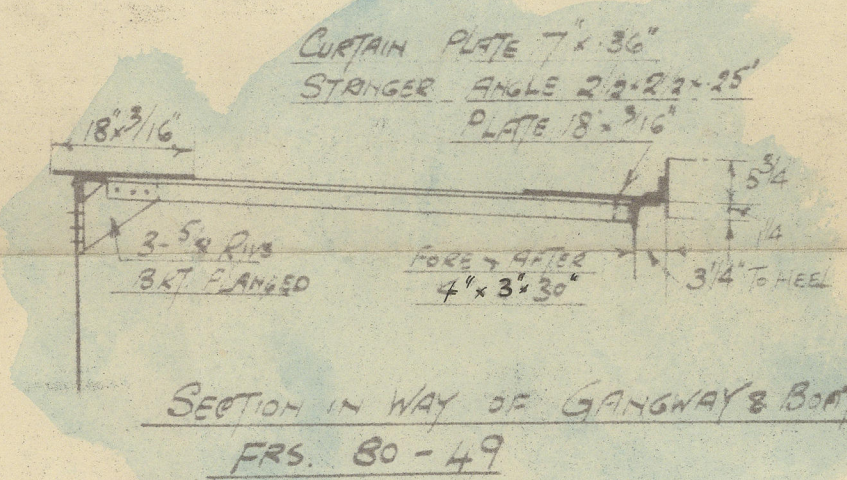
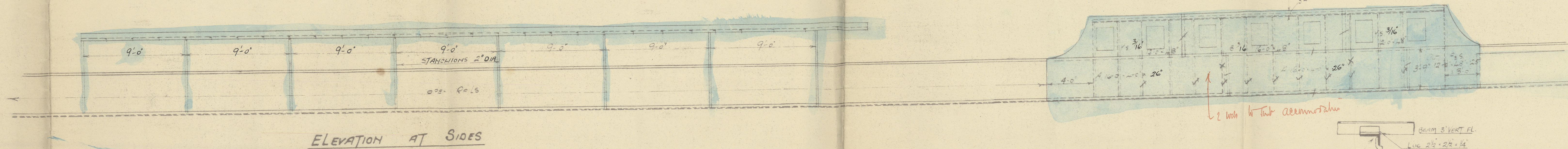
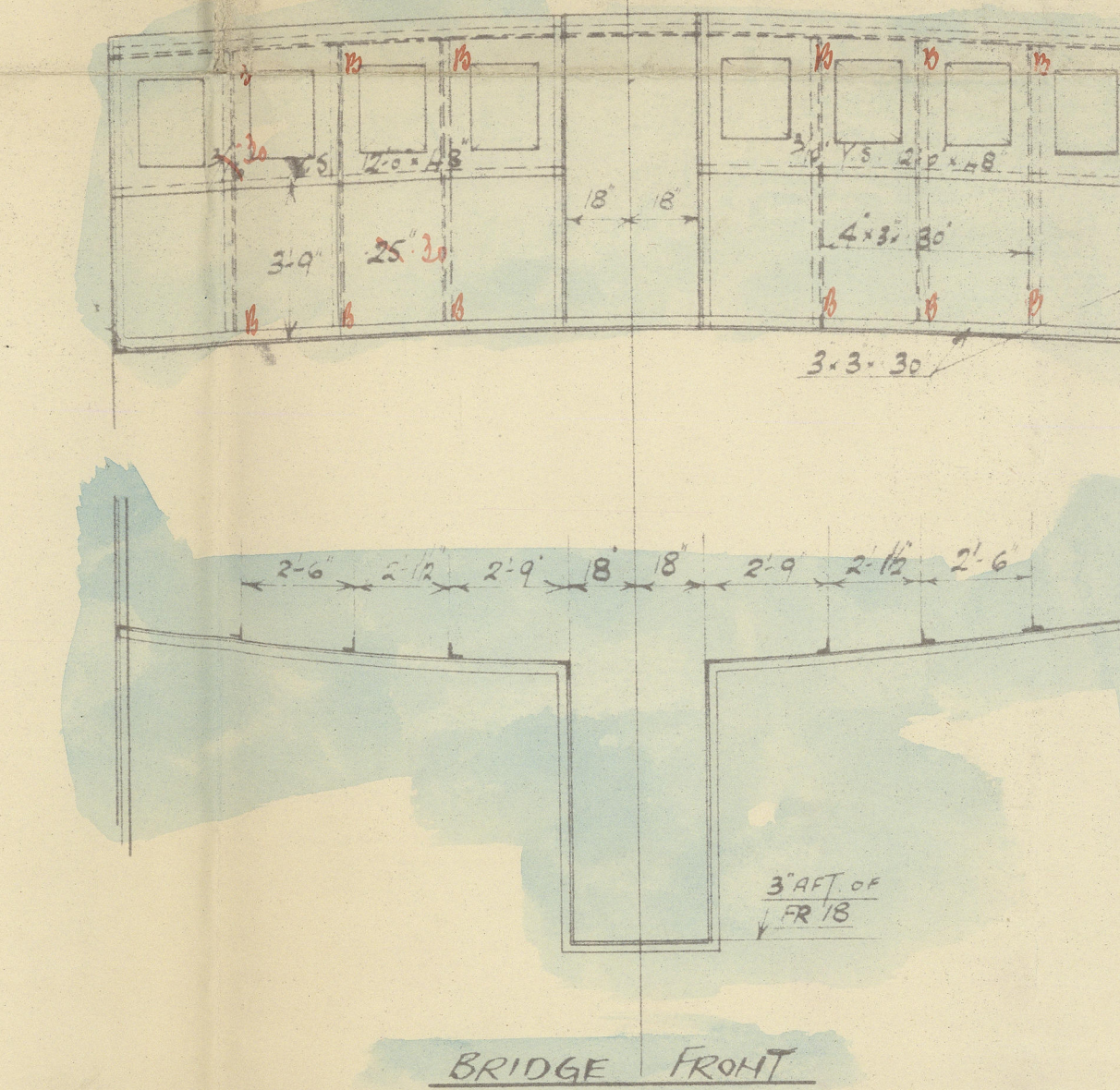
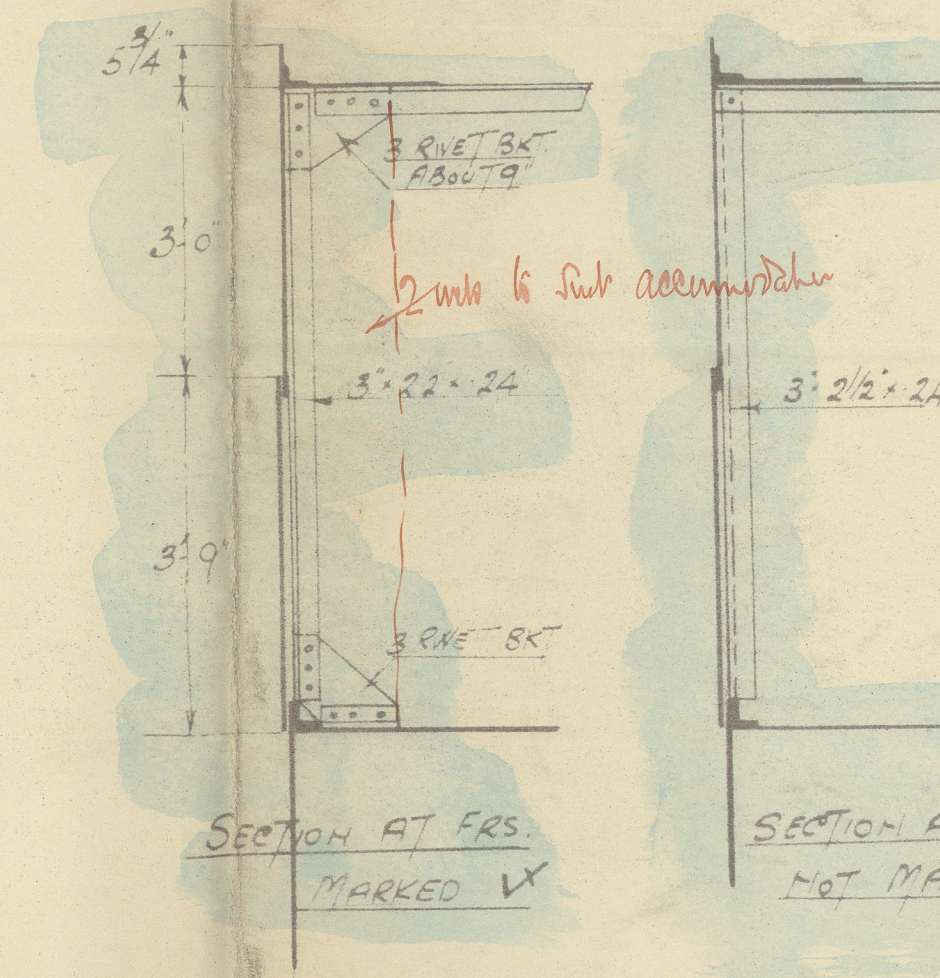
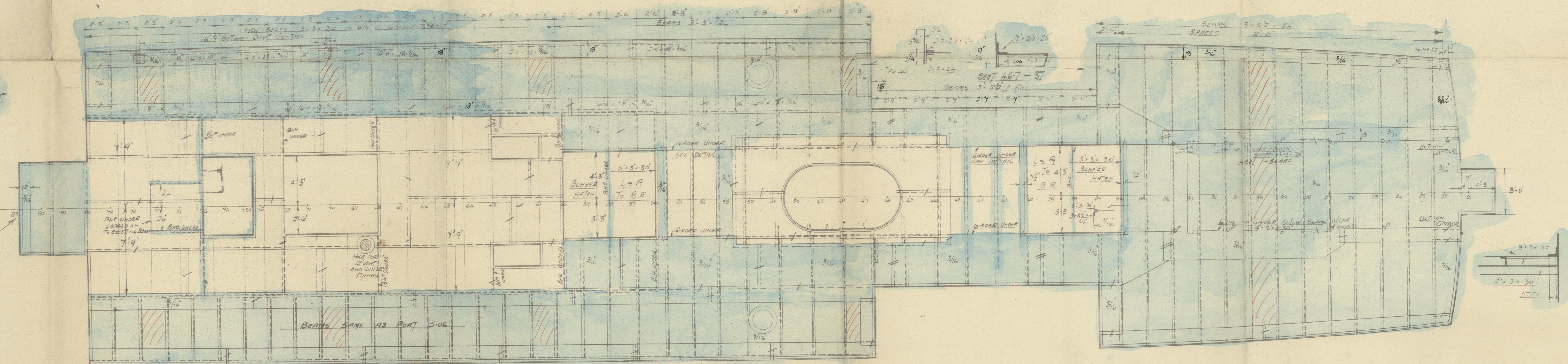
ALTERED PORTIONS TINTED IN BLUE.

SCALE 1/4" = 1 FOOT.



8/2/23

Trans

ORIGINAL FRAME
NUMBERS

APPROVED
LLOYD'S REGISTER OF SHIPPING
Montreal 8/2/23
DATE