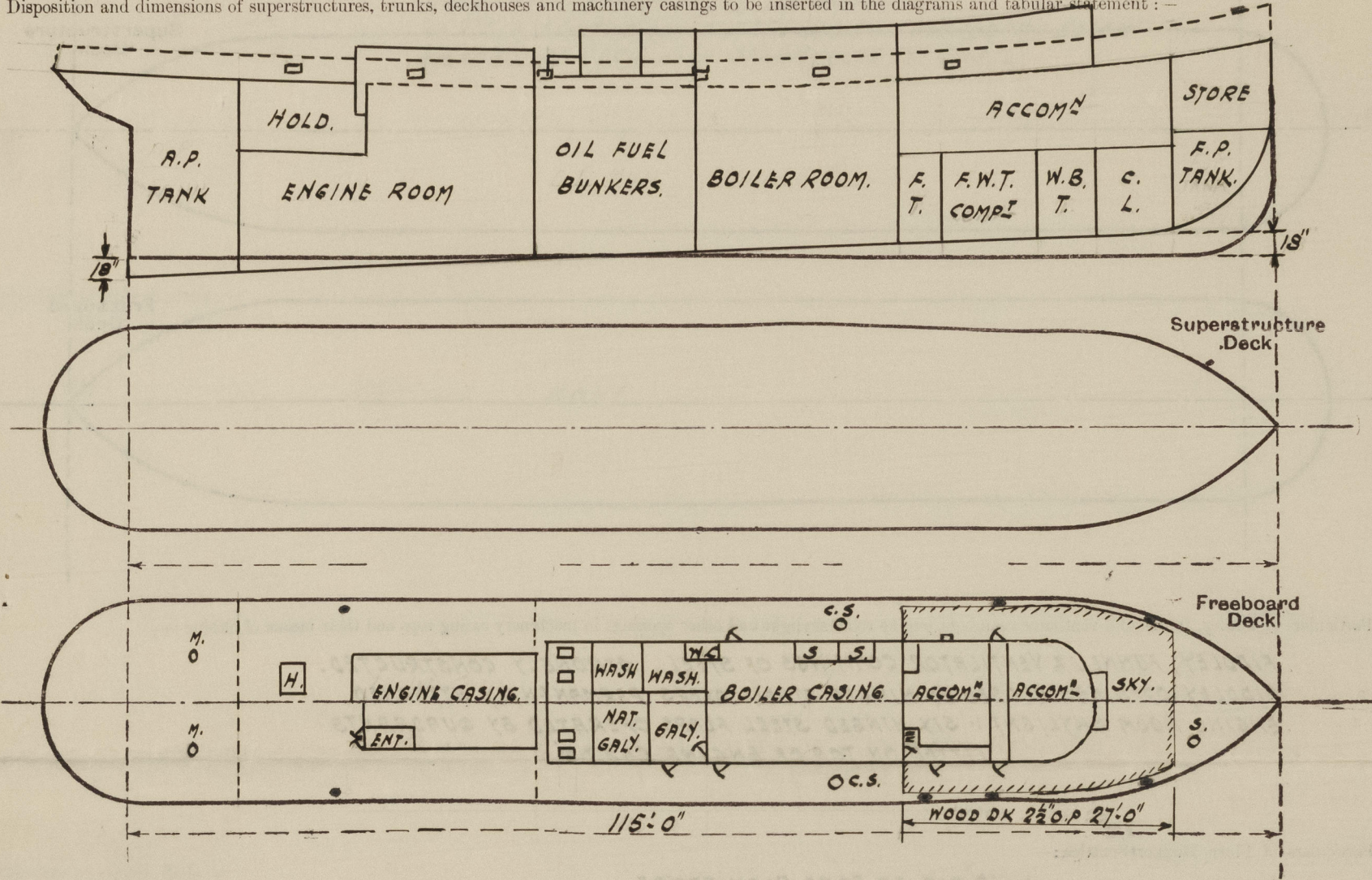


Lloyd's Register of Shipping.  
SURVEYS FOR FREEBOARD.  
(CONDITIONS OF ASSIGNMENT.)

GRK. REPORT N° 23258.

Ship's Name "EMPIRE RITA" Port of Survey PORT GLASGOW.  
Official Number 169470 Surveyor's Signature J. J. Jamieson  
Nationality and Port of Registry BRITISH, GLASGOW, Date of Survey WHILE BUILDING.

Disposition and dimensions of superstructures, trunks, deckhouses and machinery casings to be inserted in the diagrams and tabular statement:—

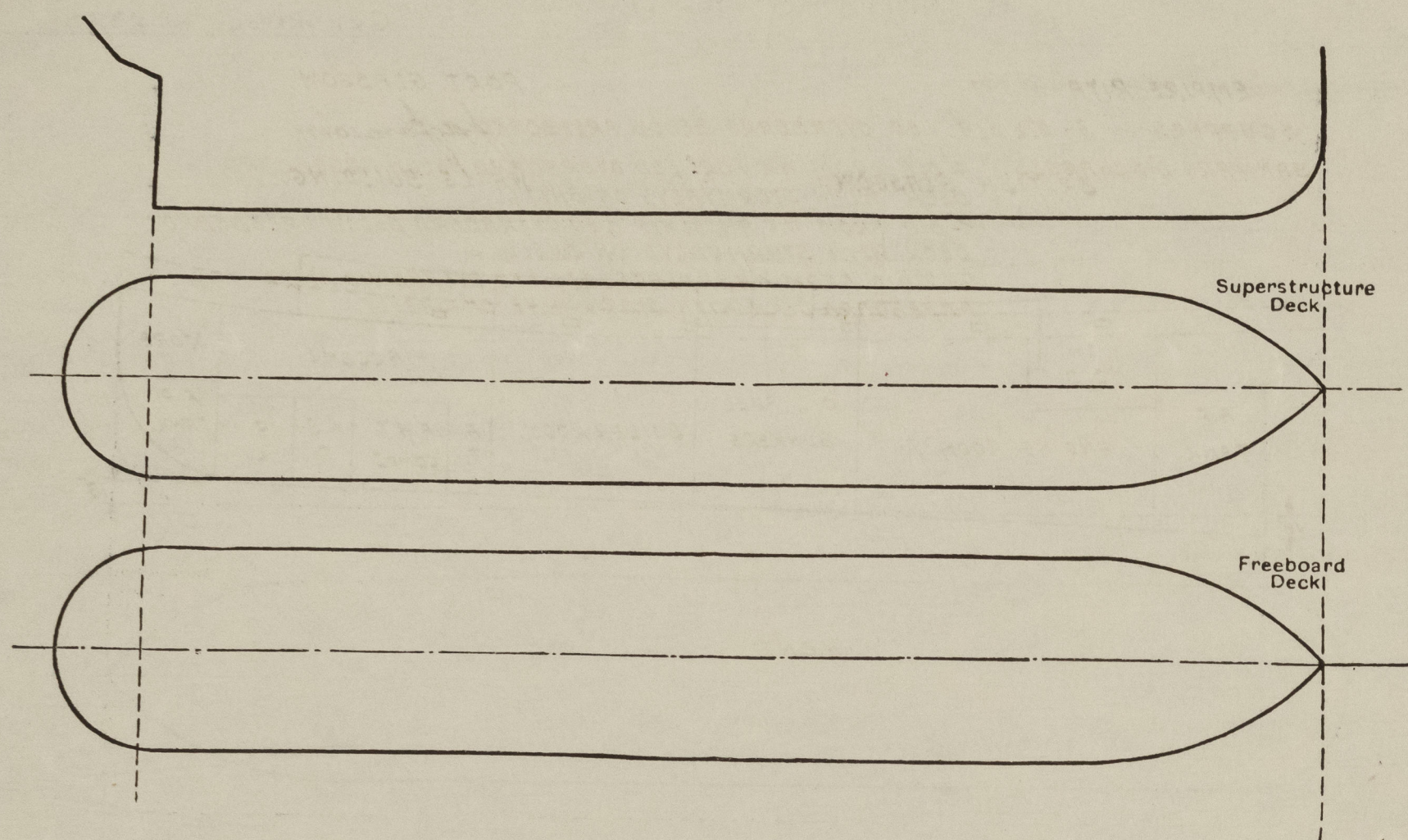


Particulars of Superstructures, Trunks, Casings, Deckhouses.								
	Coaming	Plating	Stiffeners	Spacing	End Attachments of Stiffeners	Size of Openings	Height of Sills	Height of Casings
Poop Bulkhead ... ..	-							
Raised Quarter Deck Bulkhead ...	-							
Bridge, After Bulkhead ... ..	-							
Bridge, Forward Bulkhead ... ..	-							
Forecastle Bulkhead ... ..	-							
Trunk, Aft ... ..	-							
Trunk, Forward ... ..	-							
Exposed Machinery Casings on Freeboard or Raised Quarter Decks ...	31"	26"	6x3x40 B.A. 3x2 1/2x30	19"-30"	BKTS. TOP DK BAR BOTM	4'3"x1'9" 2'2"x2'0"	24"	7'0" B.C. 4'0" E.C.
Exposed Machinery Casings on Superstructure Decks ... ..	-							
Machinery Casings within Superstructures not fitted with Class I Closing Appliances ... ..	-							
Deckhouses on Flush Deck Ships ...	-	26"	3x2 1/2x30	27'-30"	BKTS. TOP DK BAR BOTM	4'3"x2'0"	24"	7'0"
Particulars of Closing Appliances (state if capable of being manipulated from both sides).								
Poop Bulkhead ... ..	-							
Raised Quarter Deck Bulkhead ...	-							
Bridge, After Bulkhead ... ..	-							
Bridge, Forward Bulkhead ... ..	-							
Forecastle Bulkhead ... ..	-							
Exposed Machinery Casings on Freeboard or Raised Quarter Decks ...	STEEL & WOOD DOORS MANIPULATED FROM BOTH SIDES.							
Exposed Machinery Casings on Superstructure Decks ... ..	-							
Machinery Casings within Superstructures not fitted with Class I Closing Appliances ... ..	-							
Deckhouses on Flush Deck Ships ...	STEEL & WOOD DOORS MANIPULATED FROM BOTH SIDES.							



# PARTICULARS OF PROTECTION TO OPENINGS, ETC.

The following diagrams should be used to indicate the positions of cargo and coaling hatchways, gangway, cargo and coaling ports, ventilators, companionways, etc., which would affect the seaworthiness of the ship:—



Particulars of fiddle, funnel and ventilator coamings, engine room skylight and other openings in machinery casing tops and their means of closing:—

FIDDLE, FUNNEL & VENTILATOR COAMINGS OF STEEL, STRONGLY CONSTRUCTED.  
FIDDLE OPENINGS CLOSED BY HINGED STEEL COVERS PERMANENTLY ATTACHED.  
ENGINE ROOM SKYLIGHT: SIX HINGED STEEL FLAPS OPERATED BY QUADRANTS  
FITTED ON TOP OF ENGINE CASING

Particulars of Flush Bunker Scuttles:—

1- 18" DIA. TO FORE PEAK STORE  
2- 18" " " GALLEY COAL BUNKER.  
SCREW SCUTTLES OF SUBSTANTIAL CONSTRUCTION, PERMANENT CHAIN ATTACHMENT PROVIDED.

Particulars of Companionways:—

TO CREWS ACCOMMODATION FOR<sup>2</sup>: ENCLOSED IN STEEL DECKHOUSE. OPENING 4'-3" x 1'-9" CLOSED WITH HINGED STEEL DOOR. 24" SILL, OPERATED FROM BOTH SIDES.

Particulars of Ventilators in exposed positions on freeboard and superstructure decks:—

5- 7" x 3" TO CREWS ACCOM<sup>2</sup>. 2'-3" x 2'-7" TO LIP  
1- 6" x 4" " PANTRY STORE. 5'-6" " " STAYED.  
2- 7" x 3" " HOLD AFT. 2'-3" " " "

VENTILATORS PROVIDED WITH CANVAS COVERS.

Particulars of Air Pipes in exposed positions on freeboard, raised quarter, or superstructure decks:—

1- 2" DIA. TO FORE PEAK	3'-6" TO LIP.	2- 1 1/2" DIA. TO FEED TANK	2'-9" TO LIP
2- 2" " " W.B. TANK	3'-2" " "	2- 2" " " AFTER PEAK	2'-7" " "
2- 1 1/2" " " " " " "	" " " "	1- 2" " " STERN COMPI	" " " "
2- 2" " " F.W. T. COMPI	2'-10" " "	4- 3" " " O.F. BUNKERS	2'-8" " "
2- 2" " " F.W. TANK	" " " "	2- 2" " " CHAIN LOCKER	3'-5" " "
2- 1 1/2" " " " " " "	2'-9" " "		
2- 2" " " FEED TANK	" " " "		

AIR PIPES TO OIL FUEL BUNKERS. FITTED WITH WIRE GAUZE, REMAINDER PROVIDED WITH WOOD PLUGS.

Particulars of Gangway Cargo and Coaling Ports:—

NONE.

Particulars of Scuppers and Sanitary Discharge Pipes:—

SCUPPERS: 1- 3- 2 1/2" DIA. LED OVERBOARD BELOW FREEBOARD DECK.  
SANITARY DISCHARGES: 4" DIA FROM W.C. FOR<sup>2</sup> LED OVERBOARD BELOW FREEBOARD DECK. WITH STORMVALVE ON SHELL.  
4" DIA. FROM W.C. AMIDSHIP LED OVERBOARD BELOW FREEBOARD DECK WITH STORMVALVE ON SHELL.  
2- 2" DIA. FROM WASHPLACES ETC. LED OVERBOARD BELOW FREEBOARD DECK WITH STORMVALVE ON SHELL.

Particulars of Side Scuttles:—

NONE.

Vertical distance of Sill of lowest Side Scuttle above top of keel

Particulars of Guard Rails:—

STEEL BULWARK FITTED ALL FORE & AFT. 3'-0" HIGH. STRONGLY CONSTRUCTED.

Particulars of Gangways, Lifelines, etc.:—

LIFELINES FITTED FORE & AFT.

## Particulars of Freeing Arrangements.

	Length of Bulwark	Height of Bulwark	Size of Freeing Ports	Number each side	Area each side	Rule area each side'
After Well ... ..	115'-0"	3'-0"	2'-0" x 1'-0"	6	12 SQ. FT.	16.105/-
Forward Well ... ..						

State position of each freeing port ... .. (After Well:— 14'-9", 28'-9", 41'-0", 55'-0", 67'-3" & 80'-9" FROM AFT.  
(F. and A. position and height above deck edge) (Forward Well:— 8' ABOVE DECK.

State whether the freeing ports are fitted with shutters, bars, or rails, and give particulars of such:— SHUTTERS.

Additional area where sheer is less than standard.



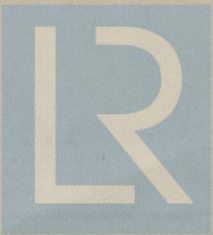
PARTICULARS OF PROTECTION TO OPENINGS, ETC.

HATCHWAYS ON FREEBOARD AND SUPERSTRUCTURE DECKS.										
Description of Hatchway		...	...	...	TO HOLD	TO OIL BUNKERS				
Dimensions of Hatchway		...	...	...	3'-0" x 5'-0"	4' x 2'-6" x 1'-6"				
COAMINGS	{	Height above Deck	...	...	18"	12"				
		Thickness	{	Sides	...	...	...	...	...	
				Ends	...	...	...	...	...	
		Stiffeners	...	...	...	...	...	...	...	...
		Brackets, Stays	...	...	-	-				
HATCH BEAMS	{	Number	...	...						
		Spacing	...	...						
		Scantling and Sketch	...							
		Bearing Surface	...							
FORE AND AFTERS	{	Number	...	...						
		Spacing	...	...						
		Unsupported Lengths	...							
		Scantling* and Sketch	...							
		Bearing Surface	...	...						
HATCH COVERS	{	Material	...	...	WOOD	STEEL				
		Thickness	...	...	2 1/2"	.50"				
		How fitted	...	...	ATH.	HINGED				
		Bearing Surface	...	...	3"	SECURED.				
Spacing of Cleats		...	...	...	24"	BY CLIPS.				
Number of Tarpaulins		...	...	...	2					
<div>*Are wood fore and afters steel shod at all bearing surfaces ? Are battens and wedges efficient and in good condition ? Are tarpaulins in good condition and in accordance with rule requirements ? Are lashings provided in accordance with rule requirements ?</div> <div>- YES. YES YES</div>										

Particulars of any special features :—

Endorsement at first survey and at surveys for renewal of Certificate :—

The fittings and appliances are in accordance with the particulars shown on this form (or as now modified) and are in good condition.



© 2021

Lloyd's Register Foundation