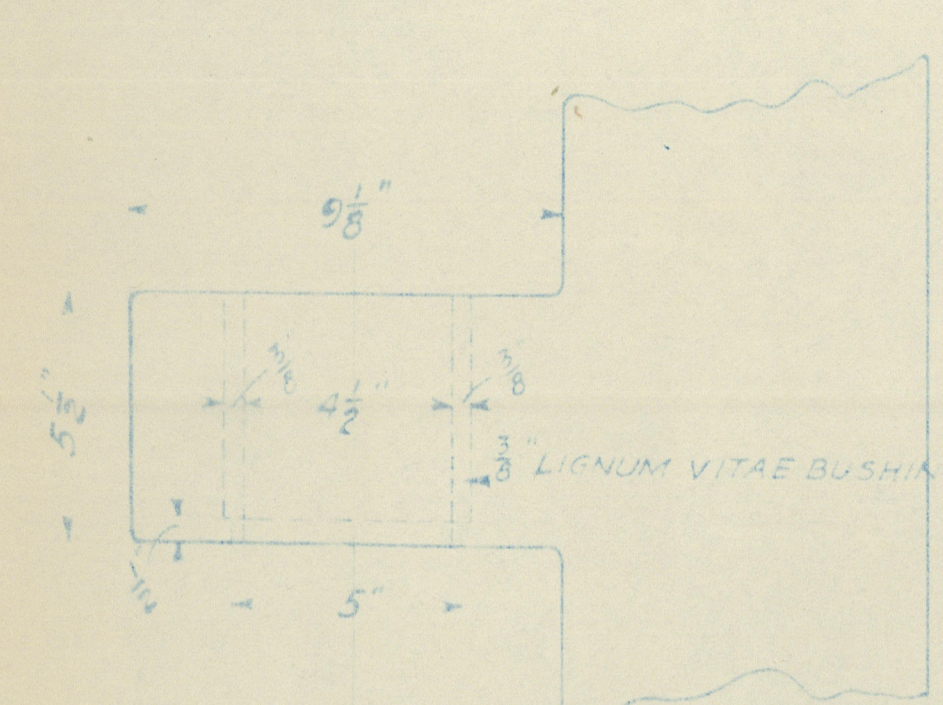
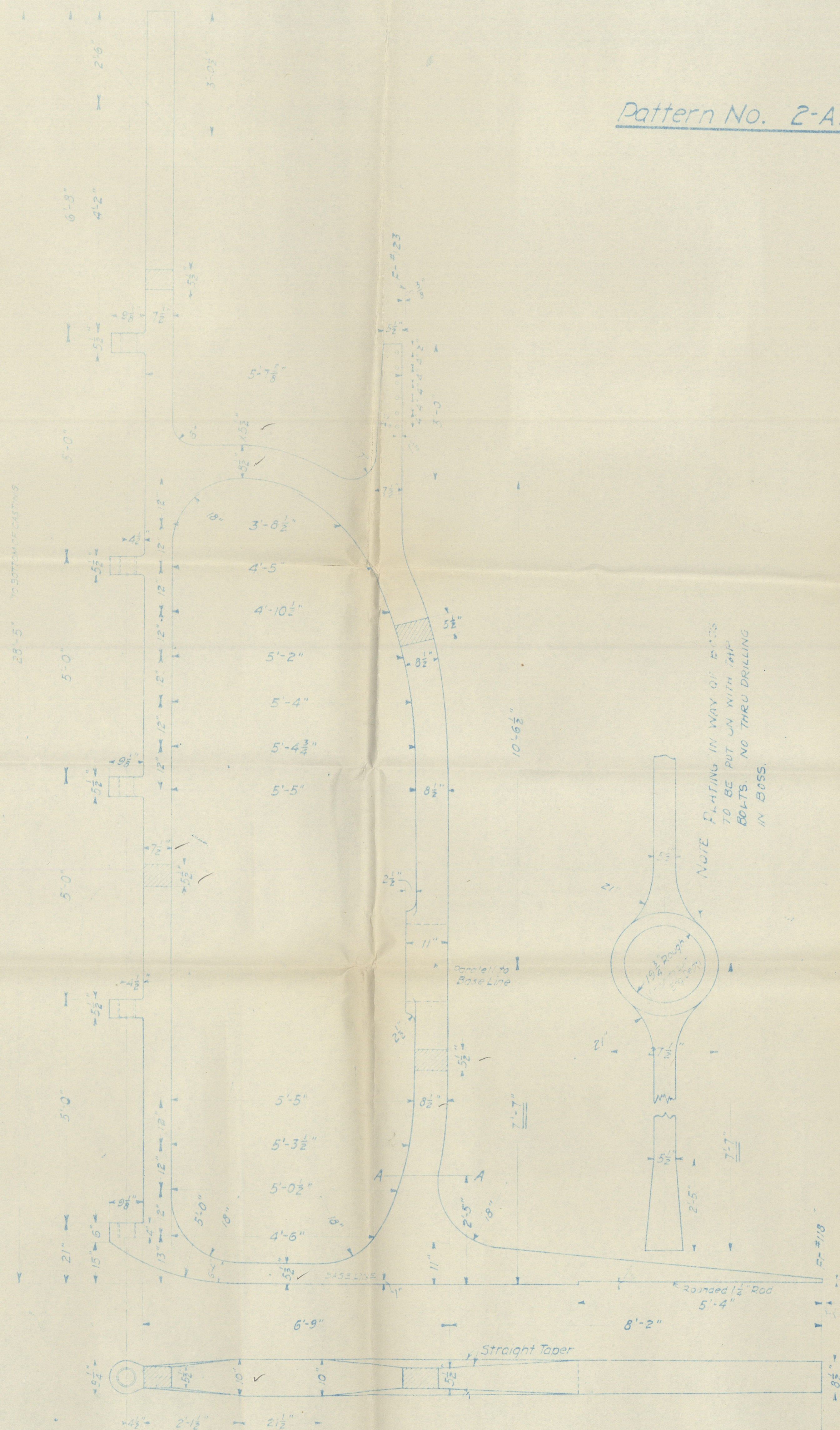
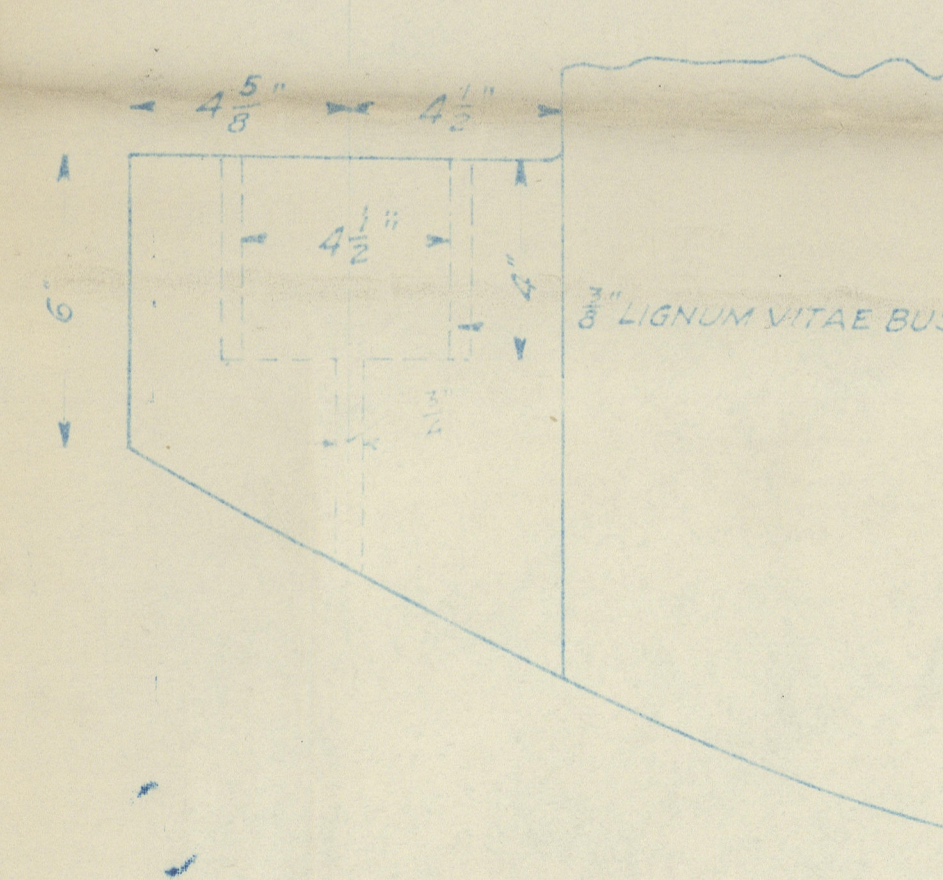
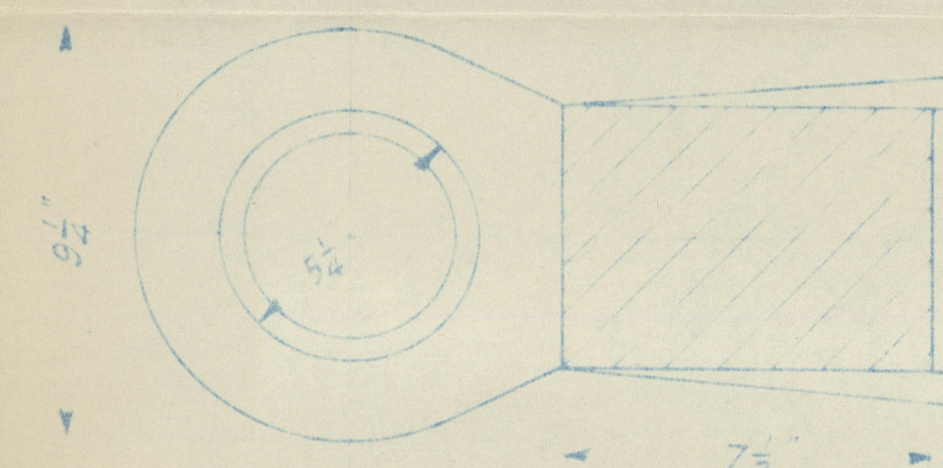
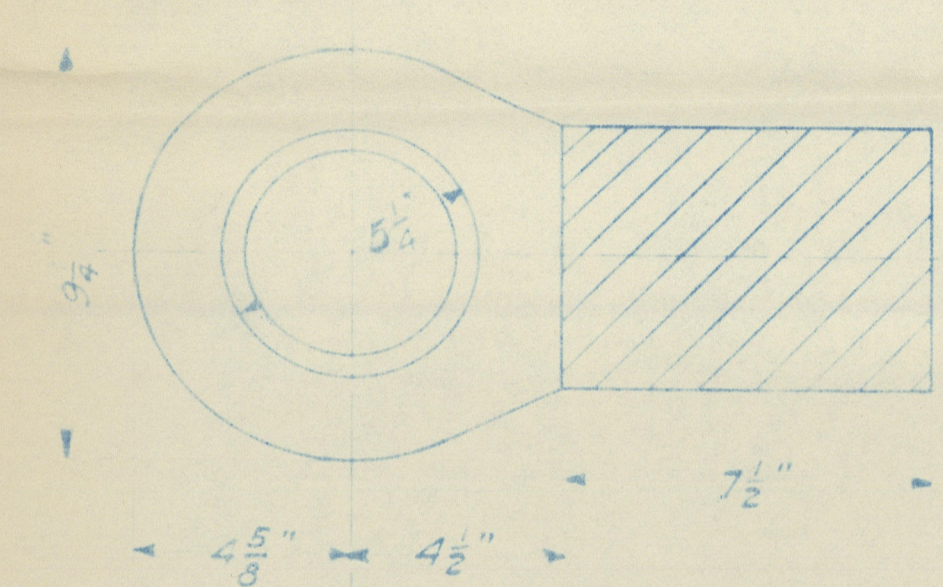


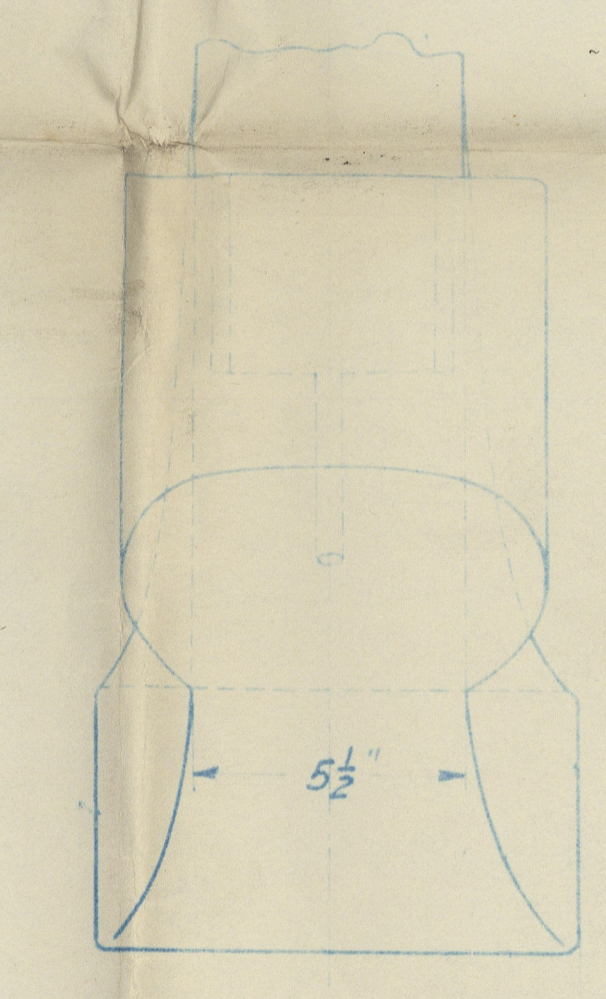
Pattern No. 2-AB-3



GUDGEONS
3"=1'



HEEL GUDGEON
3"=1 FT.



NOTES:
GUDGEONS TO BE BORED IN
LATHE TO ASSURE A TRUE LINE
AND TO BE DRILLED IN
SEASON OR AROUND BOSS BEFORE
PLATING IS FITTED.
MATERIAL: CAST STEEL TO PASS
LLOYDS & AMB. RULES OF 3-PPING
REQUIREMENTS

London City

REVISIONS	DESCRIPTION	DATE	BY
1	APPROVED	SEP 30 1927	LLOYDS REGISTER OF SHIPPING NEW YORK

PRINT NO.	REV.	DATE	TITLE
1	1	SEP 30 1927	STERN POST 3/5 CERRO GARDIA
McDOUGALL-DULUTH COMPANY SHIPBUILDERS & ENGINEERS DULUTH, MINN., U. S. A.			
SCALE 3/4" = 1 FT.		CHARGE NO. 5	MULL 1327-36
DRAWN	TRACED	CHECKED	APPROVED
3131			