

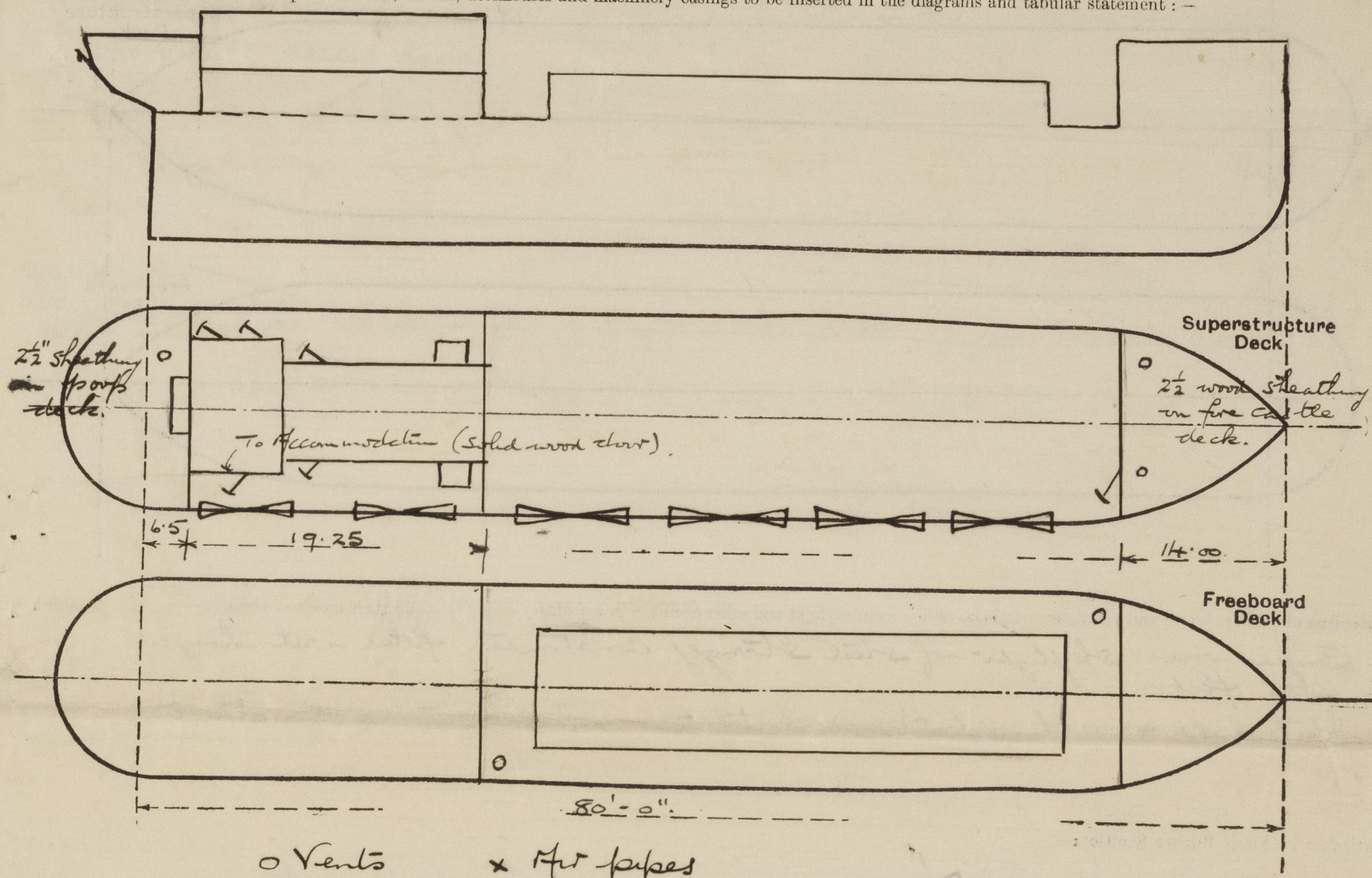
Id 6093

Port of Survey *Northwich*

Surveyor's Signature *Harry S. Newton*

Date of Survey *While building*

Disposition and dimensions of superstructures, trunks, deckhouses and machinery casings to be inserted in the diagrams and tabular statement : —



o Vents x Air pipes

	Coaming	Plating	Stiffeners	Spacing	End Attachments of Stiffeners	Size of Openings	Height of Sills	Height of Casings
Poop Bulkhead ... ..	. 26		$2\frac{1}{2} \times 2\frac{1}{2} \times 25$ OA	30"	None	None	✓	6'-0"
Raised Quarter Deck Bulkhead ...	. 26		$4 \times 2\frac{1}{2} \times 30$ OA	$28\frac{1}{2} \rightarrow 30$	Bkls @ top. Boundary angle at bottom.	None	✓	$4 \times 2\frac{1}{2}$ " sheathing 3'-0"
Bridge, After Bulkhead ... ..								
Bridge, Forward Bulkhead ... →	. 26	. 20	$2\frac{1}{2} \times 2\frac{1}{2} \times 26$ OA.	$30 \times 31\frac{1}{2}$	None.	$1\frac{1}{2}'' \times 1'-9''$	21"	7'-0" $4 \times 2\frac{1}{2}$ " sheathing
Forecastle Bulkhead ... ..								
Trunk, Aft ... ..								
Trunk, Forward ... ..								
Exposed Machinery Casings on <del>Free Board</del> Raised Quarter Decks ...	. 24		$3 \times 2\frac{1}{2} \times 30$ OA.	$28\frac{1}{2} \rightarrow 30$	Bkls @ top - 15°	$1\frac{1}{2} \times 1'-9''$	21.	6'-9"
Exposed Machinery Casings on Superstructure Decks ... ..								
Machinery Casings within Superstructures not fitted with Class I Closing Appliances ... ..								
Deckhouses on Flush Deck Ships ...								

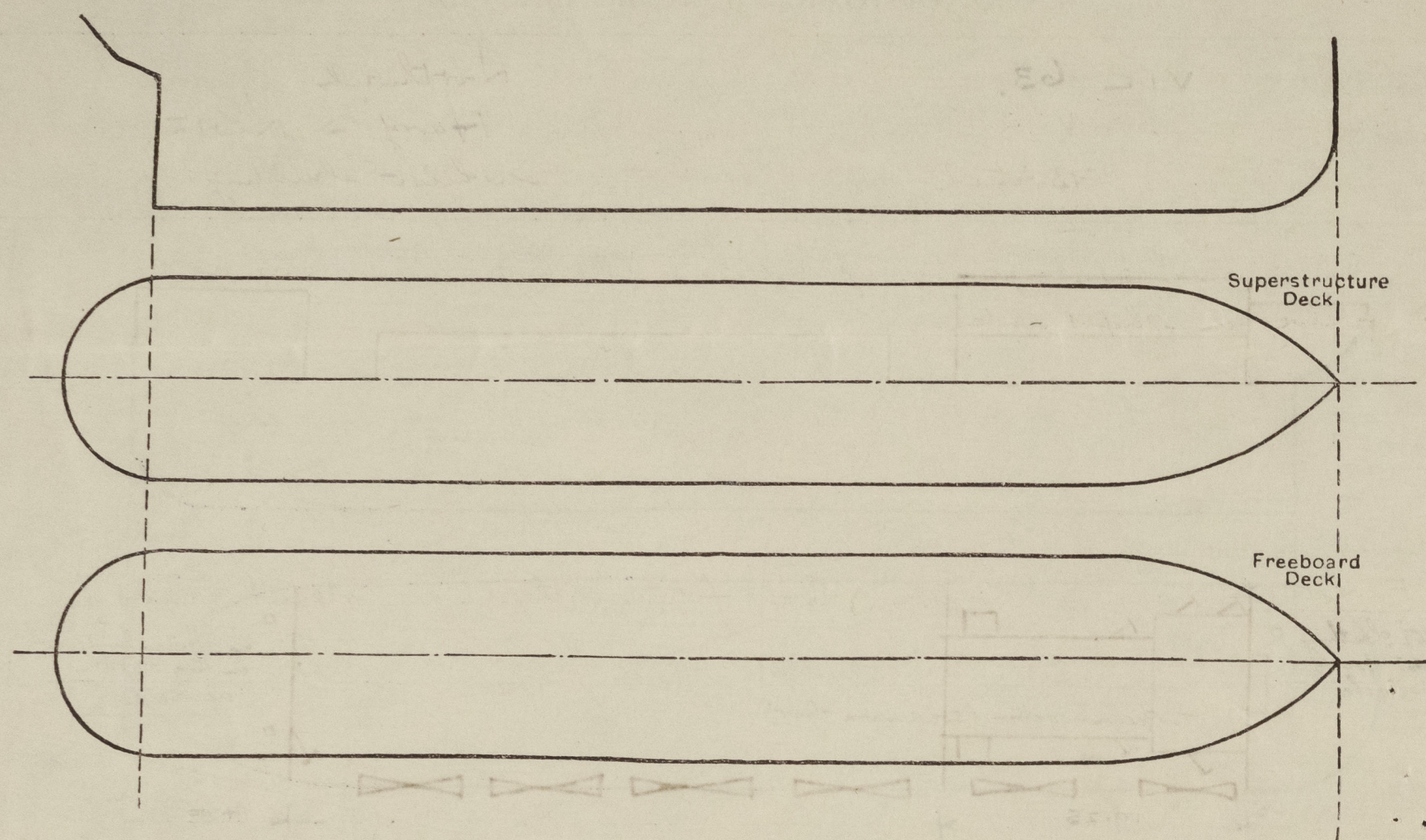
Particulars of Closing Appliances (state if capable of being manipulated from both sides).

Poop Bulkhead	...	...	Intact - No openings
Raised Quarter Deck Bulkhead	...	...	Intact - No openings
Bridge, After Bulkhead	...	...	✓
Bridge, Forward Bulkhead	...	...	✓
Forecastle Bulkhead	...	...	Hinged steel - operated both sides.
Exposed Machinery Casings on Fore- board or Raised Quarter Decks	...	...	Four hinged steel doors operated both sides - one solid 2" W.P. door to accom. operate both sides.
Exposed Machinery Casings on Super- structure Decks	...	...	✓
Machinery Casings within Superstruc- tures not fitted with Class I Closing Appliances	...	...	✓
Deckhouses on Flush Deck Ships	...	...	✓



# PARTICULARS OF PROTECTION TO OPENINGS, ETC.

The following diagrams should be used to indicate the positions of cargo and coaling hatchways, gangway, cargo and coaling ports, ventilators, companionways, etc., which would affect the seaworthiness of the ship:—



Particulars of hiddle, funnel and ventilator coamings, engine room skylight and other openings in machinery casing tops and their means of closing:—

Engine room skylight of steel strongly constructed fitted with hinged steel flaps.  
 Stockhold & machinery space ventilators of substantial construction.

Particulars of Flush Bunker Scuttles:—

None.

Particulars of Companionways:—

None.

Particulars of Ventilators in exposed positions on freeboard and superstructure decks:—

Forecastle. 2 @ 8" dia x 1/4". Coaming 36" high to cross space.  
 upper deck. 2 @ 10" dia x 1/4". Coaming 36" high to main cargo hold  
 Poop. 1 @ 6" dia x 1/4". Coaming 36" high to aft cabin.

Vents fitted with wood plugs & canvas covers.

Particulars of Air Pipes in exposed positions on freeboard, raised quarter, or superstructure decks:—

On fore-castle deck to fire tank tanks. One air pipe 1 1/2" dia.  
 Height to opening 18". Fitted with wood plug.

Particulars of Gangway Cargo and Coaling Ports:—

None

Nic 63.

Particulars of Scuppers and Sanitary Discharge Pipes:— Three scuppers (P+S) in well @ 2 1/2" x 2 1/4" at level of upper deck. One open scupper @ in R.Q.D. bulwarks (P+S).  
 One 4" sanitary discharge on port side from W.C. on raised quarter deck fitted with storm valve on ships side (G.M.)  
 One 2" dia discharge from galley sink (P) fitted with G.M. storm valve on ships side.

Particulars of Side Scuttles:—

Fore-castle One 10" dia (P+S) brass fitted with hinged deadlight.  
 Poop. One 10" dia. (P+S) " " " " }

Vertical distance of Sill of lowest Side Scuttle above top of keel

13'-6"

Particulars of Guard Rails:—

Rails 1" dia. stanchions spaced 4'-0" apart fitted on poop & fore-castle.

Particulars of Gangways, Lifelines, etc.:—

Lifelines fitted P+S in well between fore-castle & raised quarter deck bulkheads.

## Particulars of Freeing Arrangements.

	Length of Bulwark	Height of Bulwark	Size of Freeing Ports	Number each side	Area each side	Rule area each side
After Well ... ..	40.25.	36"	4'-3" x 12".	4.	170 sq	* 15.73 sq
Forward Well R.Q.D. ...	19.25.	36"	4'-3" x 12"	2	85 sq	8.4 sq

State position of each freeing port ... .. After Well: from R.Q.D. bulkhead: 1'-3", 10'-7", 20'-0" & 29'-8".  
 (F. and A. position and height above deck edge) Forward Well: from poop bulkhead: 1'-0" & 14'-4".

State whether the freeing ports are fitted with shutters, bars, or rails, and give particulars of such:— Bars.

Additional area where sheer is less than standard. is provided.

\* Includes 50% excess for no sheer



PARTICULARS OF PROTECTION TO OPENINGS, ETC.

HATCHWAYS ON FREEBOARD AND SUPERSTRUCTURE DECKS.									
Description of Hatchway			Main Fwd. deck.		Oil Bunker Hatchways on R. P. D.				
Dimensions of Hatchway			31'-6" x 13'-6"		18" x 18"				
COAMINGS	{	Height above Deck	27"		3"	12"			
		Thickness	.36"			.30"			
		Sides	None (corroded)			✓			
		Ends	4 @ sides 1 @ ends welded plate bbs.			✓			
HATCH BEAMS	{	Number	7						
		Spacing	4'-0"						
		Scantling and Sketch	I 8" x 5" x 28 lbs. H beams.		✓				
		Bearing Surface	3"						
FORE AND AFTERS	{	Number							
		Spacing							
		Unsupported Lengths							
		Scantling* and Sketch							
		Bearing Surface							
HATCH COVERS	{	Material	W.P			Steel			
		Thickness	2 1/2"			.30"			
		How fitted	F & A			Bolted and tight			
		Bearing Surface	2 1/2"			steel covers.			
Spacing of Cleats			24" - 6" from ends			✓			
Number of Tarpaulins			2.			✓			

- \*Are wood fore and afters steel shod at all bearing surfaces?
- Are battens and wedges efficient and in good condition?
- Are tarpaulins in good condition and in accordance with rule requirements?
- Are lashings provided in accordance with rule requirements?

Yes  
Yes  
Yes  
Yes  
Extra lashings provided in accordance with requirement for ships with hatchways exceeding in breadth 60% that of the ship.

Particulars of any special features:—

19.

Endorsement at first survey and at surveys for renewal of Certificate:—

The fittings and appliances are in accordance with the particulars shown on this form (or as now modified) and are in good condition.

