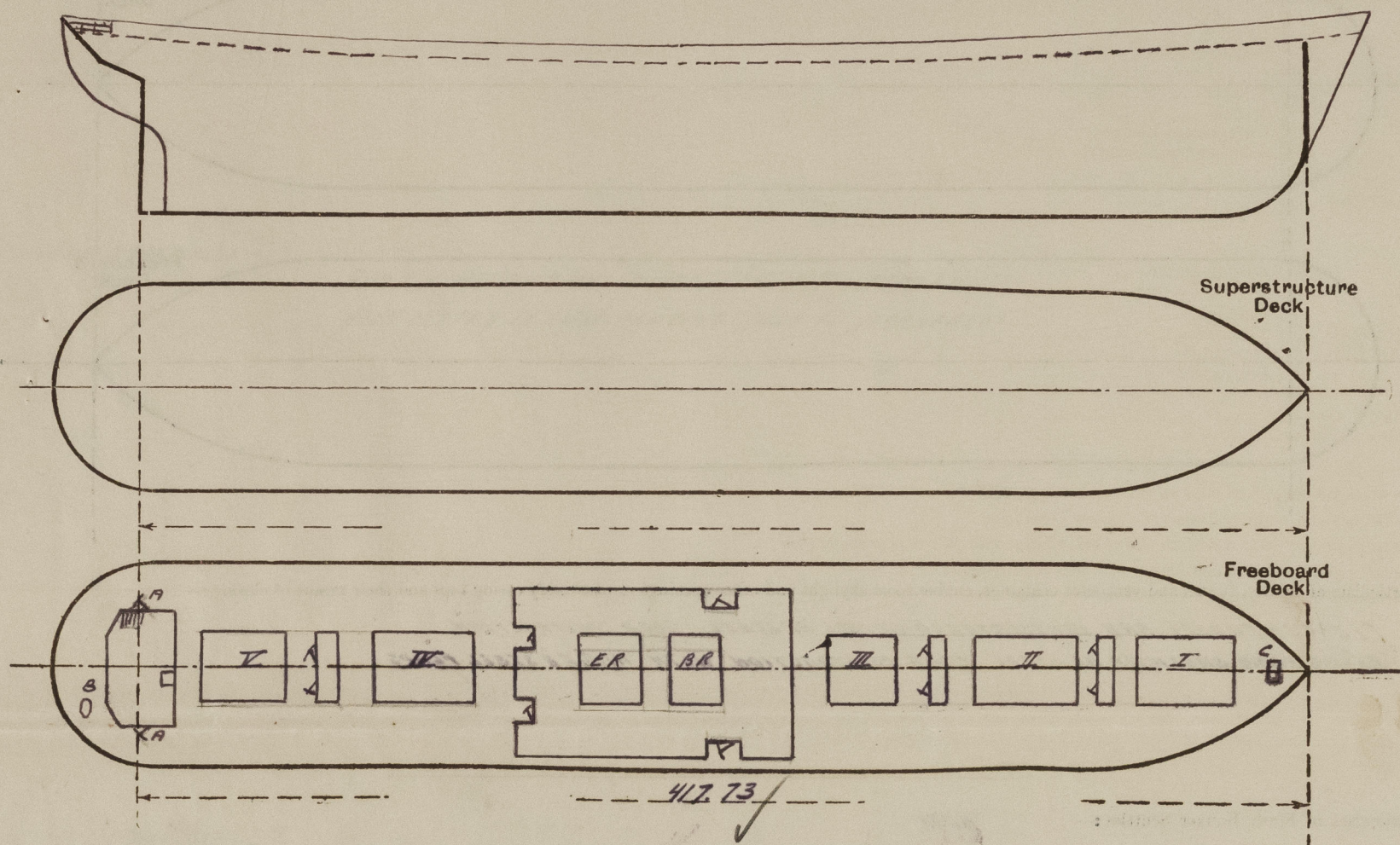


Index No. 42
(For London Office only)

Disposition and dimensions of superstructures, trunks, deckhouses and machinery casings to be inserted in the diagrams and tabular statement :—

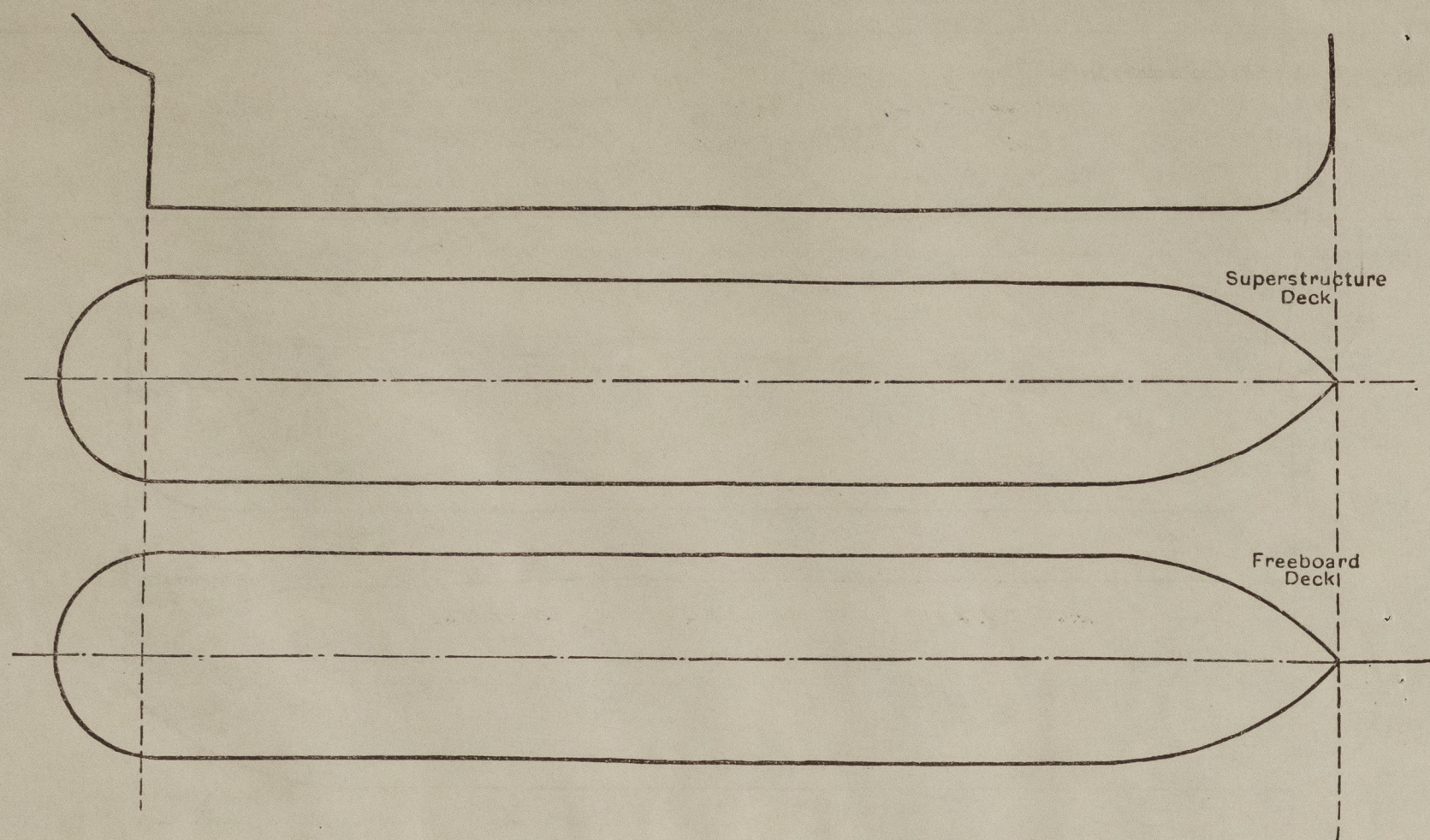


Particulars of Superstructures, Trunks, Casings, Deckhouses.								
	Coaming	Plating	Stiffeners	Spacing	End Attachments of Stiffeners	Size of Openings	Height of Sills	Height of Casings
Poop Bulkhead	✓							
Raised Quarter Deck Bulkhead ...	✓							
Bridge, After Bulkhead	✓							
Bridge, Forward Bulkhead	✓							
Forecastle Bulkhead	✓							
Trunk, Aft	✓							
Trunk, Forward	✓							
Exposed Machinery Casings on Free- board or Raised Quarter Decks ...	NONE EXPOSED							
Exposed Machinery Casings on Super- structure Decks								
Machinery Casings within Superstruc- tures not fitted with Class I Closing Appliances								
Deckhouses on Flush Deck Ships ...	-	. 25	FRONT 6 x 4 x .38 SIDES 4 x 3 x .30	30	BRACKETS TOP & W. BOTTOM BRACKETS TOP	60 x 26 60 x 30	15 15	7' 6" v

Particulars of Closing Appliances (state if capable of being manipulated from both sides).	
Poop Bulkhead	✓
Raised Quarter Deck Bulkhead ...	✓
Bridge, After Bulkhead	✓
Bridge, Forward Bulkhead	✓
Forecastle Bulkhead	✓
Exposed Machinery Casings on Free-board or Raised Quarter Decks ...	✓
Exposed Machinery Casings on Super-structure Decks	✓
Machinery Casings within Superstructures not fitted with Class I Closing Appliances	✓
Deckhouses on Flush Deck Ships ...	1 (P+S) SIDES 1 (P+S) AFT END PASSAGEWAY. HINGED STEEL W.T. DOORS OPERATED BOTH

PARTICULARS OF PROTECTION TO OPENINGS, ETC.

The following diagrams should be used to indicate the positions of cargo and coaling hatchways, gangway, cargo and coaling ports, ventilators, companionways, etc., which would affect the seaworthiness of the ship:—



Particulars of fiddley, funnel and ventilator coamings, engine room skylight and other openings in machinery casing tops and their means of closing:—

FIDLEY - FUNNEL AND VENTILATOR COAMINGS OF STEEL. GOOD CONSTRUCTION.
ENGINE ROOM SKYLIGHT OF STEEL. GOOD CONSTRUCTION WITH HINGED STEEL FLAPS.

Particulars of Flush Bunker Scuttles:—

NONE

Particulars of Companionways:— STEEL HOUSES AROUND MASTS ENCLOSING ENTRANCES TO TWEENDECKS AND HOLDS OPENINGS 40" x 26". 18" SILLS CLOSING WITH HINGED STEEL W.T. DOORS. ✓
ONE STEEL DECK HOUSE AFT WITH 2 OPENINGS (A) 60 x 26" WITH SILL 15" LEADING TO STEERING ENGINE CLOSED WITH HINGED STEEL W.T. DOORS. ✓

Particulars of Ventilators in exposed positions on freeboard and superstructure decks:—

TWO VENTILATOR COAMINGS 9" DIA. 36" COAMING 36" HIGH
TWO 20 24" DIA. 44" COAMING 36" HIGH
TWO 20 18" DIA. 40" COAMING 9" HIGH SUFFICIENT SUPPORTED. ✓
TWO 20 24" DIA. 44" COAMING 36" HIGH
TWO 20 9" DIA. 36" COAMING 36" HIGH
TWO 20 5" DIA. 30" COAMING 6" HIGH SUFFICIENT SUPPORTED. ✓
TWO 20 9" DIA. 36" COAMING 36" HIGH
ONE 20 12" DIA. 36" COAMING 36" HIGH.

WOOD PLUGS AND CANVAS COVERS SUPPLIED.

Particulars of Air Pipes in exposed positions on freeboard, raised quarter, or superstructure decks:—

ALL AIRPIPES 36" ABOVE FREEBOARD DECK. WIRE GAUZE ON MOUTHS AND HINGED STEEL FLAPS OR WOOD PLUGS FITTED. ✓

Particulars of Gangway Cargo and Coaling Ports:—

NONE

Particulars of Scuppers and Sanitary Discharge Pipes:—

SCUPPERS AND SANITARY DISCHARGES ARE ALL FROM SPACES ABOVE FREEBOARD DECK AND OPENINGS ON SHIP'S SIDES HAVE STORM VALVES OF GOOD CONSTRUCTION. ✓

Particulars of Side Scuttles:—

GOOD CONSTRUCTION COMPLETE WITH DEAR LIGHTS.
NONE FITTED IN SHELLPLATING ONLY IN DECK HOUSES. ✓

Vertical distance of Sill of lowest Side Scuttle above top of keel NONE BELOW FREEBOARD DECK ✓

Particulars of Guard Rails:—

CLOSED BULWARK 44" HIGH .20 THICK. SUFFICIENT SUPPORTED. ✓

Particulars of Gangways, Lifelines, etc.:—

PROVISION FOR FITTING LIFELINES. ✓

Particulars of Freeing Arrangements.

	Length of Bulwark	Height of Bulwark	Size of Freeing Ports	Number each side	Area each side	Rule area each side
After Well ... } ...	417.73	44"	47" x 10"	17		
Forward Well ... } ...						

CONT. SLOT 1" BETWEEN TOP EDGE OF STEER STRAKE AND BOTTOM OF BULWARK PL.

State position of each freeing port ... } After Well:—
(F. and A. position and height above deck edge) } Forward Well:— } 6"

State whether the freeing ports are fitted with shutters, bars, or rails, and give particulars of such:— NONE

Additional area where sheer is less than standard.

PARTICULARS OF PROTECTION TO OPENINGS, ETC.

HATCHWAYS ON FREEBOARD AND SUPERSTRUCTURE DECKS.										
Description of Hatchway		I	II	III	IV	V	TO FORE PEAK		TO ST. SEAK SPACE	
Dimensions of Hatchway		33'9" x 20'	35' x 20'	20' x 20'	35' x 20'	35' x 20'	3' x 3'	24' x 16'	OVAL	
COAMINGS	Height above Deck	36					10"	15"		
	Thickness	.63					.36	.36		
	Stiffeners	6/12 x 3 1/2								
	Brackets, Stays	5 STRAYS ± 5 FEET							✓	
HATCH BEAMS	Number	6	6	3	6	6				
	Spacing	4'10"	5'0"	5'0"	5'0"	5'0"				
	Scantling and Sketch	I 7 x .45 26 x .31 7 x .45								
	Bearing Surface	3 ✓								
FORE AND AFTERS	Number									
	Spacing									
	Unsupported Lengths									
	Scantling* and Sketch			NONE						
HATCH COVERS	Material	WOOD					STEEL	STEEL		
	Thickness	2 1/2					.30	.30		
	How fitted	F-A ✓					HINGED W.T.			
	Bearing Surface	3					COVERS	✓		
Spacing of Cleats		24					WITH TOSGLES.			
Number of Tarpaulins		3								

*Are wood fore and afters steel shod at all bearing surfaces? YES
 Are battens and wedges efficient and in good condition? YES
 Are tarpaulins in good condition and in accordance with rule requirements? YES.
 Are lashings provided in accordance with rule requirements? LOUISIANA BARS.

Hatch covers fitted with steel bands.

Particulars of any special features:—

Endorsement at first survey and at surveys for renewal of Certificate:—

The fittings and appliances are in accordance with the particulars shown on this form (or as now modified) and are in good condition.



© 2021

Lloyd's Register Foundation