

No 416

# MIDSHIP SECTION.



SCALE 1/2" TO ONE FOOT.

PRINCIPAL DIMENSIONS.	
LENGTH BETWEEN P.S.	345'-0"
BREADTH MOULDED	48'-0"
DEPTH TO A.W.N. DK.	30'-0"
TWEEN DK. HEIGHT	8'-6"
POOP BRIDGE & CASTLE DK. HEIGHT	7'-6"
LENGTH OF BRIDGE.	73'-6"

SCANTLING NUMBERS.	
B	48
D	22
TRANSVERSE NO	70
L	345
LONGITUDINAL NO	24150
TO A.W.N. DK.	115
d	18-2

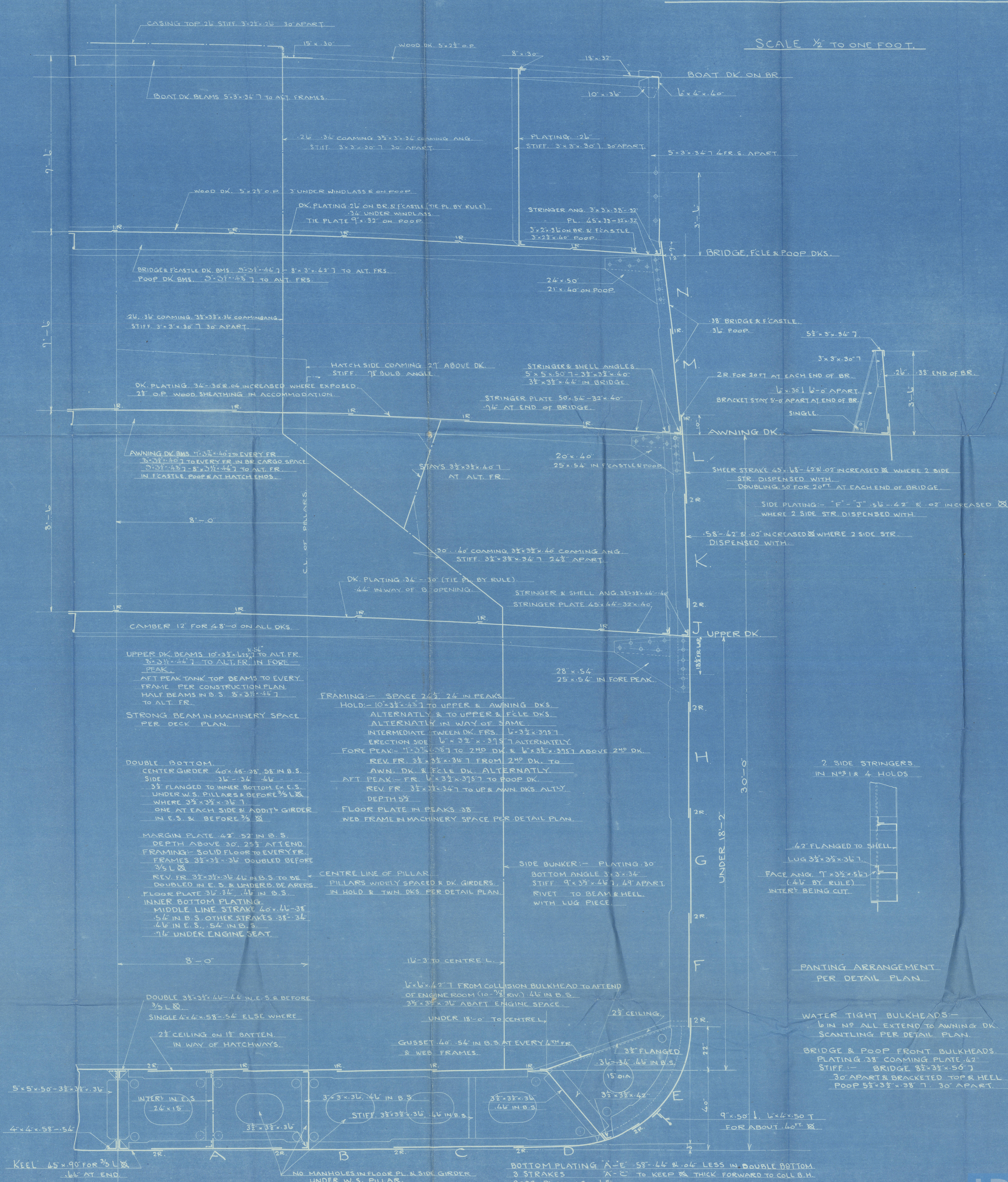
EQUIPMENT NUMBER	
L x (B+D)	24150
AWN. DK. (345x8x75)	2070
ERECTOR (130.62x75x75)	734.74
DECK HOUSES. 69.42x75x5)	260.32
NUMERAL	27.215.06

EQUIPMENTS	
2-DOWER ANCHORS (STOCKLESS) 525 CWT (48% CWT BY RULE)	
1-ANCHOR (COMMON) 14 (13)	
1-STREAM (COMMON) 14 (13)	
1-KEDGE (COMMON) 14 (13)	
200 FATHOMS 2 1/2" STUD CHAIN CABLE (2" BY RULE)	
90 4 1/2" STEEL WIRE FOR STREAM ANCHOR TOWLINE	
120 4"	
4 COILS OF 90 FATHOMS OF 7 MANILA WARPS.	

ROWS OF RIVETS IN BUTTS	
ITEMS	ENDS
BR. CASTLE & POOP DKS. STRINGER PL.	2
PLATES	1
POOP DECK TIE PLATE	2
AWNING DECK STRINGER PLATE	3
PLATING	2
UPPER DECK STRINGER PLATE	3
PLATING	1
BR. CASTLE & POOP SIDE PLATING	2
AWNING DK. SHEER STRAKE	3
STRAKE BELOW	3
SIDE PLATING OF SHELL	3-2
BOTTOM PLATING OF SHELL	3
BOSS PLATING	4
MIDDLE STRAKE OF INNER BOTTOM	3
INNER BOTTOM PLATING	2
MARGIN PLATE	2
CENTRE GIRDER	3-2
KEEL PLATE	4-3

RIVETING.	
ITEM	PITCH & DIA. OF RIV.
FRAME TO SHELL	1 1/2" IN PEAK TANK & AT BOTTOM & SIDE 3/8" L & 1/2"
FLOORS IN AFT PEAK	5/8"
REV. FR.	5/8"
SHELL PLATE BUTTS	3/8" & ON 1/2" BUTTLAP
SEAMS	4
DECK PLATE TO BEAMS	7/8" ON BEAMS TO AFT FR.
BUTTS OF STRINGER PLATE	3/8"
TIE	4
DECK	4
EDGES	4 1/2"
QUINWALE ANGLE	4 1/2"
DK. STRINGER ANGLE	7
DOUBLE BOTTOM	
BUTTS OF MARGIN PLATE & GIDER	4
& EDGES OF INNER BOTTOM PL.	4 1/2"
MARGIN ANGLE	4 1/2"
KEEL	5
FR. TO FLOOR PL. & REV. FR.	7
VERTICAL ANGLE ON CENTRE GIRDER	5
SIDE	7
ANGLE AT TOP OF CENTRE GIRDER	7 1/2" WHERE W.T.
SIDE GIDERS ANGLE	4 RIVETS BKT. FR.
BULKHEAD PLATING	4 1/2"
BOUNDARY ANGLE	5
STIFFENERS	7
SIDE STRINGER FACE ANGLE	7
SHELL ANGLE OF INTERCOSTAL	4 RIVETS BKT. FR.
W.S. PILLARS & GIDERS	7
GIRDER TO DECK	5
STEM STERN FRAME	5

FORGING & CASTING.	
STEM	10" x 2 1/2" ROLLED OR FORGED STEEL (1 1/2" BY RULE)
STERN FR. (PROPELLER POST 7 1/2" x 1 1/2")	CAST STEEL
RUDDER	8 1/2" x 1 1/2"
RUDDER FRAME	PER DETAIL PLAN





Kob. 2531

Midship Section

<sup>9</sup>  
Flankow Mom<sup>9</sup>

Rpt NO Kob. 2531



© 2021

Lloyd's Register  
Foundation



K 416

S/S Hankow Maru  
Kawasaki Dockyard

Midship Section

009590 - 009600 - 0152



© 2021

Lloyd's Register  
Foundation