

3 - NOV 1947

Index No. 39341
(For London Office only.)

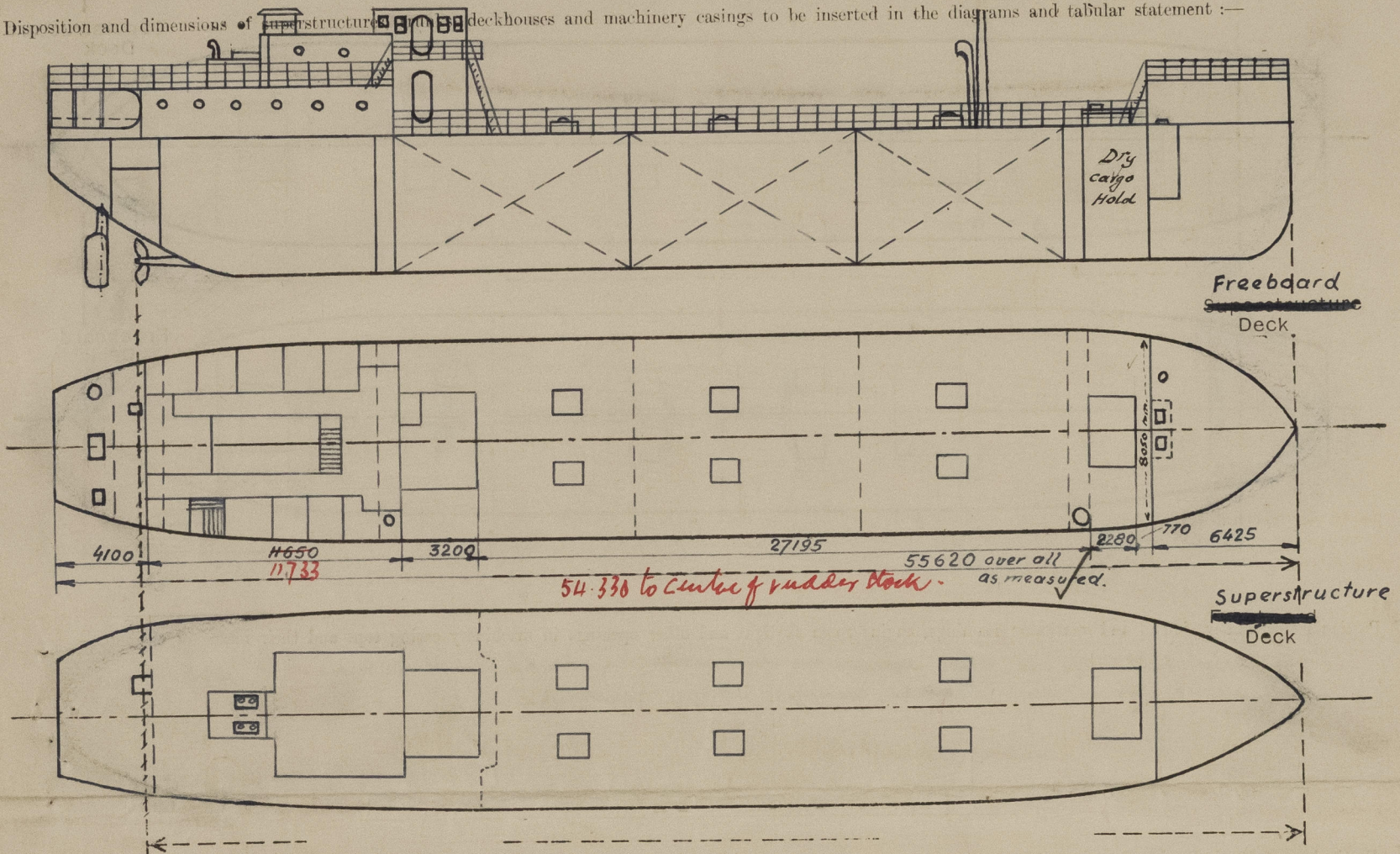
Lloyd's Register of Shipping.

SURVEYS FOR FREEBOARD.

(CONDITIONS OF ASSIGNMENT.)

Ship's Name M.V. "TURNIA" ex M.V. U.S. Army Y-75 Port of Survey Gdynia
 Official Number 5 P A G Surveyor's Signature H. C. A. J. J. J. J.
 Nationality and Port of Registry Polish, Gdynia Date of Survey 28th June - 8th August 1947

Disposition and dimensions of superstructure, deckhouses and machinery casings to be inserted in the diagrams and tabular statement :-



Particulars of Superstructures, Trunks, Casings, Deckhouses.

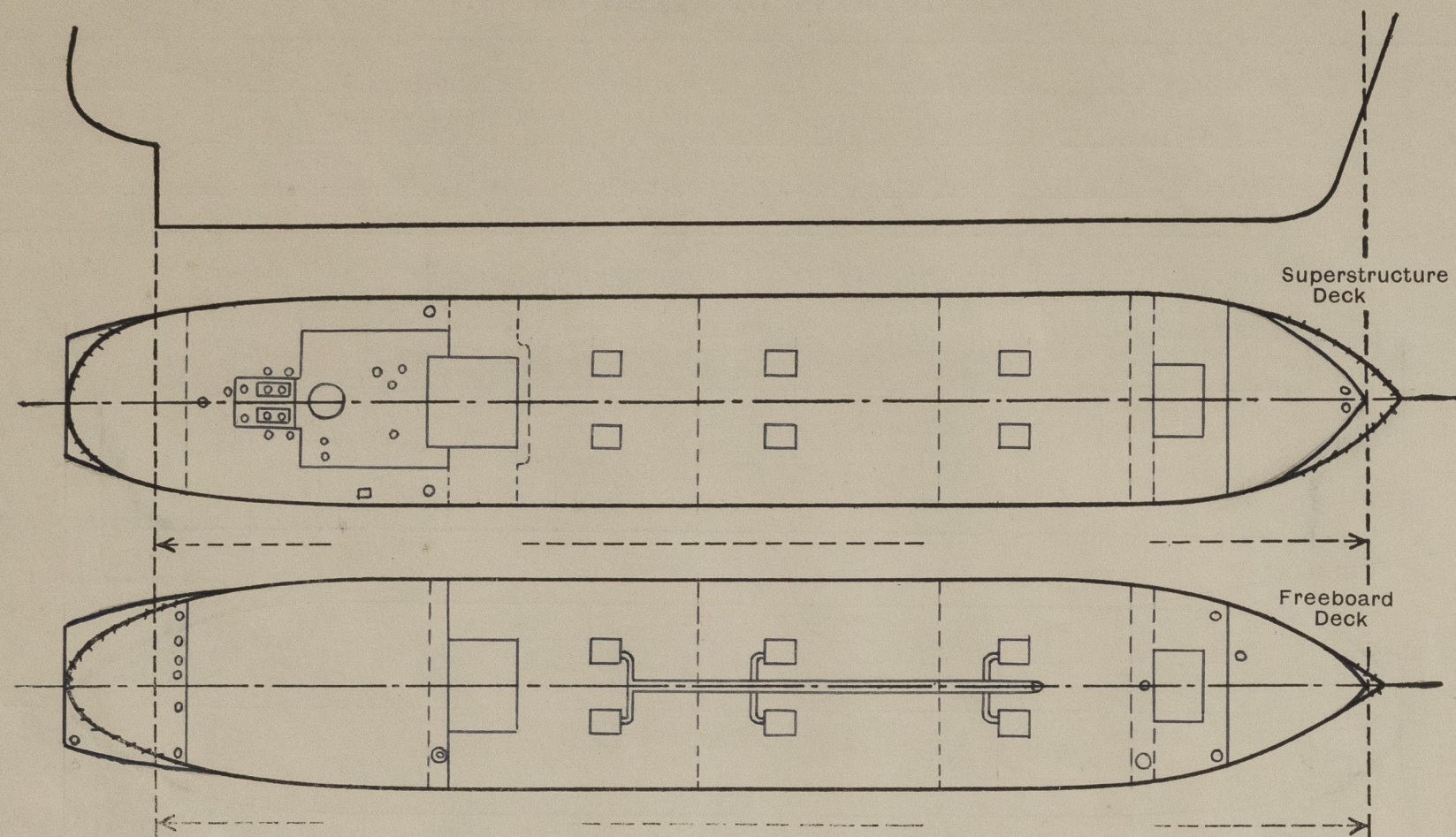
	Coaming	Plating	Stiffeners	Spacing	End Attachments of Stiffeners	Size of Openings	Height of Sills	Height of Casings
Poop Bulkhead ...								
Raised Quarter Deck Bulkhead ...								
Bridge, After Bulkhead ...	full height	8 mm	L 75 x 75 x 7 ✓	800 to 920 mm	welded without brackets	1- 7620 x 530 mm. 4- 400 mm. dia.	450 mm	8380 mm
Bridge, Forward Bulkhead ...	" "	10 "	L 90 x 130 x 8 ✓	600 "	"	2- 1620 x 530 mm. 6- 200 mm dia.	510 "	3350 "
Forecastle Bulkhead ...	" "	10 "	L 100 x 80 x 12 ✓	600 "	"	1- 1620 x 530 "	300 "	2100 "
Trunk, Aft ...								
Trunk, Forward ...								
Exposed Machinery Casings on Freeboard or Raised Quarter Decks ...								
Exposed Machinery Casings on Superstructure Decks ...								
Machinery Casings within Superstructures not fitted with Class I Closing Appliances ...								
Deckhouses on Flush Deck Ships ...								

Particulars of Closing Appliances (state if capable of being manipulated from both sides).

Poop Bulkhead ...	
Raised Quarter Deck Bulkhead ...	
Bridge, After Bulkhead ...	1 steel door 1620 x 530 and 450 mm. sill above freeboard deck, manipulated from both sides.
Bridge, Forward Bulkhead ...	4 scuttles 400 mm. dia. with steel deadlight inside 1 scuttle 300 mm. dia. in the door - manipulated from inside.
Forecastle Bulkhead ...	2 steel doors 1620 x 530 and 450 mm. sill above freeboard deck, manipulated from both sides.
Exposed Machinery Casings on Freeboard or Raised Quarter Decks ...	2 scuttles 300 mm. dia. in the doors, manipulated from inside; deadlights.
Exposed Machinery Casings on Superstructure Decks ...	1 steel door 1620 x 530 and 300 mm. sill above freeboard deck, operated from both sides.
Machinery Casings within Superstructures not fitted with Class I Closing Appliances ...	1 scuttle 300 mm. dia. with steel deadlight inside.
Deckhouses on Flush Deck Ships ...	

PARTICULARS OF PROTECTION TO OPENINGS, ETC.

The following diagrams should be used to indicate the positions of cargo and coaling hatchways, gangway, cargo and coaling ports, ventilators, companionways, etc., which would affect the seaworthiness of the ship:—



Particulars of filley, funnel and ventilator coamings, engine room skylight and other openings in machinery casing tops and their means of closing:—

Engine casing 2370 x 750 mm above superstructure deck strongly constructed with 2 hinged steel skylights with glasses 2300 mm. dia. Ventilator coamings strongly constructed.

Particulars of Flush Bunker Scuttles:—

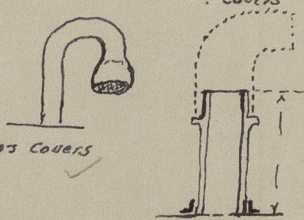
None.

Particulars of Companionways:—

Deckhouse on bridge deck with steel doors strongly constructed 1620 x 530 mm with 510 mm sill. None. Doors operated both sides.

Particulars of Ventilators in exposed positions on freeboard and superstructure decks:—

Forecastle - Vent. pipe 100 mm. dia. and 200 mm. high port & std. to store, screw & cap ✓
 Forward well " " 350 " " " 2500 " " port & std. to hold (combined Ventil. and Samson post), closed with wood plugs and canvas. ✓
 Bridge House " " 100 " " " 150 " " port & std. to oil fuel tanks, gauze wire. ✓
 " " 150 " " " 270 " " Centre " WC. on lavatory - screw and cap. ✓
 " " 450 " " " 770 " " port & std. " engine room - Protected by casings. ✓
 " " 50 " " " 95 " " { 3-port " office, accommod. } screwed plugs and canvas covers ✓
 " " 150 " " " 270 " " std. " " " }
 " " 75 " " " 150 " " port " Oil fuel pump room - closed by gauze wire ✓
 " " 80 x 80 " " 540 " " std. " galley - hinged steel cover ✓
 Oil fuel vents fitted with gauze wire and screwed caps. ✓



Ventilation of oil cargo tanks - one common 110 mm. dia. pipe from all tanks, leading to vertical pipe 3800 mm. high. ✓

Particulars of Air Pipes in exposed positions on freeboard, raised quarter, or superstructure decks:—

Forecastle air pipe 50 mm. dia. and 600 mm. high - port - to forepeak - screwed cap ✓
 Forward well " " 70 " " " 625 " " centre " cofferdam - gauze wire ✓
 Bridge House " " 50 " " " 500 " " port & std. " oil fuel tank - gauze wire ✓
 " " 75 " " " 440 " " port & std. " engine room - steel cover ✓
 " " 50 " " " 550 " " port " Sanitary pipe - screwed cap ✓
 " " 50 " " " 2100 " " port & std. " fresh water tank - gauze wire ✓
 " " 50 " " " 2100 " " port " Lubric. oil tank - gauze wire and screwed cap ✓
 " " 50 " " " 1320 " " port " oil fuel tank " " " " ✓
 " " 60 " " " 70 " " std. " cofferdam aft. " " " " ✓
 " " 50 " " " 600 " " centre " afterpeak space - screwed plug. ✓

Particulars of Gangway Cargo and Coaling Ports:—

None.

M/V TURNIA.

Particulars of Scuppers and Sanitary Discharge Pipes:—

Starboard Sanitary discharge pipe from office, accommod. 45 mm. dia. fitted with non return valve - discharging just below freeboard deck ✓
 " " " " galley 100. " " " " " " " " " " ✓
 Port Sanitary " " " crew WC. 100. " " " " " " " " " " ✓
 " " " " lavatory 45 " " " " " " " " " " ✓

Particulars of Side Scuttles:—

6 - Side scuttles 400 mm. dia. in the after Bridge house, - crew accommodation fitted with steel hinged dead lights. ✓

Vertical distance of Sill of lowest Side Scuttle above top of keel

5830 mm. above top of keel

Particulars of Guard Rails:—

freeboard deck aft
 1) On the freeboard deck, above the 480 mm. high bulwark chains guard is provided with stretching screws, 1000 mm. above the freeboard deck.
 2) Guard rails 930 mm. high are provided between Bridge house and Forecastle stanchion 1730 mm. apart
 3) Guard rails on Bridge House deck 930 mm. above the deck.
 4) Guard rails on the Forecastle deck 780 mm. high. Stanchion 1050 mm. apart

Particulars of Gangways, Lifelines, etc.:—

None.

Particulars of Freeing Arrangements.

	Length of Bulwark	Height of Bulwark	Size of Freeing Ports	Number each side	Area each side	Rule area each side
After Well ...	3.05 m	17"	100 x 230 mm	4.	0.092 sq. mts	bulwark only 450 mm high
Forward Well ...	4100 mm.	480 mm.	Open rails from the forward bulkhead of Bridge House to the Forecastle Bulkhead.			
State position of each freeing port ... { After Well:— (F. and A. position and height above deck edge) { Forward Well:—						
State whether the freeing ports are fitted with shutters, bars, or rails, and give particulars of such:—						
Additional area where sheer is less than standard. —						

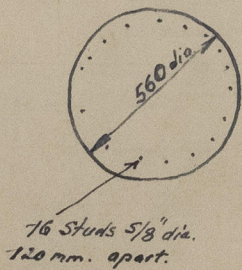
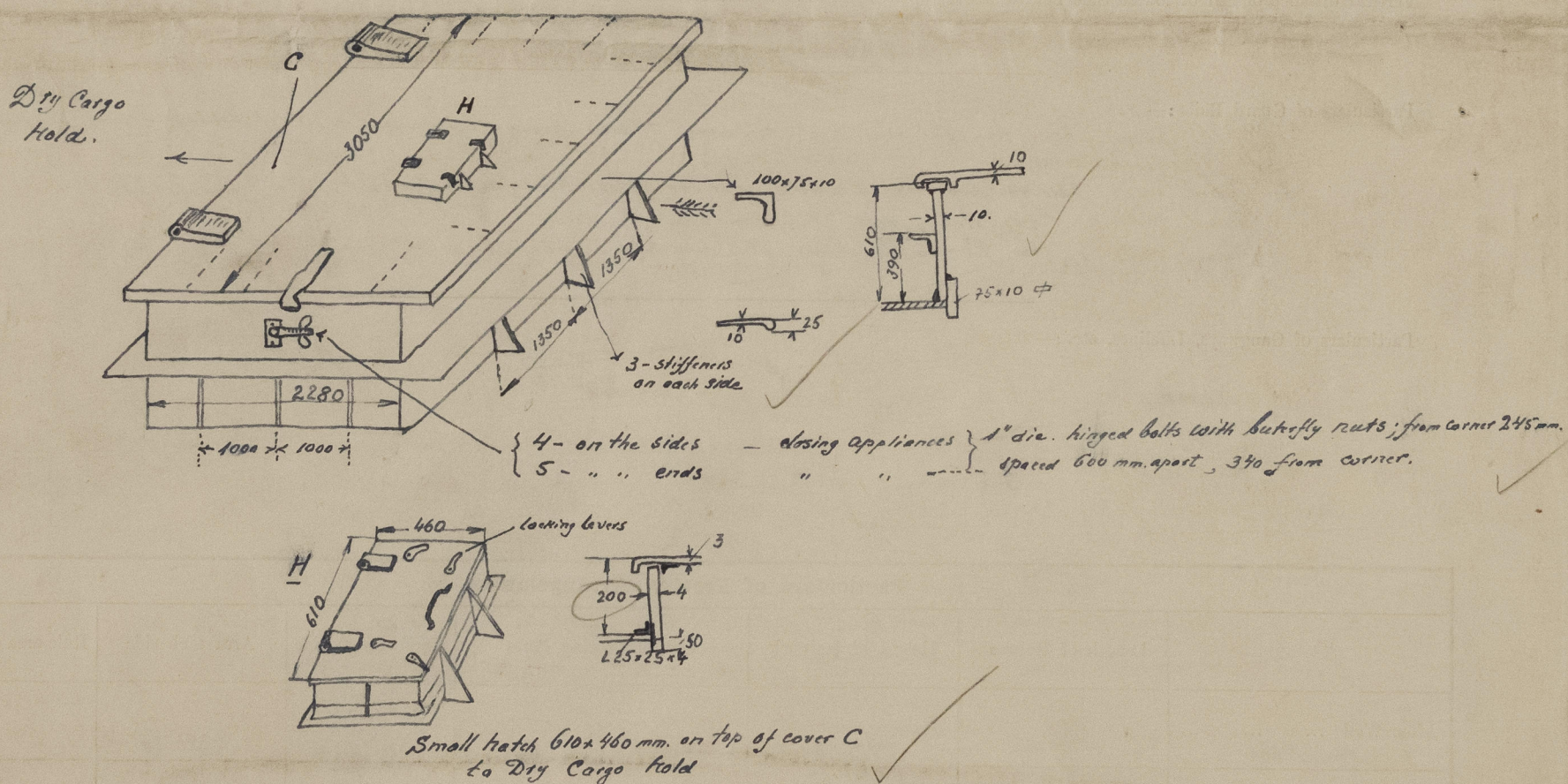
PARTICULARS OF PROTECTION TO OPENINGS, ETC.

HATCHWAYS ON FREEBOARD AND SUPERSTRUCTURE DECKS.										
Description of Hatchway			DRY CARGO HOLD		PORT EXPANSION			STARBOARD TRUNKS		
Dimensions of Hatchway			3050 x 2280	1145 x 915	1145 x 915	1145 x 915	1145 x 915	1145 x 915	1145 x 915	
COAMINGS	{	Height above Deck	610	535	535	535	535	535	535	
		Thickness	Sides	10	10	10	10	10	10	10
			Ends	10	10	10	10	10	10	10
		Stiffeners	L 100 x 75 x 10							
Brackets, Stays			10 x 25							
HATCH BEAMS	{	Number								
		Spacing								
		Scantling and Sketch								
		Bearing Surface								
FORE AND AFTERS	{	Number								
		Spacing								
		Unsupported Lengths								
		Scantling* and Sketch								
Bearing Surface										
HATCH COVERS	{	Material	Steel	STEEL						
		Thickness	8-9 mm	10 mm						
How fitted			See sketch							
Bearing Surface										
Spacing of Cleats			None	None						
Number of Tarpaulins			1	1						

5/8" for 450 mm dia
1/2" for 105 mm dia

*Are wood fore and afters steel shod at all bearing surfaces?
Are battens and wedges efficient and in good condition?
Are tarpaulins in good condition and in accordance with rule requirements?
Are lashings provided in accordance with rule requirements?

Particulars of any special features :—



{ 1 - entrance to forepeak
 1 - Cofferdam forward
 1 - " aft
 1 - entrance to afterpeak } On the freeboard deck. ✓

1 - entrance to store 610×610 - steel cover (aft)
of the same construction as H ✓

1 - entr. to steering compart. + 610×460 (aft)

1 - " to capstan 450×450 "

1 - " to chain locker 610×460 forward-port

1 - " " " " 610×460 " St-d.

Aft Deck
To afterpeak
Spaces

Port S. - one efficient steel W.T. cover secured by 4x5/8" dia. hinged Bolts and butterfly nuts
 Centre line - one " " W.T. " " " 4 Locking lever and wedge clamps
 Std. side - one " " W.T. " " " 4 " " " " "