

11 NOV 1952

Index No. _____
(For London Office only.)

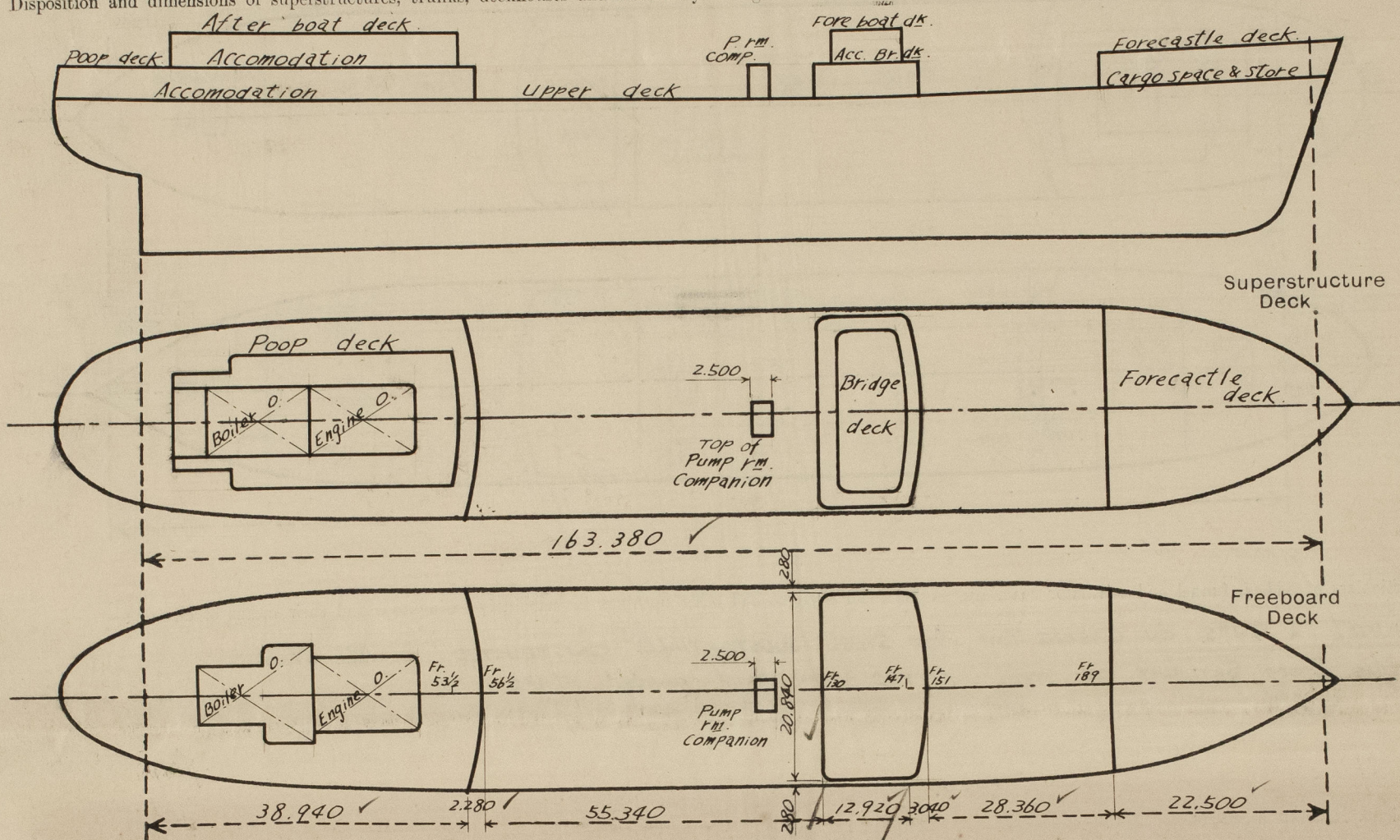
Lloyd's Register of Shipping.

SURVEYS FOR FREEBOARD.

(CONDITIONS OF ASSIGNMENT.)

Ship's Name KIRISHIMA MARU. Port of Survey AI OI. JAPAN.
 Official Number 59438. Surveyor's Signature G. G. Young.
 Nationality and Port of Registry JAPAN - TOKYO Date of Survey Whilst Building

Disposition and dimensions of superstructures, trunks, deckhouses and machinery casings to be inserted in the diagrams and tabular statement:—



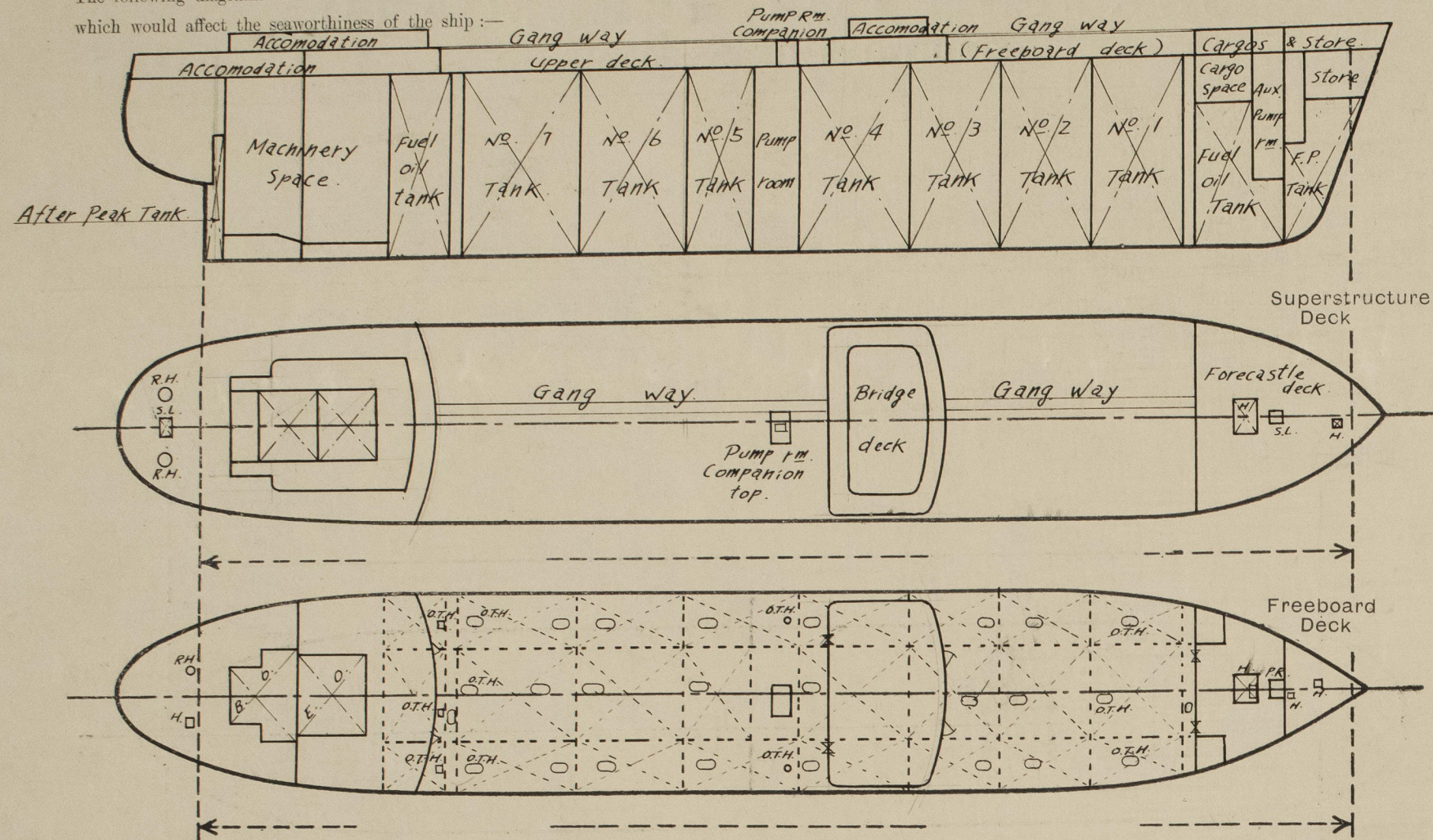
Particulars of Superstructures, Trunks, Casings, Deckhouses.								
	Coaming	Plating	Stiffeners	Spacing	End Attachments of Stiffeners	Size of Openings	Height of Sills	Height of Casings
Poop Bulkhead ...	11	11	250 x 90 x 1/4.5. I	750.	BRACKET BOTH ENDS.	1340 x 700	610.	2.350
Raised Quarter Deck Bulkhead ...	✓					1250 x 915.	610.	2.300
Bridge, After Bulkhead ...	8 ✓	8 ✓	125 x 75 x 7 I	760.	NONE	1340 x 900	610.	2.300
Bridge, Forward Bulkhead ...	11. ✓	11. ✓	250 x 90 x 12/15.5.	760	BRACKETS BOTH ENDS.	1340 x 900.	610.	2.300
Forecastle Bulkhead ...	8 ✓	8. ✓	75 x 75 x 9. I.	700	NONE	1250 x 915.	510.	2.310.
Trunk, Aft ...	✓							
Trunk, Forward ...	✓							
Exposed Machinery Casings on Freeboard or Raised Quarter Decks ...	✓							
Exposed Machinery Casings on Superstructure Decks ...	9 ✓	7-8. ✓	100 x 10. F.B.	760.	BKT AT TOP. BOTTOM CONTINUOUS	NONE.	NONE	2.440.
Machinery Casings within Superstructures not fitted with Class I Closing Appliances ...	9. ✓	7-8. ✓	100 x 10. F.B.	760.	DO.	1620 x 600.	230.	2.440.
(MAIN PUMP ROOM). Deckhouses on Flush Deck Ships ...	11 ✓	11. ✓	250 x 12. B.P.	760.	BRACKETS BOTH ENDS.	1340 x 600.	610.	2.300.

Particulars of Closing Appliances (state if capable of being manipulated from both sides).

Poop Bulkhead ...	HINGED. W/T. STEEL DOORS. CAPABLE OF BEING MANIPULATED FROM BOTH SIDES. ✓
Raised Quarter Deck Bulkhead ...	✓
Bridge, After Bulkhead ...	STEEL PLATE FITTED WITH HOOKED BOLTS. ✓
Bridge, Forward Bulkhead ...	HINGED W.T. STEEL DOORS - CAPABLE OF BEING MANIPULATED FROM BOTH SIDES ✓
Forecastle Bulkhead ...	STEEL PLATE FITTED WITH HOOKED BOLTS. ✓
Exposed Machinery Casings on Freeboard or Raised Quarter Decks ...	✓
Exposed Machinery Casings on Superstructure Decks ...	✓
Machinery Casings within Superstructures not fitted with Class I Closing Appliances ...	HINGED STEEL DOORS - CAPABLE OF BEING MANIPULATED FROM BOTH SIDES ✓
Deckhouses on Flush Deck Ships ...	HINGED W/T STEEL DOOR. CAPABLE OF BEING MANIPULATED FROM BOTH SIDES. ✓

PARTICULARS OF PROTECTION TO OPENINGS, ETC.

The following diagrams should be used to indicate the positions of cargo and coaling hatchways, gangway, cargo and coaling ports, ventilators, companionways, etc., which would affect the seaworthiness of the ship:—



Particulars of fiddle, funnel and ventilator coamings, engine room skylight and other openings in machinery casing tops and their means of closing:—

FUNNEL & VENTS ON CASING TOP, OF STEEL, SUBSTANTIALLY CONSTRUCTED & WELL STAYED
ENGINE ROOM SKYLIGHT OF STEEL, FITTED WITH STEEL HINGED FLAPS. ✓

Particulars of Flush Bunker Scuttles:—

NONE ✓

Particulars of Companionways:—

POOP DECKHOUSE OF STEEL - STRONGLY CONSTRUCTED (ENCLOSING 3 STAIRWAYS DOWN TO UPPER DK ACCOMMODATION) ✓
FRONT DOORS. HINGED W.T. STEEL DOORS. } CAPABLE OF BEING MANIPULATED FROM BOTH SIDES
SIDE DOORS. STRONG WOOD DOORS } ALL DOOR SILLS 52.5"/m. ✓

Particulars of Ventilators in exposed positions on freeboard and superstructure decks:—

DECK.	No.	TYPE	COAMING.	HT. TO LIP.	COMPARTMENT.
FORECASTLE	3	G.N. 100		460.	STORE
	2.	G.N. 150			
	4	M.V. 400	1550 x 10		CARGO HOLD.
	1.	M.V. 300	" "		PUMP ROOM.
UPPER DK.	1.	C.V. 300	" "		" "
	2.	C.V. 300	2000 x 9.		ART. C/DAM.
BRIDGE DK.	4.	G.N. 100		460.	STORE
	2.	G.N. 150			
POOP DK.	1.	M.V. 200	460 x 8.		REFRIG. MACHY.
	6.	G.N. 100		460.	STORE
	1.	G.N. 150	460 x 8.		
	28.	M.V. 150	460 x 8.		ACCOMMODATION.
	1.	M.V. 200	1500 x 9.		REFRIG. MACHY.
	2.	C.V. 400	1500 x 10.		STEERING. ROOM.
					PASSAGE

Particulars of Air Pipes in exposed positions on freeboard, raised quarter, or superstructure decks:—

DECK.	No.	SIZE	HT. TO LIP.	TANK.
FORECASTLE	2.	80.	460.	F.P. TANK.
	2.	100	460.	C/DAM.
	1.	130.	460.	F.P. TANK.
	2.	150.	460.	O.F. TANK.
UPPER DK.	5.	130.	915.	F.O. TANK.
	4.	160	915	C/DAM.
	3.	160	2.500.	F.O. TANK. SECURED TO POOP FRONT.
POOP DK.	3.	50.	460.	C/DAM.
	17.	80	460	D.B. TANKS
	5.	100	460.	F.O. TANKS.

CLOSING APPLIANCES.

GOOSE NECK VENTS FITTED WITH HINGED W.T. COVERS. ✓

MUSHROOM VENTS FITTED WITH SCREW DOWN W.T. COVERS. ✓

COAL VENTS FITTED WITH WOOD PLUGS & CANVAS COVERS. ✓

CLOSING ARRANGEMENTS.

ALL AIR PIPES FITTED WITH HINGED OR SCRIBBED W.T. COVERS. ✓

ALL O.F. AIR PIPES FITTED WITH GAUZE ✓

Particulars of Gangway Cargo and Coaling Ports:—

NONE ✓

Particulars of Scuppers and Sanitary Discharge Pipes:—

POOP SPACE SCUPPERS & SANITARY DISCHARGES FROM UPPER DECK LED THROUGH SHELL ABOUT 4'-0" ABOVE L.W.L. THROUGH NON RETURN VALVES & STORM VALVES ON SHELL. ✓

BRIDGE SPACE SCUPPERS & SANITARY DISCHARGES FROM BRIDGE ACCOMMODATION ARE DISCHARGED AT ABOUT 12" ABOVE UPPER DECK, THROUGH STORM VALVES. ✓

Particulars of Side Scuttles:—

FITTED IN POOP & BRIDGE SIDE OF SUBSTANTIAL CONSTRUCTION AND FITTED WITH HINGED DEPOULIGHTS. ✓

Vertical distance of Sill of lowest Side Scuttle above top of keel 13.120 m. ✓

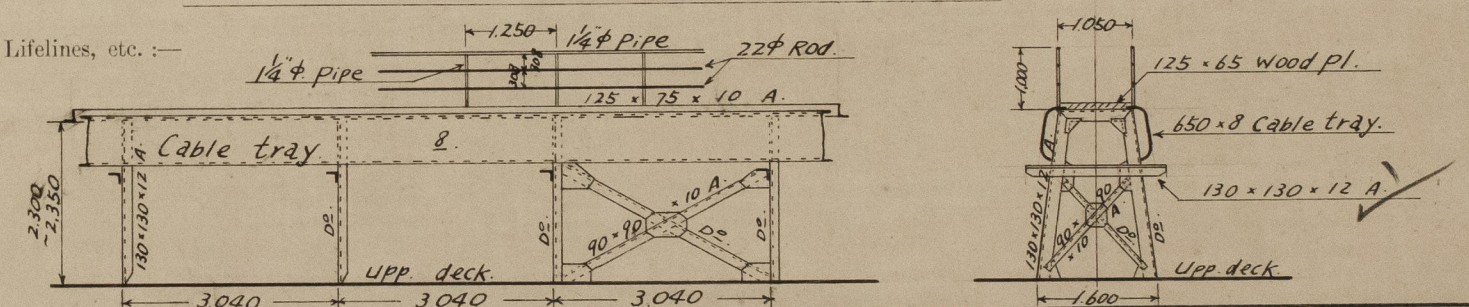
Particulars of Guard Rails:—

FORECASTLE, UPPER & POOP DECKS.

3 TIER RAILS. TOP 1 1/4" G.W. I. PIPE
2 RAILS. 7/8" DIA RODS.
HEIGHT. 1.000.
STANCHIONS SPACED APPROX 1.250 M. APART.

Particulars of Gangways, Lifelines, etc.:—

Gang way.



Particulars of Freeing Arrangements.

	Length of Bulwark	Height of Bulwark	Size of Freeing Ports	Number each side	Area each side	Rule area each side
After Well ...						
Forward Well ...						

State position of each freeing port ... After Well:—
(F. and A. position and height above deck edge) Forward Well:—

State whether the freeing ports are fitted with shutters, bars, or rails, and give particulars of such:—

Additional area where sheer is less than standard.

PARTICULARS OF PROTECTION TO OPENINGS, ETC.

HATCHWAYS ON FREEBOARD AND SUPERSTRUCTURE DECKS.												
Description of Hatchway	CARGO TANKS.	D°.	O.F. BUNKER ON UPPER DECK AFT.	C/DAM ON UPPER DK FWD.	C/DAM ON UPPER DK AFT.	B.O.S.N. STOPS INSIDE FELE	CHAIN LKR INSIDE FELE	STEER HATCH INSIDE POOP.	ROPE HATCH INSIDE POOP.	FILE DECK ROPE HATCH	POOP DK ROPE HATCH	
Dimensions of Hatchway	1500 x 580	600 DIA.	600 x 600	600 x 450	600 x 380	800 x 800	600 x 600	600 x 600	400 DIA.	800 x 800	500 DIA.	
COAMINGS	Height above Deck ... 760 ✓ Thickness { Sides ... 12. ✓ Stiffeners ... Brackets, Stays ...	760 ✓ 12. ✓	760 ✓ 12. ✓	200 ✓ 12. ✓	200 ✓ 12. ✓	230 ✓ 12. ✓	230 ✓ 12. ✓	230 ✓ 12. ✓	230 ✓ 12. ✓	610 ✓ 12. ✓	460 ✓ 12. ✓	
HATCH BEAMS	Number ... Spacing ... Scantling and Sketch ... Bearing Surface ...											
FORE AND AFTERS	Number ... Spacing ... Unsupported Lengths ... Scantling* and Sketch ... Bearing Surface ...											
HATCH COVERS	Material ... O.T. STEEL Thickness ... COVERS. 13. How fitted ... SECURED BY Bearing Surface ... RIBBOLTS & NUTS	D°.	D°.	D°.	D°.	STEEL W.T. COVER 5mm. SECURED BY RIBBOLTS & NUTS.			D°.	D°.	D°.	
Spacing of Cleats	...	355.	399 ✓	330 ✓	346 ✓	326 ✓	570 ✓	530 ✓	400 ✓	570 ✓	435 ✓	
Number of Tarpaulins...	...											
*Are wood fore and afters steel shod at all bearing surfaces? ✓ Are battens and wedges efficient and in good condition? ✓ Are tarpaulins in good condition and in accordance with rule requirements? ✓ Are lashings provided in accordance with rule requirements? ✓												

Particulars of any special features:—

CARGO HOLD HATCH - FORECASTLE DK. - 3425 x 4000. COAMING 610 x 12. STIFFENERS 180 x 30 x 9.5. BA. 9mm FLGD APTS. ✓
 STEEL PLATE COVER 10mm WITH 20mm SURROUND PLATE ✓
 COVER STIFFENED WITH 250 x 90 x 12. BA. & 125 x 90 x 12. INV. ANGLE SPACED 837. APART. ✓
 W.T. COVER SECURED BY BOLTS & NUTS 250mm APART. ✓
SMALL HATCH ON MAIN HATCH - 1000 x 1000. COAMING 100 x 12. W.T. STEEL COVER 6mm. SECURED BY RIBBOLTS & BUTTERFLY NUTS. ✓
CARGO HOLD HATCH - UPPER DK. 3425 x 4000 COAMING 230 x 11. STEEL PLATE COVER 9mm WITH 20mm SURROUND ✓
 PLATE. COVER STIFFENED WITH 230 x 11 B.P. SPACED 1.135. APART. ✓
 W.T. COVER SECURED BY BOLTS & NUTS 250mm APART. ✓
SMALL HATCH ON MAIN HATCH - 1000 x 1000 COAMING 60 x 12. W.T. STEEL COVER 6mm SECURED BY RIBBOLTS & NUTS ✓
SKYLIGHT ON AUXLY PUMP ROOM. 1380 x 1350 COAMING 610 x 12. WITH HINGED STEEL W.T. FLAPS. ✓
SKYLIGHT ON STEERING GEAR. 1600 x 1200. " 460 x 12. " " " " " " ✓
SKYLIGHT ON MAIN PUMP ROOM. 2700 x 1900. " 200 x 8. " " " " " " ✓



© 2021

Lloyd's Register Foundation