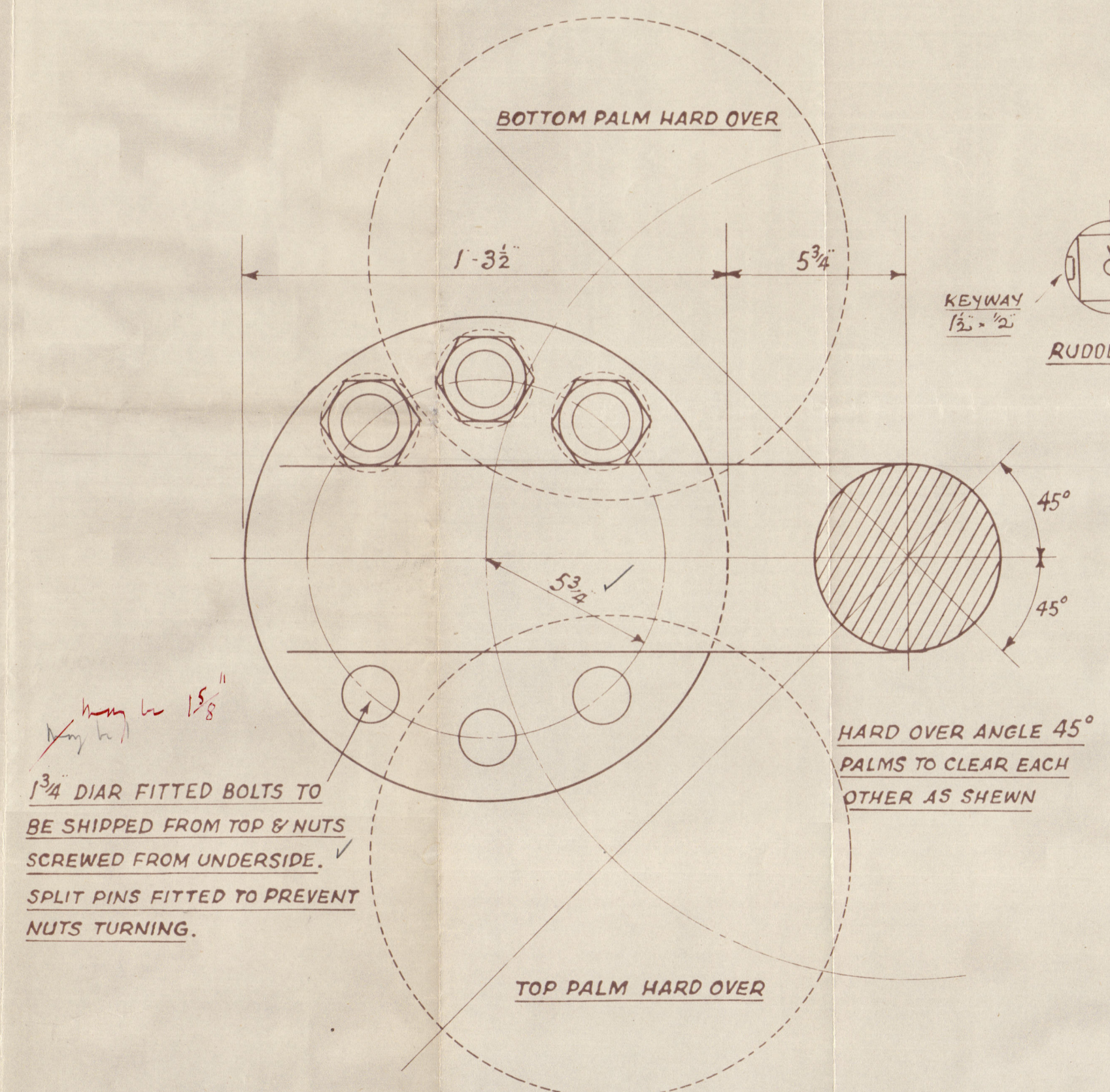


# STERNFRAME & RUDDER

FORGED STEEL TO LLOYDS REQUIREMENTS

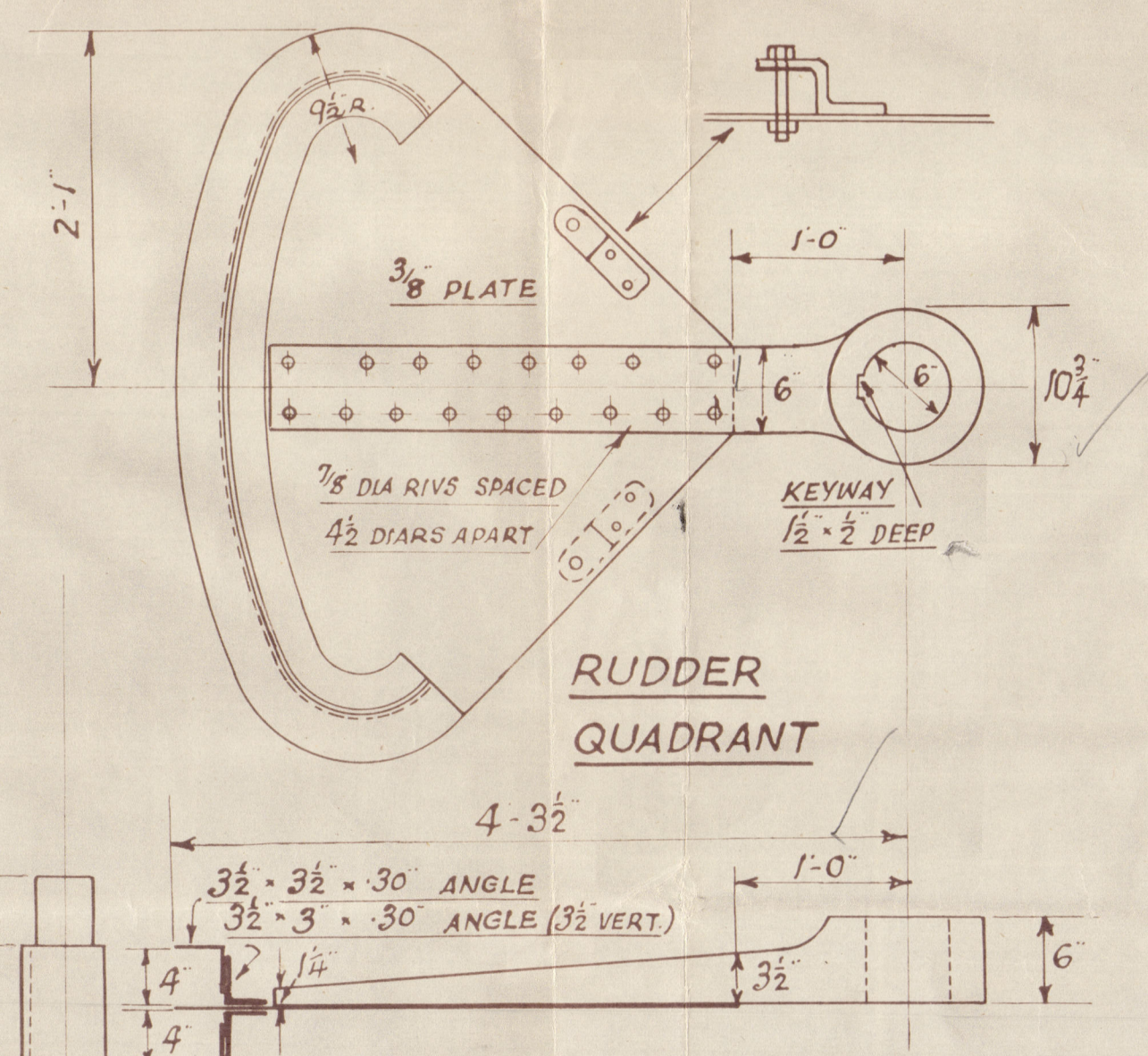
SCALE: 1" = 1 FT. & AS MARKED

SHIP NOS  
1297-8

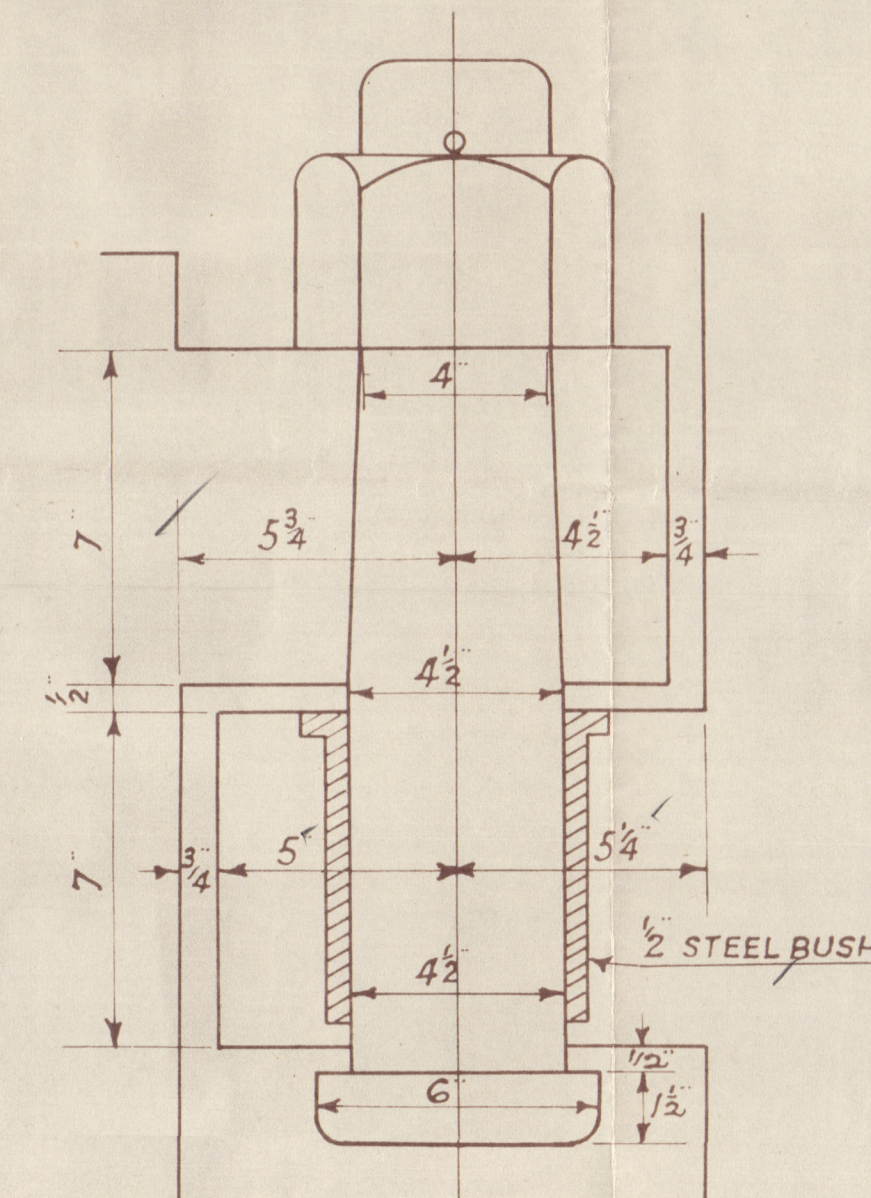


1 3/4" DIA. FITTED BOLTS TO BE SHIPPED FROM TOP & NUTS SCREWED FROM UNDERSIDE. SPLIT PINS FITTED TO PREVENT NUTS TURNING.

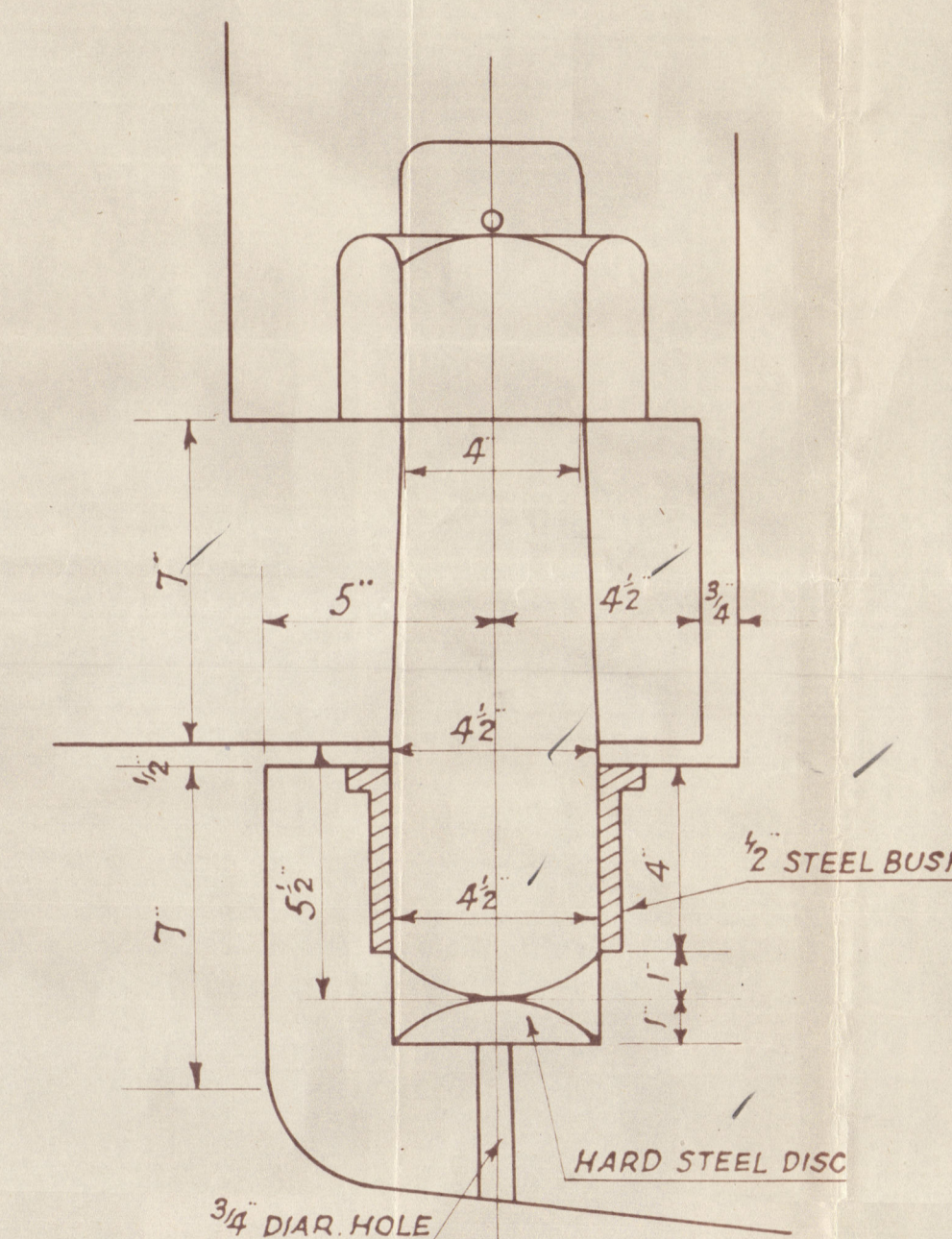
HARD OVER ANGLE 45° PALMS TO CLEAR EACH OTHER AS SHOWN



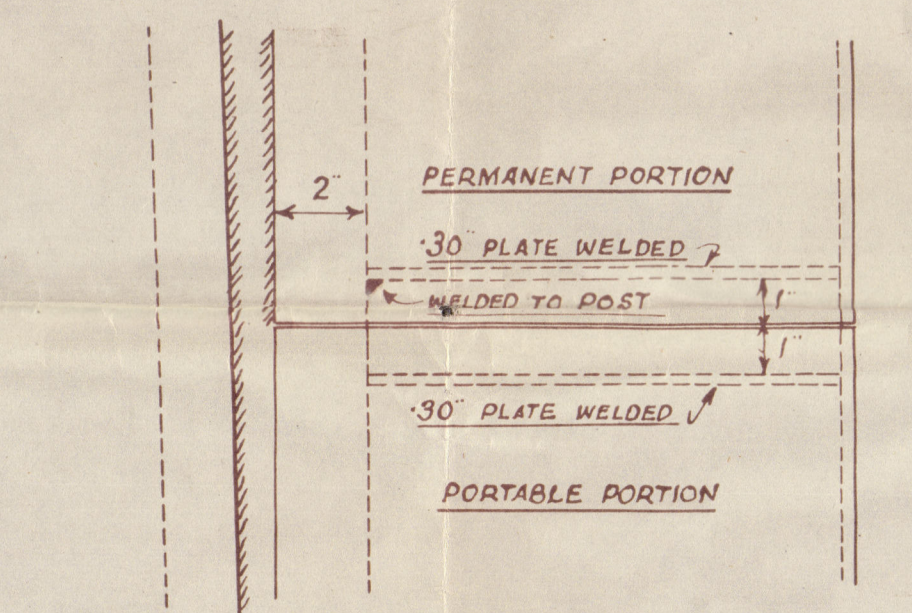
RUDDER QUADRANT



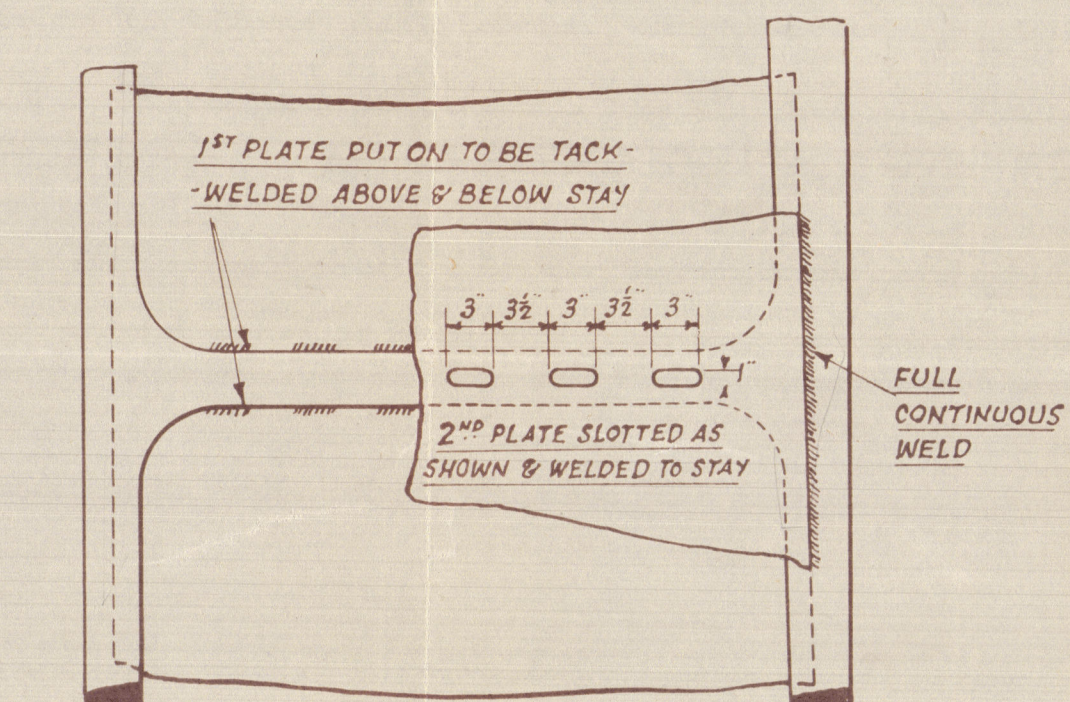
DETAIL OF TOP PINTLE



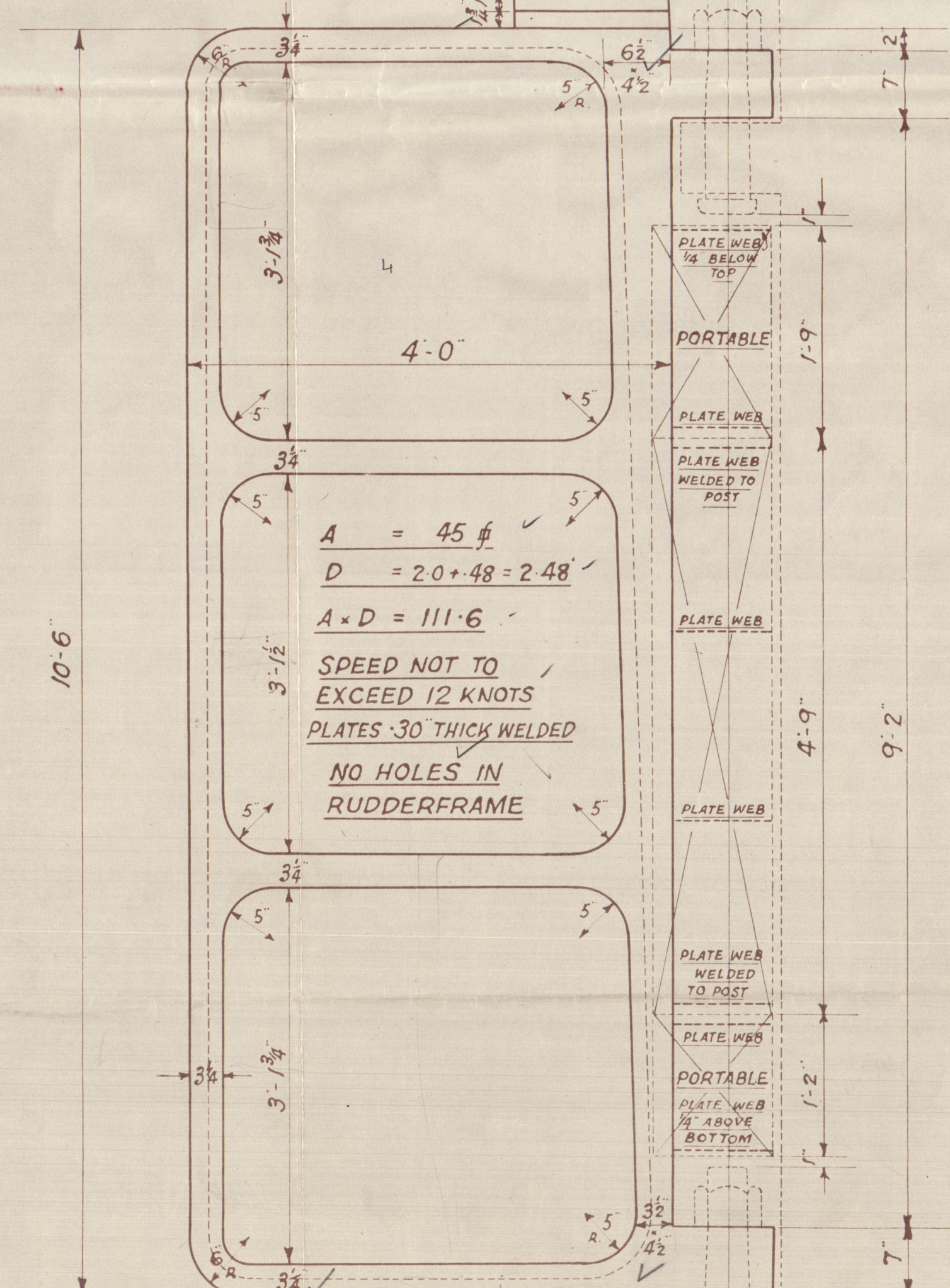
DETAIL OF BOTTOM PINTLE



DETAIL OF STREAMLINING AT FORE EDGE OF RUDDER



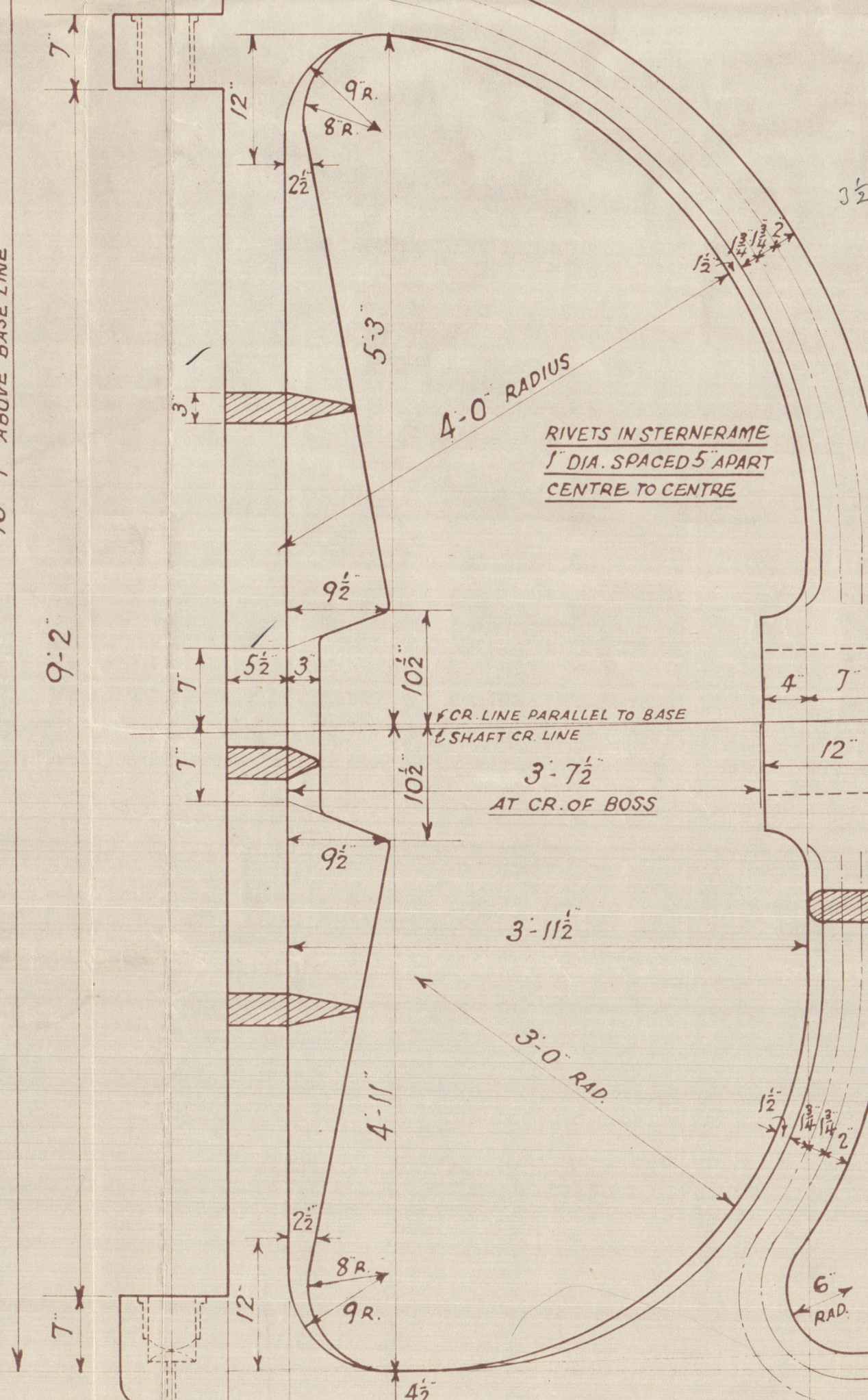
DETAIL SHOWING CONNECTION OF RUDDER PLATING TO STAYS



$A = 45 \text{ ft}$   
 $D = 2.0 + 48 = 2.48$   
 $A \times D = 111.6$

SPEED NOT TO EXCEED 12 KNOTS  
PLATES 3/32" THICK WELDED  
NO HOLES IN RUDDERFRAME

16'-9" ABOVE BASE LINE

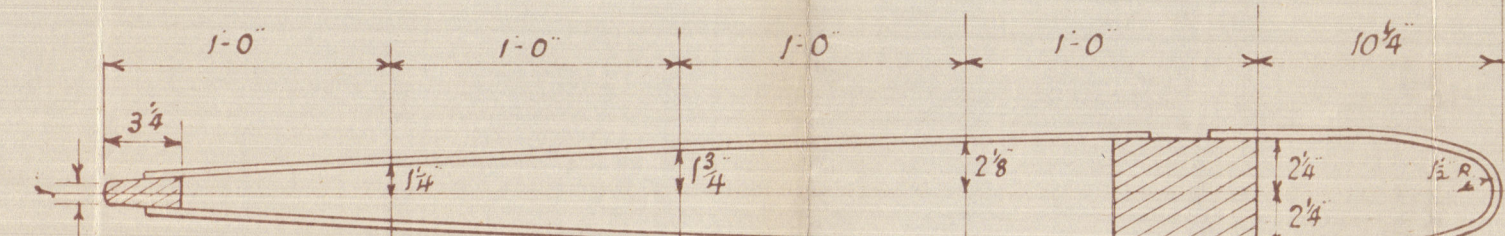


AFTER FACE OF BOSS

LAST HOLE TO BE AS NEAR THE BOSS AS PRACTICABLE

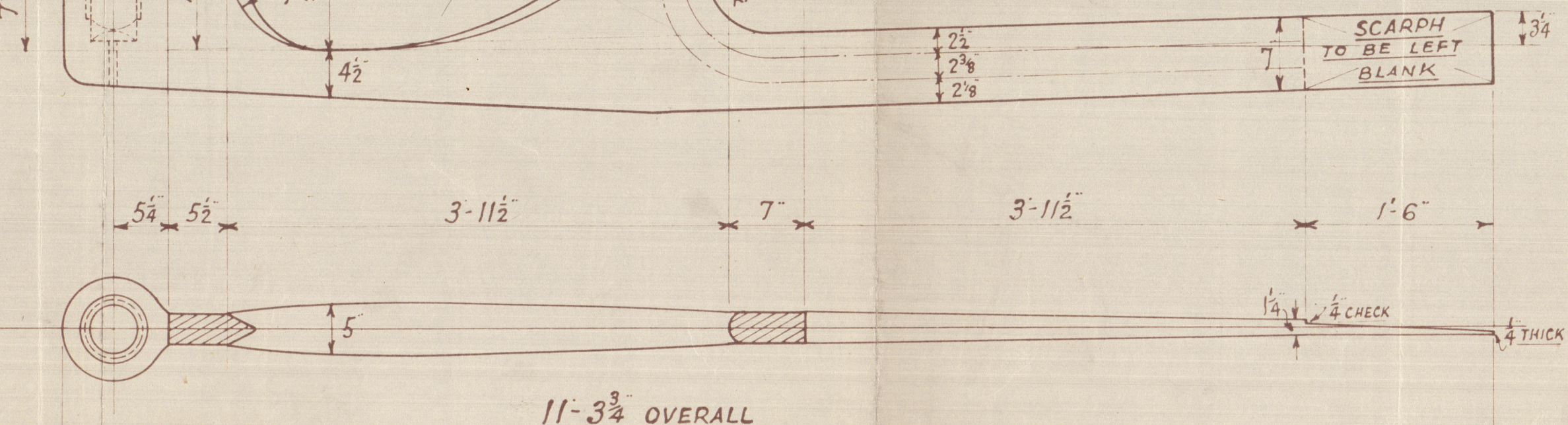
THICKNESS OF BOSS TO BE INCREASED TO 3/8" AT FORE END

FORE & AFT FACES OF BOSS & BORE OF BOSS TO BE SQUARE & PARALLEL TO SHAFT OR LINE RESPECTIVELY. SHAFT DROOPS AFT FROM FORWARD 1" IN 6'-10 1/2"



SECTION THRO RUDDER

SCALE: 1/2" = 1 FT.



11'-3 3/4" OVERALL



3

Taurus D/S 470

Hul 53089.

COCHRANE & SONS

YARD N<sup>os</sup> 1297/8, 1299 -

1304

—  
STERNFRAME AND  
RUDDER.



© 2021

Lloyd's Register  
Foundation

009570 - 009579 - 0080